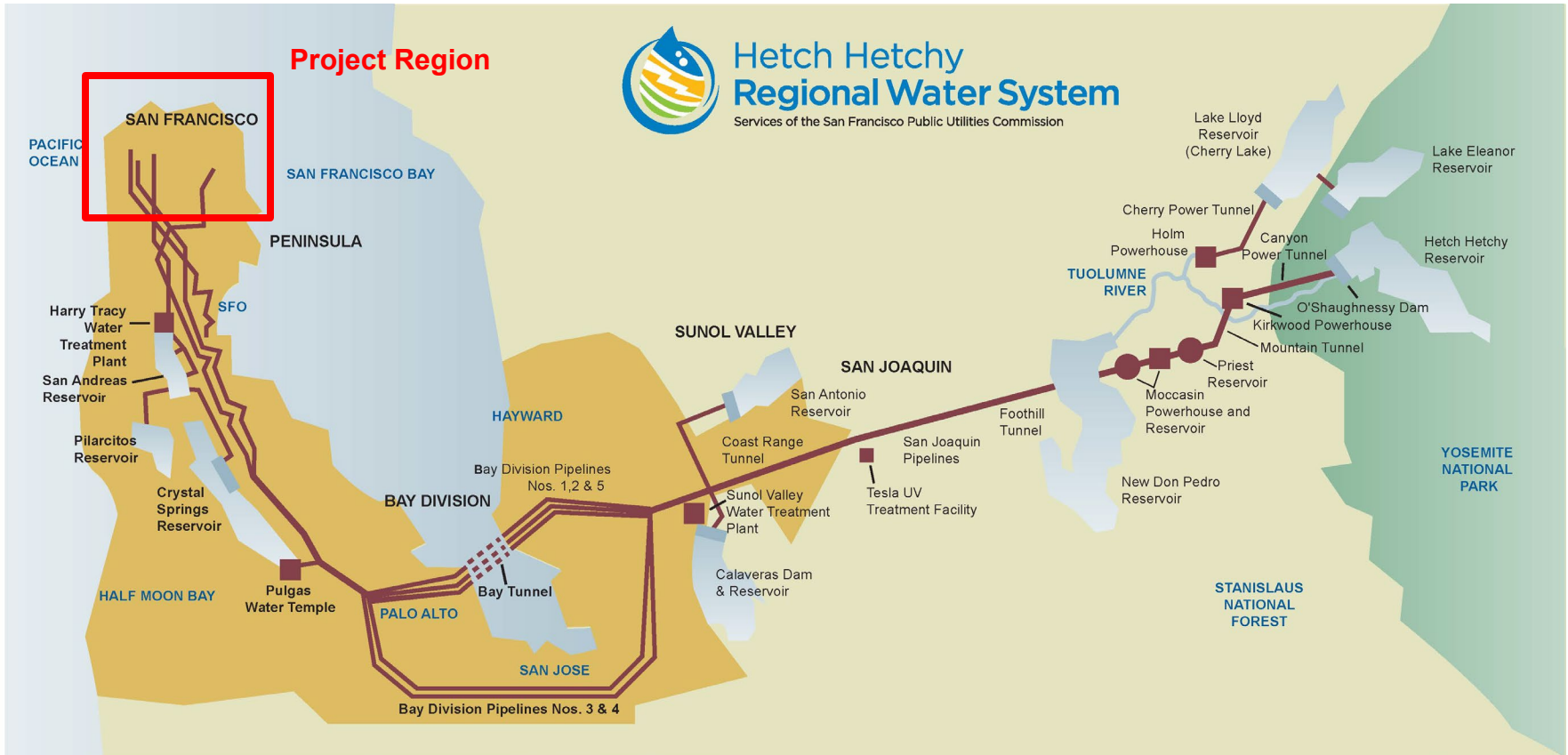




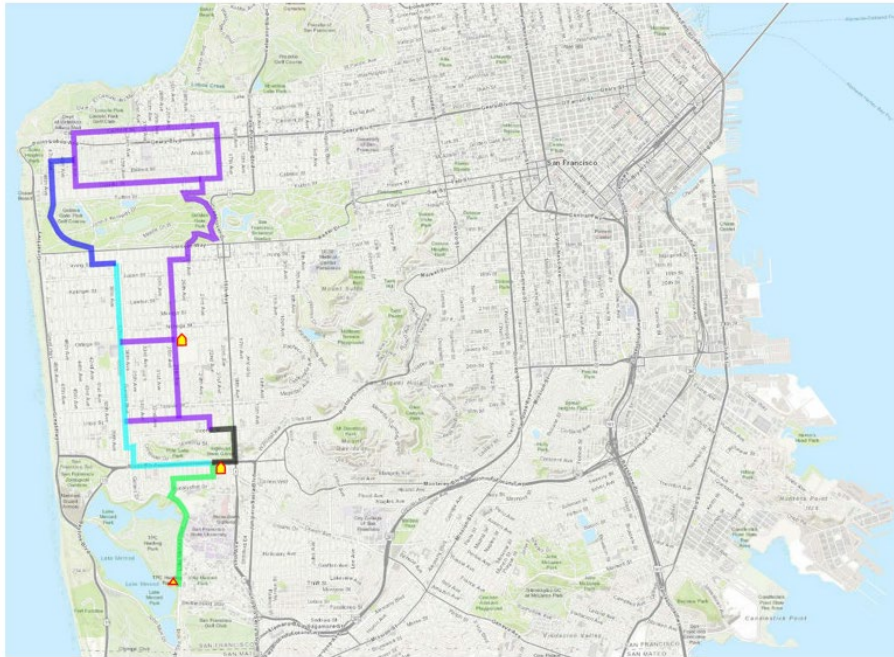
Request to Approve Amendment No. 1 to Contract Number PRO.0163(R) - Engineering Services for the Emergency Firefighting Water System and City's Water Distribution System

**San Francisco Board of Supervisors – Budget and Finance Committee Meeting
May 27, 2026**

Overall Water System



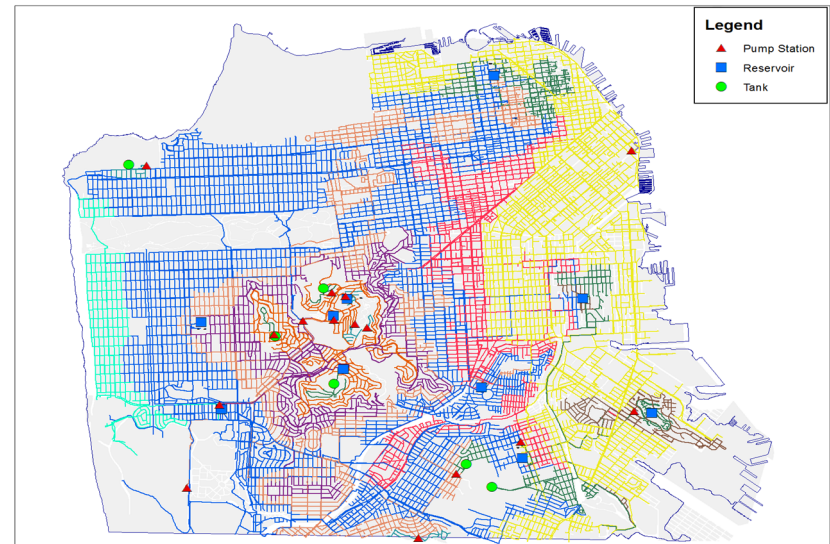
Potable Emergency Firefighting Water System (PEFWS)



- Network of reservoirs, tanks, pipelines, cisterns, pump stations, fireboats, and other facilities within San Francisco
- System designed to fight large fires and fires following large seismic events when domestic water system may be impacted

Linear Assets Management Program (LAMP)

- Annual goal to replace approximately 10-15 miles of pipeline per year to extend or renew useful life
- Work may include replacement, rehabilitation, relining, seismic resiliency and cathodic protection





Contract Scope Overview

- PRO.0163(R): Engineering Services for the Emergency Firefighting Water System and City's Water Distribution System
- Resolution No. 24-0025 (February 13, 2024)
- Contractor: LEE+RO and AGS Joint Venture
- Contract Amount: \$8,000,000
- Contract Duration: Eight (8) years

Scope of work is to provide engineering support for specific projects identified in the contract



Contract PRO.0163(R) Proposed Amendment 1 Modifications

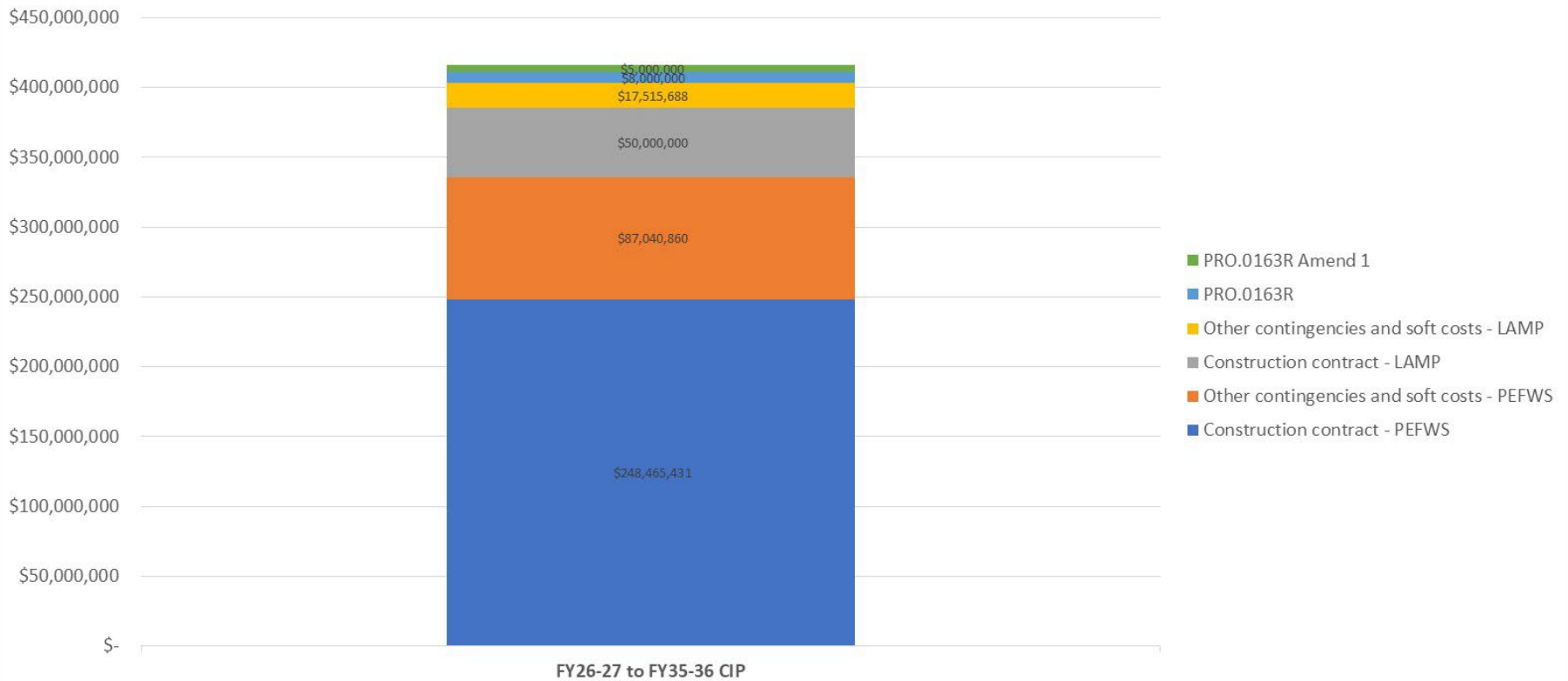
Project Name	Current Phase	Current Contract Budget	Proposed Amendment 1 Modifications		Proposed Budget
EFWS Pipelines Contracts A through C	Planning / Design	\$4,169,441	Planning, Design, and ESDC*	\$4,590,000	\$8,759,441
EFWS Pump Station(s) Central Pump Station	Planning	\$417,319	Planning	\$300,000	\$717,319
City's Distribution System Active LAMP Projects	Design	\$802,345	Design and ESDC*	\$400,000	\$1,202,345
City's Distribution System LAMP Projects starting 2026	Not Started	\$0	Planning, Design, and ESDC*	\$2,300,000	\$2,300,000
Training Sessions	Not Started	\$0	N/A	\$20,895	\$20,895
Unassigned	N/A	\$2,610,895	N/A	(\$2,610,895)	\$0
TOTAL		\$8,000,000		\$5,000,000	\$13,000,000

*ESDC – Engineering Support During Construction



Amendment No.1 increase in context

PRO.0163R - Total Projects Budget



PEFWS Pipelines



- Design criteria modified for higher seismic level of service, alignment changes to improve system robustness, and unforeseen geotechnical complexities
- Contracts A through C
- Current Phase: Planning and Design



EFWS Pump Stations

- Design criteria modified for higher seismic level of service resulted in system re-evaluation



- Central Pump Station
- Current Phase: Planning

LAMP Projects



- Support needed for geotechnical engineering and curb ramp design
- Current Phase: Design

- Existing projects continuing and starting construction in 2026
- New projects starting design in 2026

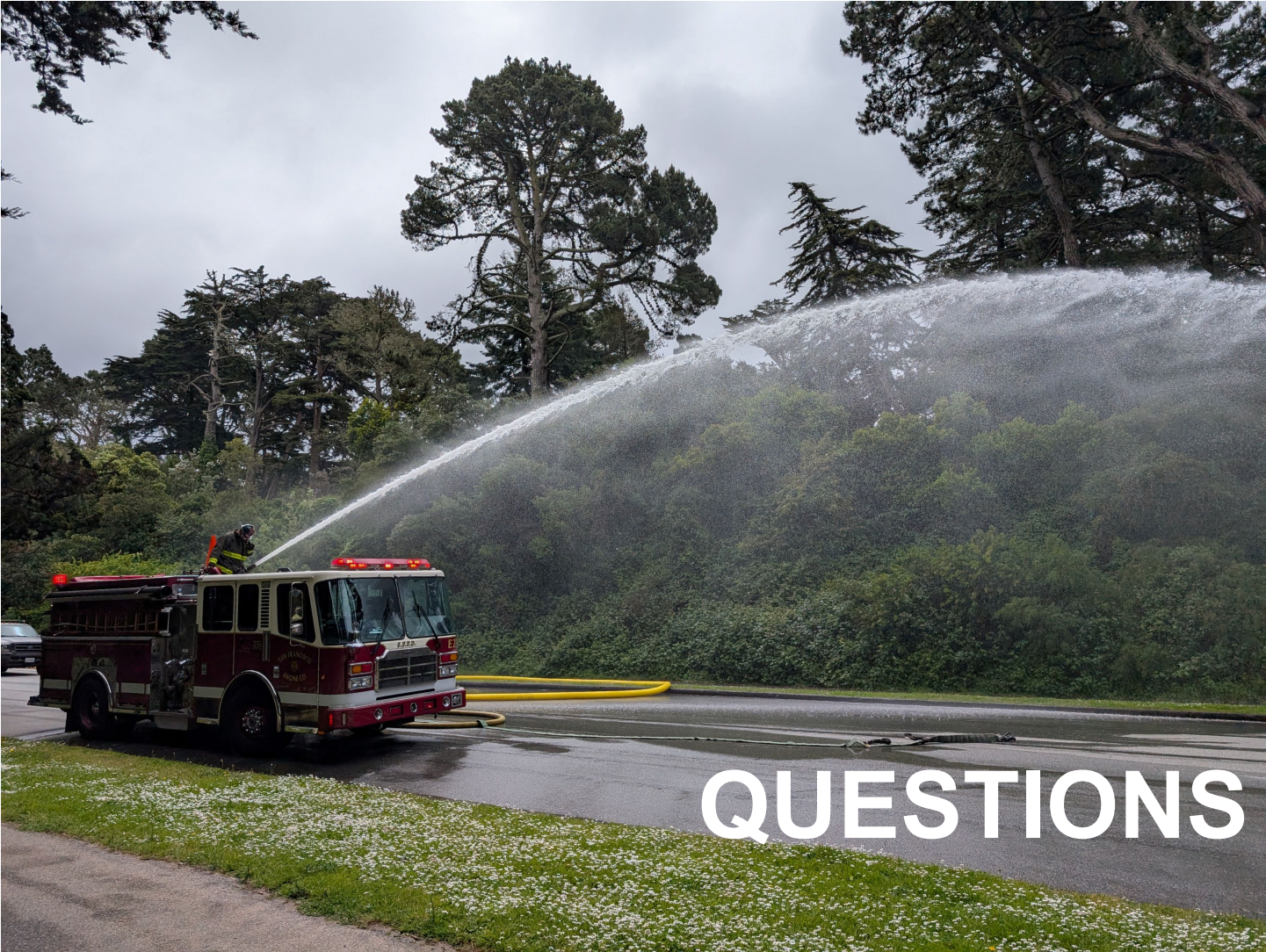




Contract PRO.0163(R) Proposed Amendment 1 Modifications

Project Name	Current Phase	Current Contract Budget	Proposed Amendment 1 Modifications		Proposed Budget
EFWS Pipelines Contracts A through C	Planning / Design	\$4,169,441	Planning, Design, and ESDC*	\$4,590,000	\$8,759,441
EFWS Pump Station(s) Central Pump Station	Planning	\$417,319	Planning	\$300,000	\$717,319
City's Distribution System Active LAMP Projects	Design	\$802,345	Design and ESDC*	\$400,000	\$1,202,345
City's Distribution System LAMP Projects starting 2026	Not Started	\$0	Planning, Design, and ESDC*	\$2,300,000	\$2,300,000
Training Sessions	Not Started	\$0	N/A	\$20,895	\$20,895
Unassigned	N/A	\$2,610,895	N/A	(\$2,610,895)	\$0
TOTAL		\$8,000,000		\$5,000,000	\$13,000,000

*ESDC – Engineering Support During Construction



QUESTIONS