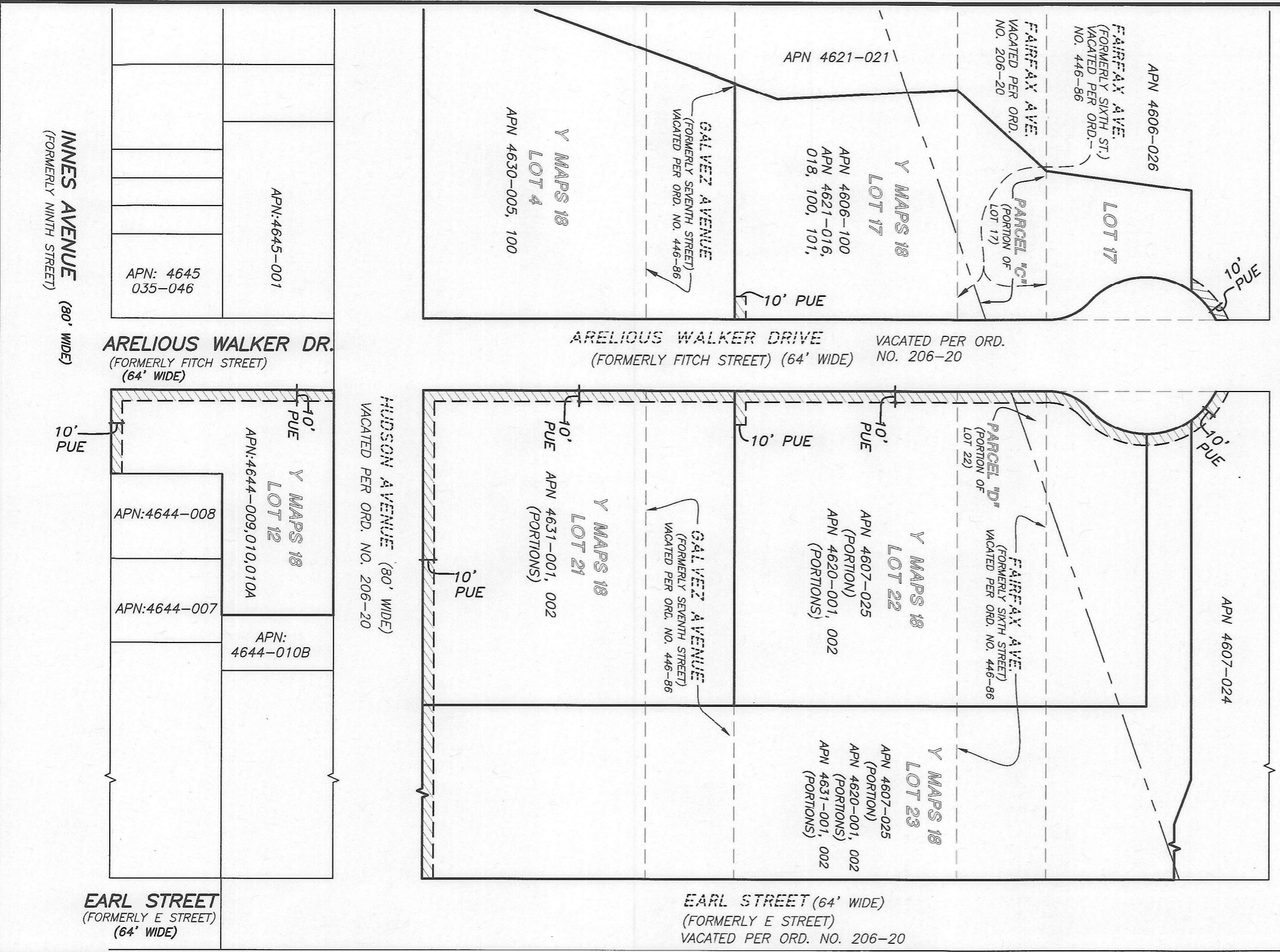


GRAPHIC SCALE

**LEGEND**  
 APN ASSESSOR'S PARCEL NUMBER  
 10' PUE PUBLIC UTILITY EASEMENT PER Y MAPS 18 TO BE VACATED

**MAP REFERENCE**  
 "MAP OF EAST INDIA BASIN BUSINESS PARK" FILED MAY 4, 1988 IN BOOK "Y" OF MAPS, AT PAGES 18 AND 19, SAN FRANCISCO COUNTY RECORDS.



**APPROVED:**  
*William E. Blackwell Jr.*  
 WILLIAM E. BLACKWELL JR., PLS 8251  
 ACTING CITY & COUNTY SURVEYOR

**DATE:** 5/10/22

**CITY AND COUNTY OF SAN FRANCISCO PUBLIC WORKS**  
 SUBDIVISION AND MAPPING

**MAP TITLE:** VACATION OF PUBLIC UTILITY EASEMENTS ADJACENT TO ARELIIOUS WALKER DRIVE, HUDSON AVENUE AND INNES AVENUE

**FILE:** SUR 2022-002

**SHEET:** 1 OF 1

**SCALE:** 1:100

**REVISION:**