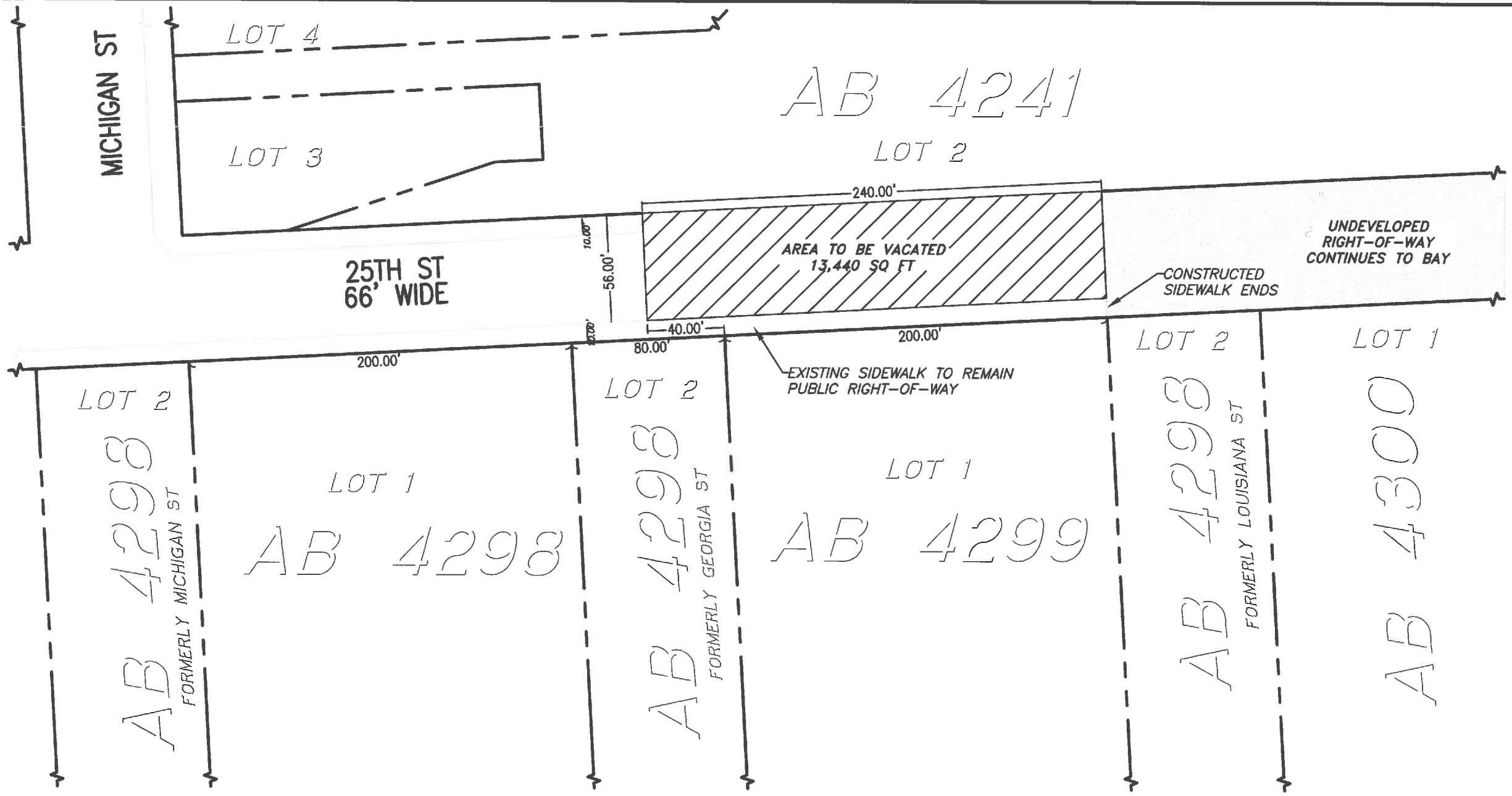


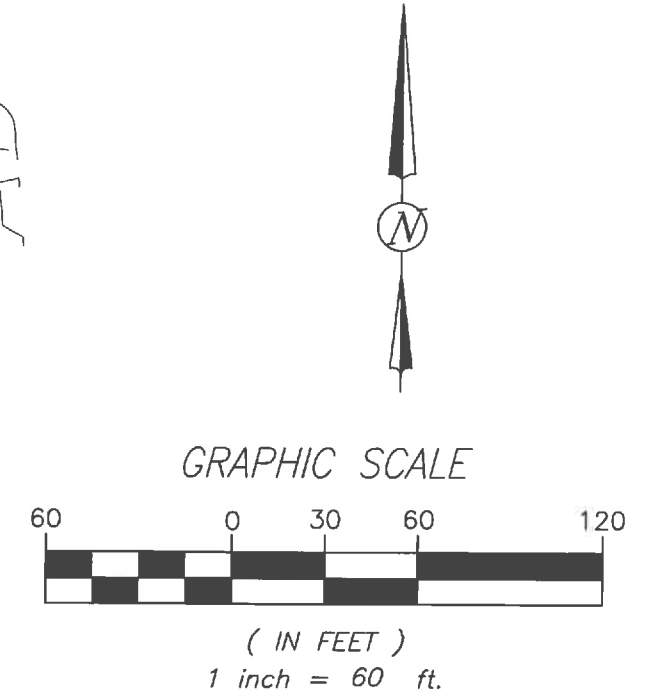
Jrivera Oct 03, 2016 - 9:28am J:\Survey\STREET VACATION & EASEMENT\AB 4299 Lot 001 Navigation Center\DWG\SUR-AB4299_Navigation.dwg

REFERENCES:
-GRADE MAP 327 & 328
-DEDICATION MAP 327 & 328
-SUR 12001



LEGEND

AB _____ ASSESSOR'S BLOCK NO.
_____ VACATION BOUNDARY
_____ PROPERTY LINE
_____ EXISTING OFFICIAL CURB TO REMAIN



APPROVED: *Bruce R. Storrs*

BRUCE R. STORRS
CITY & COUNTY SURVEYOR
DATE: *10/3/16*

CITY AND COUNTY OF SAN FRANCISCO
DEPARTMENT OF PUBLIC WORKS
TEMPORARY STREET VACATION OF A PORTION OF 25TH STREET BETWEEN MICHIGAN STREET AND SEAWALL LOT 355.
FILE: SUR 2016-020 SHEET 1 OF 1 SCALE: 1:60 REVISION