

Recreation & Park Department

Shelley Promenade in McLaren Park

October 2, 2023



Inspire, Connect, Play!

Introduction

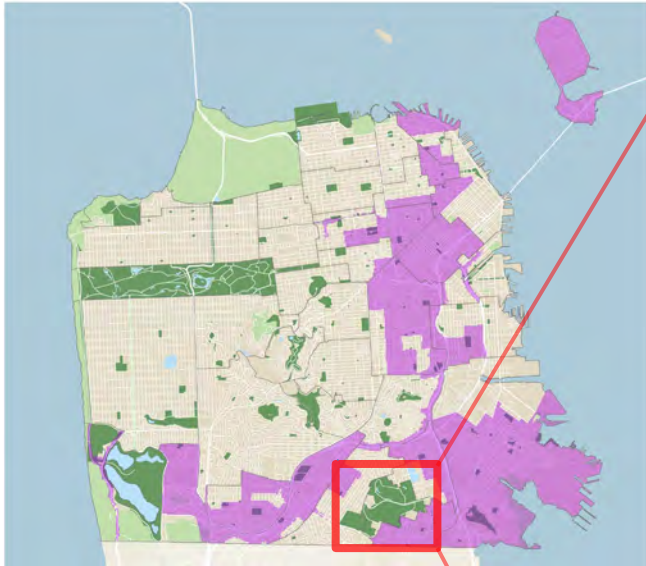
Design a walkable and slower John Shelley Drive in McLaren Park.

Improve John McLaren Park's

- Safety
- Accessibility
- Mobility
- Equity



Introduction



McLaren Park is located near many Environmental Justice Communities (pink)



2018 Vision Plan:

- Enhance community access in & through McLaren Park
- Explore roadway treatments
 - Close a segment of Shelley to calm the road
 - Open same segment to walking and biking



Background

Promenade Implementation



Promenade initiated during COVID (2020):

- Included Shelley Drive West + North
- Heavily used by pedestrians, cyclists & kids learning to bike

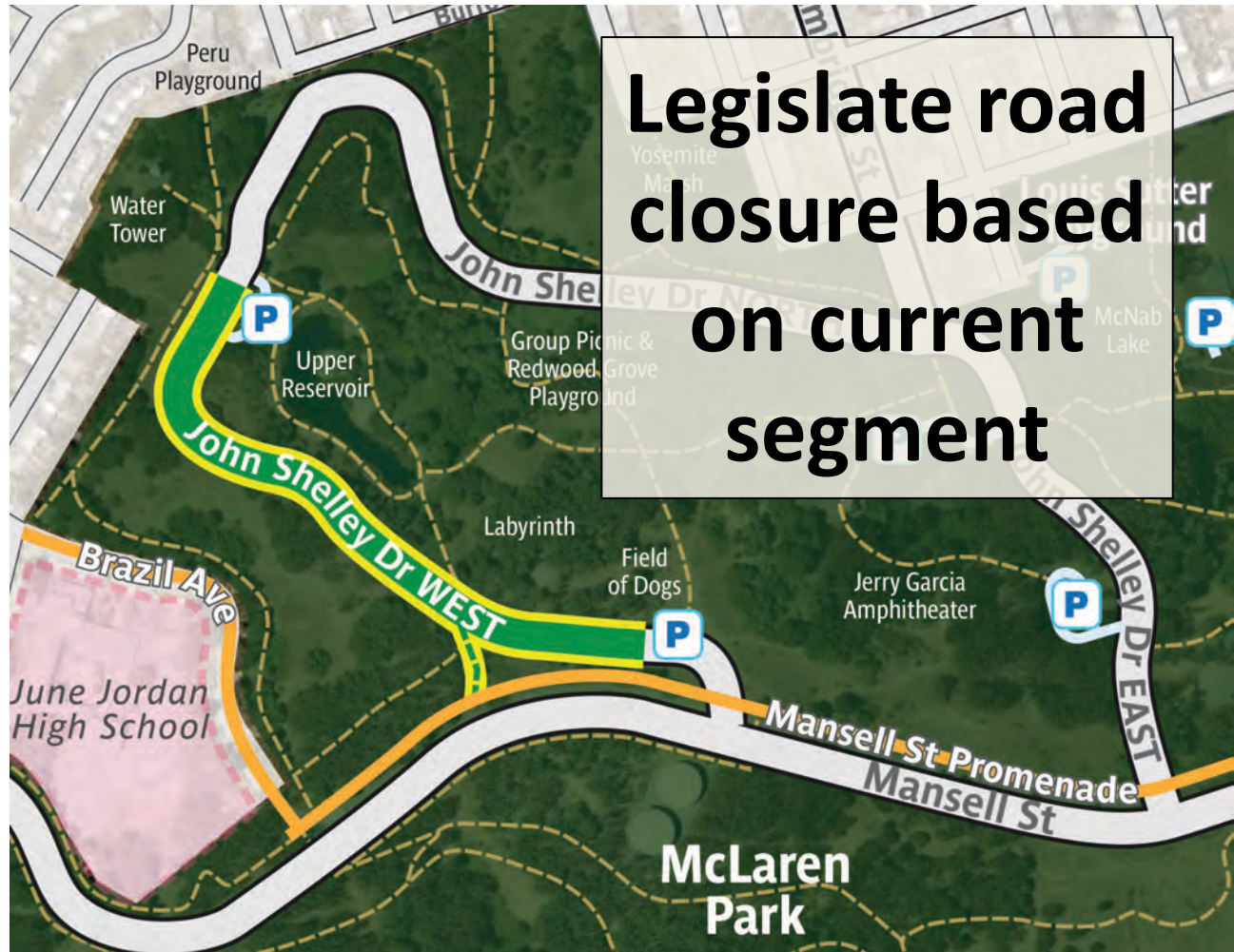
Modified Promenade (2021):

- Based on community feedback
- Reestablished car access to Shelley Drive North to playground, picnic, and parking lot



Proposed Promenade Legislation

- Half mile long
- Mostly flat
- New trail connects with existing Mansell Promenade
- Car access to key sites
 - Playground
 - Picnic Areas
 - Play Area for Dogs
 - Performance Space
- No neighborhood traffic impacts



Promenade

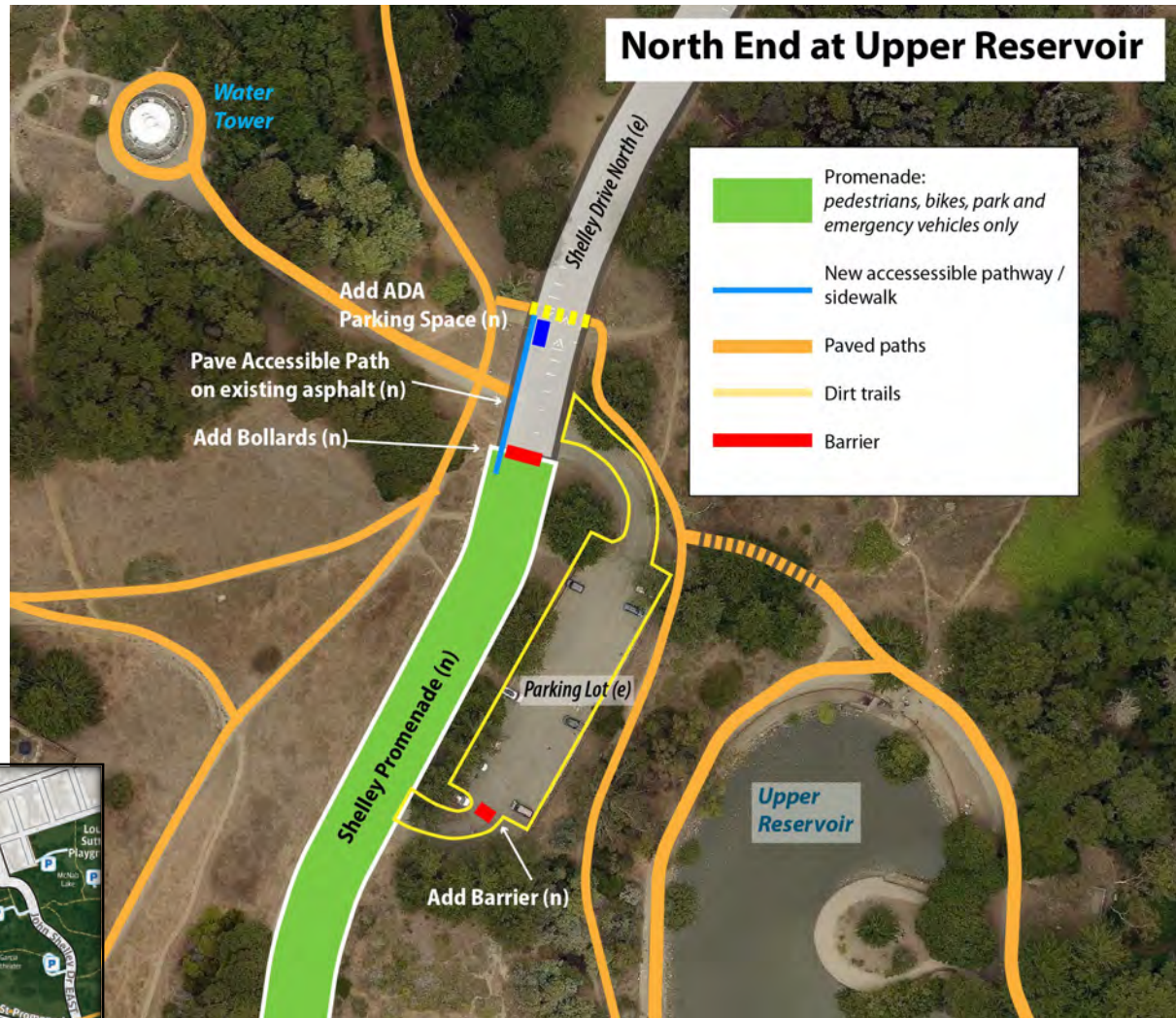
Parking and Access to Promenade

Parking

- Parking enhanced
- Add accessible blue zone parking space

Pedestrian, Transit & Bike Access

- New path connects to Mansell Promenade and Muni
- Add bollards and barriers



Promenade

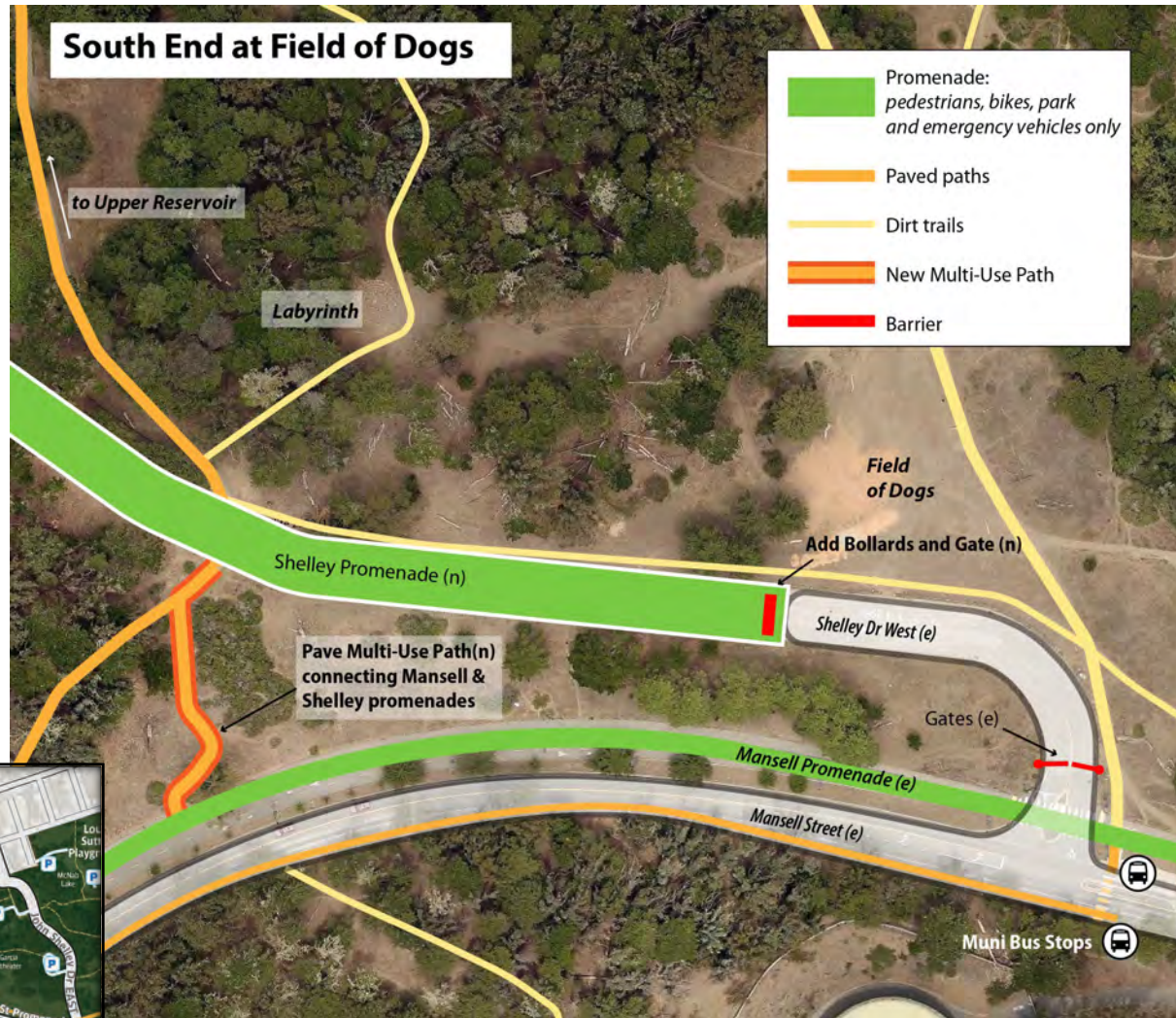
Parking and Access to Promenade

Parking

- Parking enhanced
- Add accessible blue zone parking space

Pedestrian, Transit & Bike Access

- New path connects to Mansell Promenade and Muni
- Add bollards and barriers



Public Outreach

- 3 community meetings
 - One focused on promenade configuration
- Strong Public Support
- Non-vehicular uses surpass pre-pandemic vehicular uses
- SFMTA endorsement



San Francisco Recreation & Park Department

Thank You



Inspire, Connect, Play!