

OWNER'S STATEMENT

THE UNDERSIGNED OWNER HAVING RECORD TITLE INTEREST NECESSARY TO CONSENT TO THE PREPARATION AND FILING OF THIS MAP, TITLED FINAL TRANSFER MAP NO. 9837, COMPRISING 13 SHEETS. BY OUR SIGNATURES WE CONSENT TO THE PREPARATION AND RECORDATION OF SAID MAP.

OWNER: TREASURE ISLAND DEVELOPMENT AUTHORITY, A CALIFORNIA NON-PROFIT PUBLIC BENEFIT CORPORATION IN ITS ORDINARY CAPACITY AND AS TRUSTEE OF THE PUBLIC TRUST FOR FISHERIES, NAVIGATION AND COMMERCE.

BY: Robert P Beck
NAME: Robert P Beck
TITLE: Treasure Island Director

OWNER'S ACKNOWLEDGMENT

A NOTARY PUBLIC OR OTHER OFFICER COMPLETING THIS CERTIFICATE VERIFIES ONLY THE IDENTITY OF THE INDIVIDUAL WHO SIGNED THE DOCUMENT TO WHICH THIS CERTIFICATE IS ATTACHED, AND NOT THE TRUTHFULNESS, ACCURACY, OR VALIDITY OF THAT DOCUMENT

STATE OF California
COUNTY OF San Francisco
ON 6/14/19 2019, BEFORE ME, Lauren Skellen, A NOTARY

PUBLIC, PERSONALLY APPEARED, Robert P. Beck, WHO PROVED TO ME ON THE BASIS OF SATISFACTORY EVIDENCE TO BE THE PERSON(S) WHOSE NAME(S) ARE SUBSCRIBED TO THE WITHIN INSTRUMENT AND ACKNOWLEDGED TO ME THAT SHE/THEY EXECUTED THE SAME IN HIS/HER/THEIR AUTHORIZED CAPACITY(IES), AND THAT BY HIS/HER/THEIR SIGNATURE(S) ON THE INSTRUMENT THE PERSON(S), OR THE ENTITY UPON BEHALF OF WHICH THE PERSON(S) ACTED, EXECUTED THE INSTRUMENT.

I CERTIFY UNDER PENALTY OF PERJURY UNDER THE LAWS OF THE STATE OF CALIFORNIA THAT THE FOREGOING PARAGRAPH IS TRUE AND CORRECT.

WITNESS MY HAND AND OFFICIAL SEAL:

NOTARY'S SIGNATURE: [Signature]

NOTARY PUBLIC, STATE OF CA COMMISSION No.: 2188411

MY COMMISSION EXPIRES: 3/26/21

COUNTY OF PRINCIPAL PLACE OF BUSINESS: San Francisco

FIELD SURVEY COMPLETION

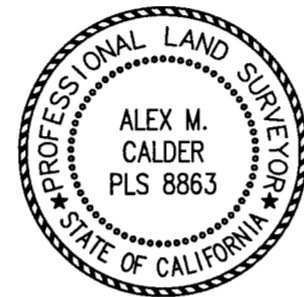
THE SURVEY FOR THIS MAP WAS COMPLETED ON MAY 3, 2018. ALL PHYSICAL DETAILS INCLUDING CITY AND PRIVATE MONUMENTATION SHOWN HEREON EXISTED AS OF THE FIELD SURVEY COMPLETION DATE, UNLESS OTHERWISE NOTED.

SURVEYOR'S STATEMENT

THIS MAP WAS PREPARED BY ME OR UNDER MY DIRECTION AND IS BASED UPON A FIELD SURVEY IN CONFORMANCE WITH THE REQUIREMENTS OF THE SUBDIVISION MAP ACT AND LOCAL ORDINANCE, AT THE REQUEST OF THE OWNERS LISTED HEREIN, IN JUNE 2019. I HEREBY STATE THAT ALL THE MONUMENTS ARE OF THE CHARACTER AND OCCUPY THE POSITIONS INDICATED OR THAT THEY WILL BE SET IN THOSE POSITIONS BEFORE APRIL 2021, AND THAT THE MONUMENTS ARE, OR WILL BE, SUFFICIENT TO ENABLE THE SURVEY TO BE RETRACED, AND THAT THIS FINAL TRANSFER MAP SUBSTANTIALLY CONFORMS TO THE CONDITIONALLY APPROVED TENTATIVE TRANSFER MAP.

DATE: 6-13-2019

BY: Alex Calder
ALEX CALDER, PLS 8863



CITY AND COUNTY SURVEYOR'S STATEMENT

I HEREBY STATE THAT I HAVE EXAMINED THIS MAP; THAT THE SUBDIVISION AS SHOWN IS SUBSTANTIALLY THE SAME AS IT APPEARED ON THE TENTATIVE TRANSFER MAP, AND ANY APPROVED ALTERATIONS THEREOF; THAT ALL PROVISIONS OF THE CALIFORNIA SUBDIVISION MAP ACT AND ANY LOCAL ORDINANCES APPLICABLE AT THE TIME OF APPROVAL OF THE TENTATIVE TRANSFER MAP, HAVE BEEN COMPLIED WITH; AND THAT I AM SATISFIED THIS MAP IS TECHNICALLY CORRECT.

BRUCE R. STORRS, CITY AND COUNTY SURVEYOR
CITY AND COUNTY OF SAN FRANCISCO

DATE: JUNE 18 2019

BY: Bruce R. Storrs
BRUCE R. STORRS, L.S. 6914



CLERK'S STATEMENT

I, ANGELA CALVILLO, CLERK OF THE BOARD OF SUPERVISORS OF THE CITY AND COUNTY OF SAN FRANCISCO, STATE OF CALIFORNIA, HEREBY STATE THAT SAID BOARD OF SUPERVISORS BY ITS MOTION NO. _____ ADOPTED _____, 2019, APPROVED THIS MAP ENTITLED, FINAL TRANSFER MAP NO. 9837, COMPRISING 13 SHEETS.

IN TESTIMONY WHEREOF, I HAVE HEREUNTO SUBSCRIBED MY HAND AND CAUSED THE SEAL OF THE OFFICE TO BE AFFIXED.

BY: _____ DATE: _____

CLERK OF THE BOARD OF SUPERVISORS
CITY AND COUNTY OF SAN FRANCISCO
STATE OF CALIFORNIA

BOARD OF SUPERVISOR'S APPROVAL

ON _____, 2019, THE BOARD OF SUPERVISORS OF THE CITY AND COUNTY OF SAN FRANCISCO, STATE OF CALIFORNIA APPROVED AND PASSED

MOTION NO. _____, A COPY OF WHICH IS ON FILE IN THE OFFICE OF

THE BOARD OF SUPERVISOR'S IN FILE NO. _____

TAX STATEMENT

I, ANGELA CALVILLO, CLERK OF THE BOARD OF SUPERVISORS OF THE CITY AND COUNTY OF SAN FRANCISCO, STATE OF CALIFORNIA, DO HEREBY STATE THAT THE SUBDIVIDER HAS FILED A STATEMENT FROM THE TREASURER AND TAX COLLECTOR OF THE CITY AND COUNTY OF SAN FRANCISCO, SHOWING THAT ACCORDING TO THE RECORDS OF HIS OR HER OFFICE THERE ARE NO LIENS AGAINST THIS SUBDIVISION OR ANY PART THEREOF FOR UNPAID STATE, COUNTY, MUNICIPAL OR LOCAL TAXES, OR SPECIAL ASSESSMENTS COLLECTED AS TAXES.

DATED _____ DAY OF _____, 2019

CLERK OF THE BOARD OF SUPERVISORS
CITY AND COUNTY OF SAN FRANCISCO
STATE OF CALIFORNIA

APPROVALS

THIS MAP IS APPROVED THIS _____ DAY OF _____, 2019.

BY ORDER NO. _____

BY: _____ DATE: _____

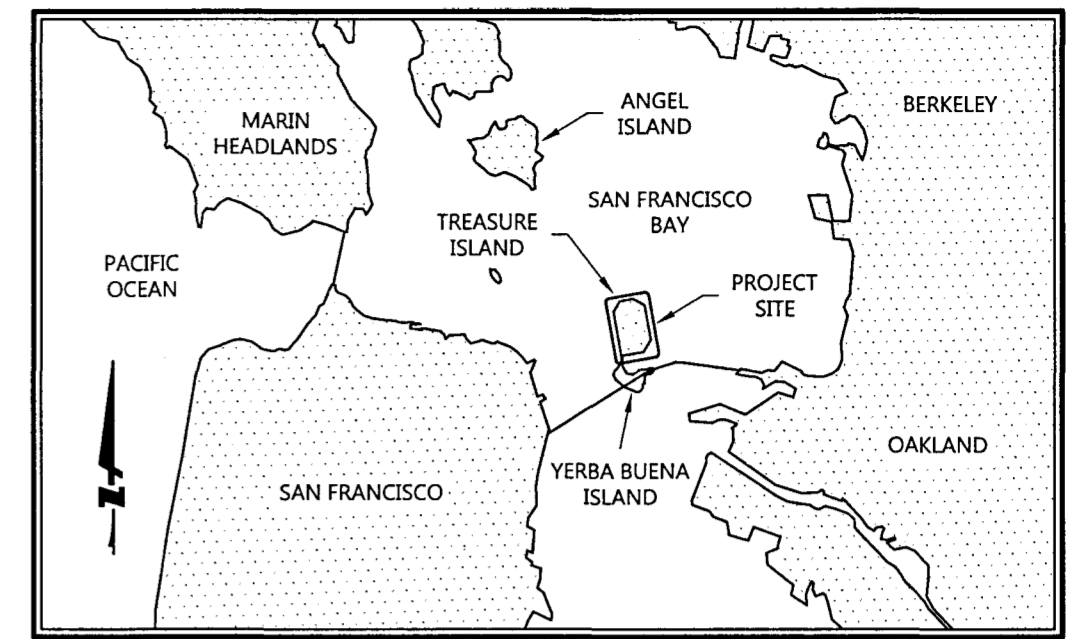
MOHAMMED NURU
DIRECTOR OF PUBLIC WORKS AND ADVISORY AGENCY
CITY AND COUNTY OF SAN FRANCISCO
STATE OF CALIFORNIA

APPROVED AS TO FORM

DENNIS J. HERRERA, CITY ATTORNEY

BY: _____

DEPUTY CITY ATTORNEY
CITY AND COUNTY OF SAN FRANCISCO



VICINITY MAP
NO SCALE

RECORDER'S STATEMENT

FILED THIS _____ DAY OF _____, 2019, AT _____ M, IN BOOK _____ OF

_____ MAPS AT PAGES _____ AT THE REQUEST OF FIRST AMERICAN TITLE COMPANY.

BY: _____

COUNTY RECORDER
CITY AND COUNTY OF SAN FRANCISCO
STATE OF CALIFORNIA

FINAL TRANSFER MAP NO. 9837

TREASURE ISLAND, PID 9837 - PHASE 1

A 98 LOT SUBDIVISION, BEING A MERGER AND SUBDIVISION OF PARCELS N1.1.R1, N3.2, N1.1.R2, N1.1.R4, N1.1.R3, N1.1.R5, N1.1.R6, N2.2, N3.1, SPT1.3, STT1.4, SFT1.3, STT1.5, STT1.6, STT1.7, AND STT1.8, AS SHOWN ON THAT RECORD OF SURVEY NO. 9035, FILED FOR RECORD ON MAY 14, 2019 IN BOOK HH OF SURVEY MAPS AT PAGES 120 THROUGH 123, TOGETHER WITH LOT 17 AND LOT 21 AS SHOWN ON THAT FINAL MAP NO. 9235, RECORDED ON SEPTEMBER 13, 2018 IN BOOK 134 OF CONDOMINIUM MAPS AT PAGES 170 THROUGH 179, OFFICIAL RECORDS OF SAN FRANCISCO COUNTY

CITY AND COUNTY OF SAN FRANCISCO STATE OF CALIFORNIA

JUNE 2019



SHEET 1 OF 13

LOT INFORMATION TABLE				
LOT NO.	AREA (SQ.FT.)	ASSESSOR'S PARCEL NUMBER	LAND USE	PUBLIC TRUST STATUS
LOT 1	304,726	8928-0001	FUTURE WASTE WATER TREATMENT PLANT	FUTURE NON-TRUST
LOT 2	35,094	8933-0001	DEVELOPMENT	NON-TRUST
LOT 3	197,007	8934-0001	DEVELOPMENT	FUTURE PUBLIC TRUST
LOT 4	52,203	8937-0001	DEVELOPMENT	NON-TRUST
LOT 5	35,523	8933-0002	DEVELOPMENT	NON-TRUST
LOT 6	46,954	8944-0001	DEVELOPMENT	FUTURE NON-TRUST
LOT 7	81,427	8943-0001	DEVELOPMENT	FUTURE NON-TRUST
LOT 8	101,459	8936-0001	DEVELOPMENT	NON-TRUST
LOT 9	43,089	8942-0001	DEVELOPMENT	FUTURE NON-TRUST
LOT 10	32,470	8941-0001	DEVELOPMENT	FUTURE NON-TRUST
LOT 11	61,481	1939-0102	DEVELOPMENT	FUTURE NON-TRUST
LOT 12	47,080	8940-0001	DEVELOPMENT	FUTURE NON-TRUST
LOT 13	81,427	8939-0001	DEVELOPMENT	FUTURE NON-TRUST
LOT 14	73,365	8938-0001	DEVELOPMENT	FUTURE NON-TRUST
LOT 15	19,153	8938-0002	DEVELOPMENT	NON-TRUST
LOT 16	43,525	8937-0002	DEVELOPMENT	NON-TRUST
LOT 17	6,008	8939-0003	DEVELOPMENT	FUTURE NON-TRUST
LOT 18	85,041	8945-0001	DEVELOPMENT	FUTURE PUBLIC TRUST
LOT 19	48,956	8941-0002	DEVELOPMENT	FUTURE NON-TRUST
LOT 20	53,176	8936-0002	DEVELOPMENT	NON-TRUST
LOT 21	67,041	8935-0001	DEVELOPMENT	NON-TRUST
LOT 22	5,465	8935-0002	DEVELOPMENT	FUTURE NON-TRUST
LOT 23	32,788	8934-0002	DEVELOPMENT	FUTURE NON-TRUST
LOT 24	73,418	8946-0001	OPEN SPACE	FUTURE PUBLIC TRUST
LOT 25	15,666	8934-0003	DEVELOPMENT	NON-TRUST
LOT 26	61,333	8933-0003	DEVELOPMENT	NON-TRUST
LOT 27	24,397	8932-0001	DEVELOPMENT	NON-TRUST
LOT 28	152,212	8931-0001	DEVELOPMENT	PUBLIC TRUST
LOT 29	38,473	8931-0002	DEVELOPMENT	NON-TRUST
LOT 30	69,802	8927-0001	OPEN SPACE	NON-TRUST
LOT 31	57,535	8930-0001	DEVELOPMENT	NON-TRUST
LOT 32	81,966	8930-0002	DEVELOPMENT	NON-TRUST
LOT 33	76,872	8933-0004	DEVELOPMENT	NON-TRUST
LOT A	37,230	1939-0103	FUTURE PUBLIC STREET	FUTURE PUBLIC TRUST
LOT B	29,399	1939-0104	FUTURE PUBLIC STREET	FUTURE PUBLIC TRUST
LOT C	17,429	1939-0105	FUTURE PUBLIC STREET	FUTURE NON-TRUST
LOT D	15,733	1939-0106	FUTURE PUBLIC STREET	FUTURE PUBLIC TRUST
LOT E	18,963	1939-0107	FUTURE PUBLIC STREET	FUTURE PUBLIC TRUST
LOT F	34,847	1939-0108	FUTURE PUBLIC STREET	FUTURE PUBLIC TRUST
LOT G	23,138	1939-0109	FUTURE PUBLIC STREET	FUTURE NON-TRUST
LOT H	17,429	1939-0110	FUTURE PUBLIC STREET	FUTURE NON-TRUST
LOT I	20,708	1939-0111	FUTURE PUBLIC STREET	FUTURE PUBLIC TRUST
LOT J	29,551	1939-0112	FUTURE PUBLIC STREET	FUTURE NON-TRUST
LOT K	20,004	1939-0113	FUTURE PUBLIC STREET	FUTURE NON-TRUST
LOT L	21,768	1939-0114	FUTURE PUBLIC STREET	FUTURE NON-TRUST
LOT M	26,388	1939-0115	FUTURE PUBLIC STREET	NON-TRUST
LOT N	17,429	1939-0116	FUTURE PUBLIC STREET	FUTURE NON-TRUST
LOT O	20,829	1939-0117	FUTURE PUBLIC STREET	FUTURE PUBLIC TRUST
LOT P	39,206	1939-0118	FUTURE PUBLIC STREET	FUTURE PUBLIC TRUST
LOT Q	19,514	1939-0119	FUTURE PUBLIC STREET	FUTURE NON-TRUST
LOT R	22,372	1939-0120	FUTURE PUBLIC STREET	FUTURE NON-TRUST
LOT S	24,264	1939-0121	FUTURE PUBLIC STREET	NON-TRUST
LOT T	25,504	1939-0122	FUTURE PUBLIC STREET	FUTURE PUBLIC TRUST
LOT U	48,939	1939-0123	FUTURE PUBLIC STREET	FUTURE PUBLIC TRUST
LOT V	5,844	1939-0124	FUTURE PUBLIC STREET	FUTURE PUBLIC TRUST
LOT W	13,608	1939-0125	FUTURE PUBLIC STREET	PUBLIC TRUST
LOT X	29,089	1939-0126	FUTURE PUBLIC STREET	PUBLIC TRUST
LOT Y	17,206	1939-0127	FUTURE PUBLIC STREET	PUBLIC TRUST
LOT Z	1,417	1939-0128	FUTURE PUBLIC STREET	FUTURE PUBLIC TRUST

LOT INFORMATION TABLE				
LOT NO.	AREA (SQ.FT.)	ASSESSOR'S PARCEL NUMBER	LAND USE	PUBLIC TRUST STATUS
LOT AA	23,975	1939-0129	FUTURE PUBLIC STREET	FUTURE NON-TRUST
LOT AB	20,819	1939-0130	FUTURE PUBLIC STREET	NON-TRUST
LOT AC	20,488	1939-0131	FUTURE PUBLIC STREET	NON-TRUST
LOT AD	17,854	1939-0132	FUTURE PUBLIC STREET	FUTURE PUBLIC TRUST
LOT AE	38,340	1939-0133	FUTURE PUBLIC STREET	NON-TRUST
LOT AF	9,316	1939-0134	FUTURE PUBLIC STREET	NON-TRUST
LOT AG	15,689	1939-0135	FUTURE PUBLIC STREET	FUTURE PUBLIC TRUST
LOT AH	27,652	8934-0004	OPEN SPACE	PUBLIC TRUST
LOT AI	68,959	8945-0002	OPEN SPACE	PUBLIC TRUST
LOT AJ	25,858	1939-0136	FUTURE PUBLIC STREET	PUBLIC TRUST
LOT AK	26,929	1939-0137	FUTURE PUBLIC STREET	NON-TRUST
LOT AL	48,960	1939-0138	FUTURE PUBLIC STREET	PUBLIC TRUST
LOT AM	29,729	1939-0139	FUTURE PUBLIC STREET	PUBLIC TRUST
LOT AN	24,359	1939-0140	FUTURE PUBLIC STREET	NON-TRUST
LOT AO	20,854	1939-0141	FUTURE PUBLIC STREET	PUBLIC TRUST
LOT AP	20,233	1939-0142	FUTURE PUBLIC STREET	PUBLIC TRUST
LOT AQ	27,706	1939-0143	FUTURE PUBLIC STREET	PUBLIC TRUST
LOT AR	23,499	1939-0144	FUTURE PUBLIC STREET	NON-TRUST
LOT AS	25,702	1939-0145	FUTURE PUBLIC STREET	PUBLIC TRUST
LOT AT	151,949	8945-0003	OPEN SPACE	FUTURE PUBLIC TRUST
LOT AU	33,577	1939-0146	FUTURE PUBLIC STREET	FUTURE PUBLIC TRUST
LOT AV	24,004	8934-0005	OPEN SPACE	PUBLIC TRUST
LOT AW	634,318	8926-0001	OPEN SPACE	SEE NOTE 1 ON THIS SHEET
LOT AX	19,939	8945-0004	OPEN SPACE	FUTURE PUBLIC TRUST
LOT AY	73,992	8927-0002	OPEN SPACE	FUTURE NON-TRUST
LOT AZ	541,175	8946-0002	OPEN SPACE	PUBLIC TRUST
LOT BA	144,077	8946-0003	OPEN SPACE	FUTURE PUBLIC TRUST
LOT BB	106,933	8946-0004	OPEN SPACE	FUTURE PUBLIC TRUST
LOT BC	374,984	8927-0003	OPEN SPACE	FUTURE NON-TRUST
LOT BD	842,921	8946-0005	OPEN SPACE	PUBLIC TRUST
LOT BE	482,200	8925-0001	OPEN SPACE	NON-TRUST
LOT BF	60	1939-0147	FUTURE PUBLIC STREET	NON-TRUST
LOT BG	10,072	1939-0148	FUTURE PUBLIC STREET	PUBLIC TRUST
LOT BH	1,565	8934-0006	DEVELOPMENT	FUTURE NON-TRUST
LOT BI	1,966	8934-0007	DEVELOPMENT	FUTURE NON-TRUST
LOT BJ	3,976	8931-0003	OPEN SPACE	PUBLIC TRUST
LOT BK	5,508	8931-0004	OPEN SPACE	PUBLIC TRUST
LOT BL	23,457	1939-0149	FUTURE PUBLIC STREET	PUBLIC TRUST
LOT BM	285,814	8945-0005	FUTURE PHASE - SEE NOTE 2 ON THIS SHEET	SEE NOTE 1 ON THIS SHEET

THIS MAP IS SUBJECT TO THE TERMS AND CONDITIONS OF THE FOLLOWING:

AN EASEMENT FOR AN UNDERGROUND CONDUIT STRUCTURE FOR A SUBMARINE CABLE AND INCIDENTAL PURPOSES, RECORDED MAY 3, 1993 AS INSTRUMENT NO. F347788, REEL F870, IMAGE 718 OF OFFICIAL RECORDS.

A RESERVED EASEMENT FOR INGRESS AND EGRESS IN THE DOCUMENT ENTITLED "QUITCLAIM DEED FOR THE INITIAL CONVEYANCE NAVAL STATION TREASURE ISLAND AND ENVIRONMENTAL RESTRICTION PURSUANT TO CIVIL CODE SECTION 1471" RECORDED MAY 29, 2015 AS INSTRUMENT NO. 2015-K068758 OF OFFICIAL RECORDS. IN FAVOR OF: THE UNITED STATES

A RESERVED EASEMENT FOR INGRESS AND EGRESS IN THE DOCUMENT ENTITLED "QUITCLAIM DEED FOR THE INITIAL CONVEYANCE YERBA BUENA ISLAND AND ENVIRONMENTAL RESTRICTION PURSUANT TO CIVIL CODE SECTION 1471" RECORDED MAY 29, 2015 AS INSTRUMENT NO. 2015-K068759 OF OFFICIAL RECORDS. IN FAVOR OF: THE UNITED STATES

EASEMENTS FOR THE PURPOSES STATED BELOW AND INCIDENTAL PURPOSES, AS RESERVED BY TREASURE ISLAND DEVELOPMENT AUTHORITY IN THE DOCUMENT ENTITLED "QUITCLAIM DEED AND RESERVATION OF EASEMENTS" RECORDED NOVEMBER 10, 2015 AS INSTRUMENT NO. 2015-K154698 OF OFFICIAL RECORDS. FOR: UTILITY FACILITIES, INCLUDING STORM DRAINAGE INFRASTRUCTURE

A RESERVED EASEMENT FOR INGRESS AND EGRESS IN THE DOCUMENT ENTITLED "QUITCLAIM DEED FOR BUILDING 3 AND SITE 21 PARCEL NAVAL STATION TREASURE ISLAND AND ENVIRONMENTAL RESTRICTION PURSUANT TO CIVIL CODE SECTION 1471" RECORDED SEPTEMBER 20, 2016 AS INSTRUMENT NO. 2016-K331130 OF OFFICIAL RECORDS. IN FAVOR OF: UNITED STATES

A RESERVED EASEMENT FOR INGRESS AND EGRESS IN THE DOCUMENT ENTITLED "QUITCLAIM DEED FOR BUILDING 233 AND PARCELS UC-1 AND UC-2 NAVAL STATION TREASURE ISLAND AND ENVIRONMENTAL RESTRICTION PURSUANT TO CIVIL CODE SECTION 1471" RECORDED AUGUST 11, 2017 AS INSTRUMENT NO. 2017-K493401 OF OFFICIAL RECORDS. IN FAVOR OF: UNITED STATES

THE TERMS AND PROVISIONS CONTAINED IN THE DOCUMENT ENTITLED "SECOND MEMORANDUM MEMORIALIZING LOCATION OF RESERVED EASEMENTS ON TREASURE ISLAND AND YERBA BUENA ISLAND" RECORDED JULY 20, 2018 AS INSTRUMENT NO. 2018-K641578 OF OFFICIAL RECORDS.

THE ABOVE EASEMENTS ARE DEPICTED ON SHEET 4.

PROPOSED ASSESSOR PARCEL NUMBERS

PROPOSED ASSESSOR PARCEL NUMBERS ARE FOR INFORMATIONAL PURPOSES ONLY AND ARE NOT TO BE RELIED UPON FOR ANY OTHER PURPOSE.

SURVEYOR'S NOTES

- LOT TO BE SUBDIVIDED INTO TRUST AND NON-TRUST LOTS PURSUANT TO FUTURE FINAL MAP AND FUTURE TRUST EXCHANGE CONVEYANCES.
- FUTURE PHASED FINAL TRANSFER MAPS BASED ON TENTATIVE TRANSFER MAP NO. 9837 MAY INCLUDE AND FURTHER SUBDIVIDE LOT BM WITHOUT AN AMENDMENT TO THAT TENTATIVE TRANSFER MAP OR AN ADDITIONAL TENTATIVE TRANSFER MAP.

FINAL TRANSFER MAP NO. 9837

TREASURE ISLAND, PID 9837 - PHASE 1

A 98 LOT SUBDIVISION, BEING A MERGER AND SUBDIVISION OF PARCELS N1.1.R1, N1.1.R2, N1.1.R4, N1.1.R3, N1.1.R5, N1.1.R6, N2.2, N3.1, N3.2, SPT1.2, SPT1.3, STT1.4, STT1.5, STT1.6, STT1.7, AND STT1.8, AS SHOWN ON THAT RECORD OF SURVEY NO. 9035, FILED FOR RECORD ON MAY 14, 2019 IN BOOK HH OF SURVEY MAPS AT PAGES 120 THROUGH 123, TOGETHER WITH LOT 17 AND LOT 21 AS SHOWN ON THAT FINAL MAP NO. 9235, RECORDED ON SEPTEMBER 13, 2018 IN BOOK 134 OF CONDOMINIUM MAPS AT PAGES 170 THROUGH 179, OFFICIAL RECORDS OF SAN FRANCISCO COUNTY

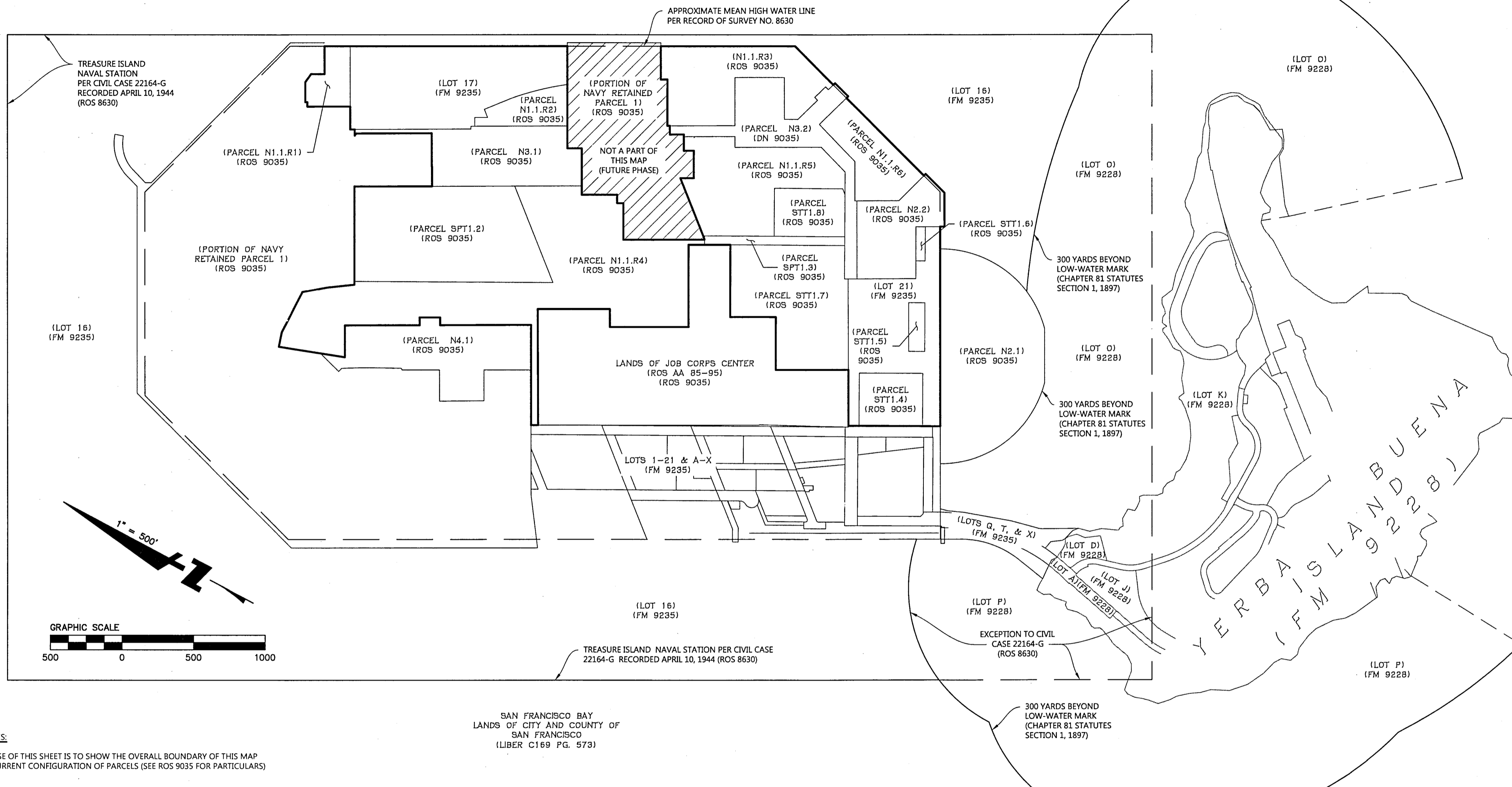
CITY AND COUNTY OF SAN FRANCISCO STATE OF CALIFORNIA

JUNE 2019



SHEET 2 OF 13

SAN FRANCISCO BAY
LANDS OF CITY AND COUNTY OF
SAN FRANCISCO
(LIBER C169 PG. 573)



SURVEYOR'S NOTES:

1. THE PURPOSE OF THIS SHEET IS TO SHOW THE OVERALL BOUNDARY OF THIS MAP AND THE CURRENT CONFIGURATION OF PARCELS (SEE ROS 9035 FOR PARTICULARS)

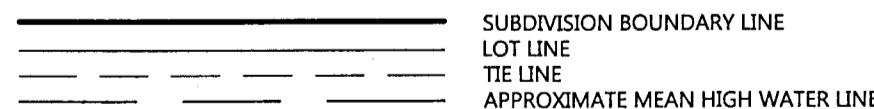
RECORD REFERENCES

1. RECORD OF SURVEY NO. 8080, FILED FOR RECORD ON APRIL 4, 2014 IN BOOK EE OF SURVEY MAPS AT PAGES 147-157, AS DN 20141860036, SAN FRANCISCO COUNTY RECORDS
2. RECORD OF SURVEY NO. 8630, FILED FOR RECORD ON MAY 29, 2015 IN BOOK FF OF SURVEY MAPS AT PAGES 62-78, AS DN 2015K068760, SAN FRANCISCO COUNTY RECORDS
3. RECORD OF SURVEY NO. 8639, FILED FOR RECORD ON NOVEMBER 10, 2015 IN BOOK FF OF SURVEY MAPS AT PAGES 152-173, AS DN 2015K154702, SAN FRANCISCO COUNTY RECORDS
4. FINAL MAP NO. 9228, FILED FOR RECORD ON APRIL 19, 2018 IN BOOK 134 OF CONDOMINIUM MAPS AT PAGES 7-23, AS DN 2018K602992, SAN FRANCISCO COUNTY RECORDS
5. FINAL MAP NO. 9235, FILED FOR RECORD ON SEPTEMBER 13, 2018 IN BOOK 134 OF CONDOMINIUM MAPS AT PAGES 170-179, AS DN 2018K672373, SAN FRANCISCO COUNTY RECORDS
6. RECORD OF SURVEY NO. 9035, FILED FOR RECORD ON MAY 14, 2019 IN BOOK HH OF SURVEY MAPS AT PAGES 120-123, AS DN 2019K766208, SAN FRANCISCO COUNTY RECORDS

ABBREVIATIONS:

CCSF	CITY AND COUNTY OF SAN FRANCISCO
DIAM.	DIAMETER
DN	DOCUMENT NUMBER
FND	FOUND
FTM	FINAL TRANSFER MAP
FM	FINAL MAP
IP	IRON PIPE
LS/LS.	LICENSED SURVEYOR
NAD83	NORTH AMERICAN DATUM OF 1983
O.R.	ORIGINAL RECORDS
PLS	PROFESSIONAL LAND SURVEYOR
POR.	PORTION OF
(R)	RADIAL BEARING
ROS	RECORD OF SURVEY
SLT	STATE LANDS TRANSFER
SQ. FT.	SQUARE FEET
(T)	TOTAL
TIDA	TREASURE ISLAND DEVELOPMENT AUTHORITY
USC&GS	UNITED STATES COAST AND GEODETIC SURVEY

LINE TYPES



LEGEND



FINAL TRANSFER MAP NO. 9837

TREASURE ISLAND, PID 9837 - PHASE 1

A 98 LOT SUBDIVISION, BEING A MERGER AND SUBDIVISION OF PARCELS N1.1.R1, N1.1.R2, N1.1.R4, N1.1.R3, N1.1.R5, N1.1.R6, N2.2, N3.1, N3.2, SPT1.2, SPT1.3, SPT1.4, SPT1.5, SPT1.6, SPT1.7, AND SPT1.8, AS SHOWN ON THAT RECORD OF SURVEY NO. 9035, FILED FOR RECORD ON MAY 14, 2019 IN BOOK HH OF SURVEY MAPS AT PAGES 120 THROUGH 123, TOGETHER WITH LOT 17 AND LOT 21 AS SHOWN ON THAT FINAL MAP NO. 9235, RECORDED ON SEPTEMBER 13, 2018 IN BOOK 134 OF CONDOMINIUM MAPS AT PAGES 170 THROUGH 179, OFFICIAL RECORDS OF SAN FRANCISCO COUNTY

CITY AND COUNTY OF SAN FRANCISCO STATE OF CALIFORNIA

JUNE 2019

BKF 100+ YEARS BKF ENGINEERS
255 SHORELINE DR., SUITE 200
REDWOOD CITY, CA 94065
(650) 482-6300
ENGINEERS . SURVEYORS . PLANNERS

SHEET 3 OF 13

HORIZONTAL DATUM & REFERENCE SYSTEM

THE HORIZONTAL DATUM IS THE NORTH AMERICAN DATUM OF 1983: NAD83(2011) 2010.00 EPOCH REFERENCED BY THE SAN FRANCISCO HIGH PRECISION GNSS NETWORK (2013 CCSF-HPN). PLANE COORDINATES ARE BASED ON THE "CITY & COUNTY OF SAN FRANCISCO 2013 HIGH PRECISION NETWORK" COORDINATE SYSTEM (CCSF-CS13). THE CCSF-CS13 IS A LOW DISTORTION GRID PROJECTION DESIGNED FOR CCSF TO PROVIDE GROUND-PRECISION COORDINATES IN A LOW DISTORTION PLANE COORDINATE SYSTEM (COMBINED SCALE FACTOR = 1.0000275). (FOR FURTHER INFORMATION, SEE RECORD OF SURVEY NO. 8080, FILED FOR RECORD ON APRIL 4, 2014 IN BOOK EE OF SURVEY MAPS AT PAGES 147 THROUGH 157, INCLUSIVE, AS DOCUMENT NUMBER 2014-J860036, OFFICIAL RECORDS OF THE SAN FRANCISCO COUNTY RECORDER.)

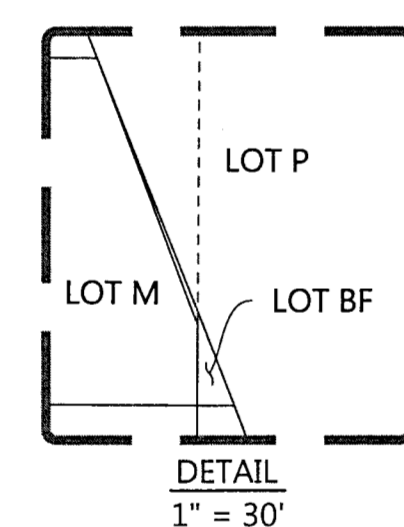
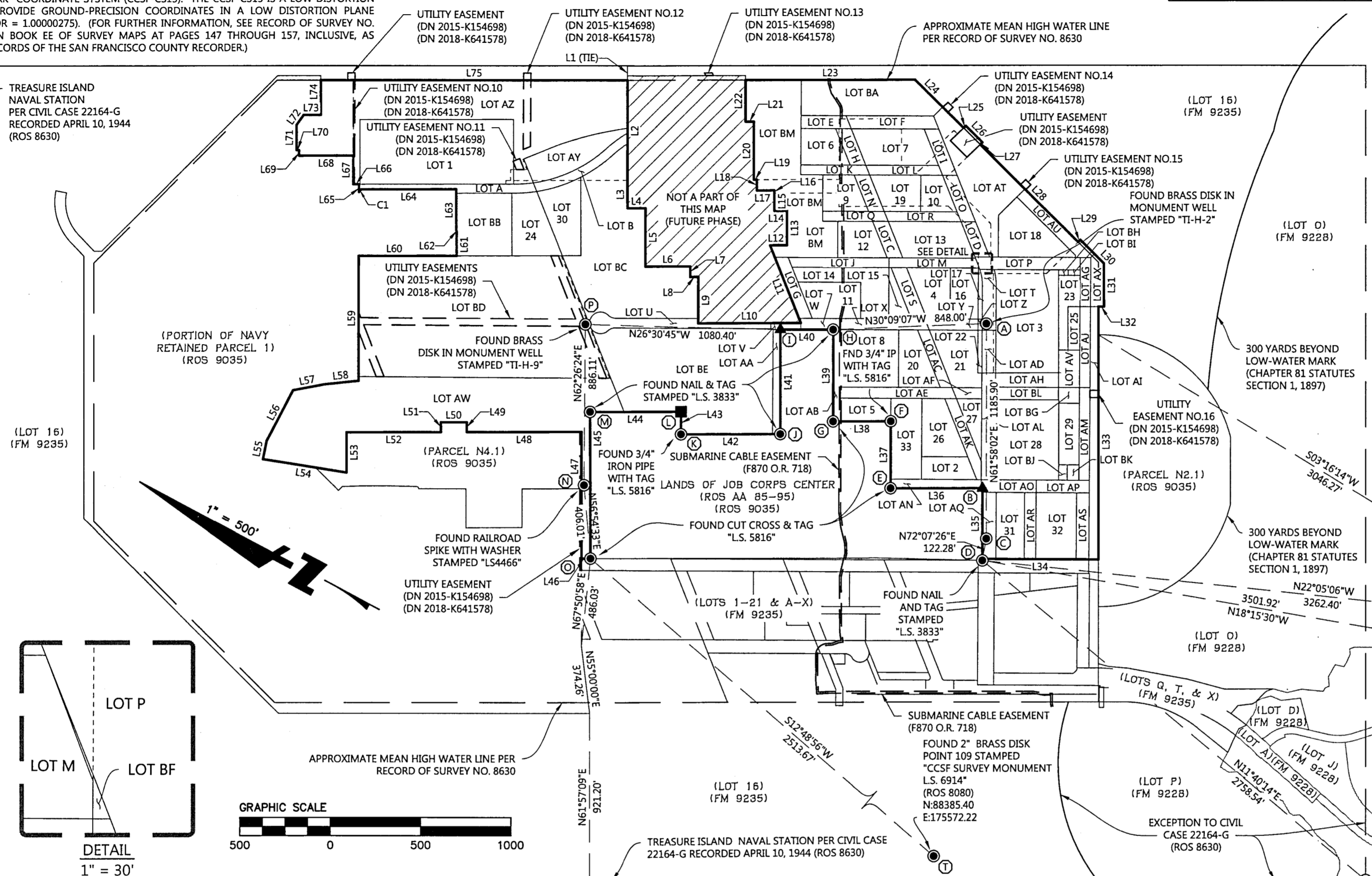
**SAN FRANCISCO BAY
LANDS OF CITY AND COUNTY OF
SAN FRANCISCO
(LIBER C169 PG. 573)**

CURVE TABLE			
CURVE NO.	RADIUS	DELTA	LENGTH
C1	57.40'	020°36'36"	20.65'

LINE TABLE		
LINE NO.	DIRECTION	LENGTH
L1	N61°56'26"E	79.15'
L2	N62°00'00"E	555.38'
L3	N61°50'00"E	154.77'
L4	S28°10'00"E	100.26'
L5	S62°00'00"W	324.69'
L6	S28°10'00"E	247.43'
L7	S62°00'00"W	58.23'
L8	S28°10'00"E	44.11'
L9	S62°00'00"W	255.94'
L10	S28°10'00"E	568.17'
L11	S40°20'00"W	461.31'
L12	S28°10'00"E	93.61'
L13	N62°00'00"E	191.28'
L14	N28°10'00"W	70.00'
L15	N62°00'00"E	98.14'
L16	N61°50'00"E	15.32'
L17	N28°10'00"W	97.12'
L18	N61°50'00"E	59.68'
L19	S28°10'00"E	16.72'
L20	S62°00'00"W	321.82'
L21	S28°10'00"E	46.04'
L22	S62°00'00"W	232.21'
L23	S28°02'51"E	937.98'
L24	S16°57'09"W	379.90'
L25	S72°00'00"E	16.88'

LINE TABLE		
LINE NO.	DIRECTION	LENGTH
L26	S16°57'09"W	130.02'
L27	N72°00'00"W	16.88'
L28	S16°57'09"W	765.63'
L29	S73°00'00"E	16.87'
L30	S16°57'09"W	185.40'
L31	S61°50'00"W	237.32'
L32	N28°10'00"W	30.41'
L33	S61°57'09"W	1395.22'
L34	N27°41'00"W	642.34'
L35	N62°01'52"E	389.68'
L36	N28°02'05"W	508.79'
L37	N62°03'12"E	370.53'
L38	N28°02'05"W	318.79'
L39	N62°02'57"E	506.24'
L40	N27°59'23"W	292.22'
L41	S62°00'02"W	576.34'
L42	N28°02'05"W	549.69'
L43	N61°57'55"E	124.51'
L44	N28°02'05"W	504.06'
L45	S61°47'12"W	809.99'
L46	N28°02'05"W	49.51'
L47	N62°00'00"E	699.30'
L48	N28°10'00"W	635.72'
L49	S62°00'00"W	54.84'
L50	S28°10'00"E	142.72'

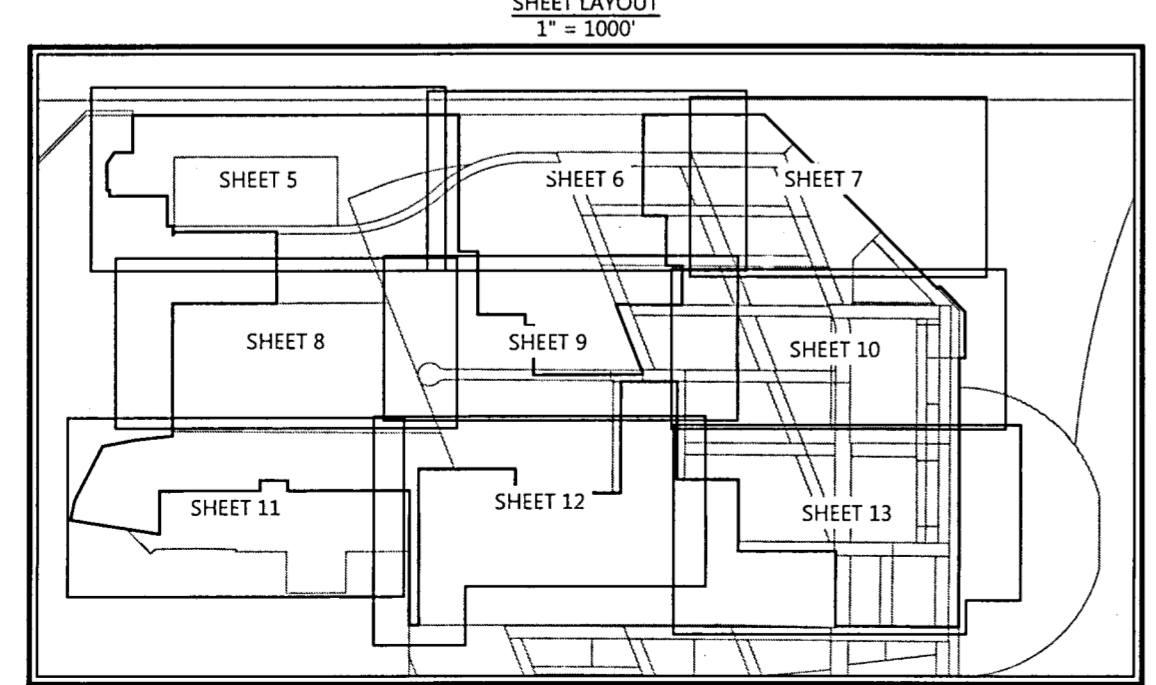
LINE TABLE		
LINE NO.	DIRECTION	LENGTH
L51	N62°00'00"E	54.84'
L52	N28°10'00"W	522.34'
L53	S62°00'00"W	223.26'
L54	N18°58'00"W	468.08'
L55	N73°16'00"E	102.93'
L56	N89°26'00"E	316.54'
L57	S38°43'00"E	175.96'
L58	S34°00'00"E	190.58'
L59	N62°00'00"E	686.63'
L60	S28°10'00"E	542.33'
L61	S61°50'00"W	137.58'
L62	S04°46'26"E	1.85'
L63	N61°50'00"E	231.48'
L64	N28°10'00"W	523.99'
L65	N61°50'00"E	43.63'
L66	N28°10'00"W	31.41'
L67	N62°00'00"E	158.36'
L68	N28°10'00"W	299.60'
L69	N62°00'00"E	31.33'
L70	N28°10'00"W	14.46'
L71	N62°00'00"E	138.91'
L72	S82°30'00"E	69.22'
L73	S28°10'00"E	94.34'
L74	N62°00'00"E	193.70'
L75	S28°02'51"E	1696.60'



MONUMENT IDENTIFICATION TABLE	
LABEL	MONUMENT ID (MID)
A	MID 29433
B	MID 29431
C	MID 29430
D	MID 29429
E	MID 29435
F	MID 29434
G	MID 29436
H	MID 29439
I	MID 29432
J	MID 29440
K	MID 29441
L	MID 29442
M	MID 29443
N	MID 29438
O	MID 29437
P	MID 22157
Q	MID 29428
R	MID 30007
S	MID 30000
T	MID 20787

SURVEYOR'S NOTES:

- THE PURPOSE OF THIS SHEET IS TO SHOW TIES TO THE MAP BOUNDARY RELATIVE TO THE CONTROLLING MONUMENTS, THE PERTINENT EASEMENTS AFFECTING THE SUBJECT PROPERTY, AND THE FINAL LOT CONFIGURATION. SEE SHEETS 5 TO 13 FOR FURTHER BREAKDOWN OF THE FINAL LOT BOUNDARIES.
- COMPLETE RECORDING INFORMATION FOR THE EASEMENTS SHOWN ON THIS SHEET CAN BE FOUND ON SHEET 2.
- THE ACCESS EASEMENT(S) STATED IN DOCUMENTS 2015-K068758, 2015-K068759, 2016-K31130, AND 2017-K493401 IS BLANKET IN NATURE ("...ON, OVER AND ACROSS ALL EXISTING ROADS THAT ARE LOCATED ON THE PROPERTY...") AND IS NOT GRAPHICALLY DEPICTED ON THIS SHEET.
- FUTURE PHASED FINAL TRANSFER MAPS BASED ON TENTATIVE TRANSFER MAP NO. 9837 MAY INCLUDE AND FURTHER SUBDIVIDE LOT BM WITHOUT AN AMENDMENT TO THAT TENTATIVE TRANSFER MAP OR AN ADDITIONAL TENTATIVE TRANSFER MAP.



ABBREVIATIONS:

- CCSF CITY AND COUNTY OF SAN FRANCISCO
- DIAM. DIAMETER
- DN DOCUMENT NUMBER
- FND FOUND
- FTM FINAL TRANSFER MAP
- FM FINAL MAP
- IP IRON PIPE
- LS/LS. LICENSED SURVEYOR
- NAD83 NORTH AMERICAN DATUM OF 1983
- OR ORIGINAL RECORDS
- PLS PROFESSIONAL LAND SURVEYOR
- POR PORTION OF
- (R) RADIAL BEARING
- ROS RECORD OF SURVEY
- SLT STATE LANDS TRANSFER
- SQ. FT. SQUARE FEET
- (T) TOTAL
- TIDA TREASURE ISLAND DEVELOPMENT AUTHORITY
- USC&GS UNITED STATES COAST AND GEODETIC SURVEY

LINE TYPES

- SUBDIVISION BOUNDARY LINE
- LOT LINE
- TIE LINE
- APPROXIMATE MEAN HIGH WATER LINE
- FORMER LOT LINE PER ROS 9035

LEGEND

- FOUND NAIL AND TAG STAMPED "LS. 5816" (AA MAPS 85-95)
- FOUND REBAR AND CAP "LS. 3833" (AA MAPS 85-95)
- FOUND MONUMENT AS NOTED (AA MAPS 85-95 UNLESS OTHERWISE NOTED)
- NOT A PART OF THIS SURVEY (FUTURE PHASE)

- RECORD OF SURVEY NO. 8080, FILED FOR RECORD ON APRIL 4, 2014 IN BOOK EE OF SURVEY MAPS AT PAGES 147-157, AS DN 2014J860036, SAN FRANCISCO COUNTY RECORDS
- RECORD OF SURVEY NO. 8630, FILED FOR RECORD ON MAY 29, 2015 IN BOOK FF OF SURVEY MAPS AT PAGES 62-78, AS DN 2015K068760, SAN FRANCISCO COUNTY RECORDS
- RECORD OF SURVEY NO. 8639, FILED FOR RECORD ON NOVEMBER 10, 2015 IN BOOK FF OF SURVEY MAPS AT PAGES 152-173, AS DN 2015K154702, SAN FRANCISCO COUNTY RECORDS
- FINAL MAP NO. 9228, FILED FOR RECORD ON APRIL 19, 2018 IN BOOK 134 OF CONDOMINIUM MAPS AT PAGES 7-23, AS DN 2018K602992, SAN FRANCISCO COUNTY RECORDS
- FINAL MAP NO. 9235, FILED FOR RECORD ON SEPTEMBER 13, 2018 IN BOOK 134 OF CONDOMINIUM MAPS AT PAGES 170-179, AS DN 2018K672373, SAN FRANCISCO COUNTY RECORDS
- RECORD OF SURVEY NO. 9035, FILED FOR RECORD ON MAY 14, 2019 IN BOOK HH OF SURVEY MAPS AT PAGES 120-123, AS DN 2019K766208, SAN FRANCISCO COUNTY RECORDS

FINAL TRANSFER MAP NO. 9837

TREASURE ISLAND, PID 9837 - PHASE 1

A 98 LOT SUBDIVISION, BEING A MERGER AND SUBDIVISION OF PARCELS N1.1.R1, N1.1.R2, N1.1.R4, N1.1.R3, N1.1.R5, N1.1.R6, N2.2, N3.1, N3.2, SPT1.2, SPT1.3, SPT1.4, SPT1.5, SPT1.6, SPT1.7, AND SPT1.8, AS SHOWN ON THAT RECORD OF SURVEY NO. 9035, FILED FOR RECORD ON MAY 14, 2019 IN BOOK HH OF SURVEY MAPS AT PAGES 120 THROUGH 123, TOGETHER WITH LOT 17 AND LOT 21 AS SHOWN ON THAT FINAL MAP NO. 9235, RECORDED ON SEPTEMBER 13, 2018 IN BOOK 134 OF CONDOMINIUM MAPS AT PAGES 170 THROUGH 179, OFFICIAL RECORDS OF SAN FRANCISCO COUNTY

CITY AND COUNTY OF SAN FRANCISCO STATE OF CALIFORNIA

JUNE 2019

BKFIOO + BKF ENGINEERS
YEARS
ENGINEERS . SURVEYORS . PLANNERS

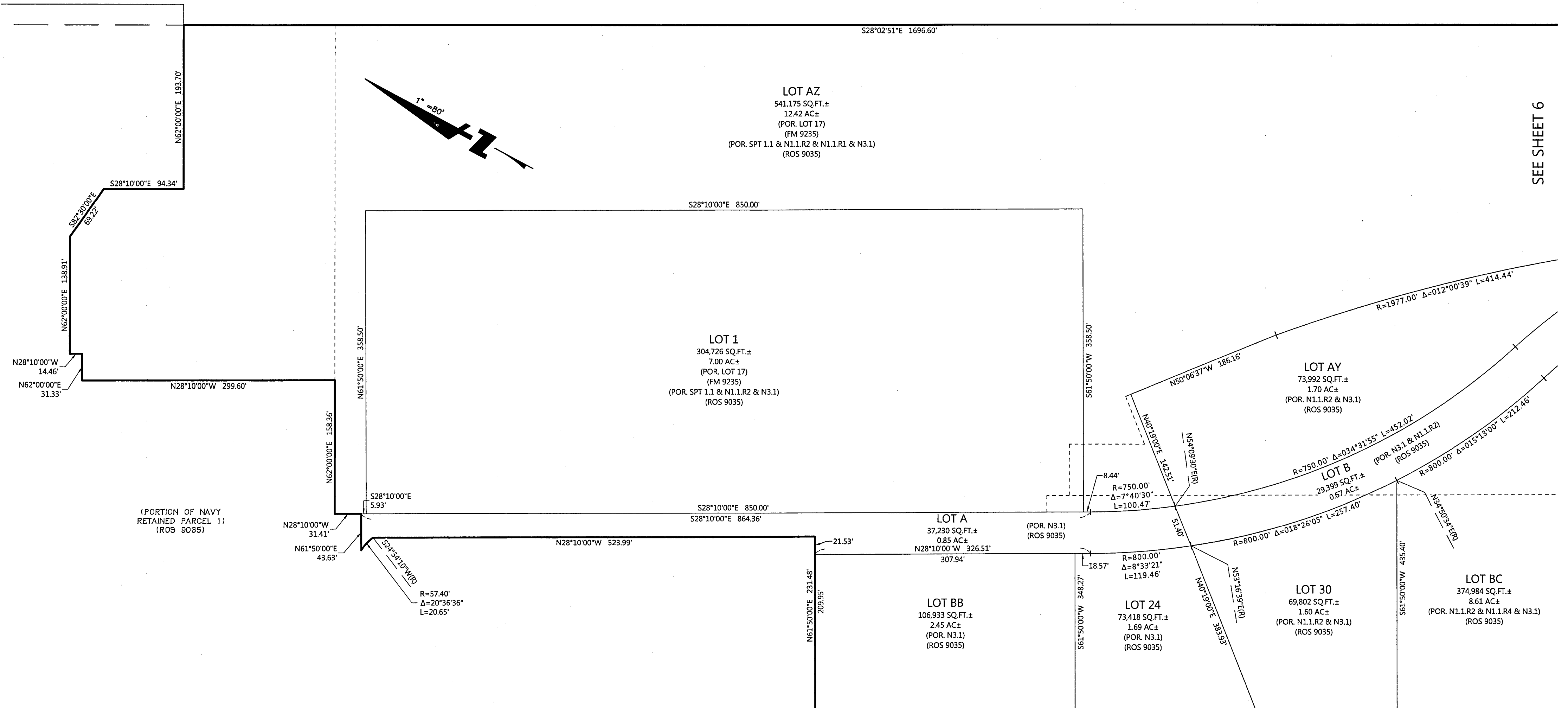
255 SHORELINE DR., SUITE 200
REDWOOD CITY, CA 94065
(650) 482-6300

(LOT 16)
(FM 9235)

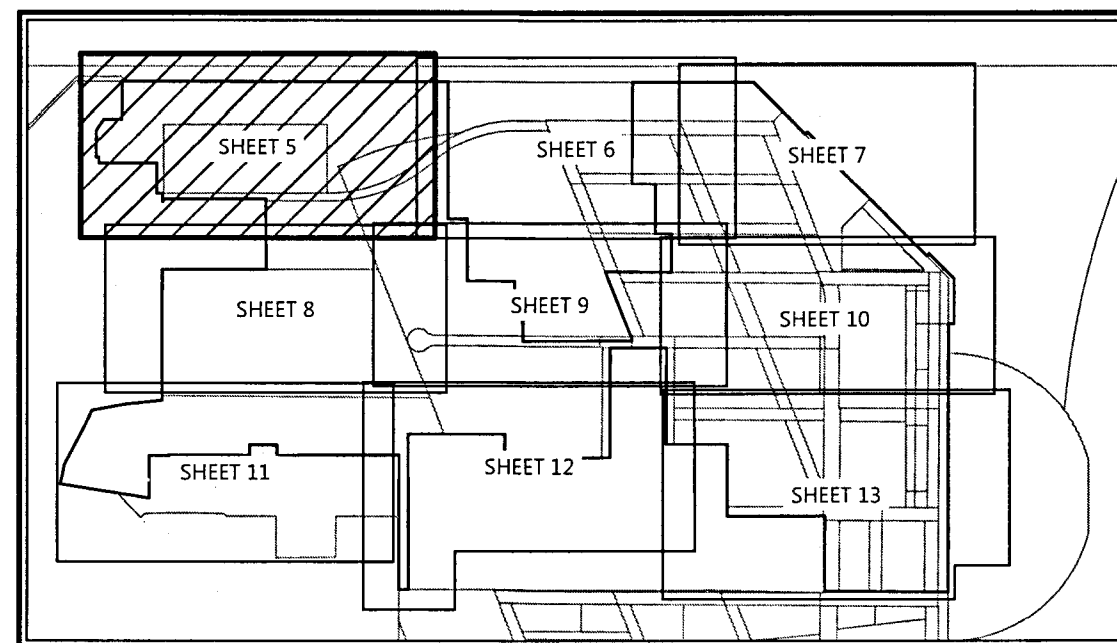
S28°02'51"E 1696.60'

LOT AZ
541,175 SQ.FT.±
12.42 AC±
(POR. LOT 17)
(FM 9235)
(POR. SPT 1.1 & N1.1.R2 & N1.1.R1 & N3.1)
(ROS 9035)

SEE SHEET 6



SEE SHEET 8



ABBREVIATIONS:

CCSF	CITY AND COUNTY OF SAN FRANCISCO
DIAM.	DIAMETER
DN	DOCUMENT NUMBER
FND	FOUND
FTM	FINAL TRANSFER MAP
FM	FINAL MAP
IP	IRON PIPE
LS/L.S.	LICENSED SURVEYOR
NAD83	NORTH AMERICAN DATUM OF 1983
O.R.	ORIGINAL RECORDS
PLS	PROFESSIONAL LAND SURVEYOR
POR.	PORTION OF
(R)	RADIAL BEARING
ROS	RECORD OF SURVEY
SLT	STATE LANDS TRANSFER
SQ. FT.	SQUARE FEET
(T)	TOTAL
TIDA	TREASURE ISLAND DEVELOPMENT AUTHORITY
USC&GS	UNITED STATES COAST AND GEODETIC SURVEY

LINE TYPES

	SUBDIVISION BOUNDARY LINE
	LOT LINE
	TIE LINE
	APPROXIMATE MEAN HIGH WATER LINE
	FORMER LOT LINE PER ROS 9035



FINAL TRANSFER MAP NO. 9837

TREASURE ISLAND, PID 9837 - PHASE 1

A 98 LOT SUBDIVISION, BEING A MERGER AND SUBDIVISION OF PARCELS N1.1.R1, N1.1.R2, N1.1.R4, N1.1.R3, N1.1.R5, N1.1.R6, N2.2, N3.1, N3.2, SPT1.2, SPT1.3, STT1.4, STT1.5, STT1.6, STT1.7, AND STT1.8, AS SHOWN ON THAT RECORD OF SURVEY NO. 9035, FILED FOR RECORD ON MAY 14, 2019 IN BOOK HH OF SURVEY MAPS AT PAGES 120 THROUGH 123, TOGETHER WITH LOT 17 AND LOT 21 AS SHOWN ON THAT FINAL MAP NO. 9235, RECORDED ON SEPTEMBER 13, 2018 IN BOOK 134 OF CONDOMINIUM MAPS AT PAGES 170 THROUGH 179, OFFICIAL RECORDS OF SAN FRANCISCO COUNTY

CITY AND COUNTY OF SAN FRANCISCO STATE OF CALIFORNIA

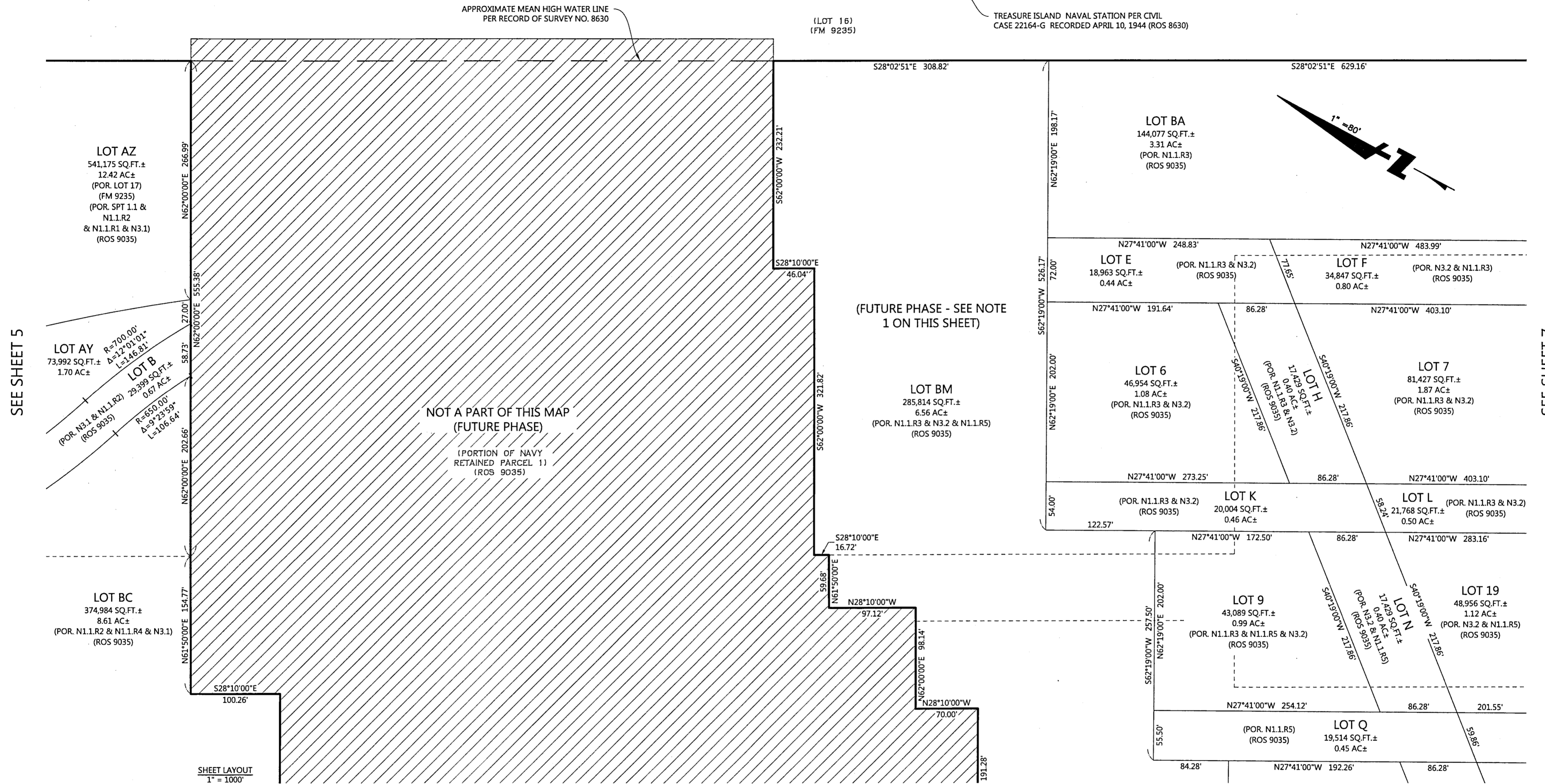
JUNE 2019

BKF100 YEARS **BKF ENGINEERS**
ENGINEERS . SURVEYORS . PLANNERS
255 SHORELINE DR., SUITE 200
REDWOOD CITY, CA 94065
(650) 482-6300

SHEET 5 OF 13

SURVEYOR'S NOTES:

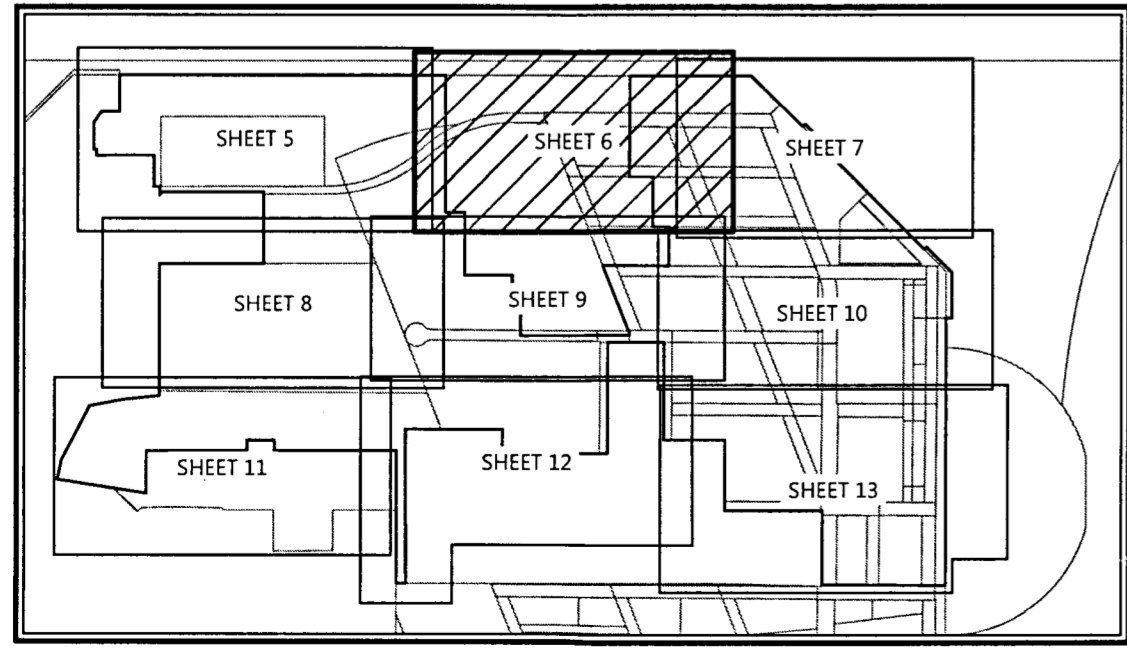
- FUTURE PHASED FINAL TRANSFER MAPS BASED ON TENTATIVE TRANSFER MAP NO. 9837 MAY INCLUDE AND FURTHER SUBDIVIDE LOT BM WITHOUT AN AMENDMENT TO THAT TENTATIVE TRANSFER MAP OR AN ADDITIONAL TENTATIVE TRANSFER MAP.



SEE SHEET 5

SEE SHEET 7

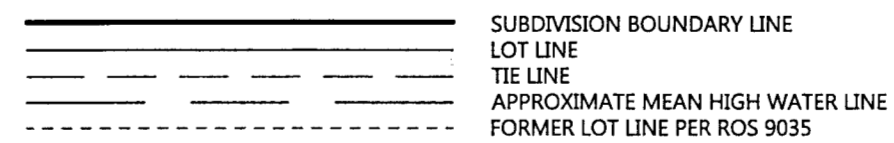
SEE SHEET 9



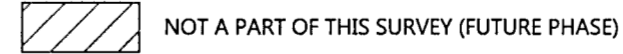
ABBREVIATIONS:

CCSF	CITY AND COUNTY OF SAN FRANCISCO
DIAM.	DIAMETER
DN	DOCUMENT NUMBER
FND	FOUND
FTM	FINAL TRANSFER MAP
FM	FINAL MAP
IP	IRON PIPE
LS/L.S.	LICENSED SURVEYOR
NAD83	NORTH AMERICAN DATUM OF 1983
O.R.	ORIGINAL RECORDS
PLS	PROFESSIONAL LAND SURVEYOR
POR.	PORTION OF
(R)	RADIAL BEARING
ROS	RECORD OF SURVEY
SLT	STATE LANDS TRANSFER
SQ. FT.	SQUARE FEET
(T)	TOTAL
TIDA	TREASURE ISLAND DEVELOPMENT AUTHORITY
USC&GS	UNITED STATES COAST AND GEODETIC SURVEY

LINE TYPES



LEGEND



GRAPHIC SCALE



FINAL TRANSFER MAP NO. 9837

TREASURE ISLAND, PID 9837 - PHASE 1

A 98 LOT SUBDIVISION, BEING A MERGER AND SUBDIVISION OF PARCELS N1.1.R1, N1.1.R2, N1.1.R4, N1.1.R3, N1.1.R5, N1.1.R6, N2.2, N3.1, N3.2, SPT1.2, SPT1.3, STT1.4, STT1.5, STT1.6, STT1.7, AND STT1.8, AS SHOWN ON THAT RECORD OF SURVEY NO. 9035, FILED FOR RECORD ON MAY 14, 2019 IN BOOK HH OF SURVEY MAPS AT PAGES 120 THROUGH 123, TOGETHER WITH LOT 17 AND LOT 21 AS SHOWN ON THAT FINAL MAP NO. 9235, RECORDED ON SEPTEMBER 13, 2018 IN BOOK 134 OF CONDOMINIUM MAPS AT PAGES 170 THROUGH 179, OFFICIAL RECORDS OF SAN FRANCISCO COUNTY

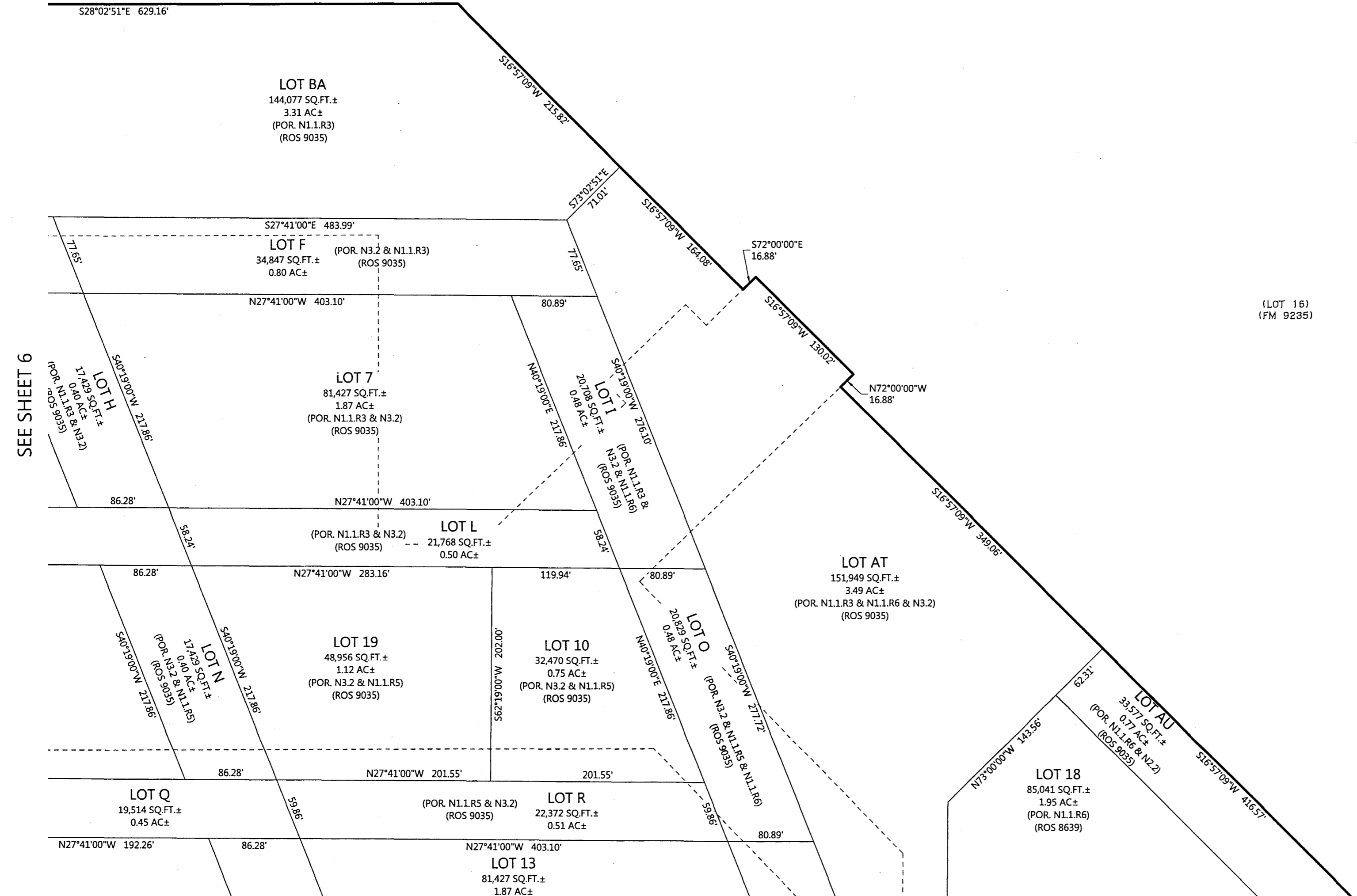
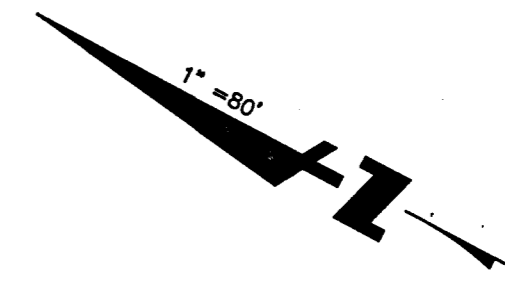
CITY AND COUNTY OF SAN FRANCISCO STATE OF CALIFORNIA

JUNE 2019

BKF 100+ YEARS BKF ENGINEERS
 255 SHORELINE DR., SUITE 200
 REDWOOD CITY, CA 94065
 (650) 482-6300

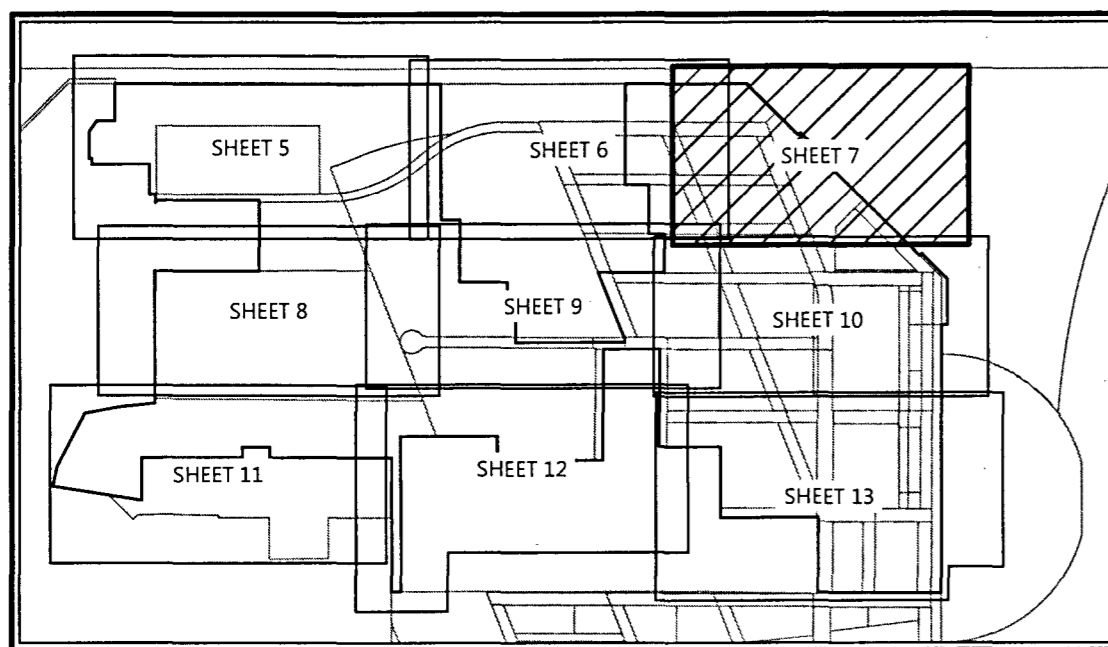
SHEET 6 OF 13

TREASURE ISLAND NAVAL STATION PER CIVIL
CASE 22164-G RECORDED APRIL 10, 1944 (ROS 8630)



SEE SHEET 6

SEE SHEET 10



SHEET LAYOUT
1" = 1000'

ABBREVIATIONS:

CCSF	CITY AND COUNTY OF SAN FRANCISCO
DIAM.	DIAMETER
DN	DOCUMENT NUMBER
FND	FOUND
FTM	FINAL TRANSFER MAP
FM	FINAL MAP
IP	IRON PIPE
LS/L.S.	LICENSED SURVEYOR
NAD83	NORTH AMERICAN DATUM OF 1983
O.R.	ORIGINAL RECORDS
PLS	PROFESSIONAL LAND SURVEYOR
POR	PORTION OF
(R)	RADIAL BEARING
ROS	RECORD OF SURVEY
SLT	STATE LANDS TRANSFER
SQ. FT.	SQUARE FEET
(T)	TOTAL
TIDA	TREASURE ISLAND DEVELOPMENT AUTHORITY
USC&GS	UNITED STATES COAST AND GEODETIC SURVEY

LINE TYPES

	SUBDIVISION BOUNDARY LINE
	LOT LINE
	TIE LINE
	APPROXIMATE MEAN HIGH WATER LINE
	FORMER LOT LINE PER ROS 9035



FINAL TRANSFER MAP NO. 9837

TREASURE ISLAND, PID 9837 - PHASE 1

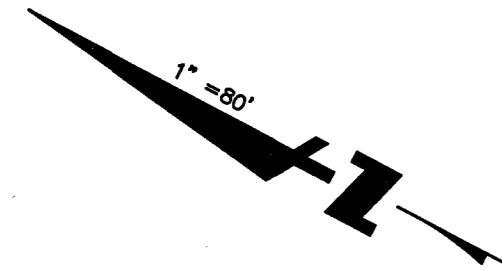
A 98 LOT SUBDIVISION, BEING A MERGER AND SUBDIVISION OF PARCELS N1.1.R1, N1.1.R2, N1.1.R4, N1.1.R3, N1.1.R5, N1.1.R6, N2.2, N3.1, N3.2, SPT1.2, SPT1.3, STT1.4, STT1.5, STT1.6, STT1.7, AND STT1.8, AS SHOWN ON THAT RECORD OF SURVEY NO. 9035, FILED FOR RECORD ON MAY 14, 2019 IN BOOK HH OF SURVEY MAPS AT PAGES 120 THROUGH 123, TOGETHER WITH LOT 17 AND LOT 21 AS SHOWN ON THAT FINAL MAP NO. 9235, RECORDED ON SEPTEMBER 13, 2018 IN BOOK 134 OF CONDOMINIUM MAPS AT PAGES 170 THROUGH 179, OFFICIAL RECORDS OF SAN FRANCISCO COUNTY

CITY AND COUNTY OF SAN FRANCISCO STATE OF CALIFORNIA

JUNE 2019

BKF 100+ YEARS BKF ENGINEERS
255 SHORELINE DR., SUITE 200
REDWOOD CITY, CA 94065
(650) 482-6300
ENGINEERS . SURVEYORS . PLANNERS

SHEET 7 OF 13



SEE SHEET 5

(PORTION OF NAVY
RETAINED PARCEL 1)
(ROS 9035)

N62°00'00"E 686.63'
663.19'

S28°10'00"E 542.33'

N04°46'26"W
1.85'
N61°50'00"E 137.58'

LOT BB
106,933 SQ.FT.±
2.45 AC±
(POR. N3.1)
(ROS 9035)

LOT 24
73,418 SQ.FT.±
1.69 AC±
(POR. N3.1)
(ROS 9035)

LOT 30
69,802 SQ.FT.±
1.60 AC±
(POR. N1.1.R2 & N3.1)
(ROS 9035)

S61°50'00"W 348.27'

N01°10'00"E 383.53'

S61°50'00"W 435.40'

306.24'
S28°10'00"E

278.40'

103.24'

LOT BC
374,984 SQ.FT.±
8.61 AC±
(POR. N1.1.R2 & N1.1.R4 & N3.1)
(ROS 9035)

LOT BD
842,921 SQ.FT.±
19.35 AC±
(ALL OF SPT1.2 & POR. N1.1.R4)
(ROS 9035)

R=60.00'
Δ=115°31'52"
L=162.87'

R=60.00'
Δ=43°31'52"
L=45.59'

LOT U
48,939 SQ.FT.±
1.12 AC±
(POR. N1.1.R4)
(ROS 9035)

R=60.00'
Δ=111°31'52"
L=116.80'

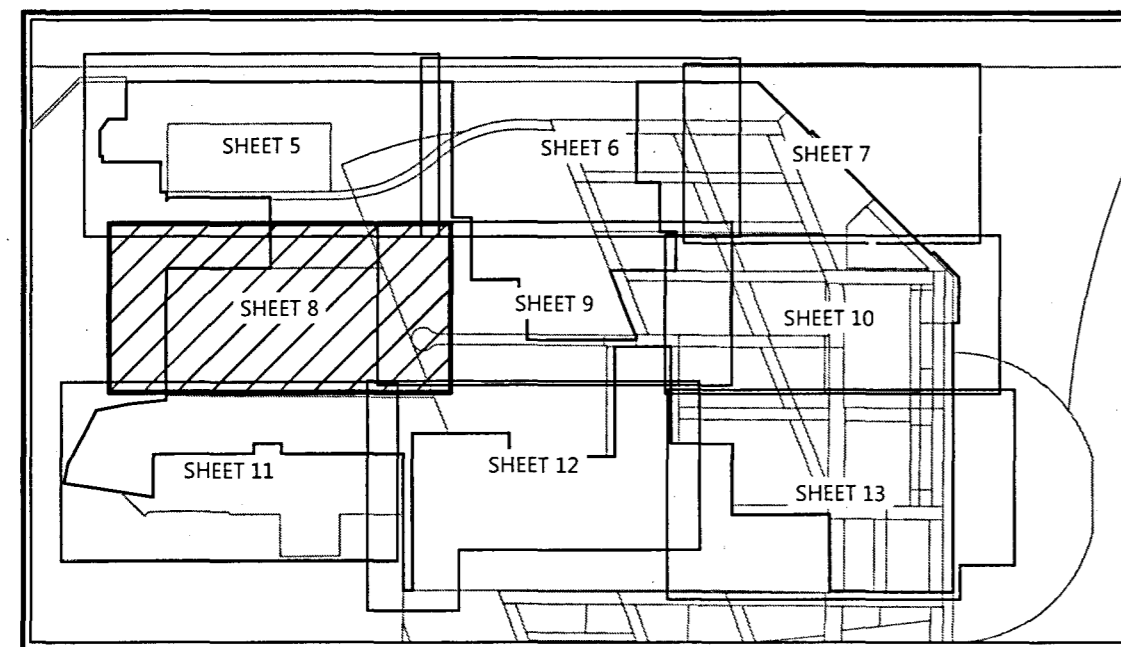
R=60.00'
Δ=43°31'52"
L=45.59'

LOT BE
482,200 SQ.FT.±
11.07 AC±
(POR. N1.1.R4)
(ROS 9035)

S49°41'00"E(R)
S40°19'00"W 422.18'
S40°19'00"W 303.33'

SEE SHEET 9

SEE SHEET 11



SHEET LAYOUT
1" = 1000'

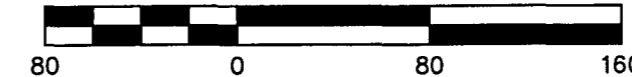
ABBREVIATIONS:

CCSF	CITY AND COUNTY OF SAN FRANCISCO
DIAM.	DIAMETER
DN	DOCUMENT NUMBER
FND	FOUND
FTM	FINAL TRANSFER MAP
FM	FINAL MAP
IP	IRON PIPE
LS/L.S.	LICENSED SURVEYOR
NAD83	NORTH AMERICAN DATUM OF 1983
O.R.	ORIGINAL RECORDS
PLS	PROFESSIONAL LAND SURVEYOR
POR.	PORTION OF
(R)	RADIAL BEARING
ROS	RECORD OF SURVEY
SLT	STATE LANDS TRANSFER
SQ. FT.	SQUARE FEET
(T)	TOTAL
TIDA	TREASURE ISLAND DEVELOPMENT AUTHORITY
USC&GS	UNITED STATES COAST AND GEODETIC SURVEY

LINE TYPES

	SUBDIVISION BOUNDARY LINE
	LOT LINE
	TIE LINE
	APPROXIMATE MEAN HIGH WATER LINE
	FORMER LOT LINE PER ROS 9035

GRAPHIC SCALE



FINAL TRANSFER MAP NO. 9837

TREASURE ISLAND, PID 9837 - PHASE 1

A 98 LOT SUBDIVISION, BEING A MERGER AND SUBDIVISION OF PARCELS N1.1.R1, N1.1.R2, N1.1.R4, N1.1.R3, N1.1.R5, N1.1.R6, N2.2, N3.1, N3.2, SPT1.2, SPT1.3, STT1.4, STT1.5, STT1.6, STT1.7, AND STT1.8, AS SHOWN ON THAT RECORD OF SURVEY NO. 9035, FILED FOR RECORD ON MAY 14, 2019 IN BOOK HH OF SURVEY MAPS AT PAGES 120 THROUGH 123, TOGETHER WITH LOT 17 AND LOT 21 AS SHOWN ON THAT FINAL MAP NO. 9235, RECORDED ON SEPTEMBER 13, 2018 IN BOOK 134 OF CONDOMINIUM MAPS AT PAGES 170 THROUGH 179, OFFICIAL RECORDS OF SAN FRANCISCO COUNTY

CITY AND COUNTY OF SAN FRANCISCO STATE OF CALIFORNIA

JUNE 2019

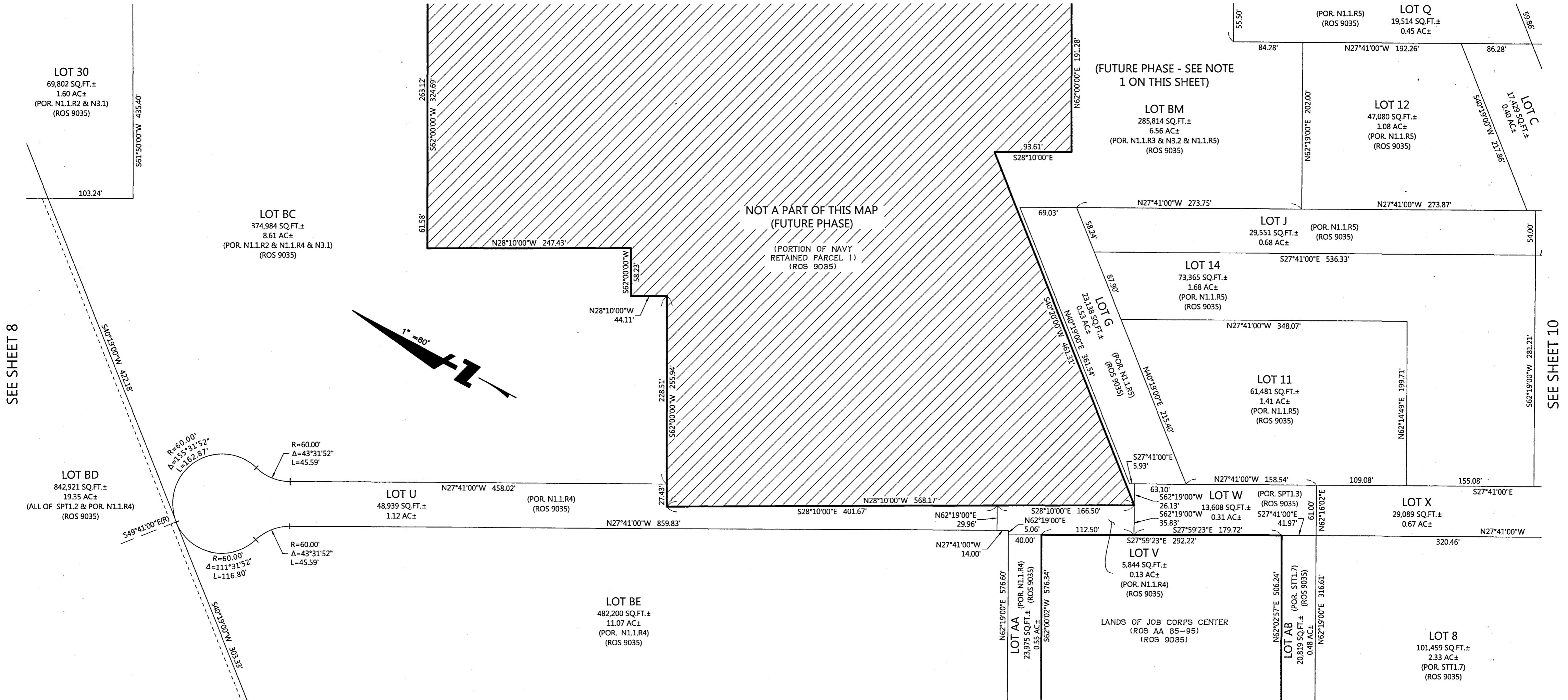
BKF 100 YEARS BKF ENGINEERS
255 SHORELINE DR., SUITE 200
REDWOOD CITY, CA 94065
ENGINEERS . SURVEYORS . PLANNERS (650) 482-6300

SHEET 8 OF 13

SURVEYOR'S NOTES:

- FUTURE PHASED FINAL TRANSFER MAPS BASED ON TENTATIVE TRANSFER MAP NO. 9837 MAY INCLUDE AND FURTHER SUBDIVIDE LOT BM WITHOUT AN AMENDMENT TO THAT TENTATIVE TRANSFER MAP OR AN ADDITIONAL TENTATIVE TRANSFER MAP.

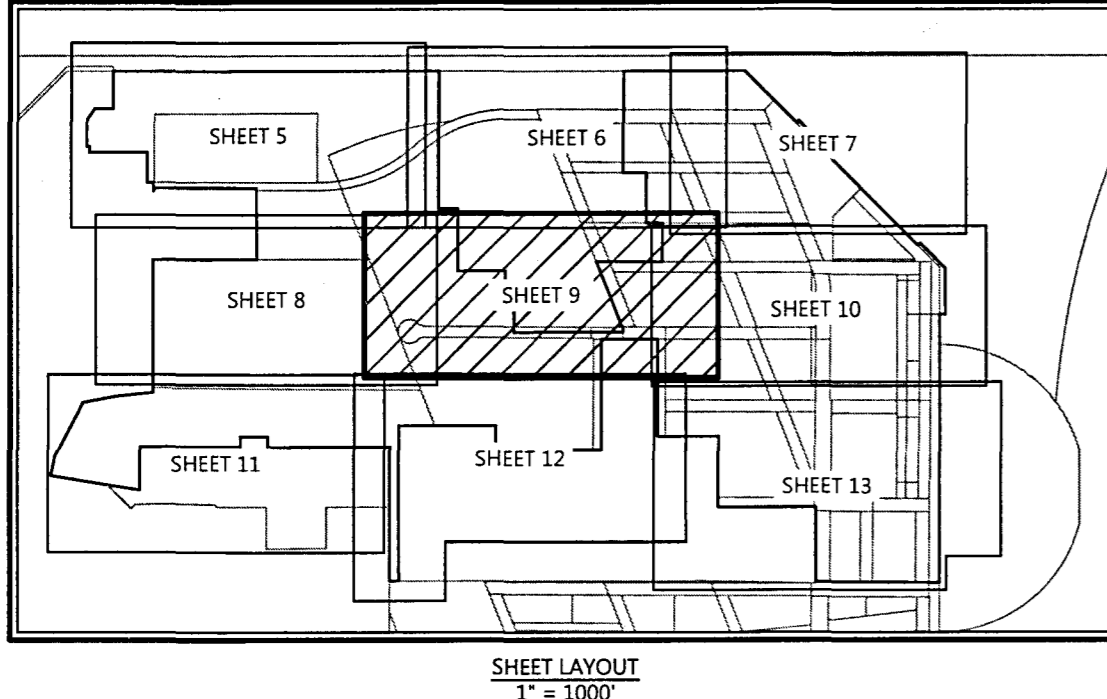
SEE SHEET 6



SEE SHEET 8

SEE SHEET 10

SEE SHEET 12



SHEET LAYOUT
1" = 1000'

ABBREVIATIONS:

CCSF	CITY AND COUNTY OF SAN FRANCISCO
DIAM.	DIAMETER
DN	DOCUMENT NUMBER
FND	FOUND
FTM	FINAL TRANSFER MAP
FM	FINAL MAP
IP	IRON PIPE
LS/L.S.	LICENSED SURVEYOR
NAD83	NORTH AMERICAN DATUM OF 1983
O.R.	ORIGINAL RECORDS
PLS	PROFESSIONAL LAND SURVEYOR
POR.	PORTION OF
(R)	RADIAL BEARING
ROS	RECORD OF SURVEY
SLT	STATE LANDS TRANSFER
SQ. FT.	SQUARE FEET
(T)	TOTAL
TIDA	TREASURE ISLAND DEVELOPMENT AUTHORITY
USC&GS	UNITED STATES COAST AND GEODETIC SURVEY

LINE TYPES

	SUBDIVISION BOUNDARY LINE
	LOT LINE
	TIE LINE
	APPROXIMATE MEAN HIGH WATER LINE
	FORMER LOT LINE PER ROS 9035

LEGEND

	NOT A PART OF THIS SURVEY (FUTURE PHASE)
--	--



FINAL TRANSFER MAP NO. 9837

TREASURE ISLAND, PID 9837 - PHASE 1

A 98 LOT SUBDIVISION, BEING A MERGER AND SUBDIVISION OF PARCELS N1.1.R1, N1.1.R2, N1.1.R4, N1.1.R3, N1.1.R5, N1.1.R6, N2.2, N3.1, N3.2, SPT1.2, SPT1.3, SPT1.4, SPT1.5, SPT1.6, SPT1.7, AND SPT1.8, AS SHOWN ON THAT RECORD OF SURVEY NO. 9035, FILED FOR RECORD ON MAY 14, 2019 IN BOOK HH OF SURVEY MAPS AT PAGES 120 THROUGH 123, TOGETHER WITH LOT 17 AND LOT 21 AS SHOWN ON THAT FINAL MAP NO. 9235, RECORDED ON SEPTEMBER 13, 2018 IN BOOK 134 OF CONDOMINIUM MAPS AT PAGES 170 THROUGH 179, OFFICIAL RECORDS OF SAN FRANCISCO COUNTY

CITY AND COUNTY OF SAN FRANCISCO STATE OF CALIFORNIA

JUNE 2019

BKF100+ BKF ENGINEERS
 255 SHORELINE DR., SUITE 200
 REDWOOD CITY, CA 94065
 (650) 482-6300
 ENGINEERS . SURVEYORS . PLANNERS

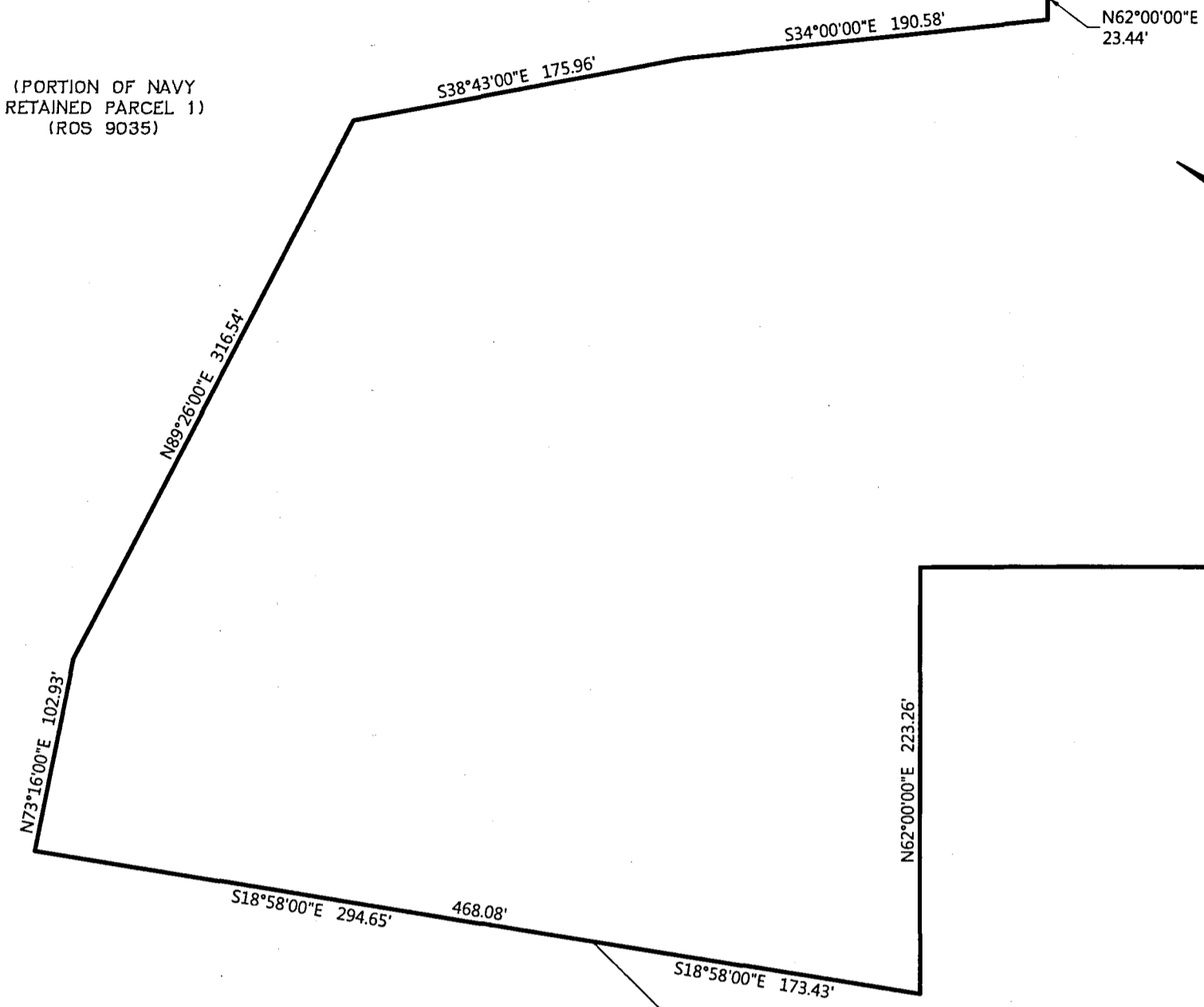
SHEET 9 OF 13

SEE SHEET 8

LOT BD
842,921 SQ.FT.±
19.35 AC±
(ALL OF SPT1.2 & POR. N1.1.R4)
(ROS 9035) S27°41'00"E 1395.06'

LOT AW
634,318 SQ.FT.±
14.56 AC±
(POR. N1.1.R4)
(ROS 9035)
(ALL OF DN 2018-K2672427)

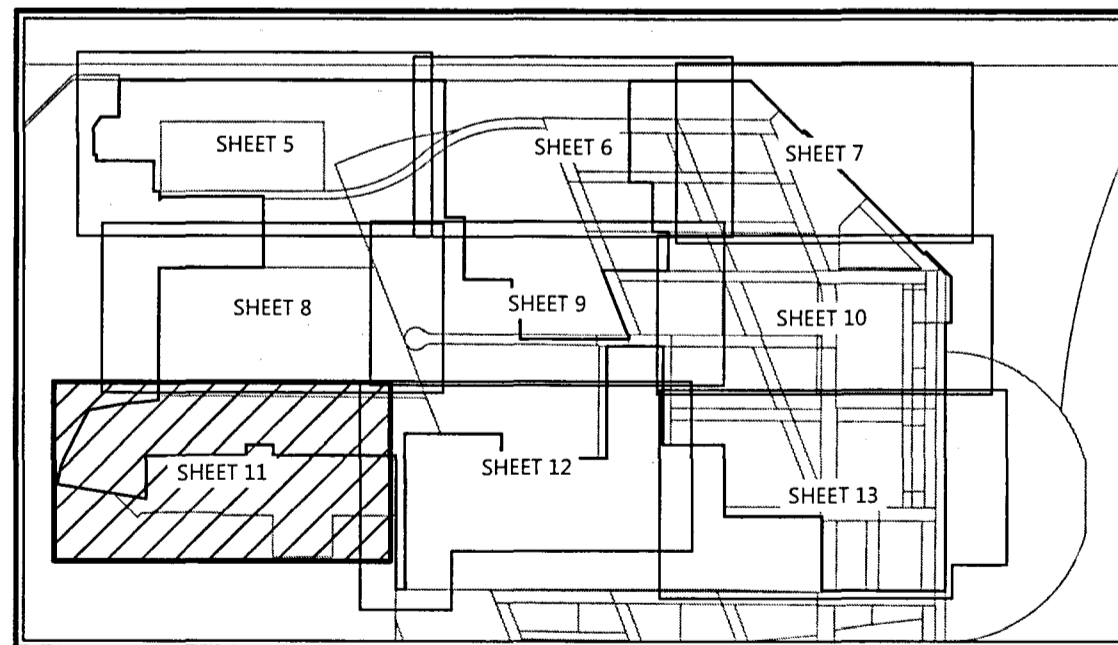
(PORTION OF NAVY
RETAINED PARCEL 1)
(ROS 9035)



SEE SHEET 12

(PARCEL N4.1)
(ROS 9035)

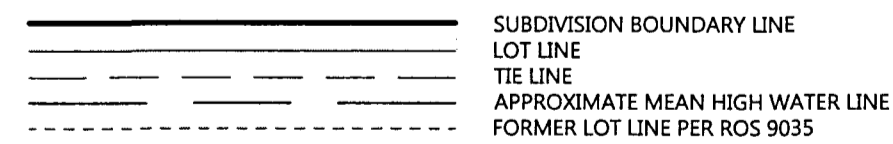
(PORTION OF NAVY
RETAINED PARCEL 1)
(ROS 9035)



ABBREVIATIONS:

CCSF	CITY AND COUNTY OF SAN FRANCISCO
DIAM.	DIAMETER
DN	DOCUMENT NUMBER
FND	FOUND
FTM	FINAL TRANSFER MAP
FM	FINAL MAP
IP	IRON PIPE
LS/L.S.	LICENSED SURVEYOR
NAD83	NORTH AMERICAN DATUM OF 1983
O.R.	ORIGINAL RECORDS
PLS	PROFESSIONAL LAND SURVEYOR
POR.	PORTION OF
(R)	RADIAL BEARING
ROS	RECORD OF SURVEY
SLT	STATE LANDS TRANSFER
SQ. FT.	SQUARE FEET
(T)	TOTAL
TIDA	TREASURE ISLAND DEVELOPMENT AUTHORITY
USC&GS	UNITED STATES COAST AND GEODETIC SURVEY

LINE TYPES



GRAPHIC SCALE



FINAL TRANSFER MAP NO. 9837

TREASURE ISLAND, PID 9837 - PHASE 1

A 98 LOT SUBDIVISION, BEING A MERGER AND SUBDIVISION OF PARCELS N1.1.R1, N1.1.R2, N1.1.R4, N1.1.R3, N1.1.R5, N1.1.R6, N2.2, N3.1, N3.2, SPT1.2, SPT1.3, SPT1.4, SPT1.5, SPT1.6, SPT1.7, AND SPT1.8, AS SHOWN ON THAT RECORD OF SURVEY NO. 9035, FILED FOR RECORD ON MAY 14, 2019 IN BOOK HH OF SURVEY MAPS AT PAGES 120 THROUGH 123, TOGETHER WITH LOT 17 AND LOT 21 AS SHOWN ON THAT FINAL MAP NO. 9235, RECORDED ON SEPTEMBER 13, 2018 IN BOOK 134 OF CONDOMINIUM MAPS AT PAGES 170 THROUGH 179, OFFICIAL RECORDS OF SAN FRANCISCO COUNTY

CITY AND COUNTY OF SAN FRANCISCO STATE OF CALIFORNIA

JUNE 2019

BKF 100+ BKF ENGINEERS
YEARS
255 SHORELINE DR., SUITE 200
REDWOOD CITY, CA 94065
(650) 482-6300

SHEET 11 OF 13

SEE SHEET 9

LOT AW
634,318 SQ.FT.±
14.56 AC±
(POR. N1.1.R4)
(ROS 9035)
(ALL OF DN 2018-K2672427)

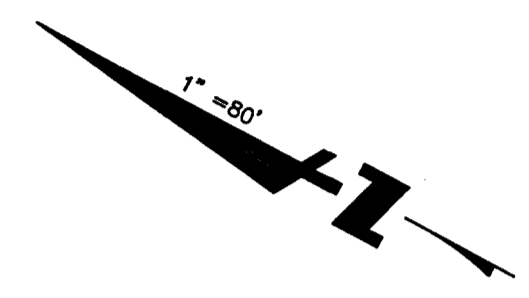
LOT BE
482,200 SQ.FT.±
11.07 AC±
(POR. N1.1.R4)
(ROS 9035)

LOT AA
23,975 SQ.FT.±
0.55 AC±
(POR. N1.1.R4)
(ROS 9035)

LOT 8
101,459 SQ.FT.±
2.33 AC±
(POR. STT1.7)
(ROS 9035)

LOT AE
38,340 SQ.FT.±
0.88 AC±
(POR. STT1.7)
(ROS 9035)

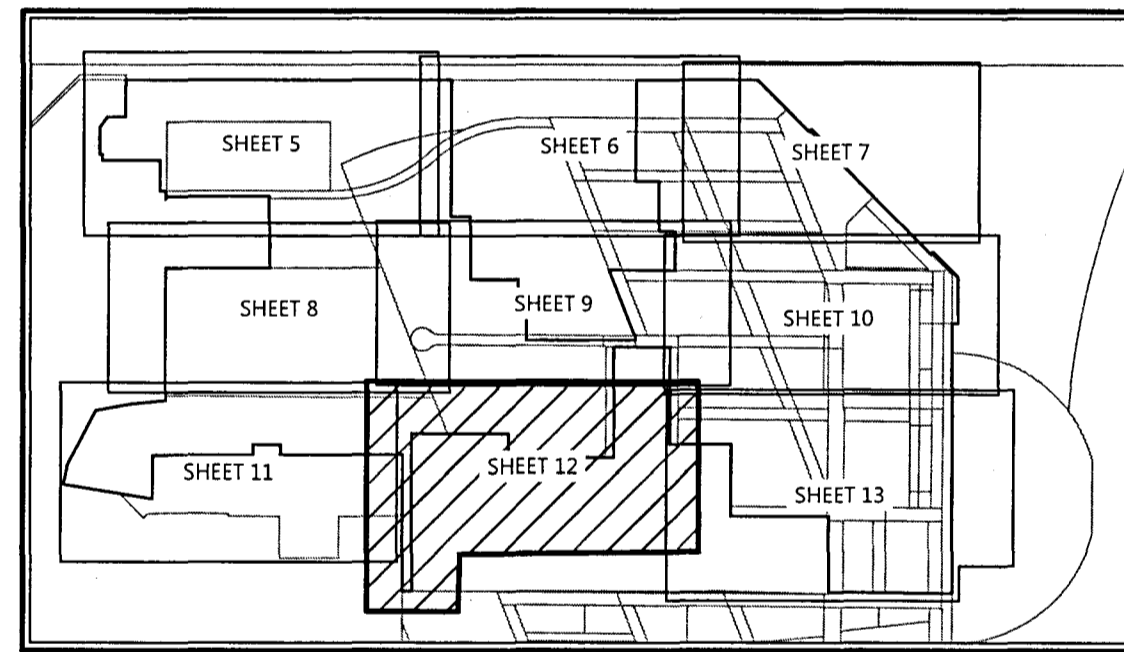
LOT 5
35,523 SQ.FT.±
0.82 AC±
(POR. STT1.7)
(ROS 9035)



SEE SHEET 11

SEE SHEET 13

(PARCEL N4.1)
(ROS 9035)



SHEET LAYOUT
1" = 1000'

LANDS OF JOB CORPS CENTER
(ROS AA 85-95)
(ROS 9035)

ABBREVIATIONS:

CCSF	CITY AND COUNTY OF SAN FRANCISCO
DIAM.	DIAMETER
DN	DOCUMENT NUMBER
FND	FOUND
FTM	FINAL TRANSFER MAP
FM	FINAL MAP
IP	IRON PIPE
LS/L.S.	LICENSED SURVEYOR
NAD83	NORTH AMERICAN DATUM OF 1983
O.R.	ORIGINAL RECORDS
PLS	PROFESSIONAL LAND SURVEYOR
POR.	PORTION OF
(R)	RADIAL BEARING
ROS	RECORD OF SURVEY
SLT	STATE LANDS TRANSFER
SQ. FT.	SQUARE FEET
(T)	TOTAL
TIDA	TREASURE ISLAND DEVELOPMENT AUTHORITY
USC&GS	UNITED STATES COAST AND GEODETIC SURVEY

LINE TYPES

	SUBDIVISION BOUNDARY LINE
	LOT LINE
	TIE LINE
	APPROXIMATE MEAN HIGH WATER LINE
	FORMER LOT LINE PER ROS 9035

GRAPHIC SCALE



FINAL TRANSFER MAP NO. 9837

TREASURE ISLAND, PID 9837 - PHASE 1

A 98 LOT SUBDIVISION, BEING A MERGER AND SUBDIVISION OF PARCELS N1.1.R1, N1.1.R2, N1.1.R4, N1.1.R3, N1.1.R5, N1.1.R6, N2.2, N3.1, N3.2, SPT1.2, SPT1.3, STT1.4, STT1.5, STT1.6, STT1.7, AND STT1.8, AS SHOWN ON THAT RECORD OF SURVEY NO. 9035, FILED FOR RECORD ON MAY 14, 2019 IN BOOK HH OF SURVEY MAPS AT PAGES 120 THROUGH 123, TOGETHER WITH LOT 17 AND LOT 21 AS SHOWN ON THAT FINAL MAP NO. 9235, RECORDED ON SEPTEMBER 13, 2018 IN BOOK 134 OF CONDOMINIUM MAPS AT PAGES 170 THROUGH 179, OFFICIAL RECORDS OF SAN FRANCISCO COUNTY

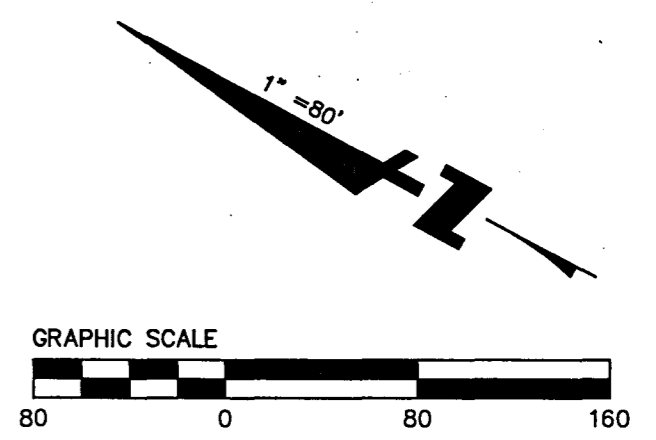
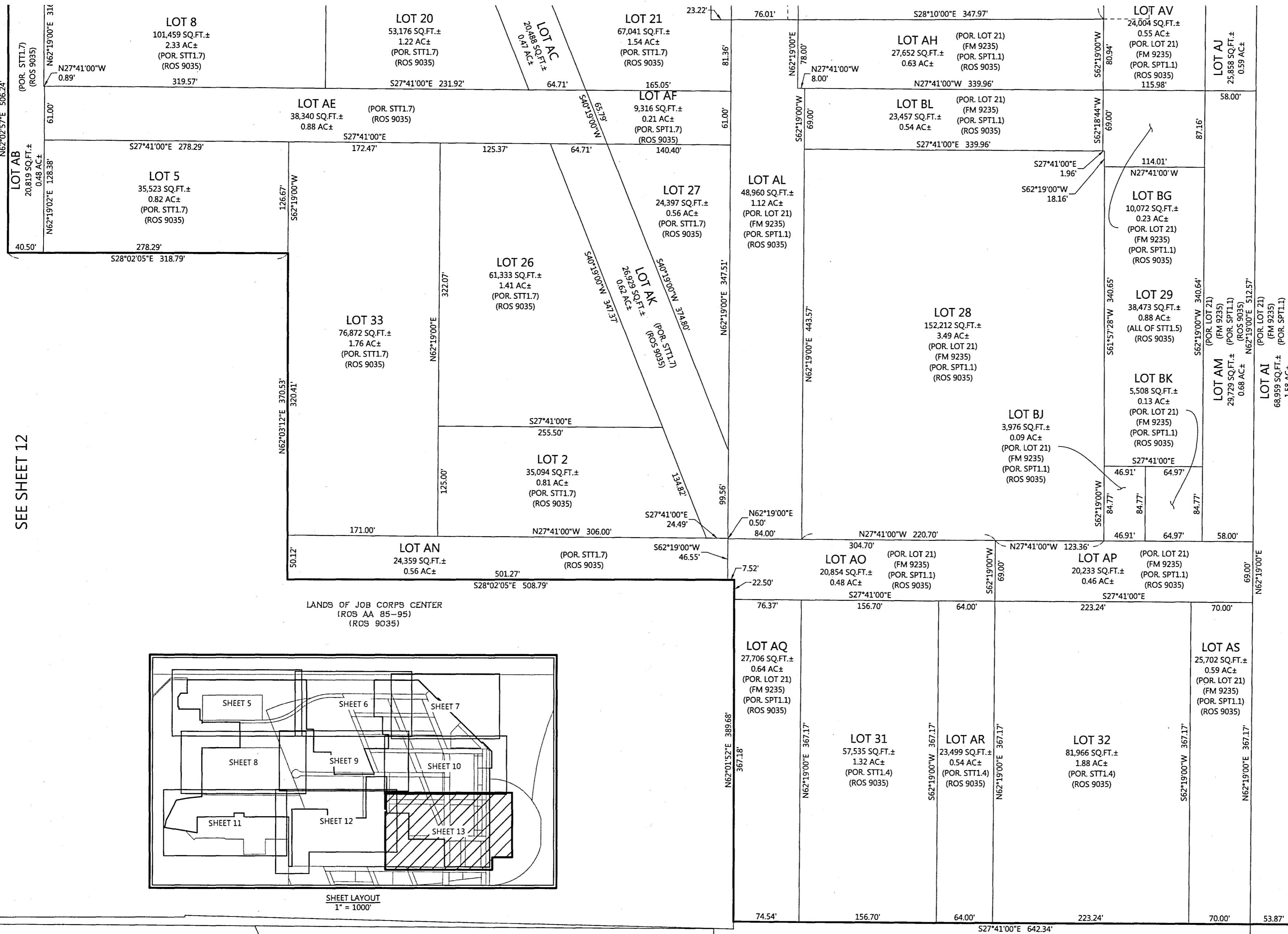
CITY AND COUNTY OF SAN FRANCISCO STATE OF CALIFORNIA

JUNE 2019

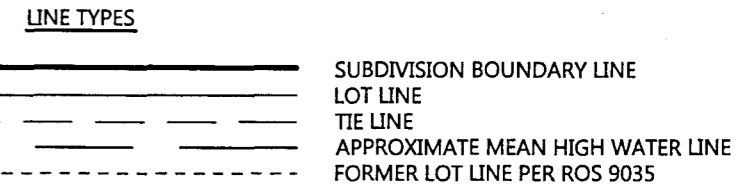
BKF 100+ BKF ENGINEERS
 YEARS
 ENGINEERS . SURVEYORS . PLANNERS
 255 SHORELINE DR., SUITE 200
 REDWOOD CITY, CA 94065
 (650) 482-6300

SHEET 12 OF 13

SEE SHEET 10



(PARCEL N2.1)
(ROS 9035)



ABBREVIATIONS:

CCSF	CITY AND COUNTY OF SAN FRANCISCO
DIAM.	DIAMETER
DN	DOCUMENT NUMBER
FND	FOUND
FTM	FINAL TRANSFER MAP
FM	FINAL MAP
IP	IRON PIPE
LS/L.S.	LICENSED SURVEYOR
NAD83	NORTH AMERICAN DATUM OF 1983
O.R.	ORIGINAL RECORDS
PLS	PROFESSIONAL LAND SURVEYOR
POR.	PORTION OF
(R)	RADIAL BEARING
ROS	RECORD OF SURVEY
SLT	STATE LANDS TRANSFER
SQ. FT.	SQUARE FEET
(T)	TOTAL
TIDA	TREASURE ISLAND DEVELOPMENT AUTHORITY
USC&GS	UNITED STATES COAST AND GEODETIC SURVEY

FINAL TRANSFER MAP NO. 9837

TREASURE ISLAND, PID 9837 - PHASE 1

A 98 LOT SUBDIVISION, BEING A MERGER AND SUBDIVISION OF PARCELS N1.1.R1, N1.1.R2, N1.1.R4, N1.1.R3, N1.1.R5, N1.1.R6, N2.2, N3.1, N3.2, SPT1.2, SPT1.3, SPT1.4, SPT1.5, SPT1.6, SPT1.7, AND SPT1.8, AS SHOWN ON THAT RECORD OF SURVEY NO. 9035, FILED FOR RECORD ON MAY 14, 2019 IN BOOK HH OF SURVEY MAPS AT PAGES 120 THROUGH 123, TOGETHER WITH LOT 17 AND LOT 21 AS SHOWN ON THAT FINAL MAP NO. 9235, RECORDED ON SEPTEMBER 13, 2018 IN BOOK 134 OF CONDOMINIUM MAPS AT PAGES 170 THROUGH 179, OFFICIAL RECORDS OF SAN FRANCISCO COUNTY

CITY AND COUNTY OF SAN FRANCISCO STATE OF CALIFORNIA

JUNE 2019

BKF100 + BKF ENGINEERS
 YEARS
 ENGINEERS . SURVEYORS . PLANNERS
 255 SHORELINE DR., SUITE 200
 REDWOOD CITY, CA 94065
 (650) 482-6300

SHEET 13 OF 13