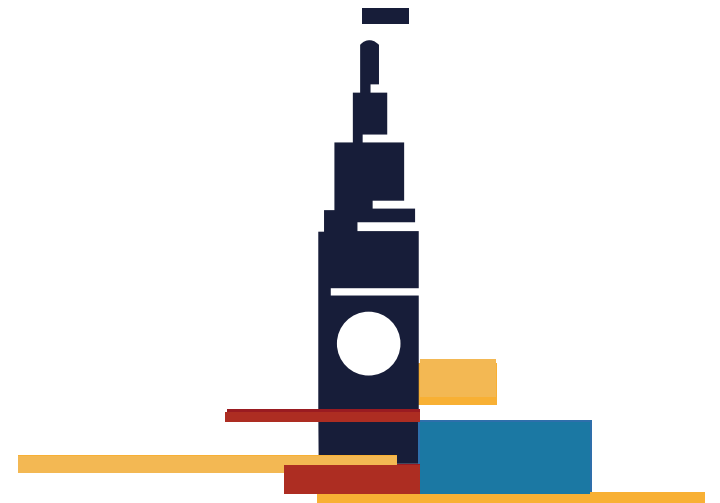


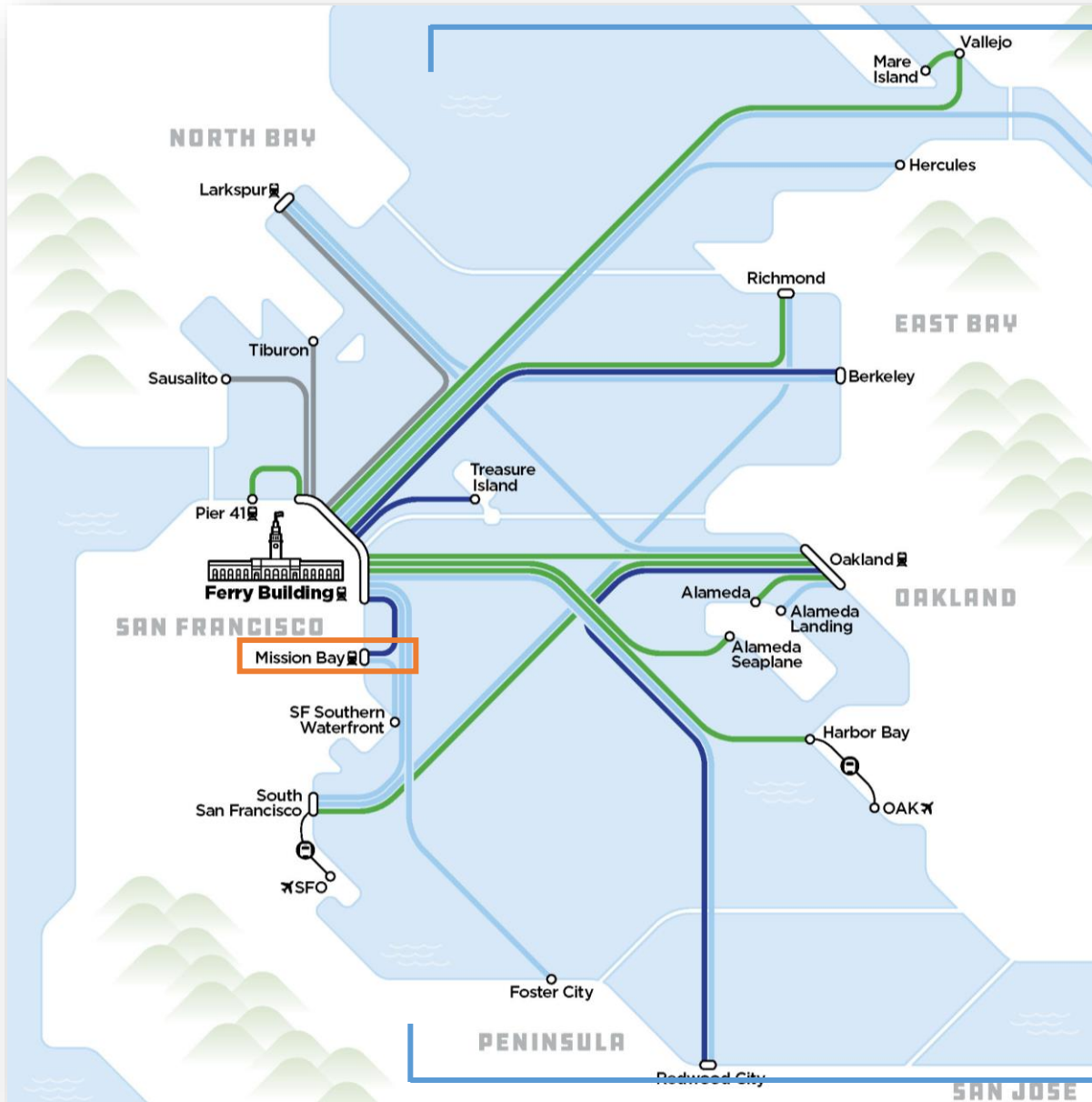
MISSION BAY FERRY LANDING PROJECT

Resolution to Accept & Expend a \$28 Million San Francisco Bay Ferry Grant

July 9, 2025

Presented By: Meghan Wallace, Port of San Francisco





Background

- The Mission Bay Ferry Landing is located at the intersection of Terry A. Francois Boulevard and 16th Street.
- Project identified in the Port of San Francisco's Waterfront Plan.
- Project identified in Plan Bay Area 2050 (MTC and ABAG).
- Also identified in San Francisco Bay Ferry's 2050 Service Vision as a Tier I expansion project.
- The Port and SF Bay Ferry are partnering to deliver the ferry landing by Summer 2027.

Strategic Objectives

Equity: Multimodal transportation options reduce barriers to neighborhood access and provides regional connectivity.

Sustainability: Zero emission transportation options reduce neighborhood and region dependence on private vehicle use and reduce air emissions.

Evolution: Ferry service will attract and retain tenants that help build an economically viable Port.



Project Funding

	Approved		Request	Future		TOTAL
	City Funds	EPA	SF Bay Ferry	UCSF	SF Sales Tax	
Soft Costs	\$6.5	\$2.8	\$ -	\$4.0	\$0.8	\$14.1
Construction	\$10.2	\$15.6	\$28.0	\$ -	\$3.4	\$57.2
Emergency Firefighting Water System	\$1.1	\$ -	\$ -	\$ -	\$ -	\$1.1
<u>Agua Vista Park Improvements</u>	<u>\$2.0</u>	<u>\$ -</u>	<u>\$ -</u>	<u>\$ -</u>	<u>\$ -</u>	<u>\$2.0</u>
Total	\$19.8	\$18.4	\$28.0	\$4.0	\$4.2	\$74.4

- The SF Bay Ferry grant is a critical component of a complex funding plan and is comprised primarily of Regional Measure 3, Bay Bridge toll funding as approved by voters in 2018.
- City funds were primarily used to support planning and design, whereas the EPA Clean Ports grant represents the “last dollars in” for construction.
- The Port will return in the following months to seek further approval to accept and expend grants from UCSF and the San Francisco County Transportation Authority’s (SFCTA), which are also critical for construction of the new facility.