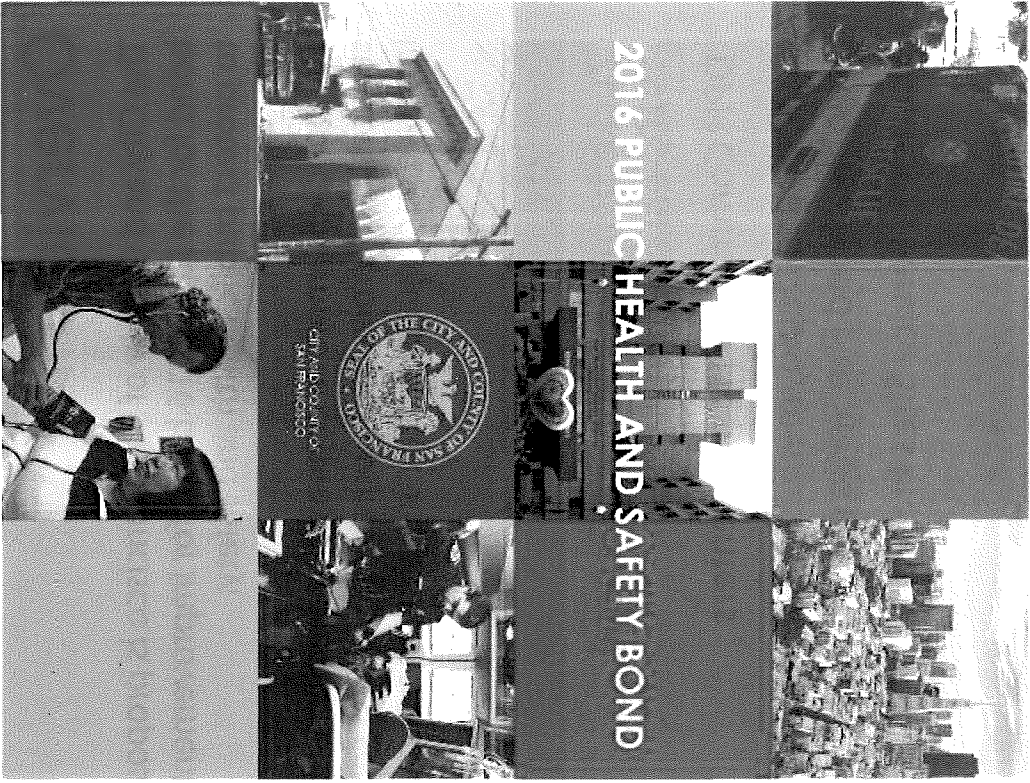


File # 151275 & 15127.  
Received in Orinda  
P.W.



# 2016 Public Health and Safety Bond

Budget and Finance Committee

February 3, 2016



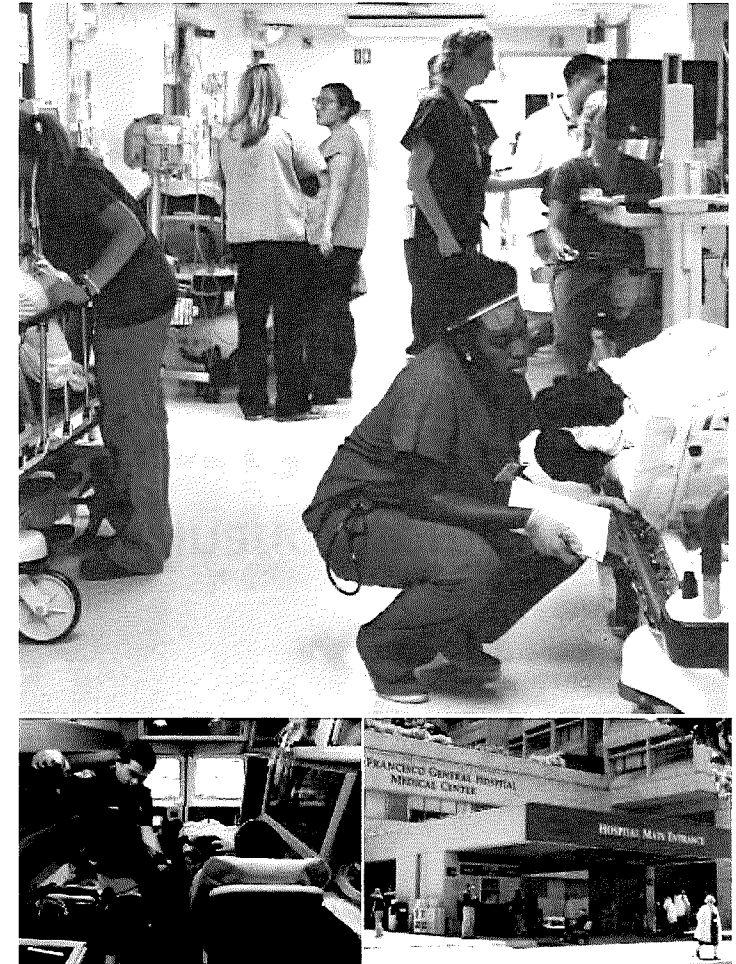
**ONESF**  
Building Our Future

# Overview

The City and County of San Francisco is proposing a \$350 million bond for the June 2016 ballot for improvements to vital City facilities to protect public health and safety.

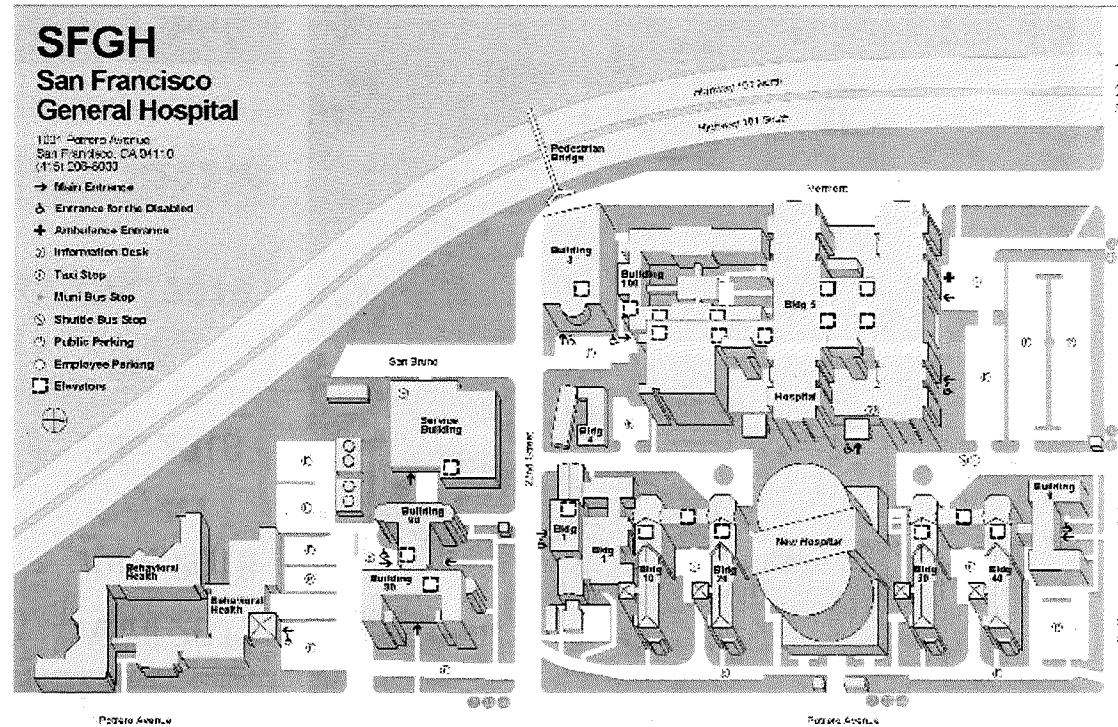
The bond will improve community medical and mental health care services, modernize and upgrade homeless service sites, and improve earthquake safety, fire, and emergency medical response.

Projects	Budget
Zuckerberg San Francisco General, 1970s-era building	\$222 M
DPH Community Health Centers	\$50 M
Ambulance Deployment Facility and Neighborhood Fire Stations	\$58 M
Homeless Service Sites Program	\$20 M
<b>Total:</b>	<b>\$350 M</b>



# Hospital Campus Project Overview

- **Makes critical earthquake safety improvements** to ensure continuing operation of essential medical services, including the **City's only psychiatric emergency department**
- **Improves service delivery through the creation of a centralized ambulatory care center**
- Enables City and UC partners to **meet required seismic standards** of UC Regents to allow continued full operations of all medical, teaching, and research services on the campus



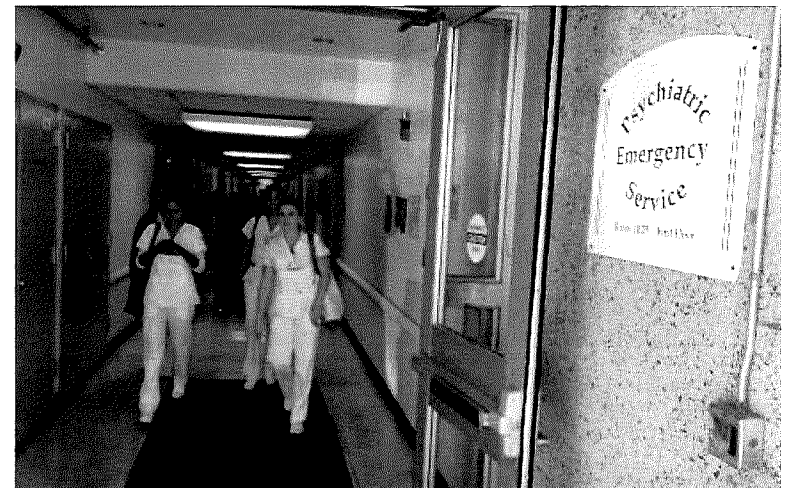
**The existing main hospital had 7,000 psychiatric emergency visits last year.**

# Hospital Schedule and Budget

## Existing 1970s-era hospital building

Start construction for seismic work	April 2017
Start construction for fire/life safety, other renovations	June 2018
Construction for seismic work complete* <i>*UC Regents seismic requirement deadline met. UC staff required to be in seismically safe buildings by Oct 2019.</i>	July 2018
Construction for fire/life safety, other renovations complete	Dec. 2019
<b>Budget</b>	<b>\$222 M</b>

**Once stabilized, the building will serve as a centralized outpatient center for 580,000 visits per year and will house urgent care and psychiatric emergency services.**



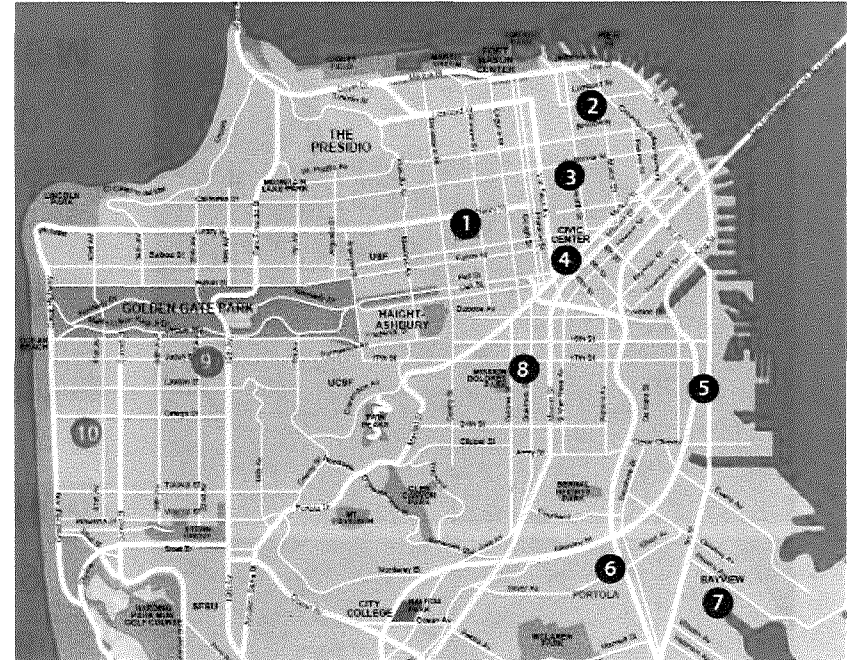


# DPH Community Health Centers Renovation and Expansion

- **Renovates and expands the Southeast Health Center** to accommodate more patients and implement a family-centered model of care, with primary care and behavioral health services located in the same place
- Improves the City's high-demand community health centers with the **expansion of access to mental health**, urgent care, substance abuse, dental and social services

**The San Francisco Health Network clinics had 266,000 primary care visits and 232,000 specialty care visits last year.**

**Southeast Health Center is one of the SF Health Network's busiest clinics.**



# DPH Community Health Centers Schedule and Budget

## Southeast Health Center

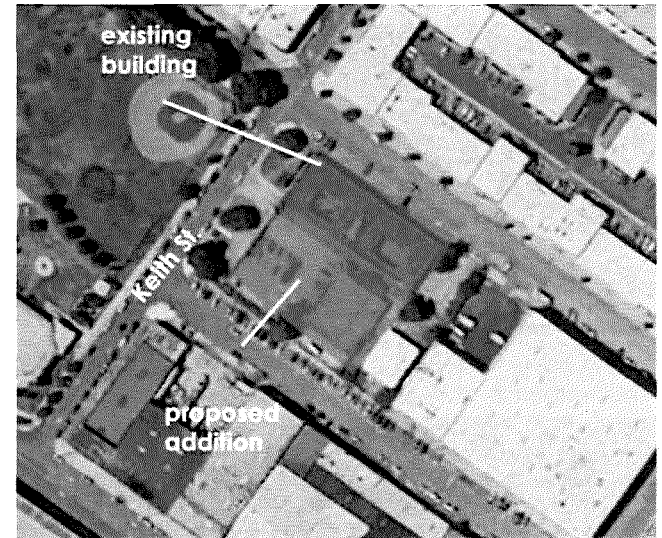
Start construction for renovation	June 2016
Construction for renovation complete; move in	April 2017
Start construction for addition	Jan. 2018
Construction for addition complete; move in	May 2019

**Budget** **\$30 M**

## Other Clinics

Start planning and design	Nov. 2016
Start construction	May 2018
Complete construction*; move-in	Nov. 2019 –
<i>*phase construction occurs at multiple sites</i>	May 2020

**Budget** **\$20 M**



# Ambulance Deployment Facility

- Construct a modern, seismically-safe ambulance deployment facility
- Ensure the ambulance dispatch facility remains operational after a major earthquake
- **Improve emergency medical response**



## San Francisco Fire Department Ambulance Deployment Facility

Start construction	Oct. 2018
Construction complete	Jan. 2021
Move in	March 2021
<b>Budget</b>	<b>\$44 M</b>



# Neighborhood Fire Stations

- Make urgently needed repairs and modernizations to neighborhood fire stations across the City
- Build on the Earthquake Safety and Emergency Response (ESER) bond program

## San Francisco Fire Department Neighborhood Fire Stations

Start planning and design	Nov. 2016
Start construction	May 2017
Complete construction	May 2021
<b>Budget</b>	<b>\$14 M</b>





# Homeless Service Sites Priorities

- **Improve and expand services** delivered at homeless service sites in San Francisco
- Create a **safer and healthier environment** for residents and staff in City-owned shelters
- **Improve efficiency and efficacy of street outreach**, medical and mental health, and stabilization case management services

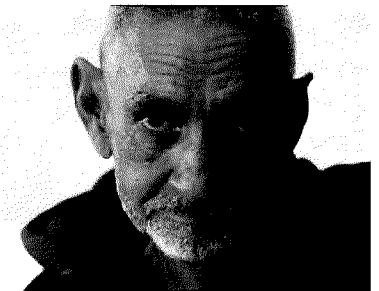
**The City-owned shelters at 1001 Polk and 525- 5<sup>th</sup> St. are the largest shelters in the adult system and represent 57% of the permanent shelter system capacity.**



# Homeless Service Sites Capital Scope

- **Address health and safety deficiencies**, including life safety system repairs and ADA improvements, in City-owned shelters serving homeless families and individuals
- **Create a centralized deployment facility for the SF Homeless Outreach Team** to improve the coordination and delivery of services to severely disabled persons living on the street
- **Expand innovative models**, such as the wraparound, client-centered services delivered at the Navigation Center

**San Francisco's Navigation Center is a one-stop complex -- the first of its kind in the nation, where guests can sleep while they are routed into housing, rehabilitation, employment and other services crucial to keeping people off the streets.**



# Homeless Service Sites Budget and Examples

## Homeless Service Sites Programs (examples)

- Shelter repairs and renovation
- SF Homeless Outreach Team Deployment Facility
- Service site transformation

## Homeless Service Sites Budget

Start planning and design	Nov. 2016
Start construction	May 2017
Complete construction	Nov. 2022
<b>Budget</b>	<b>\$20 M</b>



# 2016 Public Health and Safety Bond

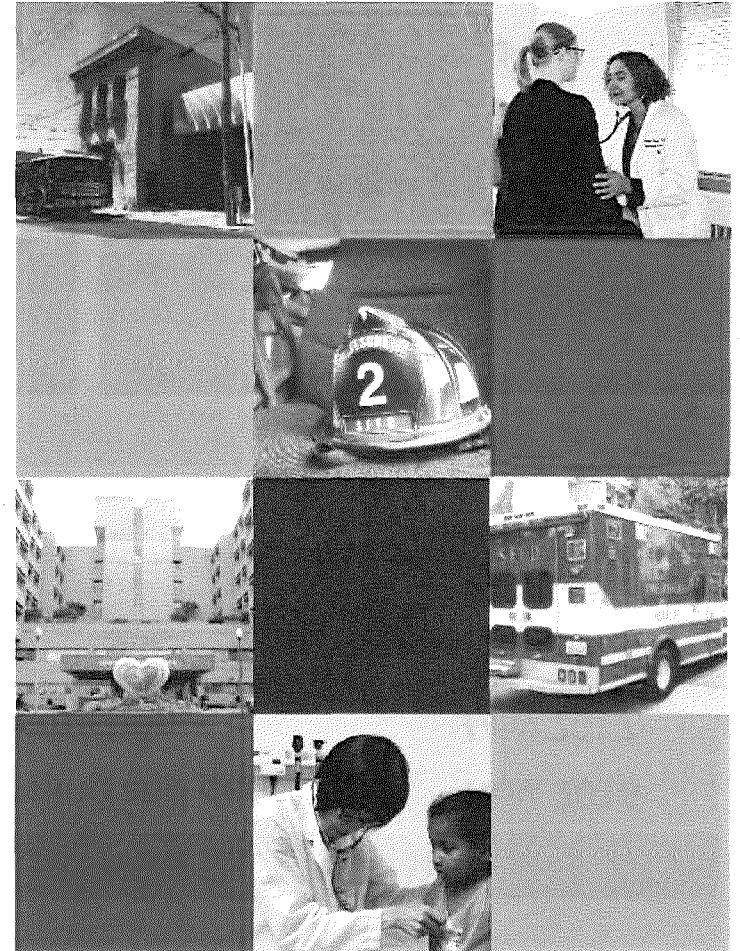
## General Timeline

- Budget and Finance Committee Feb. 3, 2016
- Board of Supervisors Feb. 9 and Feb. 23, 2016
- Election June 7, 2016

## Webpage

[sfpublicworks.org/publichealthbond](http://sfpublicworks.org/publichealthbond)

## Questions?



San Francisco  
Department of Public Health



San Francisco  
Human Services Agency

