

ASSESSMENT DIAGRAM FOR THE ASSESSMENT DISTRICT KNOWN AS THE EXCELSIOR COMMUNITY BENEFIT DISTRICT

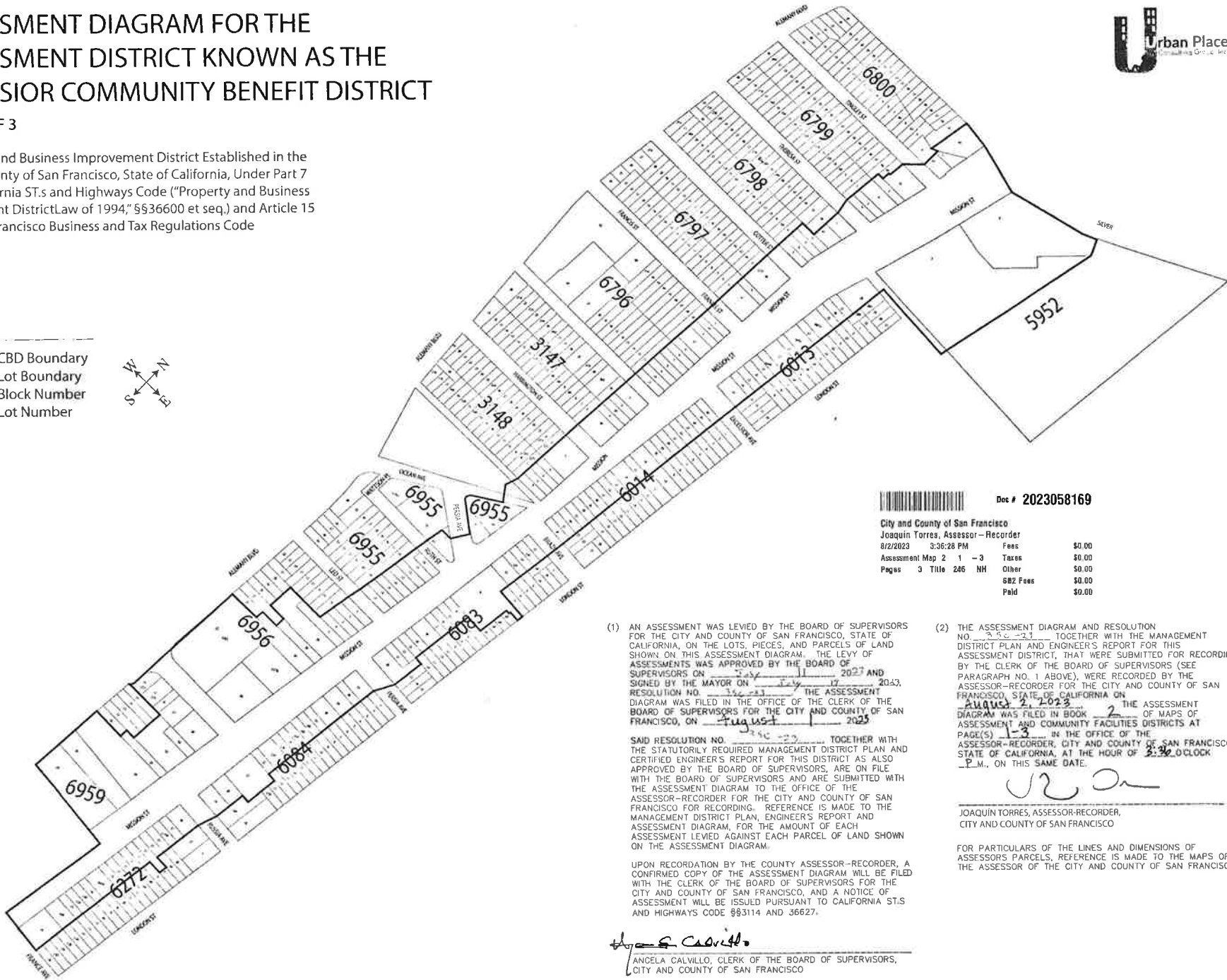


SHEET 1 OF 3

A Property and Business Improvement District Established in the City and County of San Francisco, State of California, Under Part 7 of the California Streets and Highways Code ("Property and Business Improvement District Law of 1994," §§36600 et seq.) and Article 15 of the San Francisco Business and Tax Regulations Code

LEGEND

- CBD Boundary
- Lot Boundary
- Block Number
- Lot Number



Doc # 2023058169

| | | |
|-----------------------------------|----------|--------|
| City and County of San Francisco | | |
| Joaquin Torres, Assessor-Recorder | | |
| 8/2/2023 3:36:28 PM | Fees | \$0.00 |
| Assessment Map 2 1 -3 | Taxes | \$0.00 |
| Pages 3 Title 246 NH | Other | \$0.00 |
| | 882 Fees | \$0.00 |
| | Paid | \$0.00 |

(1) AN ASSESSMENT WAS LEVIED BY THE BOARD OF SUPERVISORS FOR THE CITY AND COUNTY OF SAN FRANCISCO, STATE OF CALIFORNIA, ON THE LOTS, PIECES, AND PARCELS OF LAND SHOWN ON THIS ASSESSMENT DIAGRAM. THE LEVY OF ASSESSMENTS WAS APPROVED BY THE BOARD OF SUPERVISORS ON July 11, 2023 AND SIGNED BY THE MAYOR ON July 17, 2023. RESOLUTION NO. 223-27 THE ASSESSMENT DIAGRAM WAS FILED IN THE OFFICE OF THE CLERK OF THE BOARD OF SUPERVISORS FOR THE CITY AND COUNTY OF SAN FRANCISCO, ON August 1, 2023.

SAID RESOLUTION NO. 223-27 TOGETHER WITH THE STATUTORILY REQUIRED MANAGEMENT DISTRICT PLAN AND CERTIFIED ENGINEER'S REPORT FOR THIS DISTRICT AS ALSO APPROVED BY THE BOARD OF SUPERVISORS, ARE ON FILE WITH THE BOARD OF SUPERVISORS AND ARE SUBMITTED WITH THE ASSESSMENT DIAGRAM TO THE OFFICE OF THE ASSESSOR-RECORDER FOR THE CITY AND COUNTY OF SAN FRANCISCO FOR RECORDING. REFERENCE IS MADE TO THE MANAGEMENT DISTRICT PLAN, ENGINEER'S REPORT AND ASSESSMENT DIAGRAM, FOR THE AMOUNT OF EACH ASSESSMENT LEVIED AGAINST EACH PARCEL OF LAND SHOWN ON THE ASSESSMENT DIAGRAM.

UPON RECORDATION BY THE COUNTY ASSESSOR-RECORDER, A CONFIRMED COPY OF THE ASSESSMENT DIAGRAM WILL BE FILED WITH THE CLERK OF THE BOARD OF SUPERVISORS FOR THE CITY AND COUNTY OF SAN FRANCISCO, AND A NOTICE OF ASSESSMENT WILL BE ISSUED PURSUANT TO CALIFORNIA ST.S AND HIGHWAYS CODE §§3114 AND 36627.

Angela Calvillo
ANGELA CALVILLO, CLERK OF THE BOARD OF SUPERVISORS,
CITY AND COUNTY OF SAN FRANCISCO

(2) THE ASSESSMENT DIAGRAM AND RESOLUTION NO. 223-27 TOGETHER WITH THE MANAGEMENT DISTRICT PLAN AND ENGINEER'S REPORT FOR THIS ASSESSMENT DISTRICT, THAT WERE SUBMITTED FOR RECORDING BY THE CLERK OF THE BOARD OF SUPERVISORS (SEE PARAGRAPH NO. 1 ABOVE), WERE RECORDED BY THE ASSESSOR-RECORDER FOR THE CITY AND COUNTY OF SAN FRANCISCO, STATE OF CALIFORNIA ON August 2, 2023. THE ASSESSMENT DIAGRAM WAS FILED IN BOOK 2 OF MAPS OF ASSESSMENT AND COMMUNITY FACILITIES DISTRICTS AT PAGE(S) 1-2 IN THE OFFICE OF THE ASSESSOR-RECORDER, CITY AND COUNTY OF SAN FRANCISCO, STATE OF CALIFORNIA, AT THE HOUR OF 3:32 O'CLOCK P.M. ON THIS SAME DATE.

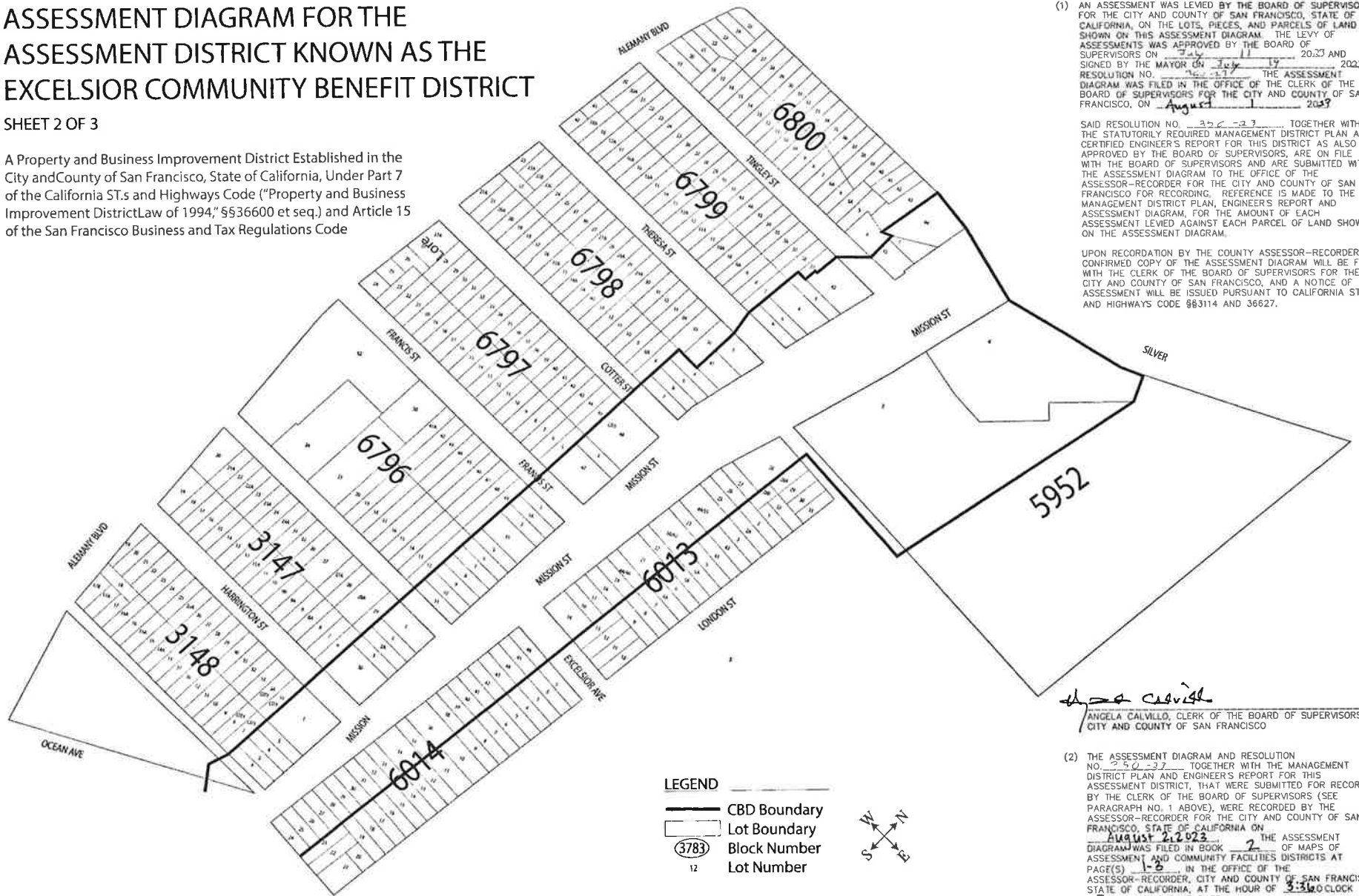
Joaquin Torres
JOAQUIN TORRES, ASSESSOR-RECORDER,
CITY AND COUNTY OF SAN FRANCISCO

FOR PARTICULARS OF THE LINES AND DIMENSIONS OF ASSESSORS PARCELS, REFERENCE IS MADE TO THE MAPS OF THE ASSESSOR OF THE CITY AND COUNTY OF SAN FRANCISCO

ASSESSMENT DIAGRAM FOR THE ASSESSMENT DISTRICT KNOWN AS THE EXCELSIOR COMMUNITY BENEFIT DISTRICT

SHEET 2 OF 3

A Property and Business Improvement District Established in the City and County of San Francisco, State of California, Under Part 7 of the California ST.s and Highways Code ("Property and Business Improvement District Law of 1994," §§36600 et seq.) and Article 15 of the San Francisco Business and Tax Regulations Code



LEGEND

- CBD Boundary
- Lot Boundary
- Block Number
- Lot Number



(1) AN ASSESSMENT WAS LEVIED BY THE BOARD OF SUPERVISORS FOR THE CITY AND COUNTY OF SAN FRANCISCO, STATE OF CALIFORNIA, ON THE LOTS, PIECES, AND PARCELS OF LAND SHOWN ON THIS ASSESSMENT DIAGRAM. THE LEVY OF ASSESSMENTS WAS APPROVED BY THE BOARD OF SUPERVISORS ON July 11 19 2023 AND SIGNED BY THE MAYOR ON July 11 2023. RESOLUTION NO. 2023-17. THE ASSESSMENT DIAGRAM WAS FILED IN THE OFFICE OF THE CLERK OF THE BOARD OF SUPERVISORS FOR THE CITY AND COUNTY OF SAN FRANCISCO, ON August 1 2023.

SAID RESOLUTION NO. 2023-17, TOGETHER WITH THE STATUTORILY REQUIRED MANAGEMENT DISTRICT PLAN AND CERTIFIED ENGINEER'S REPORT FOR THIS DISTRICT AS ALSO APPROVED BY THE BOARD OF SUPERVISORS, ARE ON FILE WITH THE BOARD OF SUPERVISORS AND ARE SUBMITTED WITH THE ASSESSMENT DIAGRAM TO THE OFFICE OF THE ASSESSOR-RECORDER FOR THE CITY AND COUNTY OF SAN FRANCISCO FOR RECORDING. REFERENCE IS MADE TO THE MANAGEMENT DISTRICT PLAN, ENGINEER'S REPORT AND ASSESSMENT DIAGRAM, FOR THE AMOUNT OF EACH ASSESSMENT LEVIED AGAINST EACH PARCEL OF LAND SHOWN ON THE ASSESSMENT DIAGRAM.

UPON RECORDATION BY THE COUNTY ASSESSOR-RECORDER, A CONFIRMED COPY OF THE ASSESSMENT DIAGRAM WILL BE FILED WITH THE CLERK OF THE BOARD OF SUPERVISORS FOR THE CITY AND COUNTY OF SAN FRANCISCO, AND A NOTICE OF ASSESSMENT WILL BE ISSUED PURSUANT TO CALIFORNIA ST.S AND HIGHWAYS CODE §§3114 AND 36627.

Angela Calvillo
ANGELA CALVILLO, CLERK OF THE BOARD OF SUPERVISORS,
CITY AND COUNTY OF SAN FRANCISCO

(2) THE ASSESSMENT DIAGRAM AND RESOLUTION NO. 2023-17, TOGETHER WITH THE MANAGEMENT DISTRICT PLAN AND ENGINEER'S REPORT FOR THIS ASSESSMENT DISTRICT, THAT WERE SUBMITTED FOR RECORDING BY THE CLERK OF THE BOARD OF SUPERVISORS (SEE PARAGRAPH NO. 1 ABOVE), WERE RECORDED BY THE ASSESSOR-RECORDER FOR THE CITY AND COUNTY OF SAN FRANCISCO, STATE OF CALIFORNIA ON August 21 2023. THE ASSESSMENT DIAGRAM WAS FILED IN BOOK 2 OF MAPS OF ASSESSMENT AND COMMUNITY FACILITIES DISTRICTS AT PAGE(S) 1-6, IN THE OFFICE OF THE ASSESSOR-RECORDER, CITY AND COUNTY OF SAN FRANCISCO, STATE OF CALIFORNIA, AT THE HOUR OF 3:30 CLOCK P.M., ON THIS SAME DATE.

Joaquin Torres
JOAQUIN TORRES, ASSESSOR-RECORDER,
CITY AND COUNTY OF SAN FRANCISCO

FOR PARTICULARS OF THE LINES AND DIMENSIONS OF ASSESSORS PARCELS, REFERENCE IS MADE TO THE MAPS OF THE ASSESSOR OF THE CITY AND COUNTY OF SAN FRANCISCO



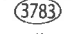
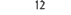


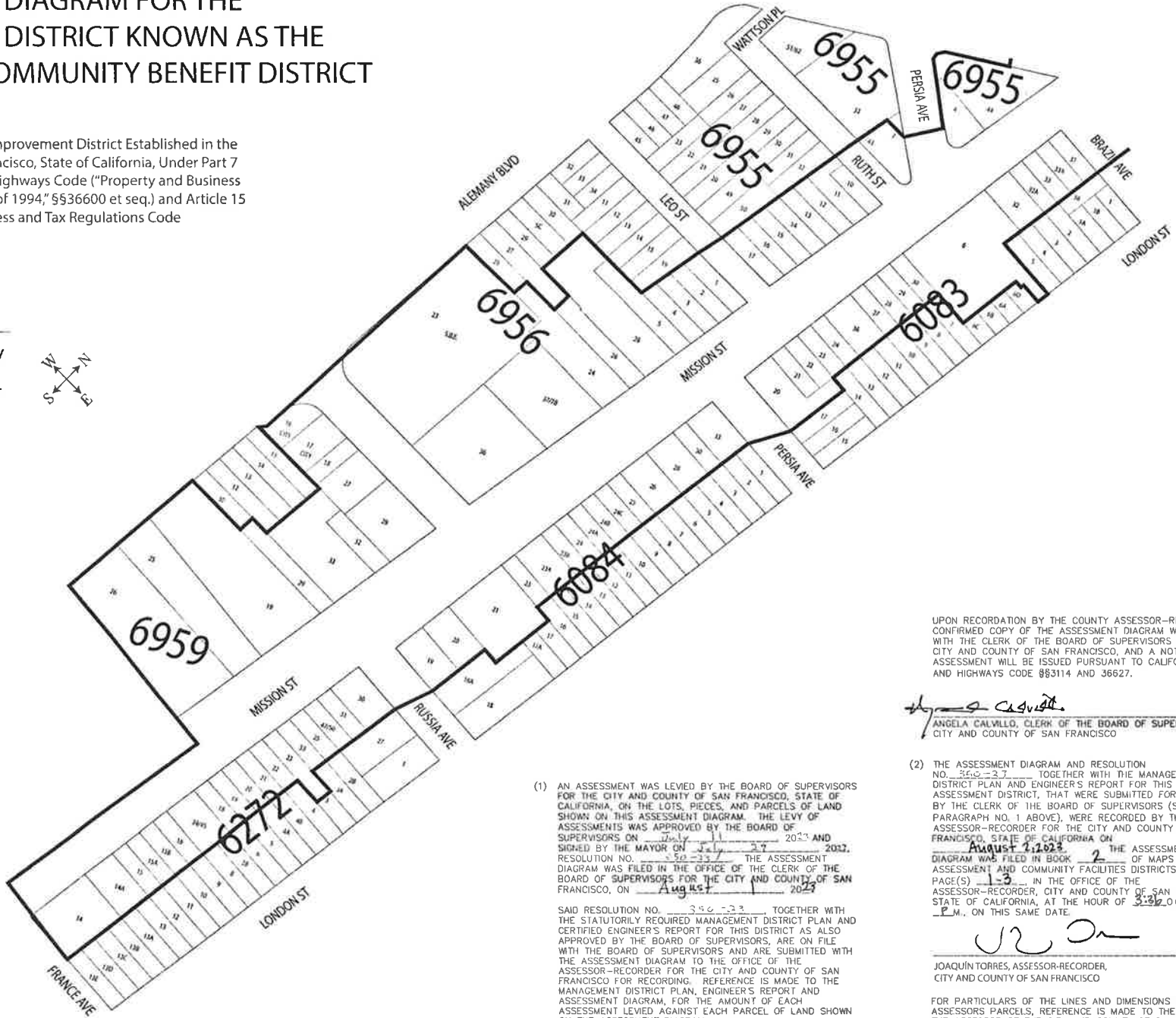
ASSESSMENT DIAGRAM FOR THE ASSESSMENT DISTRICT KNOWN AS THE EXCELSIOR COMMUNITY BENEFIT DISTRICT

SHEET 3 OF 3

A Property and Business Improvement District Established in the City and County of San Francisco, State of California, Under Part 7 of the California ST.s and Highways Code ("Property and Business Improvement District Law of 1994," §§36600 et seq.) and Article 15 of the San Francisco Business and Tax Regulations Code

LEGEND

-  CBD Boundary
-  Lot Boundary
-  Block Number
-  Lot Number



UPON RECORDATION BY THE COUNTY ASSESSOR-RECORDER, A CONFIRMED COPY OF THE ASSESSMENT DIAGRAM WILL BE FILED WITH THE CLERK OF THE BOARD OF SUPERVISORS FOR THE CITY AND COUNTY OF SAN FRANCISCO, AND A NOTICE OF ASSESSMENT WILL BE ISSUED PURSUANT TO CALIFORNIA ST.S AND HIGHWAYS CODE §§3114 AND 36627.


ANGELA CALVILLO, CLERK OF THE BOARD OF SUPERVISORS, CITY AND COUNTY OF SAN FRANCISCO

(1) AN ASSESSMENT WAS LEVIED BY THE BOARD OF SUPERVISORS FOR THE CITY AND COUNTY OF SAN FRANCISCO, STATE OF CALIFORNIA, ON THE LOTS, PIECES, AND PARCELS OF LAND SHOWN ON THIS ASSESSMENT DIAGRAM. THE LEVY OF ASSESSMENTS WAS APPROVED BY THE BOARD OF SUPERVISORS ON July 11, 2013 AND SIGNED BY THE MAYOR ON July 27, 2013. RESOLUTION NO. 50-337. THE ASSESSMENT DIAGRAM WAS FILED IN THE OFFICE OF THE CLERK OF THE BOARD OF SUPERVISORS FOR THE CITY AND COUNTY OF SAN FRANCISCO, ON August 1, 2013.

(2) THE ASSESSMENT DIAGRAM AND RESOLUTION NO. 350-27 TOGETHER WITH THE MANAGEMENT DISTRICT PLAN AND ENGINEER'S REPORT FOR THIS ASSESSMENT DISTRICT, THAT WERE SUBMITTED FOR RECORDING BY THE CLERK OF THE BOARD OF SUPERVISORS (SEE PARAGRAPH NO. 1 ABOVE), WERE RECORDED BY THE ASSESSOR-RECORDER FOR THE CITY AND COUNTY OF SAN FRANCISCO, STATE OF CALIFORNIA ON August 2, 2013. THE ASSESSMENT DIAGRAM WAS FILED IN BOOK 2 OF MAPS OF ASSESSMENT AND COMMUNITY FACILITIES DISTRICTS AT PAGE(S) 1-3, IN THE OFFICE OF THE ASSESSOR-RECORDER, CITY AND COUNTY OF SAN FRANCISCO, STATE OF CALIFORNIA, AT THE HOUR OF 3:26 O'CLOCK P.M., ON THIS SAME DATE.


JOAQUIN TORRES, ASSESSOR-RECORDER, CITY AND COUNTY OF SAN FRANCISCO

FOR PARTICULARS OF THE LINES AND DIMENSIONS OF ASSESSORS' PARCELS, REFERENCE IS MADE TO THE MAPS OF THE ASSESSOR OF THE CITY AND COUNTY OF SAN FRANCISCO