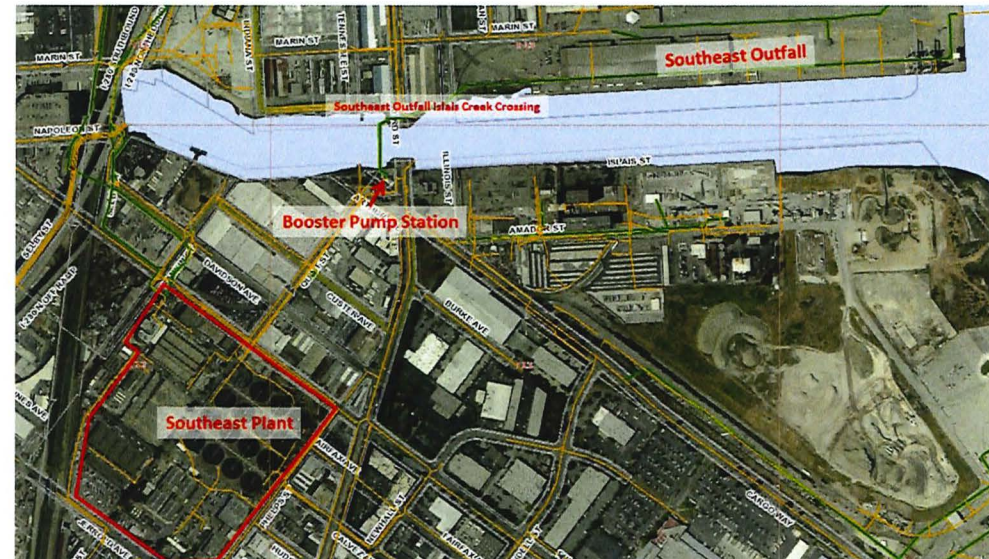


Southeast Outfall Islais Creek Crossing – Emergency Bypass Booster Pump Station (BPS) Overview



- Booster Pump Station constructed 1967, last upgrade in 2002
- BPS pumps final treated effluent from Southeast Plant into San Francisco Bay
- Flow Conveyance
 - 50-60 Million Gallons per Day Average
 - 110 Million Gallons per Day Peak
- Discharge: Pressurized Pipelines crossing Islais Creek into the Southeast Outfall System
 - Planned Islais Creek Crossing Replacement



Southeast Outfall Islais Creek Crossing – Emergency Bypass Declaration of Emergency



- October 18, 2018: Wastewater Enterprise staff discovered a leak from the Southeast Outfall Islais Creek Crossing.
- Leaking Force Main Risks
 - The operation of the leaking pipe represents non-compliance under the Southeast Water Pollution Control Plant's NPDES permit.
 - The pipe was leaking into Islais Creek, a waterway which has been identified by the Regional Water Quality Board 303(d) List of Impaired Water Bodies.
- October 22, 2018: SFPUC declared an emergency according to SF Administrative Code Chapter 6.60.

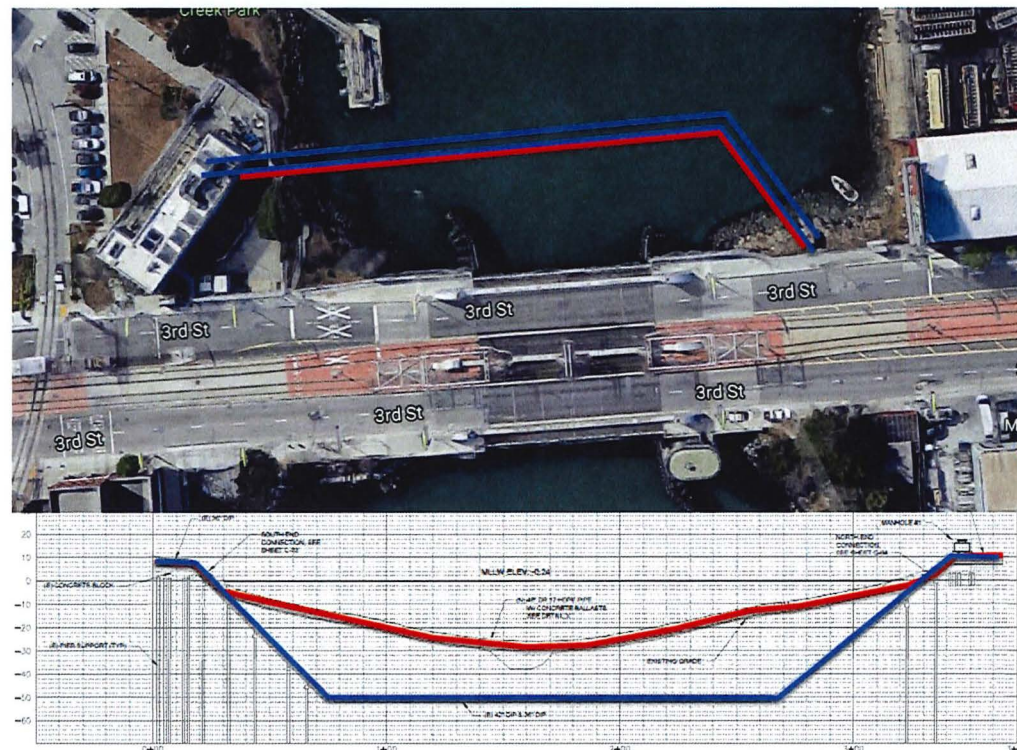
Southeast Outfall Islais Creek Crossing – Emergency Bypass Booster Pump Station (BPS) Overview



- December 26, 2018: Based on further design and field findings, SFPUC revised the emergency declaration with an increased anticipated value of \$4.912 million under both SF Administrative Code Chapter 6.60 and Chapter 21.15.
- September 25, 2019: After multiple unforeseen conditions during construction in August 2019, the project team concluded costs will exceed the initially approved budget of \$4.912 million; thus, recommended to revise the emergency declaration to \$6.25 million.

Southeast Outfall Islais Creek Crossing – Emergency Bypass Response to Emergency & Bypass Initial Designs

- Initial Construction Duration Estimate: 9 months
- Initial Project Budget Estimate: Not to Exceed \$5 million
- CEQA: Statutory Exemption



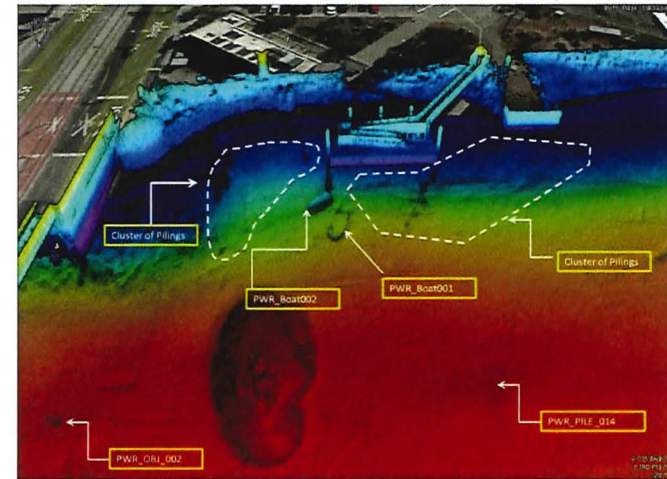
Existing 36" and 42"
Force Main
Alignment

New 42" Inner
Diameter
Temporary
Emergency Bypass
Pipe

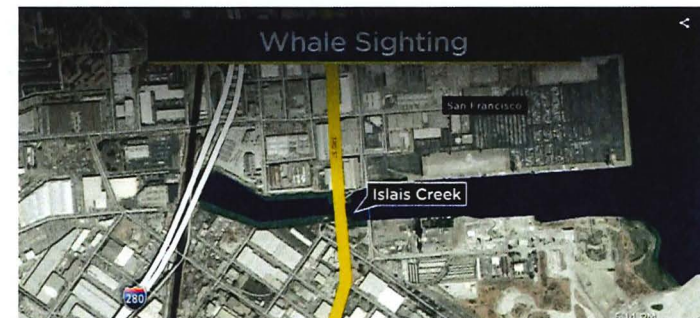
Southeast Outfall Islais Creek Crossing – Emergency Bypass Challenges Encountered



Poor soil conditions and debris encountered during construction, adjacent to aging pipeline



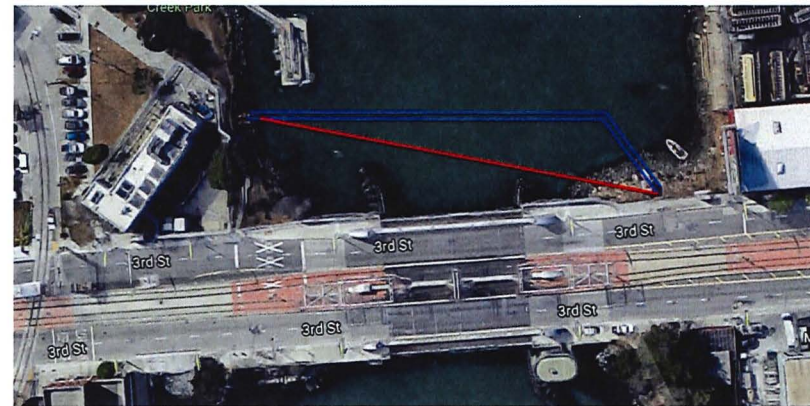
Unknown site conditions were found during construction.



Active marine life within project area were encountered.

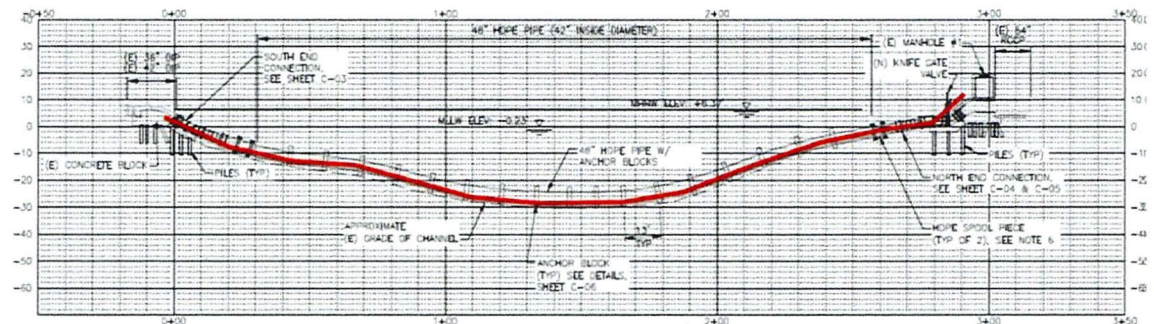
Southeast Outfall Islais Creek Crossing – Emergency Bypass New Horizontal Alignment

- Actual Construction Duration: 6 months (June – December)
 - Substantially complete as of October 2019
 - Demobilization in November 2019
 - Final site work completion, target December 2019
- Actual Cost: Not to Exceed \$5.5 million
- CEQA: Statutory Exemption



Existing 36" and 42" Force Main Alignment

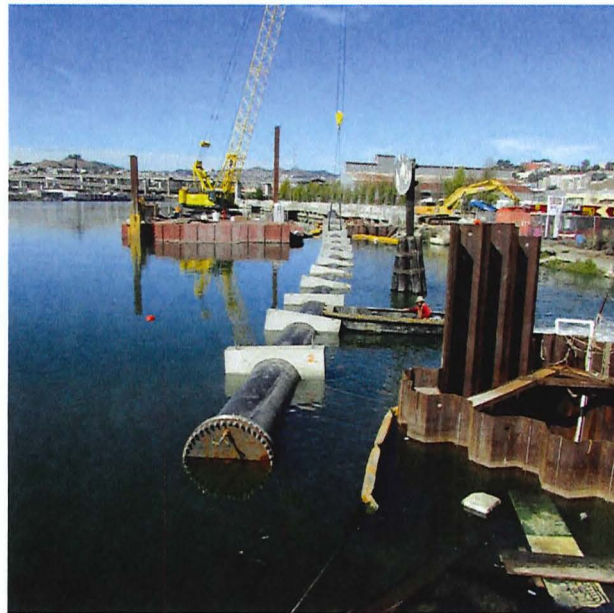
New 42" Inner Diameter Temporary Emergency Bypass Pipe



Southeast Outfall Islais Creek Crossing – Emergency Bypass Current Status



- Construction is substantially complete as of October 8, 2019.
- Complete all remaining outstanding site work, targeted for December 2019.



Southeast Outfall Islais Creek Crossing – Emergency Bypass Request of Committee



- Support approval of the revised emergency declaration for constructing the emergency bypass pipeline.



Southeast Outfall Islais Creek Crossing – Emergency Bypass



Thank you!
Questions?