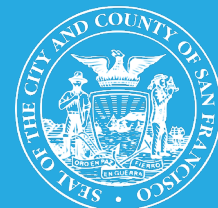


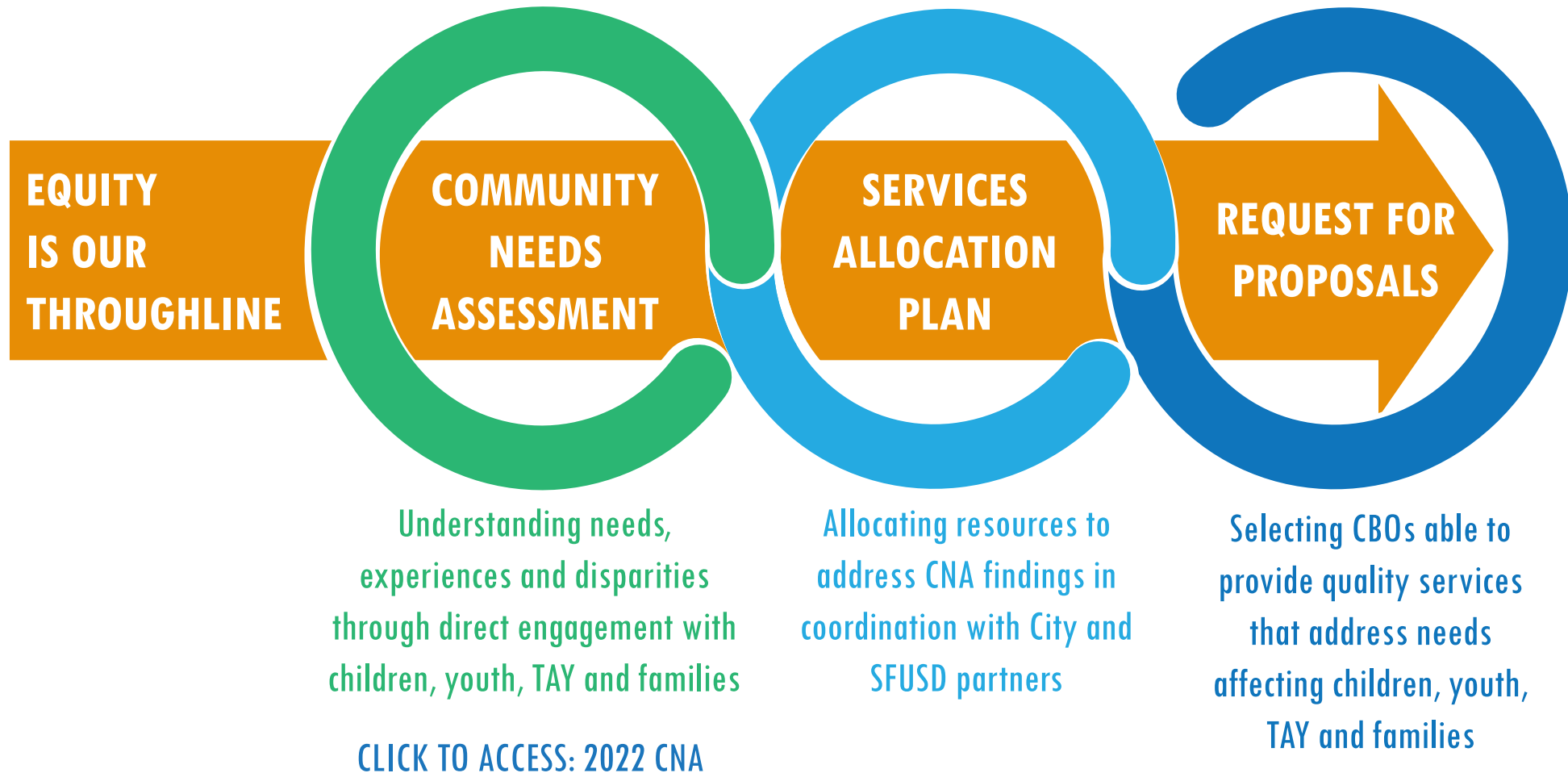


DCYF Services Allocation Plan (SAP)



DCYF's Planning Cycle

DCYF operates according to a 5-year funding cycle that includes 3 planning phases:





Using different approaches to achieve different results

The [2022 CNA](#) showed that many of the needs and disparities that have affected the City's children, youth, TAY and their families for years continue to persist.

As we enter the 2024-29 funding cycle, we recognize that we cannot do the same things and expect different results. Instead, we must **operate differently**, with both **intention** and **collaboration**.

DCYF's Formula



2024-29 DCYF Funding Overview

DCYF estimates having roughly:
\$127.2M - \$140.6M
annually, in available funding for 2024-29 funding cycle

DCYF GRANTS:
\$87.3M - \$96.5M
including Funding Strategies &
Initiatives

PARTNERSHIPS:
\$30.7M - \$33.9M
with other City Agencies & SFUSD

DCYF IMPLEMENTED EFFORTS:
\$9.2M - \$10.1M
Including Evaluation & TA/CB

Our Result Areas

**NURTURING FAMILIES
& COMMUNITIES**



**PHYSICALLY &
EMOTIONALLY HEALTHY**



**READY TO LEARN
& SUCCEED IN SCHOOL**



**READY FOR COLLEGE,
WORK & PRODUCTIVE
ADULTHOOD**



2024-29 Service Area Allocations



**READY TO LEARN
& SUCCEED IN
SCHOOL**

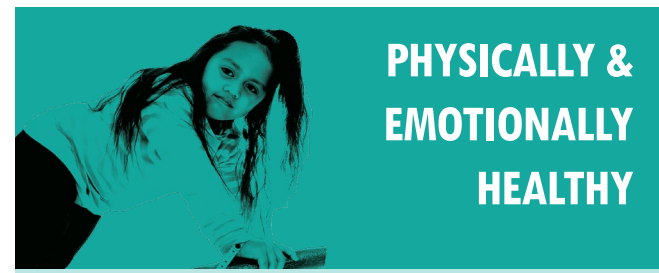
**READY FOR COLLEGE,
WORK & PRODUCTIVE
ADULTHOOD**



**NURTURING
FAMILIES &
COMMUNITIES**



**PHYSICALLY &
EMOTIONALLY
HEALTHY**



**ENRICHMENT & SKILL BUILDING
\$8.9M - \$9.8M**

**JUSTICE SERVICES
\$12.7M - \$14.0M**

**EDUCATIONAL SUPPORTS
\$6.0M - \$6.6M**

**OUTREACH & ACCESS
\$3.1M - \$3.5M**

**EARLY CARE & EDUCATION
\$17.0M - \$18.8M**

**YOUTH EMPOWERMENT
\$3.9M - \$4.4M**

**FAMILY EMPOWERMENT
\$14.3M - \$15.8M**

**EMOTIONAL WELL BEING
\$4.5M - \$5.0M**

**YOUTH WORKFORCE DEVELOPMENT
\$23.4M - \$25.8M**

SUPPORTING OUR SERVICES & RESULTS

EVALUATION \$2.1M - \$2.3M

TECHNICAL ASSISTANCE & CAPACITY BUILDING \$3.7M - \$4.1M



Thank you!