



DEPARTMENT OF
HOMELESSNESS AND
SUPPORTIVE HOUSING

Minda Lee
Permanent Supportive Housing

Board of Supervisors
Budget & Finance Committee
March 22, 2018

File # 180240
Received in Council
3/22/18
[Signature]

The Challenge

- San Francisco faces a significant challenge of homelessness.
- **7,500** people experience homelessness in San Francisco on any given night.
- **4,300** of those people are unsheltered living on the streets.
- Supportive Housing is an evidence based best practice to end homelessness for our most vulnerable residents.
- The Board of Supervisor recently passed an ordinance declaring a shelter crisis in San Francisco.

Background: Supportive Housing

- HSH oversees approximately 7,400 units of supportive housing that house ~10,000 formerly homeless people in SF.
- Supportive Housing is subsidized housing with onsite support services.
- Supportive Housing is a highly successful intervention, with a less than 2% eviction rate.
- Since 2004, HSH has housed ~14,500 people in supportive housing.

Background: Supportive Housing

Types of Supportive Housing

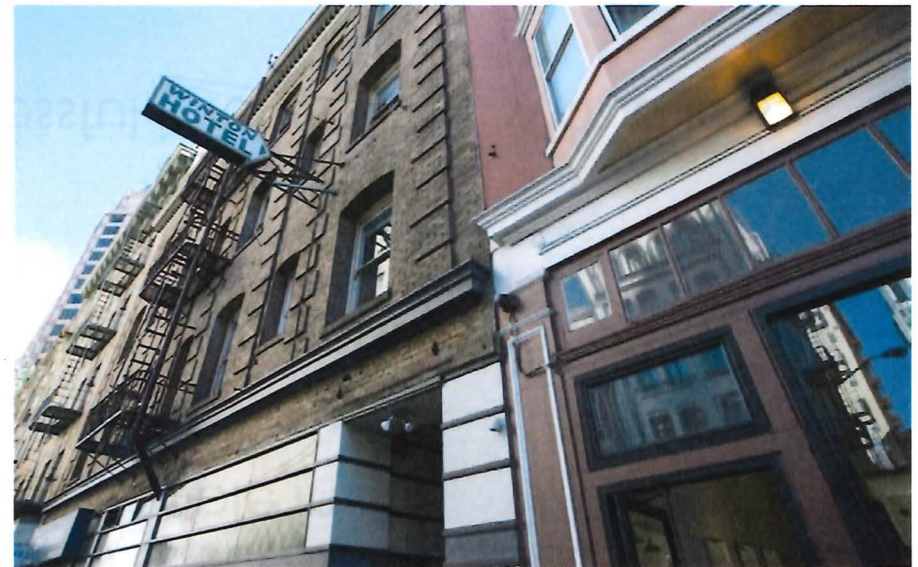
- New build
- Master lease

Residents

- People experiencing homelessness
- People with disabilities

Services

- Onsite case management
- 24 hour support
- Connections to health, treatment, employment and other services

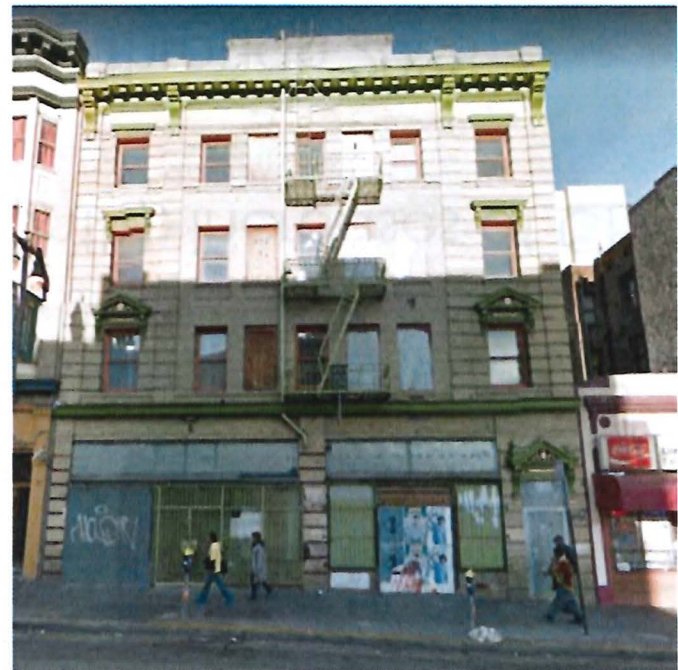


The Minna Lee – Summary of Lease Terms

- 51 residential units at 149 6th Street (6th St. & Mission St.)
- 10-year lease; initial term to begin on or around May 1, 2018
- \$468,000 per year (\$765 per unit per month); increases at CPI
- Two, five-year options to extend the term through 2038
- Ground floor commercial space and basement included

The Minna Lee

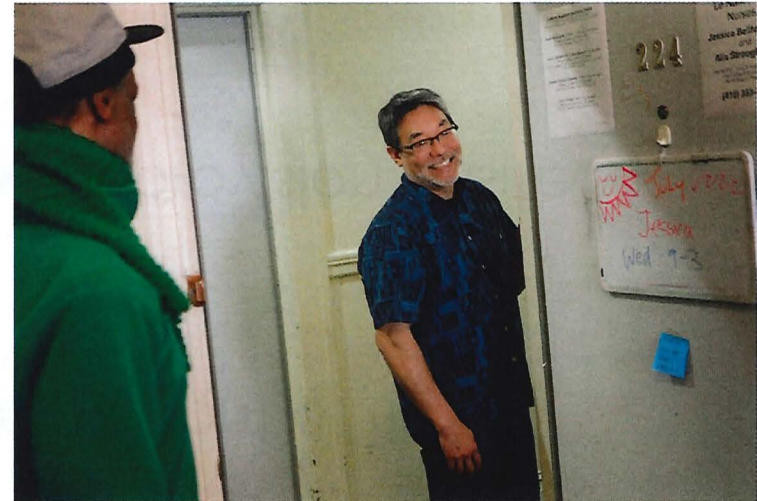
- Part of Mayor Lee's "1,000 Person Project"
- Vacant SRO building
- HSH to master lease as supportive housing
- Housing for ~50 people exiting chronic homelessness



The Minna Lee

The Minna Lee will offer permanent exits from homelessness for people in Navigation Centers and other highly vulnerable people experiencing homelessness.

- Onsite social services include:
 - Case management
 - Care coordination
 - Social engagement
 - Linkages to other services



The Minna Lee

- 24 hour staffing will improve safety in front of the building
- Professional management & service provision onsite
- Minimal improvements needed

Community Process

- Letter sent to neighbors within 300 feet of the project
- Community meeting hosted on March 7th
 - Community members were largely supportive of the proposed project at the Minna Lee
- Neighborhood Business Outreach
 - Businesses in the neighborhood are largely supportive of the project and eager to activate the vacant space

