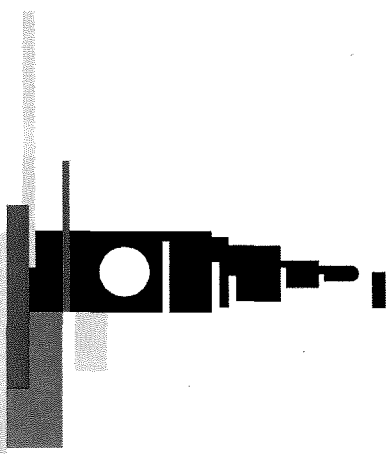
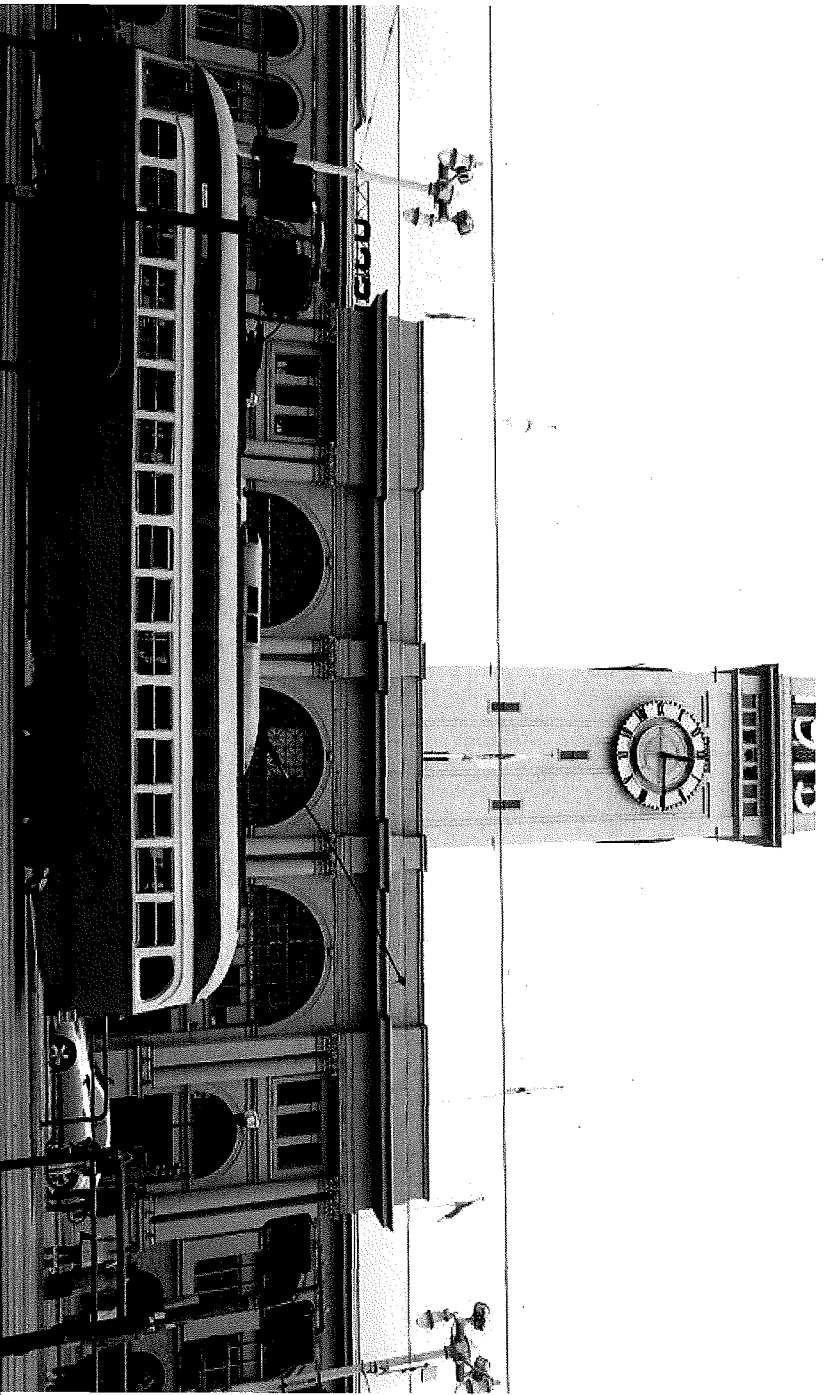


File # 170385
Received in Committee
5/25/17
fso



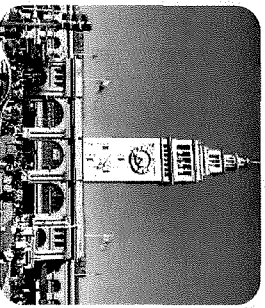
PORT OF
SAN FRANCISCO

Fiscal Year 2017-18 Outlook

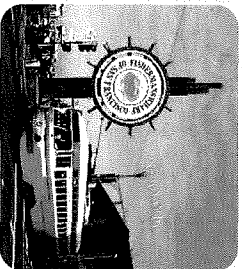
MAY 25, 2017 – BOARD OF SUPERVISORS, BUDGET & FINANCE COMMITTEE

A Diverse Portfolio

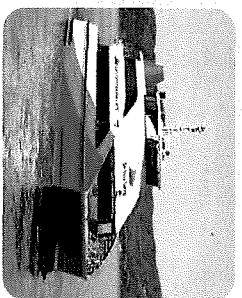
Celebrating the Past, Present, & Future



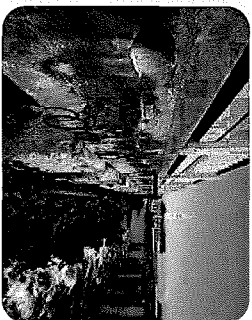
Historic Preservation & Capital Renewal
National Historic District – Among Most Endangered
~\$1B Capital Renewal Backlog



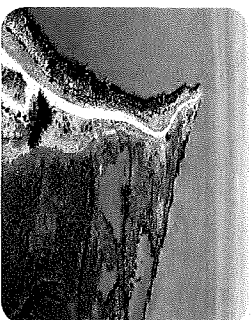
Economic Development & Tourism
~600 leases
\$80M annual revenues
Contributes to \$11B annual City tourism revenue



Maritime
300,000 Cruise Passengers
4.8M Ferry Riders
Auto Transport & Other Cargo
Ship Repair
Fishing



Resiliency
Seawall Seismic & Sea Level Rise Improvements
Resilience by Design
Partnerships: WETA, FEMA, & DEM



Outdoors & Sustainability
Blue-Greenway
\$68M Parks Bonds
Extensive Public Access
Environmental Stewardship

FY 2017-18: Budget Overview

No Major Changes for off-year of the Port's fixed biennial budget

\$104.5 Million Operating Revenues

- Critical to address growing operating costs, primarily for personnel
- **258 FTEs** supporting seven Port Divisions and the Fire Boat
- **\$16.2 Million** Capital Designation dedicates the Port's Net Operating Income to future capital budgets

\$30.7 Million Capital Budget is a significant achievement

- **\$13.4 Million** Operating Revenues were reserved in FY 2016-17 budget
- **\$6.5 Million** General Fund Support for Citywide-priority projects

Sources

Operating Revenue	\$ 104,479,000
Project Sources	\$ 14,513,525
<u>Fund Balance</u>	<u>\$ 31,629,156</u>
Total Sources	\$ 150,621,681

Uses

Operating Expenses	\$ 82,939,684
Annual Project Expenses	\$ 8,318,535
<u>Capital Expenses</u>	<u>\$ 30,727,281</u>
Subtotal, Uses	\$ 121,985,500
Operating Reserve (15%)	\$ 12,427,000
<u>Capital Designation</u>	<u>\$ 16,209,181</u>
Subtotal, Reserves	\$ 28,636,181
Total Uses	\$ 150,621,681
Balance	\$ -

FY 2017-18: Revenue Outlook

Waning Revenue Growth may impact the Port's FY 2017-18 budget

Shortfalls will be Absorbed by reducing Capital Designation

Potential Economic Indicators:

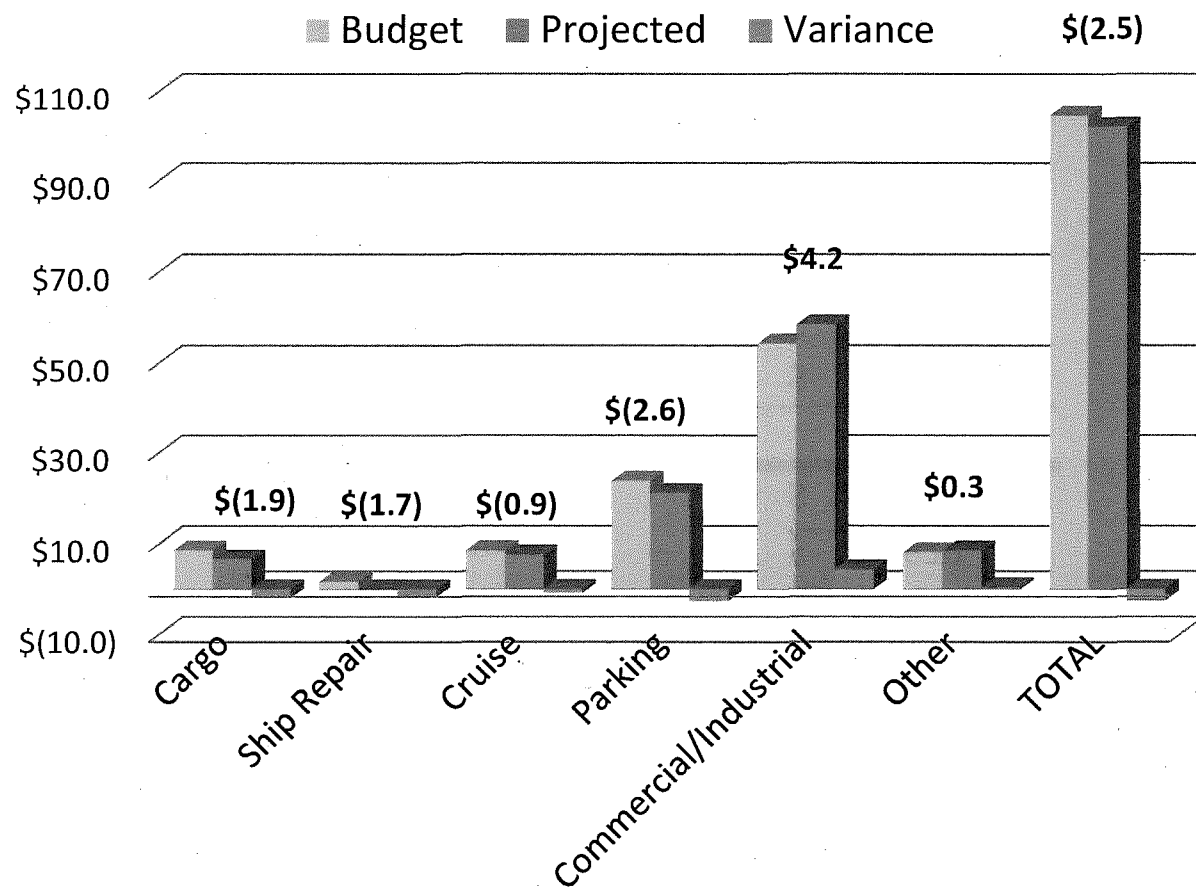
- **Percentage Rents** slowing growth
- **Cruise** planning for fewer calls and reduced passenger volume

Parking impacted by reduced rents and citywide trend in reduced Fines

Cargo-Auto Transport has promise to grow over time

Ship Repair seeking new operator

Operating Revenue Outlook FY 2017-18 (\$ millions)

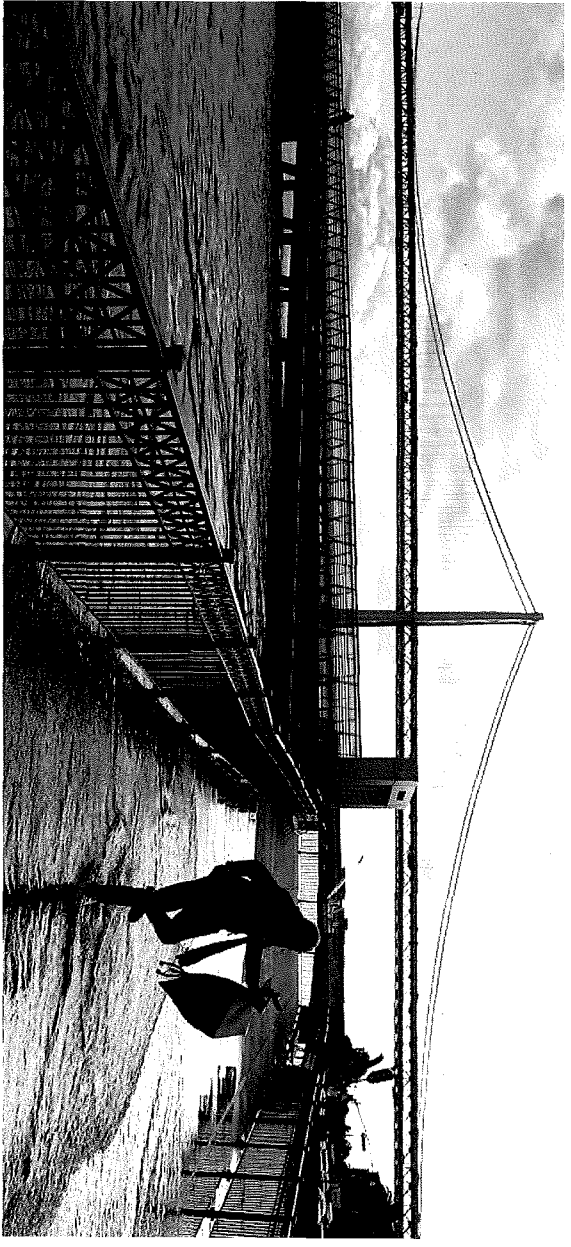
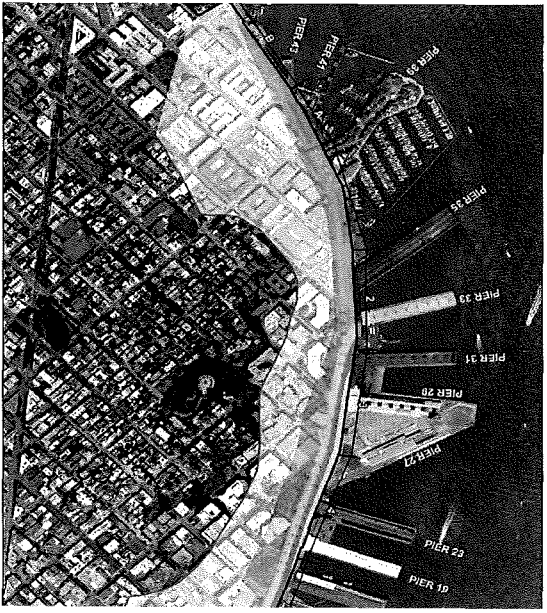


Resilience: Seawall Project

1916 Seawall Construction Finished
3 Miles Historic Waterfront
72% Risk of Major Quake ~30 Years
\$25 Billion Protected Assets



\$500 million Immediate Life-Safety
\$5 Billion Long-term Investment
\$350 Million Proposed GO Bond
Finance Working Group will
Recommend Funding Options



Maritime/ Real Estate: Eco-Industrial Expansion

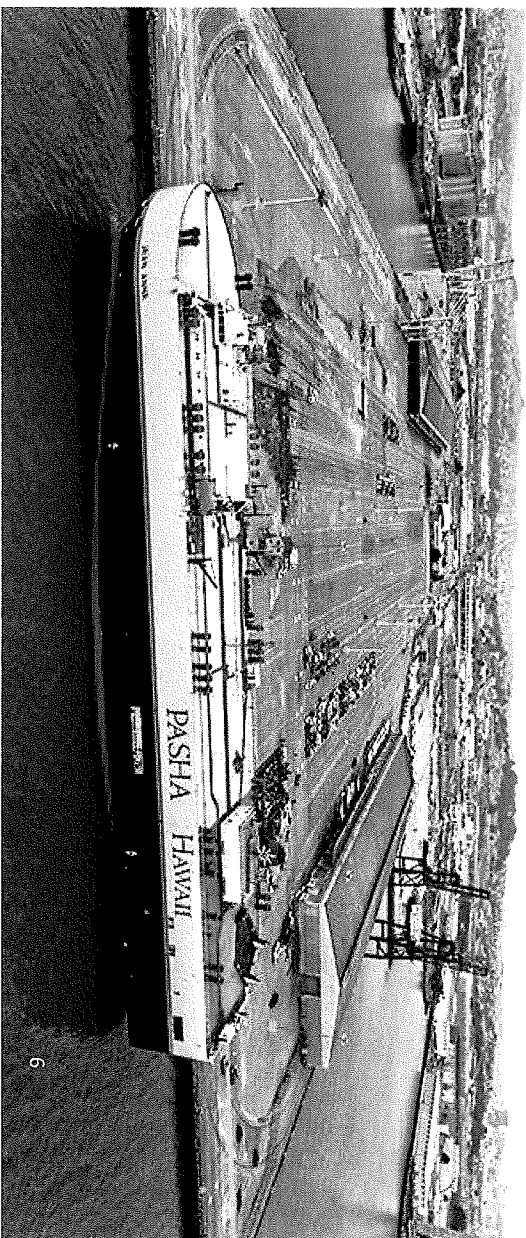
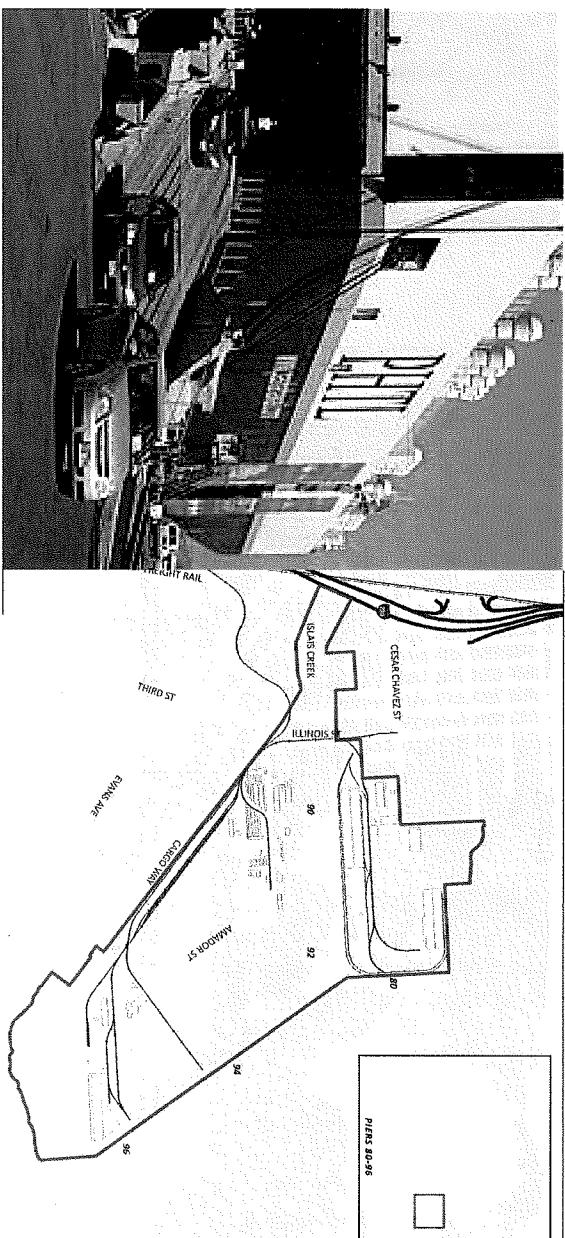
5 Piers Dedicated to Industrial Uses
1 Recycling Center

\$8.5 Million Investment at
Backlands for Commercial Leasing
Space

50,000 Autos Planned at Pier 80
with Growth Forecasted to Pier 96

50 Union Jobs Per Call

1.2 Million Square Feet Planned
Leasing for Additional Auto,
Construction Lay-Down, and Waste
Management



Maritime:

Ferry Expansion

Alcatraz Landing

\$5 Million Facility Improvements

Ferry Terminal Expansion

\$75 Million Project for 2019

3 New/Upgraded Landings

15,000 Current Daily Passengers

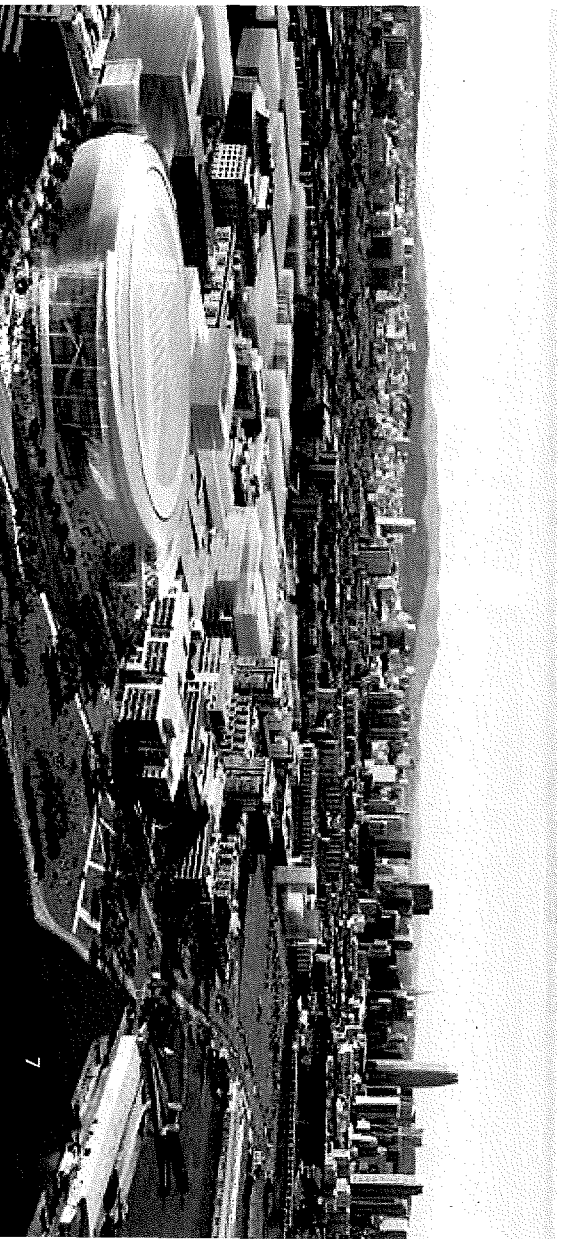
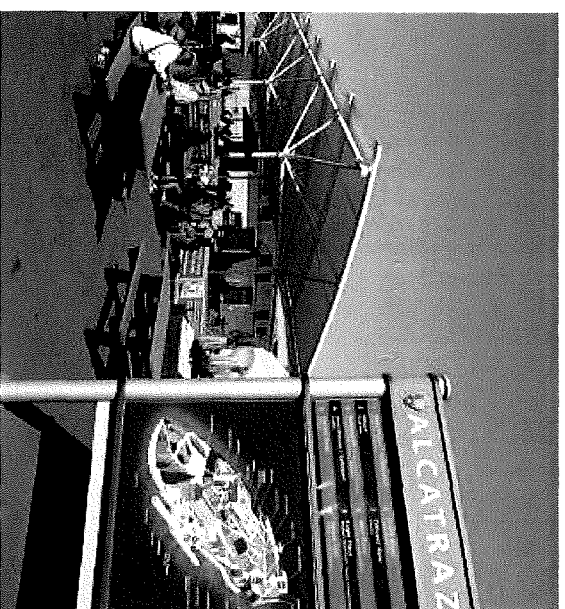
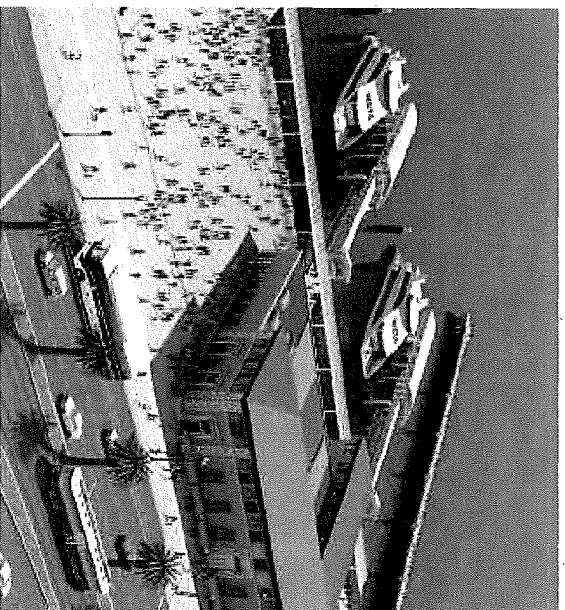
Mission Bay Ferry Terminal

\$43 Million Project for 2021

\$36 Million Funding Shortfall

Serve Growing Employment,
Residential, & Special Events
Demand

10,000 Weekly Passenger Capacity



Development & Historic Preservation: Southern Bayfront

2014 Orton Project-Pier 70
Approved and Now Underway

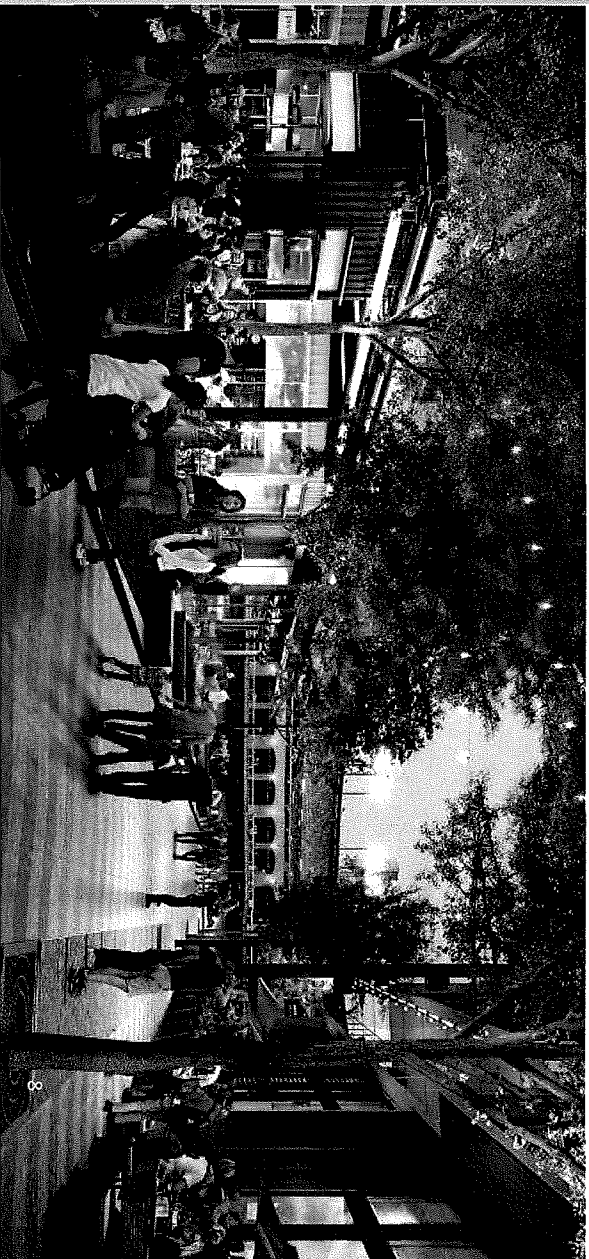
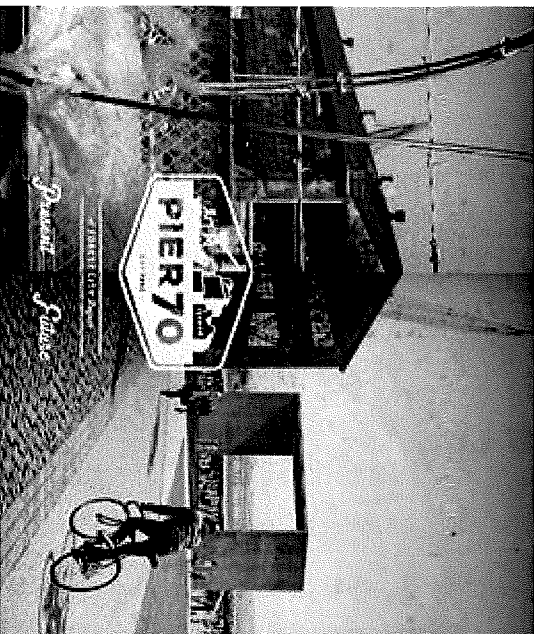
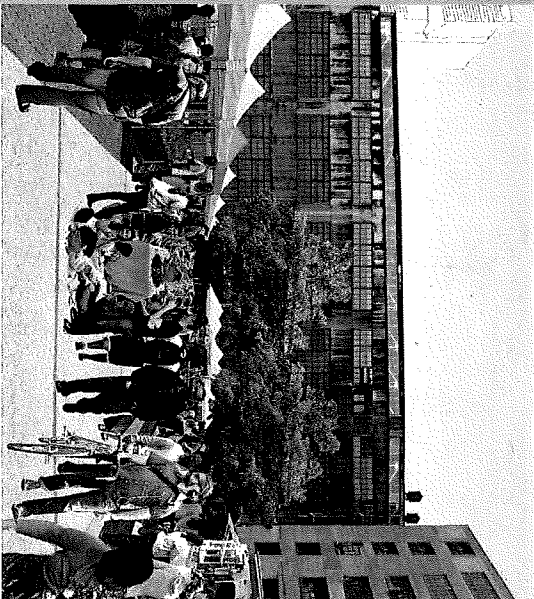
September 2017 Forest City-Pier
70 Planned Approval

Early 2018 Mission Rock-Seawall
Lot 337 Planned Approval

\$40 Million Historic Facility
Restoration

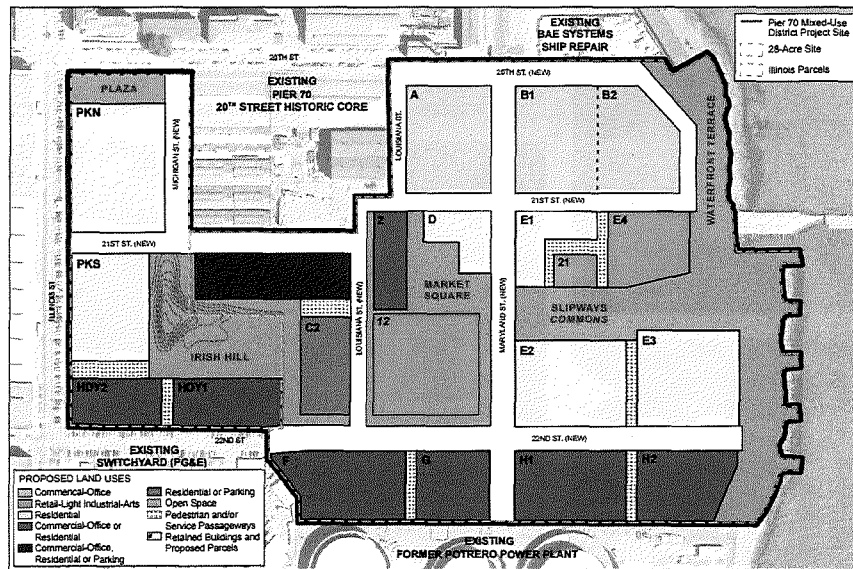
14,000 Jobs at New Commercial
Sites

3,500 Residential Units Including
1,200 Affordable units

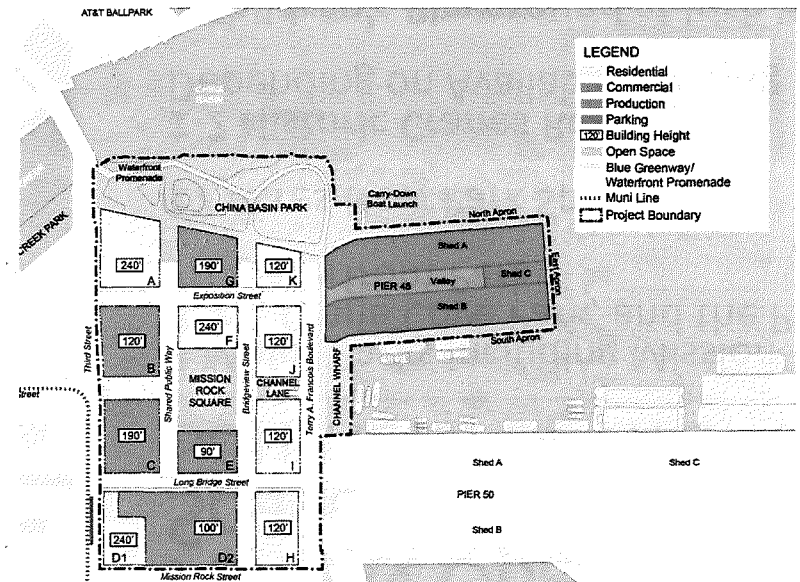


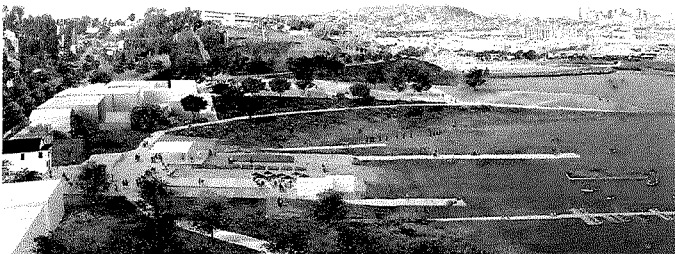
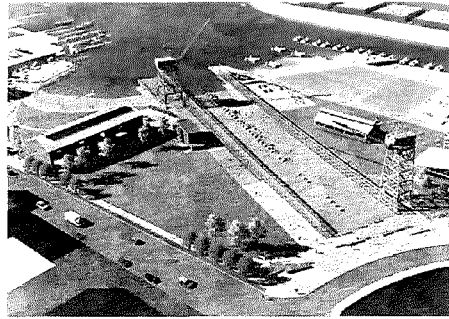
Development & Historic Preservation: Southern Bayfront

FOREST CITY



MISSION ROCK





Parks & Open Space: Southern Bayfront

3 Major Parks including Mission Rock, Crane Cove Park, and the Pier 70 Waterfront Park

17 Acres New Park Space

1-2 Historic Cranes Restored
Depending on Available Funding

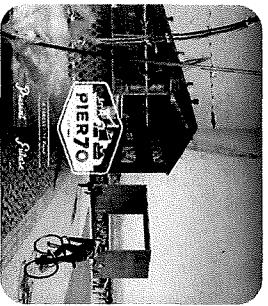
1 Children's Playground at Irish Hill

2018 Scheduled Completion for
Crane Cove Park

India Basin Shoreline Park Will
Neighbor the Port to the South

Looking Ahead

Major Activities, Fiscal Year 2017-18



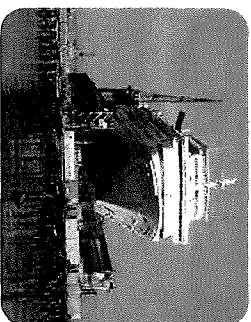
Pier 70 Project Approval
Fall 2017 Board Approval of DDA and DA
Initiate Phase I Horizontal Improvements



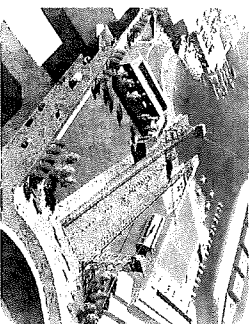
Seawall Resiliency Project
Move Planning Phase Forward
Finalize Funding Strategy



Ferry Expansion
Downtown Ferry Terminal Project Construction
Mission Bay Ferry Landing Design & Permitting Underway



Ship Yard Operator
RFP for New Operator for Ship Repair
Maintain Union Jobs in a Historic Site



Crane Cove Park Underway
Construction Underway
Scheduled for Completion in 2018

