

Tenderloin Night Conditions



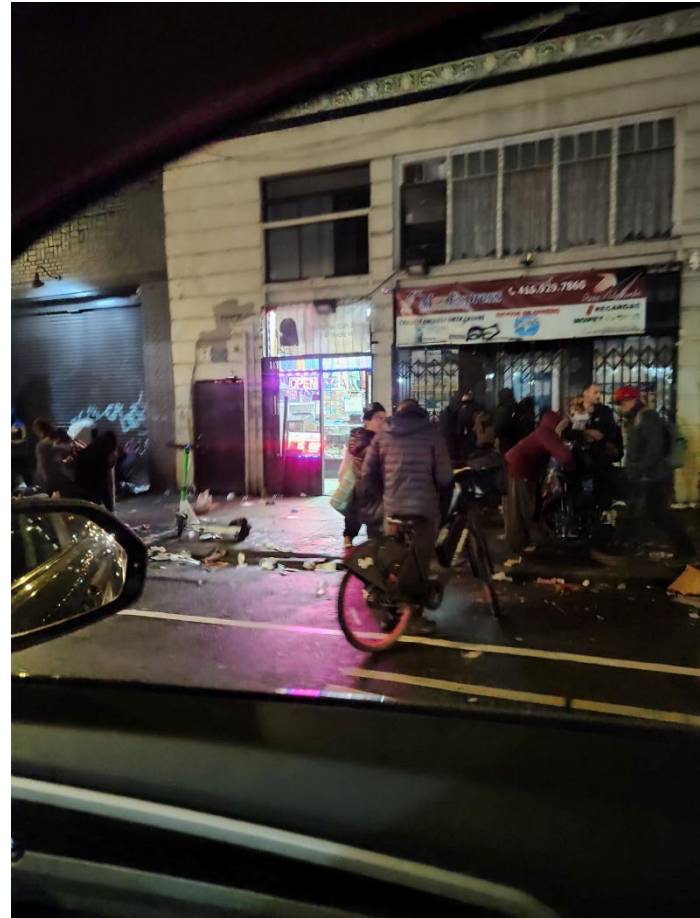
CITY & COUNTY OF SAN FRANCISCO

Police Department

June 17, 2024

Tenderloin Retail Hours Restriction Pilot Program

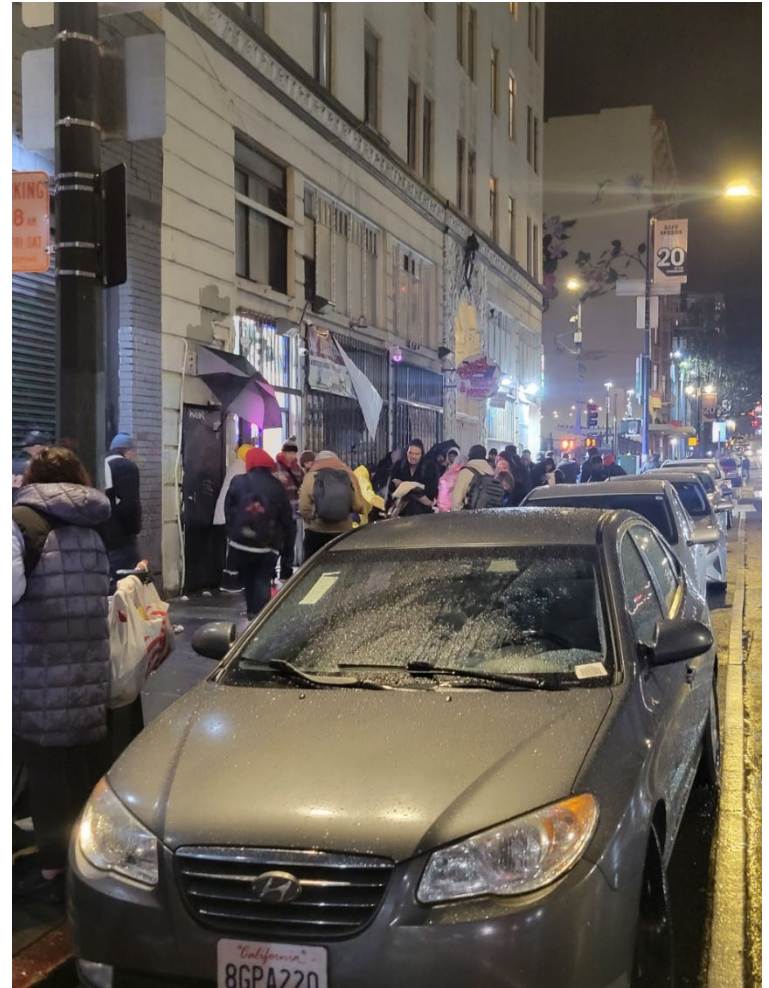
- Community driven/Police supported
- Restriction for operating hours for Nighttime Retail Food and Tobacco Establishments
 - 12:00 AM-5:00 AM
 - For a period of 2 years



Night Conditions

Observations

- Large-scale gathering in vicinity of open stores during late-night hours observed by community and scouting
- Challenges/Concerns associated with crowds:
 - Community - Quality of life, safety concerns
 - Public safety – Crime, City worker safety
 - Enforcement and investigative challenges



Night Conditions



Safety with Respect



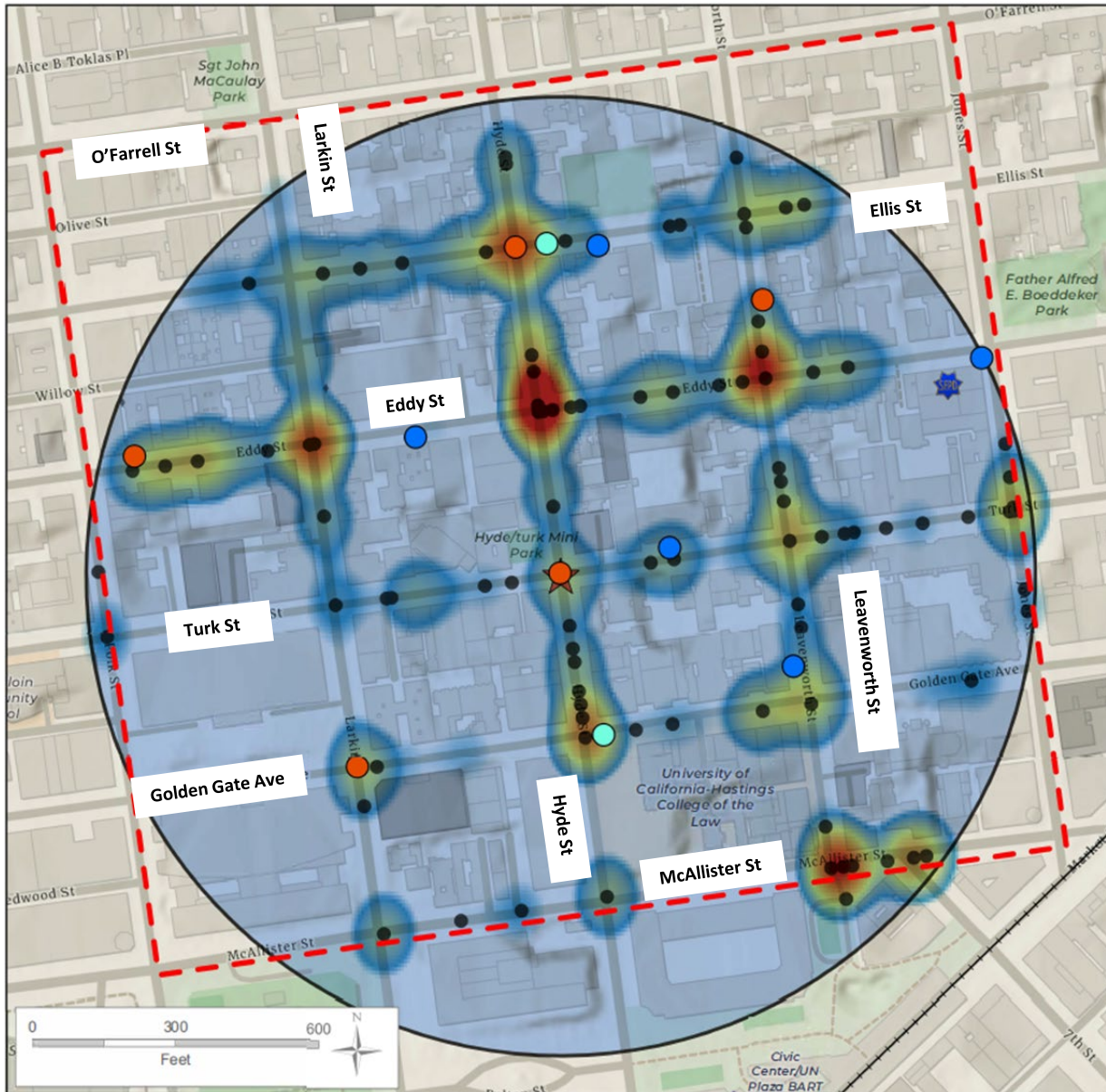
Tenderloin Night Conditions

Tenderloin Retail Hours Restriction Pilot Program

Ordinance Overview

- Prohibit certain retail stores from being open between 12 a.m. to 5 a.m. in select part of the Tenderloin
 - Pilot Program Term – Two Years
 - Investigation/Fine
 - SFPD – investigate and gather evidence
 - Department of Public Health (DPH) – Authority to impose administrative fine of up to \$1,000 per hour of violation based on SFPD evidence
 - Administrative solution not a penal code violation – no arrests
- Impacted Retail Stores – certain stores that sell prepacked food or tobacco products/devices. Does **NOT** apply to restaurants, bars, or other non-retail businesses.
- Limited to high crime area of Tenderloin – O'Farrell to McAllister, Polk to Jones

Safety with Respect



Incidents between 0000 - 0500 Hours

- Hyde & Turk Location
- Hyde & Turk Buffer 1,000 Feet
- Homicide (2)
- Non-Fatal Shooting 217 (5)
- Shooting 216 (5)
- Crime Type
 - All Assaults (114)
 - Narcotics (35)
 - Rape (4)
 - Robbery (31)
- All Crimes
- Density
 - High
 - Low
- Location
- SFPD District Station
- Elevated Freeway
- Surface Rail
- Muni/BART Entrance
- Parking Lot
- Notable Location
- Colleges & Universities
- Park

This map accurately reflects the information available in SFPD's Crime Data Warehouse/ Business Intelligence Tools at time of preparation.

Prepared by SFPD Crime Analysis Unit, 6/7/24

Outreach and Enforcement

Multi-Department outreach effort

- Began early: Office of Small Business (OSB) went door-to-door doing temperature check between Feb. 23 – March 21
- Will take a little time for departments to draft and implement policies
- Planned continued community outreach and education
 - DPH multi-lingual mailers
 - OSB community education

San Francisco Department Public Health is the lead enforcement department

- 1) DPH issues Notice of Violation
- 2) A Director's Hearing is held
- 3) Hearing Officer Determines Penalties

Tenderloin Retail Hours Restriction Pilot Program

Expected Results

A safer and healthier environment by reducing crowds and illegal activity.

1. Reduce unsafe conditions that cause community fear and insecurity
2. Reduce risk factors to public, law enforcement, City staff, and others
3. Reduce accumulation of unsanitary and unsafe debris and waste
4. Reduce criminal activity