



San Francisco
Water Power Sewer
Services of the San Francisco Public Utilities Commission

SFPUC
Regional Groundwater Storage and Recovery Phase 2B
Pipeline Easement Acquisition
South San Francisco

September 4, 2024
Dina Brasil, Right-of-Way Manager, Real Estate Services

Groundwater Phase 2B Project Summary

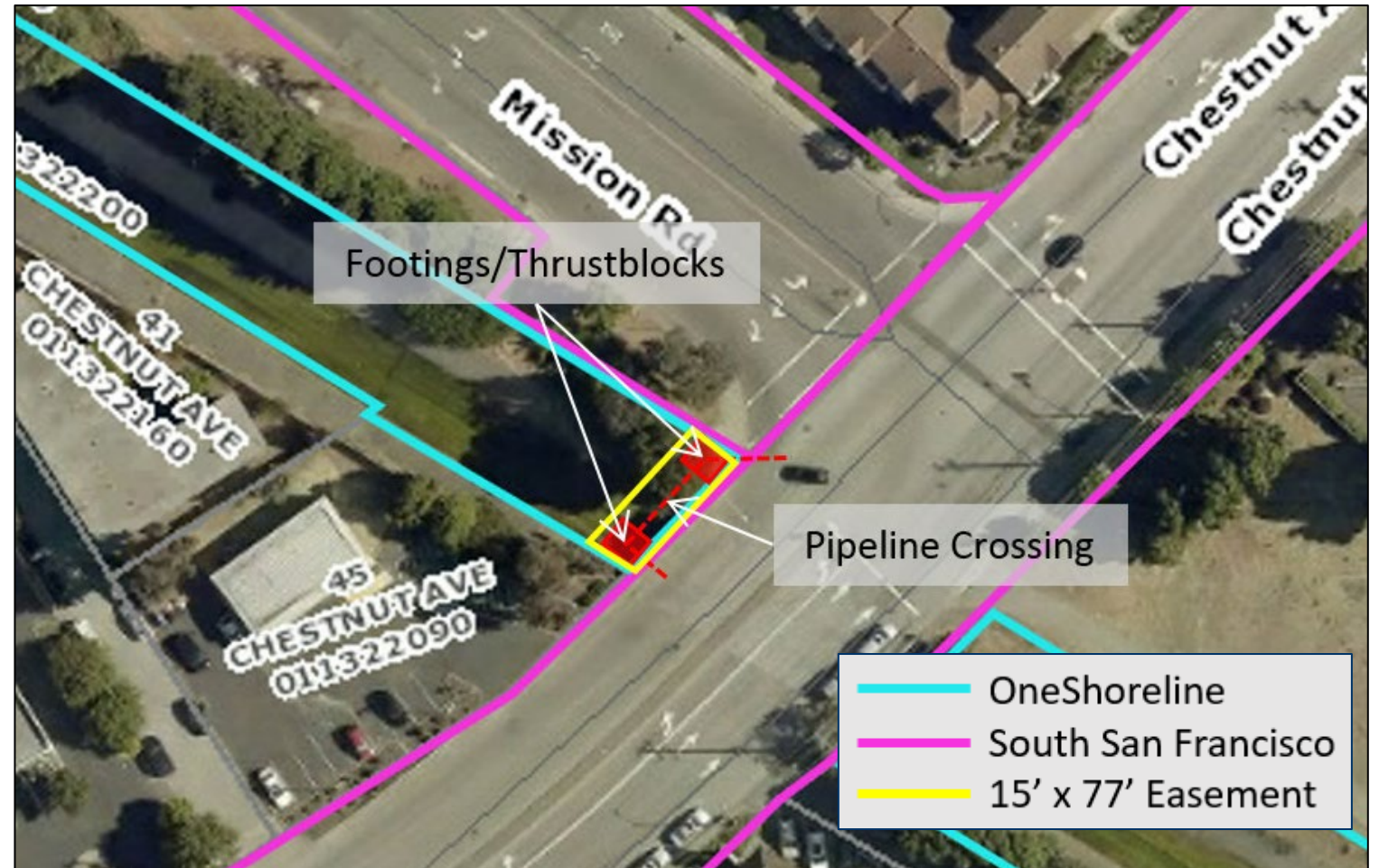
- Install a groundwater pump system at the South San Francisco Main Well site.
- Install groundwater pipeline within El Camino Real and Chestnut Avenue to transport groundwater to Cal Water's groundwater treatment plant.



Chestnut Avenue at Colma Creek

Easement Details:

- Purpose: A perpetual easement for pipe footings and an aerial water pipeline crossing.
- Location: An approximately 1,386-square-foot portion of Assessor's Parcel 011-322-200.



Transaction Details

- **Parties to the Agreement:**
 - City and County of San Francisco, acting through the SFPUC, and the San Mateo County Flood Control and Sea Level Rise Resiliency District (also known as OneShoreline).
- **Purchase Price:**
 - \$70,000 (equal to the appraised value).
- **Additional Costs:**
 - Regular closing costs.



San Francisco
Water Power Sewer
Services of the San Francisco Public Utilities Commission

Questions?