

LATINX COMMUNITY STRATEGY FOR COVID-19

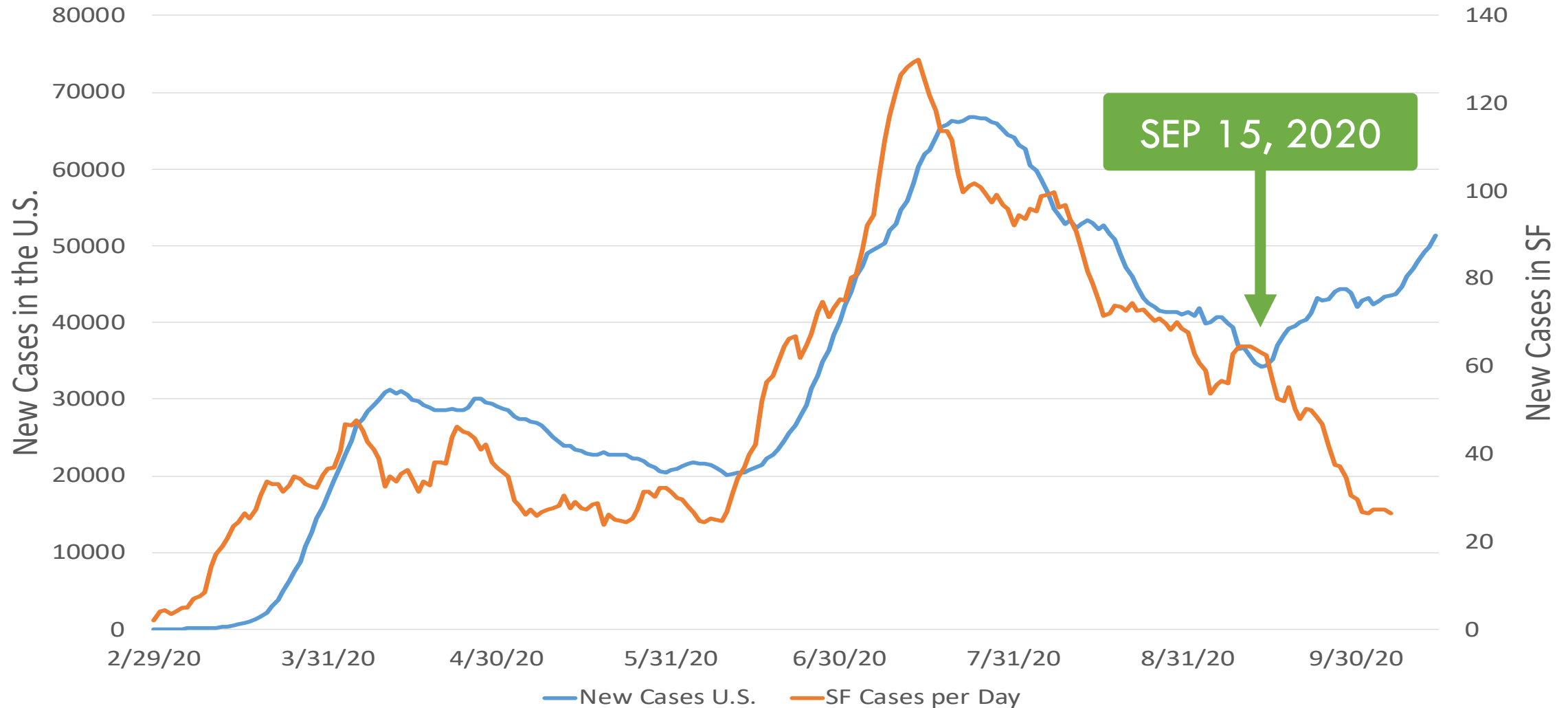
October 22, 2020



ISELA FORD, MPA
NAVEENA BOBBA, MD
SAN FRANCISCO DEPARTMENT OF PUBLIC HEALTH



NEW COVID CASES OVER TIME – SAN FRANCISCO vs UNITED STATES





OVERVIEW

- San Francisco has been successful in responding to the COVID-19 pandemic
 - **one of the lowest death rates** in the United States
 - **highest testing rate** in the Bay Area and compared to major cities
- Early on DPH **focused on congregate living settings** with the highest risk of transmission
- With increased availability of testing and greater reopening, we have learned that COVID-19 has **disproportionally impacted the Latinx community** in San Francisco and across the United States
 - 49.6% of COVID-19 cases in San Francisco are among Latinx
 - 25% of deaths in San Francisco are Latinx
- DPH is partnering with the Latinx community to develop a **community-led COVID19 Response and Recovery Latinx Strategy** (to be completed Dec. 2020)



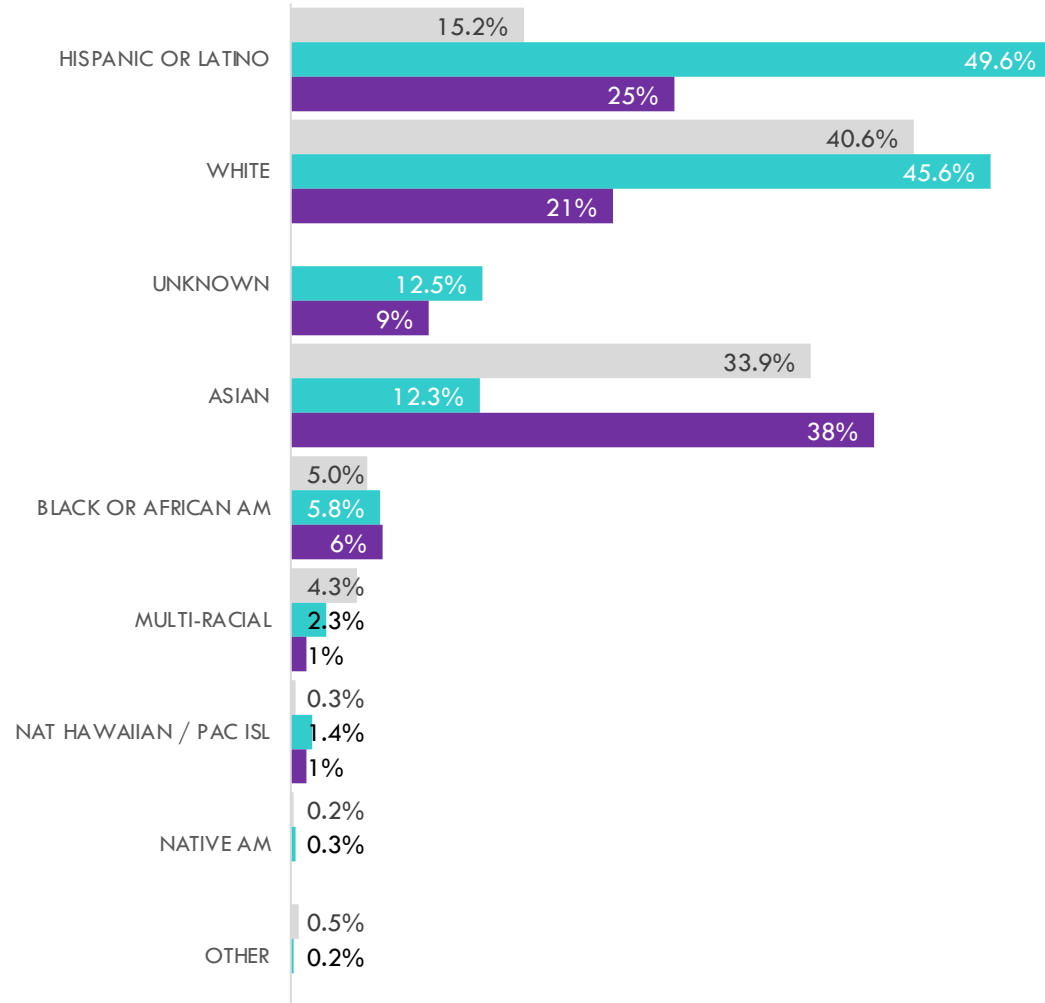
COVID-19 BY THE NUMBERS – AS OF 10/21/20

POPULATION

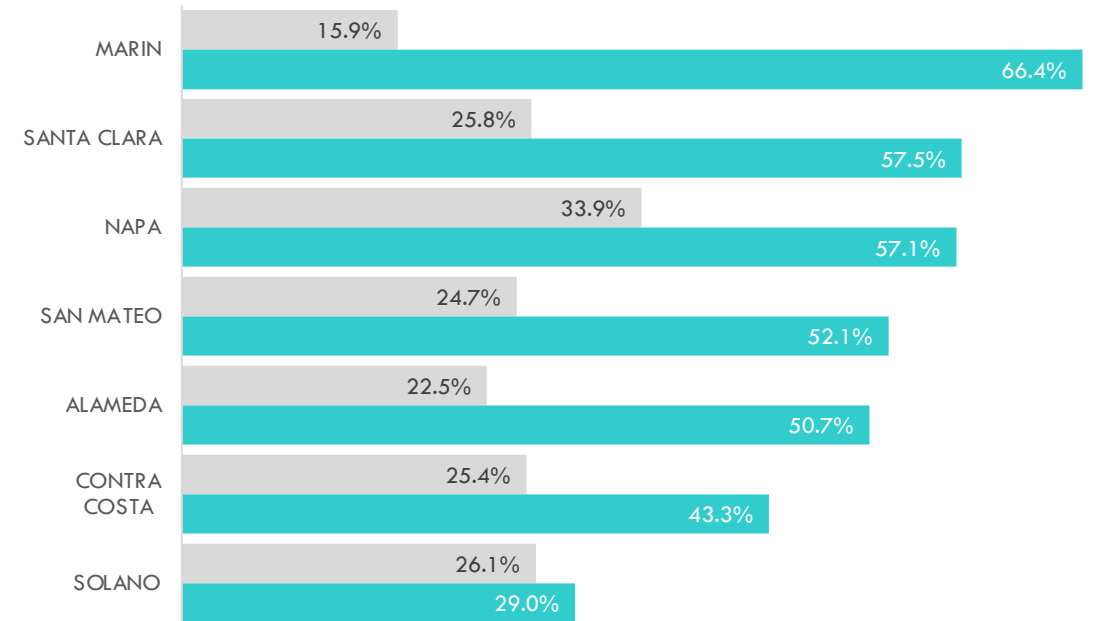
CASES

DEATHS

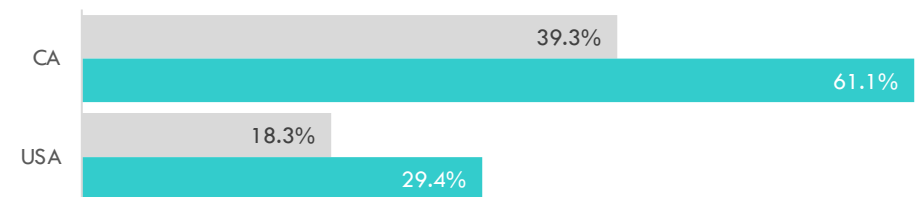
SAN FRANCISCO



BAY AREA – LATINX



CA & USA – % LATINX







DRIVERS OF THE EPIDEMIC – THREE C's

Living and working conditions are associated with risk and transmission in the community

There are certain places where COVID-19 spreads more easily:

- 

1
Crowded places
with many people nearby
- 

2
Close-contact settings
Especially where people have close-range conversations
- 

3
Confined and enclosed spaces
with poor ventilation



DPH LATINX FOCUSED EFFORTS

- 36% of COVID-19 spending directed to serve Latinx individuals
- Ensuring COVID-19 response addresses linguistic and cultural needs of Latinx
- Low barrier community testing for essential workers and families, in partnership with community
- Partnerships with the Latino Task Force and SF Latino Parity & Equity Coalition
- Provided staffing and testing during both days of Carnaval
- Prioritized goal for Spanish-speaking CI/CT workforce



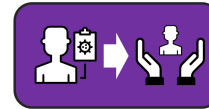


COVID-19 INVESTMENTS & STRATEGY - LATINX COMMUNITY

- Mayor Breed invested **\$28.5 million** in expanded COVID-19 support for the city's Latinx Community.
- DPH is investing **\$7.3 million** to support COVID-19 response efforts in the Latinx community.



ESSENTIAL SERVICES HUBS
(\$3 million)



TEST-TO-COMMUNITY CARE
SERVICES (\$1.5 million)



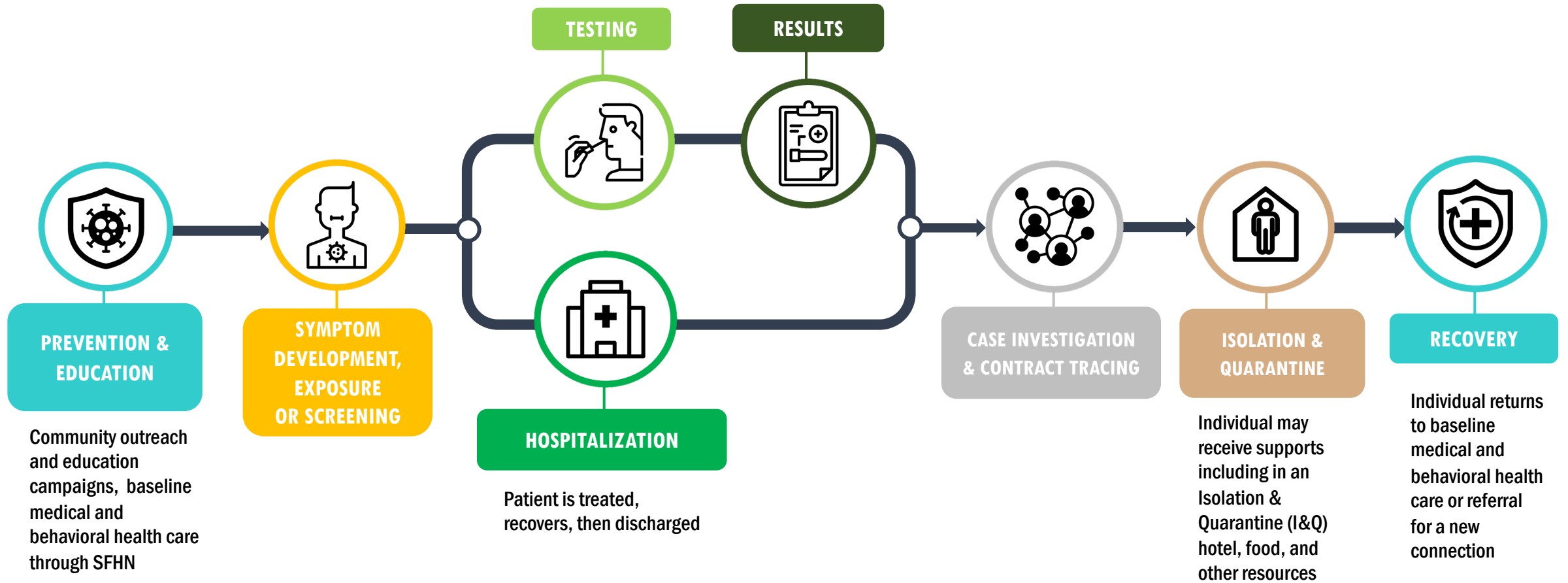
COMMUNITY CONTRACT TRACING
(\$1.25 million)



PRIMARY CARE & BEHAVIORAL
HEALTH (\$1.5 million)



COVID CARE CONTINUUM





PREVENTION & EDUCATION



Hágase La Prueba Del Covid-19 GRATIS!

**Todos los jueves
10am - 3pm
701 Alabama (Entre las calles 19th & 20th)**

Venga los jueves y puede hacerse la prueba o puede hacer la cita para la proxima semana.

¡Juntos Podemos Vencer al Coronavirus!

Una colaboración del Latino Task Force-Covid 19, la comision de los derechos humanos y el departamento de salud de la ciudad de San Francisco.

LTFrespuestalatina.com

El Amor Se Demuestra Con Acciones

Mantener seis pies de distancia

Usando una mascarilla

Evitar compartir comida

Actions Speak louder than words
Maintain 6ft distance | Wear a face mask | Avoid Sharing Food

La Familia Contra COVID-19
sf.gov/unidosCOVID19





Usa Tu Cubrebocas Correctamente

Siempre cúbrete la nariz y la boca completamente. Asegúrate de que quede bien ajustado a los lados de tu cara.

Wear your face covering correctly
Always cover your nose and mouth completely. Make sure it fits snugly against the sides of your face.

La Familia Contra COVID-19
sf.gov/unidosCOVID19







TESTING: MAR 1 – SEP 30, 2020

- DPH moved testing resources to the communities with the highest rates of COVID-19 infection.
- The proportion of Latinx residents tested differ by testing site.

TYPE	SITE	TOTAL TESTED	LATINX	
			TESTED	%
POP-UPS	MISSION HUB	1,468	1,143	78%
	EXCELSIOR	500	317	63%
	POTRERO	99	33	33%
	BAYVIEW	734	186	25%
	GLIDE-TENDERLOIN	640	150	23%
	SUNNYDALE	196	41	21%
	OCEANVIEW/ MERCED/INGLESIDE HEIGHTS	609	126	21%
FIXED	EMBARCADERO	136,169	23,618	17%
	SOUTH OF MARKET	39,862	6,894	17%



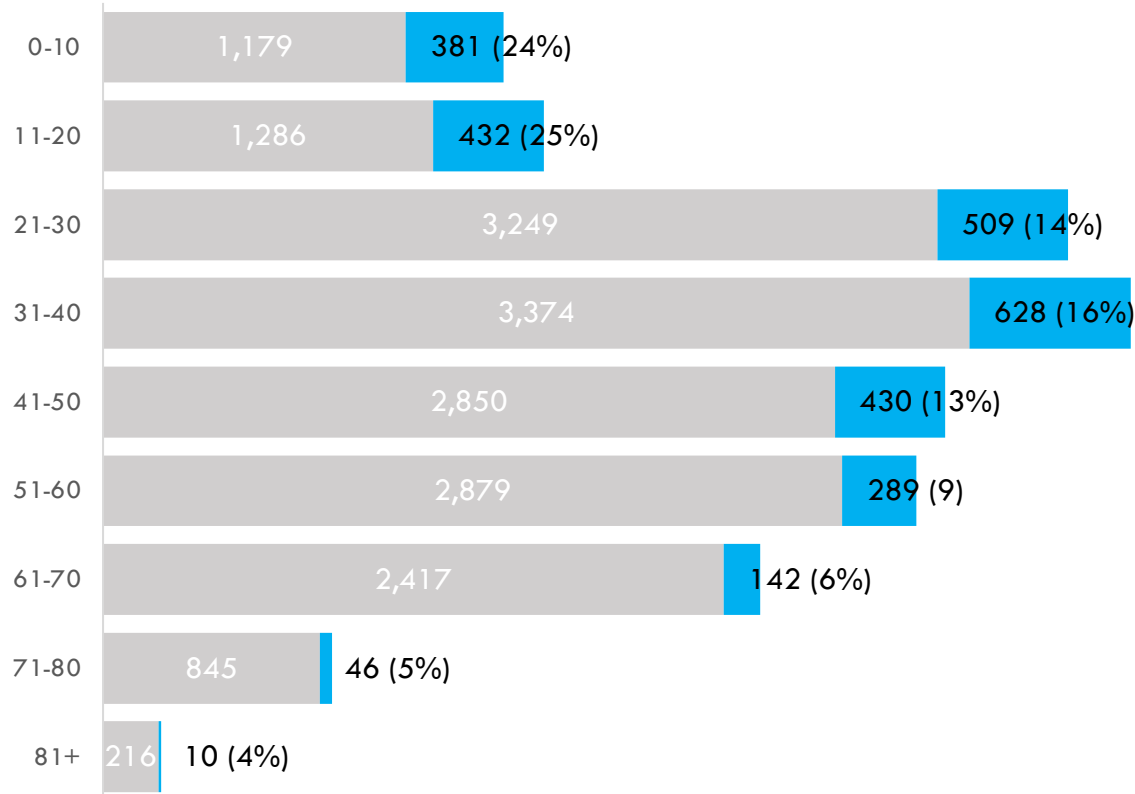
TESTING HIGHLIGHTS

- **JUL 2020** – In partnership with the Latino Task Force, launched a COVID-19 testing site at the Latino Task Force (LTF) Resource Hub in the Mission (701 Alabama)
- **AUG 2020**- Launched community pop up testing sites through mobile testing assets
- **NOV 2020** – DPH is moving CityTest SF SOMA into a new site in the Southeast in the parking lot of the Alemany Farmers Market (capacity of 500 tests/day)

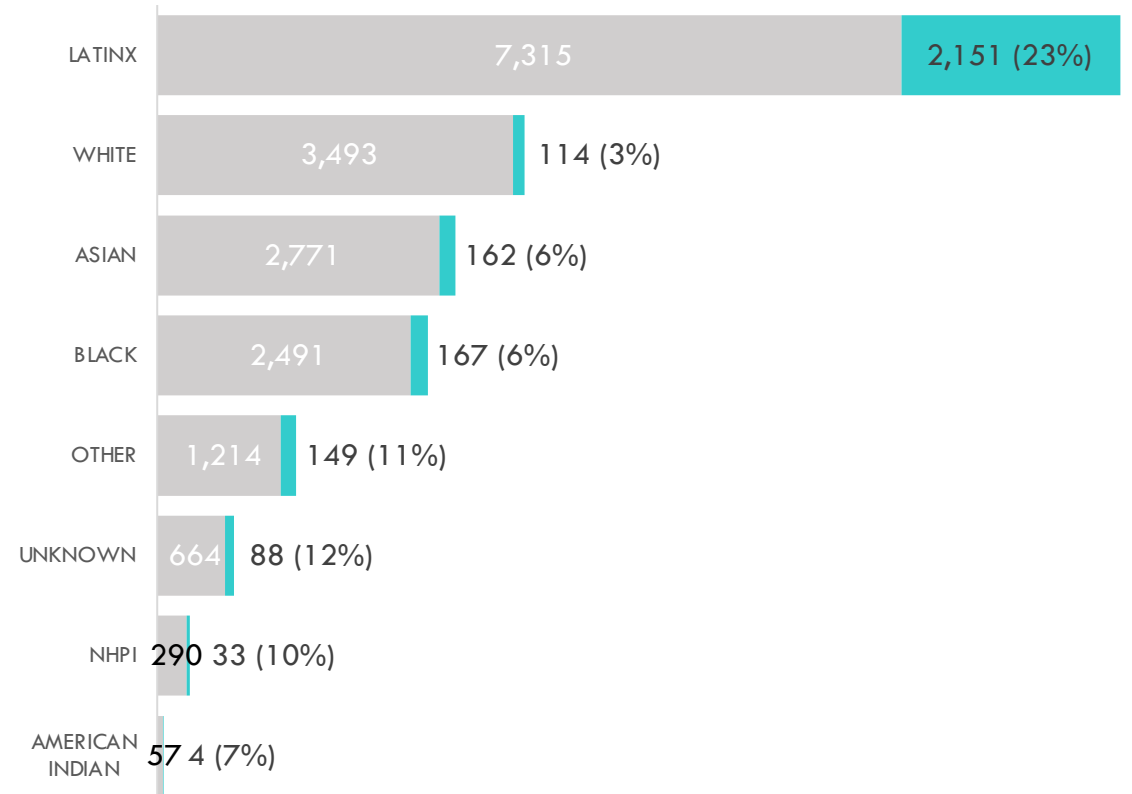


TESTING AT DPH HEALTH CENTERS (3/6/20 – 9/30/2020)

AGE RANGE OF UNIQUE CLIENTS AT ATS LOCATIONS



CLIENT RESULTS BY ATS LOCATIONS BY RACE



Notes: Data from Slicer Dicer in Epic on 10/2/2020 had 98.9% tests resulted; unduplicated records shown. Native Hawaiian or Other Pacific Islander is abbreviated as NHPI, Native American includes Alaskan Natives



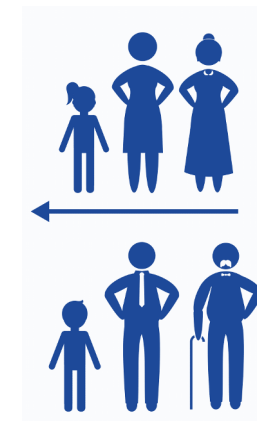
CASE INVESTIGATION/CONTACT TRACING

Successfully interviewed 90% of all Latinx cases.



Majority who tested positive also:

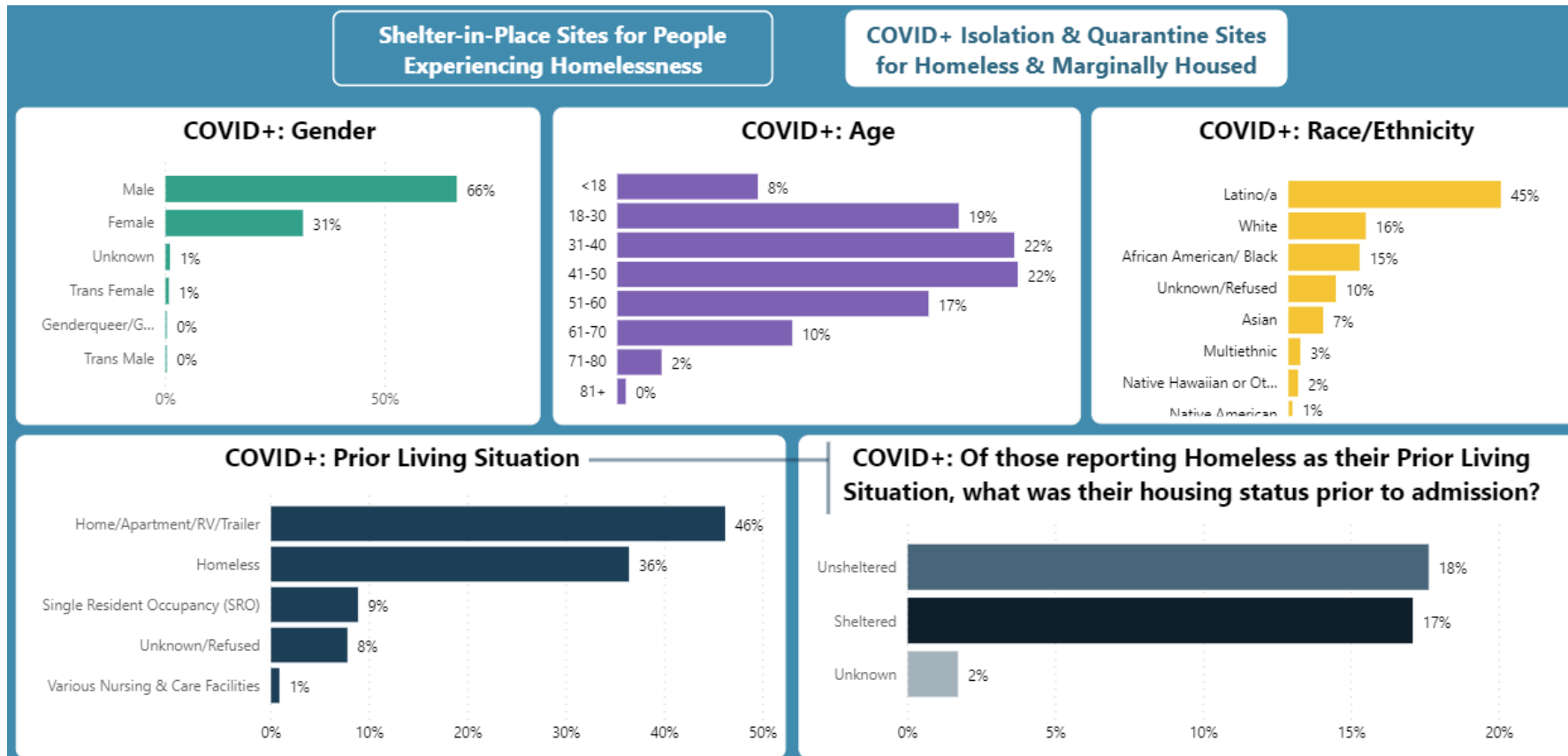
- preferred to speak Spanish
- more likely to be younger
- more likely to live in a household greater than 5 persons





ISOLATION & QUARANTINE SITES: RESIDENTS BY RACE/ETHNICITY – AS OF 10/21/20

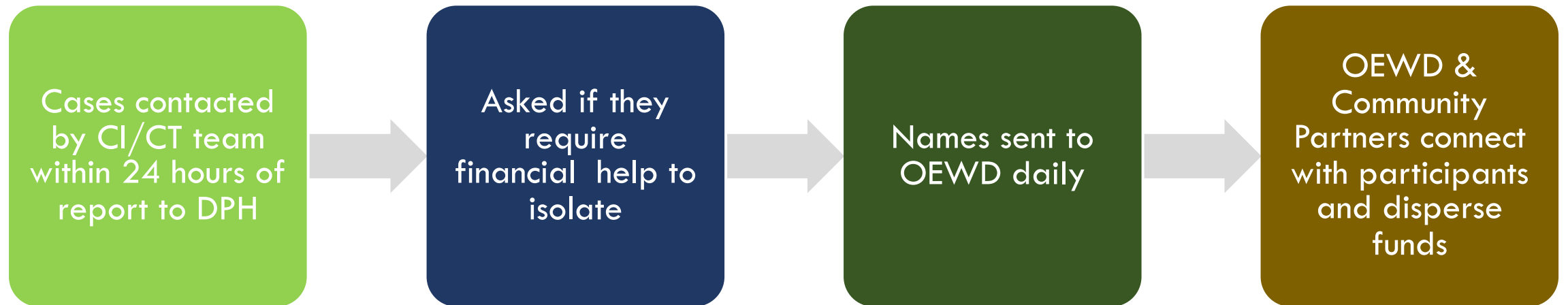
Residents who identify as Latinx are nearly half of all individuals staying at I&Q sites.





RECOVERY

Right to Recover Program provides financial support to allow workers who test positive to stay in isolation





NEXT STEPS

- City investments are a critical resource for community efforts that started early on during the pandemic
- Co-create with community a COVID-19 strategy in the Latinx community that focuses on the response and recovery
- Creating performance metrics to focus on aspects of the continuum
- Maintaining Right to Recover to enable safe self-isolation in the community



THANK YOU

COMMUNITY PARTNERS

- Calle 24 Community Council
- Dolores Street Community Services
- GLIDE
- Good Samaritan Family Resource Center
- Instituto Familiar De La Raza
- Mission Economic Development Agency (MEDA)
- Mission Neighborhood Health Center (MNHC)
- Rafiki Coalition
- San Francisco AIDS Foundation
- San Francisco Community Health Center
- Shanti Project
- The Latino Task Force
- UCSF Alliance Health Project
- YMCA