



Alternatives to Incarceration

December
2015

Current and Planned

SUBMITTED + PRESENTED 12/3/15
FILE NO. 15120D



Current Pre-Booking and Pre-Adjudicated Diversion Alternatives

Medical Respite and Sobering Center

1171 Mission St., San Francisco
Medically oriented support for medically fragile individuals including inebriated and/or otherwise challenged.

Dore Urgent Care

52 Dore St., San Francisco
Urgent care clinic serving those with an escalating psychological crisis which, if not immediately addressed, may result in involuntary detention or hospitalization.

Behavioral Health Access Center

1380 Howard St., San Francisco
Assessment and triage for persons seeking access to behavioral health services in San Francisco.

Community Justice Center (CJC)

555 Polk St., San Francisco
Community court and service venue for pre-adjudicated misdemeanor and felony offenders within a defined neighborhoods.

Drug Court

509 6th St., San Francisco
Longstanding pre-adjudicated effort for suitable offenders with substance use disorders.

Behavioral Health Court (BHC)

850 Bryant St., San Francisco
Treatment access for eligible and suitable offenders who present as seriously mentally ill.



Planned Pre-booking Diversion Program – ABLE

Assistance
Before
Law
Enforcement

Alternatives to Incarceration



Building upon Seattle's Successful LEAD Program

Overview

- Directs eligible low-level drug offenders to mental health or substance abuse treatment opportunities prior to arrest

Philosophy

- A wellness, recovery, and restorative approach to providing appropriate care to a vulnerable population

Goals

- Provide seamless access to services, as appropriate
- Minimize further interaction with law enforcement
- Reduce recidivism
- Facilitate successful community reintegration

Geographic Focus

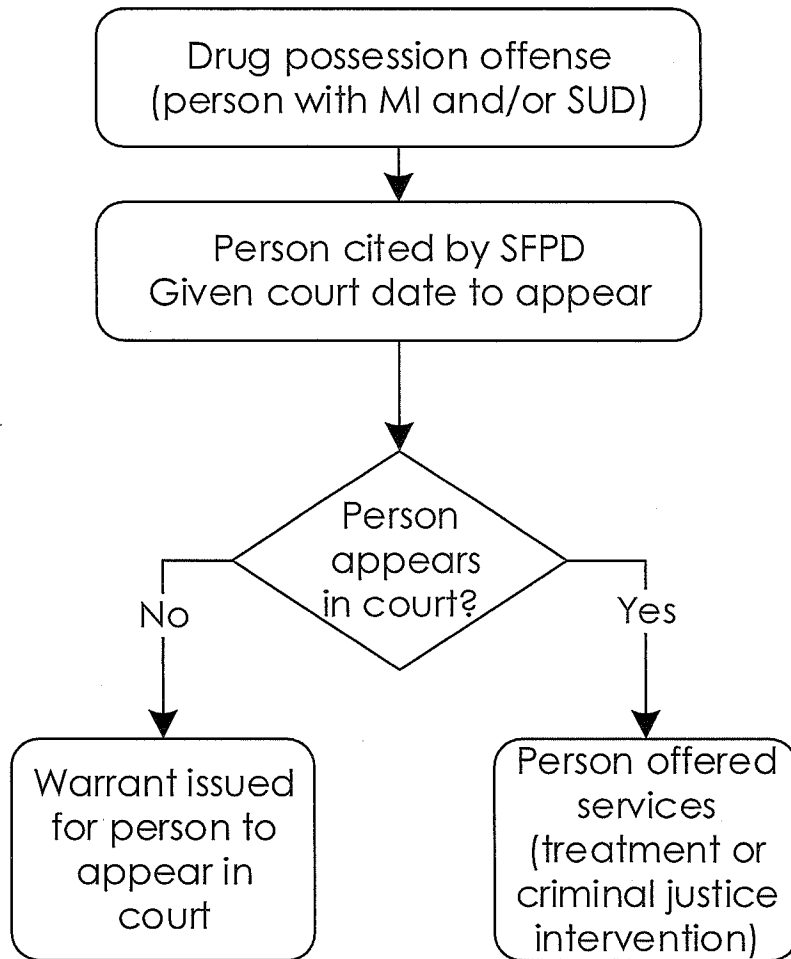
- To be implemented in the Tenderloin, based on drug offense arrest data from the San Francisco Police Department
- Based at 1171 Mission St (currently houses Sobering Center and Medical Respite)

Key Components

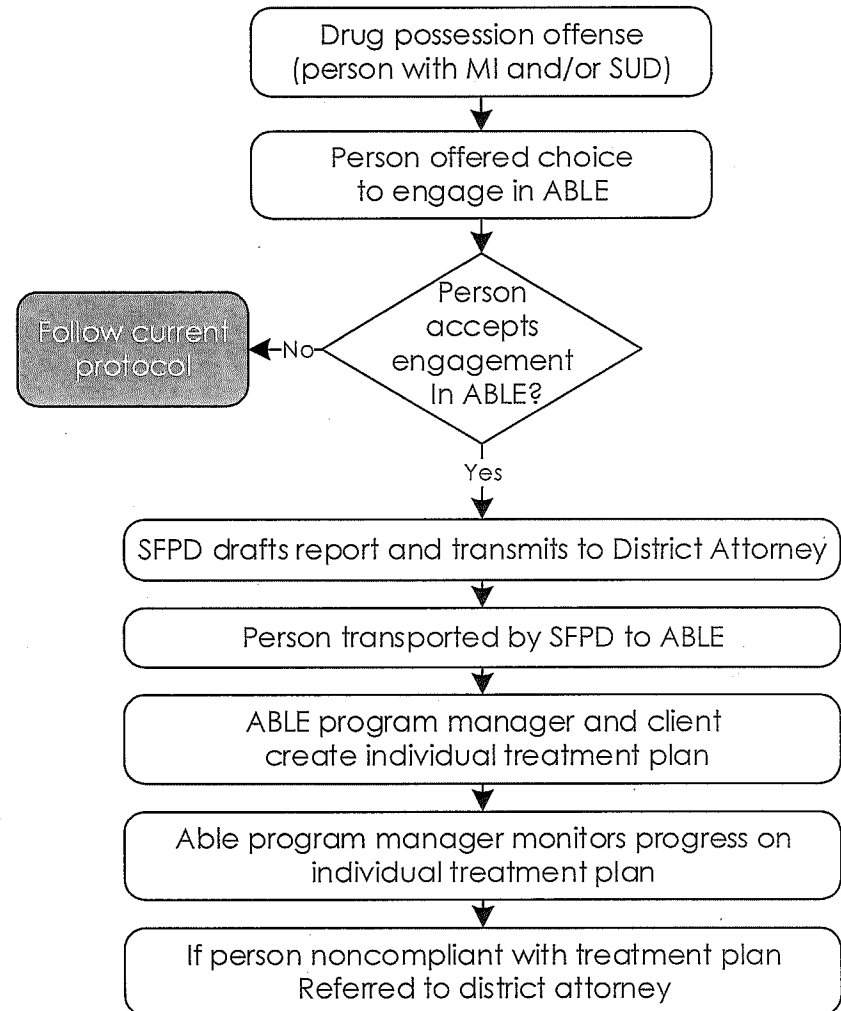
- Psychiatric social worker to serve as ABLE program manager
- Dedicated clinician time allocated to ABLE
- SFPD CIT training

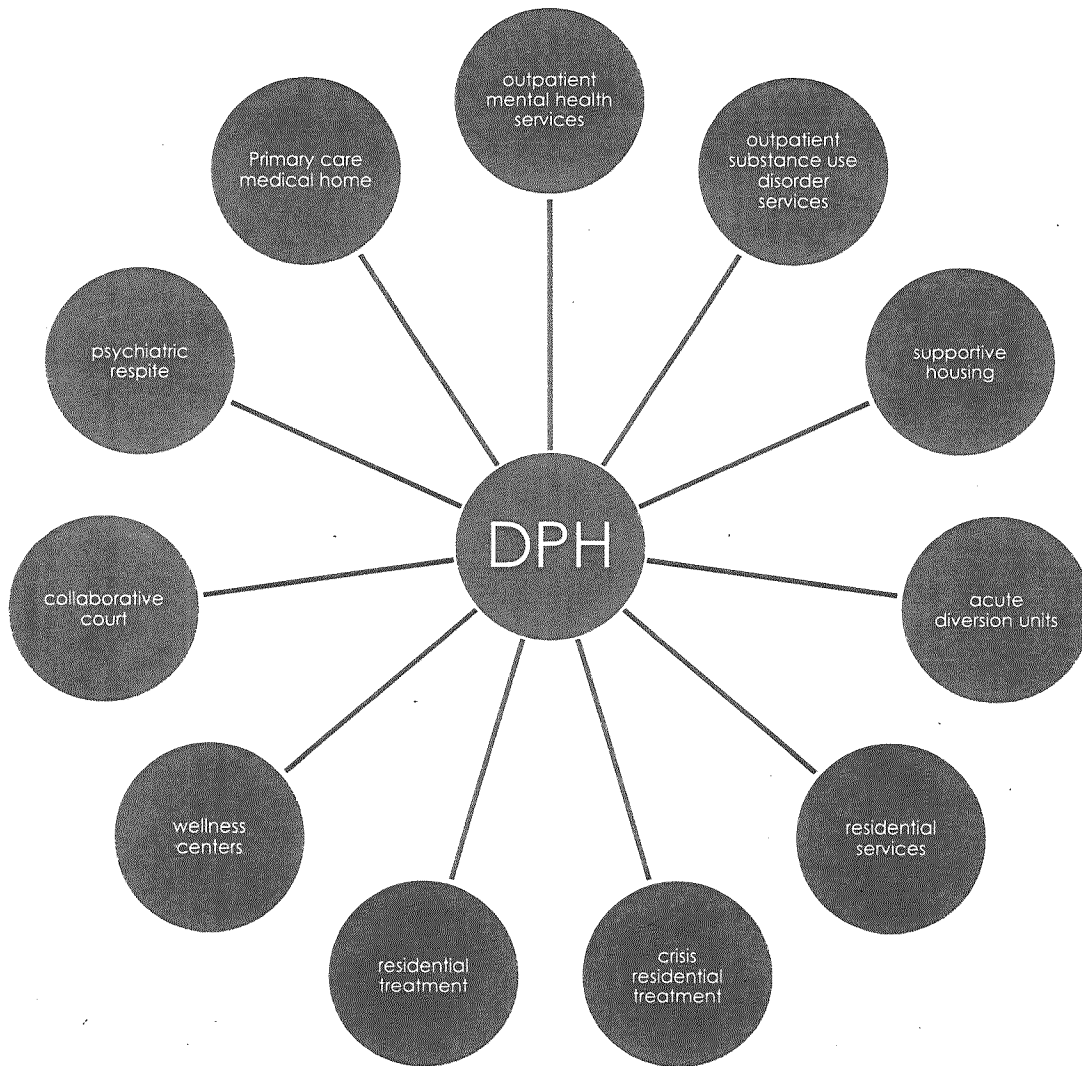
Pathway

Current Protocol



ABLE Protocol





ABLE is connected to SFDPH's larger system of coordinated behavioral health care



DPH Current Behavioral Health Funding

- Mental Health Serviced \$290 M
- Substance Abuse \$75 M
- Housing \$40M

47 Bed Psychiatric Respite that will provide transitional housing and comprehensive mental health and substance abuse services for individuals being discharged from jail and collaborative court programs.

Projected to be operational by FY17-18.

Capital Cost is \$1.5M – Annual operating budget is approximately \$7M.