



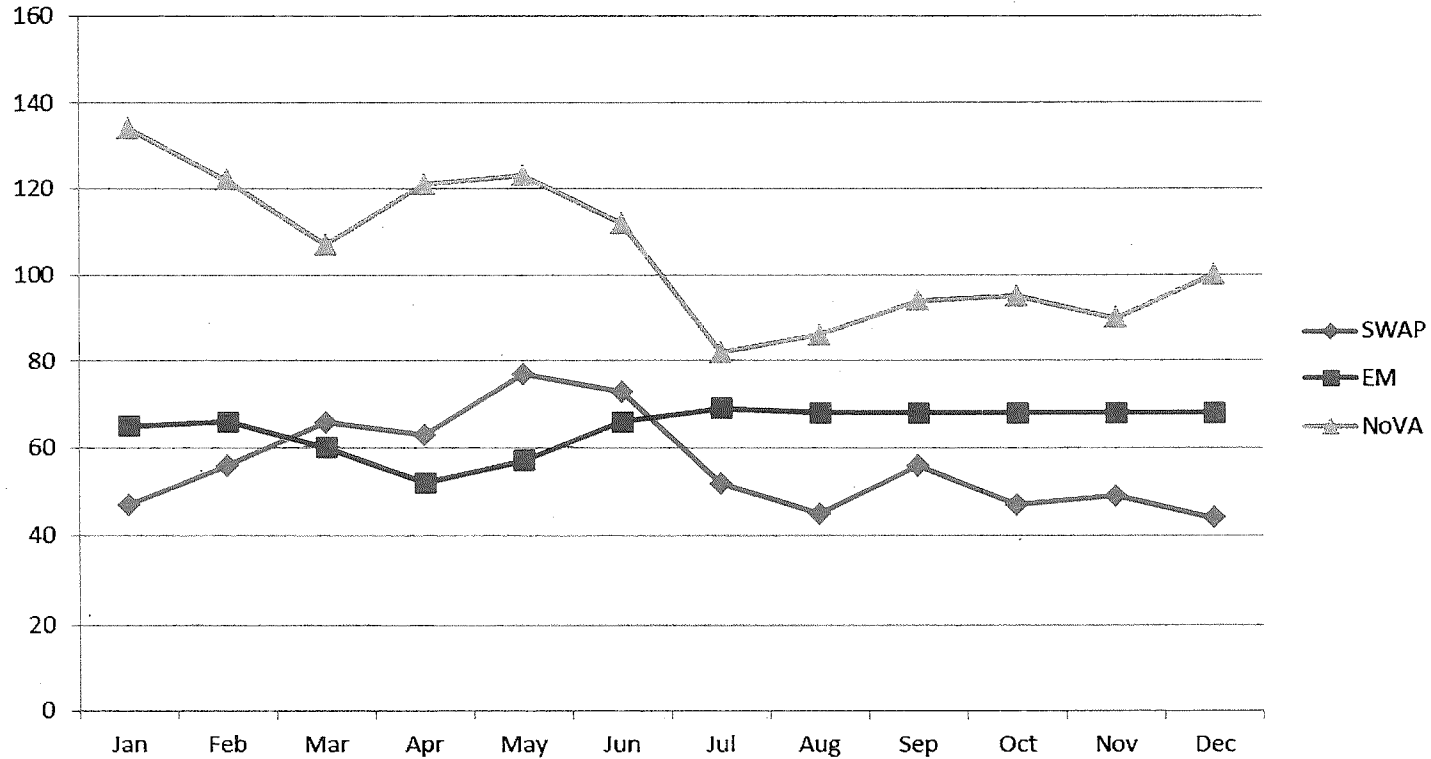
PRE-TRIAL RELEASE PROGRAMS

- Own Recognizance (OR)
- Supervised Pre-Trial Release (SPR)
- Court Accountable Homeless Services (CAHS)

SUBMITTED + PRESENTED 12/3/15
FILE NO. 151200



2014 COMMUNITY PROGRAMS & ALTERNATIVES

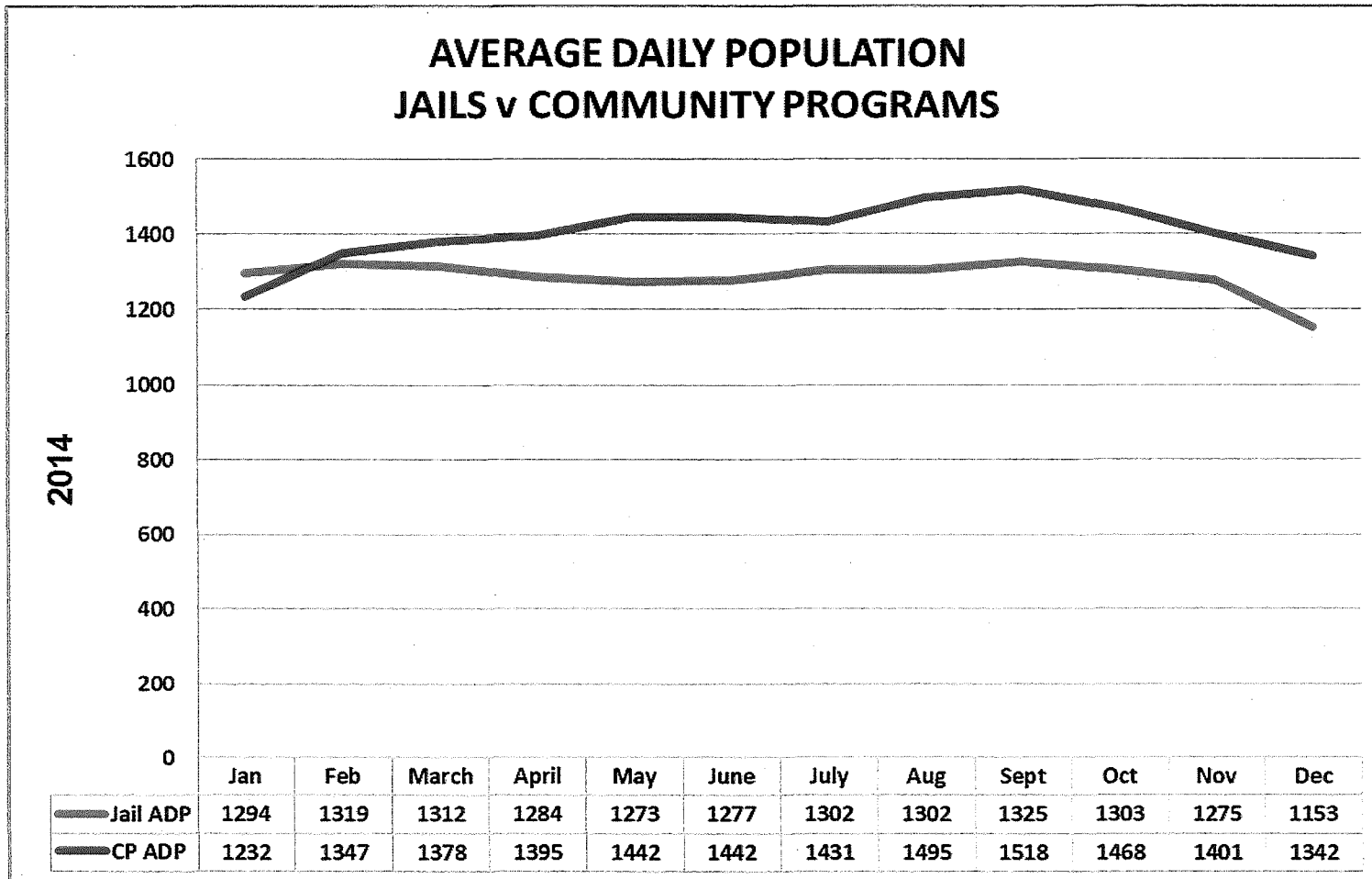


AVERAGE DAILY POPULATION

SWAP: 56 EM: 68 NoVA: 106



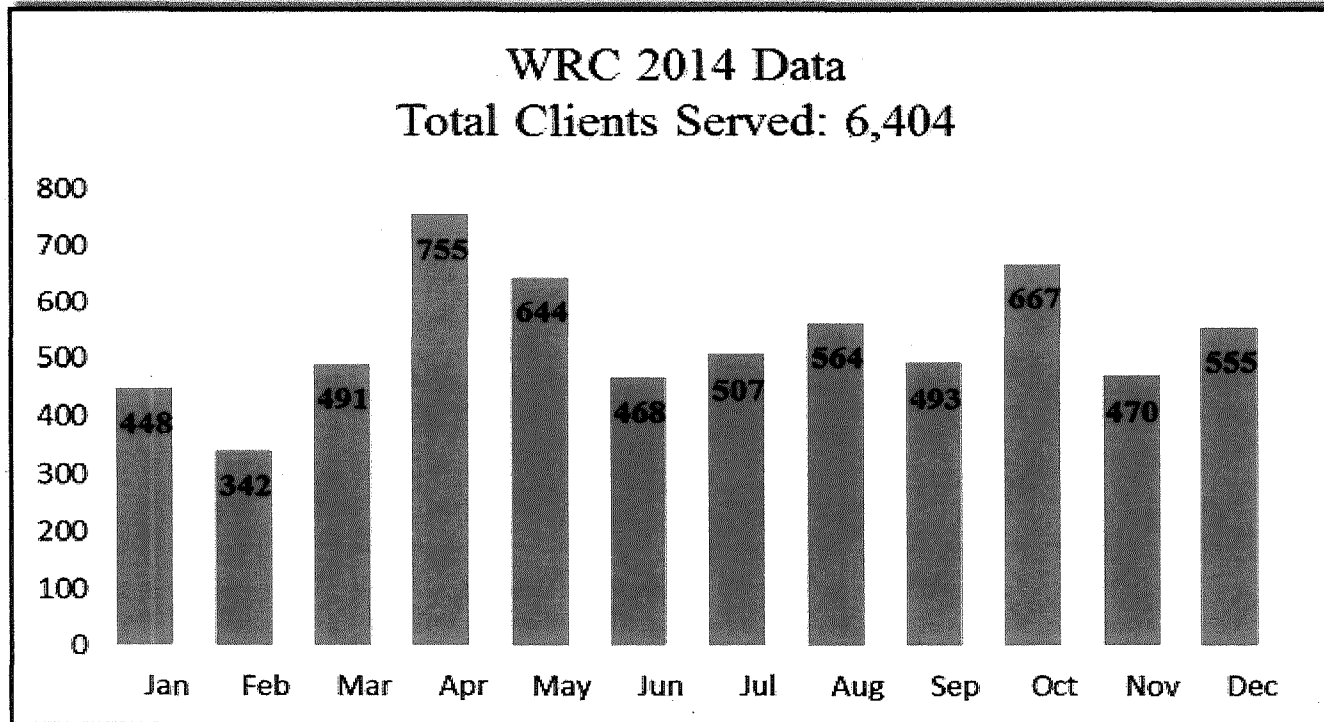
AVERAGE JAIL POPULATION & AVERAGE COMMUNITY PROGRAMS POPULATION 2014





WOMEN'S RESOURCE CENTER (WRC)

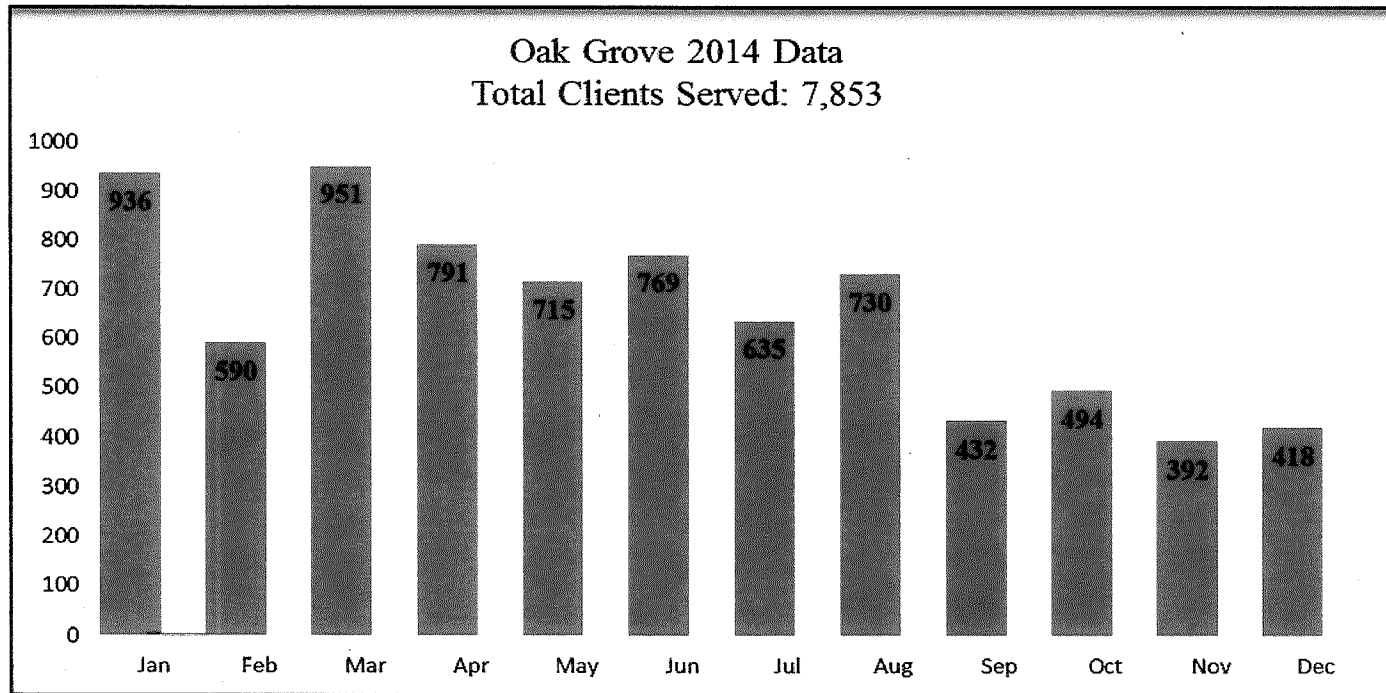
The purpose of the center is to provide women who have a history of criminal justice involvement with the services necessary to achieve and maintain safe and healthy lifestyles.





70 OAK GROVE

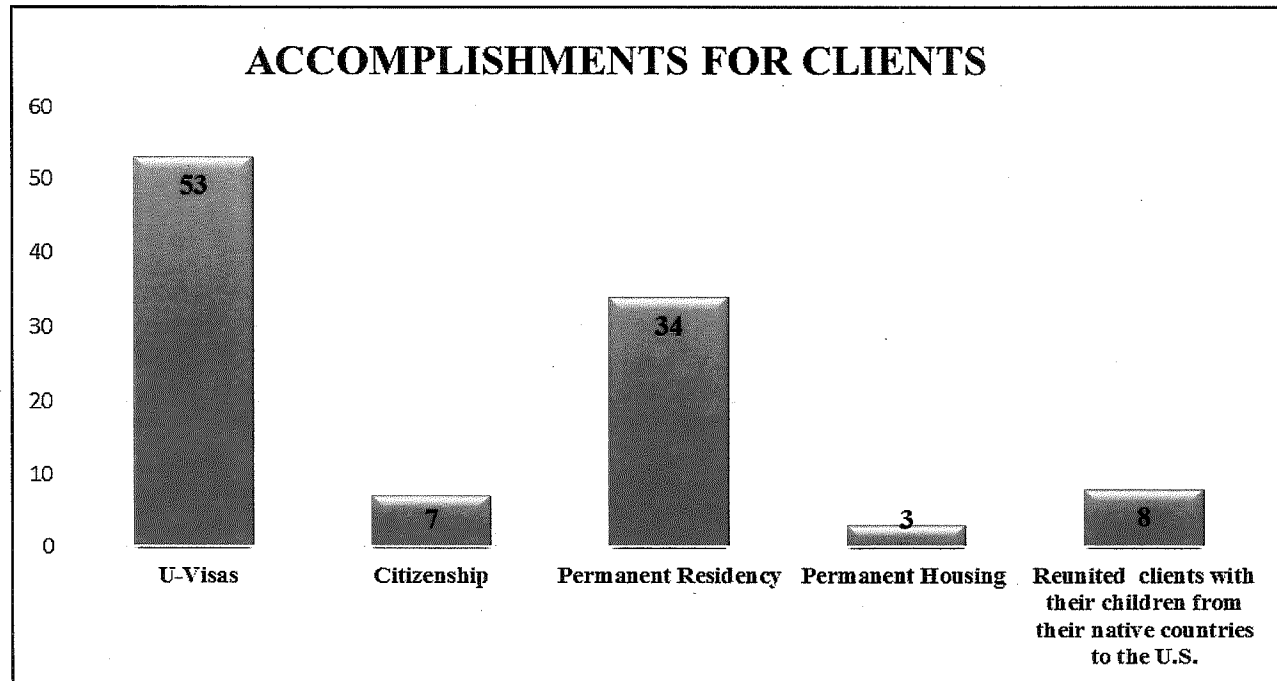
Programs at 70 Oak Grove Street include: Five Keys Charter High School, Batterer's Intervention and other groups such as anger management, substance abuse, parenting, and Thinking for a Change.



SURVIVOR RESTORATION PROGRAM (SRP)

SFSD's Survivor Restoration Program has continued to provide advocacy and direct services to the survivor community for over 15 years.

- During Fiscal Year 14/15: 153 new clients
- Case management services for 791 ongoing open cases





NEW INITIATIVES

MENTALLY ILL OFFENDER CRIME REDUCTION GRANT

- \$950,000 from Mentally Ill Offender Crime Reduction (MIOCR) Grant

Purpose of MIOCR grant program

- Support prevention, intervention, supervision, services and strategies to reduce recidivism in SF's mentally ill offender population
 - Improve outcomes for these offenders while continuing to protect public safety
-
- Provides transitional housing and peer specialist support through a collaboration with community-based agencies designed to reduce recidivism and to increase public safety
-
- Eligibility for participation determined by the Misdemeanor BHC
 - Engage offenders with mental illness in treatment with supportive housing and peer support



SAN FRANCISCO
SHERIFF

PUBLIC SAFETY ASSESSMENT PRETRIAL RELEASE TOOL

Validated pretrial tool based on research that has been commissioned by the Laura and John Arnold Foundation on how to best predict pretrial risk.

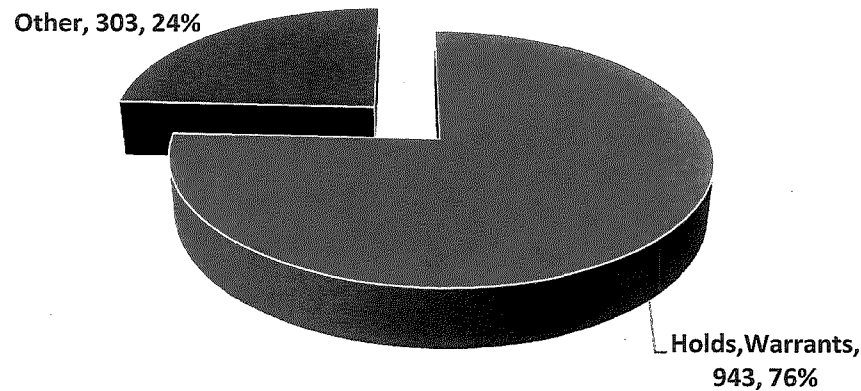
Focuses on 3 areas for pretrial assessment

Future Failure to Appear
Future Criminal Act
Risk of New Violent Crime



CHALLENGES TO PRETRIAL RELEASE

Total Population August 10, 2015 - (1246)

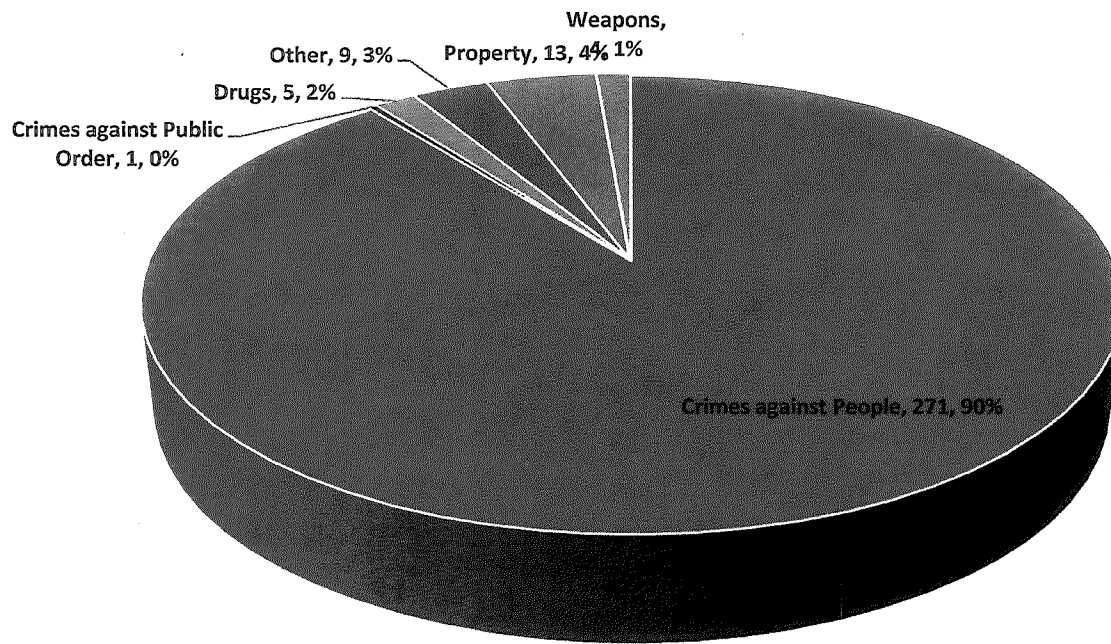


The San Francisco jail and other forms of correctional control (probation, parole, prison and jail) are well below the rates for California and the U.S. ... This historic effort has also served to harden the residual jail population which is changing the number and type of prisoners to be housed.

James Austin, Ph. D. JFA Institute

CHALLENGES TO PRETRIAL RELEASE

Crime Category (as booked)- In-custody Reviewed Population





SAMPLE OF ELECTRONIC MONITORING DENIALS and RETURN TO CUSTODY

Charges	Basis for Denial / Return
Attempted murder, mayhem, assault w/deadly weapon	Attacked victim w/machete - Denied
Robbery, assault w/deadly weapon	Removed EM device while out on previous EM release - Denied
Stalking, terrorist threats	Pattern of violating court orders, stalking - Denied
Possession of child pornography	Possession of >2000 pornographic images of pre-pubescent children engaged in BDSM - Denied
Robbery, assault, carrying concealed firearm	No bail juvenile warrant, validated gang member - Denied
Manslaughter, assault w/deadly weapon, gang enhancement	Nature of charges, validated gang member - Denied
Possession for Sale / Poss of Controlled Substance	Tested positive for cocaine/Remanded into custody from Court
Possession for Sale	Tested positive for meth / Remanded into custody