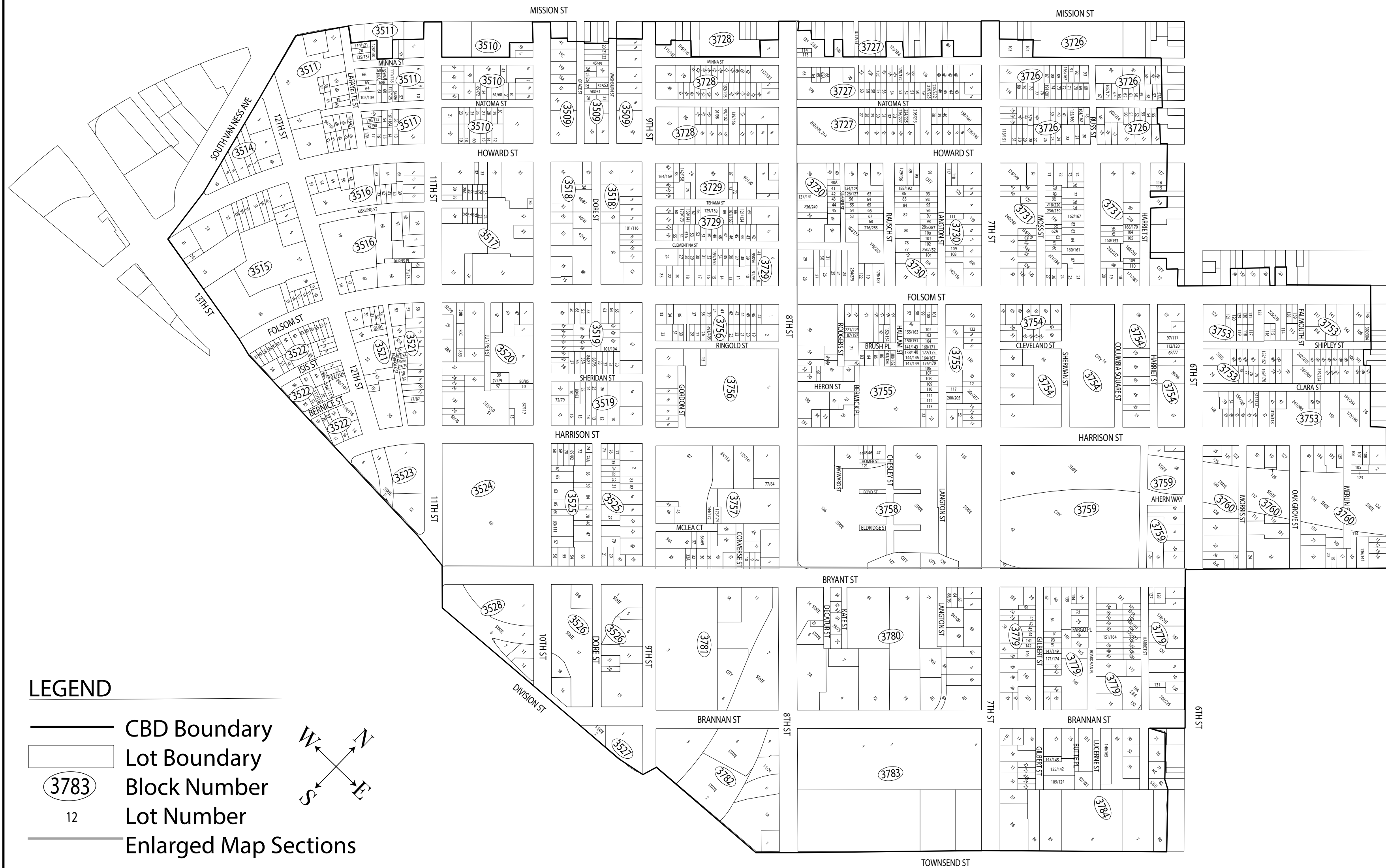


ASSESSMENT DIAGRAM FOR THE ASSESSMENT DISTRICT KNOWN AS THE SOMA WEST COMMUNITY BENEFIT DISTRICT

SHEET 1 OF 4

A Property and Business Improvement District
Established in the City and County of San Francisco, State of California,
Under Part 7 of the California ST.s and Highways Code
("Property and Business Improvement District Law of 1994," §536600 et seq.)
and Article 15 of the San Francisco Business and Tax Regulations Code



- LEGEND**
- CBD Boundary
 - Lot Boundary
 - 3783 Block Number
 - 12 Lot Number
 - Enlarged Map Sections

(1) AN ASSESSMENT WAS LEVIED BY THE BOARD OF SUPERVISORS FOR THE CITY AND COUNTY OF SAN FRANCISCO, STATE OF CALIFORNIA, ON THE LOTS, PIECES, AND PARCELS OF LAND SHOWN ON THIS ASSESSMENT DIAGRAM. THE LEVY OF ASSESSMENTS WAS APPROVED BY THE BOARD OF SUPERVISORS ON _____, 2017 AND SIGNED BY THE MAYOR ON _____, 2017, RESOLUTION NO. _____. THE ASSESSMENT DIAGRAM WAS FILED IN THE OFFICE OF THE CLERK OF THE BOARD OF SUPERVISORS FOR THE CITY AND COUNTY OF SAN FRANCISCO, ON _____, 2017.

SAID RESOLUTION NO. _____, TOGETHER WITH THE STATUTORILY REQUIRED MANAGEMENT DISTRICT PLAN AND CERTIFIED ENGINEER'S REPORT FOR THIS DISTRICT AS ALSO APPROVED BY THE BOARD OF SUPERVISORS, ARE ON FILE WITH THE BOARD OF SUPERVISORS AND ARE SUBMITTED WITH THE ASSESSMENT DIAGRAM TO THE OFFICE OF THE ASSESSOR-RECORDER FOR THE CITY AND COUNTY OF SAN FRANCISCO FOR RECORDING. REFERENCE IS MADE TO THE MANAGEMENT DISTRICT PLAN, ENGINEER'S REPORT AND ASSESSMENT DIAGRAM, FOR THE AMOUNT OF EACH ASSESSMENT LEVIED AGAINST EACH PARCEL OF LAND SHOWN ON THE ASSESSMENT DIAGRAM.

UPON RECORDATION BY THE COUNTY ASSESSOR-RECORDER, A CONFIRMED COPY OF THE ASSESSMENT DIAGRAM WILL BE FILED WITH THE CLERK OF THE BOARD OF SUPERVISORS FOR THE CITY AND COUNTY OF SAN FRANCISCO, AND A NOTICE OF ASSESSMENT WILL BE ISSUED PURSUANT TO CALIFORNIA ST.S AND HIGHWAYS CODE §§3114 AND 36627.

ANGELA CALVILLO, CLERK OF THE BOARD OF SUPERVISORS, CITY AND COUNTY OF SAN FRANCISCO

(2) THE ASSESSMENT DIAGRAM AND RESOLUTION NO. _____ TOGETHER WITH THE MANAGEMENT DISTRICT PLAN AND ENGINEER'S REPORT FOR THIS ASSESSMENT DISTRICT, THAT WERE SUBMITTED FOR RECORDING BY THE CLERK OF THE BOARD OF SUPERVISORS (SEE PARAGRAPH NO. 1 ABOVE), WERE RECORDED BY THE ASSESSOR-RECORDER FOR THE CITY AND COUNTY OF SAN FRANCISCO, STATE OF CALIFORNIA ON _____.

THE ASSESSMENT DIAGRAM WAS FILED IN BOOK _____ OF MAPS OF ASSESSMENT AND COMMUNITY FACILITIES DISTRICTS AT PAGE(S) _____, IN THE OFFICE OF THE ASSESSOR-RECORDER, CITY AND COUNTY OF SAN FRANCISCO, STATE OF CALIFORNIA, AT THE HOUR OF _____ O'CLOCK _____M., ON THIS SAME DATE.

CARMEN CHU, ASSESSOR-RECORDER, CITY AND COUNTY OF SAN FRANCISCO

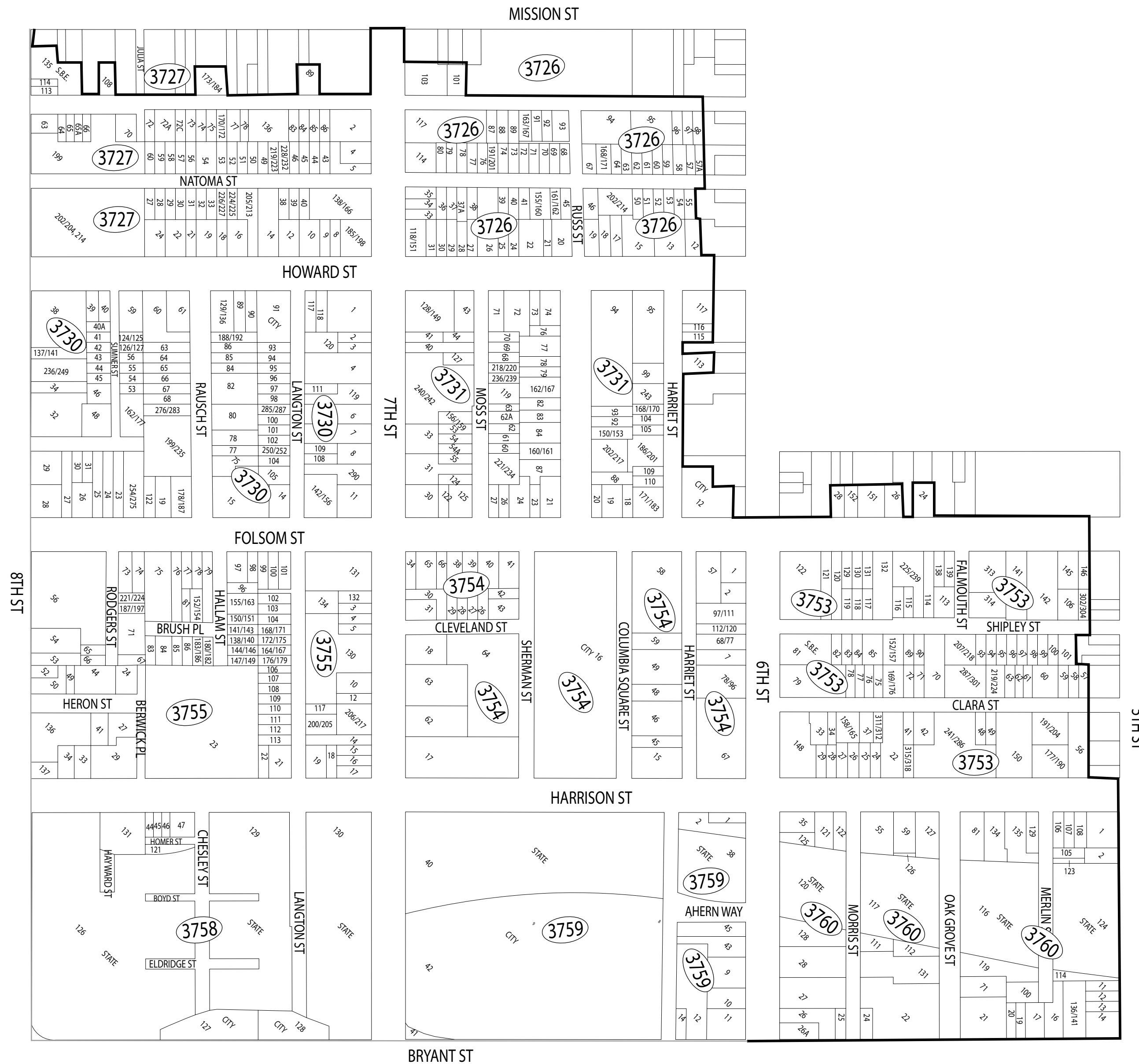
NOTES:
1. FOR PARTICULARS OF THE LINES AND DIMENSIONS OF ASSESSORS PARCELS, REFERENCE IS MADE TO THE MAPS OF THE ASSESSOR OF THE CITY AND COUNTY OF SAN FRANCISCO



ASSESSMENT DIAGRAM FOR THE ASSESSMENT DISTRICT KNOWN AS THE SOMA WEST COMMUNITY BENEFIT DISTRICT

SHEET 2 OF 4

A Property and Business Improvement District
Established in the City and County of San Francisco, State of California,
Under Part 7 of the California ST.s and Highways Code
("Property and Business Improvement District Law of 1994," §536600 et seq.)
and Article 15 of the San Francisco Business and Tax Regulations Code



(1) AN ASSESSMENT WAS LEVIED BY THE BOARD OF SUPERVISORS FOR THE CITY AND COUNTY OF SAN FRANCISCO, STATE OF CALIFORNIA, ON THE LOTS, PIECES, AND PARCELS OF LAND SHOWN ON THIS ASSESSMENT DIAGRAM. THE LEVY OF ASSESSMENTS WAS APPROVED BY THE BOARD OF SUPERVISORS ON _____, 2017 AND SIGNED BY THE MAYOR ON _____, 2017, RESOLUTION NO. _____. THE ASSESSMENT DIAGRAM WAS FILED IN THE OFFICE OF THE CLERK OF THE BOARD OF SUPERVISORS FOR THE CITY AND COUNTY OF SAN FRANCISCO, ON _____, 2017.

SAID RESOLUTION NO. _____, TOGETHER WITH THE STATUTORILY REQUIRED MANAGEMENT DISTRICT PLAN AND CERTIFIED ENGINEER'S REPORT FOR THIS DISTRICT AS ALSO APPROVED BY THE BOARD OF SUPERVISORS, ARE ON FILE WITH THE BOARD OF SUPERVISORS AND ARE SUBMITTED WITH THE ASSESSMENT DIAGRAM TO THE OFFICE OF THE ASSESSOR-RECORDER FOR THE CITY AND COUNTY OF SAN FRANCISCO FOR RECORDING. REFERENCE IS MADE TO THE MANAGEMENT DISTRICT PLAN, ENGINEER'S REPORT AND ASSESSMENT DIAGRAM, FOR THE AMOUNT OF EACH ASSESSMENT LEVIED AGAINST EACH PARCEL OF LAND SHOWN ON THE ASSESSMENT DIAGRAM.

UPON RECORDATION BY THE COUNTY ASSESSOR-RECORDER, A CONFIRMED COPY OF THE ASSESSMENT DIAGRAM WILL BE FILED WITH THE CLERK OF THE BOARD OF SUPERVISORS FOR THE CITY AND COUNTY OF SAN FRANCISCO, AND A NOTICE OF ASSESSMENT WILL BE ISSUED PURSUANT TO CALIFORNIA ST.S AND HIGHWAYS CODE §§3114 AND 36627.

ANGELA CALVILLO, CLERK OF THE BOARD OF SUPERVISORS, CITY AND COUNTY OF SAN FRANCISCO

(2) THE ASSESSMENT DIAGRAM AND RESOLUTION NO. _____ TOGETHER WITH THE MANAGEMENT DISTRICT PLAN AND ENGINEER'S REPORT FOR THIS ASSESSMENT DISTRICT, THAT WERE SUBMITTED FOR RECORDING BY THE CLERK OF THE BOARD OF SUPERVISORS (SEE PARAGRAPH NO. 1 ABOVE), WERE RECORDED BY THE ASSESSOR-RECORDER FOR THE CITY AND COUNTY OF SAN FRANCISCO, STATE OF CALIFORNIA ON _____, 2017. THE ASSESSMENT DIAGRAM WAS FILED IN BOOK _____ OF MAPS OF ASSESSMENT AND COMMUNITY FACILITIES DISTRICTS AT PAGE(S) _____, IN THE OFFICE OF THE ASSESSOR-RECORDER, CITY AND COUNTY OF SAN FRANCISCO, STATE OF CALIFORNIA, AT THE HOUR OF _____ O'CLOCK _____M., ON THIS SAME DATE.

CARMEN CHU, ASSESSOR-RECORDER, CITY AND COUNTY OF SAN FRANCISCO

NOTES:
1. FOR PARTICULARS OF THE LINES AND DIMENSIONS OF ASSESSORS PARCELS, REFERENCE IS MADE TO THE MAPS OF THE ASSESSOR OF THE CITY AND COUNTY OF SAN FRANCISCO

LEGEND

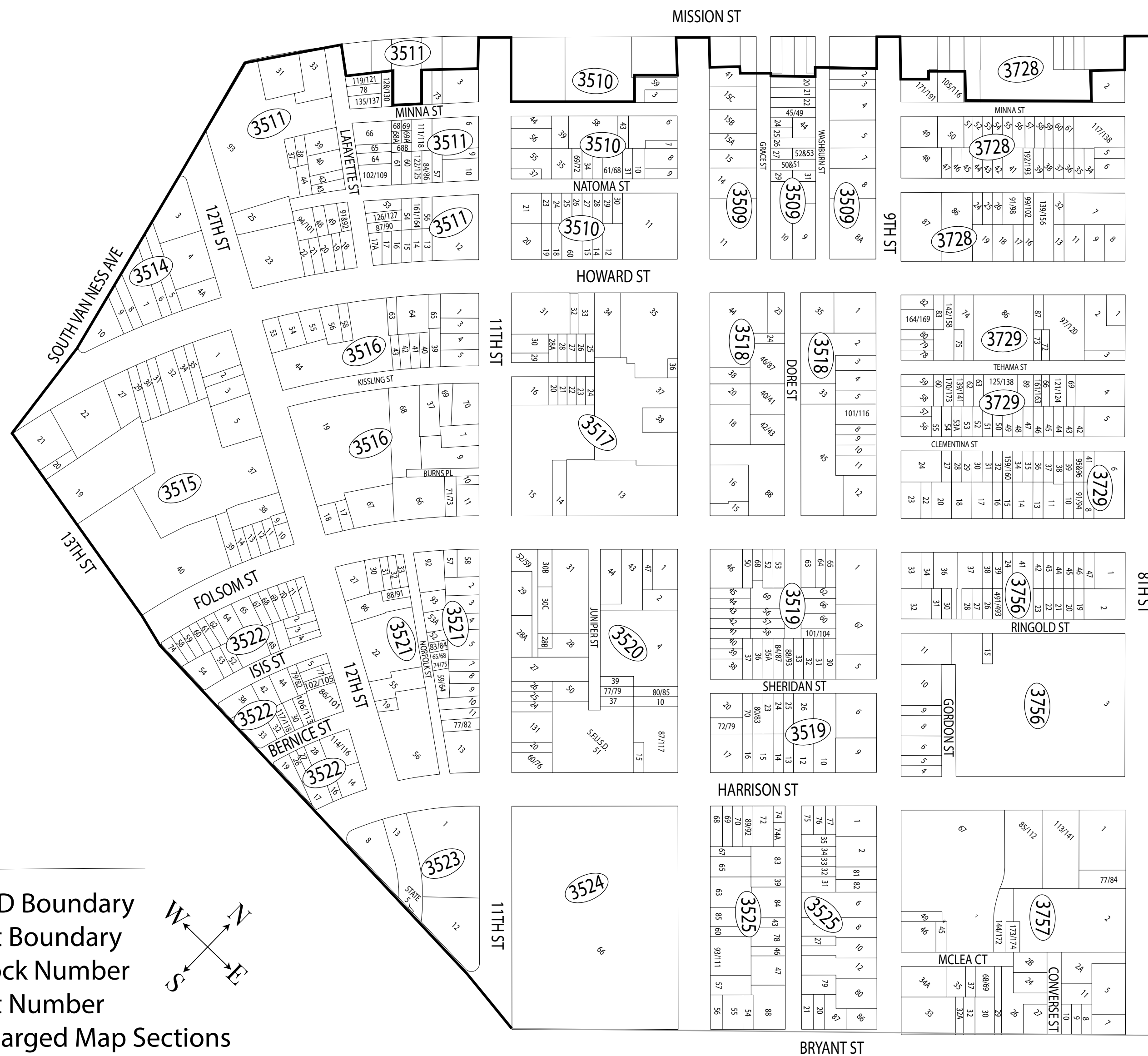
- CBD Boundary
- Lot Boundary
- Block Number
- Lot Number
- Enlarged Map Sections



ASSESSMENT DIAGRAM FOR THE ASSESSMENT DISTRICT KNOWN AS THE SOMA WEST COMMUNITY BENEFIT DISTRICT

SHEET 3 OF 4

A Property and Business Improvement District
Established in the City and County of San Francisco, State of California,
Under Part 7 of the California ST.s and Highways Code
("Property and Business Improvement District Law of 1994," §536600 et seq.)
and Article 15 of the San Francisco Business and Tax Regulations Code



LEGEND

- CBD Boundary
- Lot Boundary
- 3783 Block Number
- Lot Number
- Enlarged Map Sections

(1) AN ASSESSMENT WAS LEVIED BY THE BOARD OF SUPERVISORS FOR THE CITY AND COUNTY OF SAN FRANCISCO, STATE OF CALIFORNIA, ON THE LOTS, PIECES, AND PARCELS OF LAND SHOWN ON THIS ASSESSMENT DIAGRAM. THE LEVY OF ASSESSMENTS WAS APPROVED BY THE BOARD OF SUPERVISORS ON _____, 2017 AND SIGNED BY THE MAYOR ON _____, 2017, RESOLUTION NO. _____. THE ASSESSMENT DIAGRAM WAS FILED IN THE OFFICE OF THE CLERK OF THE BOARD OF SUPERVISORS FOR THE CITY AND COUNTY OF SAN FRANCISCO, ON _____, 2017.

SAID RESOLUTION NO. _____, TOGETHER WITH THE STATUTORILY REQUIRED MANAGEMENT DISTRICT PLAN AND CERTIFIED ENGINEER'S REPORT FOR THIS DISTRICT AS ALSO APPROVED BY THE BOARD OF SUPERVISORS, ARE ON FILE WITH THE BOARD OF SUPERVISORS AND ARE SUBMITTED WITH THE ASSESSMENT DIAGRAM TO THE OFFICE OF THE ASSESSOR-RECORDER FOR THE CITY AND COUNTY OF SAN FRANCISCO FOR RECORDING. REFERENCE IS MADE TO THE MANAGEMENT DISTRICT PLAN, ENGINEER'S REPORT AND ASSESSMENT DIAGRAM, FOR THE AMOUNT OF EACH ASSESSMENT LEVIED AGAINST EACH PARCEL OF LAND SHOWN ON THE ASSESSMENT DIAGRAM.

UPON RECORDATION BY THE COUNTY ASSESSOR-RECORDER, A CONFIRMED COPY OF THE ASSESSMENT DIAGRAM WILL BE FILED WITH THE CLERK OF THE BOARD OF SUPERVISORS FOR THE CITY AND COUNTY OF SAN FRANCISCO, AND A NOTICE OF ASSESSMENT WILL BE ISSUED PURSUANT TO CALIFORNIA ST.S AND HIGHWAYS CODE §§3114 AND 36627.

ANGELA CALVILLO, CLERK OF THE BOARD OF SUPERVISORS,
CITY AND COUNTY OF SAN FRANCISCO

(2) THE ASSESSMENT DIAGRAM AND RESOLUTION NO. _____ TOGETHER WITH THE MANAGEMENT DISTRICT PLAN AND ENGINEER'S REPORT FOR THIS ASSESSMENT DISTRICT, THAT WERE SUBMITTED FOR RECORDING BY THE CLERK OF THE BOARD OF SUPERVISORS (SEE PARAGRAPH NO. 1 ABOVE), WERE RECORDED BY THE ASSESSOR-RECORDER FOR THE CITY AND COUNTY OF SAN FRANCISCO, STATE OF CALIFORNIA ON _____, 2017. THE ASSESSMENT DIAGRAM WAS FILED IN BOOK _____ OF MAPS OF ASSESSMENT AND COMMUNITY FACILITIES DISTRICTS AT PAGE(S) _____, IN THE OFFICE OF THE ASSESSOR-RECORDER, CITY AND COUNTY OF SAN FRANCISCO, STATE OF CALIFORNIA, AT THE HOUR OF _____O'CLOCK _____M., ON THIS SAME DATE.

CARMEN CHU, ASSESSOR-RECORDER, CITY AND COUNTY OF SAN FRANCISCO

NOTES:
1. FOR PARTICULARS OF THE LINES AND DIMENSIONS OF ASSESSORS PARCELS, REFERENCE IS MADE TO THE MAPS OF THE ASSESSOR OF THE CITY AND COUNTY OF SAN FRANCISCO



**ASSESSMENT DIAGRAM
FOR THE ASSESSMENT DISTRICT KNOWN AS THE
SOMA WEST COMMUNITY BENEFIT DISTRICT**

SHEET 4 OF 4

A Property and Business Improvement District
Established in the City and County of San Francisco, State of California,
Under Part 7 of the California S.T.s and Highways Code
("Property and Business Improvement District Law of 1994," §§36600 et seq.)
and Article 15 of the San Francisco Business and Tax Regulations Code

(1) AN ASSESSMENT WAS LEVIED BY THE BOARD OF SUPERVISORS FOR THE CITY AND COUNTY OF SAN FRANCISCO, STATE OF CALIFORNIA, ON THE LOTS, PIECES, AND PARCELS OF LAND SHOWN ON THIS ASSESSMENT DIAGRAM. THE LEVY OF ASSESSMENTS WAS APPROVED BY THE BOARD OF SUPERVISORS ON _____, 2017 AND SIGNED BY THE MAYOR ON _____, 2017, RESOLUTION NO. _____. THE ASSESSMENT DIAGRAM WAS FILED IN THE OFFICE OF THE CLERK OF THE BOARD OF SUPERVISORS FOR THE CITY AND COUNTY OF SAN FRANCISCO, ON _____, 2017.

SAID RESOLUTION NO. _____, TOGETHER WITH THE STATUTORILY REQUIRED MANAGEMENT DISTRICT PLAN AND CERTIFIED ENGINEER'S REPORT FOR THIS DISTRICT AS ALSO APPROVED BY THE BOARD OF SUPERVISORS, ARE ON FILE WITH THE BOARD OF SUPERVISORS AND ARE SUBMITTED WITH THE ASSESSMENT DIAGRAM TO THE OFFICE OF THE ASSESSOR-RECORDER FOR THE CITY AND COUNTY OF SAN FRANCISCO FOR RECORDING. REFERENCE IS MADE TO THE MANAGEMENT DISTRICT PLAN, ENGINEER'S REPORT AND ASSESSMENT DIAGRAM, FOR THE AMOUNT OF EACH ASSESSMENT LEVIED AGAINST EACH PARCEL OF LAND SHOWN ON THE ASSESSMENT DIAGRAM.

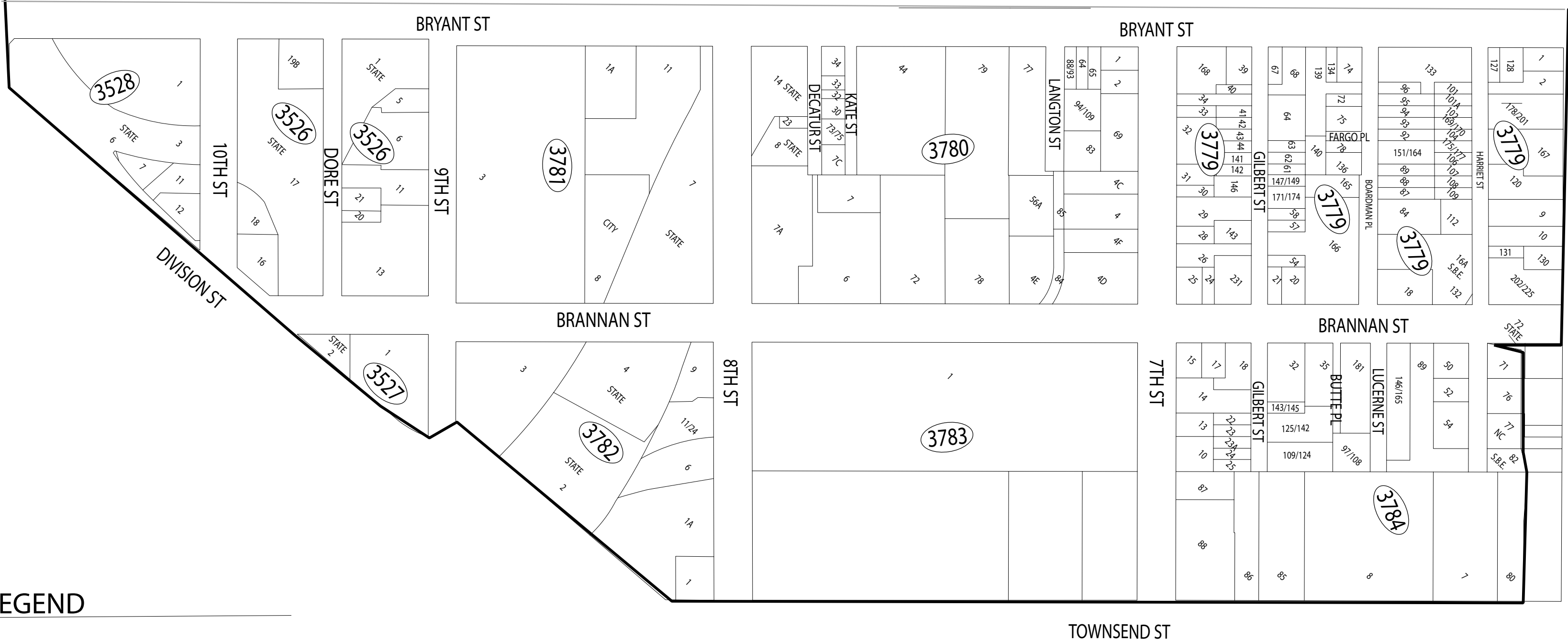
UPON RECORDATION BY THE COUNTY ASSESSOR-RECORDER, A CONFIRMED COPY OF THE ASSESSMENT DIAGRAM WILL BE FILED WITH THE CLERK OF THE BOARD OF SUPERVISORS FOR THE CITY AND COUNTY OF SAN FRANCISCO, AND A NOTICE OF ASSESSMENT WILL BE ISSUED PURSUANT TO CALIFORNIA S.T.S AND HIGHWAYS CODE §§3114 AND 36627.

ANGELA CALVILLO, CLERK OF THE BOARD OF SUPERVISORS,
CITY AND COUNTY OF SAN FRANCISCO

(2) THE ASSESSMENT DIAGRAM AND RESOLUTION NO. _____ TOGETHER WITH THE MANAGEMENT DISTRICT PLAN AND ENGINEER'S REPORT FOR THIS ASSESSMENT DISTRICT, THAT WERE SUBMITTED FOR RECORDING BY THE CLERK OF THE BOARD OF SUPERVISORS (SEE PARAGRAPH NO. 1 ABOVE), WERE RECORDED BY THE ASSESSOR-RECORDER FOR THE CITY AND COUNTY OF SAN FRANCISCO, STATE OF CALIFORNIA ON _____, 2017. THE ASSESSMENT DIAGRAM WAS FILED IN BOOK _____ OF MAPS OF ASSESSMENT AND COMMUNITY FACILITIES DISTRICTS AT PAGE(S) _____, IN THE OFFICE OF THE ASSESSOR-RECORDER, CITY AND COUNTY OF SAN FRANCISCO, STATE OF CALIFORNIA, AT THE HOUR OF _____ O'CLOCK _____ M., ON THIS SAME DATE.

CARMEN CHU, ASSESSOR-RECORDER, CITY AND COUNTY OF
SAN FRANCISCO

NOTES:
1. FOR PARTICULARS OF THE LINES AND DIMENSIONS OF ASSESSORS PARCELS, REFERENCE IS MADE TO THE MAPS OF THE ASSESSOR OF THE CITY AND COUNTY OF SAN FRANCISCO



LEGEND

- CBD Boundary
- Lot Boundary
- 3783 Block Number
- 12 Lot Number
- Enlarged Map Sections



(1) AN ASSESSMENT WAS LEVIED BY THE BOARD OF SUPERVISORS FOR THE CITY AND COUNTY OF SAN FRANCISCO, STATE OF CALIFORNIA, ON THE LOTS, PIECES, AND PARCELS OF LAND SHOWN ON THIS ASSESSMENT DIAGRAM. THE LEVY OF ASSESSMENTS WAS APPROVED BY THE BOARD OF SUPERVISORS ON MARCH 5, 2019 AND SIGNED BY THE MAYOR ON MARCH 14, 2019, RESOLUTION NO. 104-19. THE ASSESSMENT DIAGRAM WAS FILED IN THE OFFICE OF THE CLERK OF THE BOARD OF SUPERVISORS FOR THE CITY AND COUNTY OF SAN FRANCISCO, ON MARCH 22, 2019.

SAID RESOLUTION NO. 104-19, TOGETHER WITH THE STATUTORILY REQUIRED MANAGEMENT DISTRICT PLAN AND CERTIFIED ENGINEER'S REPORT FOR THIS DISTRICT AS ALSO APPROVED BY THE BOARD OF SUPERVISORS, ARE ON FILE WITH THE BOARD OF SUPERVISORS AND ARE SUBMITTED WITH THE ASSESSMENT DIAGRAM TO THE OFFICE OF THE ASSESSOR-RECORDER FOR THE CITY AND COUNTY OF SAN FRANCISCO FOR RECORDING. REFERENCE IS MADE TO THE MANAGEMENT DISTRICT PLAN, ENGINEER'S REPORT AND ASSESSMENT DIAGRAM, FOR THE AMOUNT OF EACH ASSESSMENT LEVIED AGAINST EACH PARCEL OF LAND SHOWN ON THE ASSESSMENT DIAGRAM.

UPON RECORDATION BY THE COUNTY ASSESSOR-RECORDER, A CONFIRMED COPY OF THE ASSESSMENT DIAGRAM WILL BE FILED WITH THE CLERK OF THE BOARD OF SUPERVISORS FOR THE CITY AND COUNTY OF SAN FRANCISCO, AND A NOTICE OF ASSESSMENT WILL BE ISSUED PURSUANT TO CALIFORNIA ST.S AND HIGHWAYS CODE §§3114 AND 36627.

P. Neviri for Angela Cabillo, CBS

ANGELA CALVILLO, CLERK OF THE BOARD OF SUPERVISORS, CITY AND COUNTY OF SAN FRANCISCO

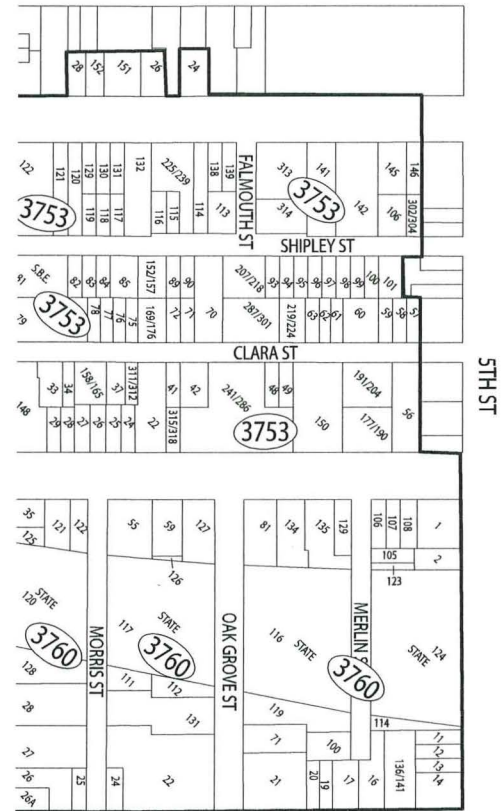
(2) THE ASSESSMENT DIAGRAM AND RESOLUTION NO. 104-19 TOGETHER WITH THE MANAGEMENT DISTRICT PLAN AND ENGINEER'S REPORT FOR THIS ASSESSMENT DISTRICT, THAT WERE SUBMITTED FOR RECORDING BY THE CLERK OF THE BOARD OF SUPERVISORS (SEE PARAGRAPH NO. 1 ABOVE), WERE RECORDED BY THE ASSESSOR-RECORDER FOR THE CITY AND COUNTY OF SAN FRANCISCO, STATE OF CALIFORNIA ON MARCH 27, 2019. THE ASSESSMENT DIAGRAM WAS FILED IN BOOK 001 OF MAPS OF ASSESSMENT AND COMMUNITY FACILITIES DISTRICTS AT PAGE(S) 129-132, IN THE OFFICE OF THE ASSESSOR-RECORDER, CITY AND COUNTY OF SAN FRANCISCO, STATE OF CALIFORNIA, AT THE HOUR OF 4:02 O'CLOCK PM M., ON THIS SAME DATE.

Carmen Chu

CARMEN CHU, ASSESSOR-RECORDER, CITY AND COUNTY OF SAN FRANCISCO

NOTES:

- 1. FOR PARTICULARS OF THE LINES AND DIMENSIONS OF ASSESSORS PARCELS, REFERENCE IS MADE TO THE MAPS OF THE ASSESSOR OF THE CITY AND COUNTY OF SAN FRANCISCO



San Francisco Assessor-Recorder
Carmen Chu, Assessor-Recorder
DOC- 2019-K748437-00

Acct 25-NO CHARGE DOCUMENT
Wednesday, MAR 27, 2019 16:02:24
Ttl Pd \$0.00 Rcpt # 0005974174
VT1/YY/1-4



(1) AN ASSESSMENT WAS LEVIED BY THE BOARD OF SUPERVISORS FOR THE CITY AND COUNTY OF SAN FRANCISCO, STATE OF CALIFORNIA, ON THE LOTS, PIECES, AND PARCELS OF LAND SHOWN ON THIS ASSESSMENT DIAGRAM. THE LEVY OF ASSESSMENTS WAS APPROVED BY THE BOARD OF SUPERVISORS ON MARCH 5, 2019 AND SIGNED BY THE MAYOR ON MARCH 14, 2019, RESOLUTION NO. 104-19. THE ASSESSMENT DIAGRAM WAS FILED IN THE OFFICE OF THE CLERK OF THE BOARD OF SUPERVISORS FOR THE CITY AND COUNTY OF SAN FRANCISCO, ON MARCH 22, 2019.

SAID RESOLUTION NO. 104-19, TOGETHER WITH THE STATUTORILY REQUIRED MANAGEMENT DISTRICT PLAN AND CERTIFIED ENGINEER'S REPORT FOR THIS DISTRICT AS ALSO APPROVED BY THE BOARD OF SUPERVISORS, ARE ON FILE WITH THE BOARD OF SUPERVISORS AND ARE SUBMITTED WITH THE ASSESSMENT DIAGRAM TO THE OFFICE OF THE ASSESSOR-RECORDER FOR THE CITY AND COUNTY OF SAN FRANCISCO FOR RECORDING. REFERENCE IS MADE TO THE MANAGEMENT DISTRICT PLAN, ENGINEER'S REPORT AND ASSESSMENT DIAGRAM, FOR THE AMOUNT OF EACH ASSESSMENT LEVIED AGAINST EACH PARCEL OF LAND SHOWN ON THE ASSESSMENT DIAGRAM.

UPON RECORDATION BY THE COUNTY ASSESSOR-RECORDER, A CONFIRMED COPY OF THE ASSESSMENT DIAGRAM WILL BE FILED WITH THE CLERK OF THE BOARD OF SUPERVISORS FOR THE CITY AND COUNTY OF SAN FRANCISCO, AND A NOTICE OF ASSESSMENT WILL BE ISSUED PURSUANT TO CALIFORNIA ST.S AND HIGHWAYS CODE §§3114 AND 36627.

P. Nomin for Angela Calvillo, COB
 ANGELA CALVILLO, CLERK OF THE BOARD OF SUPERVISORS, CITY AND COUNTY OF SAN FRANCISCO

(2) THE ASSESSMENT DIAGRAM AND RESOLUTION NO. 104-19 TOGETHER WITH THE MANAGEMENT DISTRICT PLAN AND ENGINEER'S REPORT FOR THIS ASSESSMENT DISTRICT, THAT WERE SUBMITTED FOR RECORDING BY THE CLERK OF THE BOARD OF SUPERVISORS (SEE PARAGRAPH NO. 1 ABOVE), WERE RECORDED BY THE ASSESSOR-RECORDER FOR THE CITY AND COUNTY OF SAN FRANCISCO, STATE OF CALIFORNIA ON MARCH 27, 2019. THE ASSESSMENT DIAGRAM WAS FILED IN BOOK 001 OF MAPS OF ASSESSMENT AND COMMUNITY FACILITIES DISTRICTS AT PAGE(S) 129-132, IN THE OFFICE OF THE ASSESSOR-RECORDER, CITY AND COUNTY OF SAN FRANCISCO, STATE OF CALIFORNIA, AT THE HOUR OF 4:00 O'CLOCK PM, ON THIS SAME DATE.

Carmen Chu
 CARMEN CHU, ASSESSOR-RECORDER, CITY AND COUNTY OF SAN FRANCISCO

NOTES:

1. FOR PARTICULARS OF THE LINES AND DIMENSIONS OF ASSESSORS PARCELS, REFERENCE IS MADE TO THE MAPS OF THE ASSESSOR OF THE CITY AND COUNTY OF SAN FRANCISCO



(1) AN ASSESSMENT WAS LEVIED BY THE BOARD OF SUPERVISORS FOR THE CITY AND COUNTY OF SAN FRANCISCO, STATE OF CALIFORNIA, ON THE LOTS, PIECES, AND PARCELS OF LAND SHOWN ON THIS ASSESSMENT DIAGRAM. THE LEVY OF ASSESSMENTS WAS APPROVED BY THE BOARD OF SUPERVISORS ON MARCH 5, 2019 AND SIGNED BY THE MAYOR ON MARCH 14, 2019, RESOLUTION NO. 104-19. THE ASSESSMENT DIAGRAM WAS FILED IN THE OFFICE OF THE CLERK OF THE BOARD OF SUPERVISORS FOR THE CITY AND COUNTY OF SAN FRANCISCO, ON MARCH 22, 2019.

SAID RESOLUTION NO. 104-19, TOGETHER WITH THE STATUTORILY REQUIRED MANAGEMENT DISTRICT PLAN AND CERTIFIED ENGINEER'S REPORT FOR THIS DISTRICT AS ALSO APPROVED BY THE BOARD OF SUPERVISORS, ARE ON FILE WITH THE BOARD OF SUPERVISORS AND ARE SUBMITTED WITH THE ASSESSMENT DIAGRAM TO THE OFFICE OF THE ASSESSOR-RECORDER FOR THE CITY AND COUNTY OF SAN FRANCISCO FOR RECORDING. REFERENCE IS MADE TO THE MANAGEMENT DISTRICT PLAN, ENGINEER'S REPORT AND ASSESSMENT DIAGRAM, FOR THE AMOUNT OF EACH ASSESSMENT LEVIED AGAINST EACH PARCEL OF LAND SHOWN ON THE ASSESSMENT DIAGRAM.

UPON RECORDATION BY THE COUNTY ASSESSOR-RECORDER, A CONFIRMED COPY OF THE ASSESSMENT DIAGRAM WILL BE FILED WITH THE CLERK OF THE BOARD OF SUPERVISORS FOR THE CITY AND COUNTY OF SAN FRANCISCO, AND A NOTICE OF ASSESSMENT WILL BE ISSUED PURSUANT TO CALIFORNIA ST.S AND HIGHWAYS CODE §§3114 AND 36627.

P. Nevin for Angela Calvillo, COB
 ANGELA CALVILLO, CLERK OF THE BOARD OF SUPERVISORS,
 CITY AND COUNTY OF SAN FRANCISCO

(2) THE ASSESSMENT DIAGRAM AND RESOLUTION NO. 104-19 TOGETHER WITH THE MANAGEMENT DISTRICT PLAN AND ENGINEER'S REPORT FOR THIS ASSESSMENT DISTRICT, THAT WERE SUBMITTED FOR RECORDING BY THE CLERK OF THE BOARD OF SUPERVISORS (SEE PARAGRAPH NO. 1 ABOVE), WERE RECORDED BY THE ASSESSOR-RECORDER FOR THE CITY AND COUNTY OF SAN FRANCISCO, STATE OF CALIFORNIA ON MARCH 27, 2019. THE ASSESSMENT DIAGRAM WAS FILED IN BOOK 001 OF MAPS OF ASSESSMENT AND COMMUNITY FACILITIES DISTRICTS AT PAGE(S) 129-132, IN THE OFFICE OF THE ASSESSOR-RECORDER, CITY AND COUNTY OF SAN FRANCISCO, STATE OF CALIFORNIA, AT THE HOUR OF 4:02 O'CLOCK P.M., ON THIS SAME DATE.

Carmen Chu
 CARMEN CHU, ASSESSOR-RECORDER, CITY AND COUNTY OF
 SAN FRANCISCO

NOTES:

1. FOR PARTICULARS OF THE LINES AND DIMENSIONS OF ASSESSORS PARCELS, REFERENCE IS MADE TO THE MAPS OF THE ASSESSOR OF THE CITY AND COUNTY OF SAN FRANCISCO

(1) AN ASSESSMENT WAS LEVIED BY THE BOARD OF SUPERVISORS FOR THE CITY AND COUNTY OF SAN FRANCISCO, STATE OF CALIFORNIA, ON THE LOTS, PIECES, AND PARCELS OF LAND SHOWN ON THIS ASSESSMENT DIAGRAM. THE LEVY OF ASSESSMENTS WAS APPROVED BY THE BOARD OF SUPERVISORS ON MARCH 5, 2019 AND SIGNED BY THE MAYOR ON MARCH 14, 2019, RESOLUTION NO. 104-19. THE ASSESSMENT DIAGRAM WAS FILED IN THE OFFICE OF THE CLERK OF THE BOARD OF SUPERVISORS FOR THE CITY AND COUNTY OF SAN FRANCISCO, ON MARCH 22, 2019.

SAID RESOLUTION NO. 104-19, TOGETHER WITH THE STATUTORILY REQUIRED MANAGEMENT DISTRICT PLAN AND CERTIFIED ENGINEER'S REPORT FOR THIS DISTRICT AS ALSO APPROVED BY THE BOARD OF SUPERVISORS, ARE ON FILE WITH THE BOARD OF SUPERVISORS AND ARE SUBMITTED WITH THE ASSESSMENT DIAGRAM TO THE OFFICE OF THE ASSESSOR-RECORDER FOR THE CITY AND COUNTY OF SAN FRANCISCO FOR RECORDING. REFERENCE IS MADE TO THE MANAGEMENT DISTRICT PLAN, ENGINEER'S REPORT AND ASSESSMENT DIAGRAM, FOR THE AMOUNT OF EACH ASSESSMENT LEVIED AGAINST EACH PARCEL OF LAND SHOWN ON THE ASSESSMENT DIAGRAM.

UPON RECORDATION BY THE COUNTY ASSESSOR-RECORDER, A CONFIRMED COPY OF THE ASSESSMENT DIAGRAM WILL BE FILED WITH THE CLERK OF THE BOARD OF SUPERVISORS FOR THE CITY AND COUNTY OF SAN FRANCISCO, AND A NOTICE OF ASSESSMENT WILL BE ISSUED PURSUANT TO CALIFORNIA ST.S AND HIGHWAYS CODE §§3114 AND 36627.

P. Nevin for Angela Calvillo, COB

ANGELA CALVILLO, CLERK OF THE BOARD OF SUPERVISORS, CITY AND COUNTY OF SAN FRANCISCO

(2) THE ASSESSMENT DIAGRAM AND RESOLUTION NO. 104-19 TOGETHER WITH THE MANAGEMENT DISTRICT PLAN AND ENGINEER'S REPORT FOR THIS ASSESSMENT DISTRICT, THAT WERE SUBMITTED FOR RECORDING BY THE CLERK OF THE BOARD OF SUPERVISORS (SEE PARAGRAPH NO. 1 ABOVE), WERE RECORDED BY THE ASSESSOR-RECORDER FOR THE CITY AND COUNTY OF SAN FRANCISCO, STATE OF CALIFORNIA ON MARCH 27, 2019. THE ASSESSMENT DIAGRAM WAS FILED IN BOOK 001 OF MAPS OF ASSESSMENT AND COMMUNITY FACILITIES DISTRICTS AT PAGE(S) 129-132, IN THE OFFICE OF THE ASSESSOR-RECORDER, CITY AND COUNTY OF SAN FRANCISCO, STATE OF CALIFORNIA, AT THE HOUR OF 4:02 O'CLOCK P.M., ON THIS SAME DATE.

Carmen Chu

CARMEN CHU, ASSESSOR-RECORDER, CITY AND COUNTY OF SAN FRANCISCO

NOTES:

1. FOR PARTICULARS OF THE LINES AND DIMENSIONS OF ASSESSORS PARCELS, REFERENCE IS MADE TO THE MAPS OF THE ASSESSOR OF THE CITY AND COUNTY OF SAN FRANCISCO

