

File #170032
Received in Committee
2/9/17



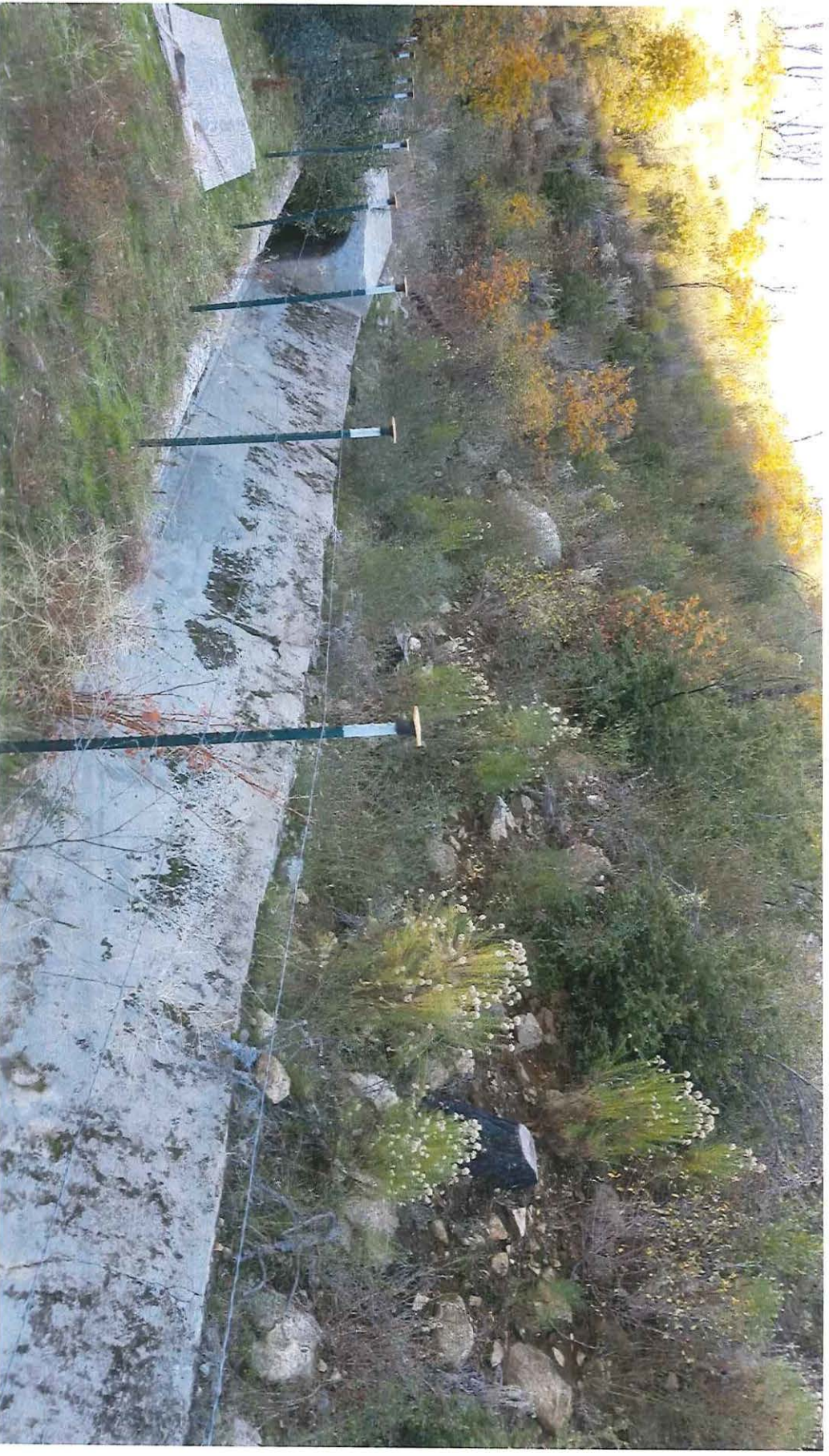
Lower Cherry Aqueduct Rehabilitation

Hetch Hetchy Capital Improvement Projects

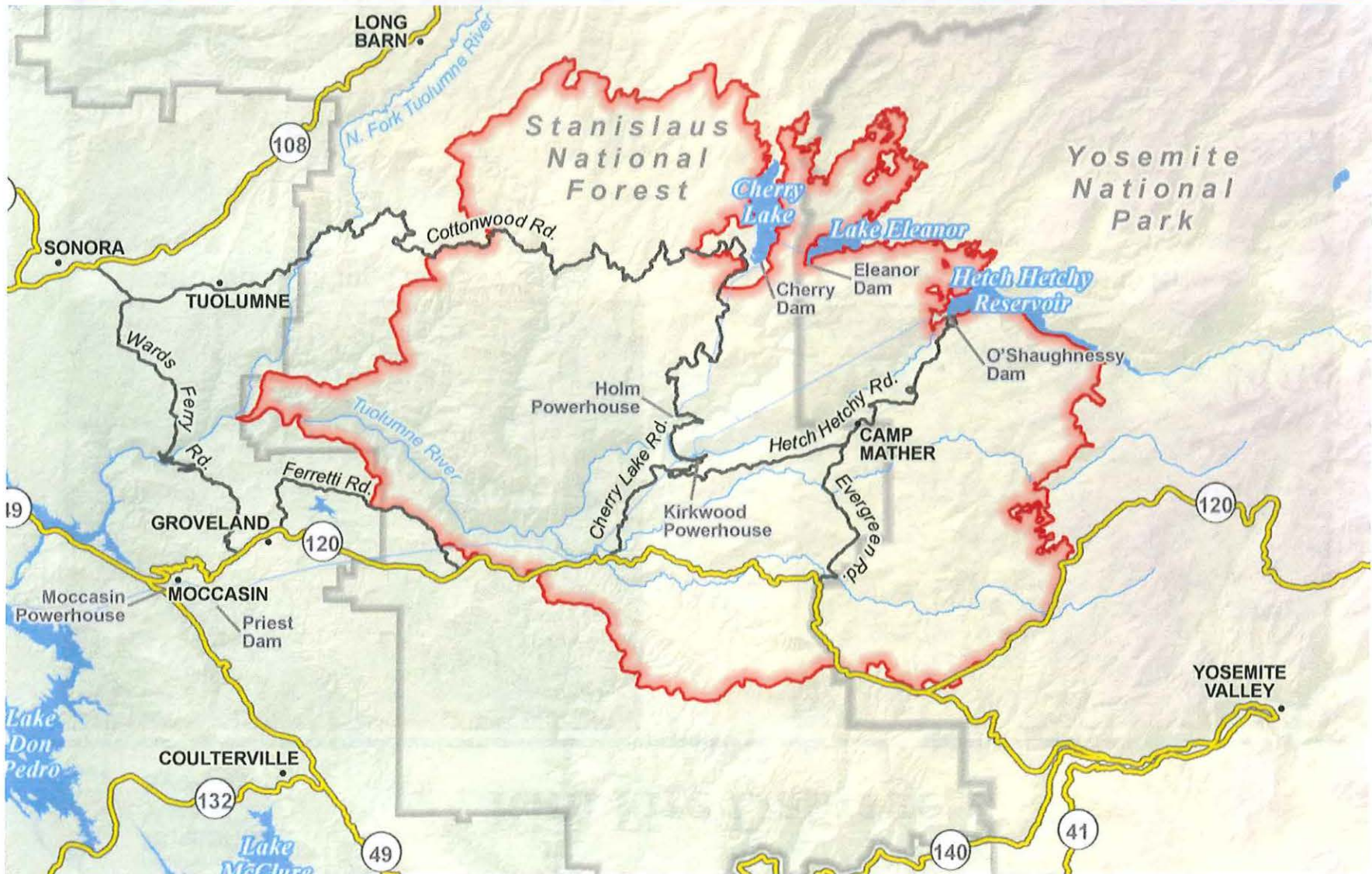
**Daniel L. Wade, Director
Water Infrastructure Capital Projects and Programs**

**San Francisco Board of Supervisors
Budget & Finance Committee
February 9, 2017**

Lower Cherry Aqueduct Rehabilitation



2013 Rim Fire



Rim Fire Damage



Destroyed Buildings at Head Gates



Damaged Pedestrian Bridge



Debris from Slope



Damaged Foot Trail to Head Gates

Work Completed



Repaired Aqueduct Lining



Temporary Access to Head Gates



Installed Bat Gates at Adits



Cleaned Debris from Tunnels

Future Work

- Install two new sluice gates and hydraulic operator
- Replace fire damaged structures – hydraulic building and gatehouse
- Repair concrete on the dam face
- Install permanent access to the head gates
- Improve trail access, install handrails, foot bridges
- Repair saddles supporting pipe section of aqueduct
- Install drain and mesh cover, and remove frame from old gate valve at the forebay
- Install new fence adjacent to open aqueduct
- Install new foot bridges crossing open aqueduct

Budget & Schedule

Budget

- Cost to Date \$ 9,290,199
- Projected Future Costs \$ 4,698,906

Schedule

- Complete Design – May 2017
- Bid & Award - September 2017 to February 2018
- Construction – March 2018 to November 2018
- Closeout - December 2018 to March 2019

Request

Authorize the SFPUC General Manager to **accept and expend a grant for up to \$3,000,000** through SFPUC's Memorandum of Understanding with the Association of Bay Area Governments for implementation of the Lower Cherry Aqueduct Emergency Rehabilitation Project, funded in part by grant funds from the California Department of Water Resources.