

COVID Command School Reopening Operations Plan – PREVENTION

Last updated 11/8/20



PREVENTION AND MITIGATION



Reopening and Ongoing Operations - TK-12

- Receive and review school reopening applications
 - Reopening plan review
 - Facilities plan review
 - Site Assessment
- Ongoing monitoring of schools
 - Complaints



Community Support

- Ensure community concerns are included in directives and guidance
- Receive and respond to community and stakeholder questions over email and phone
- Organize and run ongoing meetings and webinars with stakeholder groups



Exposure Investigation

- 0-5, K-12 School and OST, IHE
- Work with schools, OMG, CI/CT to coordinate and investigate positive test results.
- Fulfill metrics and reporting requests



School Directive and Guidance

4

SFDPH, CDPH, and CalOSHA Guidance for Schools and School-Based Programs require elementary school reopening plans to address the following, which will serve as basis for San Francisco reopening:

School-specific




- Daily symptom screenings for students and staff
- Small, stable, cohorting
- Entrance, egress, and movement within the school
- Staff training and family education
- Triggers for switching to distance learning
- School Communication plans



Universal

- Cleaning ,disinfection and ventilation
- Face coverings and other essential protective gear
- Physical distancing
- Healthy hygiene practices
- Symptomatic/Close Contact Testing of students and staff
- Identification and tracing of contacts



San Francisco Department of Public Health **Guidance**

Reopening TK-12 Schools for In-Person, On-Site Instruction
Preliminary Guidance for School Year 2020-2021

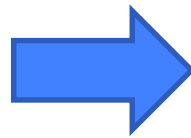
August 10, 2020

The following guidance was developed by the San Francisco Department of Public Health (SFDPH) for use by local schools, and will be posted at <http://www.sfdcph.org/covidschoolschildcare>.

AUDIENCE: This guidance applies to public, private and parochial TK-12 schools in San Francisco. Transitional Kindergartens (TK) that are part of preschool programs or are independent of elementary school programs should review SFDPH guidance for childcare programs.



Schools will have to go from this....

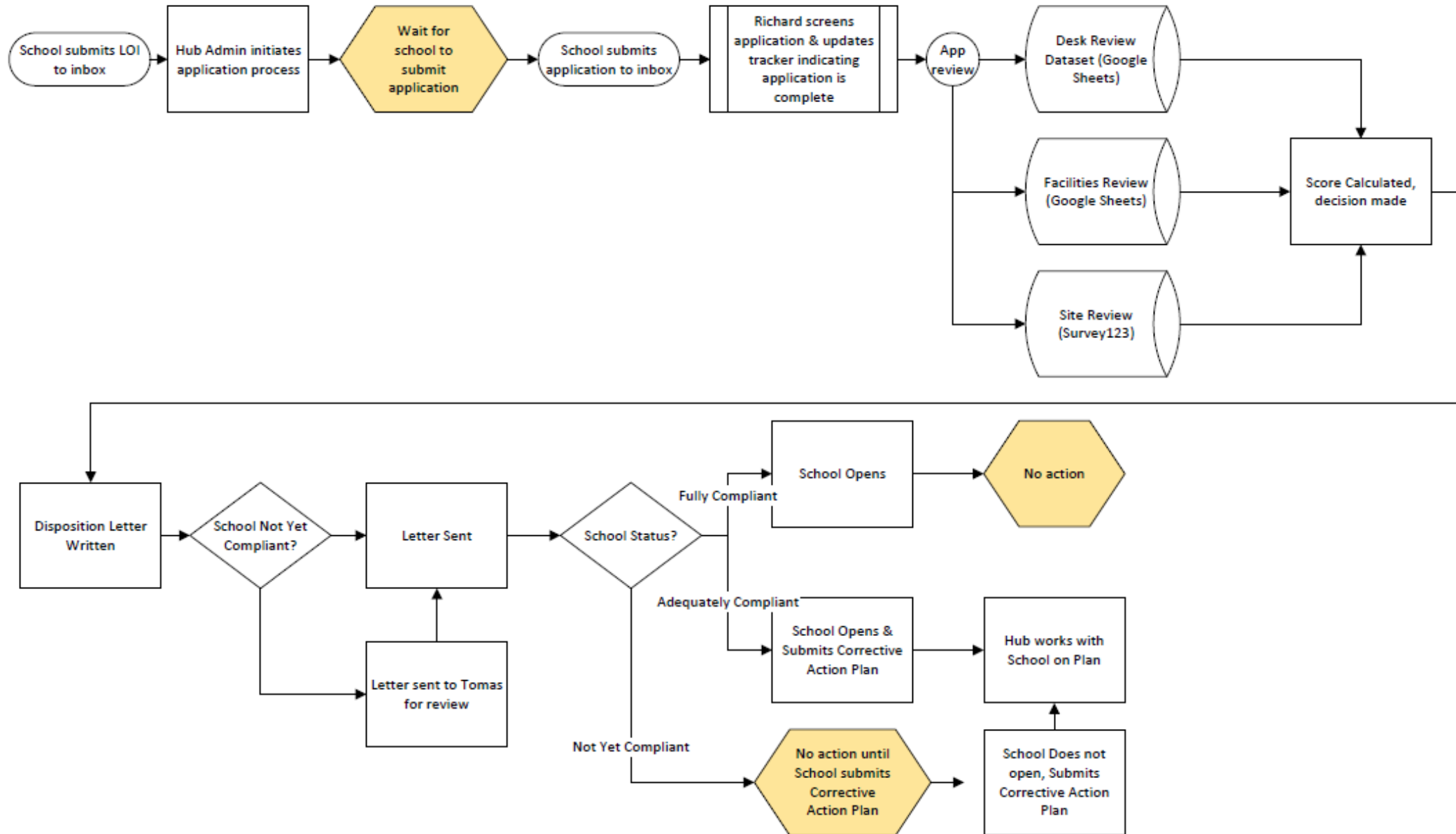


...to this to reduce spread of CV-19



School Reopening Process

6





Reopening Status by School

Schools that have submitted a letter of interest to reopen for in-person instruction are shown below. Filter for a school, or click on the map to see more details about the school's status in the table below.

Filter the Data:

Show all schools that have submitted a letter of interest

Show elementary schools

Show middle schools

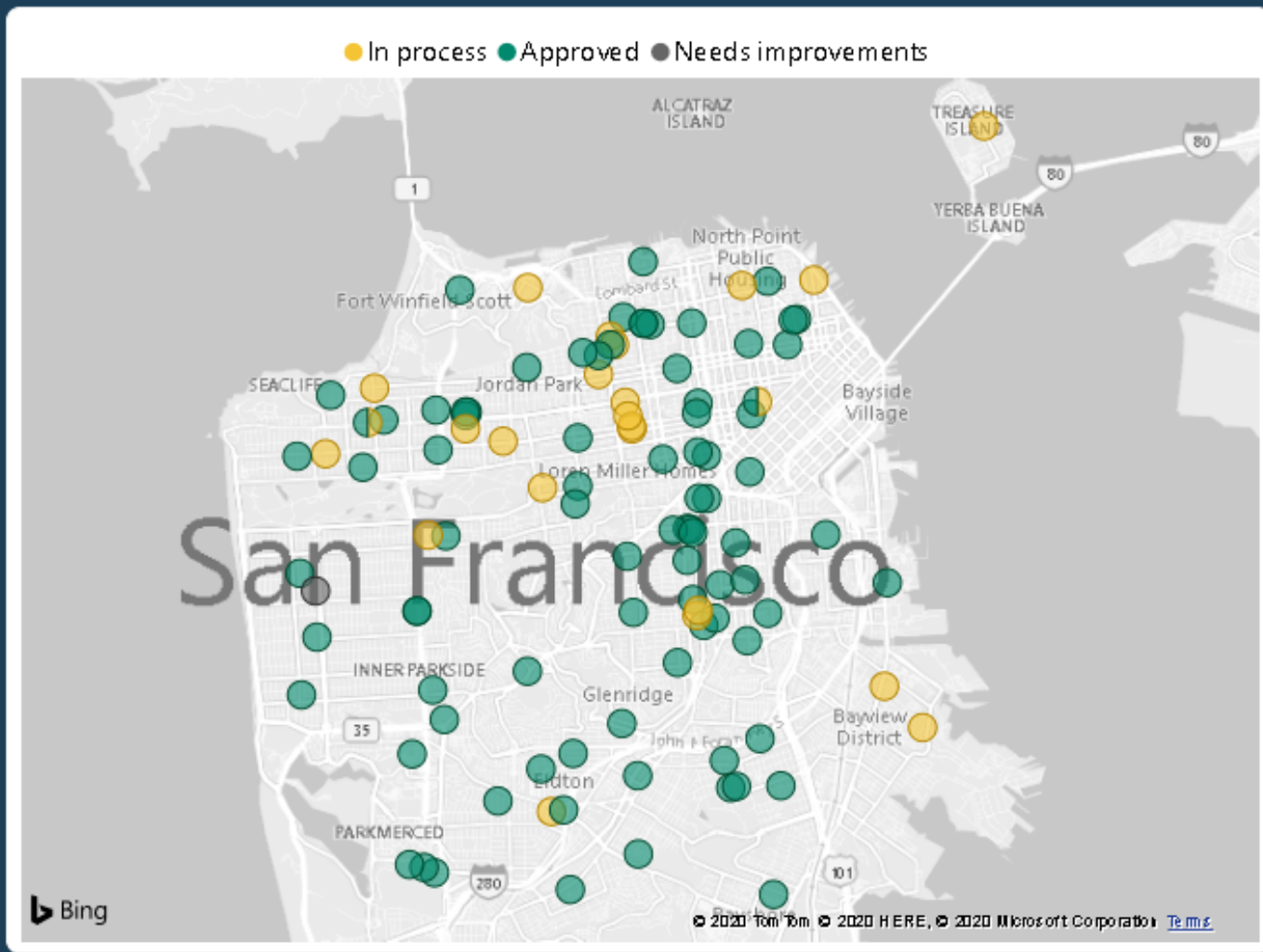
Show high schools

School Name

Type a school name here

Can't find your school in the list?

Check the map at the right, and if it isn't listed, your school has not yet submitted a letter of interest to reopen.



Letters of Interest Sent to SFPD

116

Applications Completed

108

Site Assessments Requested

103

Site Assessments Completed

92

Approvals

90

Prompted by Reopening Assessments – Pre-Approval

There are three categories of ongoing monitoring for schools deemed Not Yet Compliant to reopen based on reopening assessment.

01

Isolated Concerns

Not Yet Approved composite score (<80%), but could show improvements

- Repeat relevant components of desk and/or onsite reviews until issues are addressed

02

Systemic Issues

(1) Multiple complaints received during review process; (2) failing scores or major concerns from onsite process; and/or (3) history of health violations at school

- Tailored desk and onsite reviews
- Repeated site visits following reopening (unannounced)
- Unable to reopen until school has reached the Adequately Approved composite score (>80%)

03

No Confidence

Significant and ongoing COVID safety issues remaining after at least 3 onsite and/or desk reviews.

- School is not permitted to reopen and must wait 14 days to reapply.

Ongoing Monitoring – After Opening

Health Officer's August 29th letter outlines 4 types of ongoing monitoring actions that are prompted by **complaints**.

01

Initial Inspection

- Driven by receipt of a single complaint
- Initial inspection completed by:
 - SFDPH
 - CERT, or
 - Other CCSF staff
- Review and assist with education and compliance as needed

02

Issue a Notice of Violation (NOV)

- Initiated by failure to fully resolve identified violations
- Identifies each violation, identifies remedial actions, and specifies time limits

03

Cessation of In-Person Classes

- Driven by failure to fully comply with NOV
- All in-person instruction temporarily banned
- School must submit written plan for improved compliance with COVID-19 plan

04

Revoke Application Approval

- Driven by failure to comply with a 2nd NOV
- SFDPH revokes application
- School must wait 14 days to re-apply for a application