



LONDON N. BREED
MAYOR

CITY AND COUNTY OF SAN FRANCISCO
POLICE DEPARTMENT
HEADQUARTERS
1245 3RD Street
San Francisco, California 94158



WILLIAM SCOTT
CHIEF OF POLICE

July 31, 2018

Board of Supervisors
City and County of San Francisco
City Hall, Room 244
1 Dr. Carlton B Goodlett Pl
San Francisco, CA 94102

President and Members:

On November 10, 2017, the Board of Supervisors (“BOS”) passed Resolution 399-17. This resolution urged the SFPD to submit to the BOS a six-month report on the department’s progress on preventing and investigating automobile break-ins, bicycle theft and residential burglaries in the City. The following is the inaugural report of the Neighborhood Property Crime Units. The next six-month report will be submitted to the BOS on or before December 31, 2018, and then annually every year thereafter.

This report will provide an overview of the following:

- Neighborhood Property Crime Units
- BOS Recommended Strategies
- SFPD Neighborhood Property Crime Pilot District Stations
- Community Outreach
- Resources Needed
- Data/Metrics stemming from the Departments efforts

SFPD will be available to present and discuss this report, at the Board’s request, any time after the August recess.

Respectfully submitted,


WILLIAM SCOTT
Chief of Police

cc: Mayor London Breed
Angela Calvillo, Clerk of the Board

Neighborhood Property Crime Units

The SFPD Neighborhood Property Crime Units serve to strengthen existing structures within the Police Department to combat automobile break-ins, bicycle theft, residential burglaries, and other neighborhood property crime (burglary, larceny-theft, and motor vehicle theft). The goal of these units also includes the following:

- Improve coordination and communication
- Create transparency and accountability data metrics
- Create a centralized General Crimes Unit to support the districts
 - Tackle Residential, Commercial, and Auto Burglaries
 - Network with District Attorney
 - Focus on prolific offenders
- District Station Captains designate a property crime liaison
 - Provide community groups with information on crime strategies, trends, and prevention

BOS Recommended Strategies to Include in the Plan(s)

- Collaboration among District Captains, Staff, and Centralized Units
- Development of neighborhood specific priorities and strategies for property crime reductions
- Reassign officers to increase foot patrols
- Share property crime data with other City Departments and Law Enforcement partners
- Share data with the public

SFPD Neighborhood Property Crime Pilot

- January of 2018 Pilot District Stations: Taraval and Mission
 - SFPD Pilot goal – All 10 district stations follow the lead of Taraval and Mission Stations by the end of 2018
- Crime Strategies Coordinator will join SFPD by the end of 2018 to work with District Station Captains and centralized units
 - Assess and analyze results from Taraval and Mission Pilot program in order to modify tactics

Pilot Station: Taraval

- January 2018: Implemented the Neighborhood Crimes Unit
- Three tiered approach – Enforcement, Education, and Environment
 - Taraval Neighborhood Team (“TNT”), foot beat officers, patrol officers, and public outreach - Park Smart campaign
- Property Crime Liaison
- Targeted areas include: Stonestown Galleria, Park Merced, Irving Street, West Portal Avenue, and Ocean Avenue

- Focused efforts based on peak times/days for the majority of residential and auto burglary hits
- Uniform and Plain Clothes patrols in affected areas
- Educate merchant and neighborhood associations
- Collaborate with the Stonestown Galleria Director of Security
- Officers provided with up to date pin maps and information of theft from vehicle incidents
- Special Operations Bureau deployment support

Pilot Station: Mission

- January 2018: Implemented the Neighborhood Crimes Unit
- Three tiered approach – Enforcement, Education and Environment
- Property Crime Liaison
- Focused efforts based on peak times/days for the majority of residential and auto burglary hits
- Targeted areas include residential areas and retail parking lots
- Increase number of foot beat officers
- Plainclothes officers continue to conduct focused operations
- Bait car/bike operations
- Surveillance team deployment
- Operations involving vehicles without proper DMV issued license plates (paper plates)

Community Outreach

- The Department continues to engage in community outreach efforts and public education campaigns directly and through partnerships including:
 - Park Smart Campaign
 - District Community Police Advisory Boards (CPABs)
 - Local community groups
 - The Ambassador Program
 - SF Safety Awareness for Everyone (SF SAFE)
 - Collaboration with other City agencies to identify and place signage in hot spot areas
 - Evaluate environmental design in neighborhoods to reduce/eliminate potential target areas (Fix it Team)
 - Information provided to the community by District Captains through newsletters to include crime analysis data, offender information, and prevention techniques

Resources Needed to Support the Strategy

Additional resources were requested and approved in this year's budget, allowing for an anticipated increase of SFPD officer staffing by 26 in FY 2018/19 and by 76 in FY 2019/20. With these resources, the Department will make adjustments as trends and analysis dictate. We will continue to assess staffing needs through our Staffing Analysis Task Force and through analysis of data derived from the Neighborhood Property Crime Unit District Station Pilot program.

Data/Metrics (2018 data: January 1 through June 30)

- Pilot Station, Taraval: Burglary has decreased by 21%, Larceny/Theft has decreased by 25%, Auto Burglary has decreased by 26%, Auto Theft has decreased by 21% and Bicycle Theft has an increase of 0%, between 2017 and 2018, YTD.
- Pilot Station, Mission: Burglary has decreased by 12%, Larceny/Theft has increased by 14%, Auto Burglary has increased by 6%, Auto Theft has decreased by 27% and Bicycle Theft has increased by 56% between 2017 and 2018, YTD.
- Property Crime, Citywide: In 2017, there was an average of 4,673 Property Crimes per month. In 2018, there is an average of 3,960 Property Crimes per month. There were 28,051 Property Crime incidents in 2017 and 24,796 incidents in 2018. There has been an **overall 12% decrease** in Property Crime Incidents from 2017 to 2018, YTD.
- Larceny-Theft, Citywide: The average number of Larceny-Thefts per month was 3772 in 2017 and is 3179 in 2018. There was an **overall 12% decrease** in Larceny-Thefts between 2017 and 2018.
 - Theft from Vehicle, Citywide: The average number of Thefts from Vehicles per month was 2,588 in 2017 and is 2,193 in 2018. Although there was a significant spike in the number of incidents in February of 2018, there has been an **overall 20% decrease** in the number of incidents between 2017 and 2018.
- Vehicle Theft, Citywide: The average number of Vehicle Thefts per month was 444 in 2017 and is 330 in 2018. Although there has been a steady rise in incidents since April of 2018, there has been an **overall 25% decrease** since 2017.
- Burglary, Citywide: The average number of Burglaries per month was 433 in 2017 and is 445 in 2018. There was an **overall 4% increase** from 2017 to 2018 YTD.
 - Hot Prowl, Citywide: There has been an overall 28% decrease in the number of reported Hot Prowls since 2017, YTD
- Bicycle Theft, Citywide: There has been an **overall 12% increase** in the number of reported Bike Thefts since 2017 YTD.



Taraval Results

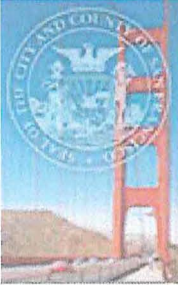
2017 vs 2018 YTD thru June 30th

Crime	2017	2018	% Change
Burglary	312	246	-21% ↓
Larceny/Theft	1,524	1,146	-25% ↓
Auto Burglary	940	695	-26% ↓
Auto Theft	221	174	-21% ↓
Bicycle Theft	8	8	0% →

7/30/18

SFPD.CAU
Data Source: Compstat '17-'18, CDW/BI





Mission Results

2017 vs 2018 YTD thru June 30th

Crime	2017	2018	% Change
Burglary	346	305	-12% ↓
Larceny/Theft	2,297	2,620	+14% ↑
Auto Burglary	1,502	1,587	+6% ↑
Auto Theft	433	315	-27% ↓
Bicycle Theft	41	64	+56% ↑

7/30/18

SFPD.CAU
Data Source: Compstat '17-'18, CDW/BI





Property Crime Citywide 2017 vs 2018 YTD thru June 30th



Crime	2017	2018	% Change
Burglary	2,598	2,697	4% ↑
Larceny/Theft	22,638	19,958	-12% ↓
Auto Burglary	15,531	12,442	-20% ↓
Auto Theft	2,664	2,009	-25% ↓
Bicycle Theft	355	396	+12% ↑

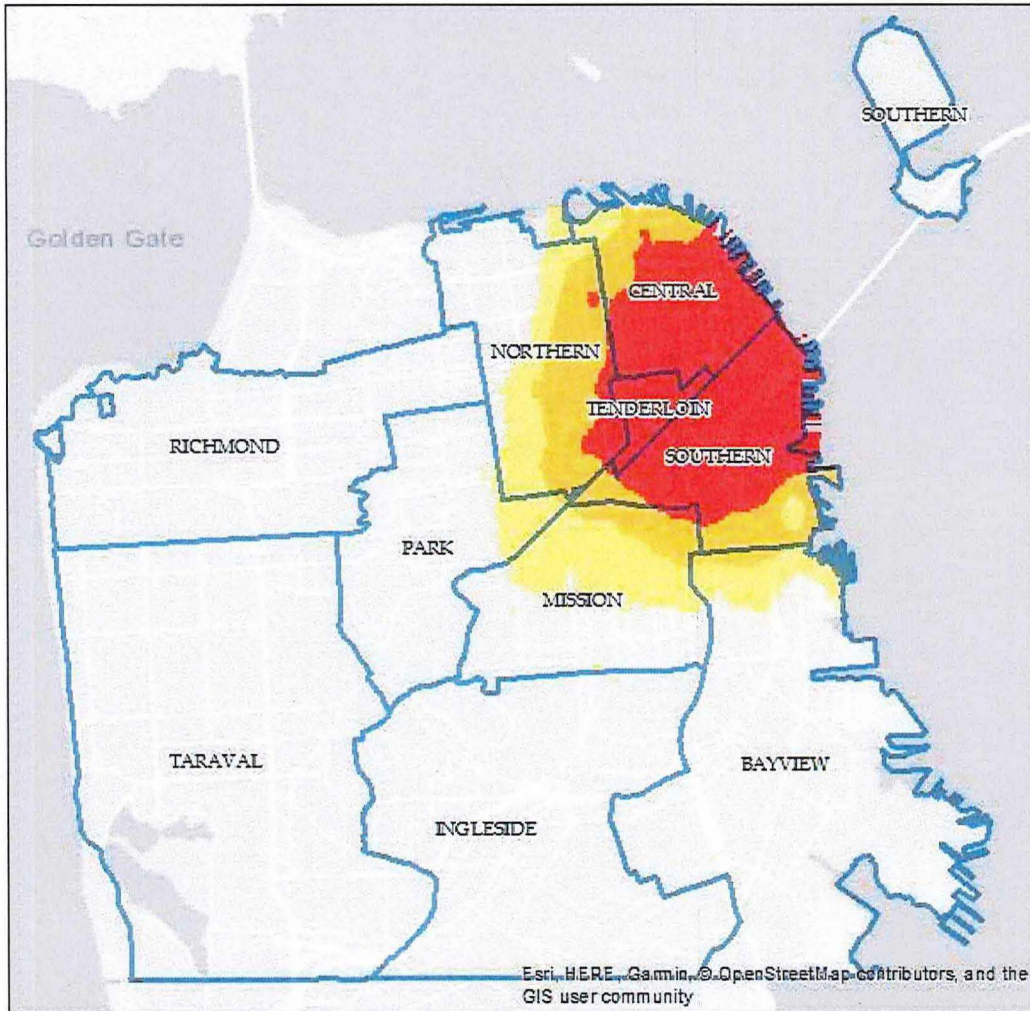
7/30/18

SFPD.CAU
Data Source: Compstat '17-'18

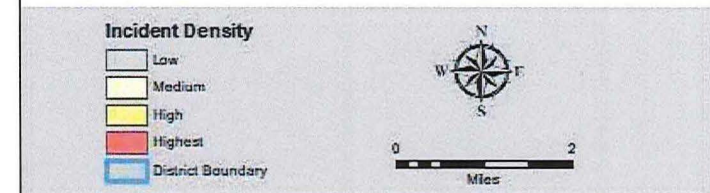




Citywide Bicycle Theft (347) January 1 - June 30, 2018



2018	Jan	Feb	Mar	Apr	May	June	Total	% of Total
Metro								
Metro Total	31	43	39	58	46	55	272	85%
A	13	13	10	20	12	15	83	26%
B	7	10	7	11	8	8	51	16%
D	7	8	10	12	17	10	64	20%
E	3	7	8	10	6	14	48	15%
J	1	5	4	5	3	8	26	8%
Golden Gate								
GG Total	9	8	3	15	8	5	48	15%
C	1	1	1	2	2	2	9	3%
F	1	2	1	3	1	2	10	3%
G	1	2	1	4	1	0	9	3%
H	3	2	0	3	3	1	12	4%
I	3	1	0	3	1	0	8	3%
Grand Total	40	51	42	73	54	60	320	100%



This map accurately reflects the information available in SFPD's Crime Data Warehouse/Business Intelligence Tools at time of preparation

Prepared by San Francisco Police Department Crime Analysis Unit, 7/25/18

PARK SMART!

Take ALL of your valuables with you.



Purses
Backpacks
Wallets
Passports
Personal IDs
Cellphones
Cameras
Computers
Laptops
Tablets

PARQUÉ INTELIGENTE
Saque todas sus cosas de valor.

GAREZ VOUS MALIN
Ne laissez pas vos objets de valeur
dans votre voiture.

財不可露眼!
離開汽車時, 請把貴重物品隨身。

Let's kick auto break-ins
to the curb!

