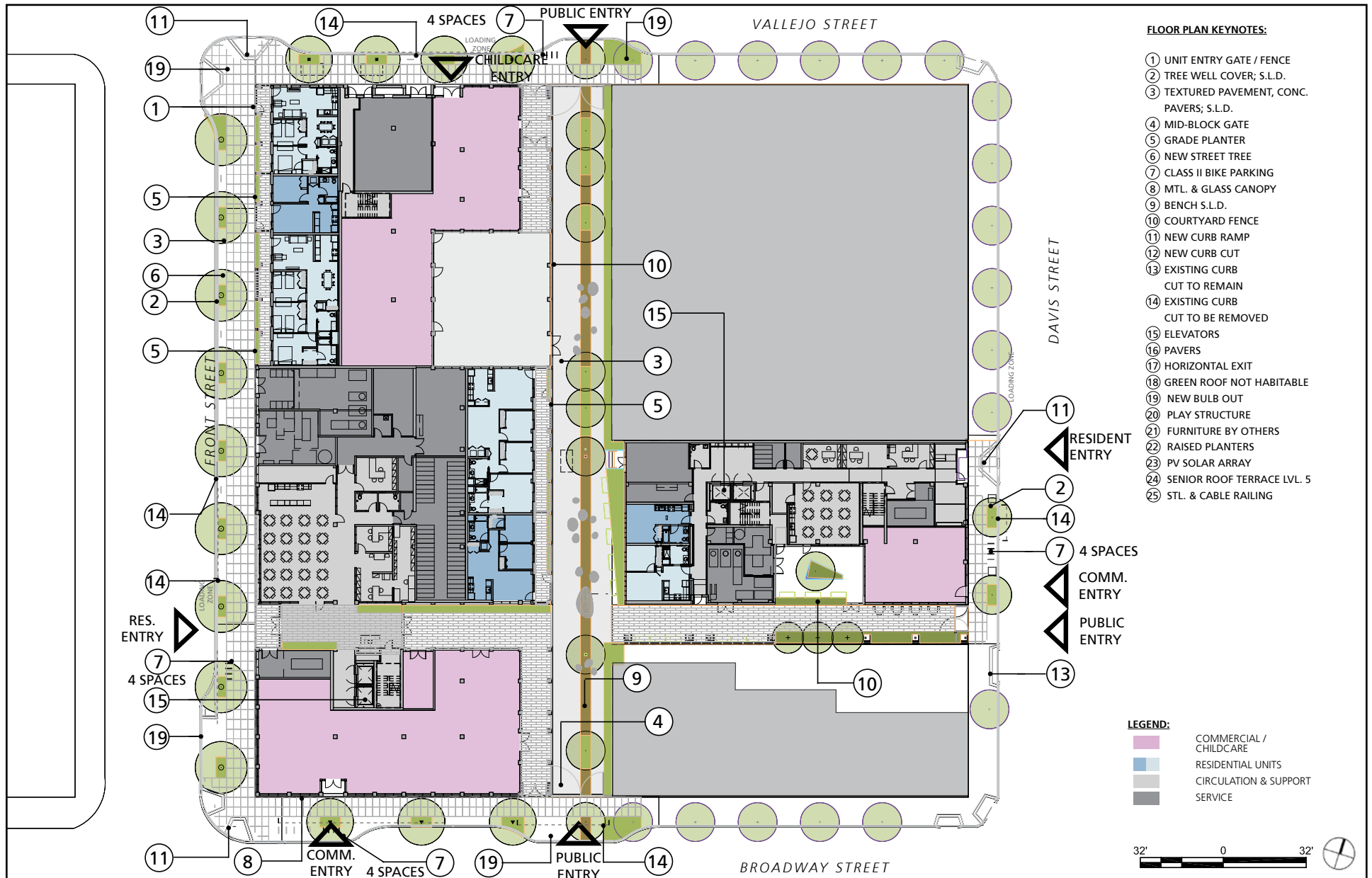


Source: The John Stewart Company, Bridge Housing, Leddy Maytum Stacy Architects, February 26th, 2018.

88 BROADWAY & 735 DAVIS STREET PROJECT INITIAL STUDY

Case No. 2016-007850ENV

FIGURE 2
Proposed Site Plan



Source: The John Stewart Company, Bridge Housing, Leddy Maytum Stacy Architects, February 26th, 2018.

88 BROADWAY & 735 DAVIS STREET PROJECT INITIAL STUDY

Case No. 2016-007850ENV

FIGURE 3
Proposed Level 1 (Ground Floor) Plan



Source: The John Stewart Company, Bridge Housing, Leddy Maytum Stacy Architects, February 26th, 2018.

88 BROADWAY & 735 DAVIS STREET PROJECT INITIAL STUDY

Case No. 2016-007850ENV

FIGURE 4
Proposed Level 2 Plan



Source: The John Stewart Company, Bridge Housing, Leddy Maytum Stacy Architects, February 26th, 2018.

88 BROADWAY & 735 DAVIS STREET PROJECT INITIAL STUDY

Case No. 2016-007850ENV

FIGURE 5
Proposed Level 3 Plan



Source: The John Stewart Company, Bridge Housing, Leddy Maytum Stacy Architects, February 26th, 2018.

88 BROADWAY & 735 DAVIS STREET PROJECT INITIAL STUDY

Case No. 2016-007850ENV

FIGURE 6
Proposed Level 4 Plan



Source: The John Stewart Company, Bridge Housing, Leddy Maytum Stacy Architects, February 26th, 2018.

88 BROADWAY & 735 DAVIS STREET PROJECT INITIAL STUDY

Case No. 2016-007850ENV

FIGURE 7
Proposed Level 5 Plan

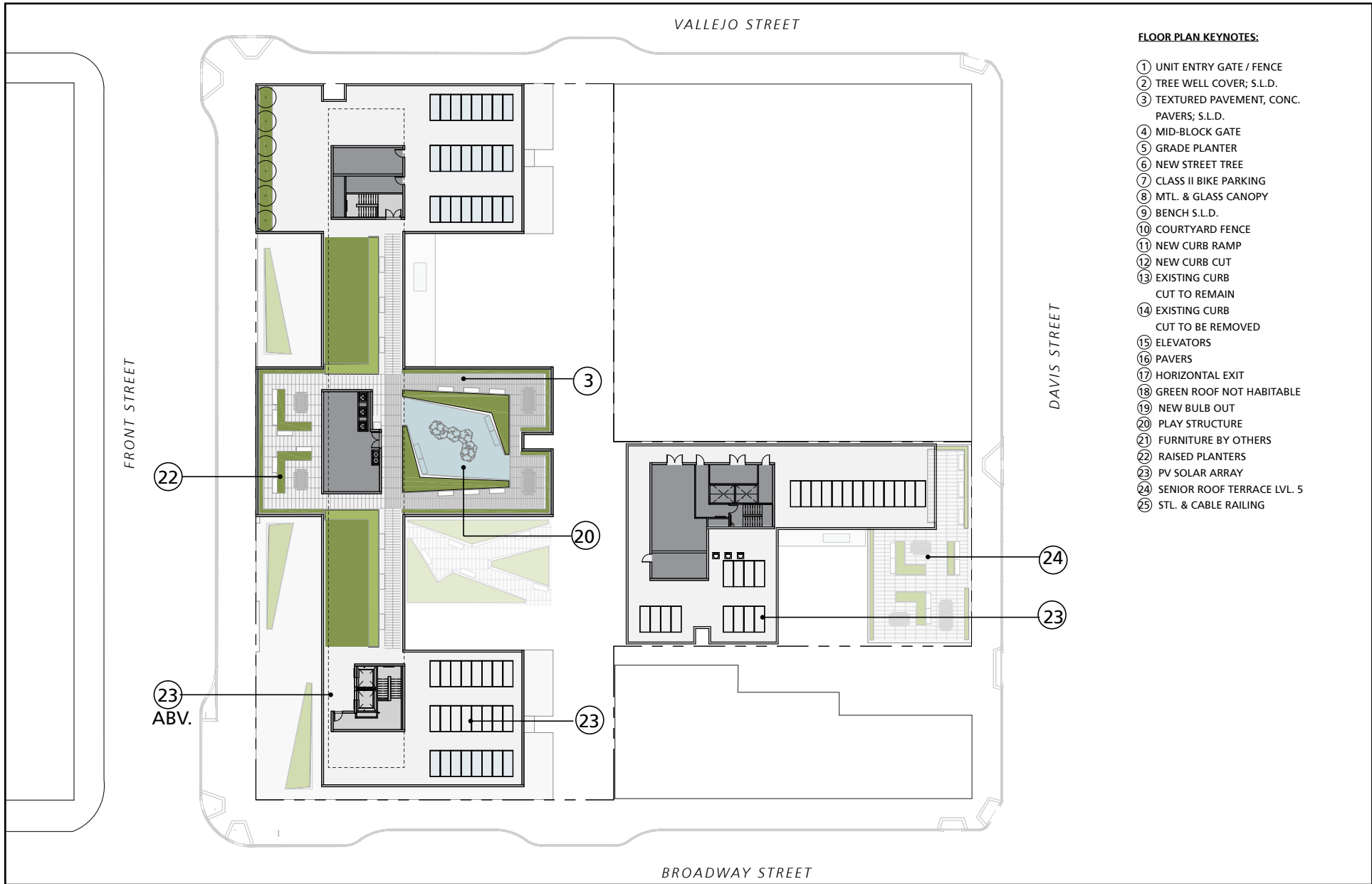


Source: The John Stewart Company, Bridge Housing, Leddy Maytum Stacy Architects, February 26th, 2018.

88 BROADWAY & 735 DAVIS STREET PROJECT INITIAL STUDY

Case No. 2016-007850ENV

FIGURE 8
Proposed Level 6 Plan



Source: The John Stewart Company, Bridge Housing, Leddy Maytum Stacy Architects, February 26th, 2018.

88 BROADWAY & 735 DAVIS STREET PROJECT INITIAL STUDY

Case No. 2016-007850ENV

FIGURE 9
Proposed Roof Plan



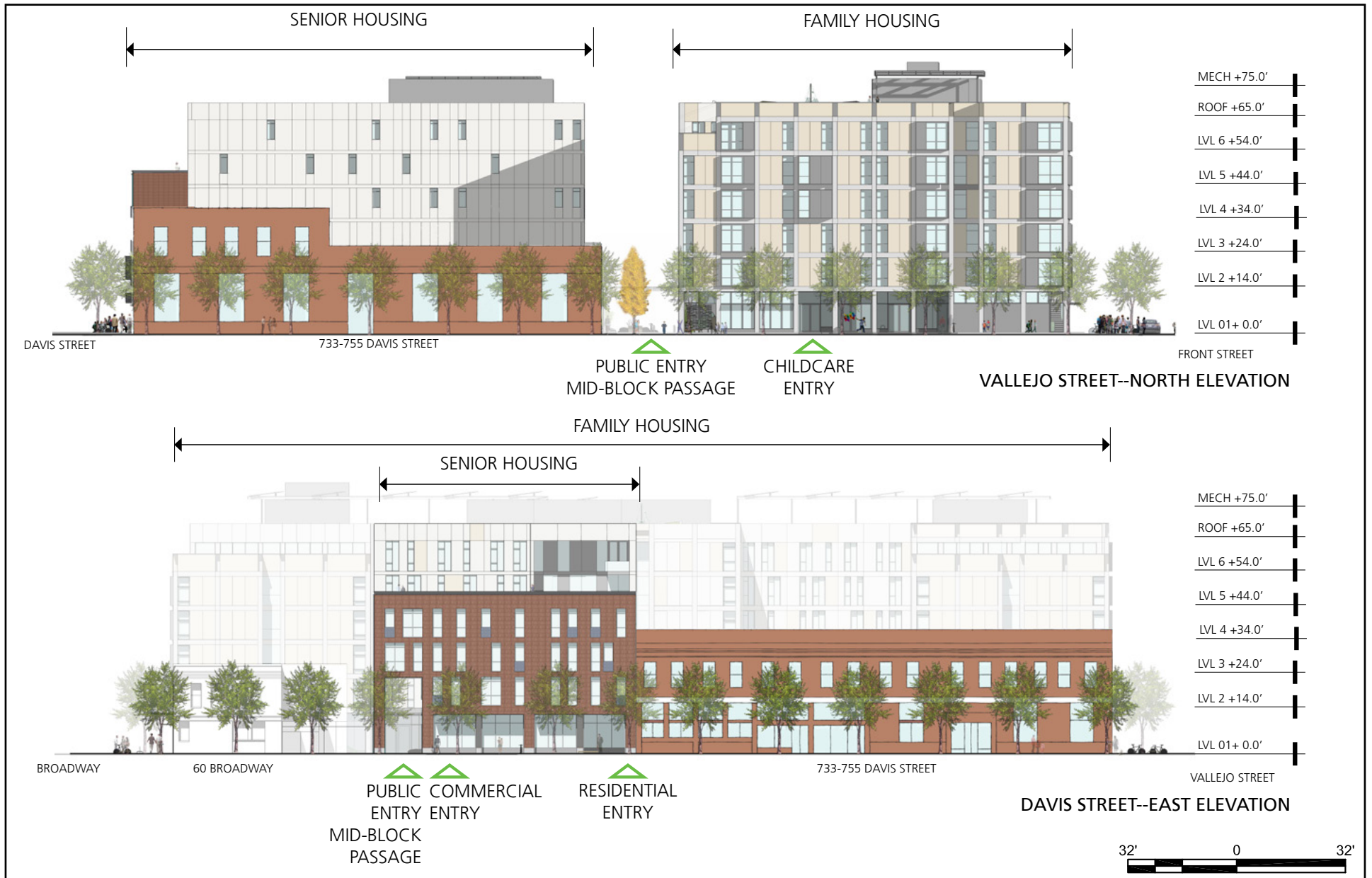
Source: The John Stewart Company, Bridge Housing, Leddy Maytum Stacy Architects, February 26th, 2018.

88 BROADWAY & 735 DAVIS STREET PROJECT INITIAL STUDY

Case No. 2016-007850ENV

FIGURE 10

Proposed South and West Elevations



Source: The John Stewart Company, Bridge Housing, Leddy Maytum Stacy Architects, February 26th, 2018.

88 BROADWAY & 735 DAVIS STREET PROJECT INITIAL STUDY

Case No. 2016-007850ENV

FIGURE 11

Proposed North and East Elevations



Source: The John Stewart Company, Bridge Housing, Leddy Maytum Stacy Architects, February 26th, 2018.

88 BROADWAY & 735 DAVIS STREET PROJECT INITIAL STUDY

Case No. 2016-007850ENV

FIGURE 12

Perspective A: Davis Street/Broadway Intersection



Source: The John Stewart Company, Bridge Housing, Leddy Maytum Stacy Architects, February 26th, 2018.

88 BROADWAY & 735 DAVIS STREET PROJECT INITIAL STUDY

Case No. 2016-007850ENV

FIGURE 13

Perspective B: Front Street/Broadway Intersection



Source: The John Stewart Company, Bridge Housing, Leddy Maytum Stacy Architects, February 26th, 2018.

88 BROADWAY & 735 DAVIS STREET PROJECT INITIAL STUDY

Case No. 2016-007850ENV

FIGURE 14

Perspective C: Front Street/Vallejo Street Intersection



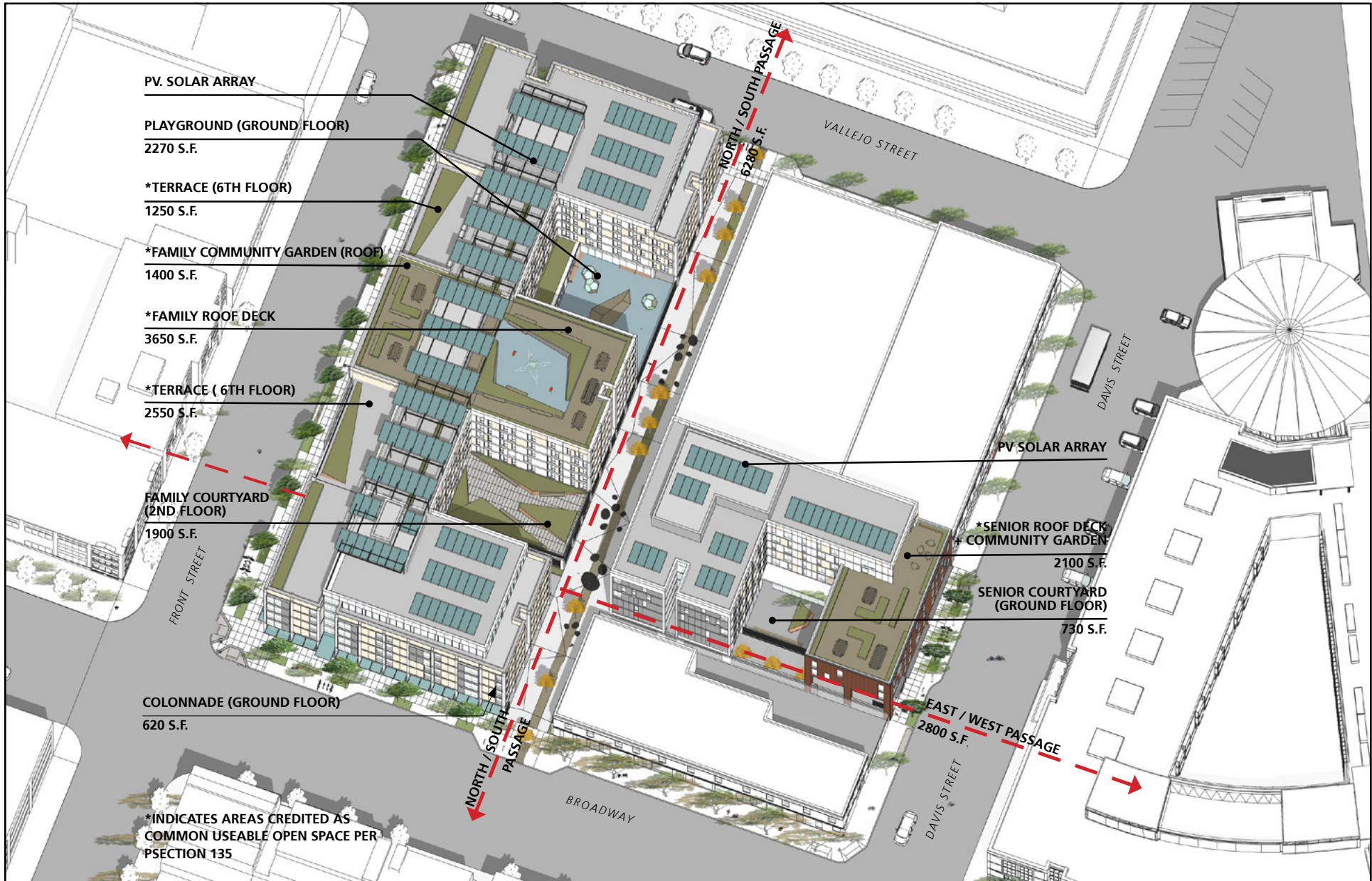
Source: The John Stewart Company, Bridge Housing, Leddy Maytum Stacy Architects, February 26th, 2018.

88 BROADWAY & 735 DAVIS STREET PROJECT INITIAL STUDY

Case No. 2016-007850ENV

FIGURE 15

Perspective D: Vallejo Street/Davis Street Intersection



Source: The John Stewart Company, Bridge Housing, Leddy Maytum Stacy Architects, February 26th, 2018.

88 BROADWAY & 735 DAVIS STREET PROJECT INITIAL STUDY

Case No. 2016-007850ENV

FIGURE 16
Open Space