



SFUSD's Approach to Fall Learning Update

July 24, 2020

Agenda for Today

- Overview of Fall Learning School Planning Process
- Information Collection
 - Stakeholder Engagement
 - Teaching & Learning
 - Personnel
 - Logistics
- Recommendation and Next Steps

Overview of Fall Learning School Planning Process

Core Values



STUDENT
CENTERED



FEARLESS



UNITED



SOCIAL
JUSTICE



DIVERSITY
DRIVEN

WE ARE



SFUSD

Our Mission

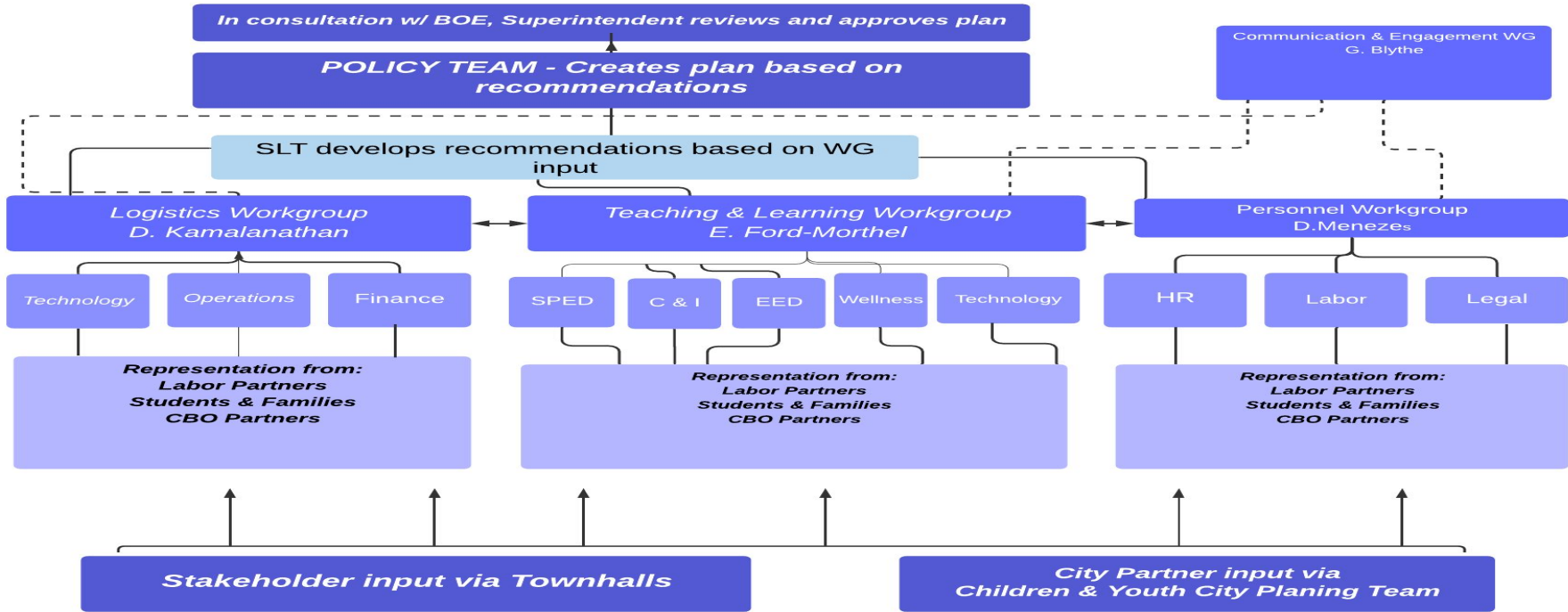
Every day we provide each and every student the quality instruction and equitable support required to thrive in the 21st century.

Goal of Fall Learning Planning Process

The ultimate goal of the process is for the Policy team to get answers to four questions:

- 1) What are our guiding principles for making decisions? (equity, flexibility, health and safety, learning and student well-being)
- 2) What are OUR real possible learning options?
- 3) Do we have the logistics, staff agreement and learning strategies to make any, all, none of the options a reality?
- 4) What is our July 28th recommendation to the Board of Education for what learning looks like beginning August 17th?

Approach to Fall Learning process

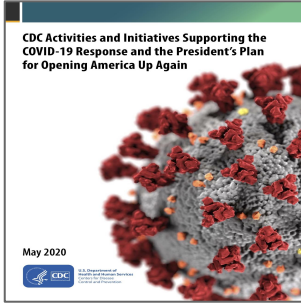


Timeline

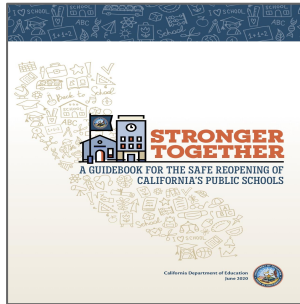


Information Collection

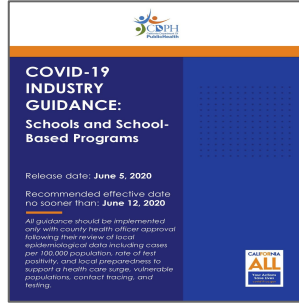
Guiding Documents



[Centers for Disease Control and Prevention \(CDC\)](#)



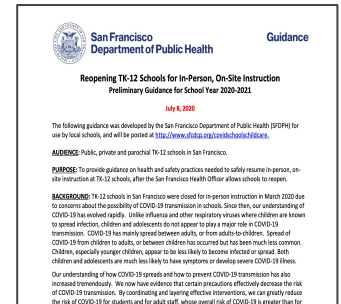
[CA Department of Education \(CDE\)](#)



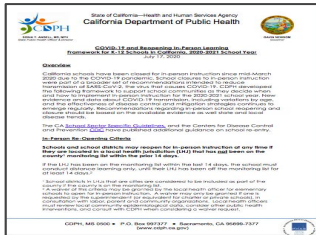
[CA Department of Public Health \(CDPH\)](#)



[Assembly Bill 77 \(AB77\)](#)
[Senate Bill 98 \(SB98\)](#)



[SFDPH Guidance](#)



[CDPH In-Person Re-Opening Directive](#)



[California Interscholastic Sports Federation](#)

Governor Newsom's July 17 Order to reopening.

Key points:

- Each county must be off the state's watch list for 14 consecutive days to allow schools to reopen
- Guidance addresses protective equipment, cleaning protocols, and staff/teacher preparation

The mandates mark a shift from leaving decisions over closing and reopening schools largely in the hands of local school district officials in consultation with county departments of health. The California Department of Public Health will now play a stronger role in setting the criteria for reopening school facilities. - [EdSource](#)

SFDPH
Preliminary
Guidance for
when schools
re-open for
school Year
20-21

Purpose: To provide guidance on health and safety practices needed to safely resume in-person, onsite instruction at TK-12 schools, *after the San Francisco Health Officer allows schools to reopen in alignment with CDPH directive.*

SB 98: Instructional Minutes

For the 2020–21 school year, the minimum school day for a local educational agency is as follows:

- (a) 180 instructional minutes in kindergarten.
- (b) 230 instructional minutes in grades 1 to 3, inclusive.
- (c) 240 instructional minutes in grades 4 to 12, inclusive.
- (d) 180 instructional minutes for pupils in grades 11 and 12 that are also enrolled part time in classes of the California State University or the University of California for which academic credit will be provided upon satisfactory completion of enrolled courses.
- (e) 180 instructional minutes for any pupil who is also a special part-time student enrolled in a community college.. and who will receive academic credit upon satisfactory completion of enrolled courses.
- (f) 180 instructional minutes for pupils enrolled in a continuation high school.

SB 98- Distance Learning

(2) Distance learning may be offered under either of the following circumstances:

(A) On a local educational agency or schoolwide level as a result of an order or guidance from a state public health officer or a local public health officer.

(B) For pupils who are medically fragile or would be put at risk by in-person instruction, or who are self-quarantining because of exposure to COVID-19.

a) The compulsory education requirements described in Section 48200 continue to apply for the 2020–21 school year.

(b) A local educational agency shall offer in-person instruction to the greatest extent possible.

(c) For the 2020–21 school year, for purposes of the requirement on school districts to offer 180 instructional days per school year pursuant to Section 46208..., an instructional day is a day in which all pupils are scheduled for the length of the day established by the governing board or body of the local educational agency in a classroom under the immediate supervision of a certificated employee or in distance learning that meets the minimum requirements described in this part.

“As schools begin to plan for reopening, they must actively and authentically engage parents and caregivers, families, and students in the decision-making process in order to build trust and credibility for any plans that are implemented. Establish a common protocol for regular and consistent communication to students and families. Consider a data management platform to collect, house, and disaggregate community input data on a regular basis.”

- CDE Guidance on Reopening Schools

- 7 Town Hall Sessions
- Work Groups
 - Teaching & Learning
 - Logistics
 - Personnel
- Staff Survey
- Family Survey

Stakeholder Engagement

Communication & Stakeholder Engagement

Town Hall + Survey Planning Input

Gentle Blythe, Lead

SFUSD Departments	Advisory Committees	Community Partners
<ul style="list-style-type: none"> ● African American Achievement & Leadership Initiative ● Communications ● Community Partnerships ● Family Partnerships & Empowerment ● Indian Education ● Multilingual Pathways ● Pacific Islander Family Coordinator ● Policy & Operations ● Special Education 	<ul style="list-style-type: none"> ● African American Parent Advisory Council ● Community Advisory Committee for Special Education ● District English Learners Advisory Committee ● Indian Education Parent Advisory Council ● Parent Advisory Council ● Student Advisory Council 	<ul style="list-style-type: none"> ● 2nd District PTA ● Chinese Progressive Association ● Mission Economic Development Association / Mission Promise ● Our Children Our Families Council (OCOF) ● Parents for Public Schools ● PODER ● SF Beacon Initiative ● SF Dept. of Children, Youth & Families (DCYF)

Town Hall Dates

7/6/20 3:00 - 4:30

Teacher Town Hall

7/7/20 11:00 - 12:30

Staff Town Hall

7/7/20 6:30 - 8 PM

Family Town Hall (Cantonese)

7/8/20 10:30 - 12:00

CBO Partners Town Hall

7/8/20 6:30 - 8 PM

Family Town Hall (English Language +)

7/9/20 6:30 - 8 PM

Family Town Hall (Spanish Language)

7/9/20 1:00 - 2:30 PM

Student Town Hall

SFUSD Fall Learning Town Halls:
Participant Summary (Thought Exchange data)

7 Town Halls across **4** days

 **16,030** thought participants (cumulative)*

 answered **13** questions;

 shared **23,898** thoughts;

 and rated **376,418** thoughts

*Includes participation outside of town hall events



Exchange participants during Town Halls: More than 4,000 in Family Town Halls, more than 1,200 in the Staff and Teacher/Paraeducator, hundreds at the Student and Community Partner Town Hall

Number of Thought Exchange Participants at SFUSD's Learning Town Halls

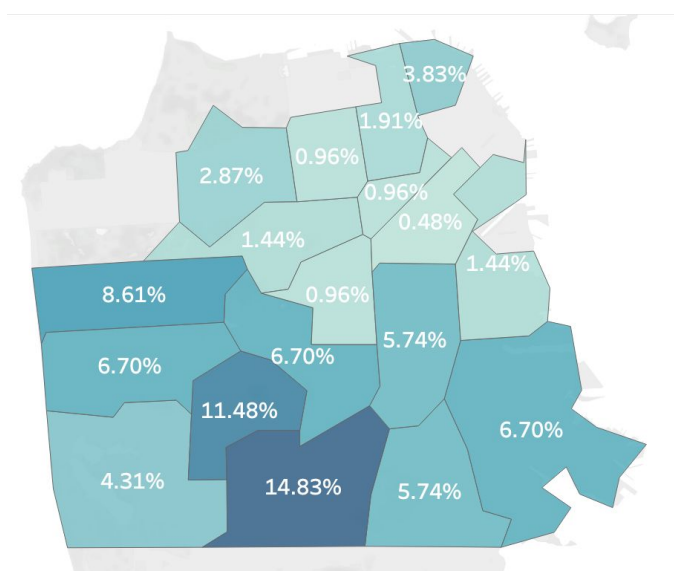
Event	Count of Participants
Teacher and Paraeducator Town Hall	923
Staff Town Hall	334
Cantonese Town Hall for Families	602
Community Partners Town Hall	264
English Town Hall for Families	3,049
Student Town Hall	210
Spanish Town Hall for Families	382

Source: Thought Exchange Account Level Utilization Report. Date: Data extracted 7/10/20. Definition: Number of participants is based on the highest number of participants for any one Thought Exchange question during a given Town Hall event (there were 2-4 per event). "Participant" includes anyone who agreed to the Thought Exchange terms of use and entered the Thought Exchange platform. Anyone could participate in any Town Hall. YouTube and SF Gov TV viewer data not included.

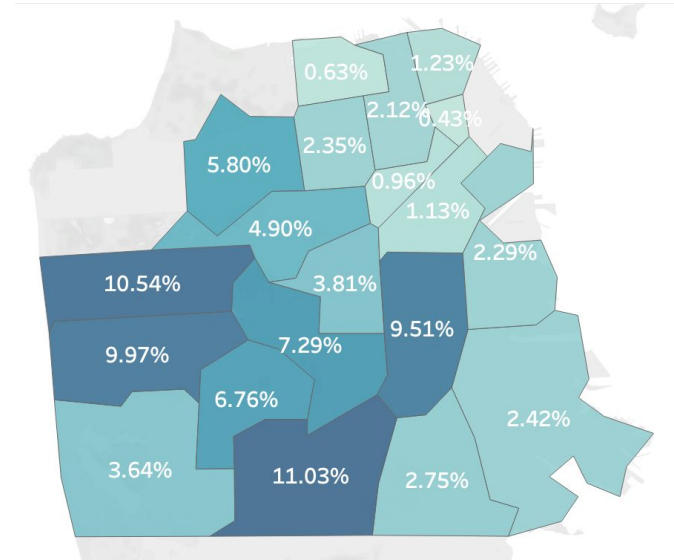


Town Hall Participants by ZIP code

Students (n = 210)



Families (n = 3,049)



Source: Thought Exchange Discover Dashboard. **Date:** Data extracted on July 9. **Definition:** Number of participants is based on the highest number of participants for any Thought Exchange during a given Town Hall event (there were 2-4 per event) for those events at which participants had the option of sharing their ZIP codes. “Participant” includes anyone who agreed to the Thought Exchange terms of agreement and entered the Thought Exchange platform. Anyone could participate in any Town Hall.

Themes that emerged from the Town Halls across all stakeholder groups

Across multiple stakeholder groups, the top 5 themes can be summarized as regarding:

1. Safety

Examples: testing, asymptomatic transmission, outbreaks, social distancing, vulnerable populations

2. Consistency in distance learning

Examples: district wide distance learning plans to reduce variability across sites, access to training, access to technology, plan for students who are falling behind academically

3. Choice

Examples: working from home, in-person, hybrid, distance learning

4. Equity

Examples: increase support for mental health, increase connection with African American, Hispanic/Latino, SpEd, EL students (among other groups)

5. Social interaction

Examples: more interaction between students, between staff, between students and staff

Top questions that emerged from the Town Halls across all stakeholder groups

Safety

What about district employees who may be at higher risk of infection and cannot return to work safely as others?

What happens if students/or staff members get COVID once school reopens?

How are you going to make sure students who don't normally listen stay 6 feet away?

Distance learning

Will teachers get taught to do distance learning better?

What will grading look like?

How to keep students engaged in learning and feeling valued for their work?

Transportation

How will we go to school if there are no bus lines?

Choice

Can students and teachers choose which option (in person...hybrid...stay home 100%) they feel is best?

Can we choose to do online learning even if district decides to go in-person?

Teaching & Learning Members

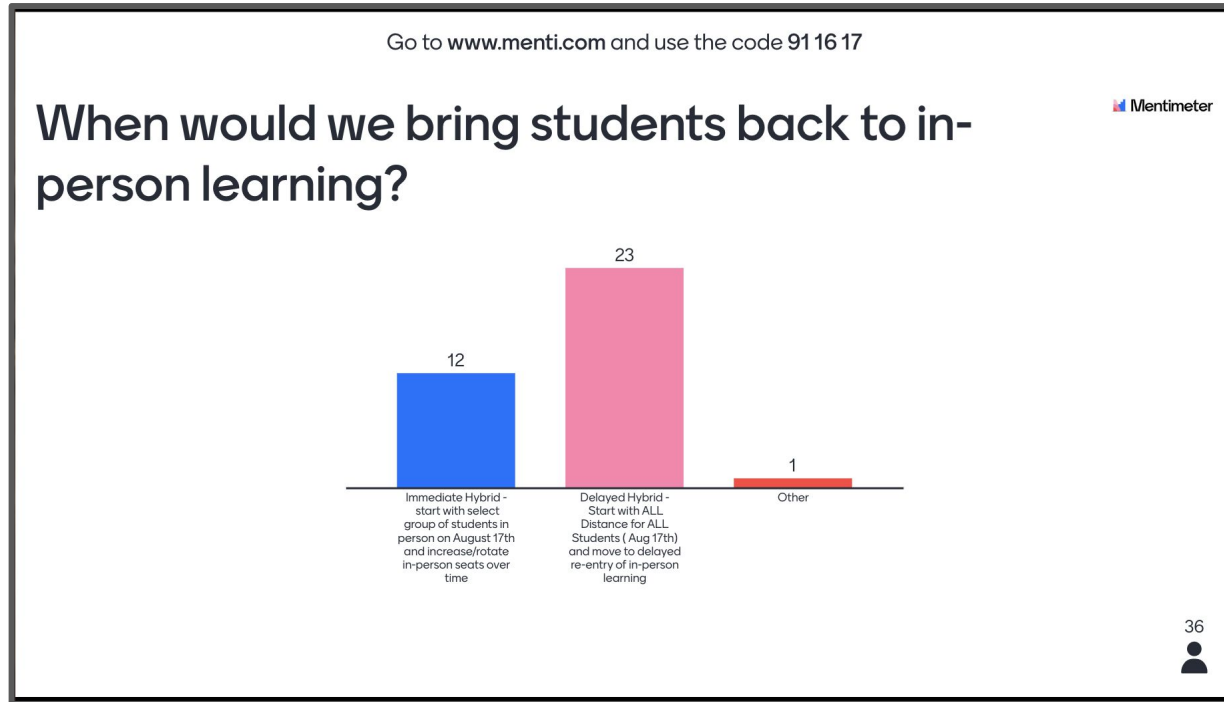
Enikia Ford-Morthel - Lead
Geri Almanza - UE
Donny Aoieong-SEIU
Ana Avilez - DELAC
Lorraine Bowser-SEIU
Megan Caluza - UE
Michelle Cody - UE
Silvia Cordero, UA
Melissa Dodd, DoT
Shavonne Foster - Student
Takija Gardner - CBO
Phil Halperin - Community
Kevin Hartzog - UE
Betzabe Herrera - Student
Sharon In-PAC

Dr. Nicole Priestly, C&I
Mele Lau-Smith, SFCSD
Angie Miller -Legal
Latoya Pitcher -EDD CAC
Jean Robertson-SPED
Patricia Ross- UE
Nelly Sapinski - CBO
Maria Su - SF City
Lance Tagamori - UA
Kathleen Walker -UE
Stanley Wong- Local 21
Meenoo Yashar, EED
Ritu Khanna, RPA

Teaching & Learning

- Participated in 2 Day Design Sprint to Rethink School, followed by 3 working group convenings
- Reflected on our learnings during **distance** education (based on fishbowl, surveys, data review and other feedback)
 - *Identified what we want to keep and/or expand*
 - *Identified what we want to abandon or stop*
 - *Identified what we want to initiate or start*
- Identified Guiding Principles
 - *Discussed factors for students, staff, and families should be considered as we plan for teaching and learning in the Fall*
- Analyzed Constraints and Considerations based on guidance documents
- Discussed/Considered practical options for **in-person** for **distance** and **hybrid** learning models
- Informed and evaluated hybrid reopening options

Pulse Check - TK-12



Logistics Members

Dawn Kamalanathan, Lead
Efrain Barrera -CBO
Don Blasky - CBO
Lynne Bourgault, Legal
Michelle Camp—UESF
Kathy Correa - Student
Michelle Delaney - PAC
Melissa Dodd, DoT
Reynaldo Dulaney -UESF
Dina Edwards - UASF
Pegah Faed -SF City
Alida Fisher, SPED CAC
Melanie Anton Gordon- Indian PAC
Andrea Haun - UESF

Mele Lau-Smith/Mary Jue, SFCSD
Myong Leigh, P&O
David Lanham - LOCAL 21
Erin Lynch, UASF
Ann Maria Mahina Indian Ed. PAC
Anthony Mills - SEIU
Orla O'keeffe, P&O
Kevin Robinson - AAPAC
Meghan Wallace, Business Services
Shellie Wiener - SEIU

Logistics

- Shared guidance from CDC, CDE, CPH
- Introduced stakeholders to key facilities constraints shaping in person learning opportunities
 - SFUSD's 300 Custodians can clean *and* disinfect about **3.2 million sq ft daily**. SFUSD's total school site square footage is close to 8 million sq ft.
 - Public transportation is projected to operate **at 30% of normal capacity** by end of August.
 - SFUSD's transportation could require **up to double the FY 2021 budget** to serve existing students at currently assigned sites.

Logistics

- Themes running through feedback:
 - Need clear roles & responsibilities for cleaning and disinfecting; how much will educators be asked to do on a daily basis?
 - Concern for differently abled students, and how social distancing might negatively impact their experience
 - Are there ways to support families and kids with “enrichment options” to support distance learning? How can/should outdoor learning occur?

Personnel Members

Daniel Menezes, Lead
Joan O'Neill, HR
Teresa Arriaga - CBO
Jessica Beard - LOCAL 21
Joni Chu - CBO
Rebecca Hensler - UESF
Danielle Houck, Legal
Greg John, Labor
Naomi Laguana - PAC
Mele Lau-Smith, SFCSD
Cecilia Yun Si Li - UESF
Lisa Miller - Indian Ed.
Lori Murakami - UESF
Rafael Picazo - SEIU
Antonae Robertson - SEIU
Mauricha Robinson - AAPAC
Mari Rutkin - Early Education
Sara Saldana - UASF
Jett Sandoval - Student

Personnel Working Group Update

Safety and Wellness of our staff was the dominant theme in the personnel working group

- We know that adult-to-adult transmission creates the highest risk for COVID-19 spread
- Taking age as just one example of what makes an adult high-risk for infection, large percentages of our staff are high risk (see next slide).
- Questions and concerns included more data about transmission rates in adult-to-adult versus child-to-adult scenarios and what a scenario would look like where a reopened school site or office has an outbreak.
- We must have clarity in roles and responsibilities in reopening, including:
 - Who is essential and must come back vs. who should work remotely, even among frontline staff?
 - How we will deliver clear training and protocols around best practices that minimize risk of infection for all staff?
 - How we will fully utilize our paraeducators in any reopening scenario?

Staff Age Distribution

Classification	<55	55+
UESF Certificated	81% (3,338)	19% (771)
UESF Classified	68% (1,102)	32% (509)
Substitutes	54% (562)	46% (477)
Student Nutrition Workers	45% (89)	55% (110)
Custodians	50% (162)	50% (162)
Local 21	71% (55)	29% (23)

[92 percent of COVID-19 deaths in the U.S. were of people ages 55 and older, as of April 27, according to the Centers for Disease Control and Prevention](#)

City Partnerships

Children and Youth Working Group

Led by DCYF Director Maria Su and Supervisor Matt Haney

Participating members:

City Agencies (DPH, City Administrator, DCYF, Rec & Park, Library, OCOF, Hope SF, Controller's Office, and SFMTA)
& SFUSD Staff

DPH & SFUSD subgroup

DPH staff and SFUSD Student & Support Services team to discuss health guidance and protocols

SFMTA & SFUSD subgroup

SFMTA & SFUSD Transportation team to discuss transportation needs



City Administrator & SFUSD subgroup

City Administrator & SFUSD Facilities team to discuss facilities, staffing, and PPE materials needed to open.

Federal Support & Advocacy

- CARES Act: \$13 billion (out of \$3 trillion) was dedicated to nation's public education system
- HEROES Act / next federal relief package stalled in the U.S. Senate
- SFUSD is part of a coalition of urban public schools advocating for additional funds including:
 - \$175 billion in education stabilization funds
 - E-Rate funding to support student connectivity, and
 - \$25 billion between Title I and IDEA to support low-income students and students with disabilities

State Budget

34

State FY 2020-21 budget maintained K-12 budgets at prior year levels, including holding harmless for enrollment / attendance

Does not include a cost of living adjustment for baseline funding (Local Control Funding Formula), costing SFUSD about \$12 million

Includes one-time "learning loss" funds

In absence of additional federal stimulus funds, budget imposes \$12 billion of deferrals of payments to schools



Recommended Direction for Fall 2020

Recommendation
for what learning
looks like on
August 17th

***Distance
Learning initially
(phased return)**

***Gradual Return
/ Hybrid**

- All students will not be in-person on August 17
- Plan for Distance Learning for almost all students (phased return)
- Consider limited in-person school for small groups of priority students at a limited number of physical school locations
- Gradual Hybrid return once science and data suggest safe to do so

Distance Learning Considerations

Considerations for Strengthened Distance Learning from Town Halls & Work Group Sessions:

Build and strengthen relationships between families and students.

Ensure consistent and regular communication between home and school

Set consistent expectations for live interactions with teachers and staff

Instruction must connect students with each other and with instructor

Additional support needed for focal student groups

Instruction needs to be differentiated and attend to different types of learners

Access to technology and connectivity for families and staff; access to printed materials

Capacity building needed for students and families to navigate distance instruction

Attend to health and wellness



**NEXT
BIG THING
AHEAD**

Next steps

- Full Report to Board July 28
- Professional Development and Training for Scope and Sequence for distance learning
- Improved Attendance and Monitoring
- Survey Staff and Families regarding choice when phased return begins

Thank You!