



# RACING TO ZERO

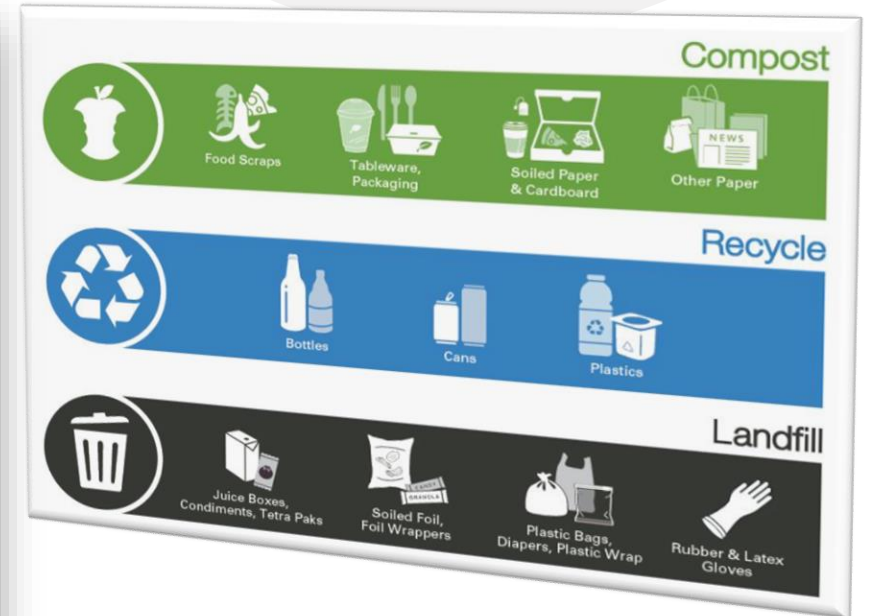
---

**REFUSE SEPARATION COMPLIANCE PLAN**

# PATH TO ZERO WASTE

The goal of 75% diversion from landfill and incineration was achieved two years ahead of schedule and at the Global Climate Action Summit, in September 2018, San Francisco updated the zero waste goal to these two pledges:

- Reduce municipal solid waste generation by 15% by 2030 (reducing what goes to recycling, composting, and trash).
- Reduce disposal to landfill and incineration by 50% by 2030 (reducing what goes in the black trash bins).



# LARGE REFUSE GENERATORS

---

- Department of Environment found that 60% of all disposed material from the City is recyclable or compostable.
- “Large Refuse Generator” means: facility has roll-off compactor service or generates 40 cubic yards or more of uncompacted refuse per week
- Audits to occur every three years – for City facilities from July through January
- If facility found to be out of compliance:
  - Facility must engage a Zero Waste Facilitator
    - Serves 24 months
    - Implements Remediation Plan
    - May request follow-up Audit

# REAL ESTATE DIVISION

## Large Refuse Generator (LRG) Portfolio

- **City Hall**  
540,127 sqft
- **Hall of Justice**  
478,135 sqft
- **Public Safety Building**  
170,976 sqft
- **1 South Van Ness**  
648,975 sqft
- **525 Golden Gate\***  
240,108 sqft (\*SFPUC Headquarters serviced by RED)

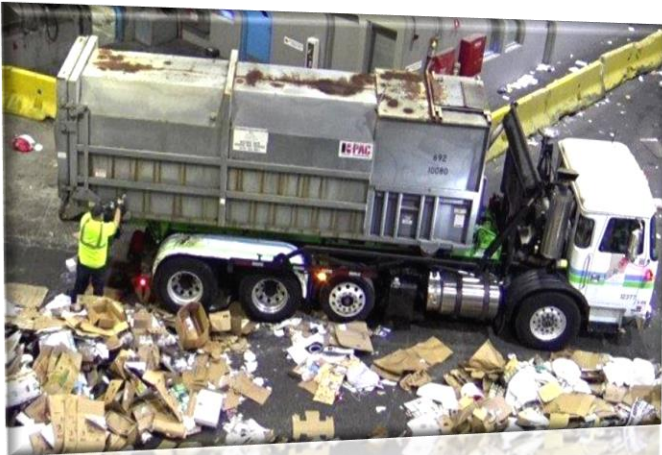







- Audits that find any of the three streams with volume contamination levels exceeding the levels in the table below are subject to audit failure

	Compostables	Recyclables	Trash
Maximum allowed levels of contamination	5%	10%	25%

- Auditor will use their best professional estimate in evaluating the volume of contamination in determining a “pass” or “fail”






# AUDIT RESULTS: HALL OF JUSTICE

Type of Waste	Date of Audit	Result
Recycling	11/18/2020	 Pass
Composting	12/11/2020	 Pass
Trash	11/3/2020	 Pass






# AUDIT RESULTS: PUBLIC SAFETY BUILDING

Type of Waste	Date of Audit	Result
Recycling	8/17/2021	 Pass
Composting	9/16/2021	 Pass
Trash	9/16/2021	 Pass



# AUDIT RESULTS: CITY HALL

Type of Waste	Date of Audit	Result
Recycling	7/26/2021	 Pass
Composting	7/12/2021	 Pass
Trash	8/30/2021	 !





Date  
08/30/2021

## Refuse Separation Compliance Ordinance: TRASH AUDIT

Time  
01:17 PM

Customer  
ADMINISTRATIVE SERVICES

Address  
1 DR CARLTON B GOODLETT PLACE

Account Number  
0853697

Service Level  
Eight 96 gallon bins, service twice a week.

### Trash Audit Results

Overall Load Condition\*  
**FAIL**

Contamination in Load  
Excessive Contamination

Evidence of Sorting  
Unclear

### Contaminants Observed in Trash

#### COMPOST Observed in Trash

- Soiled Paper Products
- Yard Waste
- Wood - Unpainted / Untreated
- Food Scraps
- Coated Cardboard
- Certified Compostable Products

- Other (see notes)
- C&D Debris
- Packaged Food
- Loose Textiles/Fabrics
- Chemicals / Paint
- Electronics / Universal Waste
- Other Hazardous Waste

#### RECYCLING Observed in Trash

- Glass
- Rigid Plastics - Misc.
- Metals - Misc.
- Misc. Recyclables
- Mixed Paper - Clean
- Clean Cardboard



1. Aluminum foil, paper cups, plastic lids, and clean paper belong in the Recycling. Soiled paper belongs in the Composting. Masks, foam, plastic film, and plastic bags belong in the Trash.



2. Mylar and plastic bags belong in the Trash. Aluminum cans belong in the Recycling. Soiled paper belongs in the Composting.



3. Latex gloves, plastic bags, plastic film, and masks belong in the Trash. Plastic bottles and aluminum foil belong in the Recycling. Soiled paper belongs in the Composting.



4. Clean paper, plastic containers, and aluminum foil belong in the Recycling. Soiled paper and compostable bags belong in the Composting. Plastic film and plastic bags belong in the Trash.



5. Plastic bottles belong in the Recycling. Compostable paper cups and soiled paper belong in the Composting. Plastic bags belong in the Trash.



6. Plastic bottles and clean paper belong in the Recycling. Compostable paper cups, untreated wood sticks, and soiled paper belong in the Composting. Plastic bags and soft plastic belong in the Trash.



Paper cups and plastic utensils belong in the Recycling.  
Compostable bags and soiled paper belong in the Composting.  
Mylar, plastic film, and plastic bags belong in the Trash.

#### Explanation of Load Condition

The load fail the audit due to a high volume of contamination such as plastic containers, paper cups, aluminum foil, soiled paper, clean paper, and aluminum cans.




#### Recommendations

- Materials such as food scraps, food-soiled paper, napkins, and paper towels, soiled cardboard, pizza boxes, coated cardboard, toilet paper rolls, items labeled “compostable” and yard trimmings belong in compost.
- Materials such as clean cardboard, clean paper, paper cups, glass bottles, metal cans, foil, and trays; rigid plastic containers, cups, bottles, jugs, utensils, and lids; gable-top cartons, and aseptic cartons belong in recycling.

Please direct all correspondence to:

[RSOcompliance@sfgov.org](mailto:RSOcompliance@sfgov.org)

# AUDIT RESULTS: 1 SOUTH VAN NESS

Type of Waste	Date of Audit	Result
Recycling	8/4/2021	 Pass
Composting	8/19/2021	 Pass
Trash	8/19/2021	 !



# IDENTIFIED CONTAMINATIONS IN LANDFILL WASTE



- Clean Papers
- Soiled Papers
- Disposable Utensils
- Food Scraps
- Disposable Plates And Cups



# REFUSE SEPARATION COMPLIANCE PLAN

1. Update list of Zero Waste Coordinators for each department within the facility.
  - Essential for communication in eliminating contamination from the refuse streams.
2. Share audit results and approved copy of plan.
3. Review contaminants identified in Waste Audit
  - Attributed to specific event/operation/vendor/behavior that can be corrected through direct communication?
4. Review current waste bin set-up
  - Eliminate all individual (single and dual) bins in offices/cubicles.
  - Set-up Central Refuse Collection stations containing bins for all three refuse streams in each department's space.
5. Provide containers with separate compartments to custodial staff for preliminary sorting.
  - Reduces contaminants in the waste transportation process.
6. Continue training custodial staff to recognize contaminants for reporting and sorting purposes.
7. Notify Custodial Service Manager and Building Manager of tenant areas with noticeable contamination.

# REAL ESTATE DIVISION ZERO WASTE TEAM



**JOHN ONTIVEROS**

**Zero Waste Facilitator (ZWF)**

- Improve existing source separation systems.
- Train tenants and staff about proper refuse separation.
- Monitor onsite refuse separation.
- Utilize data to address specific sources of contamination.
- Provide recommendations to improve the building's source separation.



**NAM LI**

**Custodial Manager**

**Zero Waste Coordinator for:**

- City Hall
- Hall of Justice
- Public Safety Building
- 1 South Van Ness



**VICTOR SERRATO**

**Custodial Supervisor**

**Zero Waste Coordinator for:**

- City Hall
- 525 Golden Gate



**JOE MARCHINI**

**Clean-A-Rama Maintenance**

**Zero Waste Liaison for:**

- 1 South Van Ness

**END OF PRESENTATION**

