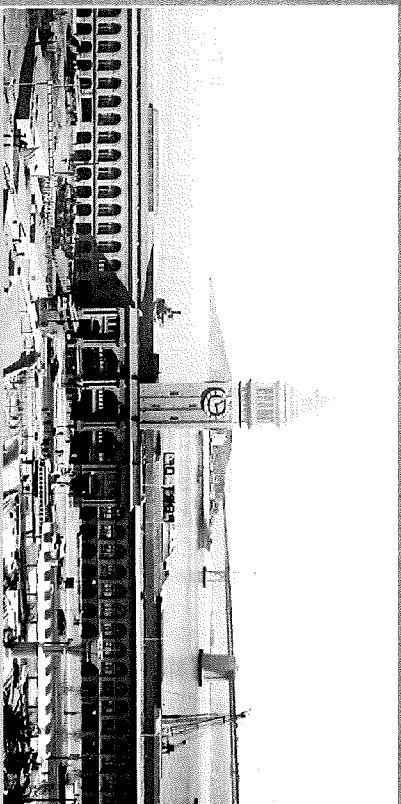


160126  
3/9/16  
BA



**ONESF**  
Building Our Future  
[oncsanfrancisco.org](http://oncsanfrancisco.org)

There's only one way to take care of it.



Animal Care and Control Shelter  
Amendment to Capital Plan FY 2016-2025  
Budget and Finance Committee  
March 9, 2016

# Animal Care and Control Capital Plan Amendment

Amends the Capital Plan to Fund the Animal Care and Control project with Certificates of Participation (COP) and requires an appropriation of funds for this project come before the Board in April 2016

## Adjustments to June 2016 Health and Safety Bond

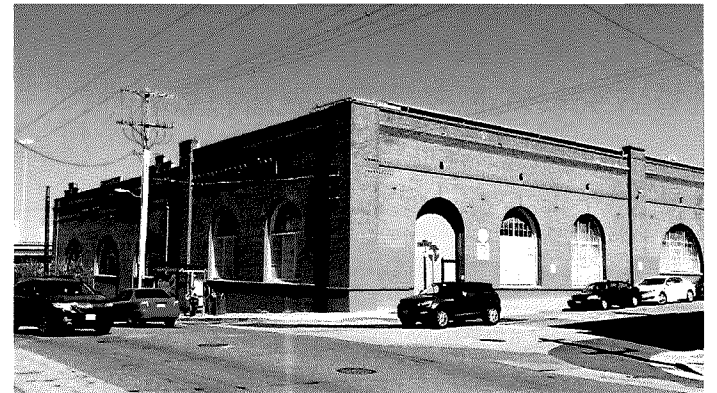
(Board of Supervisors File #151275 and 151276)

- Replaced Animal Care and Control project with funds to support DPH Health Clinics, Neighborhood Fire Stations, and Homeless Service Sites
- Approved by BOS on February 9 and February 23

## Board of Supervisors Resolution to Amend the Capital Plan

(Board of Supervisors File #160120)

- Capital Planning Committee considered item on February 29<sup>th</sup>
- Moves Animal Care and Control project to COP program
- Requires appropriation of funds for the Animal Shelter project be heard at the Board of Supervisors in April 2016



# Animal Care & Control Project

## Project purpose

- Reduce overcrowding in the City's deteriorating animal shelter and provide modern, safer care
- Provide a resilient facility to care for displaced animals in the event of an earthquake
- Ensure first-responder services can be delivered immediately after a major earthquake to assist residents who may have difficulty caring for their pets
- Enhance public health to help prevent the spread of communicable diseases such as ringworm and canine cough
- Provide improved education and training facilities for the public, animal care staff and volunteers

## Scope

- Renovate the historic building at 1401-1419 Bryant St. and turn it into a safe and humane Animal Care & Control shelter
- Consistent with project proposed in the Health and Safety Bond

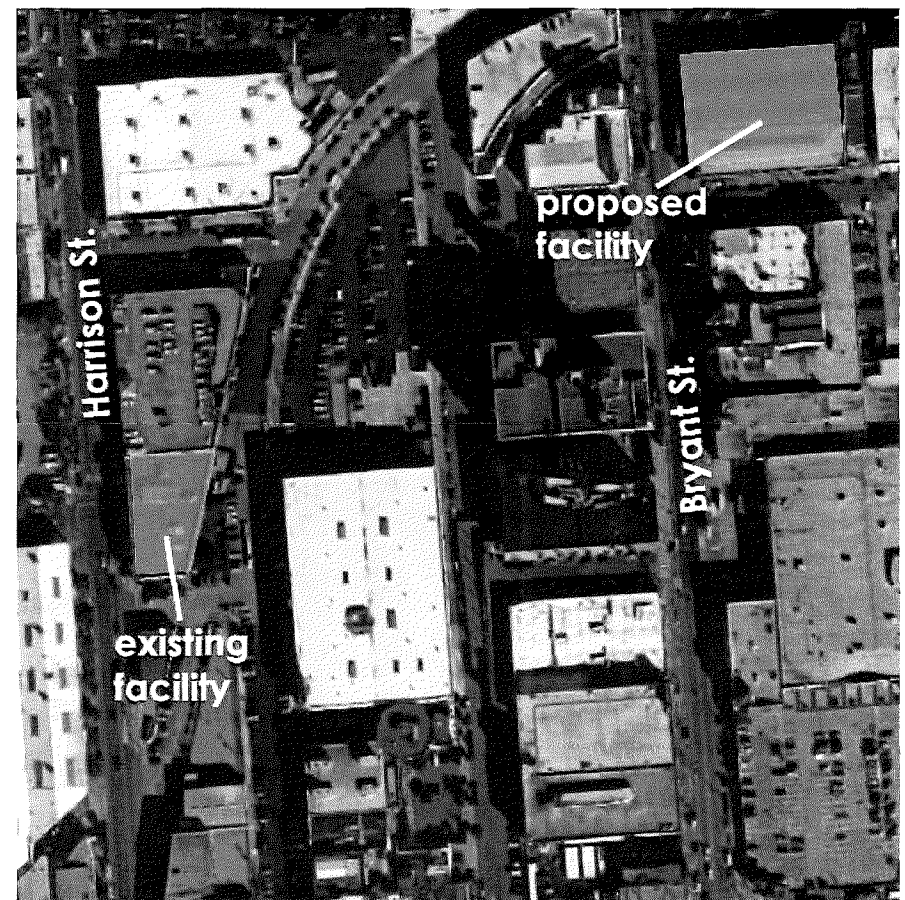


# Animal Care & Control Schedule & Budget

## Schedule and Budget

- Amount required for COPs was reduced from \$54 million to \$49 million because \$5 million in General Fund/Capital Planning Fund dollars will not be reimbursed
- Requires COPs in FY 2017

Animal Care & Control Shelter	
Start construction	May 2018
Construction complete	August 2020
Move in	October 2020
<b>Budget</b>	<b>\$54 million</b>
Capital Planning Fund Investment	\$5 million
COP Issuance Amount	\$49 million



# Revisions to the General Fund Debt Program

## Recommended Changes Since Capital Plan Adoption

- Rehabilitation and Detention Facility -- \$251 million moved from FY 2016 to FY 2017
  - Reflects project scope (-38 million) adopted by Board on July 22, 2015 for the SB 863 funding application (Board of Supervisors File #150701)
  - Adds year of cost escalation (\$11 million) to enable the Re-envisioning the Jail Replacement Project Working Group to complete its assessment
- Funds Animal Care and Control Project -- \$49 million in FY 2017

<b>General Fund Debt Program</b>				
<b>(Dollars in Millions)</b>				
		<b><i>Proposed Debt Issuance</i></b>	<b><i>Current As Amended</i></b>	
FY <del>2016</del> 2017	SHF Rehabilitation and Detention Facility	278	278	251
FY <del>2016</del> 2017	HOJ Site Acquisition	8	8	8
FY 2017	Animal Care and Control Shelter	-	-	49
FY 2019	Adult Probation Relocation from HOJ	59	59	59
FY 2019	DPH Admin Building Relocation	60	60	60
FY 2021	DA and SFPD Relocation from HOJ	227	227	227
FY 2021	HOJ Land Purchase, Demolition & Enclosure	48	48	48
FY 2024	JUV Admin Building Replacement	107	107	107
FY 2025	Yard Consolidation	100	100	100
<b>General Fund Debt Total</b>			<b>\$886</b>	<b>\$908</b>

Proposed COP Program for the Amended City and County of San Francisco FY 2016-2025 Capital Plan (see page 11 of the Capital Plan at <http://onesanfrancisco.org/fy2016-25-ten-year-capital-plan-2/> )



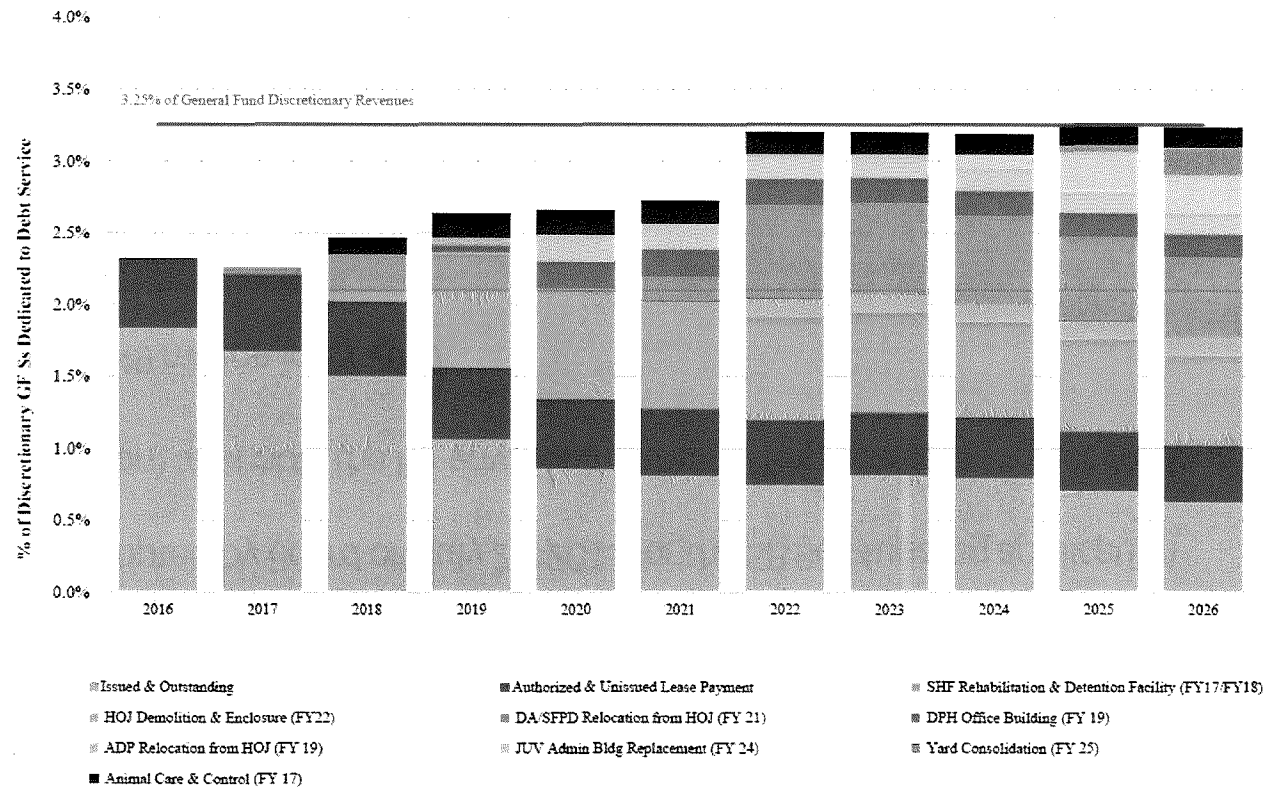
# Implications for COP Program

## General Fund Debt Program/COP Issuance Graph

- Stays within the Capital Plan of limiting debt service payments to less than 3.25% of General Fund Discretionary Revenue

### General Fund Debt Service and Long-Term Lease Obligations FY 2016-2026

Animal Care & Control Revision to Capital Plan



# Questions



