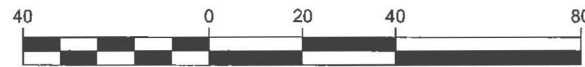


LEGEND

- PROPERTY LINE
- RIGHT OF WAY LINE
- NEW CURB LINE

KEY MAP

GRAPHIC SCALE



1 inch = 40 feet



APPROVED

Bruce R. Storrs

BRUCE R. STORRS
CITY & COUNTY SURVEYOR

6/12/2017

DATE

CITY AND COUNTY OF SAN FRANCISCO

DEPARTMENT OF PUBLIC WORKS

OFFICIAL SIDEWALK CHANGE ALONG PANAMA & NIANTIC STREETS
FRONTING APN 7178-001

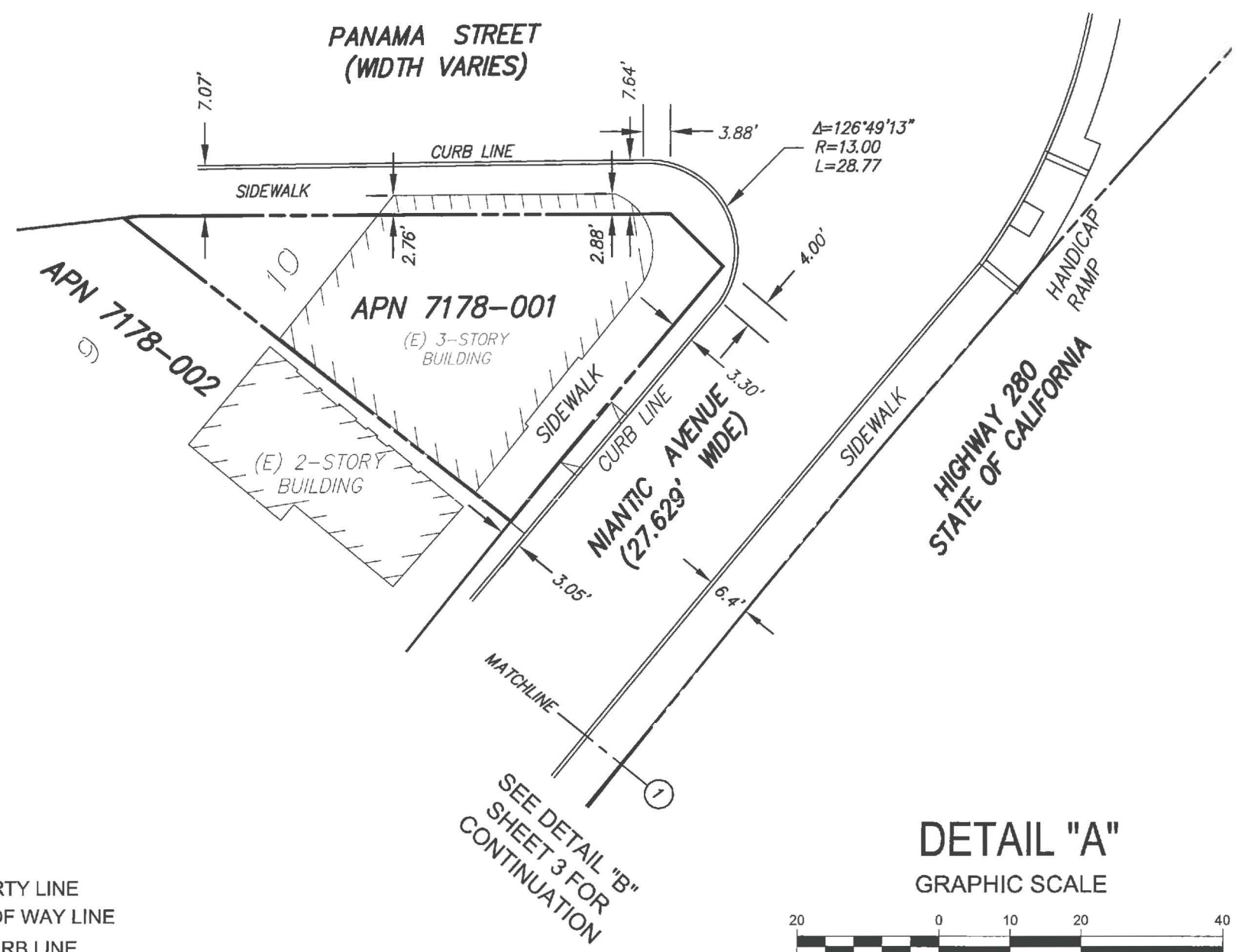
FILE:

Q-20-927

SHEET 1 OF 3

SCALE: 1" = 40'

CHANGE

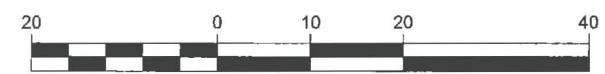


LEGEND

- PROPERTY LINE
- RIGHT OF WAY LINE
- NEW CURB LINE

DETAIL "A"

GRAPHIC SCALE



1 inch = 20 feet



APPROVED

BRUCE R. STORRS
 CITY & COUNTY SURVEYOR

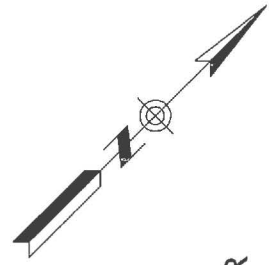
DATE

CITY AND COUNTY OF SAN FRANCISCO

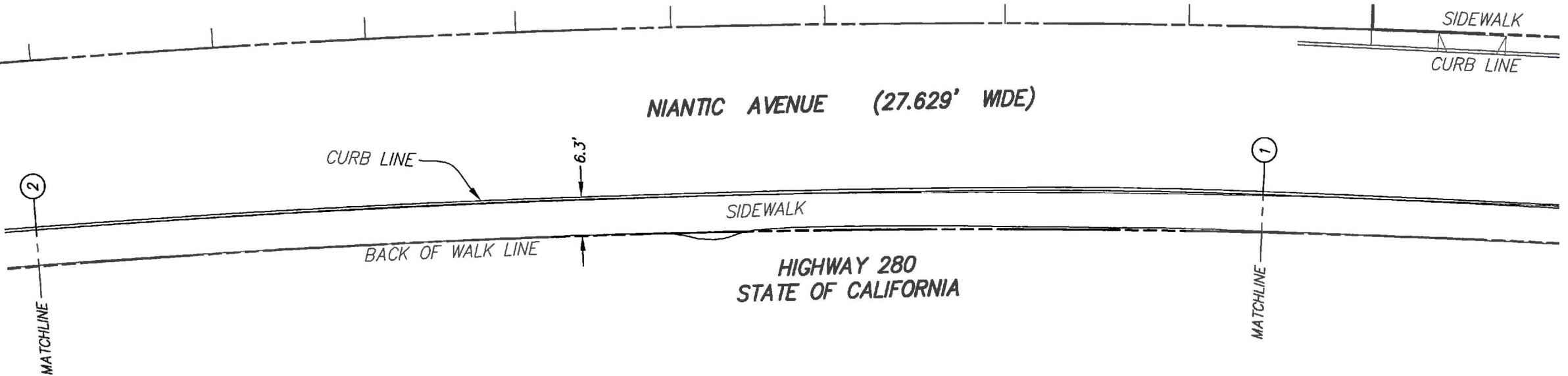
DEPARTMENT OF PUBLIC WORKS

OFFICIAL SIDEWALK CHANGE ALONG PANAMA & NIANTIC STREETS
 FRONTING APN 7178-001

FILE:	Q-20-927	SHEET 2 OF 3	SCALE: 1" = 20'	CHANGE
-------	----------	--------------	-----------------	--------



SEE DETAIL "C"
THIS SHEET FOR
CONTINUATION



SEE DETAIL "A"
SHEET 2 FOR
CONTINUATION

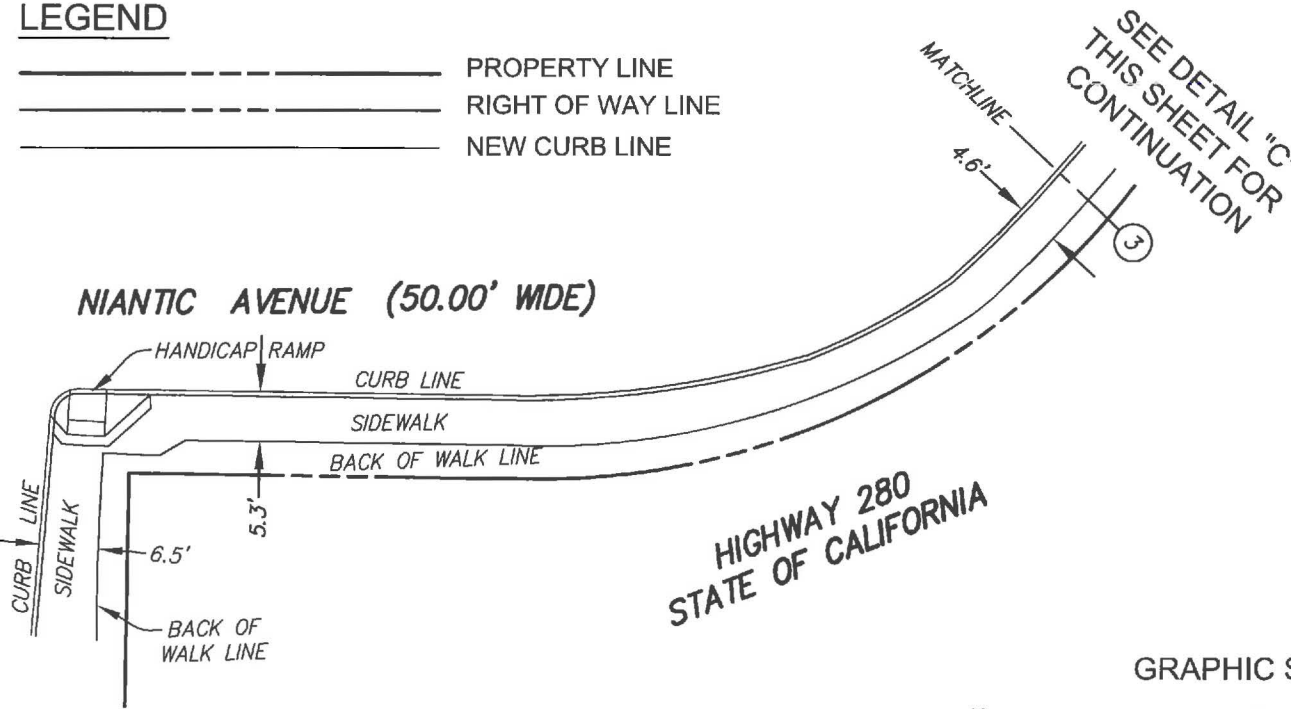
DETAIL "B"

LEGEND

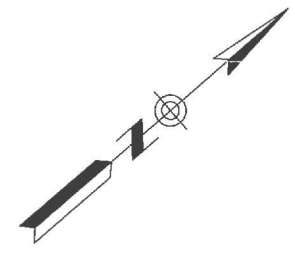
- PROPERTY LINE
- - - RIGHT OF WAY LINE
- NEW CURB LINE



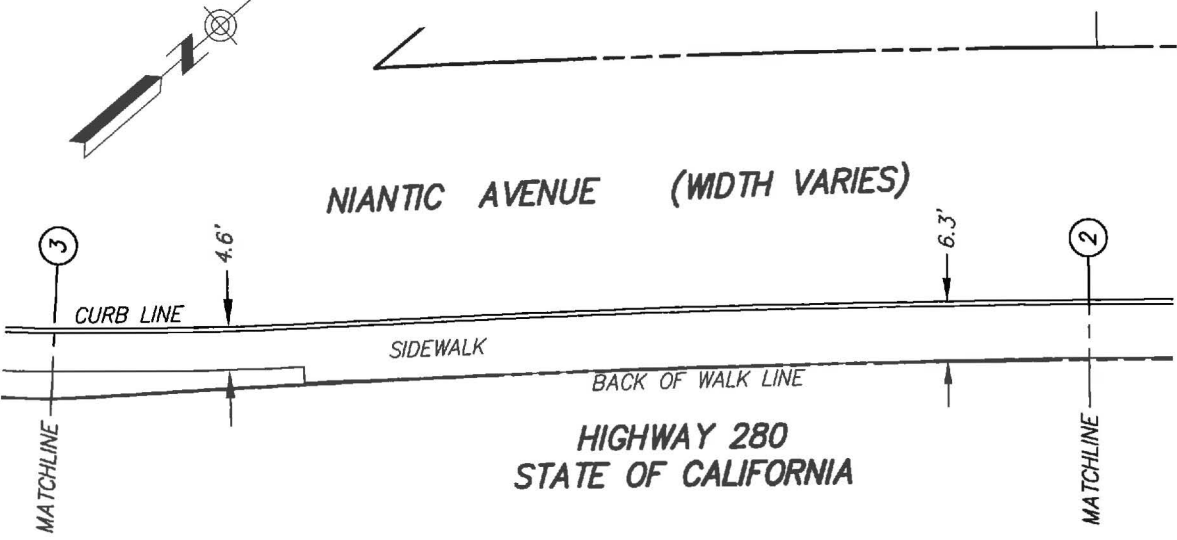
ST. CHARLES AVENUE
(50.00' WIDE)



DETAIL "D"



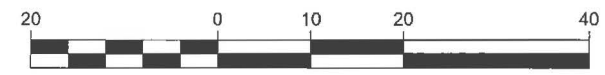
SEE DETAIL "D"
THIS SHEET FOR
CONTINUATION



SEE DETAIL "B"
THIS SHEET FOR
CONTINUATION

DETAIL "C"


GRAPHIC SCALE



1 inch = 20 feet



APPROVED


 BRUCE R. STORRS
 CITY & COUNTY SURVEYOR

6/12/17
 DATE

CITY AND COUNTY OF SAN FRANCISCO

DEPARTMENT OF PUBLIC WORKS

OFFICIAL SIDEWALK CHANGE ALONG PANAMA & NIANTIC STREETS
 FRONTING APN 7178-001

FILE:	Q-20-927	SHEET 3 OF 3	SCALE: 1" = 20'	CHANGE
-------	----------	--------------	-----------------	--------