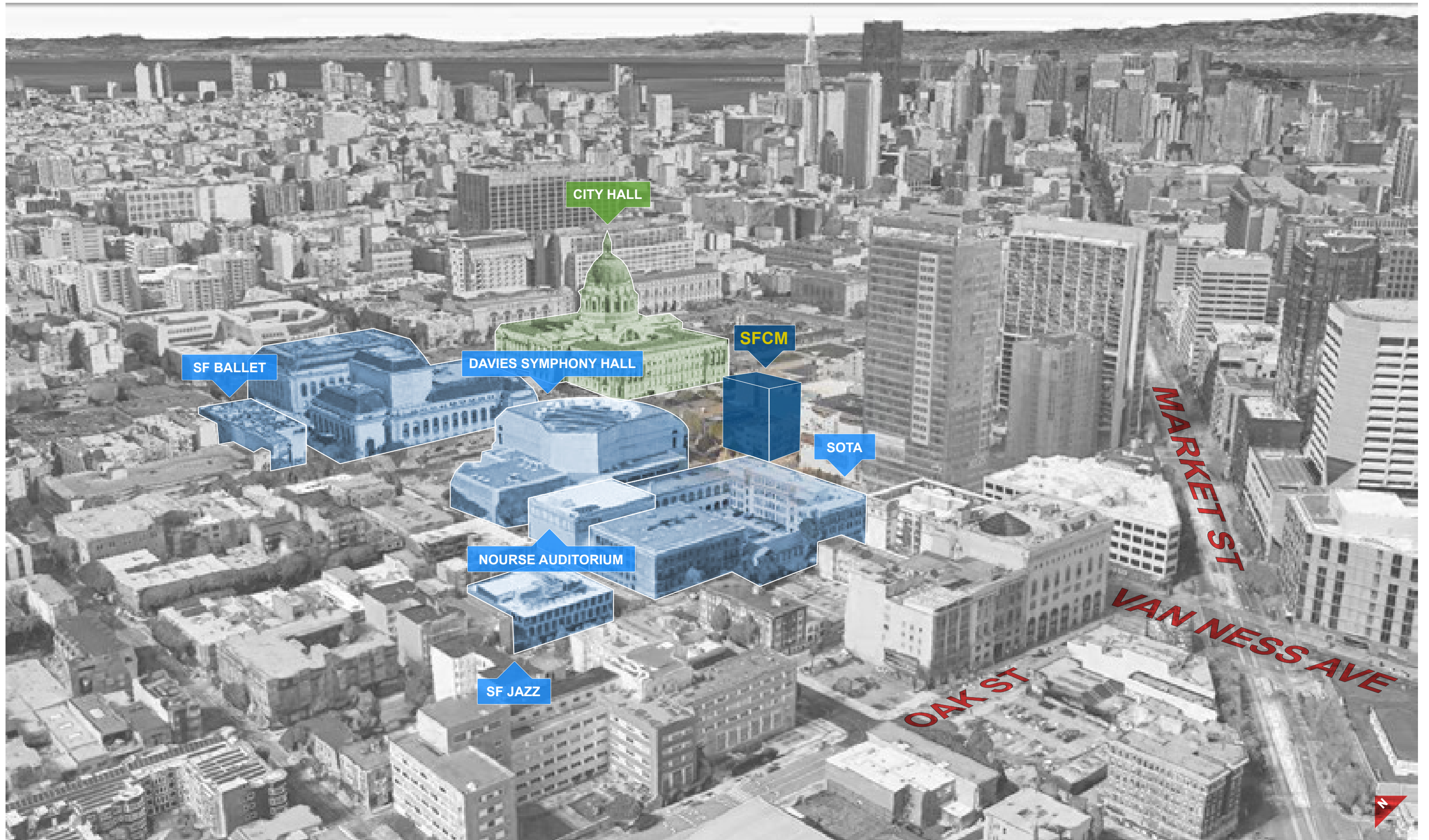


Presented in Committee - March 19, 2018

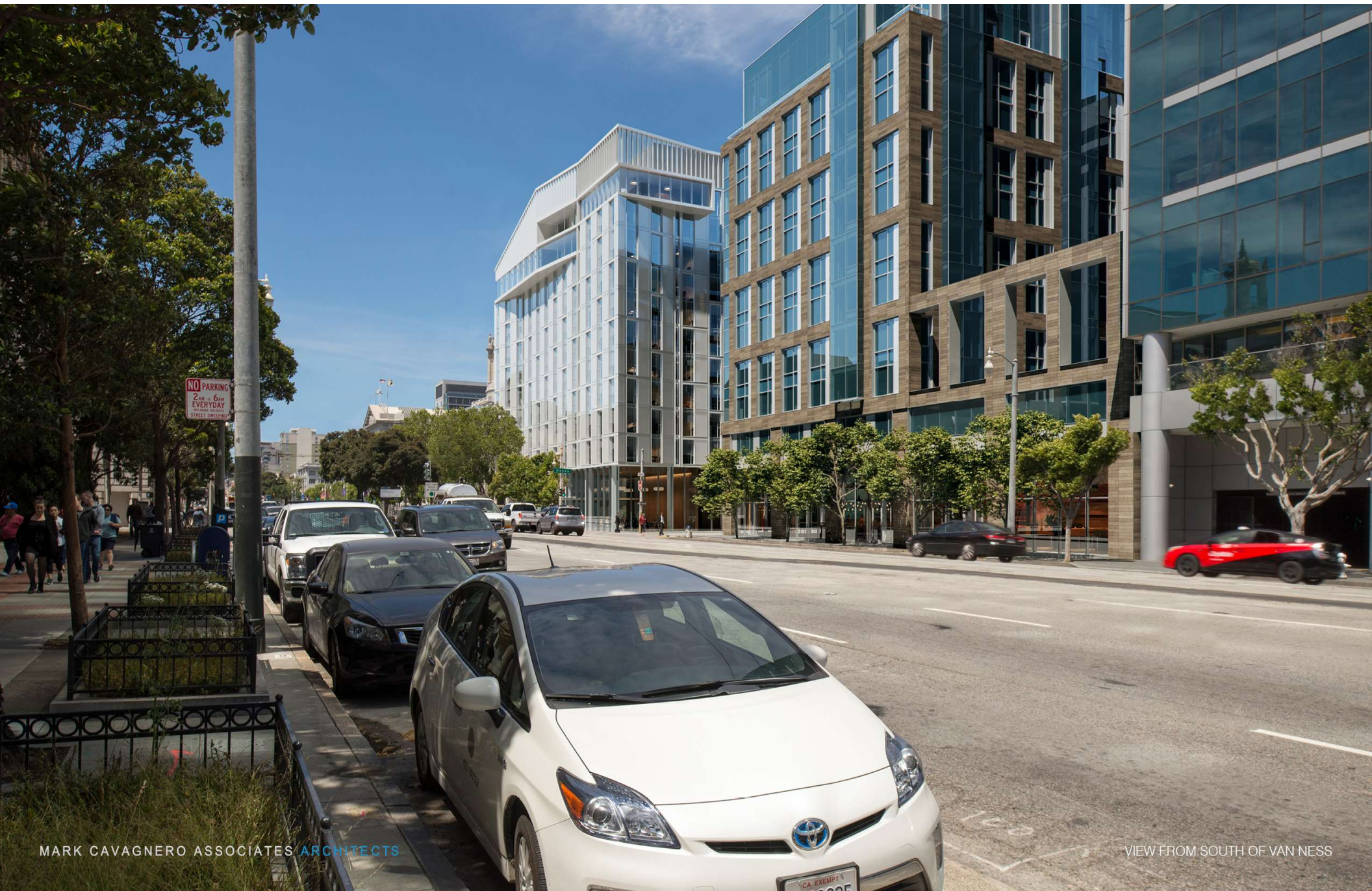
SAN FRANCISCO CONSERVATORY OF MUSIC

BOARD OF SUPERVISORS- LAND USE COMMITTEE

MARCH 19, 2018





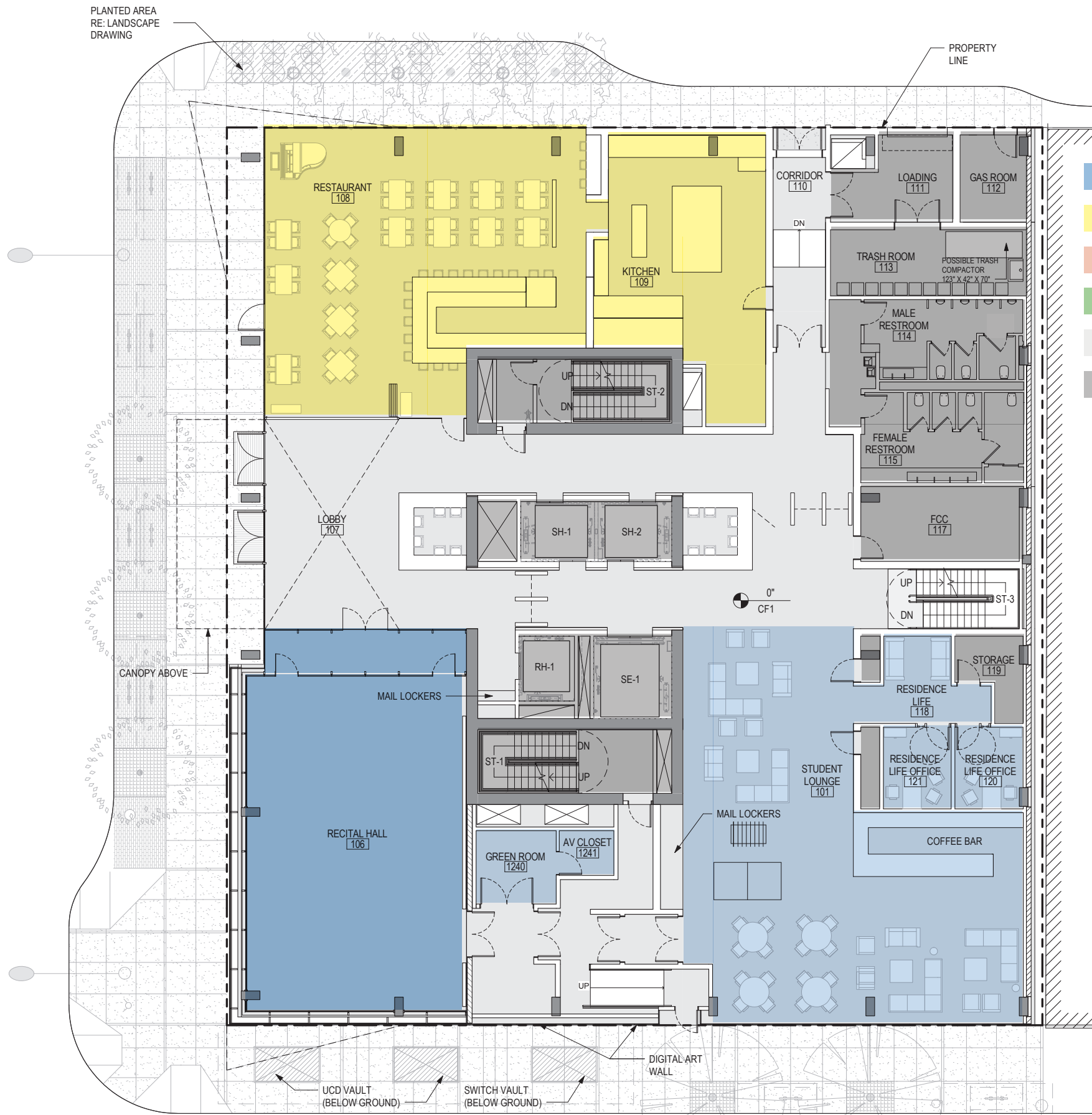




MARK CAVAGNERO ASSOCIATES ARCHITECTS

VIEW FROM VAN NESS





- PROGRAM**
- CONSERVATORY
 - RESTAURANT
 - HOUSING
 - TERRACE
 - PUBLIC CIRCULATION
 - SERVICE









San Francisco Conservatory of Music





VIEW OF STUDENT CENTER ON HAYES STREET

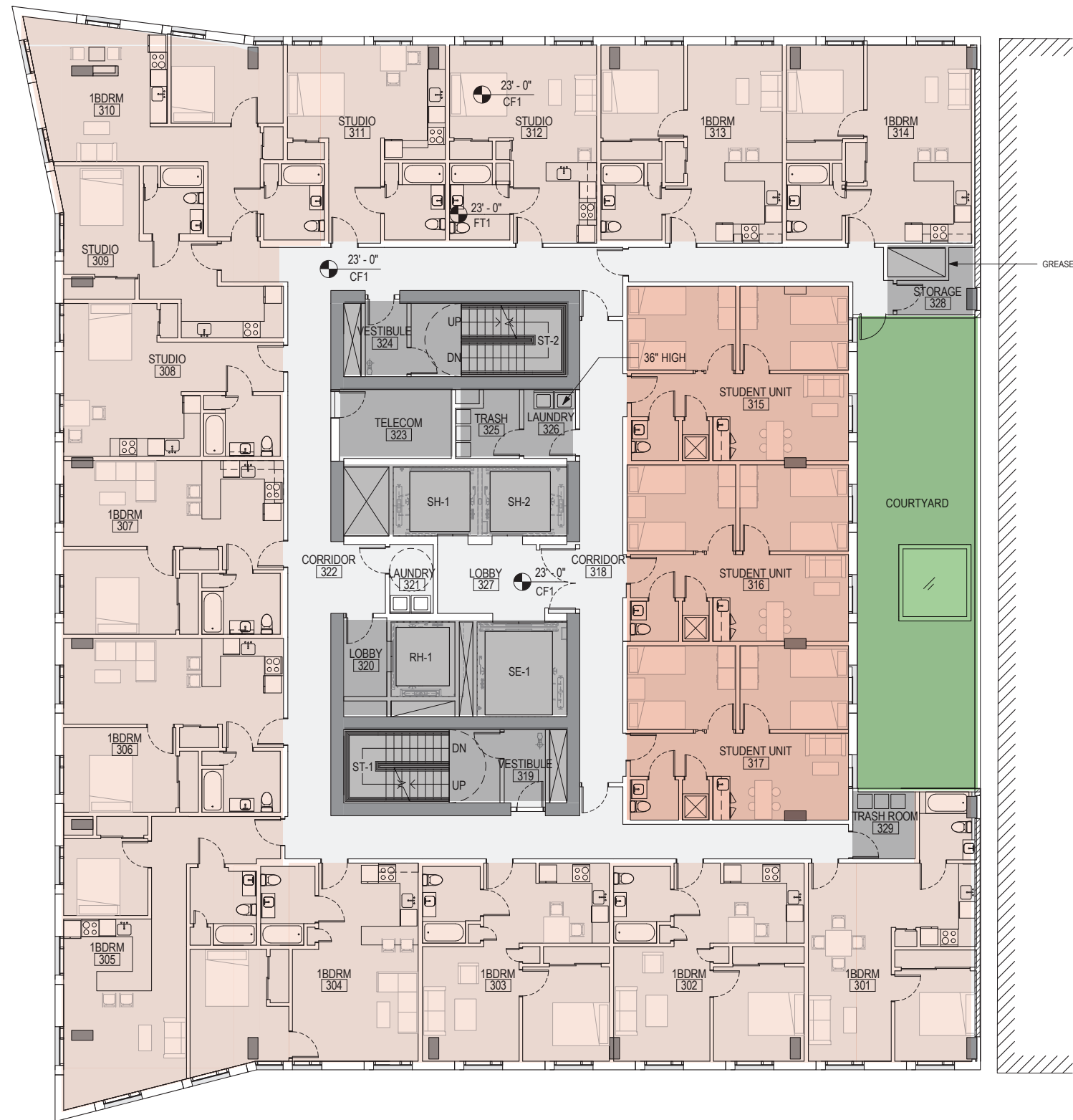




MARK CAVAGNERO ASSOCIATES ARCHITECTS

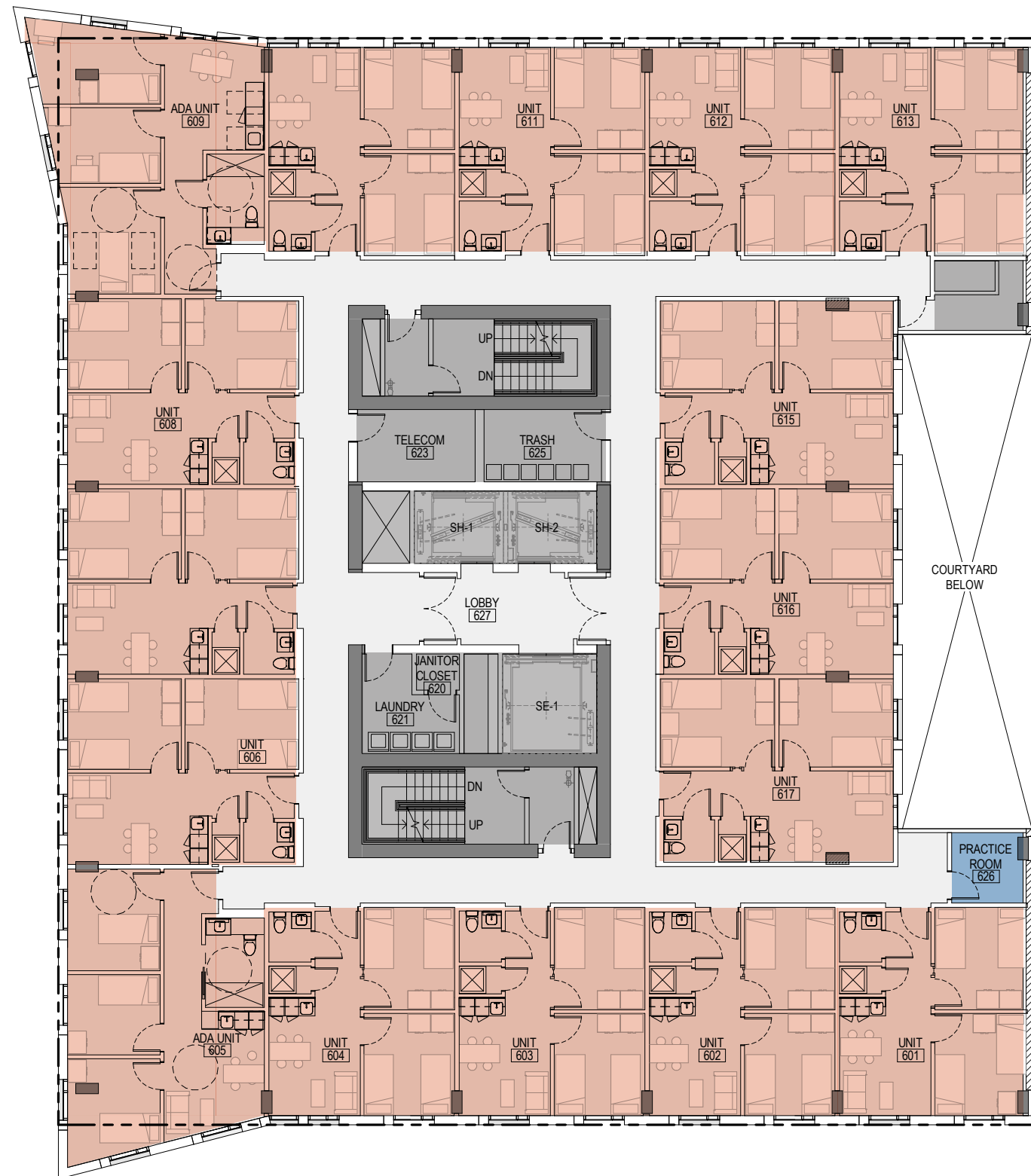
VIEW OF RESTAURANT FROM DR TOM WADELL PLACE AND VAN NESS





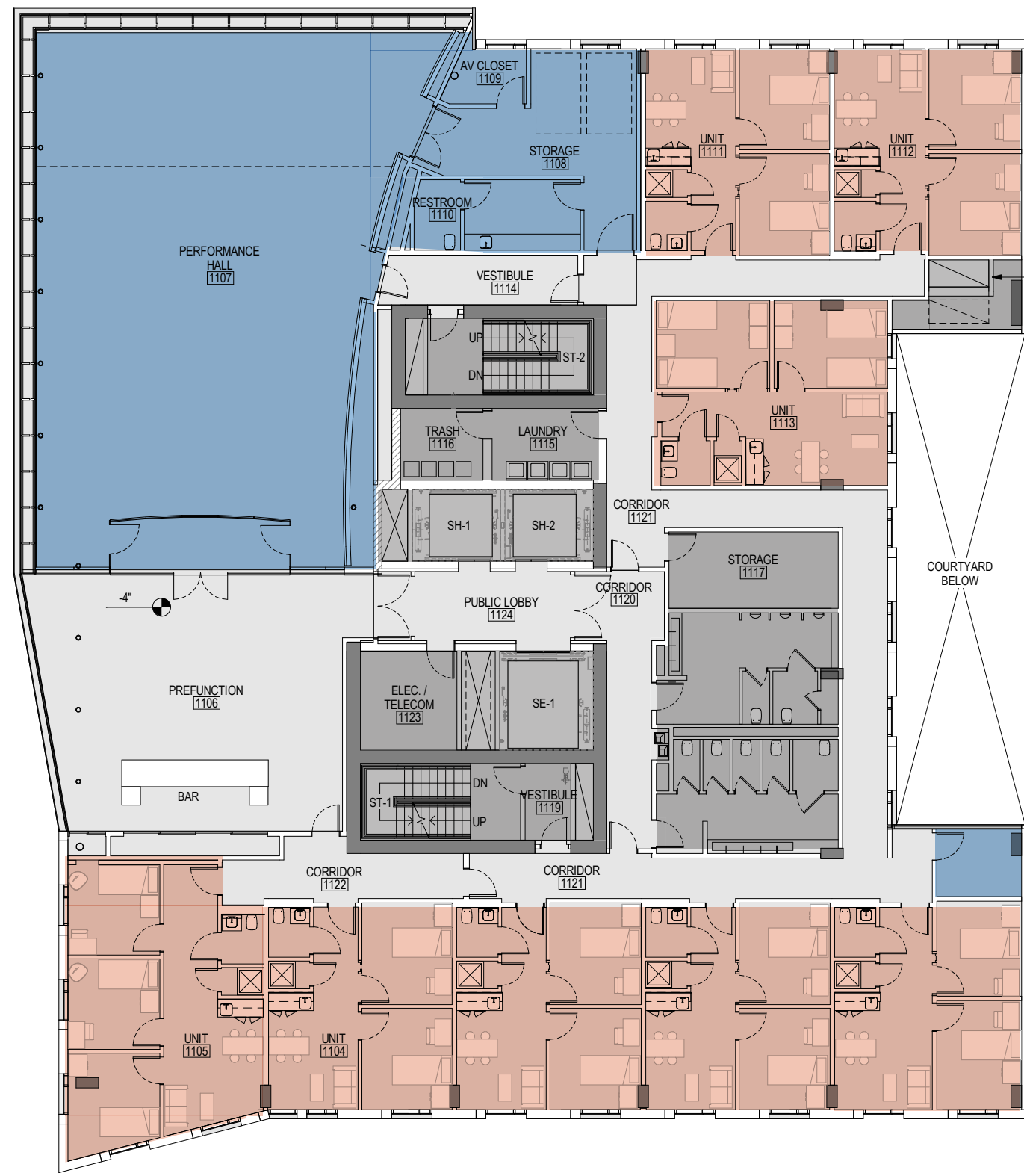
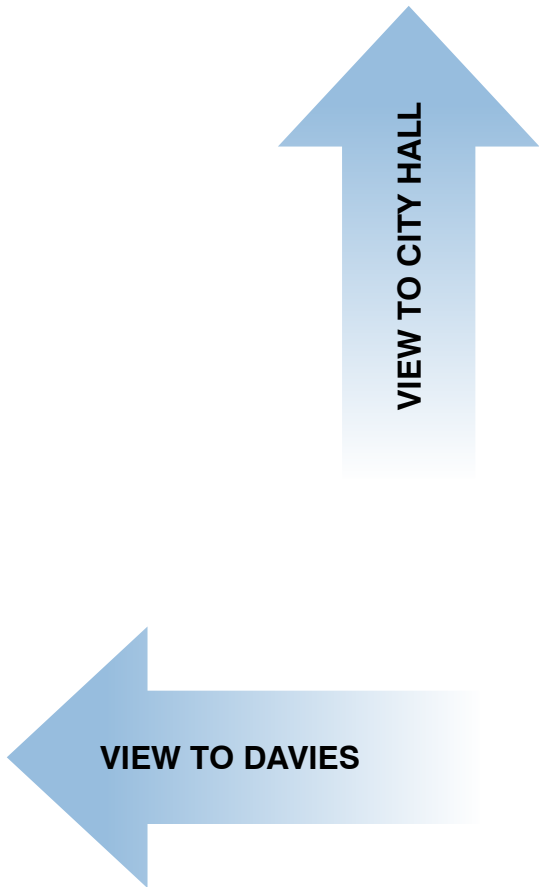
- PROGRAM**
- CONSERVATORY
 - RESTAURANT
 - HOUSING
 - TERRACE
 - PUBLIC CIRCULATION
 - SERVICE





- PROGRAM**
- CONSERVATORY
 - RESTAURANT
 - HOUSING
 - TERRACE
 - PUBLIC CIRCULATION
 - SERVICE

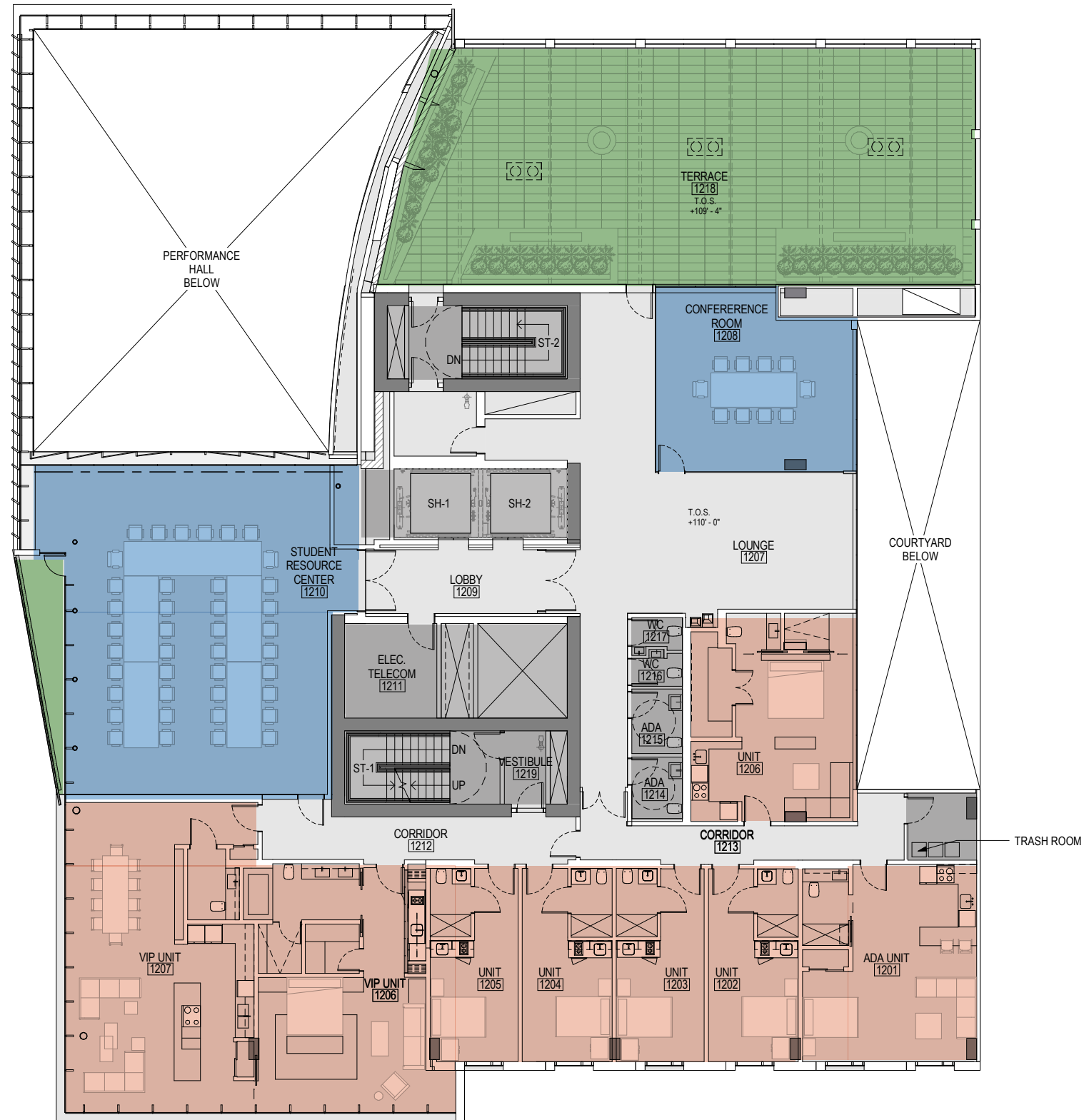




- PROGRAM**
- CONSERVATORY
 - RESTAURANT
 - HOUSING
 - TERRACE
 - PUBLIC CIRCULATION
 - SERVICE







- PROGRAM**
- CONSERVATORY
 - RESTAURANT
 - HOUSING
 - TERRACE
 - PUBLIC CIRCULATION
 - SERVICE





MARK CAVAGNERO ASSOCIATES ARCHITECTS

VIEW FROM LEVEL 12 ROOF TERRACE



