



**San Francisco**  
**Planning**

# 1088 Howard street CPE Appeal

**Ryan Shum** | *Senior Planner* | *October 6, 2020*

# Presentation

**Project Milestones**



**Construction Noise & Air Quality**



**Operational Air Quality**




**Sewer Utilities**



**CEQA Conclusion**





**Cpe  
issued**

December 18, 2019

**Dr  
requeste  
d**

January 15, 2020

**Dr taken  
Approved  
with  
Condition**

June 4, 2020

# Constructi on Impacts

## Construction noise & Air quality



- The construction noise and air quality evaluations conservatively assume residents are home during construction activities
- PEIR construction air quality and noise mitigation measures apply to this project and reduce impacts to less than significant
- COVID-19 shelter-in-place/stay-at-home orders do not alter these analyses.

## Operational air quality

- Not required to mitigate existing conditions
- Project operations would not include new sources of diesel particulate matter and would not generate substantial number of new vehicle trips
- The project would have a less than significant air quality impact

operationa

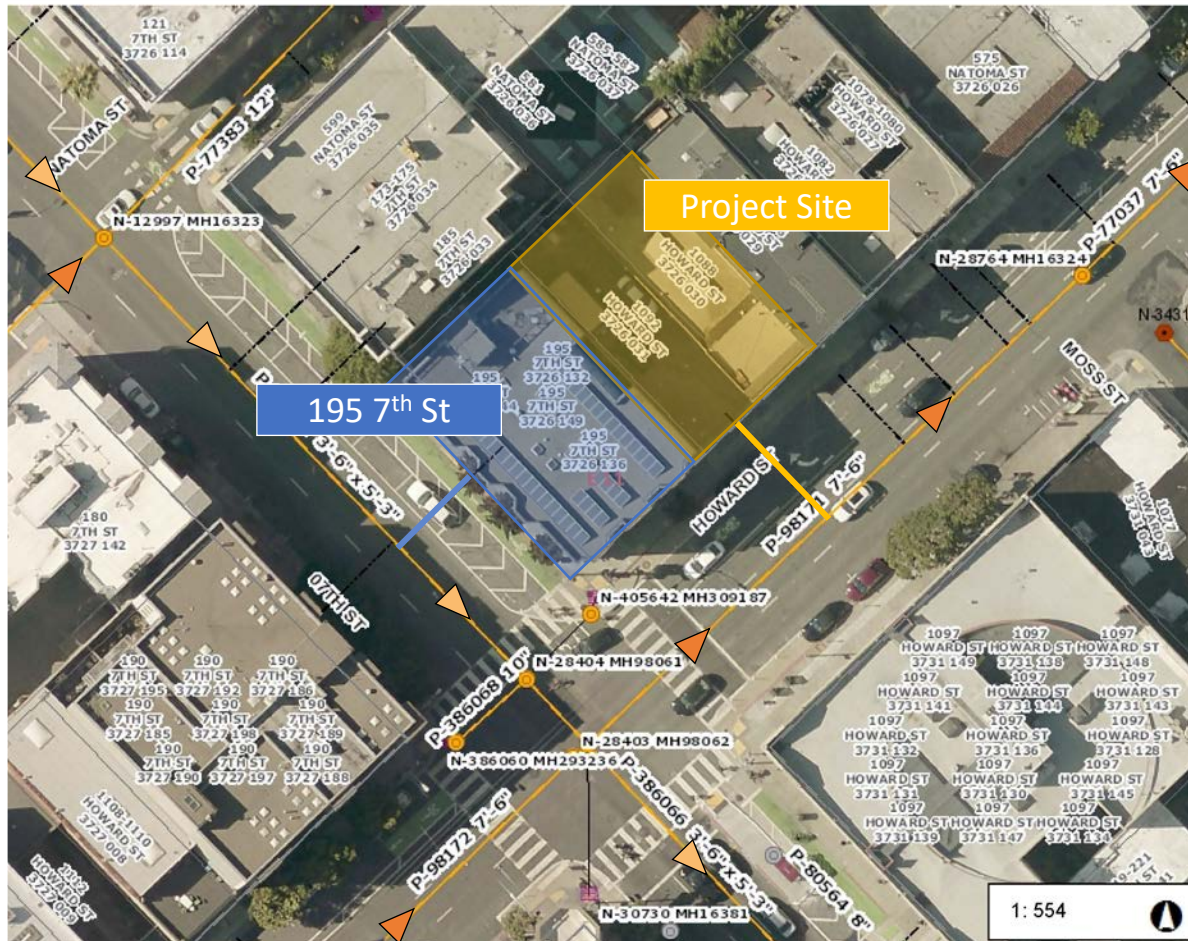
|

mpacts

## utilities

- The project would not increase demand on the city's combined sewer system beyond what has been anticipated for the site
- The 1088 Howard Street site is connected to a different sewer main than the 195 7th Street building.
- 1088 Howard Street site is downstream from the 195 7th Street building.
- The proposed project is unlikely to affect existing sewage backup issues at 195 7th Street.





# Conclusion

- The project is consistent with the use and development density identified for the site in the Eastern Neighborhoods PEIR.
- All project impacts are consistent with what was already analyzed and disclosed in the Eastern Neighborhoods PEIR.
- The project qualifies for a CPE





San Francisco  
**Planning**

# THANK YOU

**Ryan Shum** | *Senior Planner*

San Francisco Planning Department

[ryan.shum@sfgov.org](mailto:ryan.shum@sfgov.org)

[www.sfplanning.org](http://www.sfplanning.org)