

1201 EVANS AVE
APN 5237-038

FAIRFAX AVENUE

STREET

KEITH

1215 FAIRFAX AVE
APN 5239-025

ELMCO SALES INC
DN 137659000
APN 4602A-016

PVT LANDSCAPE CORRIDOR
1190 FAIRFAX AVE
APN 4624-34

1195 FAIRFAX AVE
APN 4624-30

FAIRFAX

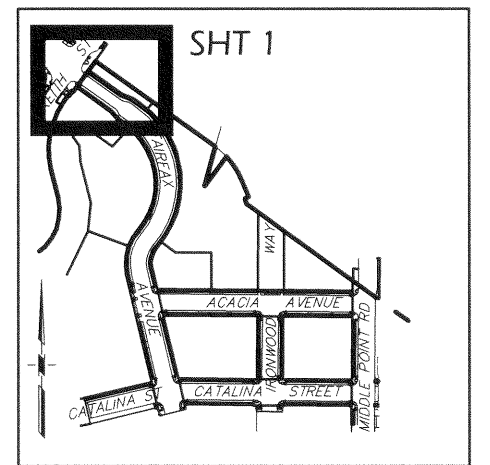
AVENUE

LINE TABLE - SIDEWALK		
LINE #	LENGTH	DIRECTION
L1	1.02	N54°32'23.69"W
L2	14.74	N54°28'21.00"W
L3	9.00	N35°32'21.67"E
L4	25.83	N35°31'39.00"E
L5	21.39	N35°31'39.00"E
L6	96.83	S54°28'21.00"E
L7	96.00	S54°28'21.00"E
L8	17.02	S54°28'21.00"E
L9	17.02	S54°28'21.00"E

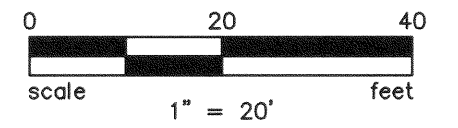
CURVE TABLE			
CURVE	RADIUS	DELTA	LENGTH
C1	28.00'	88°22'25"	43.19'
C2	8.00'	90°00'00"	12.57'
C3	20.00'	46°12'39"	16.13'
C4	10.00'	46°05'40"	8.05'
C5	15.00'	90°00'00"	23.56'
C6	15.00'	90°00'00"	23.56'
C7	10.00'	36°52'12"	6.44'
C8	20.00'	36°52'12"	12.87'
C9	10.00'	36°52'12"	6.44'
C10	20.00'	36°52'12"	12.87'

CURVE TABLE-BSW & R/W			
CURVE	RADIUS	DELTA	LENGTH
C50	26.00'	26°31'31"	12.04'
C51	31.00'	26°31'31"	14.35'
C52	25.00'	26°31'31"	11.57'
C53	32.00'	26°31'31"	14.81'
C54	204.00'	32°25'30"	115.45'

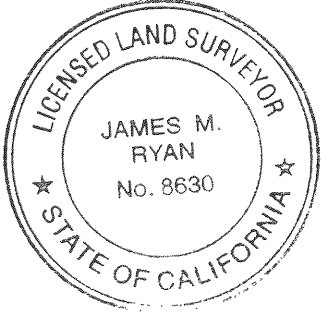
LINE TABLE-BSW & R/W		
LINE #	LENGTH	DIRECTION
L50	45.00	S35°31'39.00"W
L51	86.54	S54°28'21.00"E
L52	86.54	S54°28'21.00"E
L53	17.02	S54°28'21.00"E
L54	17.02	S54°28'21.00"E



KEY MAP



THIS MAP WAS PREPARED BY
ME OR UNDER MY DIRECTION.
MARCH 24, 2021
DATE



CITY AND COUNTY OF SAN FRANCISCO
SAN FRANCISCO PUBLIC WORKS
BUREAU OF STREET USE AND MAPPING

MAP
SHOWING THE OFFICIAL GRADES OF SIDEWALK
AND CURB ELEVATIONS ALONG FAIRFAX
AVENUE, ACACIA AVENUE, CATALINA STREET,
IRONWOOD WAY, AND MIDDLE POINT ROAD

REFERENCES: A-17-182
SCALE: 1" = 20'
SHEET 1 OF 8 SHEETS

CONT. ON SHT. 2

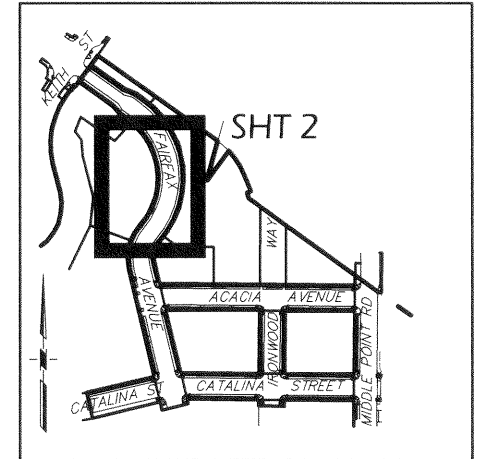
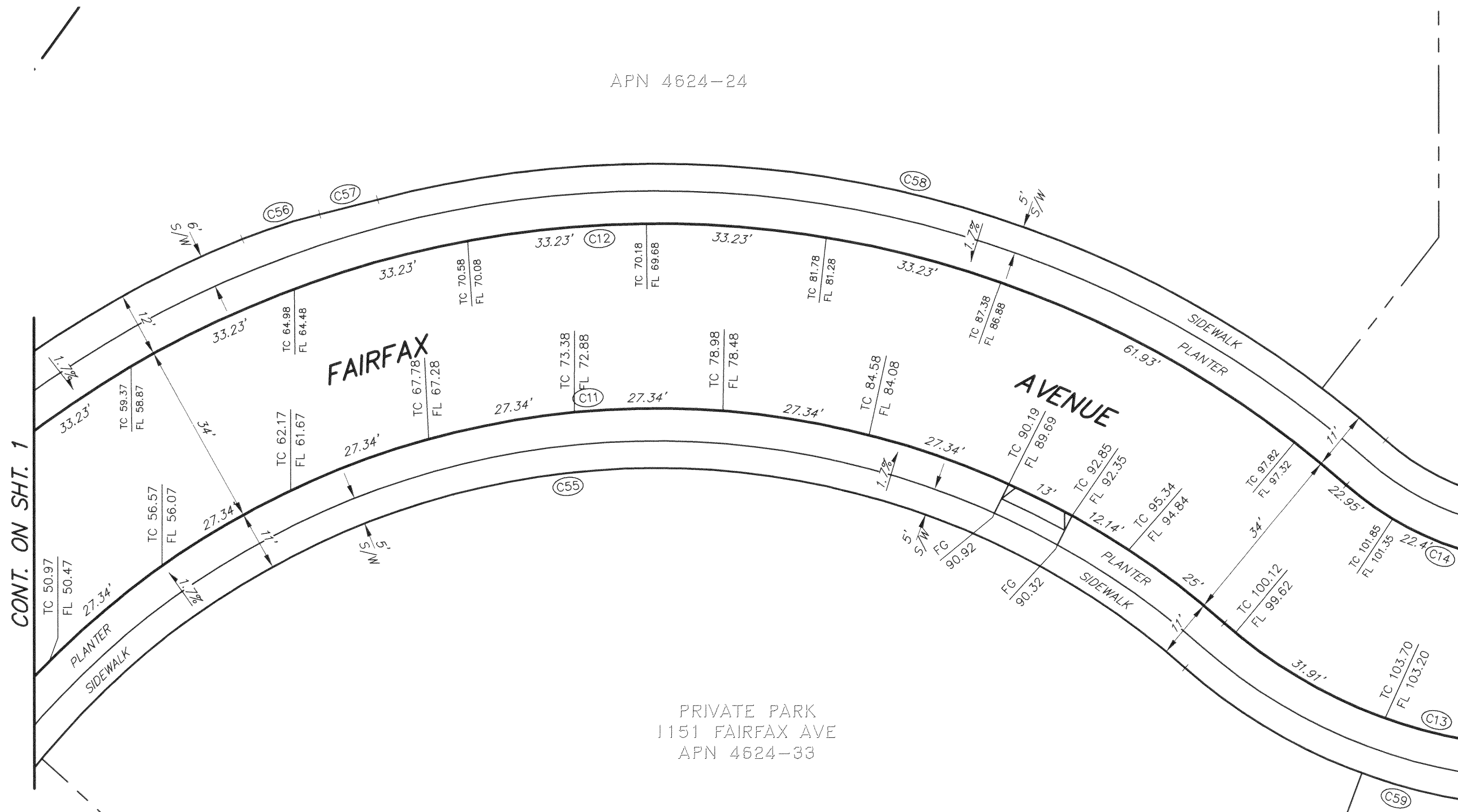
NO.	DATE	DESCRIPTION TABLE OF CHANGES	BY	CHECKED: JDF

DRAWN: NLC
APPROVED: *James M. Ryan*
DATE: 5-24-2021
FILE: Q-20-1085

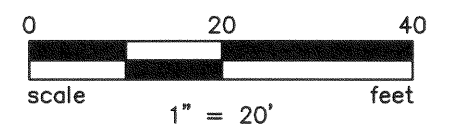
5/24/2021 5:07:50 PM James Smith Q:\2007\2007030.00\07030.00.dwg\EXH\07030-EXH Ph1 Q20 ROW SF DPW.dwg

5/24/2021 5:08:22 PM James Smith G:\2007\2007030.00\07030.00\dwg\EXH\07030-EXH Ph1 Q20 ROW SF DFW.dwg

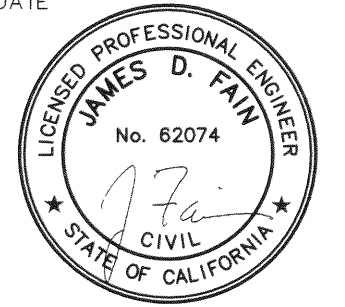
APN 4624-24



KEY MAP



THIS MAP WAS PREPARED BY ME OR UNDER MY DIRECTION.
 MARCH 24, 2021
 DATE



PRIVATE PARK
 1151 FAIRFAX AVE
 APN 4624-33

CURVE TABLE-BSW & R/W			
CURVE	RADIUS	DELTA	LENGTH
C55	147.00'	95°52'00"	245.96'
C56	100.00'	8°36'42"	15.03'
C57	500.00'	1°16'09"	11.08'
C58	203.00'	56°05'58"	198.76'
C59	103.00'	54°45'26"	98.44'

CURVE TABLE			
CURVE	RADIUS	DELTA	LENGTH
C11	158.00'	95°52'00"	264.36'
C12	192.00'	95°52'00"	321.25'
C13	92.00'	54°45'26"	87.92'
C14	58.00'	54°45'26"	55.43'

CITY AND COUNTY OF SAN FRANCISCO
 SAN FRANCISCO PUBLIC WORKS
 BUREAU OF STREET USE AND MAPPING

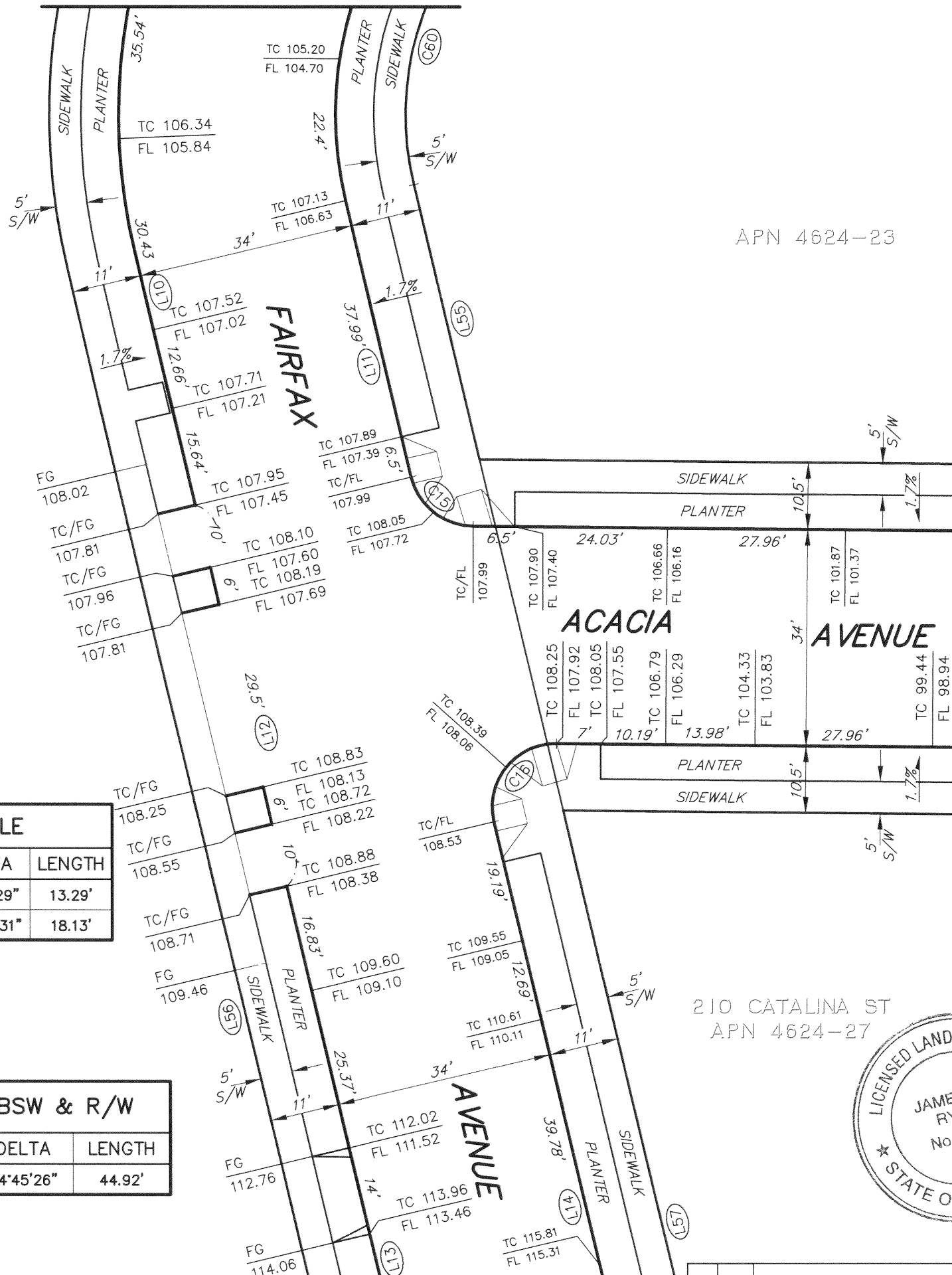
MAP
 SHOWING THE OFFICIAL GRADES OF SIDEWALK
 AND CURB ELEVATIONS ALONG FAIRFAX
 AVENUE, ACACIA AVENUE, CATALINA STREET,
 IRONWOOD WAY, AND MIDDLE POINT ROAD

REFERENCES: A-17-182
 SCALE: 1" = 20' SHEET 2 OF 8 SHEETS

NO.	DATE	DESCRIPTION TABLE OF CHANGES	BY	CHECKED: JDF	DRAWN: NLC	APPROVED: <i>James M. Ryan</i>	DATE: 5-24-2021	FILE: Q-20-1085
-----	------	------------------------------	----	--------------	------------	--------------------------------	-----------------	-----------------

CONT. ON SHT. 2

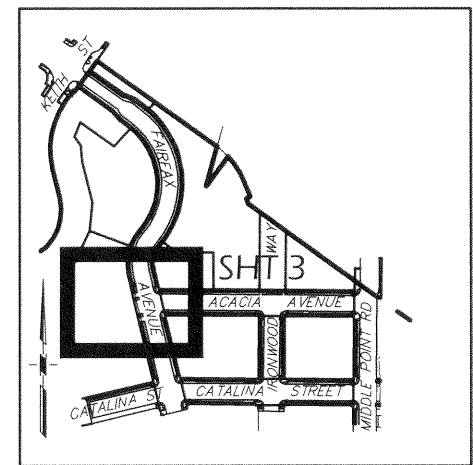
1101 FAIRFAX (60 WEST POINT RD)
APN 4624-26



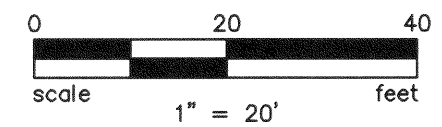
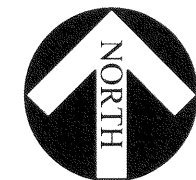
APN 4624-23

CONT. ON SHT. 8

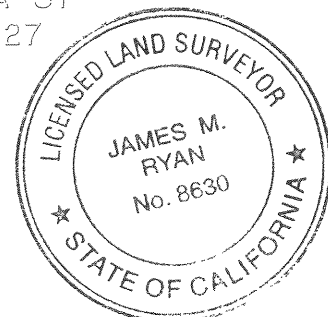
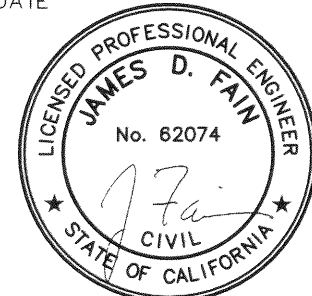
CONT. ON SHT. 4



KEY MAP



THIS MAP WAS PREPARED BY ME OR UNDER MY DIRECTION.
MARCH 24, 2021
DATE



CITY AND COUNTY OF SAN FRANCISCO
SAN FRANCISCO PUBLIC WORKS
BUREAU OF STREET USE AND MAPPING

MAP
SHOWING THE OFFICIAL GRADES OF SIDEWALK
AND CURB ELEVATIONS ALONG FAIRFAX
AVENUE, ACACIA AVENUE, CATALINA STREET,
IRONWOOD WAY, AND MIDDLE POINT ROAD

REFERENCES: A-17-182
SCALE: 1" = 20' SHEET 3 OF 8 SHEETS
APPROVED: [Signature] FILE: Q-20-1085
DATE: 3/24/2021

LINE TABLE - SIDEWALK		
LINE #	LENGTH	DIRECTION
L10	40.96	S13°21'47.70"E
L11	44.49	S13°21'47.70"E
L12	61.50	S13°21'47.70"E
L13	127.47	S13°21'47.70"E
L14	134.94	S13°21'47.70"E

CURVE TABLE			
CURVE	RADIUS	DELTA	LENGTH
C15	10.00'	76°07'29"	13.29'
C16	10.00'	103°52'31"	18.13'

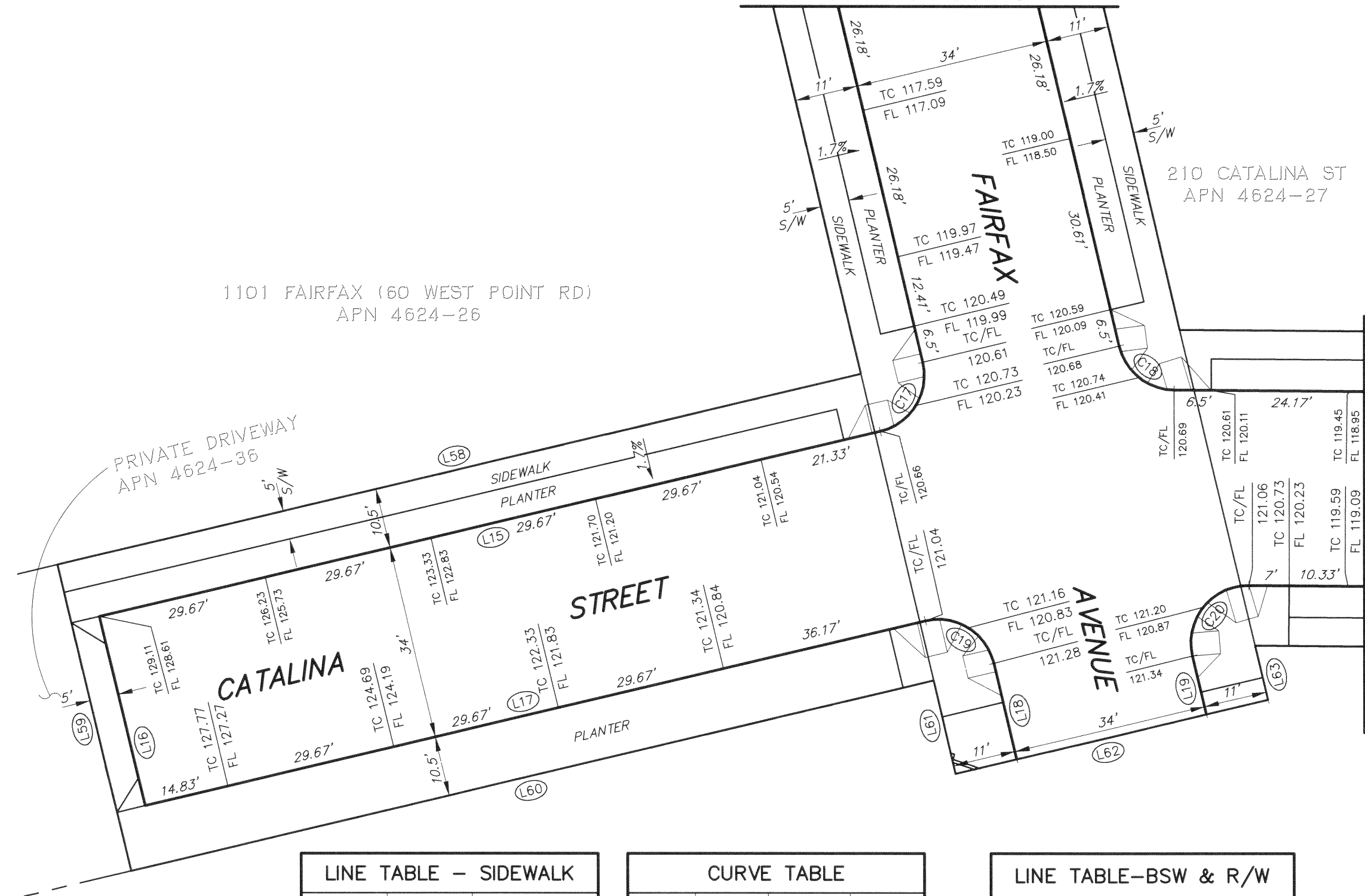
LINE TABLE-BSW & R/W		
LINE #	LENGTH	DIRECTION
L55	44.22	S13°21'47.70"E
L56	229.43	S13°21'47.70"E
L57	133.91	S13°21'47.70"E

CURVE TABLE-BSW & R/W			
CURVE	RADIUS	DELTA	LENGTH
C60	47.00'	54°45'26"	44.92'

NO.	DATE	DESCRIPTION TABLE OF CHANGES	BY	CHECKED: JDF	DRAWN: NLC

5/24/2021 5:08:50 PM James Smith C:\2007\2007030.00\07030.00.dwg\EXH\07030-EXH Pn1 Q20 ROW ST DFW.dwg

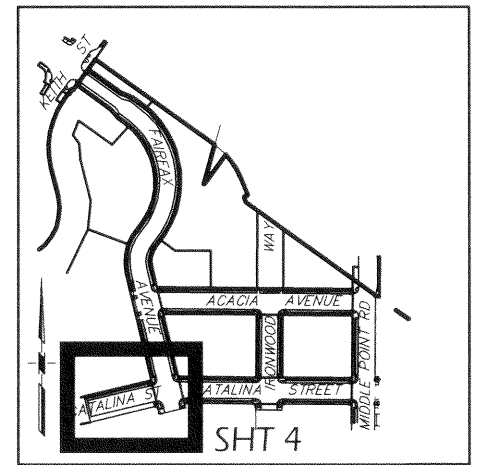
CONT. ON SHT. 3



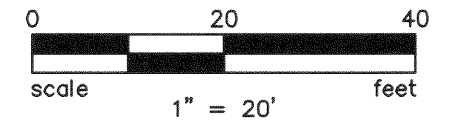
1101 FAIRFAX (60 WEST POINT RD)
APN 4624-26

210 CATALINA ST
APN 4624-27

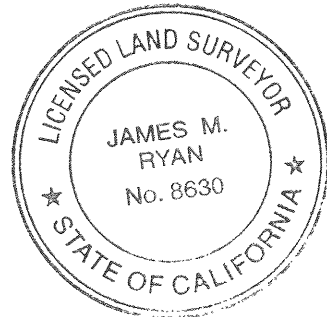
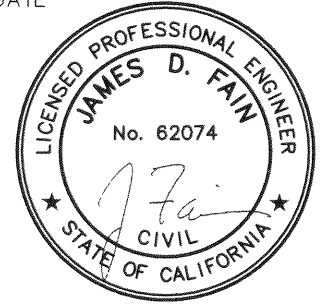
PRIVATE DRIVEWAY
APN 4624-36



KEY MAP



THIS MAP WAS PREPARED BY
ME OR UNDER MY DIRECTION.
MARCH 24, 2021
DATE



LINE TABLE - SIDEWALK		
LINE #	LENGTH	DIRECTION
L15	140.00	S76°38'12.30"W
L16	34.00	S13°21'47.70"E
L17	140.00	S76°38'12.30"W
L18	17.24	S13°21'47.70"E
L19	10.50	S13°21'47.70"E

CURVE TABLE			
CURVE	RADIUS	DELTA	LENGTH
C17	10.00'	90°00'00"	15.71'
C18	10.00'	76°07'29"	13.29'
C19	10.00'	90°00'00"	15.71'
C20	10.00'	103°52'31"	18.13'

LINE TABLE-BSW & R/W		
LINE #	LENGTH	DIRECTION
L58	144.00	S76°38'12.30"W
L59	55.00	S13°21'47.70"E
L60	144.00	S76°38'12.30"W
L61	16.74	S13°21'47.70"E
L62	56.00	S76°38'12.30"W
L63	9.74	S13°21'47.70"E

CITY AND COUNTY OF SAN FRANCISCO
SAN FRANCISCO PUBLIC WORKS
BUREAU OF STREET USE AND MAPPING

MAP
SHOWING THE OFFICIAL GRADES OF SIDEWALK
AND CURB ELEVATIONS ALONG FAIRFAX
AVENUE, ACACIA AVENUE, CATALINA STREET,
IRONWOOD WAY, AND MIDDLE POINT ROAD

REFERENCES: A-17-182
SCALE: 1" = 20' SHEET 4 OF 8 SHEETS

NO.	DATE	DESCRIPTION TABLE OF CHANGES	BY	CHECKED: JDF	DRAWN: NLC	APPROVED: <i>J. D. Fain</i>	FILE: Q-20-1085
						DATE: 5-24-2021	

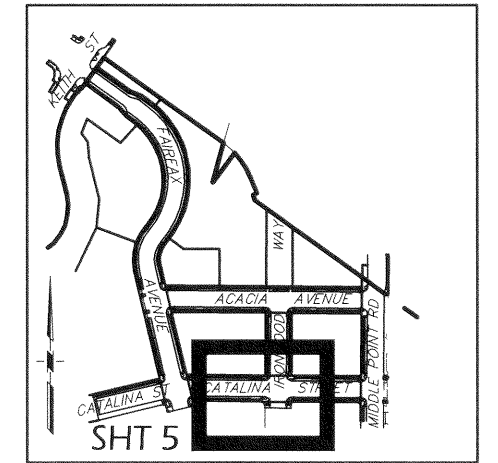
5/24/2021 5:09:26 PM James Smith Q:\2007\2007030\00\07030.dwg\EXH\07030-EXH Ph1 Q20 ROW SF DFW.dwg

5/24/2021 5:09:54 PM James Smith Q:\2007\2007030\00\07030\00\dwg\EXH\07030-EXH Pht 020 ROW SF DPW.dwg

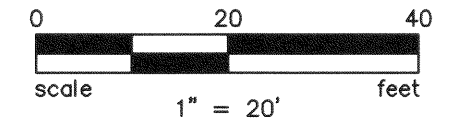
CONT. ON SHT. 8

210 CATALINA ST
APN 4624-27

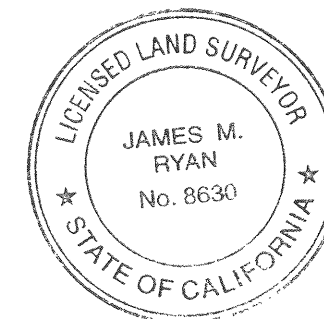
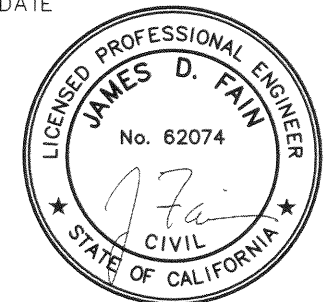
130 ACACIA AVE
APN 4624-28



KEY MAP



THIS MAP WAS PREPARED BY
ME OR UNDER MY DIRECTION.
MARCH 24, 2021
DATE



CITY AND COUNTY OF SAN FRANCISCO
SAN FRANCISCO PUBLIC WORKS
BUREAU OF STREET USE AND MAPPING

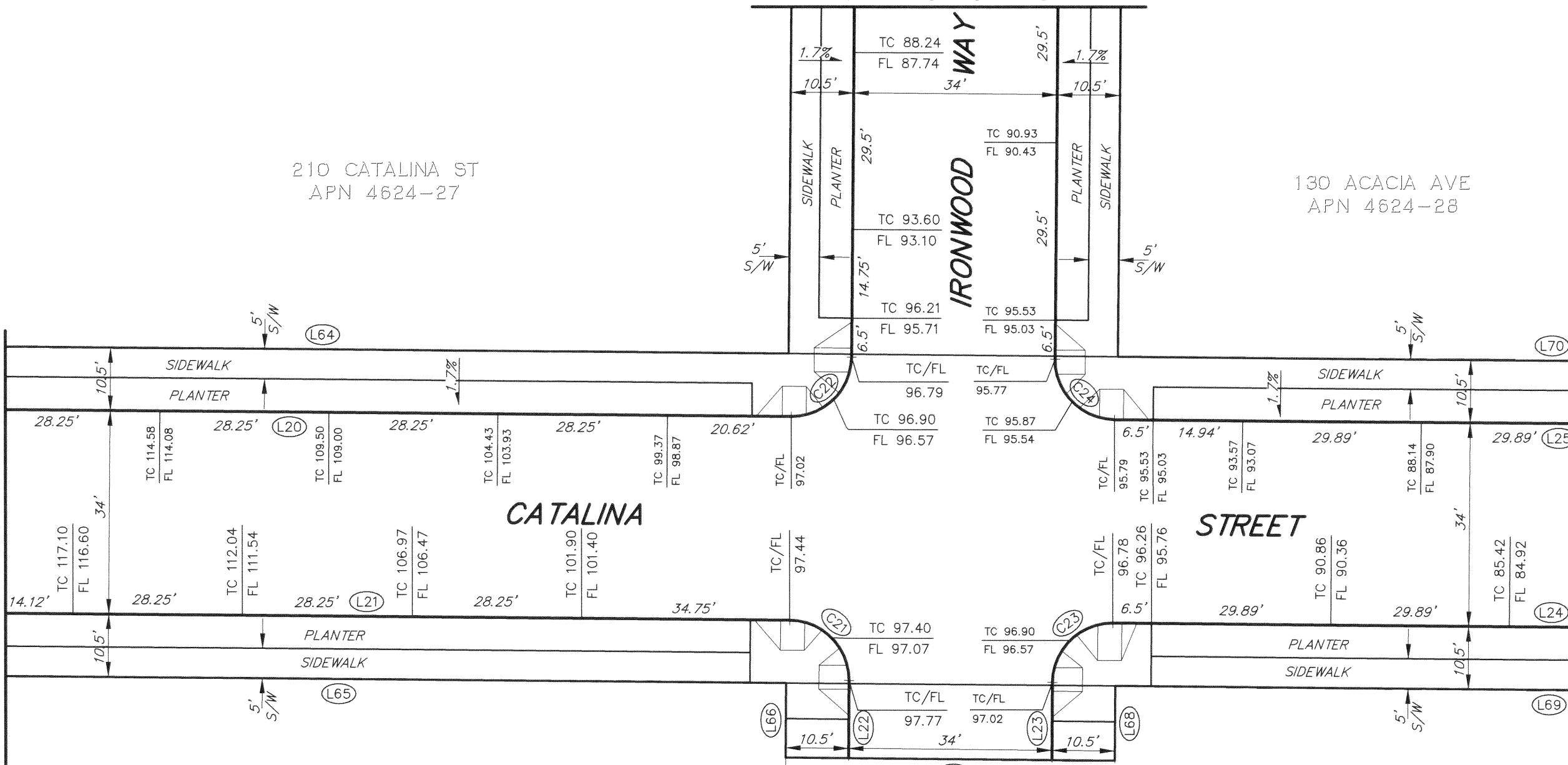
MAP
SHOWING THE OFFICIAL GRADES OF SIDEWALK
AND CURB ELEVATIONS ALONG FAIRFAX
AVENUE, ACACIA AVENUE, CATALINA STREET,
IRONWOOD WAY, AND MIDDLE POINT ROAD

REFERENCES: A-17-182
SCALE: 1" = 20' SHEET 5 OF 8 SHEETS

NO.	DATE	DESCRIPTION	TABLE OF CHANGES	BY	CHECKED: JDF	DRAWN: NLC	APPROVED: <i>James D. Fain</i>	DATE: 5-24-2021	FILE: Q-20-1085
-----	------	-------------	------------------	----	--------------	------------	--------------------------------	-----------------	-----------------

CONT. ON SHT. 4

CONT. ON SHT. 6



LINE TABLE - SIDEWALK

LINE #	LENGTH	DIRECTION
L20	164.29	S89°29'16.24"E
L21	150.95	S89°29'16.24"E
L22	13.00	S0°30'43.76"W
L23	13.00	S0°30'43.76"W
L24	147.50	S89°29'16.24"E
L25	147.50	S89°29'16.24"E

CURVE TABLE

CURVE	RADIUS	DELTA	LENGTH
C21	10.00'	90°00'01"	15.71'
C22	10.00'	90°00'00"	15.71'
C23	10.00'	90°00'00"	15.71'
C24	10.00'	90°00'00"	15.71'

LINE TABLE-BSW & R/W

LINE #	LENGTH	DIRECTION
L64	162.89	S89°29'16.24"E
L65	149.30	S89°29'16.24"E
L66	12.50	S0°30'43.76"W
L67	55.00	N89°29'16.24"W
L68	12.50	S0°30'43.76"W
L69	145.00	S89°29'16.24"E
L70	145.00	S89°29'16.24"E

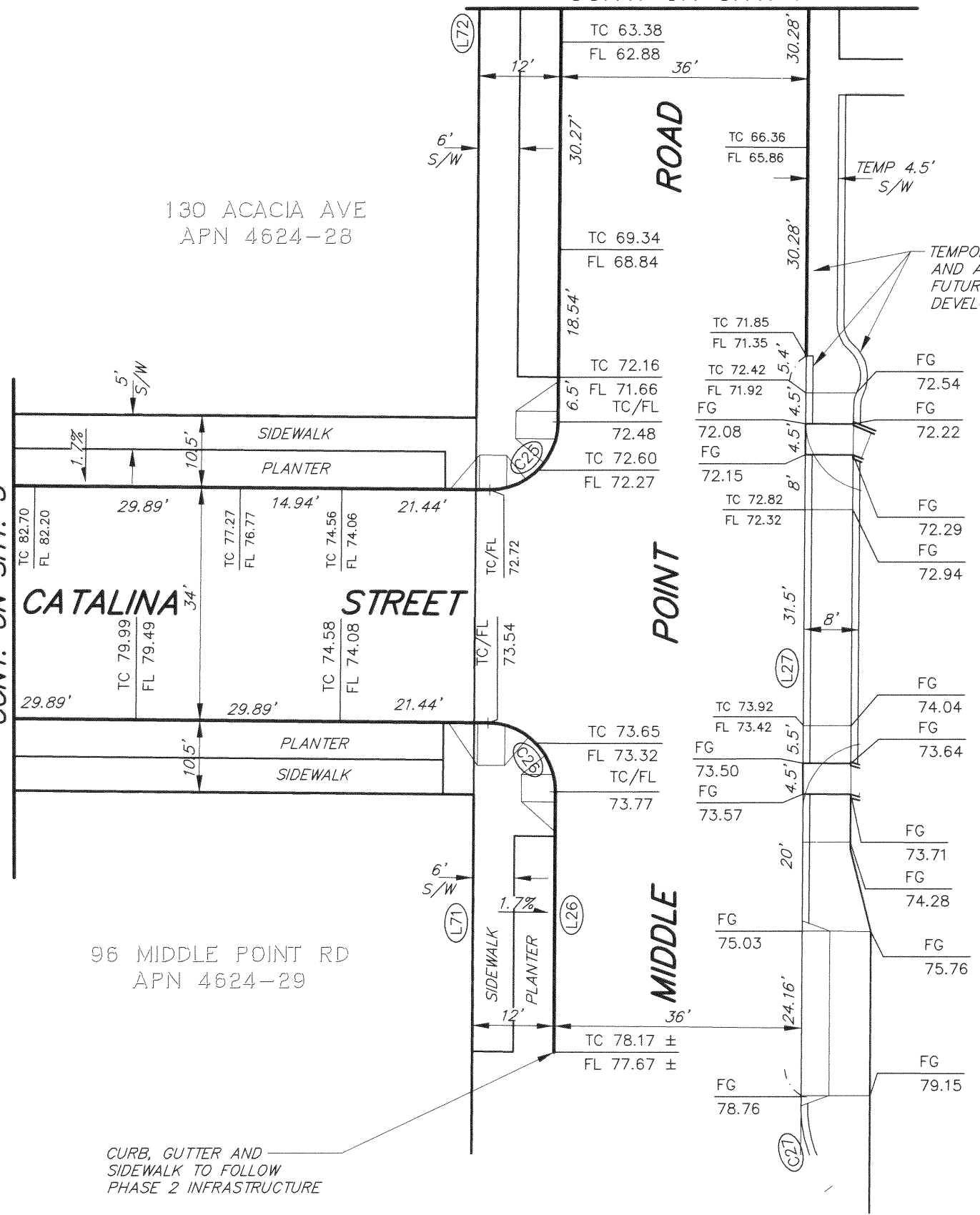
10 W POINT RD
APN 4624-31

96 MIDDLE POINT RD
APN 4624-29

5/24/2021 5:10:19 PM James Smith G:\2007\2007030.00\07030.00.dwg\EXH\07030-EXH.Pht Q20 ROW_SF_DPW.dwg

CONT. ON SHT. 7

CONT. ON SHT. 5



201 W POINT RD
APN 4624-32

130 ACACIA AVE
APN 4624-28

96 MIDDLE POINT RD
APN 4624-29

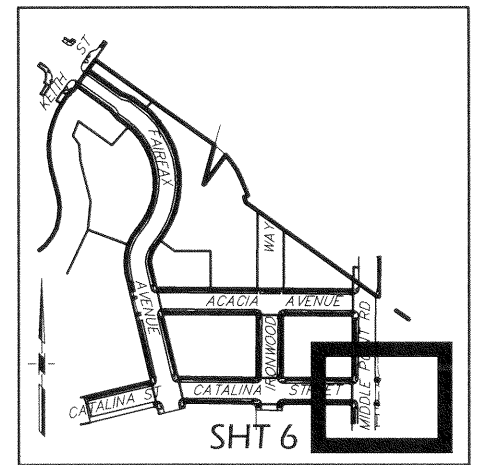
CURB, GUTTER AND
SIDEWALK TO FOLLOW
PHASE 2 INFRASTRUCTURE

TEMPORARY AC DIKE
AND AC SIDEWALK FOR
FUTURE PHASE 3
DEVELOPMENT

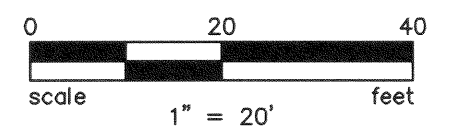
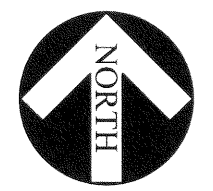
LINE TABLE - SIDEWALK		
LINE #	LENGTH	DIRECTION
L26	38.00	S0°30'43.76"W
L27	108.06	S0°30'43.76"W

LINE TABLE-BSW & R/W		
LINE #	LENGTH	DIRECTION
L71	37.50	S0°30'43.76"W
L72	130.00	S0°30'43.76"W

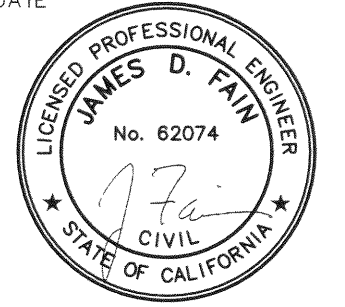
CURVE TABLE			
CURVE	RADIUS	DELTA	LENGTH
C25	10.00'	90°00'00"	15.71'
C26	10.00'	90°00'00"	15.71'
C27	20.00'	41°05'59"	14.35'



KEY MAP



THIS MAP WAS PREPARED BY
ME OR UNDER MY DIRECTION.
MARCH 24, 2021
DATE



CITY AND COUNTY OF SAN FRANCISCO
SAN FRANCISCO PUBLIC WORKS
BUREAU OF STREET USE AND MAPPING

MAP
SHOWING THE OFFICIAL GRADES OF SIDEWALK
AND CURB ELEVATIONS ALONG FAIRFAX
AVENUE, ACACIA AVENUE, CATALINA STREET,
IRONWOOD WAY, AND MIDDLE POINT ROAD

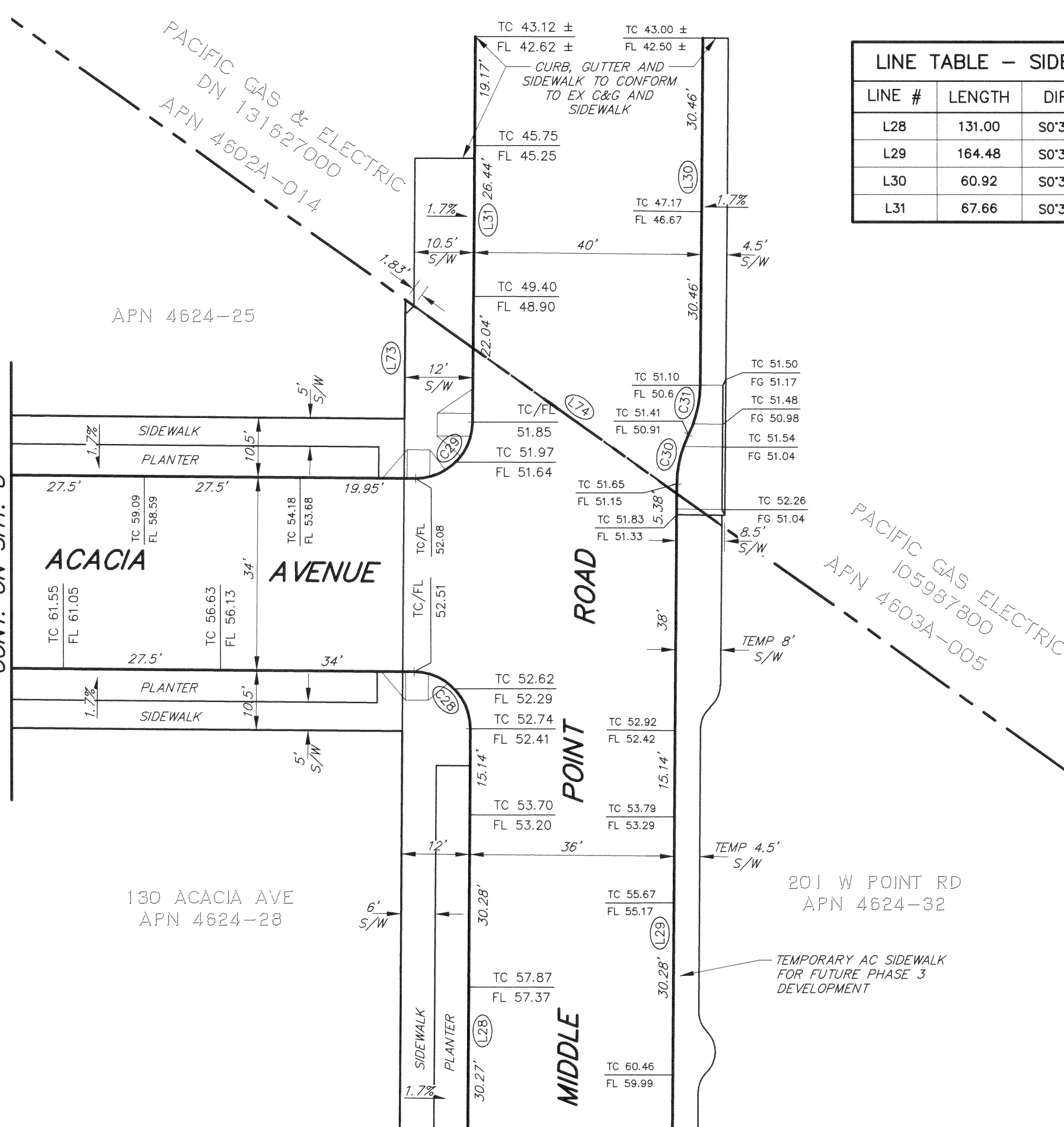
REFERENCES: A-17-182
SCALE: 1" = 20' SHEET 6 OF 8 SHEETS

NO.	DATE	DESCRIPTION TABLE OF CHANGES	BY	CHECKED: JDF	DRAWN: NLC	APPROVED: <i>James M. Ryan</i>	FILE: Q-20-1085
						DATE: 5-24-2021	

5/24/2021 5:10:47 PM James Smith c:\2007\2007030\00\07030\00\dwg\EXH\07030-EXH Ph1_Q20 ROW SF DPW.dwg

CONT. ON SHT. 8

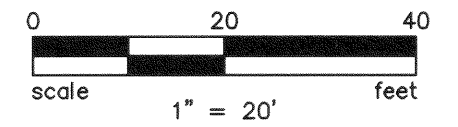
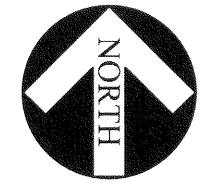
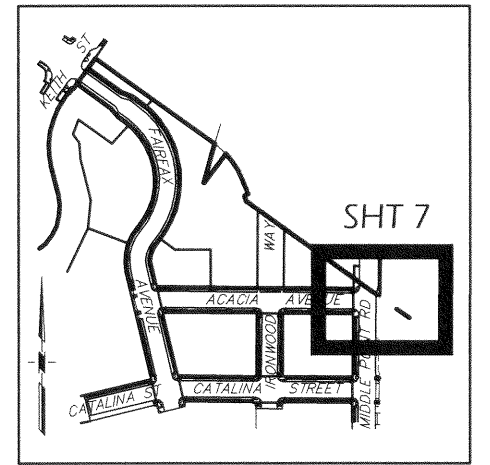
CONT. ON SHT. 6



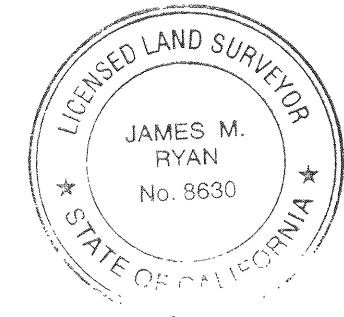
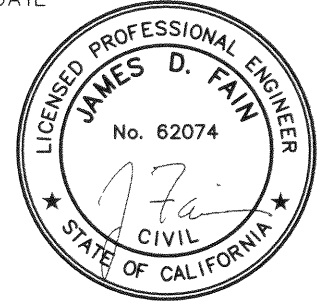
LINE TABLE - SIDEWALK		
LINE #	LENGTH	DIRECTION
L28	131.00	S0°30'43.76"W
L29	164.48	S0°30'43.76"W
L30	60.92	S0°30'43.76"W
L31	67.66	S0°30'43.76"W

CURVE TABLE			
CURVE	RADIUS	DELTA	LENGTH
C28	10.00'	90°00'00"	15.71'
C29	10.00'	90°00'00"	15.71'
C30	20.00'	25°50'31"	9.02'
C31	20.00'	25°50'31"	9.02'

LINE TABLE-BSW & R/W		
LINE #	LENGTH	DIRECTION
L73	20.87	S0°30'43.76"W
L74	68.38	S54°28'21.00"E



THIS MAP WAS PREPARED BY ME OR UNDER MY DIRECTION.
MARCH 24, 2021
DATE



CITY AND COUNTY OF SAN FRANCISCO
SAN FRANCISCO PUBLIC WORKS
BUREAU OF STREET USE AND MAPPING

MAP
SHOWING THE OFFICIAL GRADES OF SIDEWALK AND CURB ELEVATIONS ALONG FAIRFAX AVENUE, ACACIA AVENUE, CATALINA STREET, IRONWOOD WAY, AND MIDDLE POINT ROAD

REFERENCES: A-17-182
SCALE: 1" = 20' SHEET 7 OF 8 SHEETS

NO.	DATE	DESCRIPTION TABLE OF CHANGES	BY	CHECKED: JDF	DRAWN: NLC	APPROVED: <i>J. M. Ryan</i>	FILE: Q-20-1085
						DATE: 5-24-2021	

5/24/2021 5:11:18 PM James Smith Q:\2007\2007030.00\07030.00\EXH\07030-EXH Ph1 Q20 ROW SF DPW.dwg

CONT. ON SHT. 3

CONT. ON SHT. 7

APN 4624-23

APN 4624-24

APN 4624-25

210 CATALINA ST
APN 4624-27

130 ACACIA AVE
APN 4624-28

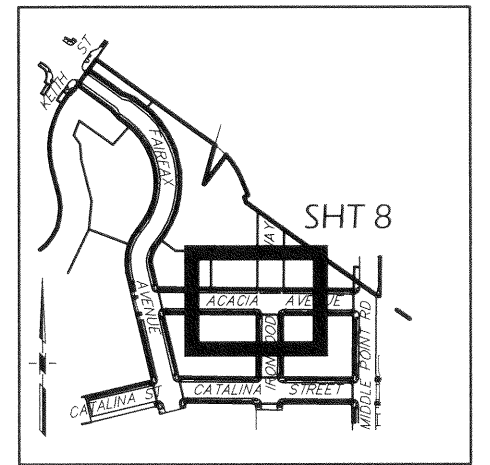
CONT. ON SHT. 5

LINE TABLE - SIDEWALK		
LINE #	LENGTH	DIRECTION
L32	147.50	S89°29'16.24"E
L33	147.50	S89°29'16.24"E
L34	54.00	S89°29'16.24"E
L35	131.00	S0°30'43.76"W
L36	131.00	S0°30'43.76"W
L37	196.65	S89°29'16.24"E
L38	209.99	S89°29'16.24"E

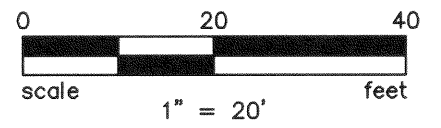
CURVE TABLE			
CURVE	RADIUS	DELTA	LENGTH
C32	10.00'	90°00'00"	15.71'
C33	10.00'	90°00'02"	15.71'

LINE TABLE-BSW & R/W		
LINE #	LENGTH	DIRECTION
L75	145.00	S89°29'16.24"E
L76	130.00	S0°30'43.76"W
L77	130.00	S0°30'43.76"W
L78	408.59	S89°29'16.24"E
L79	195.00	S89°29'16.24"E

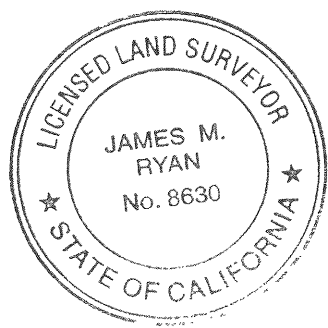
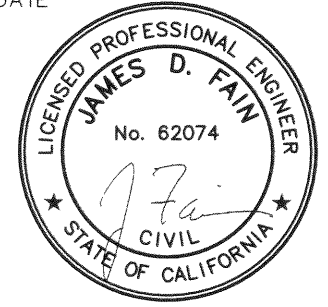
PRIVATE DRIVEWAY
APN 4624-35



KEY MAP



THIS MAP WAS PREPARED BY
ME OR UNDER MY DIRECTION.
MARCH 24, 2021
DATE



CITY AND COUNTY OF SAN FRANCISCO
SAN FRANCISCO PUBLIC WORKS
BUREAU OF STREET USE AND MAPPING

MAP
SHOWING THE OFFICIAL GRADES OF SIDEWALK
AND CURB ELEVATIONS ALONG FAIRFAX
AVENUE, ACACIA AVENUE, CATALINA STREET,
IRONWOOD WAY, AND MIDDLE POINT ROAD

REFERENCES: A-17-182
SCALE: 1" = 20' SHEET 8 OF 8 SHEETS

NO.	DATE	DESCRIPTION TABLE OF CHANGES	BY	CHECKED: JDF	DRAWN: NLC	APPROVED: <i>J. Fain</i>	FILE: Q-20-1085
						DATE: 5-24-2021	

