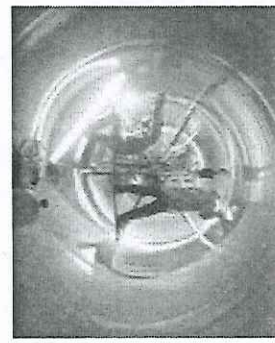
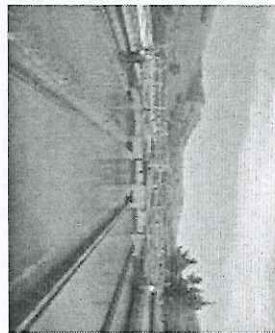
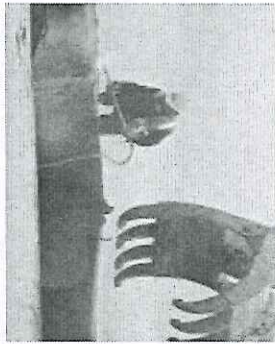
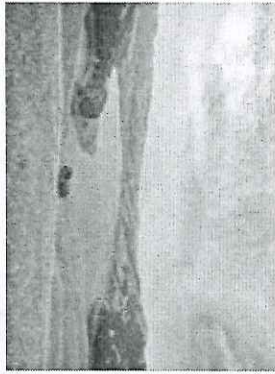




Services of the San Francisco Public Utilities Commission

*File # 150214
Received in Committee
3/25/15*



Amendments to Construction Management (CM) Services Agreements for Calaveras Dam Replacement and New Irvington Tunnel

**Daniel L. Wade, WSIP Director
San Francisco Board of Supervisors
Budget & Finance Committee
March 25, 2015**



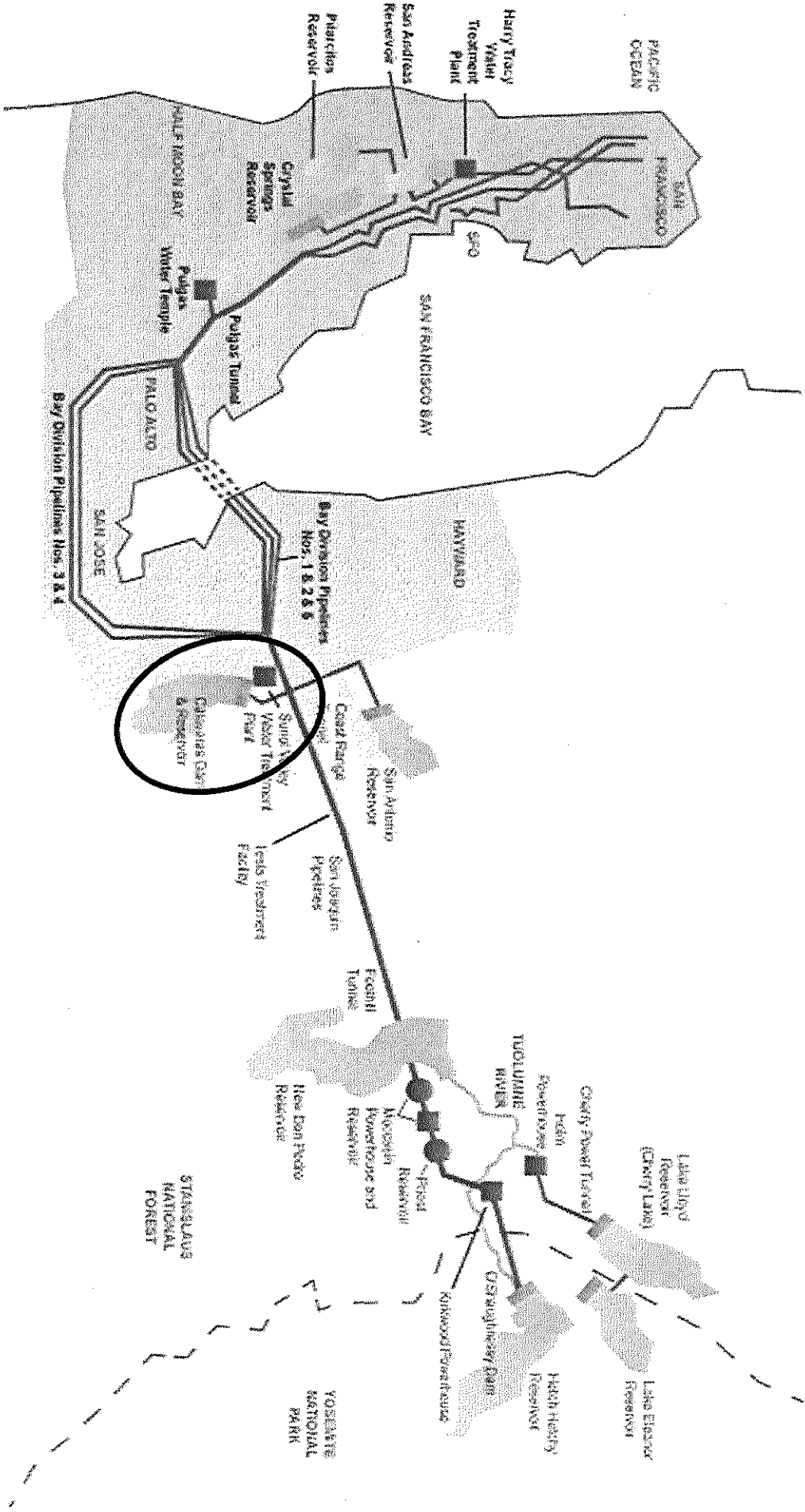
Agenda

- **CM Professional Services Agreement
Amendment with Black & Veatch Corporation for
Calaveras Dam Replacement (Agenda Item 4)**
- **CM Professional Services Agreement
Amendment with Hatch Mott MacDonald for New
Irvington Tunnel (Agenda Item 5)**



San Francisco
Water
Power
Sewer

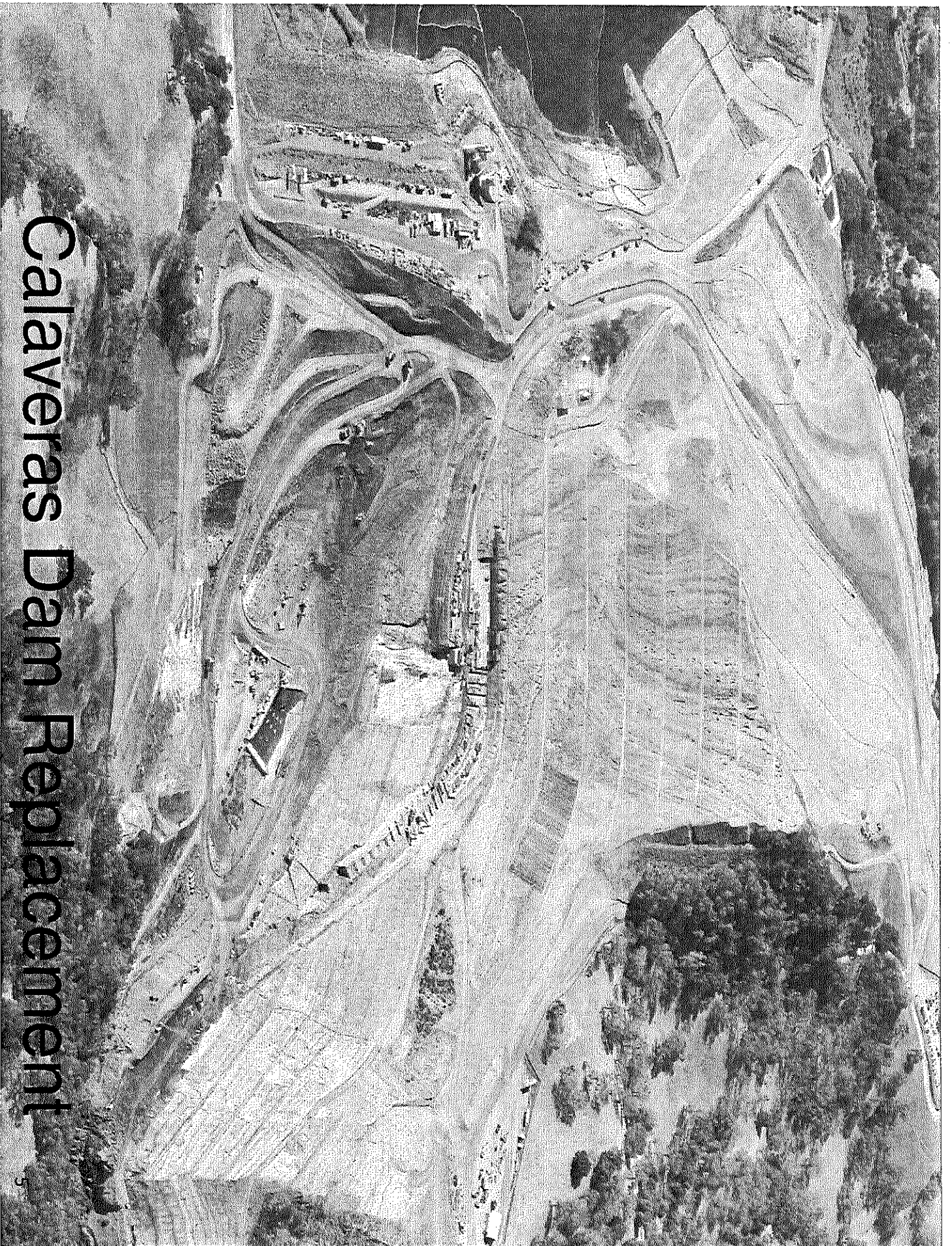
Sunol Valley





CM Services with Black & Veatch Corporation (Agenda Item 4)

- **Construction Management Services supporting Calaveras Dam Replacement Project (CDRP)**
 - Unanticipated geologic site conditions extended construction schedule by over 3 years
 - Over 60% construction complete
- **Additional CM Services needed to:**
 - Provide ongoing CM support during construction, start-up, commissioning and close out of project
 - Scope includes construction contract administration quality assurance inspection, testing, environmental compliance, community outreach, start-up, commissioning and close-out



Calaveras Dam Replacement



Requested Action (Agenda Item 4)

- Approve Amendment No. 2 to CS-911R with Black & Veatch Corporation
 - Increase contract amount by \$29.5M for a total not-to-exceed amount of \$68M
 - Extend agreement duration 2 years and 10 months, for a total agreement duration of 8 years and 10 months
- Amending the agreement will allow continued support of the construction activities to achieve timely completion of this critical WSIP project

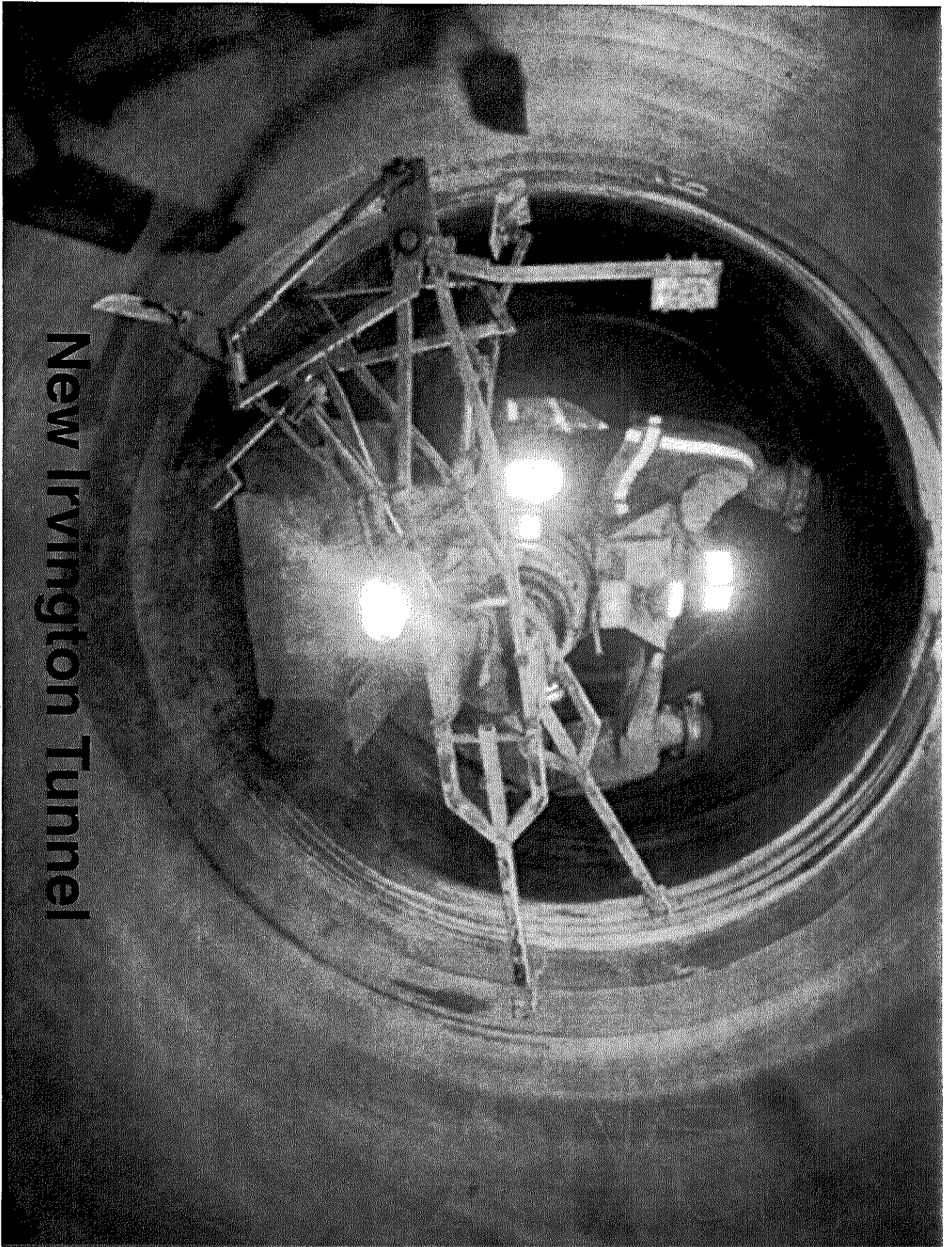


Questions?



CM Services with Hatch Mott MacDonald (Agenda Item 5)

- Construction Management Services supporting New Irvington Tunnel (NIT) Project:
 - Construction challenges with groundwater, gas, and varied geologic conditions extended schedule
 - Repairs to steel liner buckling required extended and double shifts
 - 96% construction complete
- Additional CM Services needed to
 - Continue as the consultant CM for final construction and close out of NIT project
 - Provide additional quality assurance inspection for the extended construction schedule

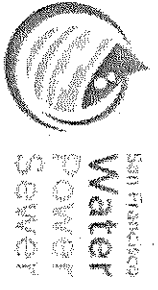


New Irvington Tunnel



Requested Action (Agenda Item 5)

- Approve Amendment No. 2 to CS-918 with Hatch Mott MacDonald
 - Increase contract amount by \$2M for a total not-to-exceed amount of \$19.5M
 - Extend agreement duration by one year for a total agreement duration of seven years
- Amending the agreement will allow continued support of the construction activities to achieve timely completion of this critical W/SIP project



Questions?

