

DEPARTMENT OF TRANSPORTATION

DISTRICT 4

OFFICE OF DESIGN WEST

P.O. BOX 23660, MS 9A

OAKLAND, CA 94623-0660

PHONE (510) 286-5633

FAX (510) 622-5122

TTY 711

www.dot.ca.gov

*Serious drought.
Help save water!*

August 19, 2016

File: 04-SF-101-PM T4.6/6.7

Relinquishment No. 56130

Mr. Mohammed Nuru
Director, Public Works Department
City Of San Francisco
1 Dr Carlton B Goodlett Pl.
Room 348
San Francisco, CA 94102

Dear Mr. Nuru:

This is in regards to your request addressed to Mr. Bijan Sartipi, District Director, requesting the above referenced relinquishment.

The State wishes to relinquish the sidewalks along Van Ness Avenue between Plum Street and Lombard Street as shown on the attached maps to the City and County of San Francisco. Please review the proposed relinquishment.

If the relinquishment is acceptable to the City and County of San Francisco, please provide:

- 1) A letter of resolution from the Board of Supervisors accepting the relinquishment,
- 2) The attached completed waiver of the 90-day notice of "Intention to relinquishment".

The Department would like to include this relinquishment in the October 2016 CTC Meeting agenda. Please return the signed form along with the resolution of the Board of Supervisors authorizing the City and County to waive the ninety (90) days' notice of "Intention to Relinquish" requirement by September 7, 2016.

If you have any questions, please call me at (510) 622-8826.

Sincerely,

A handwritten signature in black ink, appearing to read "Amir H. Sanatkar", written over a horizontal line.

Amir H. Sanatkar
Branch Chief

Enclosure

Mr. Mohammed Nuru
August 19, 2016
Page 2

STATE OF CALIFORNIA
DEPARTMENT OF TRANSPORTATION
111 GRAND AVENUE
OAKLAND, CA 94612
P. O. BOX 23660
OAKLAND, CA 94623-0660
PHONE (510) 286-5633

04-SF-101-PMT4.6/6.7
RELINQUISHMENT
No. 56130
Date: August 19, 2016

ATTN: Amir H. Sanatkar

The City and County of San Francisco has reviewed your offer to accept that portion of State Right of Way to be relinquished as per letter dated August 19, 2016, the maps and:

Please Check One:

- Yes, we are willing to accept the Relinquishment. Please proceed with preparing the final submittal.
- No, we are not interested in accepting the Relinquishment.
(Please list your reasons why)

Please Check One:

- Yes, we agree to waive the ninety (90) days' notice of "Intention to Relinquish" requirement contained in Section 73 of the Streets and Highways Code.
- No, we do not agree to waive the ninety (90) days' notice of "Intention to Relinquish" requirement contained in Section 73 of the Streets and Highway Code.

As the _____ for the City and County of _____
and having the authority to act on behalf of the City Council, I attest to the above checked items.

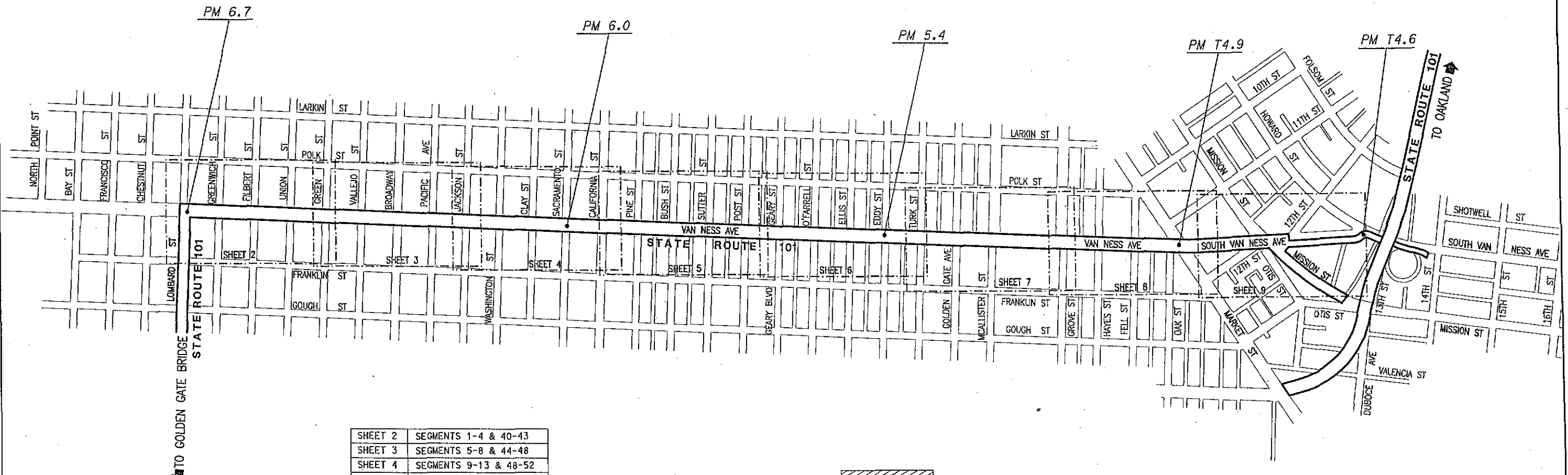
BY: _____

TITLE: _____


DATE: _____

CITY OF SAN FRANCISCO

NOTE: The State of California or its officers or agents shall not be responsible for the accuracy or completeness of digital images of this map.



SHEET 2	SEGMENTS 1-4 & 40-43
SHEET 3	SEGMENTS 5-8 & 44-48
SHEET 4	SEGMENTS 9-13 & 48-52
SHEET 5	SEGMENTS 13-21 & 52-60
SHEET 6	SEGMENTS 21-28 & 61-69
SHEET 7	SEGMENTS 29-34 & 70-75
SHEET 8	SEGMENTS 34-38 & 75-80
SHEET 9	SEGMENTS 38-39 & 80-83


 AREA TO BE RELINQUISHED TO
 THE CITY AND COUNTY OF SAN FRANCISCO
 (FROM TOP BACK OF CURB TO EXISTING STATE R/W)

NO SCALE

NOTE:
 FILING THIS MAP DOES NOT CONSTITUTE
 RELINQUISHMENT. RELINQUISHMENT IS
 COMPLETE WHEN THE RELATED CALIFORNIA
 TRANSPORTATION COMMISSION RESOLUTION
 IS RECORDED.

FILED IN THE OFFICE OF THE RECORDER
 OF THE CITY AND COUNTY OF SAN FRANCISCO

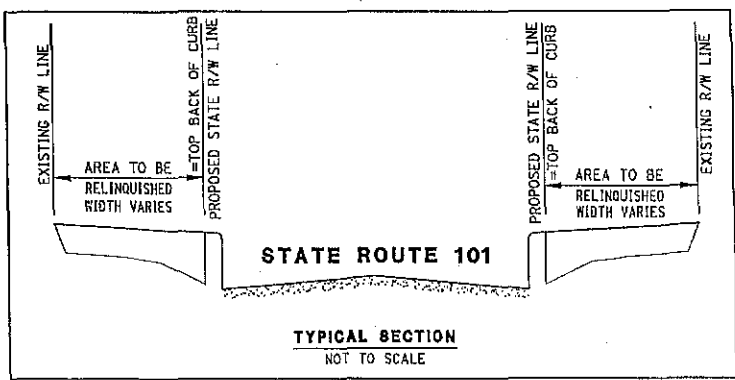
DATE:
 STATE HIGHWAY MAP BOOK PAGE
 SERIAL NO.



PROFESSIONAL LAND SURVEYOR

DATE

NOTE: The State's rights are not extinguished until recordation
 of related California Transportation Commission resolution.



STATE OF CALIFORNIA
 CALIFORNIA STATE TRANSPORTATION AGENCY
 DEPARTMENT OF TRANSPORTATION
**RIGHT OF WAY
 RELINQUISHMENT**
REL. NO. 56130
 TO THE CITY AND COUNTY OF SAN FRANCISCO
 FOR PREVIOUS R/W INFORMATION SEE
 MAP(S) R-30.18, R-65T.7,8,9 &10

DATE: 08/2016	EA(s): 3A2702	CONTRACT NO.: 3A2704			
DRAWN BY: A. ZHONG	CHECKED BY:				
DISTRICT	COUNTY	ROUTE	SHEET PM	SHEET NO.	TOTAL SHEETS
04	SF	101	T4.6/6.7	1	9

M-1608

PROJECT ID: 040000935

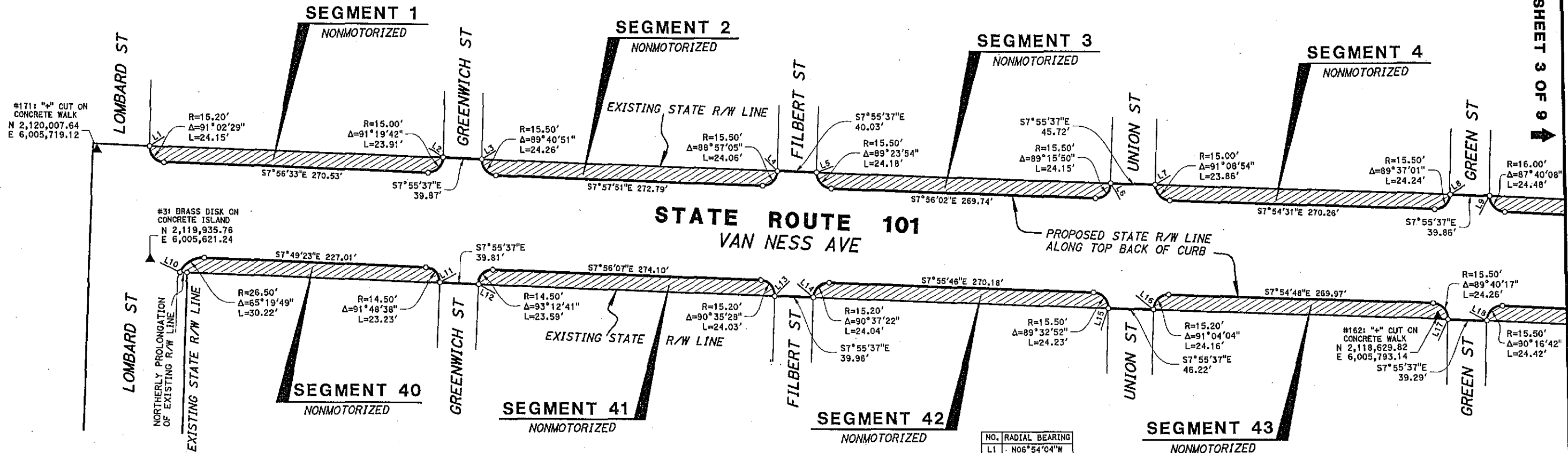
Coordinates and bearings are on CCS 1983, Zone 3, Epoch 2010.00. Distances and stationing are grid distances. Multiply by 0.99992656 to obtain ground distances. All distances are in feet unless otherwise noted.

CITY OF SAN FRANCISCO

NOTE: The State of California or its officers or agents shall not be responsible for the accuracy or completeness of digital images of this map.



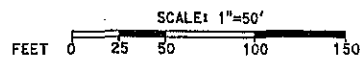
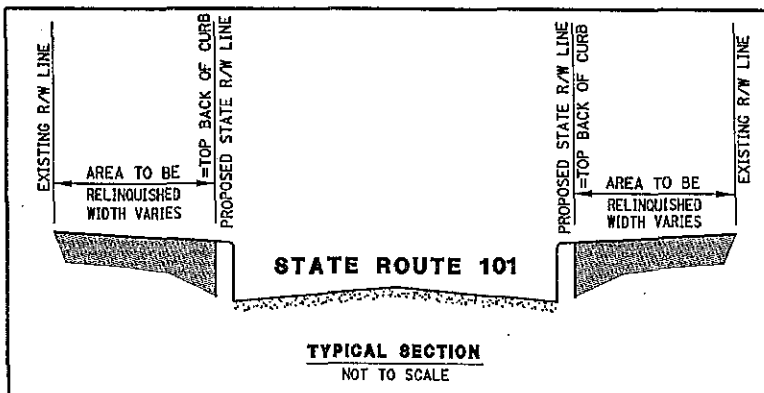
SEE SHEET 3 OF 9



NO.	RADIAL BEARING
L1	N06°54'04"W
L2	S09°16'15"E
L3	N08°17'00"W
L4	S06°54'56"E
L5	N08°32'08"W
L6	S07°11'52"E
L7	N06°45'38"W
L8	S07°31'32"E
L9	N10°15'58"W
L10	N16°50'48"E
L11	S06°00'45"E
L12	N11°08'48"W
L13	S07°20'39"E
L14	N08°33'07"W
L15	S08°22'54"E
L16	N08°58'52"W
L17	S08°14'31"E
L18	N08°11'19"W

NOTE:
RESERVING TO THE STATE OF CALIFORNIA AN EASEMENT FOR ANY AND ALL STATE OWNED FACILITIES AND RELATED APPURTENANCES, RESERVED HEREON WITHIN ALL SEGMENTS.

NOTE: The State's rights are not extinguished until recordation of related California Transportation Commission resolution.



AREA TO BE RELINQUISHED TO THE CITY AND COUNTY OF SAN FRANCISCO (FROM TOP BACK OF CURB TO EXISTING STATE R/W)

LEGEND
 ○ CALCULATED POINT
 ▲ CONTROL POINT USED AS NOTED
 (R) RADIAL BEARING
 R/W RIGHT OF WAY

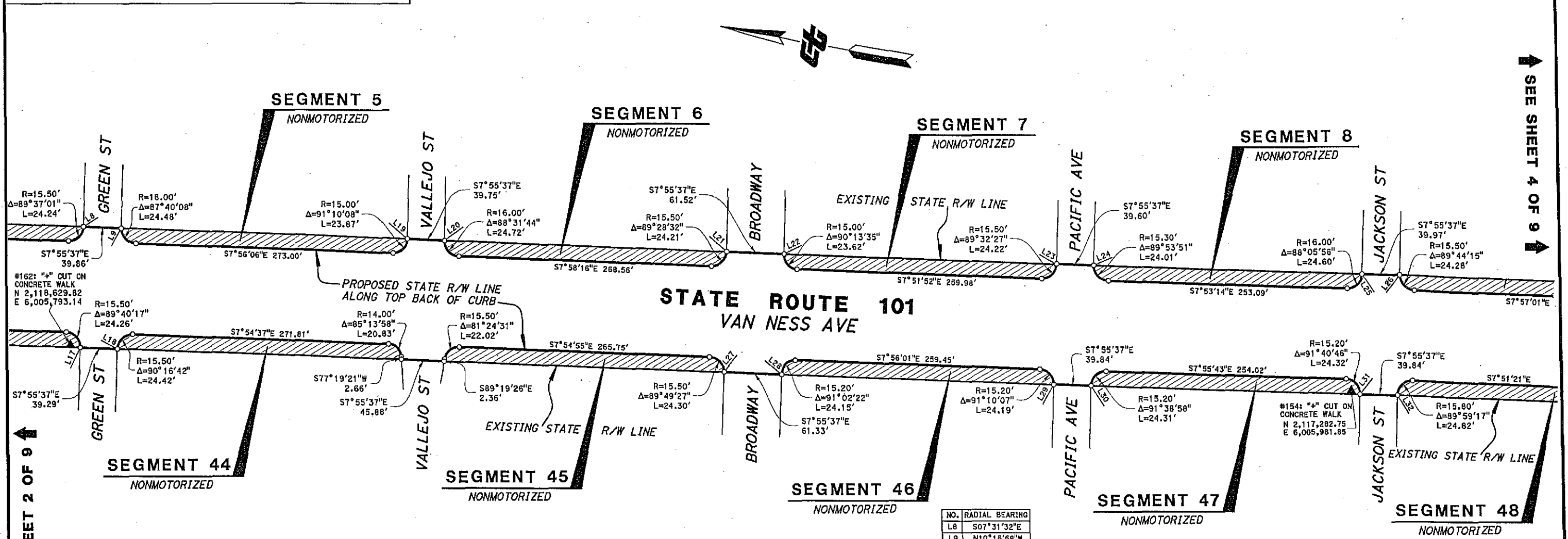
STATE OF CALIFORNIA
 CALIFORNIA STATE TRANSPORTATION AGENCY
 DEPARTMENT OF TRANSPORTATION
RIGHT OF WAY RELINQUISHMENT
 REL. NO. 56130
 TO THE CITY AND COUNTY OF SAN FRANCISCO
 FOR PREVIOUS R/W INFORMATION SEE MAP(S) R-651.7 & 9

DATE: 08/2016	EA(s): 3A2702	CONTRACT NO.: 3A2704
DRAWN BY: A. ZHONG	CHECKED BY:	
DISTRICT: 04	COUNTY: SF	ROUTE: 101
SHEET: 6.6	PM: 2	SHEET NO.: 2
TOTAL SHEETS: 9		

Coordinates and bearings are on CCS 1983, Zone 3, Epoch 2010.00. Distances and stationing are grid distances. Multiply by 0.99992656 to obtain ground distances. All distances are in feet unless otherwise noted.

CITY OF SAN FRANCISCO

NOTE: The State of California or its officers or agents shall not be responsible for the accuracy or completeness of digital images of this map.



SEE SHEET 2 OF 9

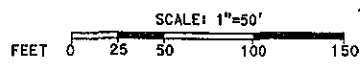
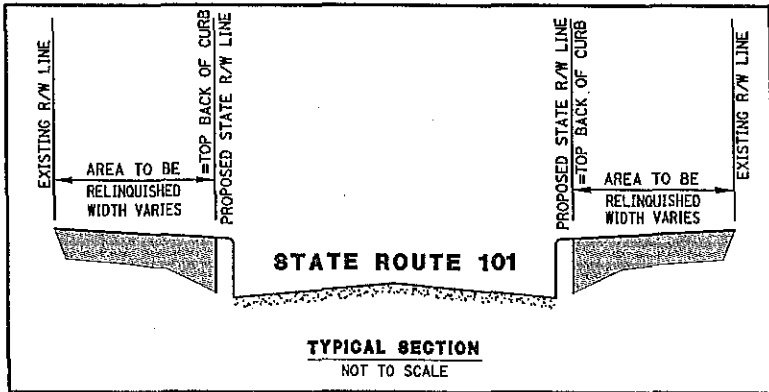
SEE SHEET 4 OF 9

STATE ROUTE 101 VAN NESS AVE

NO.	RADIAL BEARING
L8	S07°31'32"E
L9	N10°15'58"W
L17	S08°14'31"E
L18	N08°11'19"W
L19	S09°06'15"E
L20	N09°26'32"W
L21	S07°26'48"E
L22	N07°38'17"W
L23	S07°24'19"E
L24	N07°59'24"W
L25	S05°59'11"E
L26	N08°12'46"W
L27	S08°05'28"E
L28	N08°58'23"W
L29	S06°45'54"E
L30	N09°34'41"W
L31	S06°14'57"E
L32	N07°50'38"W

NOTE:
RESERVING TO THE STATE OF CALIFORNIA AN EASEMENT FOR ANY AND ALL STATE OWNED FACILITIES AND RELATED APPURTENANCES, RESERVED HEREON WITHIN ALL SEGMENTS.

NOTE: The State's rights are not extinguished until recordation of related California Transportation Commission resolution.



AREA TO BE RELINQUISHED TO THE CITY AND COUNTY OF SAN FRANCISCO (FROM TOP BACK OF CURB TO EXISTING STATE R/W)

LEGEND
 ○ CALCULATED POINT
 ▲ CONTROL POINT USED AS NOTED
 (R) RADIAL BEARING
 R/W RIGHT OF WAY

STATE OF CALIFORNIA
 CALIFORNIA STATE TRANSPORTATION AGENCY
 DEPARTMENT OF TRANSPORTATION
**RIGHT OF WAY
 RELINQUISHMENT**
 REL. NO. 56130
 TO THE CITY AND COUNTY OF SAN FRANCISCO
 FOR PREVIOUS R/W INFORMATION SEE
 MAP(S) R-65T.9 & 10

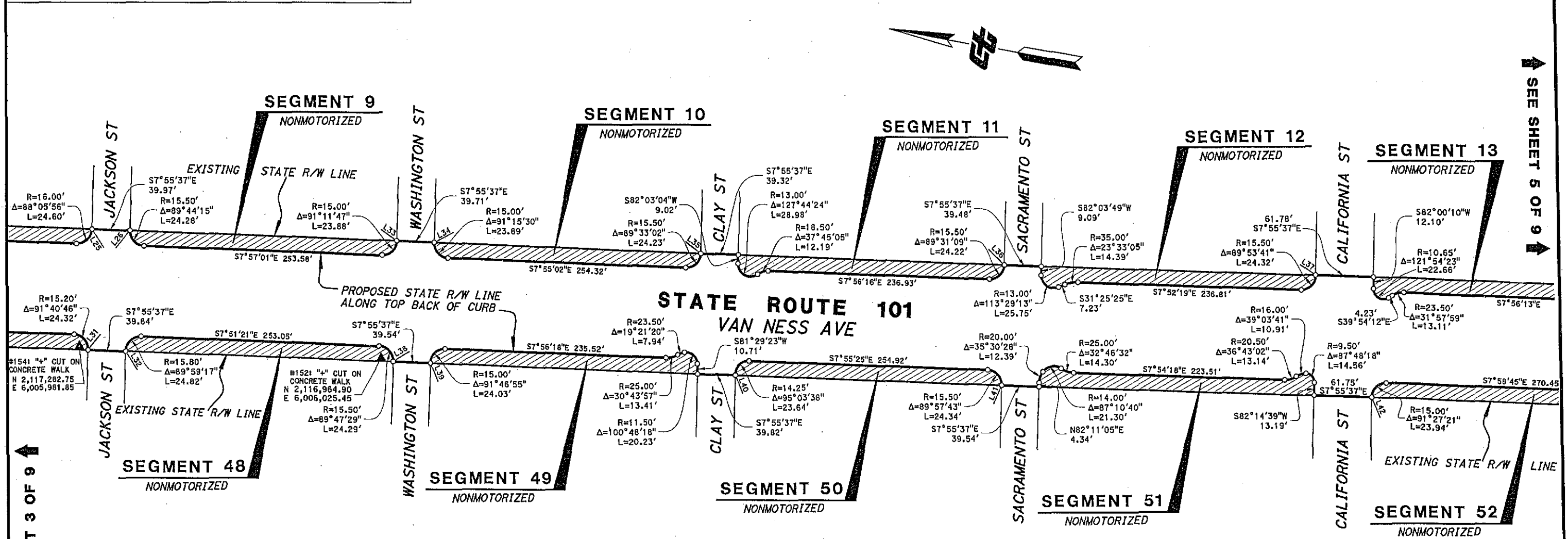
DATE: 08/2016	EA(s): 3A2702	CONTRACT NO.: 3A2704
DRAWN BY: A. ZHONG	CHECKED BY:	
DISTRICT: 04	COUNTY: SF	ROUTE: 101
SHEET PM: 6.3	SHEET NO.: 3	TOTAL SHEETS: 9

M-1608

Coordinates and bearings are on CCS 1983, Zone 3, Epoch 2010.00. Distances and stationing are grid distances. Multiply by 0.99992656 to obtain ground distances. All distances are in feet unless otherwise noted.

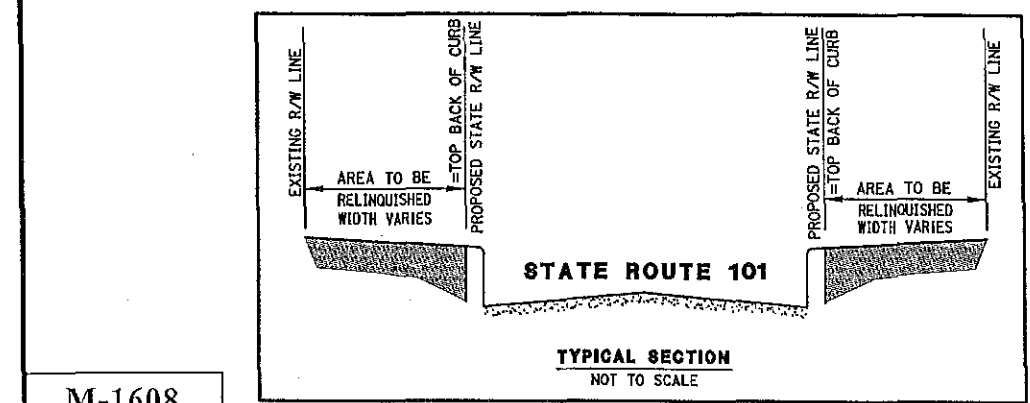
CITY OF SAN FRANCISCO

NOTE: The State of California or its officers or agents shall not be responsible for the accuracy or completeness of digital images of this map.

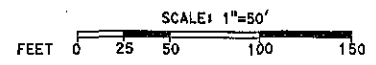


SEE SHEET 3 OF 9

SEE SHEET 5 OF 9



NOTE:
RESERVING TO THE STATE OF CALIFORNIA AN EASEMENT FOR ANY AND ALL STATE OWNED FACILITIES AND RELATED APPURTENANCES, RESERVED HEREON WITHIN ALL SEGMENTS.



AREA TO BE RELINQUISHED TO THE CITY AND COUNTY OF SAN FRANCISCO (FROM TOP BACK OF CURB TO EXISTING STATE R/W)

NO.	RADIAL BEARING
L25	S05°59'11"E
L26	N08°12'48"W
L31	S06°14'57"E
L32	N07°50'38"W
L33	S09°08'48"E
L34	N06°39'31"W
L35	S07°28'04"E
L36	S07°27'25"E
L37	S07°46'01"E
L38	S08°03'52"E
L39	N09°43'13"W
L40	N12°59'02"W
L41	S07°57'41"E
L42	N09°26'06"W

LEGEND
 ○ CALCULATED POINT
 ▲ CONTROL POINT USED AS NOTED
 (R) RADIAL BEARING
 R/W RIGHT OF WAY

NOTE: The State's rights are not extinguished until recordation of related California Transportation Commission resolution.

STATE OF CALIFORNIA
 CALIFORNIA STATE TRANSPORTATION AGENCY
 DEPARTMENT OF TRANSPORTATION
RIGHT OF WAY RELINQUISHMENT
 REL. NO. 56130
 TO THE CITY AND COUNTY OF SAN FRANCISCO
 FOR PREVIOUS R/W INFORMATION SEE MAP(S) R-65T.10

DATE: 08/2016	EA(s): 3A2702	CONTRACT NO.: 3A2704
DRAWN BY: A. ZHONG	CHECKED BY:	
DISTRICT: 04	COUNTY: SF	ROUTE: 101
SHEET: 6.1	PM: 4	SHEET NO.: 4
TOTAL SHEETS: 9		

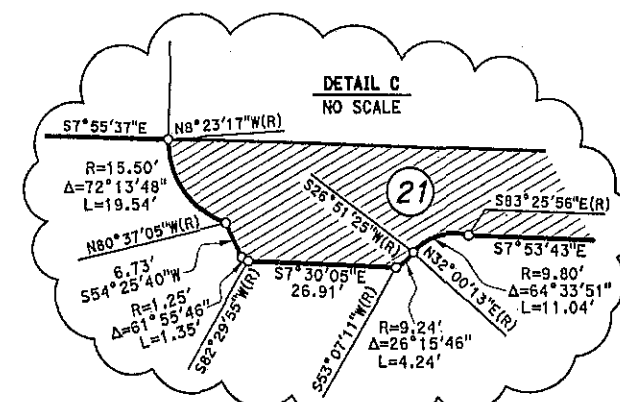
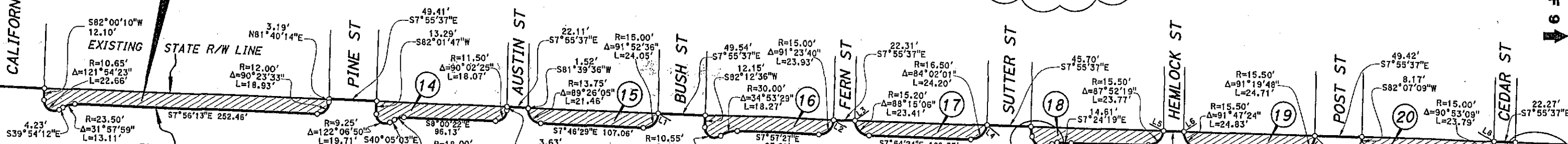
Coordinates and bearings are on CCS 1983, Zone 3, Epoch 2010.00. Distances and stationing are grid distances. Multiply by 0.99992656 to obtain ground distances. All distances are in feet unless otherwise noted.

CITY OF SAN FRANCISCO

NOTE: The State of California or its officers or agents shall not be responsible for the accuracy or completeness of digital images of this map.

CALIFORNIA ST

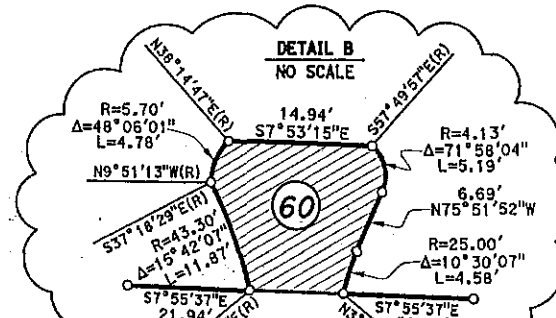
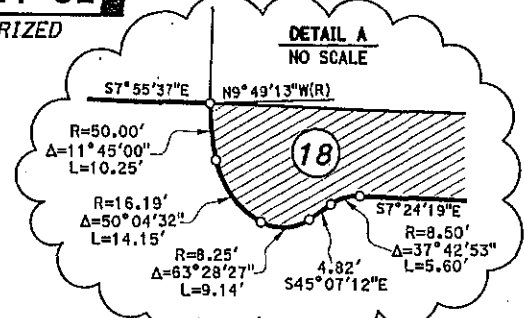
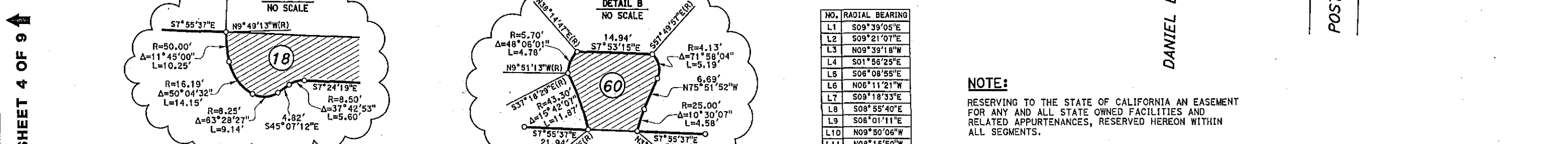
SEGMENT 13 NONMOTORIZED



SEE SHEET 6 OF 9

CALIFORNIA ST

SEGMENT 52 NONMOTORIZED

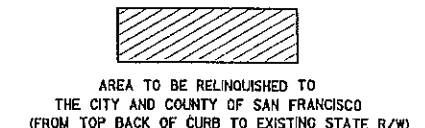
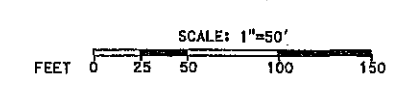
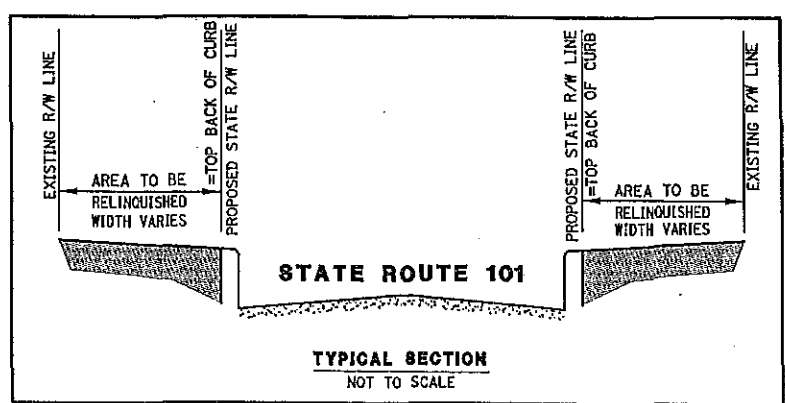


NOTE:
RESERVING TO THE STATE OF CALIFORNIA AN EASEMENT FOR ANY AND ALL STATE OWNED FACILITIES AND RELATED APPURTENANCES, RESERVED HEREON WITHIN ALL SEGMENTS.

NOTE: The State's rights are not extinguished until recordation of related California Transportation Commission resolution.

SEE SHEET 4 OF 9

NO.	RADIAL BEARING
L1	S09°39'05"E
L2	S09°21'07"E
L3	N09°39'18"W
L4	S01°56'25"E
L5	S06°08'55"E
L6	N06°11'21"W
L7	S09°18'33"E
L8	S08°55'40"E
L9	S08°01'11"E
L10	N09°50'06"W
L11	N08°15'50"W
L12	S06°37'42"E
L13	N09°36'12"W
L14	N08°02'29"W
L15	S06°38'40"E
L16	N07°59'45"W
L17	N07°50'54"W
L18	S29°49'38"E
L42	N09°26'06"W



- LEGEND**
- CALCULATED POINT
 - ▲ CONTROL POINT USED AS NOTED
 - (R) RADIAL BEARING
 - R/W RIGHT OF WAY
 - SEGMENT NUMBER, NONMOTORIZED

STATE OF CALIFORNIA
CALIFORNIA STATE TRANSPORTATION AGENCY
DEPARTMENT OF TRANSPORTATION
**RIGHT OF WAY
RELINQUISHMENT**
REL. NO. 56130
TO THE CITY AND COUNTY OF SAN FRANCISCO
FOR PREVIOUS R/W INFORMATION SEE
MAP(S) R-65T.10

DATE: 08/2016	EA(s): 3A2702	CONTRACT NO.: 3A2704			
DRAWN BY: A. ZHONG	CHECKED BY:				
DISTRICT	COUNTY	ROUTE	SHEET PM	SHEET NO.	TOTAL SHEETS
04	SF	101	5.8	5	9

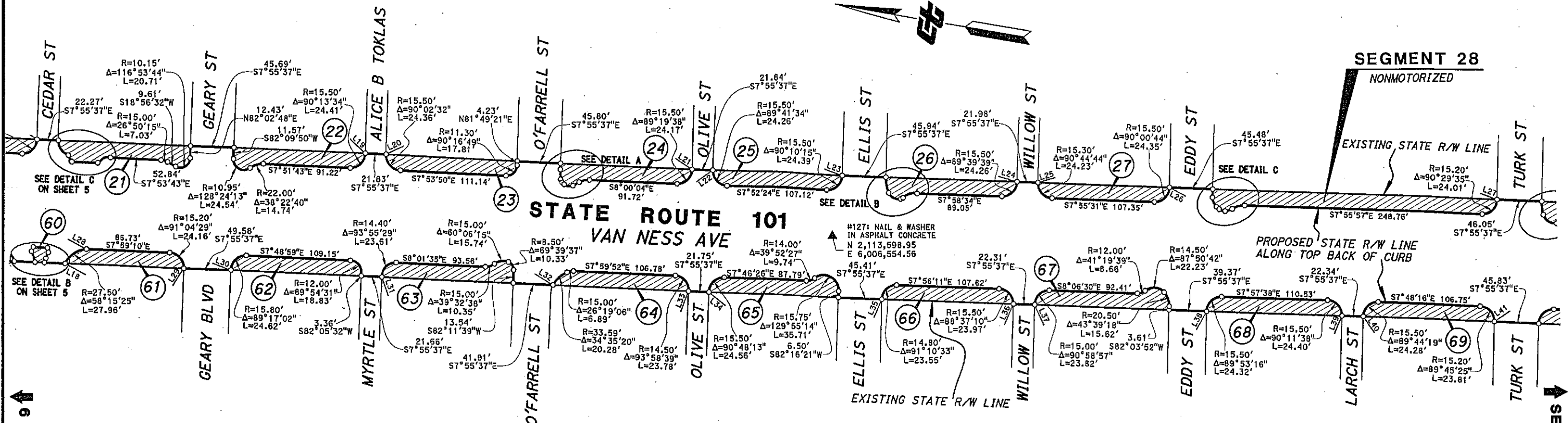
M-1608

PROJECT ID: 0400000935

Coordinates and bearings are on CCS 1983, Zone 3, Epoch 2010.00. Distances and stationing are grid distances. Multiply by 0.99992656 to obtain ground distances. All distances are in feet unless otherwise noted.

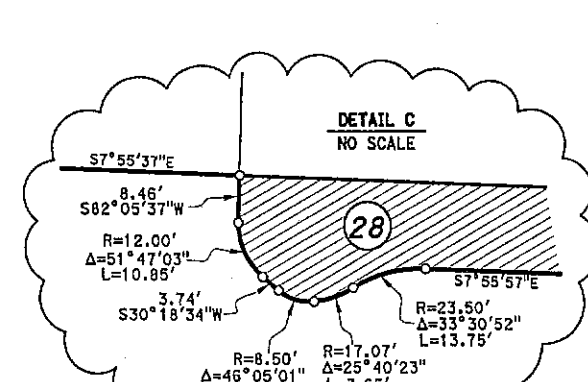
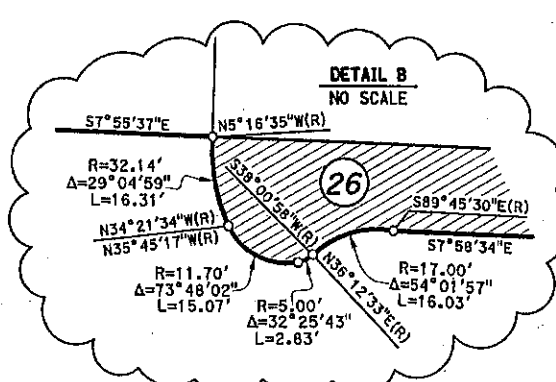
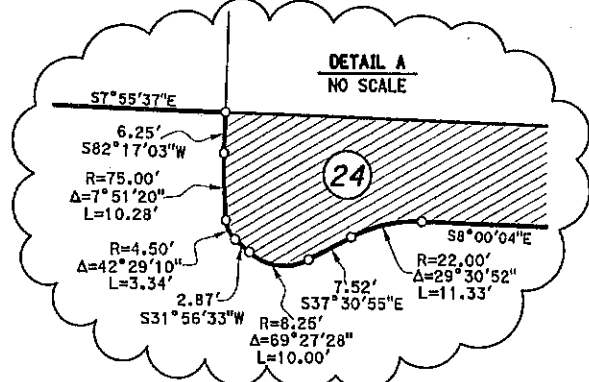
CITY OF SAN FRANCISCO

NOTE: The State of California or its officers or agents shall not be responsible for the accuracy or completeness of digital images of this map.



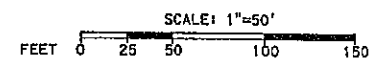
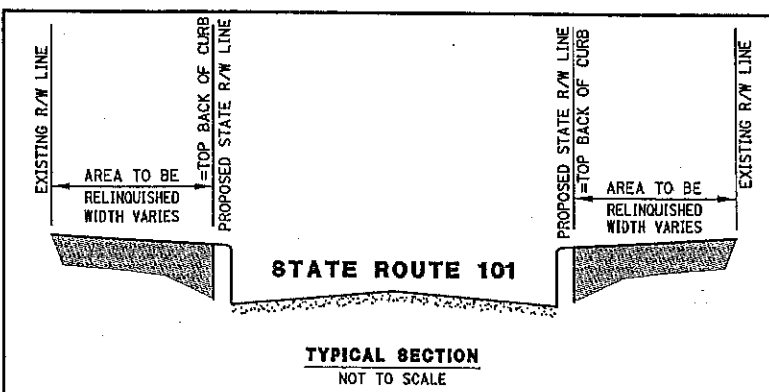
SEE SHEET 5 OF 9

SEE SHEET 7 OF 9



NO.	RADIAL BEARING	NO.	RADIAL BEARING
L18	N17°52'55"E	L30	N07°06'01"W
L19	S08°05'17"E	L31	N11°57'05"W
L20	N07°51'18"W	L32	N21°05'42"E
L21	S07°19'41"E	L33	S04°01'13"E
L22	N08°10'50"W	L34	N08°34'39"W
L23	S08°02'39"E	L35	N09°06'44"W
L24	S07°38'13"E	L36	S09°19'02"E
L25	N07°10'47"W	L37	N09°05'27"W
L26	S07°58'14"E	L38	N07°50'53"W
L27	S08°25'32"E	L39	S07°45'59"E
L28	N76°08'21"E	L40	N07°32'35"W
L29	S06°54'41"E	L41	S08°02'51"E

NOTE: The State's rights are not extinguished until recordation of related California Transportation Commission resolution.



AREA TO BE RELINQUISHED TO THE CITY AND COUNTY OF SAN FRANCISCO (FROM TOP BACK OF CURB TO EXISTING STATE R/W)

NOTE:
RESERVING TO THE STATE OF CALIFORNIA AN EASEMENT FOR ANY AND ALL STATE OWNED FACILITIES AND RELATED APPURTENANCES, RESERVED HEREON WITHIN ALL SEGMENTS.

- LEGEND**
- CALCULATED POINT
 - ▲ CONTROL POINT USED AS NOTED
 - (R) RADIAL BEARING
 - R/W RIGHT OF WAY
 - SEGMENT NUMBER, NONMOTORIZED

STATE OF CALIFORNIA
CALIFORNIA STATE TRANSPORTATION AGENCY
DEPARTMENT OF TRANSPORTATION

RIGHT OF WAY RELINQUISHMENT

REL. NO. 56130
TO THE CITY AND COUNTY OF SAN FRANCISCO
FOR PREVIOUS R/W INFORMATION SEE MAP(S) R-65T.8 & 10

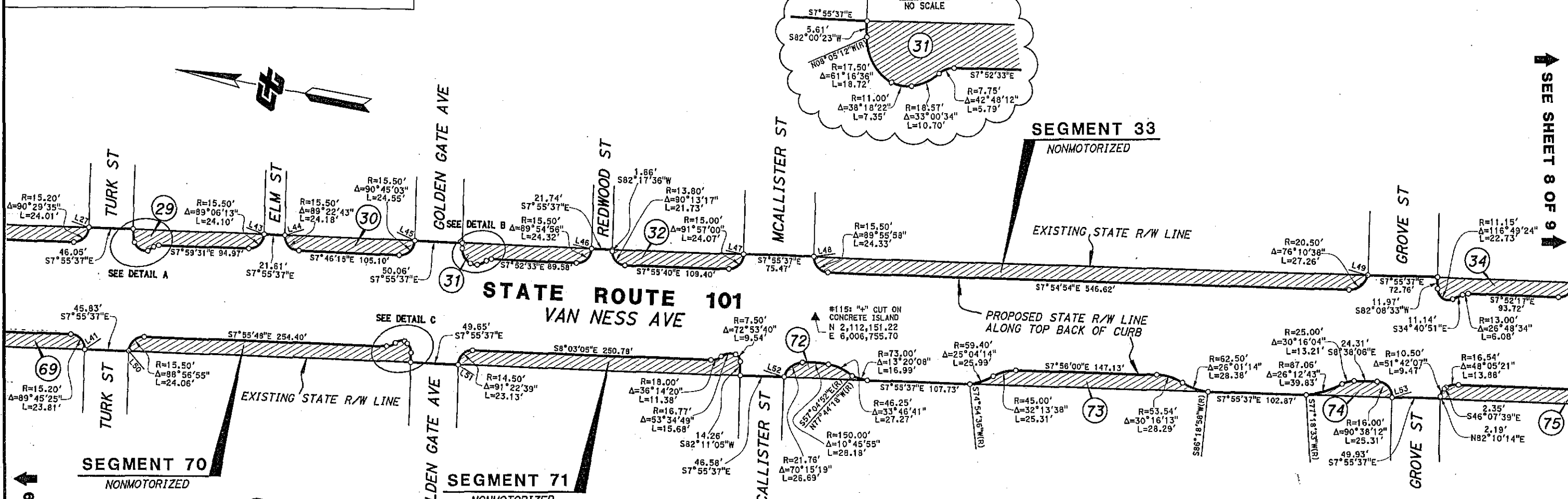
DATE: 08/2016	EA(s): 3A2702	CONTRACT NO.: 3A2704
DRAWN BY: A. ZHONG	CHECKED BY:	
DISTRICT: 04	COUNTY: SF	ROUTE: 101
SHEET PM: 5.5	SHEET NO.: 6	TOTAL SHEETS: 9

M-1608

Coordinates and bearings are on CCS 1983, Zone 3, Epoch 2010.00. Distances and stationing are grid distances. Multiply by 0.99992656 to obtain ground distances. All distances are in feet unless otherwise noted.

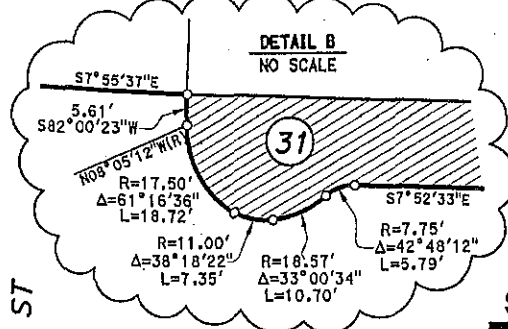
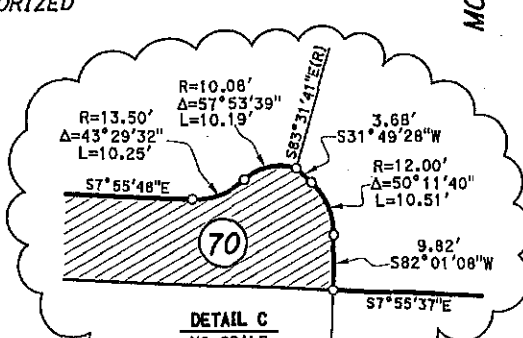
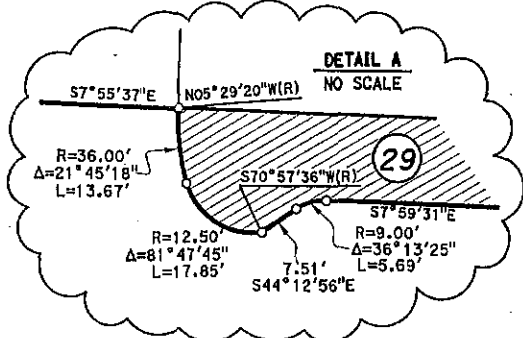
CITY OF SAN FRANCISCO

NOTE: The State of California or its officers or agents shall not be responsible for the accuracy or completeness of digital images of this map.



SEE SHEET 8 OF 9

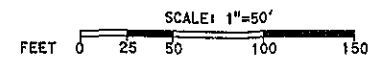
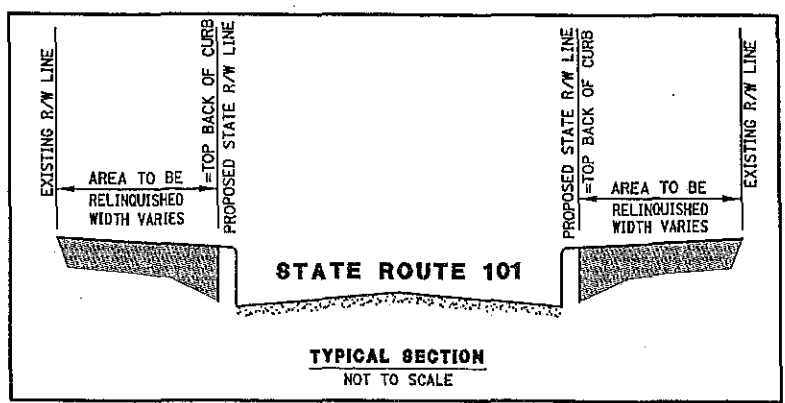
SEE SHEET 6 OF 9



NO.	RADIAL BEARING
L27	S08°25'32"E
L41	S08°02'51"E
L43	S07°05'44"E
L44	N08°23'31"W
L45	S08°31'17"E
L46	S07°47'29"E
L47	S09°52'40"E
L48	N07°58'56"W
L49	S05°54'28"W
L50	N06°52'43"W
L51	N09°25'44"W
L52	N08°07'12"E
L53	S07°59'54"E

NOTE:
RESERVING TO THE STATE OF CALIFORNIA AN EASEMENT FOR ANY AND ALL STATE OWNED FACILITIES AND RELATED APPURTENANCES, RESERVED HEREON WITHIN ALL SEGMENTS.

NOTE: The State's rights are not extinguished until recordation of related California Transportation Commission resolution.



LEGEND

- CALCULATED POINT
- ▲ CONTROL POINT USED AS NOTED
- (R) RADIAL BEARING
- R/W RIGHT OF WAY
- SEGMENT NUMBER, NONMOTORIZED

AREA TO BE RELINQUISHED TO THE CITY AND COUNTY OF SAN FRANCISCO (FROM TOP BACK OF CURB TO EXISTING STATE R/W)

STATE OF CALIFORNIA
CALIFORNIA STATE TRANSPORTATION AGENCY
DEPARTMENT OF TRANSPORTATION
**RIGHT OF WAY
RELINQUISHMENT**
REL. NO. 56130
TO THE CITY AND COUNTY OF SAN FRANCISCO
FOR PREVIOUS R/W INFORMATION SEE
MAP(S) R-65T.8

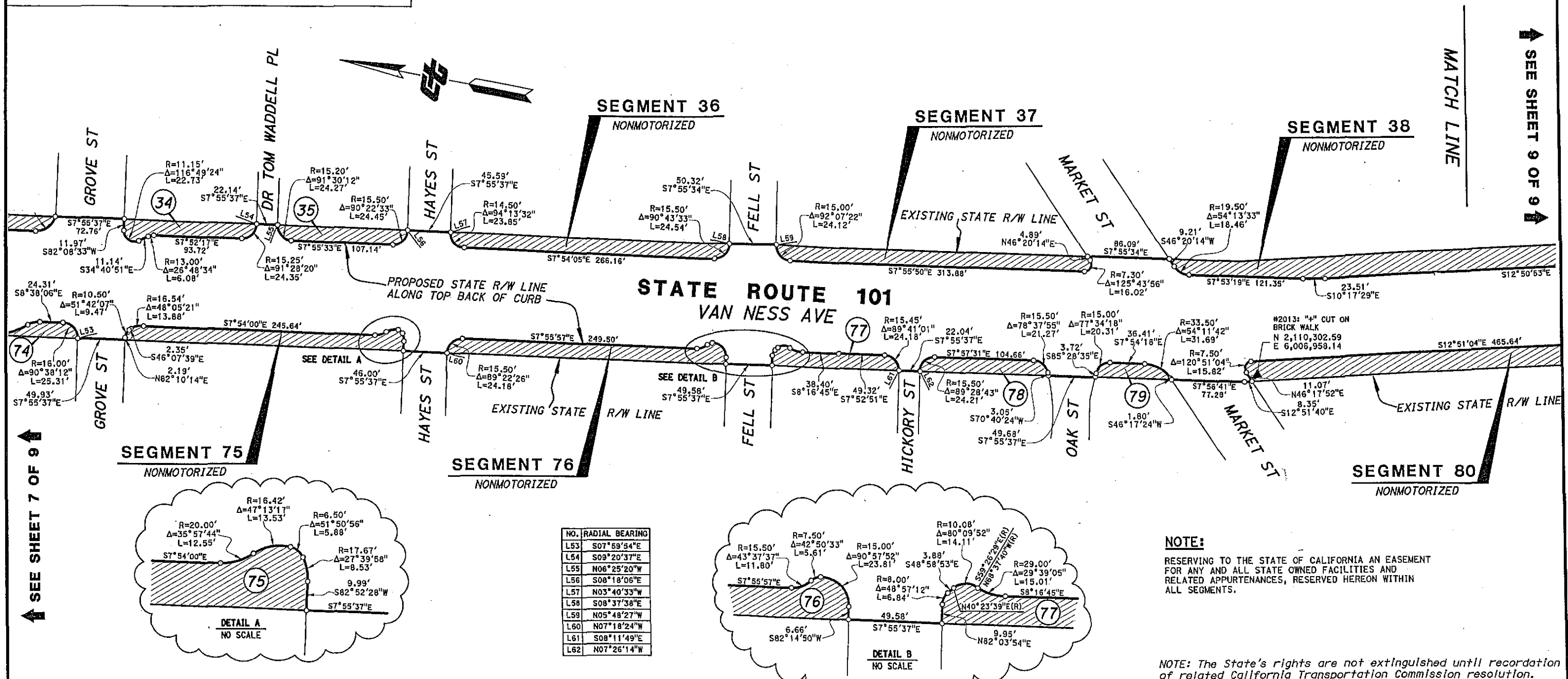
DATE: 08/2016	EA(s): 3A2702	CONTRACT NO.: 3A2704			
DRAWN BY: A. ZHONG	CHECKED BY:				
DISTRICT	COUNTY	ROUTE	SHEET PM	SHEET NO.	TOTAL SHEETS
04	SF	101	5.2	7	9

M-1608

Coordinates and bearings are on CCS 1983, Zone 3, Epoch 2010.00. Distances and stationing are grid distances. Multiply by 0.99992656 to obtain ground distances. All distances are in feet unless otherwise noted.

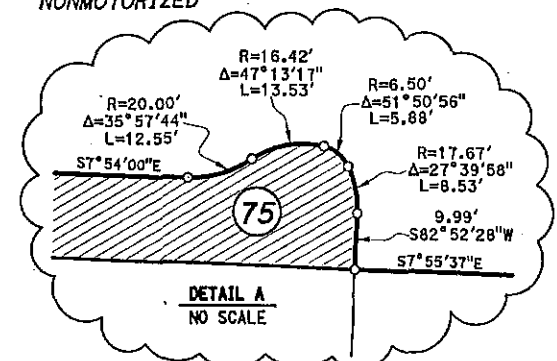
CITY OF SAN FRANCISCO

NOTE: The State of California or its officers or agents shall not be responsible for the accuracy or completeness of digital images of this map.

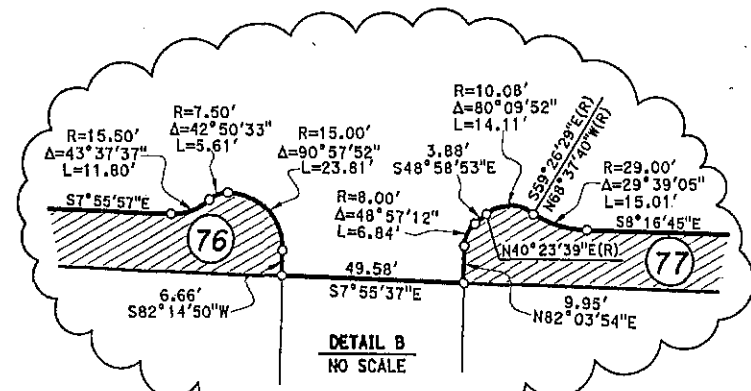


SEE SHEET 7 OF 9

SEE SHEET 9 OF 9

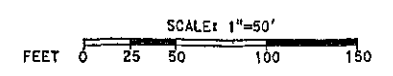
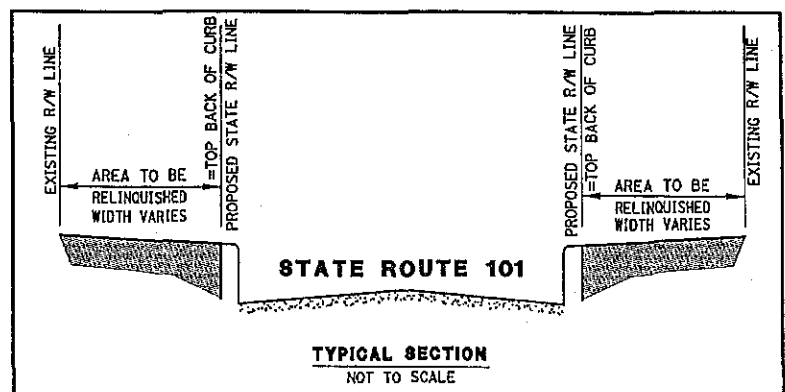


NO.	RADIAL BEARING
L53	S07°59'54"E
L54	S09°20'37"E
L55	N06°25'20"W
L56	S08°18'06"E
L57	N03°40'33"W
L58	S08°37'38"E
L59	N05°48'27"W
L60	N07°18'24"W
L61	S08°11'49"E
L62	N07°26'14"W



NOTE:
RESERVING TO THE STATE OF CALIFORNIA AN EASEMENT FOR ANY AND ALL STATE OWNED FACILITIES AND RELATED APPURTENANCES, RESERVED HEREON WITHIN ALL SEGMENTS.

NOTE: The State's rights are not extinguished until recordation of related California Transportation Commission resolution.



AREA TO BE RELINQUISHED TO THE CITY AND COUNTY OF SAN FRANCISCO (FROM TOP BACK OF CURB TO EXISTING STATE R/W)

- LEGEND**
- CALCULATED POINT
 - ▲ CONTROL POINT USED AS NOTED
 - (R) RADIAL BEARING
 - R/W RIGHT OF WAY
 - SEGMENT NUMBER, NONMOTORIZED

STATE OF CALIFORNIA
CALIFORNIA STATE TRANSPORTATION AGENCY
DEPARTMENT OF TRANSPORTATION
**RIGHT OF WAY
RELINQUISHMENT**
REL. NO. 56130
TO THE CITY AND COUNTY OF SAN FRANCISCO
FOR PREVIOUS R/W INFORMATION SEE
MAP(S) R-65T.8

DATE: 08/2016	EA(s): 3A2702	CONTRACT NO.: 3A2704			
DRAWN BY: A. ZHONG	CHECKED BY:				
DISTRICT	COUNTY	ROUTE	SHEET PM	SHEET NO.	TOTAL SHEETS
04	SF	101	5.0	8	9

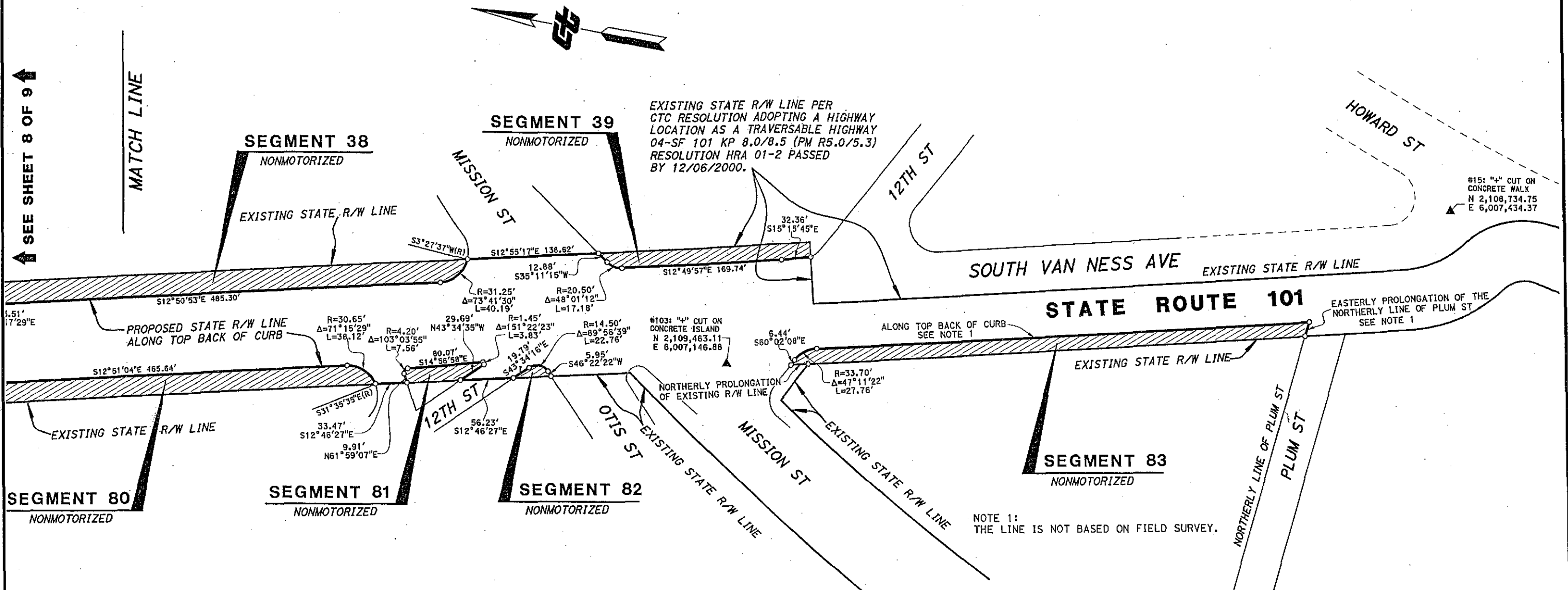
M-1608

Coordinates and bearings are on CCS 1983, Zone 3, Epoch 2010.00. Distances and stationing are grid distances. Multiply by 0.99992656 to obtain ground distances. All distances are in feet unless otherwise noted.

CITY OF SAN FRANCISCO

NOTE: The State of California or its officers or agents shall not be responsible for the accuracy or completeness of digital images of this map.

↑ SEE SHEET 8 OF 9 ↑



EXISTING STATE R/W LINE PER CTC RESOLUTION ADOPTING A HIGHWAY LOCATION AS A TRAVERSABLE HIGHWAY 04-SF 101 KP 8.0/8.5 (PM R5.0/5.3) RESOLUTION HRA 01-2 PASSED BY 12/06/2000.

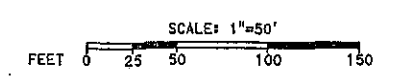
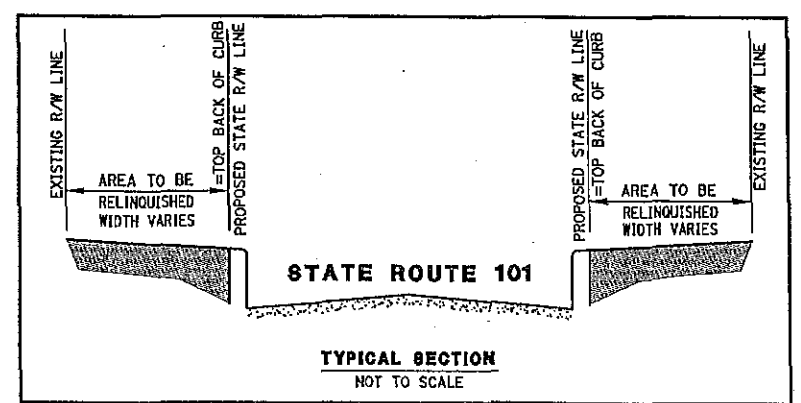
#15: "4" CUT ON CONCRETE WALK
N 2,108,734.75
E 6,007,434.37

#103: "4" CUT ON CONCRETE ISLAND
N 2,109,463.11
E 6,007,146.88

NOTE 1:
THE LINE IS NOT BASED ON FIELD SURVEY.

NOTE: The State's rights are not extinguished until recordation of related California Transportation Commission resolution.

NOTE:
RESERVING TO THE STATE OF CALIFORNIA AN EASEMENT FOR ANY AND ALL STATE OWNED FACILITIES AND RELATED APPURTENANCES, RESERVED HEREON WITHIN ALL SEGMENTS.



AREA TO BE RELINQUISHED TO THE CITY AND COUNTY OF SAN FRANCISCO (FROM TOP BACK OF CURB TO EXISTING STATE R/W)

- LEGEND**
- CALCULATED POINT
 - ▲ CONTROL POINT USED AS NOTED
 - (R) RADIAL BEARING
 - R/W RIGHT OF WAY

STATE OF CALIFORNIA
CALIFORNIA STATE TRANSPORTATION AGENCY
DEPARTMENT OF TRANSPORTATION
**RIGHT OF WAY
RELINQUISHMENT**
REL. NO. 56130
TO THE CITY AND COUNTY OF SAN FRANCISCO
FOR PREVIOUS R/W INFORMATION SEE
MAP(S) R-30.18 & R-65T.8

DATE: 08/2016	EA(s): 3A2702	CONTRACT NO.: 3A2704
DRAWN BY: A. ZHONG	CHECKED BY:	
DISTRICT	COUNTY	ROUTE
04	SF	101
SHEET	PM	SHEET NO.
T4.7		9
TOTAL SHEETS		9

M-1608

PROJECT ID: 040000935