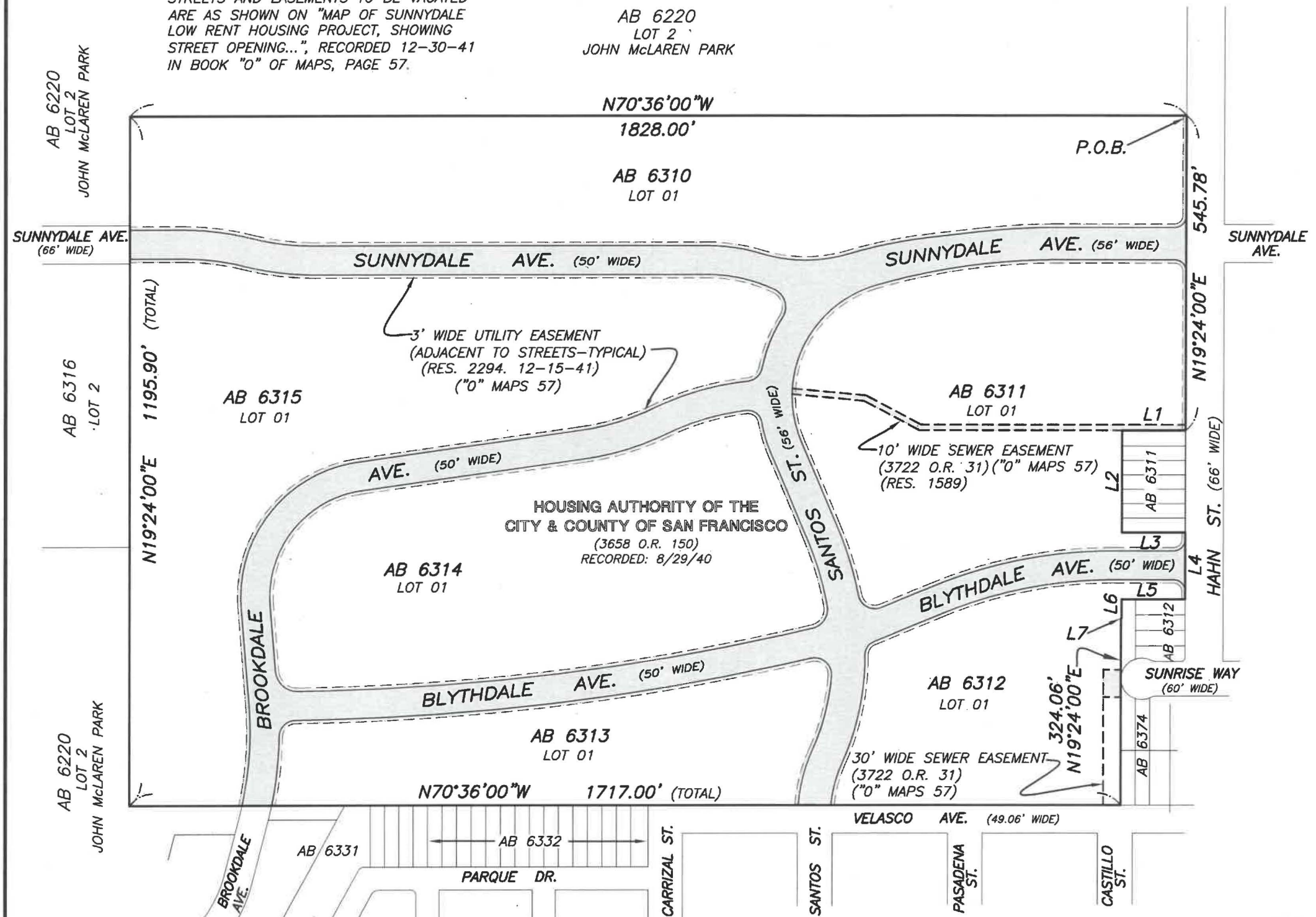
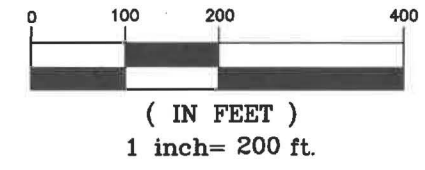


**NOTE**  
STREETS AND EASEMENTS TO BE VACATED ARE AS SHOWN ON "MAP OF SUNNYDALE LOW RENT HOUSING PROJECT, SHOWING STREET OPENING...", RECORDED 12-30-41 IN BOOK "O" OF MAPS, PAGE 57.

AB 6220  
LOT 2  
JOHN McLAREN PARK

GRAPHIC SCALE



**LINE TABLE**

LINE	BEARING	DISTANCE
L1	S70°36'00"E	110.00'
L2	N19°24'00"E	177.00'
L3	N70°36'00"W	110.00'
L4	N19°24'00"E	116.06'
L5	S70°36'00"E	110.00'
L6	N19°24'00"E	33.00'
L7	S70°36'00"E	1.00'

**LEGEND**

	PORTIONS OF CITY STREETS AND EASEMENTS BEING VACATED
	ASSESSOR'S BLOCK & LOT PERIMETER BOUNDARY OF THE SUNNYDALE PROJECT (3658 O.R. 150)
	PROLONGATION OF PERIMETER BOUNDARY LINE THROUGH CITY STREETS



APPROVED:   
 \_\_\_\_\_  
 BRUCE R. STORRS  
 CITY & COUNTY SURVEYOR

DATE: 12/19/2018

**CITY AND COUNTY OF SAN FRANCISCO PUBLIC WORKS**  
 SUBDIVISION AND MAPPING

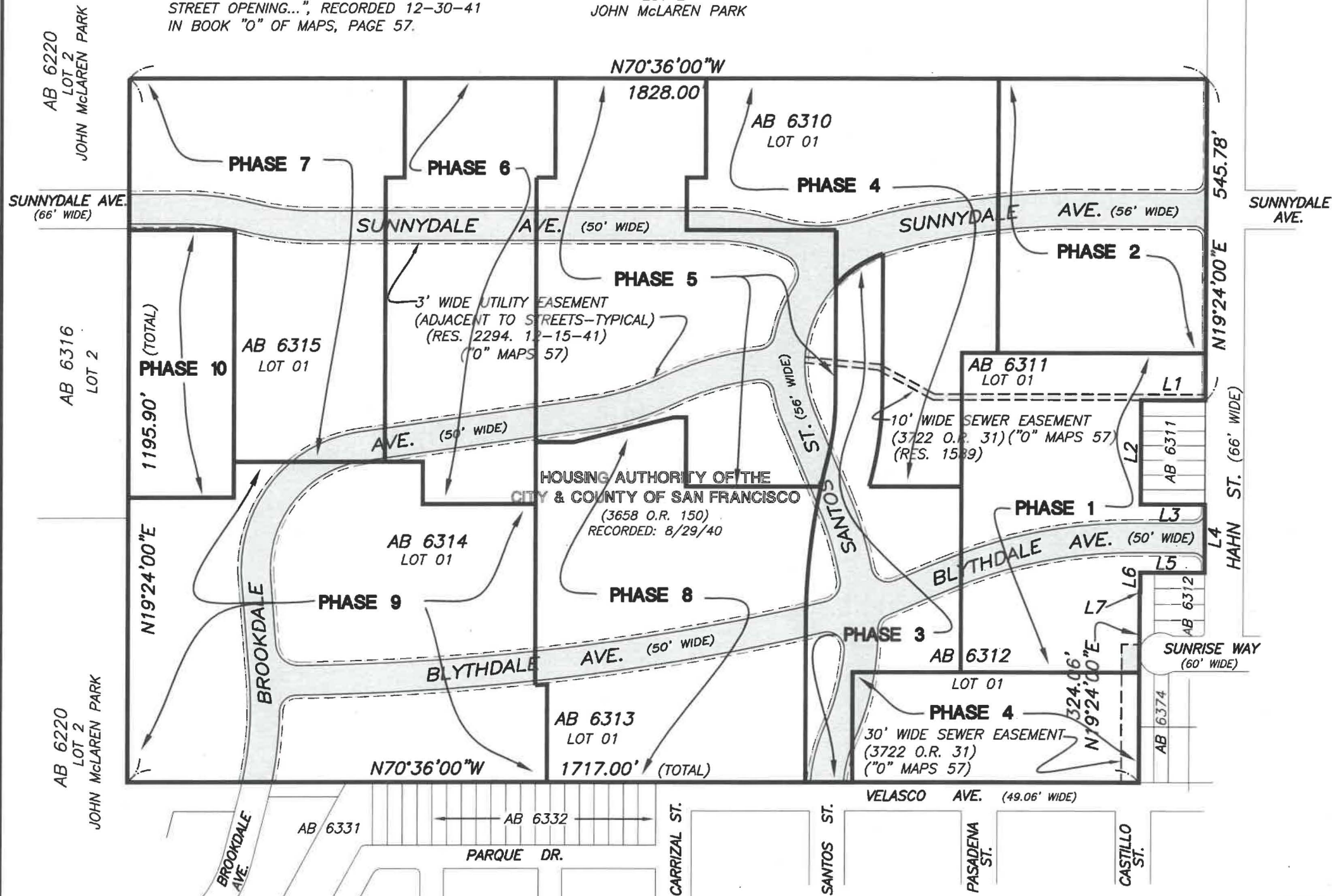
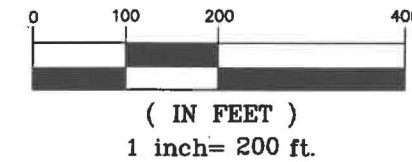
VACATION OF CITY STREETS AND EASEMENTS FOR THE  
 SUNNYDALE AFFORDABLE HOUSING PROJECT

FILE: SUR 2018-002	SHEET 1 OF 2	SCALE: 1:200	REVISION
--------------------	--------------	--------------	----------

**NOTE**  
STREETS AND EASEMENTS TO BE VACATED ARE AS SHOWN ON "MAP OF SUNNYDALE LOW RENT HOUSING PROJECT, SHOWING STREET OPENING...", RECORDED 12-30-41 IN BOOK "O" OF MAPS, PAGE 57.

AB 6220  
LOT 2  
JOHN McLAREN PARK


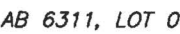


GRAPHIC SCALE




LINE TABLE

LINE	BEARING	DISTANCE
L1	S70°36'00"E	110.00'
L2	N19°24'00"E	177.00'
L3	N70°36'00"W	110.00'
L4	N19°24'00"E	116.06'
L5	S70°36'00"E	110.00'
L6	N19°24'00"E	33.00'
L7	S70°36'00"E	1.00'

LEGEND

-  PORTIONS OF CITY STREETS AND EASEMENTS BEING VACATED
-  AB 6311, LOT 01
-  PERIMETER BOUNDARY OF THE SUNNYDALE PROJECT (3658 O.R. 150)
-  PROLONGATION OF PERIMETER BOUNDARY LINE THROUGH CITY STREETS
- PHASE 1** FINAL MAP PHASE



APPROVED:   
 BRUCE R. STORRS  
 CITY & COUNTY SURVEYOR

DATE: 12/19/2018

CITY AND COUNTY OF SAN FRANCISCO PUBLIC WORKS  
 SUBDIVISION AND MAPPING

VACATION OF CITY STREETS AND EASEMENTS FOR THE  
 SUNNYDALE AFFORDABLE HOUSING PROJECT

FILE: SUR 2018-002	SHEET 2 OF 2	SCALE: 1:200	REVISION
--------------------	--------------	--------------	----------