



SFMTA

## CEQA Appeal - Project Sponsor Responses

1. Emergency Temporary Transit Lanes
2. Panhandle Social Distancing & Safety Project
3. COVID Temporary Street Changes
4. Slow Streets Phase 3

Board of Supervisors

September 29, 2020



**Stay 6 feet apart**

請與他人保持6呎距離

Manténgase a un mínimo de seis (6) pies de los demás

Magbigay ng 6 na talampakang distansya mula sa isa't isa

SF.gov/coronavirus



**Jan 27**  
 City Opens  
 Covid  
 Command  
 Center

**Feb 25**  
 Mayor  
 Declares  
 Local  
 Emergency

**March 16**  
 Public  
 Health  
 Order  
 Issued

**April 8**  
 Muni  
 Service  
 Reduced to  
 Core  
 System



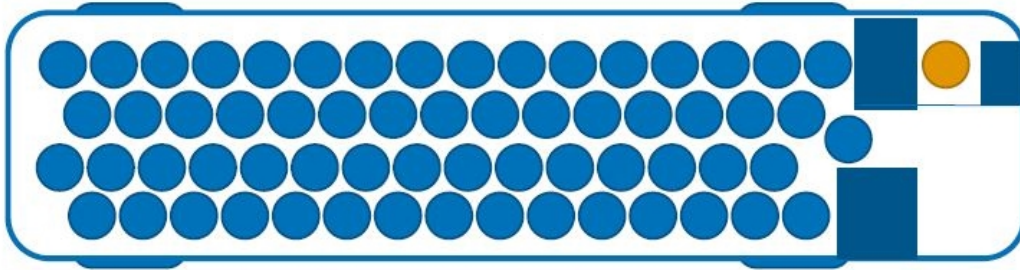
**SFMTA**

# **Transportation Recovery Plan:**

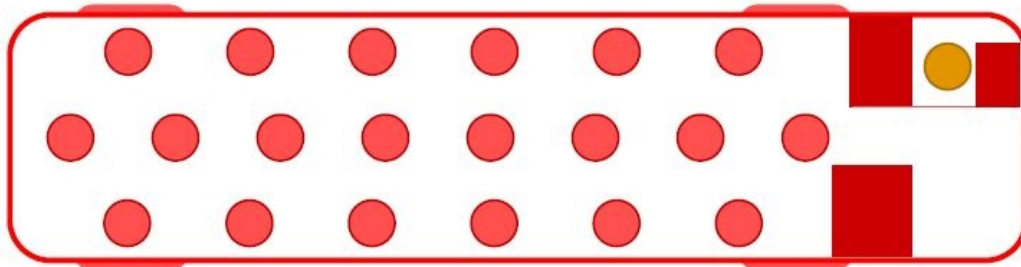
## **COVID-19 Emergency Temporary Transit Lanes and COVID-19 Emergency Temporary Bikeways Project**

Michael Rhodes, SFMTA

# Service Impacts of COVID-19

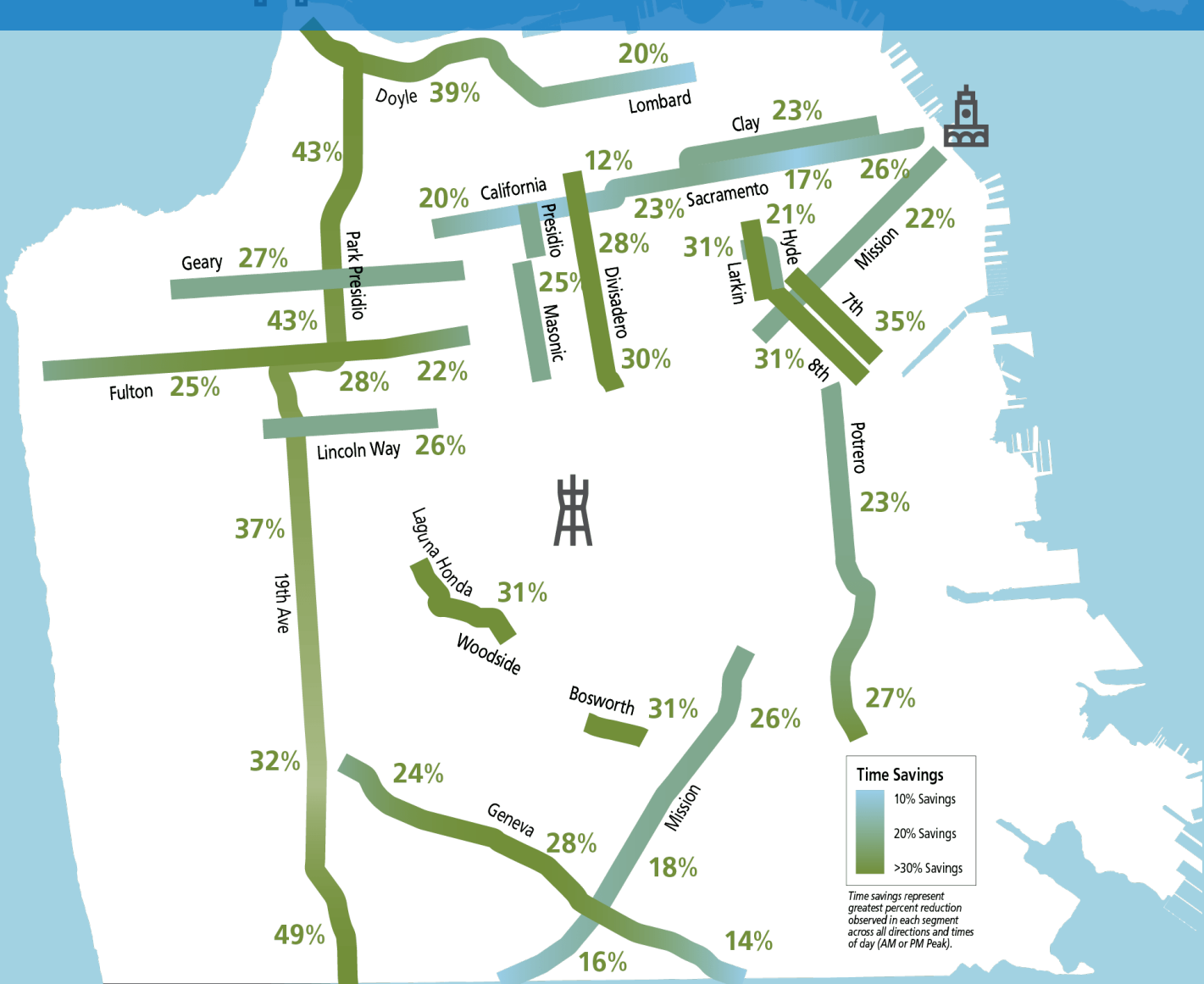


**Before  
COVID crisis**



**Today**

# Time Savings During Shelter in Place



**Time Savings**

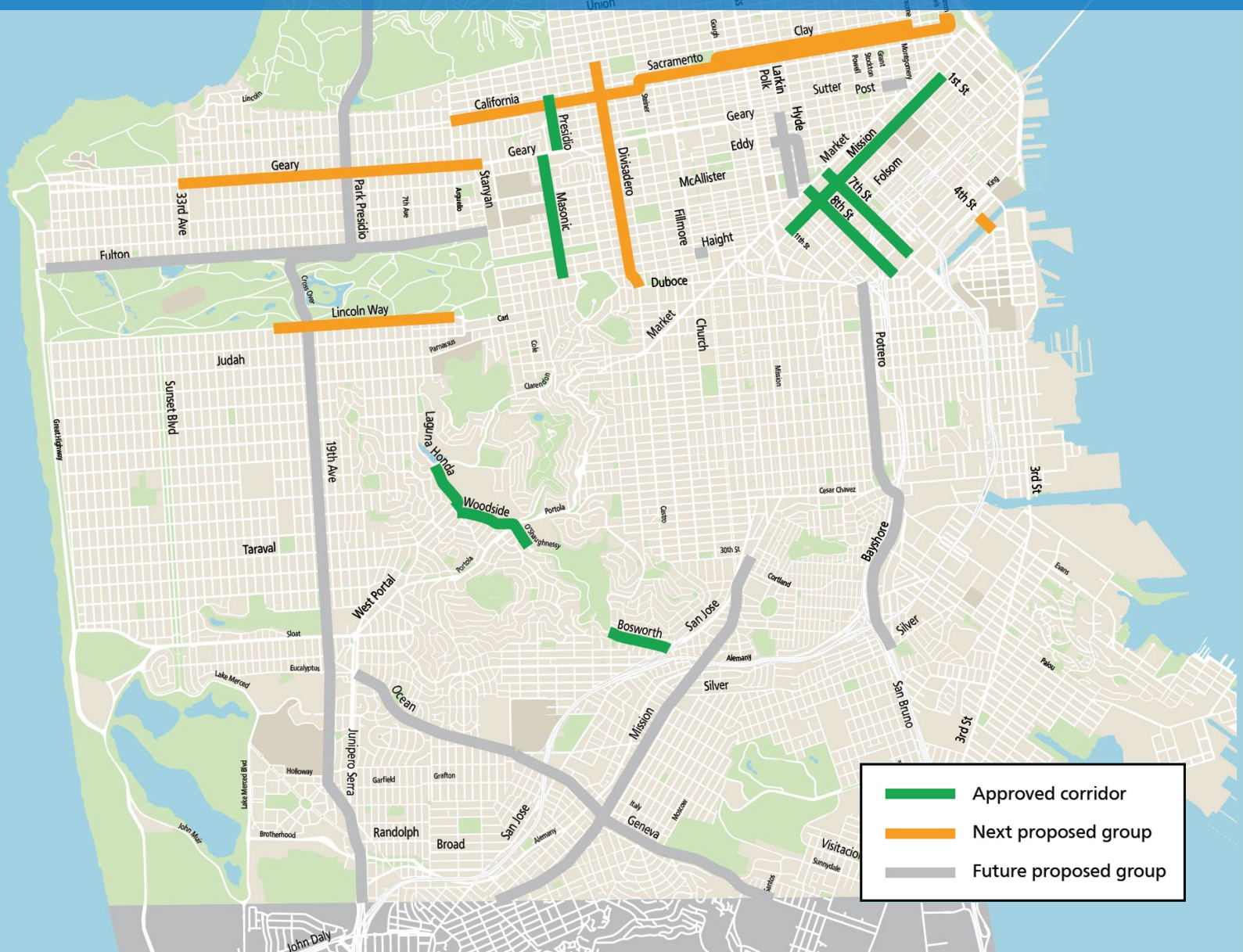
- 10% Savings
- 20% Savings
- >30% Savings

*Time savings represent greatest percent reduction observed in each segment across all directions and times of day (AM or PM Peak).*

# Temporary Emergency Transit Lanes

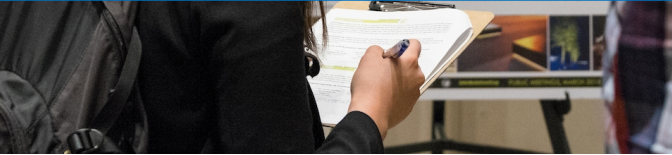


# Potential Emergency Transit Lanes



- Approved corridor
- Next proposed group
- Future proposed group

# Outreach and Evaluation







[SFMTA.com/TempLanes](https://www.sfmta.com/TempLanes)

TellMuni@sfmta.com



SFMTA

# Panhandle Social Distancing & Safety Project

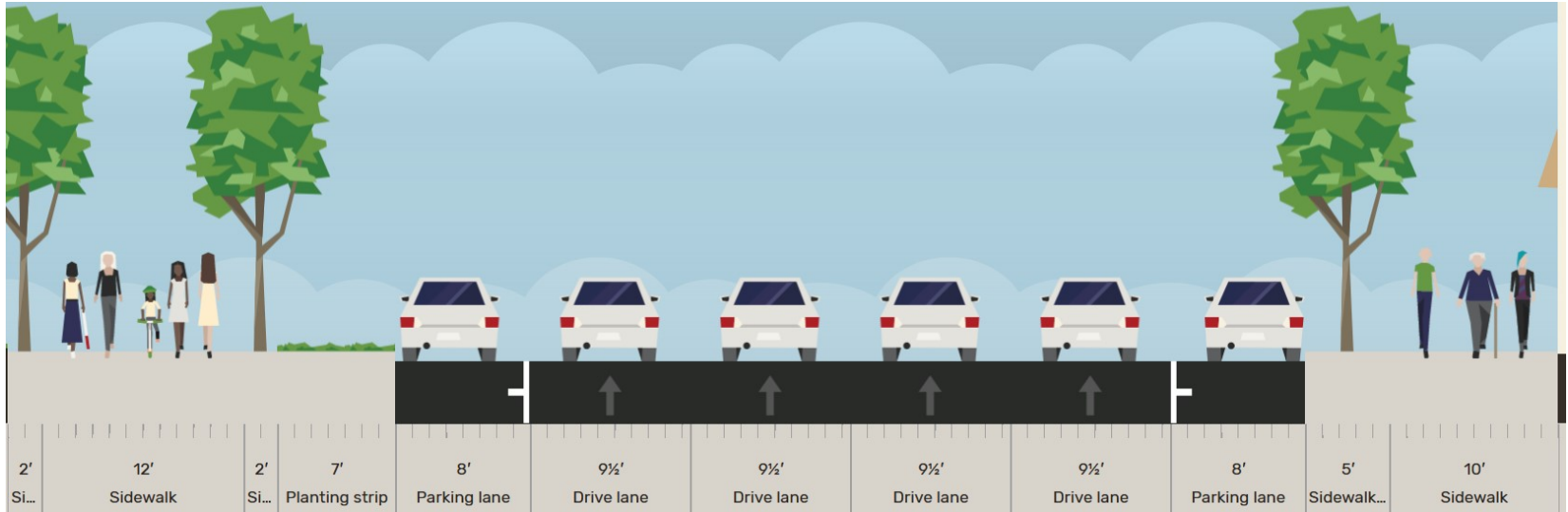
Elizabeth Chen, SFMTA



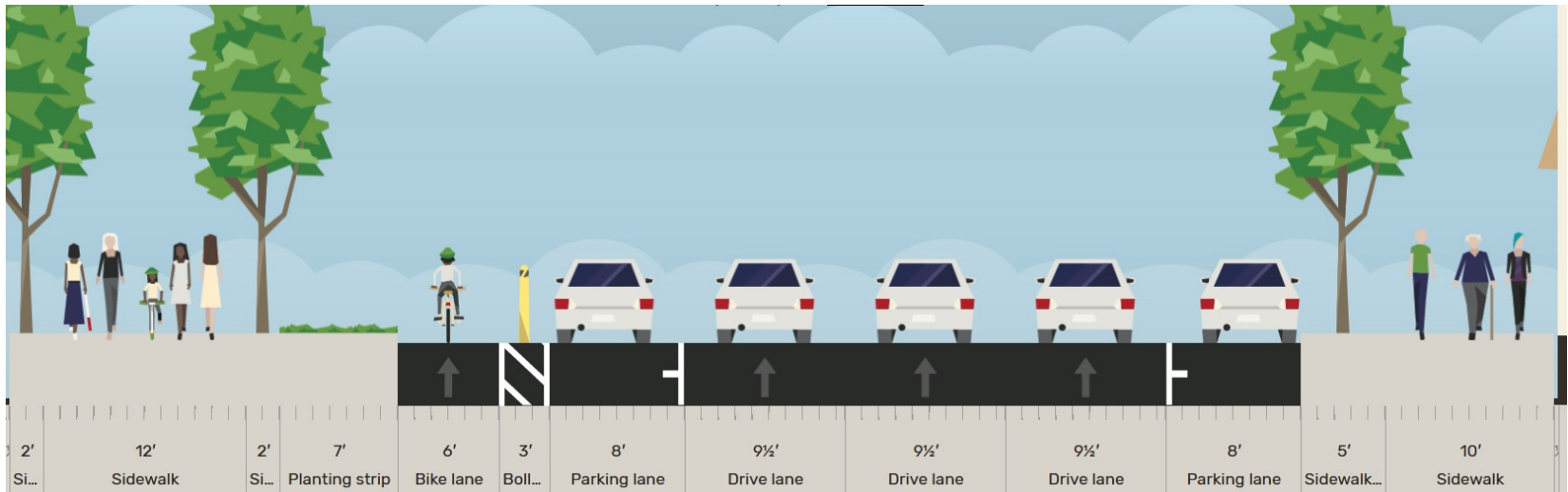
Panhandle Path

- Reduce overcrowding for physical distancing purposes
- Provide alternate bikeway
- Use removeable elements

## Fell Street Before



## Fell Street After



# Public & Stakeholder Engagement

- Residents
  - District 5 Community Meeting
  - Project Website
- Inter-departmental review through EOC/CCC
  - SFFD field review
  - Comprehensive Evaluation and Monitoring Plan



Thank you!

[www.sfmta.com/PanhandleSafety](http://www.sfmta.com/PanhandleSafety)



SFMTA

# COVID-19 Emergency Temporary Street Changes Program

Ian Trout, SFMTA

# What the program is



COVID drive thru testing site



Paramedic vehicle parking



# What the program is



Parking for critical COVID-19 response buildings



1-day street closure for Marin-SF Food Bank

# What the program is



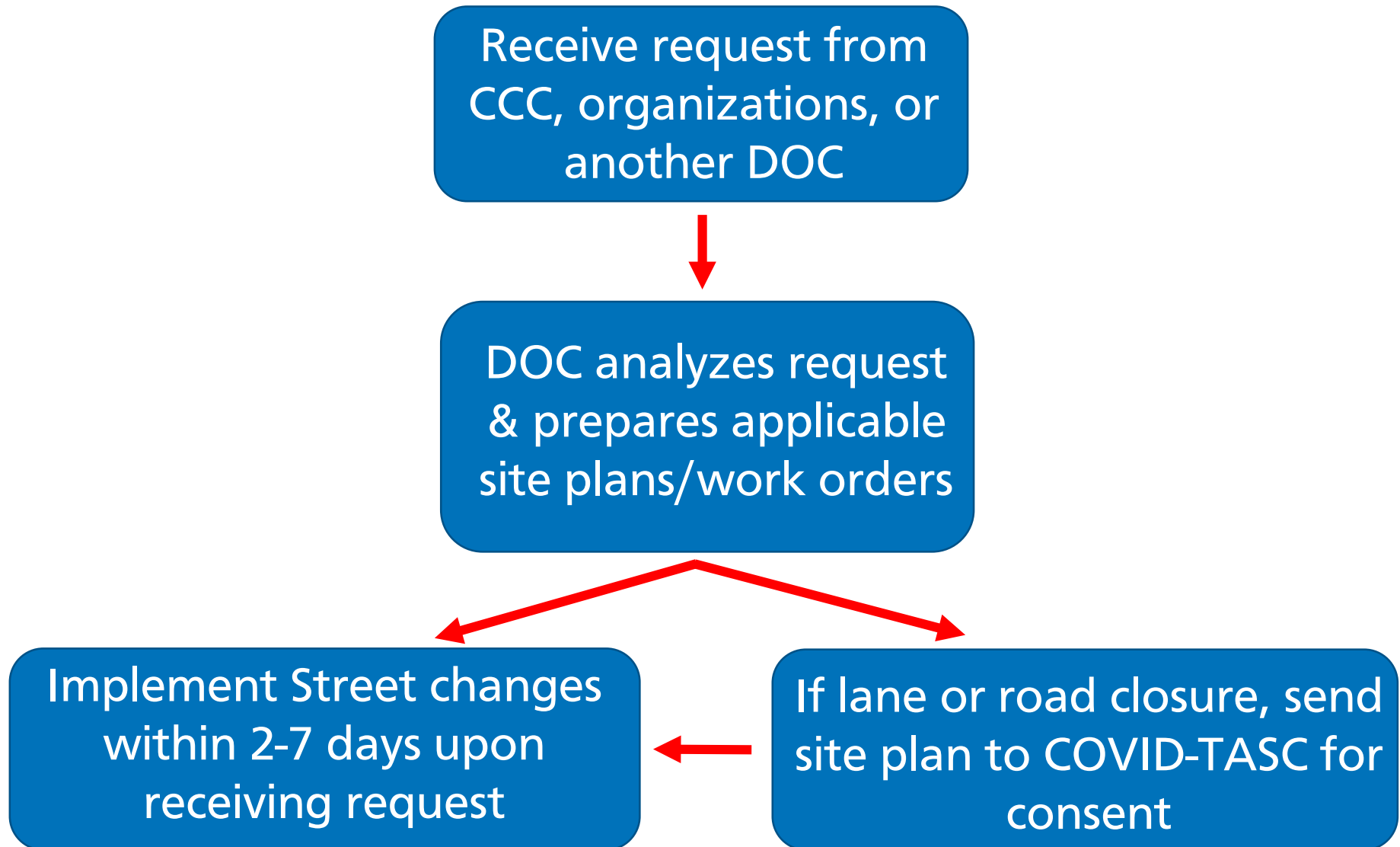
24/7 full or partial street closure to accommodate Meals on Wheels or security surrounding COVID testing sites and other critical COVID-19 response buildings

# What the program is



Closure of the parking lane or daytime street closure to congregate or queue for essential services and provide physical space in a dense SF neighborhood

# Program Process





Ian Trout

[ian.trout@sfmta.com](mailto:ian.trout@sfmta.com)

Office Phone: 415.701.4556



SFMTA

# Slow Streets Phase 3

Shannon Hake, SFMTA



# Slow Streets Phase 3

- 14 Slow Streets Corridors
- MTA Board Approval July 21
- CEQA Categorical & Statutory Exemptions







<http://sfmta.com/slowstreets>

[slowstreets@sfmta.com](mailto:slowstreets@sfmta.com)



SFMTA

## CEQA Appeal - Project Sponsor Responses

1. Emergency Temporary Transit Lanes
2. Panhandle Social Distancing & Safety Project
3. COVID Temporary Street Changes
4. Slow Streets Phase 3

Board of Supervisors

September 29, 2020