



***San Francisco Fire  
Department  
&  
Pacific Gas & Electric***





# San Francisco Fire Department

**Joanne Hayes-White**

**Fire Chief**

**Mark Gonzales**

**Deputy Chief**

**Jack Cremen**

**Battalion Chief**

**PG&E Liaison**

## Pacific Gas & Electric

**Barry Anderson**

**Vice President**

**John Higgins**

**Vice President**

**Frank Fraone**

**Public Safety Specialist Gas**

**Scott Holmquist**

**Public Safety Specialist Elect**



# Recent History

Past three years we have been working constantly with PG&E in training and education

- Training
- Education





# Equipment and Communications

- CGI (Combined Gas Indicator)
- Ipads / Mapping
- Carbon Dioxide CO2 Trailer Unit
- Unified Incident Command System
- Mutualink and Field 2 Base





# Questions & Concerns

In what circumstances does the SFFD respond to PG&E incidents/calls?

- Wires Down
- Gas Odor
- Underground Vault Fires
- Substation Incidents - Fires



# Questions & Concerns

What does our level of response entail?

- Single Engine
- Engine, Truck & Battalion Chief
- Code MuRRI (Multi Unit Response Resource Incident)
- Hazardous Materials Unit, Battalion 2, CO2 Unit, Rescue Squad & Division Chief
- The Incident Commander will assess the incident and call for additional resources as needed



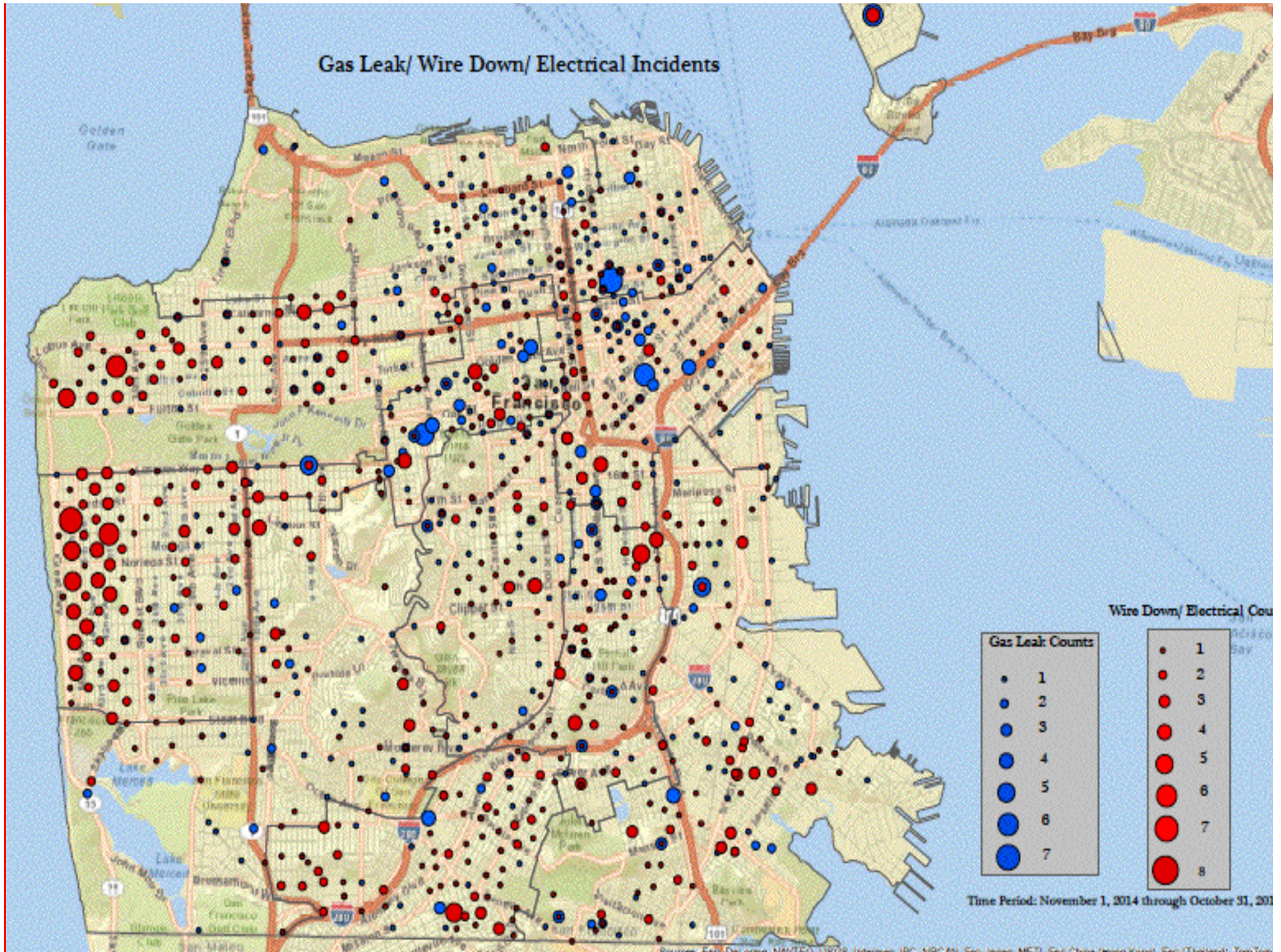
# Questions & Concerns

How many explosions / Calls have occurred in the past year, locations and patterns established?

- 1476 Gas & Electric related Calls
- Aprox. 131,000 SFFD Total Incident responses
- Approximately 1.1% are Gas & Electric related.
- There were 40 vault related fires over the past five years 2014-2015, four each year.
- The only noted patterns occurred along the coastal District 4 area from electrical incidents



# Gas Leak/ Wire Down/ Electrical Incidents

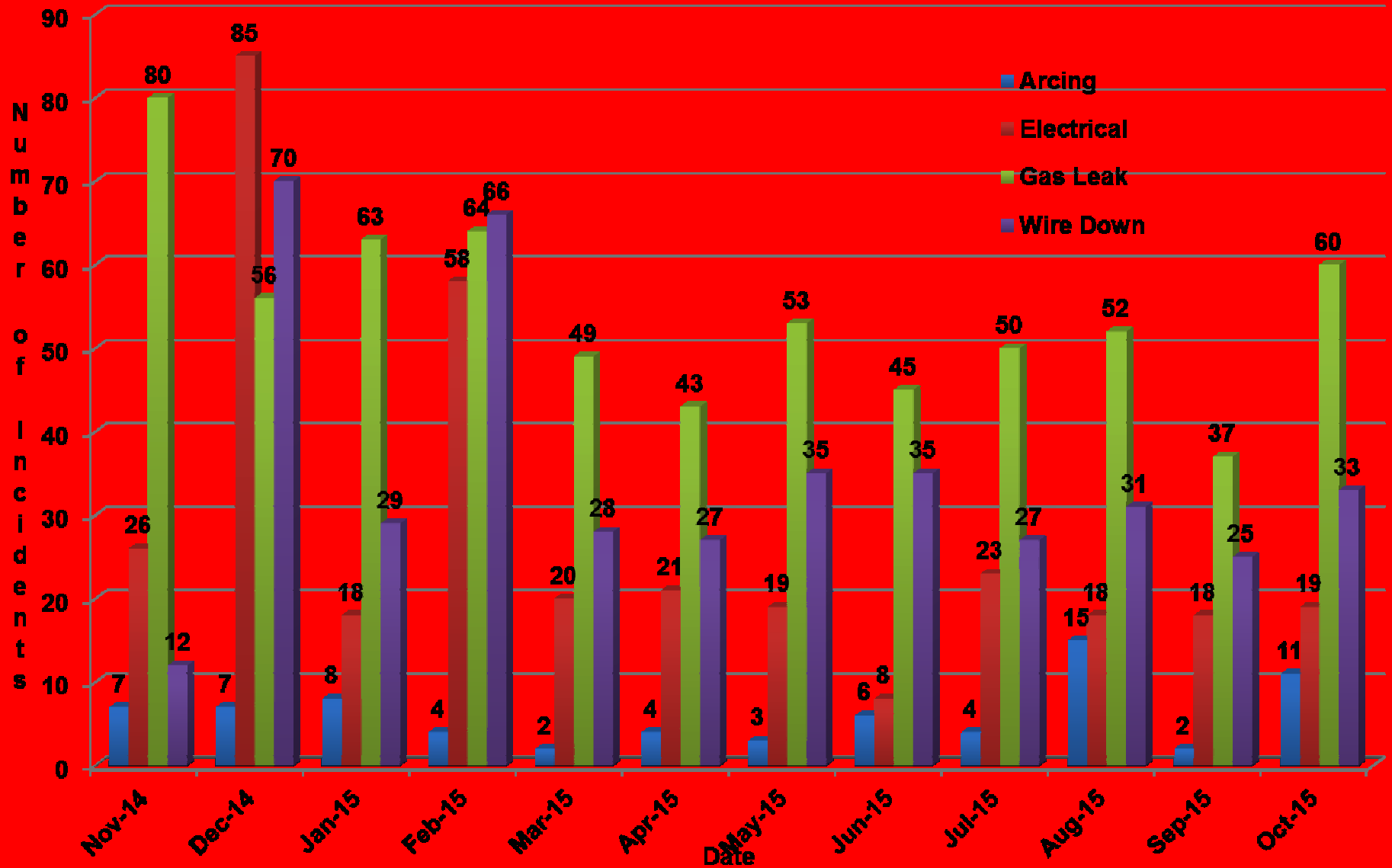


Time Period: November 1, 2014 through October 31, 2015



# Nov 2014 to Nov 2015

## Events







# Questions & Concerns

Are there any safety precautions that the SFFD recommends residents take before or after an explosion.

- Call 911
- NERT Training Est 1990 26,600 trained
- NERT PG&E Gas & Electric Safety Training
  - Gas shut off procedures
  - Individual Units Shut
  - Main Shut Off
  - Electrical Emergencies
  - Isolate, Contain, Deny Entry, Secure the area
  - 811 Dial before you dig





# Planned Training

- Quarterly Sub-Station Training
- Academy Training
- NERT Training
- Table Top Exercise
- PG&E EOC Training & Use



***Thank You***

***Battalion Chief Jack Cremen***

***john.cremen @ sfgov.org***

***415-558-3211***