

Presented in Committee
July 26, 2017

Skilled Nursing Facilities

San Francisco Overview



San Francisco Department of Public Health
Office of Policy & Planning

July 26th, 2017

CPMC St. Luke's Skilled Nursing Unit

- CPMC St. Luke's Skilled Nursing Unit is expected to close in October 2017. This closure will:
 - 1) Decrease the total number of skilled nursing beds in San Francisco by 79 (39 skilled nursing and 40 subacute skilled nursing)
 - 2) Eliminate all subacute beds in San Francisco
- This reduction of hospital-based skilled nursing beds is likely to create a capacity challenge in San Francisco and is reflective of an industry-wide trend
- The Health Commission will hold two Proposition Q hearings in August and September to determine the impact of closure

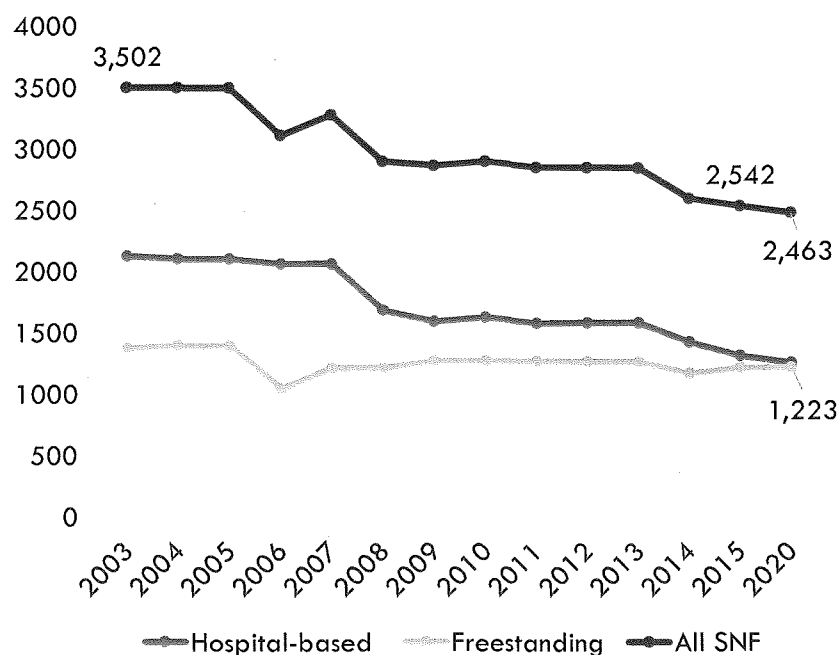
Skilled Nursing Facility Services

CATEGORY	CHARACTERISTIC	TYPE OF SKILLED NURSING CARE	
		GENERAL	SUBACUTE*
CAPACITY	Licensed beds in San Francisco	2,502	40
SUPERVISION	24/7	√	√
SERVICES	Physical therapy, occupational therapy, speech therapy	√	√
	Wound care, intravenous therapy, injections, monitoring of vital signs	√	√
	Assistance with bathing, eating, dressing, feeding, transferring, toilet hygiene	√	√
	Ventilator care, complex wound management, intravenous tube feeding		√

**Subacute patients are medically fragile and require more intensive care*

Declining Skilled Nursing Bed Capacity

Licensed Skilled Nursing Beds in San Francisco, 2003-2020



- *Nationally, the number of hospital-based skilled nursing beds has fallen by 63% from 1999 to 2013*
- *With a static bed supply, San Francisco's total skilled nursing bed rate would decrease from 21 to 12 beds per 1,000 adults 65+ by 2030*

Skilled Nursing Beds at CPMC

With this closure, skilled nursing beds across all CPMC hospitals have declined by 83% since 2013

Campus	Licensed Skilled Nursing Beds		
	2013	2014	2017
<u>California</u>	101	0	0
<u>Davies</u>	38	38	38
<u>Pacific</u>	0	0	0
<u>St. Luke's</u>	79 (40 subacute)	79 (40 subacute)	0
TOTAL	218	117	38

Subacute Care Facilities in California

Across the state:

- *11% of subacute beds (523) are located in the Bay Area*
- *36% of subacute beds are in hospitals*

County	Number of Beds	Number of Facilities
Los Angeles	2,193	56
Orange	532	16
San Diego	423	11
San Bernardino	384	8
Santa Clara	223	5
Alameda	149	5
Riverside	139	4
Ventura	114	3
Fresno	83	2
San Joaquin	72	2
Tulare	67	2
Contra Costa	58	2
Sacramento	52	2
Kern	51	1
San Mateo	44	1
Yolo	44	1
San Francisco*	40	1
Monterey	32	1
Sonoma	17	1
Glenn	10	1
TOTAL	4,727	125

** Estimated closure date October 2017*

CPMC Development Agreement

- The Development Agreement:
 - is silent on the provision of skilled nursing beds by CPMC
 - required CPMC to work with DPH and other hospitals to develop proposals for providing subacute services
- In 2016, DPH, hospitals, and community providers completed the Post-Acute Care Project Report putting forth short- and long-term recommendations, including:
 - Create a citywide **Post-Acute Care Collaborative**
 - Explore new incentives and funding options to **address current gaps** in facility-based care and **bring new skilled nursing facility and subacute providers into the market**
 - Explore **public-private partnerships** to support alternative post-acute care settings
 - Identify a process for delivering **real-time post-acute care information**

Citywide Post-Acute Care Collaborative

- As recommended in the Post-Acute Care Project Report, the San Francisco Section of the Hospital Council of Northern and Central California **launched the Post-Acute Care Collaborative (PACC)** in March of 2017
- The Collaborative includes key leaders from private non-profit hospitals, DPH, Department of Aging and Adult Services, the Jewish Home, and others
- The mission of the Collaborative is to develop solutions that **improve the accessibility and availability of post-acute care for low-income and vulnerable populations**
- The Collaborative is meeting through the end of the year and will release a report later this fall

Summary

- A reduction in hospital-based skilled nursing beds **strains the remaining supply of beds** in San Francisco, but is reflective of a nationwide trend
- San Franciscans needing **subacute care** will need to be placed **out of county**
- Access to skilled nursing care, including subacute care, is a **citywide and regional challenge**
- DPH has initiated **regional discussions** and the Post-Acute Care Collaborative will work on **citywide recommendations**
- The Health Commission's **Proposition Q** hearings will be on **8/15 and 9/5**



Skilled Nursing Facilities

San Francisco Overview



San Francisco Department of Public Health
Office of Policy & Planning

July 26th, 2017

CPMC St. Luke's Skilled Nursing Unit

- CPMC St. Luke's Skilled Nursing Unit is expected to close in October 2017. This closure will:
 - 1) Decrease the total number of skilled nursing beds in San Francisco by 79 (39 skilled nursing and 40 subacute skilled nursing)
 - 2) Eliminate all subacute beds in San Francisco
- This reduction of hospital-based skilled nursing beds is likely to create a capacity challenge in San Francisco and is reflective of an industry-wide trend
- The Health Commission will hold two Proposition Q hearings in August and September to determine the impact of closure

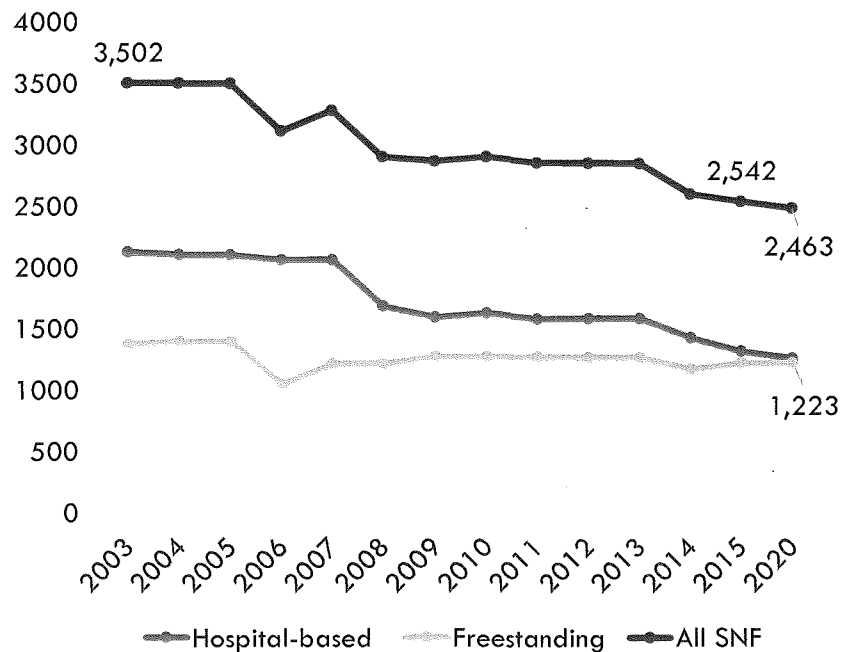
Skilled Nursing Facility Services

CATEGORY	CHARACTERISTIC	TYPE OF SKILLED NURSING CARE	
		GENERAL	SUBACUTE*
CAPACITY	Licensed beds in San Francisco	2,502	40
SUPERVISION	24/7	√	√
SERVICES	Physical therapy, occupational therapy, speech therapy	√	√
	Wound care, intravenous therapy, injections, monitoring of vital signs	√	√
	Assistance with bathing, eating, dressing, feeding, transferring, toilet hygiene	√	√
	Ventilator care, complex wound management, intravenous tube feeding		√

**Subacute patients are medically fragile and require more intensive care*

Declining Skilled Nursing Bed Capacity

Licensed Skilled Nursing Beds in San Francisco, 2003-2020



- *Nationally, the number of hospital-based skilled nursing beds has fallen by 63% from 1999 to 2013*
- *With a static bed supply, San Francisco's total skilled nursing bed rate would decrease from 21 to 12 beds per 1,000 adults 65+ by 2030*

Skilled Nursing Beds at CPMC

With this closure, skilled nursing beds across all CPMC hospitals have declined by 83% since 2013

Campus	Licensed Skilled Nursing Beds		
	2013	2014	2017
<u>California</u>	101	0	0
<u>Davies</u>	38	38	38
<u>Pacific</u>	0	0	0
<u>St. Luke's</u>	79 (40 subacute)	79 (40 subacute)	0
TOTAL	218	117	38

Subacute Care Facilities in California

Across the state:

- *11% of subacute beds (523) are located in the Bay Area*
- *36% of subacute beds are in hospitals*

County	Number of Beds	Number of Facilities
Los Angeles	2,193	56
Orange	532	16
San Diego	423	11
San Bernardino	384	8
Santa Clara	223	5
Alameda	149	5
Riverside	139	4
Ventura	114	3
Fresno	83	2
San Joaquin	72	2
Tulare	67	2
Contra Costa	58	2
Sacramento	52	2
Kern	51	1
San Mateo	44	1
Yolo	44	1
San Francisco*	40	1
Monterey	32	1
Sonoma	17	1
Glenn	10	1
TOTAL	4,727	125

** Estimated closure date October 2017*

CPMC Development Agreement

- The Development Agreement:
 - is silent on the provision of skilled nursing beds by CPMC
 - required CPMC to work with DPH and other hospitals to develop proposals for providing subacute services
- In 2016, DPH, hospitals, and community providers completed the Post-Acute Care Project Report putting forth short- and long-term recommendations, including:
 - Create a citywide **Post-Acute Care Collaborative**
 - Explore new incentives and funding options to **address current gaps** in facility-based care and **bring new skilled nursing facility and subacute providers into the market**
 - Explore **public-private partnerships** to support alternative post-acute care settings
 - Identify a process for delivering **real-time post-acute care information**

Citywide Post-Acute Care Collaborative

- As recommended in the Post-Acute Care Project Report, the San Francisco Section of the Hospital Council of Northern and Central California launched the **Post-Acute Care Collaborative (PACC)** in March of 2017
- The Collaborative includes key leaders from private non-profit hospitals, DPH, Department of Aging and Adult Services, the Jewish Home, and others
- The mission of the Collaborative is to develop solutions that **improve the accessibility and availability of post-acute care for low-income and vulnerable populations**
- The Collaborative is meeting through the end of the year and will release a report later this fall

Summary

- A reduction in hospital-based skilled nursing beds **strains the remaining supply of beds** in San Francisco, but is reflective of a nationwide trend
- San Franciscans needing **subacute care** will need to be placed **out of county**
- Access to skilled nursing care, including subacute care, is a **citywide and regional challenge**
- DPH has initiated **regional discussions** and the Post-Acute Care Collaborative will work on **citywide recommendations**
- The Health Commission's **Proposition Q** hearings will be on **8/15 and 9/5**