

# ODC School and Rhythm & Motion

Your first dance class is \$14!  
Tu primera clase cuesta sólo \$14!



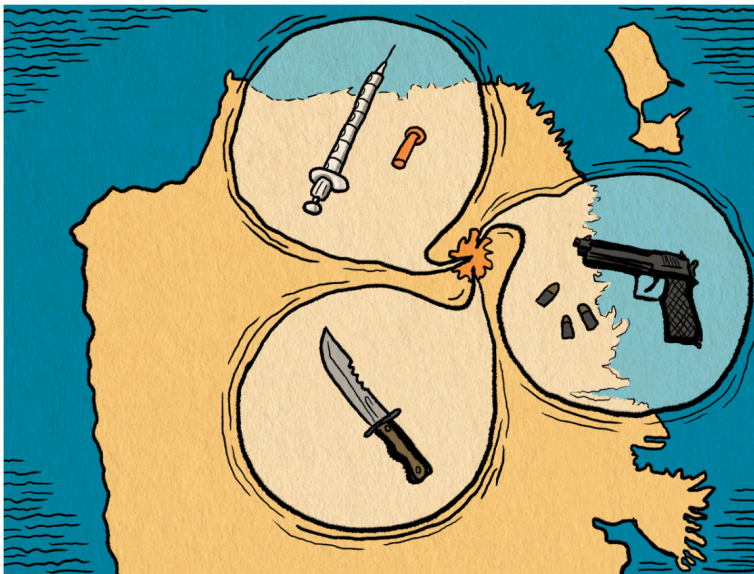
GOVERNMENT

## Has San Francisco made West SoMa into a crime containment zone?

Police respond to most urgent emergencies quickly in SoMa, but take far longer for lower-priority calls residents say shape daily life



by SARAH HOPKINS  
April 23, 2026, 5:00 am



Residents and business owners describe West SoMa as a "containment zone" for the city's ills. Illustration by Neil G. Ballard

Issac Molina starts his shifts as an outreach worker in the South of Market knowing that, at any moment, someone might pull a knife, flash a gun or threaten him with assault.

Molina is not a police officer. He carries no civic authority. When an interaction on the street turns violent, or seems like it might be about to, all he can do is step back, try to talk people down, and call for help.

"This job is not for the weak," he said.

For the last five months, Molina has patrolled the blocks around Russ, Minna and Natoma streets in SoMa's western corridor as part of a private team hired by the SoMa West Community Benefit District.

The group is a collection of property owners who have levied an extra tax on property in their part of SoMa in order to pay for the kind of street-level security that neighborhood residents and business owners claim the city is failing to provide in one of the poorest areas of San Francisco.



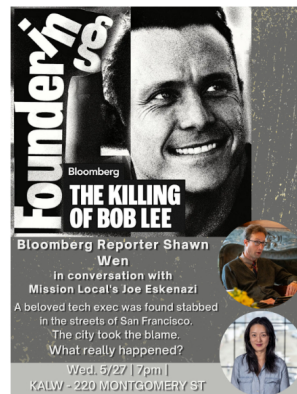
Sign up for Mission Local's daily newsletter: The latest San Francisco news in your inbox, no more than once a day, for free.

Email address

Sign up



Molina's job is to keep sidewalks clear of people sitting or lying down on the pavement. If he sees people using drugs in the open, he tells them to move along. He can do that work better than most, he said, because he has lived some version of their lives himself.



Molina was homeless, incarcerated, and then went back to living on the streets, with few options for work or shelter. That history helps him to relate to people in crisis, he said, and motivates him to draw on his deescalation skills instead of reacting with aggression or anger.

"We can't allow people to harm us, or anyone else," he said.

West SoMa locals say the private patrols capture a broader truth about the neighborhood.

More than a dozen residents and business owners told *Mission Local* that the area has come to feel like a "containment zone;" a handful of blocks where the city's hardest street problems seem concentrated, and law enforcement feels absent.

The area seems increasingly abandoned by city officials, they say. It is left to deal with drug use, assaults and theft that, they feel, aren't tolerated in other neighborhoods.



Police data shows one reason why. When it comes to lower-priority calls that shape daily life in the neighborhood, like drug use, noise or situations that hold the potential for physical harm, local police are slow to respond – much slower than they react to reports of similar crimes citywide.

Data from December 2025 to March 2026 shows that San Francisco police officers get to the most urgent emergencies in SoMa relatively quickly. The less-urgent calls, though, are a different story.

- For Priority A calls, the most urgent incidents involving immediate danger to life or property, police responded to calls in SoMa about **8 percent faster** than the citywide median, at a **median of 7.51 minutes**, compared with 8.08 minutes citywide.
- But for Priority B calls – situations involving potential harm, a suspect who may still be nearby or a recently committed crime – police responded to calls in SoMa about **55**

percent slower than the citywide median, at a median of almost 40 minutes.

- For Priority C calls, lower-urgency incidents with no present danger and no suspect in the area, police took around 53 percent longer to respond than the citywide median, at a median of an hour and 54 minutes.

### SFPD is 8% faster than average on SoMa's most urgent calls, but 50% slower on rest

Median response time measured in minutes.

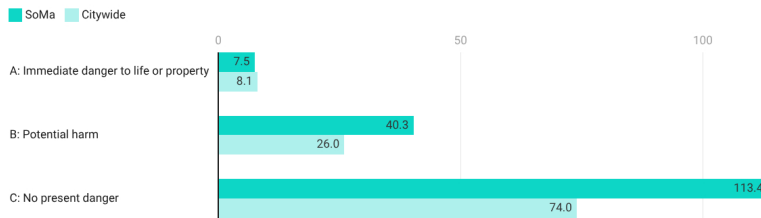


Chart: Iryna Humenyuk · Source: San Francisco Police Department · Created with Datawrapper

When asked about this discrepancy, District 6 Supervisor Matt Dorsey said SoMa residents are not wrong to wonder about the delays. When asked what he thought of residents' concerns that SoMa has become a "containment zone," Dorsey responded, "I think they're right."

The San Francisco Police Department, for its part, disagreed.

"The accusation that West SoMa is a 'containment zone' for crime and disorder is unequivocally false," department spokesperson Evan Sernoffsky wrote in an emailed statement. "Crime is illegal everywhere in San Francisco, and our officers are working hard to ensure our streets are clean and safe."



Street conditions have been worsening for years in West SoMa and the Tenderloin, Dorsey continued. He said SoMa's police response-time numbers point to severe understaffing.

"Priority A calls will get 100 percent service," he said. "But what that means is, most of those cops are only doing Priority A calls."

The end result, he said, is that "the lower-level kinds of disorder that can be very disruptive to the neighborhood diminish people's confidence in their government."

The police department has been working to fill a staffing gap of more than 500 officers citywide, Sernoffsky wrote.

"We are always working diligently to improve our response times to all calls while continuing to prioritize violent crimes in progress," Sernoffsky continued. "As SFPD increases staffing across the department, we expect to see shorter responses to A, B and C priority calls at all district stations."





Residents who spoke with *Mission Local* wonder why police delays are so prolonged when SoMa's crime rates have far exceeded those in the rest of San Francisco – more than double the rate in every other neighborhood for all crime categories throughout 2025, according to [police incident data](#).

"We're tired of being number one," said Reese Isbell, another neighborhood association member.

Isbell gave a presentation to that effect to SFPD Chief Derrick Lew and other police staff on April 3 during a neighborhood meeting that turned tense, according to area residents.

"I walked away feeling worse, not better," said Leah Edwards, who lives at Eighth and Folsom streets. "The response we got was, 'Well, all of San Francisco is understaffed, so you're not the only one.' We understand everyone's understaffed. But, relative to everyone being understaffed, we are worse than everybody else."

According to [department figures](#) from a 2025 report, SFPD's Southern Station, which serves SoMa and five other areas, handled 31,955 calls for service and spent 39,189 hours responding to those calls – a ratio that gives officers assigned to the Southern Station one of the heaviest workloads in San Francisco.

A [staffing table](#) shows the Southern Station running about 66 sworn officers short of its recommended level.

### Southern Station fields more calls than any other

Total "calls for service" hours by police station.

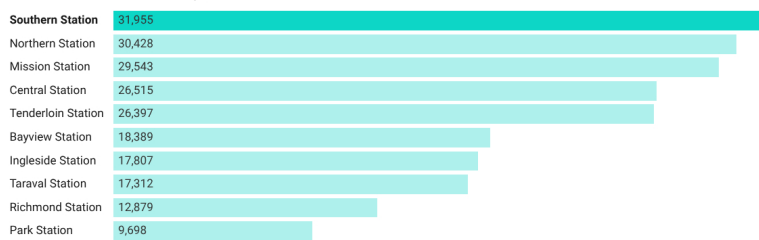


Chart: Iryna Humenyuk · Source: [San Francisco Police Department](#) · Created with [Datawrapper](#)

The largest gap is in Sector Patrol, the officers who are responsible for responding to calls for service from the public. The table lists no foot- or bike-beat officers at all, even though 20 are recommended. In October, *Mission Local* reported that SFPD staffed [less than a third](#) of its foot beats across the city.

The numbers make some residents wonder why one of the city's busiest districts is still missing a basic patrol presence. Available data suggests that some quieter police districts are better-staffed.

A 2025 SFPD staffing report shows that Southern Station was operating at about 78 percent of its recommended sector patrol officer staffing in 2024. Meanwhile, Park was at about 98 percent, the Tenderloin at 101 percent, and Bayview at 112 percent.

### Southern Station falls short of recommended patrol staffing

Count of patrol officers vs. SFPD-recommended levels by station as of 2024.

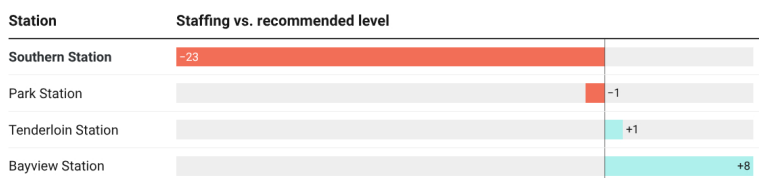


Table: Iryna Humenyuk · Source: [San Francisco Police Department](#) · Created with [Datawrapper](#)

Dorsey said that Southern Station's understaffing appears disproportionate compared to other stations, and said that he wants the police department to explain the disparity.

"What we should not expect to see is that some neighborhoods and some districts are repeatedly worse than others," he said. "What that tells me is that we are failing to allocate resources where they're needed, and doing it again and again."

In an emailed response, Sernoffsky wrote that, in the coming weeks, the police department “will be assigning an additional 11 officers to Southern Station, who will focus primarily on the SoMa Neighborhood,” beginning their new roles in early May.

The department “will continue to add staff to the station in the following months,” as it rolls out new station [boundaries](#).

Dr. Jack Sinow, an optometrist who has run his practice in West SoMa for 52 years, remembers when city police had a foot patrol in the neighborhood. It made a difference.

“They would come down to Sixth Street often and walk around, and come into the offices and say hello,” he said. “You don’t see that anymore.”

The police service delays, meanwhile, have led some neighborhood residents to invest in their own private patrols.

“We’ve had private security in place since October 2024,” said Alex Ludlum, a former city [commissioner](#) and executive director of the SoMa West Community Benefit District, an organization that took in [\\$5.8 million](#) in revenue in 2025. “It’s obvious the police don’t care to enforce the law in our area.”

“It’s a designated containment zone, plainly,” Ludlum continued. “The city has a policy of containing its ills in the Tenderloin and SoMa. That’s consistent across supervisors.”

Ludlum said that the community benefit district recruits security staff from [United Playaz](#), a SoMa-based nonprofit that provides after-school programs for local youth and reentry services.

Outreach workers, like Molina, must call the police if they see crime occurring in the neighborhood, or ask people to leave the neighborhood if they are caught using drugs on the street, Ludlum said. It’s a tough job, he acknowledged.

Molina agreed.

“People pull out guns and knives on us, or try to engage in physical combat, or approach us in a disrespectful manner,” he said. “People get shot, stabbed here every day over simple, petty issues. It’s getting worse out here. It’s a must that groups like ours are out here trying to make a difference.”

Supervisor Dorsey’s office plans to hold a public hearing on police staffing in the Southern District in May.

The goal, said Dorsey, is to get “visibility on what is going on and why this problem has been persistent.” He said he wants the police department to provide a clearer plan for how Southern Station will be staffed, and how resources will be deployed.

Until something changes, Molina said, he and his colleagues will keep trying to maintain a sense of order on blocks where residents say the city has fallen short.

“I want people to give us an understanding that we’re trying to do the best we can with what we have,” he said.





### This May we have a \$50K match!

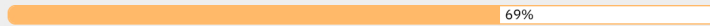
Mission Local has been growing its local coverage: We're **designating reporters to five neighborhoods** – the Tenderloin, Richmond, Sunset, Bayview, and the Mission to provide free, first-rate neighborhood reporting.

Having reporters on-the-ground, asking questions is what makes *Mission Local* stand out – it's our biggest strength, and we intend to bring that to every neighborhood we cover.

Our goal this May is to raise \$125,000 – the price of **adding a reporter to one neighborhood for one year**. If you donate to our fundraiser today, your gift is **doubled** thanks to the match.

**\$86,838 raised**

\$125,000 goal



287 donors

**Put a reporter on your block!**

#### LATEST NEWS



**California advances \$12 billion bond for science research in rebuke to Trump cuts**



**How would Chakrabarti, Chan or Wiener turn big talk into big deeds?**



**Video: ICE agents arrest man in San Francisco outside Sunnyside home**

#### Follow Us



TAGGED: [crime](#) [police](#) [SoMa](#)

#### Join the Conversation

13 Comments



**Nasturtium Lover**

April 23, 2026, 9:06 am at 9:06 am

I wonder what response times are in Lurie's neighborhood. Incredible to me that his PD has such an uneven staffing model vs need

+4 0 votes. Sign in to vote

Reply



**Ivan van Ogre**

April 24, 2026, 3:42 pm at 3:42 pm

The rich and important people matter. The rest of us? Not so much...

0 0 votes. Sign in to vote

Reply



## Lower polk has you beat , drug containment zone for over 15 years Still out of control

April 23, 2026, 5:52 pm at 5:52 pm

Join the club

Come visit lower polk larkin and the alleyways

We have been waiting for 15 years for help

30,000 plus calls to police and 311 for just two alleyways off of polk

District 5 Drug camps For years

Talk about a containment zone

+3 0 votes. Sign in to vote

Reply



**marcos**

April 23, 2026, 10:10 am at 10:10 am

"The accusation that West SoMa is a 'containment zone' for crime and disorder is unequivocally false," department spokesperson Evan Sernoffsky wrote in an emailed statement. "Crime is illegal everywhere in San Francisco and our officers are working hard to ensure our streets are clean and safe."

This right here is copaganda testilying. There is a containment zone that runs from the TL though Western SOMA to Showplace to the North Mission, SFPD enforces it according to political demands from the Mayor.

A former SFPD Mission Station Captain said that the SFPD Tenderloin Station had been directing fentanyl addicts to 16th and Mission and that she and the D9 supervisor, Fielder, were okay with it.

Is Sernoffsky having Dorseyesque a relapse here?

+2 0 votes. Sign in to vote

Reply



**Ivan van Ogre**

April 24, 2026, 3:39 pm at 3:39 pm

The police will NOT show up for noise complaints. Ever.

If you have a homeless problem outside your residence it better be a BIG encampment with a scary dog or they will not bother with it.

If someone breaks into your car, too bad, talk to the computer about it.

The excuses for not showing up change with the societal weather.

+2 0 votes. Sign in to vote

Reply



**Robert B. Livingston**

April 23, 2026, 9:31 am at 9:31 am

San Francisco's most serious crimes do not originate on the sidewalks of its most brutish and neglected neighborhoods.

Rather, they occur far removed from public sight and scrutiny, within some of its toniest mansions and skyscraper boardrooms.

The criminals behind them operate brazenly from meticulously well-appointed locations, redoubts that are fortified and heavily guarded by every conceivable power and convenience: including provisions for instant

access to the ears of our most powerful politicians.

What is truly astounding is that so few of these criminals connect their crimes to the victims who litter the world's battlefields, and fill its slums, prisons, and sweatshops.

What do we call these criminals, who typically commit their crimes by manipulating digital ones and zeros?

"Billionaires?" "Oligarchs?"

What metrics do we need to learn if we would truly commit ourselves to making San Francisco the jewel of civilization it deserves to be?

Local and world events are increasingly justifying Karl Marx's insight that capitalism does not produce harmonious progress.

Rather, it produces "misery, agony of toil, slavery, ignorance, brutality, moral degradation" at one pole of society while it produces colossal wealth for a minority at its opposite pole.

+3 -2 votes. Sign in to vote

Reply



**marcos**

April 24, 2026, 12:50 am at 12:50 am

We don't need to unravel capitalism in order for the City's problems to not be contained in a handful of inevitably low income neighborhoods of color that are already oversubscribed with homeless and substance treatment services.

0 0 votes. Sign in to vote

Reply



**Daniel**

April 23, 2026, 5:50 am at 5:50 am

I suppose the PD (and DPW) don't see themselves as concierges for the cluster of SROs and harm reduction hustlers down there.

You get the drugs out of the place you'll see a different neighborhood. Everything else is just moving chairs on the deck.

+2 -2 votes. Sign in to vote

Reply



**Lpe**

April 23, 2026, 6:34 pm at 6:34 pm

Yeah easy just get the drugs out. Are they stupid??

+2 0 votes. Sign in to vote

Reply



**Ivan van Ogre**

April 24, 2026, 3:31 pm at 3:31 pm

"Mission Local reported that SFPD staffed less than a third of its foot beats across the city."

We need intelligent segways on those corners, or at least some good, monitored cameras.

0 0 votes. Sign in to vote

Reply



**Lower polk has you beat , drug containment zone for over 15 years Still out of control**

April 23, 2026, 5:51 pm at 5:51 pm

Join the club

Come visit lower polk larkin and the alleyways

We have been waiting for 15 years for help

30,000 plus calls to police and 311 for just two alleyways off of polk

District 5 Drug camps For years

Talk about a containment zone

0 0 votes. Sign in to vote

Reply



**Gary**

April 23, 2026, 6:35 pm at 6:35 pm

It's the liberal Judges that keep the revolving door open for criminals here in San Francisco!

+2 -3 votes. Sign in to vote

Reply



**JC**

April 23, 2026, 10:04 am at 10:04 am

SomaWest CBD lobbied incessantly to have an additional tax levied; until enough property owners agreed to pay more - for what all SF residents are supposed to already receive through the existing infrastructure. We pay more and still receive less. SFPD Southern Station is at the other end of the district and those of us on the border with Mission Station get the sense that neither station is interested, other than sporadic (and comically delayed) visits to our latest public housing building (yes, another one). Shaun is right...thanks for the trees too Shaun!

0 -1 votes. Sign in to vote

Reply

^ Collapse Comments

## Leave a comment

Please keep your comments short and civil. Do not leave multiple comments under multiple names on one article. We will zap comments that fail to adhere to these short and easy-to-follow rules.

Your email address will not be published. Required fields are marked \*

Comment \*

Name \*

Email \*

Website

Notify me of follow-up comments by email.

Notify me of new posts by email.

**Post Comment**



SUBSCRIBE TO MISSION LOCAL'S DAILY

Mission Local produces enterprise reporting on San Francisco's most critical issues: police reform, corruption, public health, housing and homelessness. Learn more about us, and **donate below keep us reporting.**

One-time

♥ Monthly

100% of your gift goes towards local journalism!

\$250

\$120

\$55

\$30

\$10

\$5

\$ 25

USD ▾

Designate to Mission Local

Donate today!

NEWSLETTER

Email address

Sign up

19 May 2026

Public Safety and Neighborhood Services Committee  
May 28<sup>th</sup> Hearing, re Southern Station Staffing Levels

Dear Committee Chair Dorsey, Vice Chair Sauter, and Supervisor Wong,

We are writing highlight the **urgency of equitable staffing increases for Southern Station**. The [SFPD Boundary Analysis of District Stations Project Report 2024](#), prepared for the police redistricting hearings that concluded at the close of last year, documented comprehensively over the recent decade the highest demand for Priority A calls on Southern, its lower staffing levels relative to other stations, AND noted that the service demands for Moscone Center and our two major events venues were not even calculated in the data. **For 10 years, Southern has been behind its counterparts in staffing and the situation is set to compound as it absorbs the Market St corridor.**

We understand that ALL stations are understaffed. We are not looking for privileged treatment. We are looking for:

- Staffing commensurate with documented workload within the parameters of existing staff numbers, equitably allocated.
- We need clarification on how the Drug Market Agency Coordination Center (DMACC) unit and the Hospitality Task Force which overlap Southern's boundaries are staffed, and assurance that their numbers are not counted as part of Southern's core staffing. These units focus on visiting populations with issues not captured in calls for service and layered on top of resident and commercial needs.
- We need staffing to fill the foot beat positions designated to serve the Embarcadero Navigation Center area per a City-approved MOU. Southern currently relies on volunteers as available, and overtime pay.

Our Southern Station officers—and our succession of Captains--have been doing impressive work and they have our full support. But **what they REALLY need is for high-level SFPD management to supplement their numbers relative to the documented demands and in proportion to all districts.**

Sincerely,

**The South Beach | Rincon | Mission Bay Neighborhood Association Board**

Alice Rogers, President

Gary Pegueros, Vice President/Secretary

Bruce Agid, Director

Sarah Bertram, Director

Sarah Davis, Director

Mike Linksvayer, Director

CC: SFPD Chief Derrick Lew; Deputy Chief Martin; Commander Hurwitz, Captain Hurley

Dear Committee Chair Dorsey, Vice Chair Sauter, and Supervisor Wong,

I am a 24-year owner and resident of 88 King Street and I am writing to highlight the **urgency of equitable staffing increases for Southern Station**. The [SFPD Boundary Analysis of District Stations Project Report 2024](#), prepared for the police redistricting hearings that concluded at the close of last year, documented comprehensively over the recent decade the highest demand for Priority A calls on Southern, its lower staffing levels relative to other stations, AND noted that the service demands for Moscone Center and our two major events venues were not even calculated in the data. **For 10 years, Southern has been behind its counterparts in staffing, and the situation is set to compound as it absorbs the Market Street corridor.**

I understand that ALL stations are understaffed. Our neighborhood is not looking for privileged treatment. We are looking for:

- Staffing commensurate with documented workload within the parameters of existing staff numbers, equitably allocated. Our 10-year staffing deficit needs to be corrected, and then we need additional staffing to cover the added incident load from the addition of the Market St corridor.
- We need clarification on how the Drug Market Agency Coordination Center (DMACC) unit and the Hospitality Task Force which overlap Southern's boundaries are staffed, and assurance that their numbers are not counted as part of Southern's core staffing. These units focus on visiting populations with issues not captured in calls for service and layered on top of resident and commercial needs.
- We need staffing to fill the foot beat positions designated to serve the Embarcadero Navigation Center area per a City-approved MOU. Southern currently relies on volunteers as available, and overtime pay.

Our building has experienced numerous instances of aggressive individuals, apparently homeless, menacing, and in some instances physically attacking residents and staff. Police officers were unable to respond promptly due to lack of personnel and priority of other emergencies. This lack of police response permitted these individuals to leave our property and continue these behaviors elsewhere in South Beach and adjoining neighborhoods. This in turn allows these individuals to feel they can continue and increase such behaviors because there will be no one to stop them. These unaddressed incidents negatively impact the safety of every individual and the viability of local businesses, devalue commercial and private property, and contribute to San Francisco's overall crime and homelessness issues.

Our Southern Station officers—and our succession of Captains--have been doing impressive work and they have my full support. But **what they REALLY need is for high-level SFPD management to supplement their numbers relative to the documented demands and in proportion to all districts.**

Sincerely,

Paul J. Duhamel

Dear Ms. Crayton—

I am a resident of SOMA writing to express my concern regarding the severe understaffing and dangerously slow SFPD response times in our neighborhood. Forcing an already overextended station to absorb this massive increase without adding permanent resources places our neighborhood at serious risk.

We are not asking for special treatment; we are simply asking for equitable public safety.

I urge the Board of Supervisors to require SFPD to prioritize immediate, permanent staffing increases, dedicated foot patrols, and equitable resources for Southern Station to bring our response times in line with the rest of the city, and to meet the needs of the newly expanded district.

Thank you for your time and leadership on this critical issue.

Michael Campos

...ephemerally composed...

Hi Ms Crayton,

I am a resident of SOMA writing to express my concern regarding the severe understaffing and dangerously slow SFPD response times in our neighborhood. Forcing an already overextended station to absorb this massive increase without adding permanent resources places our neighborhood at serious risk.

I urge the Board of Supervisors to require SFPD to prioritize immediate, permanent staffing increases, dedicated foot patrols, and equitable resources for Southern Station to bring response times in line with the rest of the city, and to meet the needs of the newly expanded district.

Kind regards, Evan Hetu (resident at The Palms on 4th and Brannan)

Hello,

I am a resident of SOMA writing to express my concern regarding the severe understaffing and dangerously slow SFPD response times in our neighborhood. Forcing an already overextended station to absorb this massive increase without adding permanent resources places our neighborhood at serious risk.

I urge the Board of Supervisors to require SFPD to prioritize immediate, permanent staffing increases, dedicated foot patrols, and equitable resources for Southern Station to bring response times in line with the rest of the city, and to meet the needs of the newly expanded district.

Sincerely,  
Han Park

I am a SOMA resident writing to express serious concern about the proposed expansion of Southern Station's jurisdiction without the permanent staffing and resources needed to support it.

Southern Station is already overextended. SFPD's own analysis shows that Southern officers are carrying one of the highest call workloads in the city, with approximately 390 community calls per officer, while SOMA response times remain far slower than the citywide median. Priority C calls involving issues such as drug activity, encampments, and street disorder can face waits of nearly two hours.

SOMA and the Tenderloin already carry a disproportionate share of the city's shelter beds, supportive services, overdose impacts, and street-level public safety challenges. The SOMA West petition to the state underscores how much the city has concentrated high-need services in this area without providing the public safety, sanitation, and infrastructure resources needed to manage those impacts.

Expanding Southern Station's jurisdiction without permanent staffing would deepen an existing inequity. Temporary deployments and task forces are not a substitute for baseline staffing, dedicated patrols, and reliable response times.

I urge the Board of Supervisors to require SFPD to provide a concrete plan for Southern Station that includes:

1. Permanent staffing increases tied to SFPD's own recommended staffing levels;
2. Dedicated foot and bike patrols in SOMA and West SOMA;
3. Clear deployment commitments for the expanded district;
4. Public reporting on response times by district and priority level;
5. A timeline for bringing SOMA response times in line with the rest of the city; and
6. A commitment that temporary task forces or special deployments will not be treated as substitutes for baseline staffing at Southern Station.

SOMA has absorbed more than its fair share of citywide responsibilities. We are asking for resources that match the burden placed on our neighborhood.

Dear Committee Chair Dorsey, Vice Chair Sauter, and Supervisor Wong,

I am Patricia Ash, a resident of South Beach and I am writing to highlight the **urgency of equitable staffing increases for Southern Station**. The [SFPD Boundary Analysis of District Stations Project Report 2024](#), prepared for the police redistricting hearings that concluded at the close of last year, documented comprehensively over the recent decade the highest demand for Priority A calls on Southern, its lower staffing levels relative to other stations, AND noted that the service demands for Moscone Center and our two major events venues were not even calculated in the data. **For 10 years, Southern has been behind its counterparts in staffing, and the situation is set to compound as it absorbs the Market St corridor.**

I understand that ALL stations are understaffed. Our neighborhood is not looking for privileged treatment. We are looking for:

- Staffing commensurate with documented workload within the parameters of existing staff numbers, equitably allocated. Our 10-year staffing deficit needs to be corrected, and then we need additional staffing to cover the added incident load from the addition of the Market St corridor.
- We need clarification on how the Drug Market Agency Coordination Center (DMACC) unit and the Hospitality Task Force which overlap Southern's boundaries are staffed, and assurance that their numbers are not counted as part of Southern's core staffing. These units focus on visiting populations with issues not captured in calls for service and layered on top of resident and commercial needs.
- We need staffing to fill the foot beat positions designated to serve the Embarcadero Navigation Center area per a City-approved MOU. Southern currently relies on volunteers as available, and overtime pay.

Our Southern Station officers—and our succession of Captains--have been doing impressive work and they have my full support. But **what they REALLY need is for high-level SFPD management to supplement their numbers relative to the documented demands and in proportion to all districts.**

Sincerely,

Patricia Ash

[patriash@gmail.com](mailto:patriash@gmail.com)

Sent from my iPad  
Pat Ash

Dear Committee Chair Dorsey, Vice Chair Sauter, and Supervisor Wong,

We are Gina and Joe Boggio, homeowners at 200 Brannan Street since 2017, and parents trying to raise a 6 year old in the neighborhood.

I am writing to highlight the **urgency of equitable staffing increases for Southern Station**. The [SFPD Boundary Analysis of District Stations Project Report 2024](#), prepared for the police redistricting hearings that concluded at the close of last year, documented comprehensively over the recent decade the highest demand for Priority A calls on Southern, its lower staffing levels relative to other stations, AND noted that the service demands for Moscone Center and our two major events venues were not even calculated in the data. **For 10 years, Southern has been behind its counterparts in staffing, and the situation is set to compound as it absorbs the Market St corridor.**

We are looking for:

- Staffing commensurate with documented workload within the parameters of existing staff numbers, equitably allocated. Our 10-year staffing deficit needs to be corrected, and then we need additional staffing to cover the added incident load from the addition of the Market St corridor.
- We need clarification on how the Drug Market Agency Coordination Center (DMACC) unit and the Hospitality Task Force which overlap Southern's boundaries are staffed, and assurance that their numbers are not counted as part of Southern's core staffing. These units focus on visiting populations with issues not captured in calls for service and layered on top of resident and commercial needs.
- We need staffing to fill the foot beat positions designated to serve the Embarcadero Navigation Center area per a City-approved MOU. Southern currently relies on volunteers as available, and overtime pay.

**What we REALLY need is for high-level SFPD management to supplement their numbers relative to the documented demands and in proportion to all districts.**

Happy to chat in person,

Gina Boggio

I am a resident of SOMA writing to express my concern regarding the severe understaffing and dangerously slow SFPD response times in our neighborhood. Forcing an already overextended station to absorb this massive increase without adding permanent resources places our neighborhood at serious risk.

We are not asking for special treatment; we are simply asking for equitable public safety. I urge the Board of Supervisors to require SFPD to prioritize immediate, permanent staffing increases, dedicated foot patrols, and equitable resources for Southern Station to bring our response times in line with the rest of the city, and to meet the needs of the newly expanded district.

Thank you for your time and leadership on this critical issue.

Dear Committee Chair Dorsey, Vice Chair Sauter, and Supervisor Wong,

I am Kelso Chan, a resident of 200 Brannan St and I am writing to highlight the **urgency of equitable staffing increases for Southern Station**. The [SFPD Boundary Analysis of District Stations Project Report 2024](#), prepared for the police redistricting hearings that concluded at the close of last year, documented comprehensively over the recent decade the highest demand for Priority A calls on Southern, its lower staffing levels relative to other stations, AND noted that the service demands for Moscone Center and our two major events venues were not even calculated in the data. **For 10 years, Southern has been behind its counterparts in staffing, and the situation is set to compound as it absorbs the Market St corridor.**

I understand that ALL stations are understaffed. Our neighborhood is not looking for privileged treatment. We are looking for:

- Staffing commensurate with documented workload within the parameters of existing staff numbers, equitably allocated. Our 10-year staffing deficit needs to be corrected, and then we need additional staffing to cover the added incident load from the addition of the Market St corridor.
- We need clarification on how the Drug Market Agency Coordination Center (DMACC) unit and the Hospitality Task Force which overlap Southern's boundaries are staffed, and assurance that their numbers are not counted as part of Southern's core staffing. These units focus on visiting populations with issues not captured in calls for service and layered on top of resident and commercial needs.
- We need staffing to fill the foot beat positions designated to serve the Embarcadero Navigation Center area per a City-approved MOU. Southern currently relies on volunteers as available, and overtime pay.

Understaffing directly resulted in the closure of Bayside Market grocery store previously located at 120 Brannan St, after 35 years of operation. The owner explicitly cited rampant crime and unresponsive law enforcement as a key reason for the closure which has negatively impacted all residents in my neighborhood. This was not only a grocery store, but a gathering place for neighbors and an essential resource those who do not or cannot drive, including my elderly mother who used to walk my child to the corner store to run errands and get some sunshine.

I find it hard to find the words to convey the sadness and hopelessness this closure has had on the daily life of residents. While the city celebrates the economic return of San Francisco, what about the rest of us? The AI boom has not resulted in my neighborhood feeling safer or the return of small businesses. Our remaining grocery option, the Safeway at 4th and King, requires intimidating security guards with bullet proof vests to deal with mentally ill people creating havoc in the aisles. My heart races each time shop for groceries there. My neighborhood used to feel like a community where I knew my local shopkeepers. I still live here but am forced to drive elsewhere for daily life. Please help us.

[‘You can only take so much’: South Beach market to close after 35 years, citing crime, costs](#)



'You can only take so much': South Beach market to close after 35 years,...

Maliya Ellis

"Our family business is going down the tubes because the idiots in City Hall can't protect us," co-owner David P...

Our Southern Station officers—and our succession of Captains--have been doing impressive work and they have my full support. But **what they REALLY need is for high-level SFPD management to supplement their numbers relative to the documented demands and in proportion to all districts.**

Sincerely,

Kelso Chan

Dear Supervisors and City Leaders,

My name is Sunita Giri, and together with my sister, Bini, we own and operate [Bini's Kitchen](#) in SOMA. We are writing ahead of Thursday's hearing to express our deep concern regarding the ongoing public safety crisis in our neighborhood and the lack of adequate resources being provided to the Southern Police District.

As small business owners, we witness the realities on our streets every single day. Drug dealing, open drug use, vandalism, theft, aggressive behavior, and unresolved homelessness issues continue to impact our neighborhood, our customers, and our employees. Many small businesses in SOMA are struggling not only because of economic challenges, but also because customers no longer feel safe walking through the area.

We work extremely hard to keep our family business alive, create jobs, pay taxes, and contribute positively to San Francisco. Yet many days it feels like small business owners in SOMA have been left to deal with these problems on our own.

Southern Station officers are already stretched thin, and expanding their jurisdiction without increasing staffing and resources will only worsen an already difficult situation. Slow response times and lack of visible enforcement have allowed conditions in some areas to deteriorate further.

We are not asking for special treatment — we are simply asking for basic public safety, accountability, and support for the communities and businesses trying to survive here.

We respectfully urge the City to:

- Increase staffing and resources for Southern Station
- Address open-air drug dealing and illegal activity more consistently
- Improve response times for non-emergency and quality-of-life issues
- Provide stronger coordination between public safety, homelessness outreach, and mental health services
- Support the small businesses that continue investing in SOMA despite these ongoing challenges

San Francisco cannot recover without safe and thriving neighborhoods. SOMA businesses, residents, workers, and visitors deserve better.

Thank you for your time and consideration.

Sincerely,  
Sunita Giri & Bini Giri  
[Bini's Kitchen](#)  
SOMA, San Francisco

As a resident of the SOMA West neighborhood I am writing to express my concern regarding the severe understaffing and dangerously slow SFPD response times in my neighborhood. Forcing an already overextended station to absorb this massive increase without adding permanent resources places our neighborhood at serious risk.

I am not asking for special treatment; I'm simply asking for equitable public safety. I urge the Board of Supervisors to require SFPD to prioritize immediate, permanent staffing increases, dedicated foot patrols, and equitable resources for Southern Station to bring our response times in line with the rest of the city, and to meet the needs of the newly expanded district.

Thank you for your time and leadership on this critical issue.

William Dice  
8 Brush Place  
San Francisco, CA 94103

Public Safety and Neighborhood Services Committee  
May 28th Hearing, re Southern Station Staffing Levels

My name is Carol Mitchell and I am a resident of South Beach, 1 Federal St., SFC. I'd like to echo friends and neighbors in my area and to request equitable staffing increases for Southern Station, as the other districts in San Francisco.

We appreciate our Southern Station officers and all they do. I would like to see all departments supplemented ratably based on documented workload necessary.

I live one block from the NAV center and a stones throw from the catacombs under the Bryant St. entrance to the Bay Bridge. I'm especially sensitive to the safety of this area and often feel unsafe walking home. I believe there is special provision for foot patrol for this area that is in addition to our districts regular staffing needs.

Please do all you can to make it equitable across districts.

Thank you for reading my email.

Sincerely,  
Carol Mitchell



May 26, 2026

Supervisor Matt Dorsey, Chair  
Supervisor Danny Sauter, Vice Chair  
Supervisor Alan Wong  
Public Safety and Neighborhood Services Committee  
Board of Supervisors  
City Hall, San Francisco, CA 94102

Committee Chair Dorsey,

The SOMA West Neighborhood Association urges the Board to increase staffing and resources for Southern Station. By every metric the City itself publishes — calls for service, calls per officer, response times, population density — Southern is the most under-resourced district in San Francisco relative to its workload. Southern now ranks #1 in nearly every crime category citywide, including violent crime. This jeopardizes Downtown's recovery: Southern covers the City's commercial core, Moscone Center, the museums, the theaters, the hotels, the nightlife.

The 2026 boundary changes are quickly approaching and will fold the most challenging stretches of Market Street into Southern's jurisdiction with no corresponding staffing plan. Southern needs more officers to absorb the new territory — and to close the deficit it already has.

While we have been recently told that Southern has an additional 8 officers, that does not even adequately cover the need for additional support given the current boundaries. With the addition of the incredibly high challenges within the new district lines, it's not equitable to these increased needs further exacerbating the problem of an under-resourced Southern Station.

**1. Southern already carries among the highest workloads in the city.**

SFPD's 2025 Staffing Analysis (pp. 32, 51) shows Southern District patrol officers handled 390 community-generated calls per officer in 2024 — second only to Taraval and nearly double the workload of Park District (206). Despite this, Southern's sector patrol is staffed at only 78% of SFPD's recommended level (82 of 105 recommended officers). The official workload is itself an undercount: the SOMA West Community Benefit District absorbs more than 30,000 additional calls each year that never enter the SFPD dataset because residents and businesses have learned not to call.

**2. Response times are 45%–54% above the citywide median.**

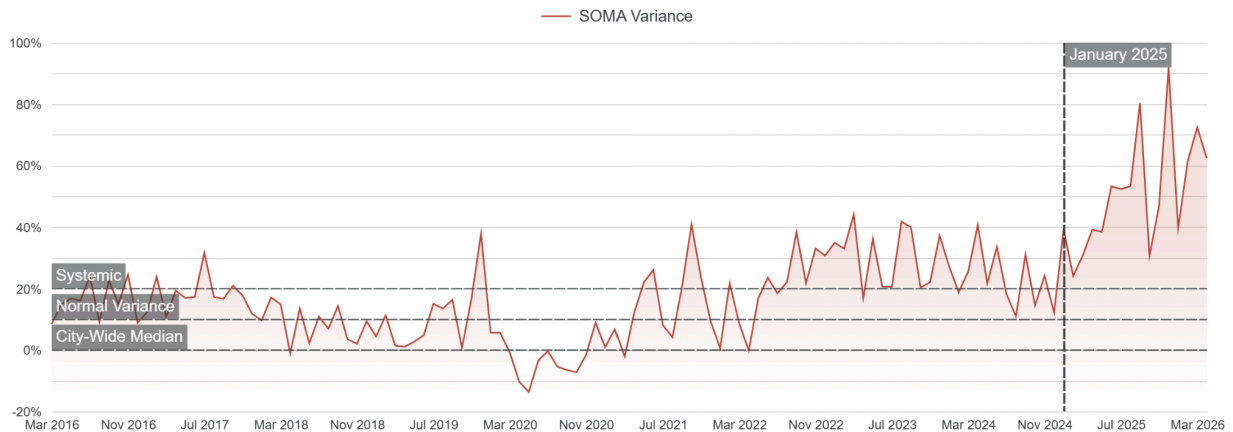
Twelve months of dispatch data (May 2025 – April 2026) show that Southern Station has the slowest non-life-threatening response times in San Francisco outside the Tenderloin:

Neighborhood	Priority A	Priority B	Priority C
<b>Citywide median</b>	8.3 min	27.3 min	77.0 min
<b>South of Market</b>	7.8 min	42.1 min (+54%)	114.9 min (+49%)
<b>Mission Bay</b>	8.1 min	37.0 min (+35%)	138.1 min (+79%)
<b>Southern Station overall</b>	8.2 min	39.6 min (+45%)	113.1 min (+47%)

These are not anomalies — they are sustained 12-month patterns. In Southern Station, 56% of Priority C calls are marked “Gone on Arrival” and 16% are categorized as “Unserviced,” meaning no officer ever responds.

**Furthermore, response time disparity relative to the Citywide median is getting worse, not BETTER.** As shown in the chart below, the response times for Priority B calls in SOMA have been getting longer relative to the City average since the start of 2025.

Prio B: City-Wide Baseline Median Response vs. SOMA (% delay)



**3. The August 2026 boundary expansion will compound, not relieve, the gap.**

The boundary changes taking effect August 2026 will fold the entire 6th Street corridor, the Market-to-Mission corridor, the Theater District, Mid-Market, and all four downtown BART stations into Southern’s jurisdiction. By the City’s own projections, this represents a 41% increase in calls for service and a 51% increase in crime incident reports for Southern — including roughly 1,112 additional burglaries and thefts and 13,650 additional assaults and violent crimes per year.

#### **4. DMACC is not a substitute for station staffing**

Throughout its existence, city leaders have frequently cited DMACC officers and resources as evidence of attention to SOMA West. However, DMACC officers are deployed to drug-market enforcement; they are not assigned to Southern Station's patrol roster, do not respond to community calls for service, and do not provide foot patrols, beat coverage, or routine residential response. Counting DMACC against Southern's staffing shortfall, even theoretically, conflates two distinct functions and obscures the true patrol deficit for the residents, businesses, and visitors into Southern's district.

#### **5. Population has outpaced the staffing baseline.**

Population growth in Southern's current jurisdiction is significantly outpacing the city: Mission Bay (+92%), Financial District / South Beach (+61%), and South of Market (+43%), against 2.3% citywide growth. Southern's staffing baseline reflects an outdated population picture, and the August boundary changes will make it more outdated still.

**We are asking the Board to rectify Southern's disproportionately low staffing.** We will know measures are effective when Southern Station's response times are in line with the rest of other stations. Southern Station must be staffed to the workload it has — and to the workload it is about to inherit.

Thank you for calling this hearing. We look forward to participating.

Respectfully,

SOMA West Neighborhood Association

cc: Mayor Daniel Lurie  
Board President Rafael Mandelman  
Police Commission  
Police Chief Derrick Lew  
Deputy Chief Luke Martin  
Commander Amy Hurwitz  
Captain Carla Hurley  
Captain Hugh Hall

Dear Committee Chair Dorsey, Vice Chair Sauter, and Supervisor Wong,

I am Diane Amato, a resident of South Beach and I am writing to highlight the **urgency of equitable staffing increases for Southern Station**. The [SFPD Boundary Analysis of District Stations Project Report 2024](#), prepared for the police redistricting hearings that concluded at the close of last year, documented comprehensively over the recent decade the highest demand for Priority A calls on Southern, its lower staffing levels relative to other stations, AND noted that the service demands for Moscone Center and our two major events venues were not even calculated in the data. **For 10 years, Southern has been behind its counterparts in staffing, and the situation is set to compound as it absorbs the Market St corridor.**

I understand that ALL stations are understaffed. Our neighborhood is not looking for privileged treatment. We are looking for:

- Staffing commensurate with documented workload within the parameters of existing staff numbers, equitably allocated. Our 10-year staffing deficit needs to be corrected, and then we need additional staffing to cover the added incident load from the addition of the Market St corridor.
- We need clarification on how the Drug Market Agency Coordination Center (DMACC) unit and the Hospitality Task Force which overlap Southern's boundaries are staffed, and assurance that their numbers are not counted as part of Southern's core staffing. These units focus on visiting populations with issues not captured in calls for service and layered on top of resident and commercial needs.
- We need staffing to fill the foot beat positions designated to serve the Embarcadero Navigation Center area per a City-approved MOU. Southern currently relies on volunteers as available, and overtime pay.

Our Southern Station officers—and our succession of Captains--have been doing impressive work and they have my full support. But **what they REALLY need is for high-level SFPD management to supplement their numbers relative to the documented demands and in proportion to all districts.**

Sincerely  
Diane Amato

May 27, 2026

Dear Supervisors Dorsey, Sauter, Wong, and SFPD Chief of Police Lew,

My name is Bettina Cohen. For identification purposes, I am the President of the new Mission Bay Neighborhood Association. I want to start by thanking Supervisor Dorsey for holding a hearing on Southern Police Station Staffing Plans.

Mission Bay Neighborhood Association formed in part over concerns related to Southern's understaffing, glacial response times for Priority C calls in our neighborhood which can extend into days while there are events at Moscone, Oracle Park and Chase Center, and our alarm at the expansion of the Southern District in the recent police redistricting.

A **NOT** well-known fact about Mission Bay is that hundreds of units of housing in Mission Bay is Permanent Supportive Housing. These neighbors are represented by the new Mission Bay Neighborhood Association, with a couple of them serving on our board. Mission Bay neighbors at all properties in our neighborhood include elderly and disabled people, families with young children, and there are hundreds of low-income families and individuals including formerly unhoused neighbors.

Mission Bay's Priority C calls have the slowest response time in the City – while we are the neighborhood welcoming Chase Center and Oracle Park crowds. The games and concerts are contributing to the City's economic recovery, and are occurring simultaneously with greater frequency. My personal experience last fall when dual events occurred was that two days went by before a Priority C call at my building was answered, after my building was vandalized, and personal property was stolen, including thefts from our mail room. I attended a Southern Station community meeting the second night after the break-in, where police staff informed me that Southern had more than 30 unanswered service calls that day, and my building was one of those unanswered calls.

I spoke at Police Commission hearings at least twice this past year, but Commissioners persisted in framing redistricting and understaffing in terms of, “Southern isn’t as bad off as the TL.”

I described changes I’m seeing in my neighborhood, and told Commissioners in one hearing, “Equity is not achieved by making other neighborhoods suffer as the TL suffers.”

One more plea for greater police service in Mission Bay -- Please ensure that Southern is adequately staffed for greater enforcement of traffic laws in our neighborhood, so that we do not see another tragedy like the one that occurred on Feb. 27, when a 2-year-old girl was fatally injured and her mother severely injured while crossing Fourth Street at Channel. A greater police presence would deter violent driving.

Please take us seriously when we request adequate staffing for the soon-to-be expanded Southern District. Our staffing levels need to match the Southern Station’s workload.

Thank you,

Bettina Cohen  
Mission Bay Neighborhood Association, President

Dear Monique,

As a homeowner and parent of a young two-year-old child living in SoMa, I am deeply concerned about the severe understaffing and dangerously slow SFPD response times in our neighborhood. My family and I have chosen to build our life here, and like many residents, we want to feel safe walking our streets, visiting our parks, and simply coming home at night without worrying whether help will arrive when needed.

With the recent expansion of Southern Station's responsibilities, asking an already overstretched station to absorb a major increase in workload without permanent additional staffing puts our community at serious risk. We are not asking for special treatment — we are asking for equitable public safety and the same level of responsiveness that residents in other parts of San Francisco expect and receive.

I strongly urge the Board of Supervisors to prioritize immediate and permanent staffing increases for Southern Station, along with dedicated foot patrols and equitable allocation of resources. Visible foot patrols would make a meaningful difference for families like mine by improving both safety and quality of life throughout SoMa. Our neighborhood deserves response times and police presence that reflect the needs of this growing and heavily impacted district.

Thank you for your time, leadership, and attention to this critical issue.

Regards,

Trey Suddaby

Committee Chair Dorsey  
Vice Chair Sauter  
Supervisor Wong,

I am a resident at 300 Berry St in Mission Bay and on the Board of the South Beach Rincon Mission Bay Neighborhood Association and am writing to highlight the urgency of equitable staffing increases for Southern Station. The SFPD Boundary Analysis of District Stations Project Report 2024, prepared for the police redistricting hearings that concluded at the close of last year, documented comprehensively over the recent decade the highest demand for Priority A calls on Southern, its lower staffing levels relative to other stations, AND noted that the service demands for Moscone Center and our two major events venues were not calculated in the data. For 10 years, Southern has been behind its counterparts in staffing, and the situation is set to compound as it absorbs the Market St corridor.

I understand that ALL stations are understaffed. Our neighborhood is not looking for preferential treatment. We are looking for:

Staffing commensurate with documented workload within the parameters of existing staff numbers, equitably allocated. Our 10-year staffing deficit needs to be corrected, and then we need additional staffing to cover the added incident workload from the addition of the Market St corridor.

We need clarification on how the Drug Market Agency Coordination Center (DMACC) unit and the Hospitality Task Force which overlap Southern's boundaries are staffed, and assurance that their numbers are not counted as part of Southern's core staffing.

We need staffing to fill the foot beat positions designated to serve the Embarcadero Navigation Center area per a City-approved MOU. Southern currently relies on volunteers as available, and overtime pay.

Our Southern Station officers—and our succession of Captains--have been doing impressive work and they have my full support. But what they REALLY need is for SFPD leadership to provide direction to supplement their numbers relative to the documented workload demands and in proportion to all districts.

Thanks in advance,

Bruce Agid