



# CLAY THEATRE (2261 FILLMORE STREET) LANDMARK DESIGNATION (BOS FILE NO. 220190)

APRIL 11, 2022  
BOS – LAND USE & TRANSPORTATION COMMITTEE HEARING

Source: San Francisco Planning Department, 2022

M. Pilar LaValley, LEED AP  
Senior Preservation Planner  
pilar.lavalley@sfgov.org



**San Francisco**  
**Planning**



**Clay Theatre (original façade), October 7, 1940.**

Source: San Francisco Public Library, Historic Photograph Collection (AAA-8623)

<http://sflib1.sfpl.org:82/record=b1003696>



**Clay Theatre, 1964**

Source: San Francisco Public Library, Historic Photograph Collection (AAA-8622)

<http://sflib1.sfpl.org:82/record=b1003695>

The image shows the interior of a movie theater. The walls are covered in deep red, vertically pleated curtains. A large, bright white screen is centered at the front of the room. The ceiling is dark with recessed lighting fixtures. The floor is dark, and rows of dark-colored seats are visible in the foreground, facing the screen. The overall atmosphere is classic and elegant.

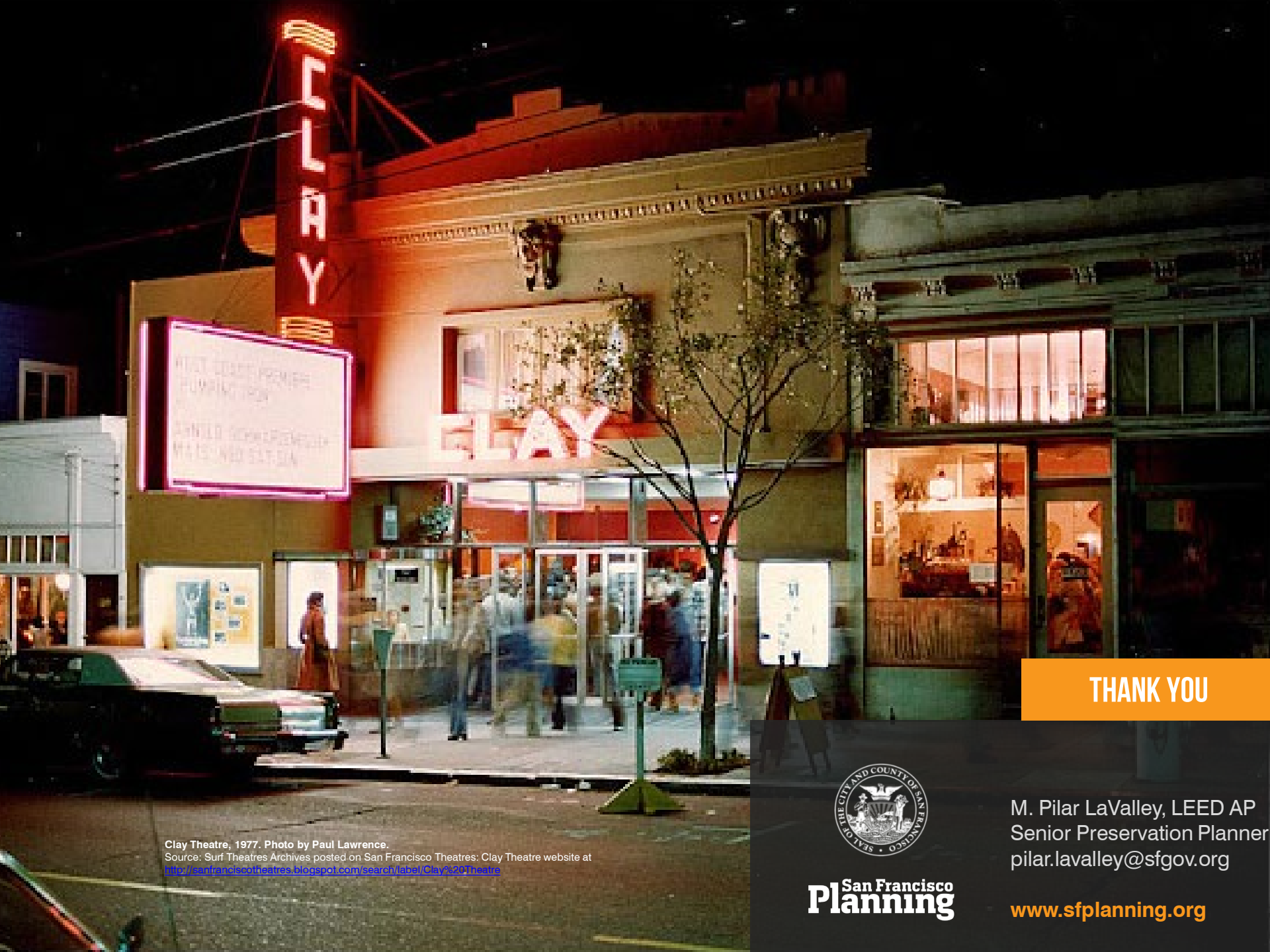
## Events (NR Criterion A)

- One of the oldest single-screen Nickelodeon movie theaters in SF (1913)
- Development of early 20<sup>th</sup> century neighborhood movie theaters
- First dedicated theatre for foreign films in SF (1935)

## Architecture (NR Criterion C)

- Embodies distinctive characteristics of both an early 20<sup>th</sup> century Nickelodeon and of a single-screen neighborhood movie theater

Source: *San Francisco Theatres: Clay Theatre website*



Clay Theatre, 1977. Photo by Paul Lawrence.  
Source: Surf Theatres Archives posted on San Francisco Theatres: Clay Theatre website at <http://sanfranciscotheatres.blogspot.com/search/label/Clay%20Theatre>

**THANK YOU**



M. Pilar LaValley, LEED AP  
Senior Preservation Planner  
[pilar.lavalley@sfgov.org](mailto:pilar.lavalley@sfgov.org)

**San Francisco  
Planning**

[www.sfplanning.org](http://www.sfplanning.org)