



School Readiness Reopening Dashboard Update November 13, 2020

Fall Plan 2020

Phase 1: Distance Learning initially (phased return)

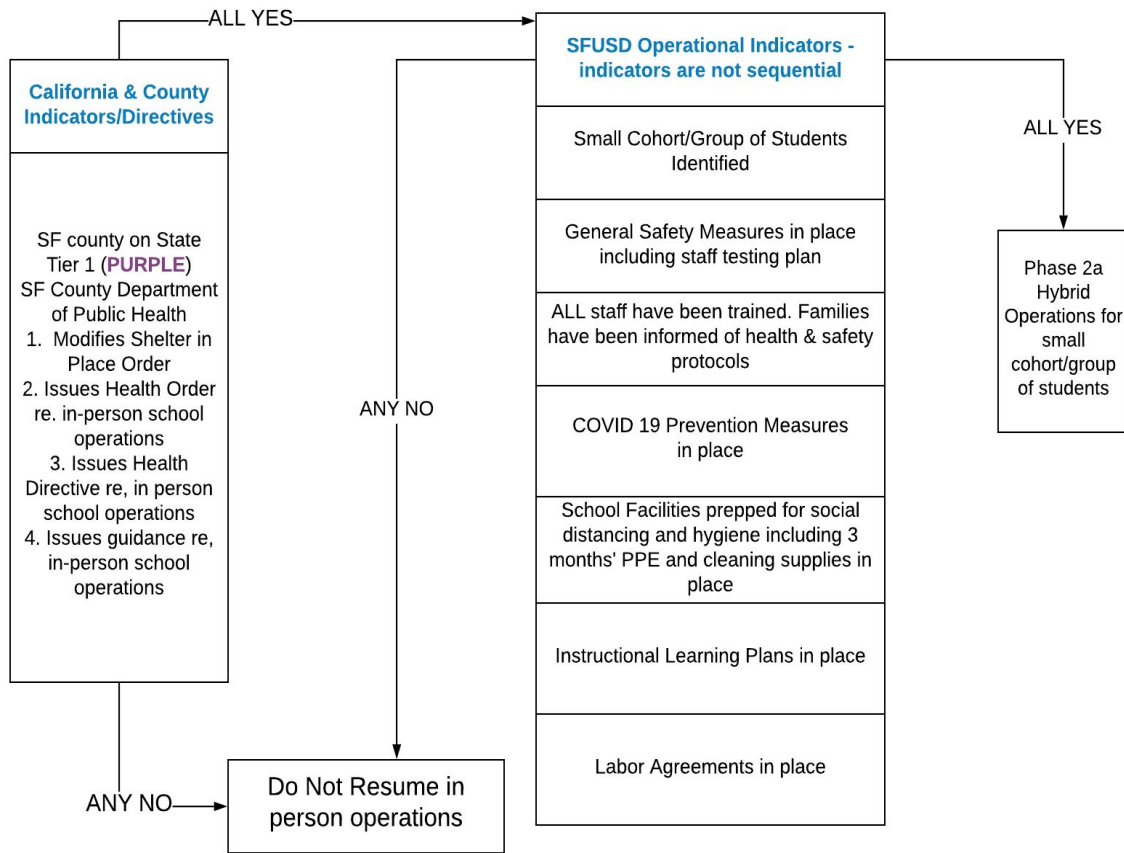
Phase 2: Hybrid / Gradual Return

Phase 3 : Full Return

- All students begin in distance learning on August 17
- Plan for Distance Learning to start and then phase into a hybrid model once science and data suggest it is safe to do so
- Consider limited in-person school for small groups of priority students at a limited number of physical school locations as we move into Phase 2

Phase 2A -
Gradual Return
Operations
Decision Tree

Small
Cohort/Group
Return



School Reopening Readiness Overview for Phase 2A

School Reopening Readiness Overview for Phase 2A shares the work happening to prepare schools for a safe reopening for small groups of students. At SFUSD, these small groups are the youngest students (early elementary) and students with disabilities in moderate/severe special day classes (more on [Phase 2A here](#)).

Below are the major areas of work SFUSD is undertaking to prepare for a phased-in approach to in-person learning. This includes modifying learning plans and bell schedules, developing and deploying appropriate protocols and training for staff, providing sufficient cleaning and PPE supplies for all sites, and instituting prevention measures and changes to facilities. We will update this information bi-weekly to share the current status of each area.

School Reopening Dashboard

AREA OF WORK	STATUS
Have small cohorts/group of students been identified for reopening?	 Work is in progress (>25%-75%)
Are general safety measures in place, including a staff testing plan?	 Work is in progress (>25%-75%)
Have all staff been trained?	 Work is in progress (>25%-75%)
Have families been informed of health and safety protocols?	 Work is in progress (>25%-75%)

SFUSD School Re-opening Readiness Dashboard for Phase 2A

#1

Small cohorts / groups of students
identified for reopening

For priority groups in 2A

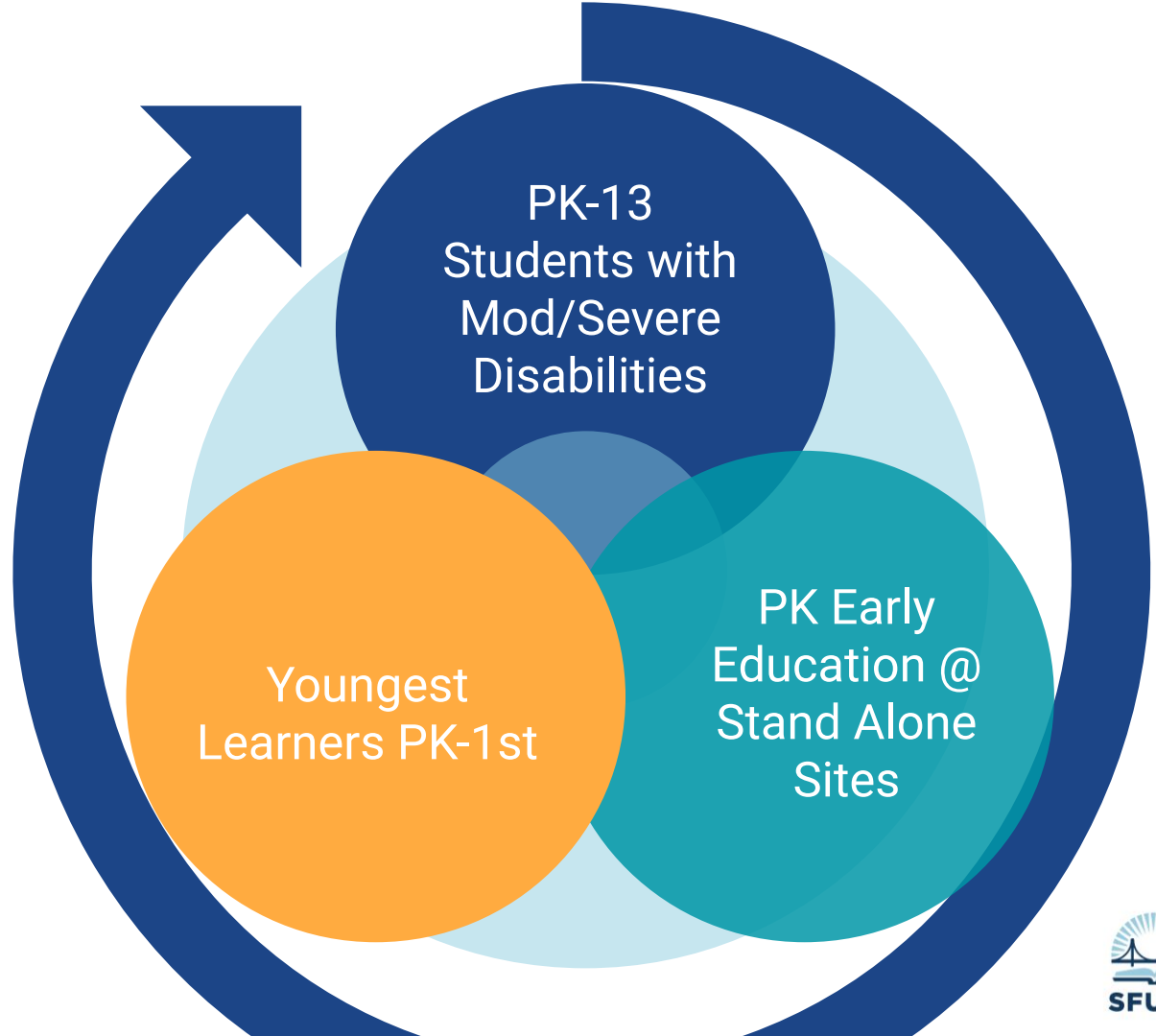
PK/Early Ed =
937 students

PK-5 SDC Mod/Severe =
250 students

TK-1st = 8837 students

County= 105 students

Secondary SDC
Mod/Severe =
437 students



PHASE 1: DISTANCE LEARNING

PHASE 2a: Gradual Return/ Hybrid

Wave 1: 11 schools
5 Early Education Schools PK stand alone
6 ES sites PK, Mod/Severe SDC
1 County Court School
Full Day

Wave 2: 27 sites
6 Early Education Schools PK
19 ES sites PK, Mod/Severe SDC
2 County Community Schools
Full Day

Wave 3:
ES Sites PK
MS/HS sites Mod/Severe SDC
Full Day

Wave 1 schools TK, K, 1st
Hybrid schedule

Wave 2 schools TK, K, 1st
Hybrid schedule

PHASE 2b: Gradual Return/Hybrid

Homeless & Foster
Youth

Students with limited
online activity

PHASE 3: FULL RETURN

#1 Have small cohorts / groups of students been identified for reopening?

Overall 70%

#	#.	Detailed Tasks	
1	1	Identify PK-13 students in the Mod/Severe pathway for reopening (735 students)	In Progress 65%
	2	Identify PK student in person seats across Early Education Schools and Co-located (1,135)	In Progress 65%
	3	Identify TK-1 general education student in person seats	Started 15%
	4	Identify site location for priority groups	Almost Done 85%

#1 Have small cohorts / groups of students been identified for reopening?

Overall 70%

Progress

- Drafted plan to gradually return students in priority groups to in-person instruction at school sites in waves, based on a 'home school strategy' with target dates
 - *By completion of Phase 2A, in-person learning option will be available to all students in named priority groups*
 - *Pending Board feedback and approval*
- Identified potential school sites to reopen for Wave 1 and Wave 2
 - *Wave 1 schools: PK and/or Mod/Severe SDC classrooms - 11 sites to start*
 - *Wave 2 schools: Add additional PK, Mod/Severe SDC classrooms at up to 27 sites, and begin to include TK-1st grade students to Wave 1 schools*
 - *Wave 3 schools will include remainder of elementary school sites, open Middle and High schools for mod/severe SDC*
 - *Each site assessed for safety and feasibility*

#1
Have small
cohorts /
groups of
students
been
identified for
reopening?

Overall 70%

Progress (continued)

- Launched collaboration and planning meetings with site leaders
 - *Hybrid Learning Partnership Protocol with Principals Topics: Use of Space, Mapping In-Person Learning Day, Curriculum & Instructional Resources, Communication Plan*
 - Review new safety protocols and identify classroom and communal spaces to support instructional model with 14:1 ratio.
 - Plan new occupancies and flow of traffic to support safety guidelines and identified new routines necessary for students and staff.
 - Identify outdoor spaces for each cohort and instructional strategies to support learning outside, ensuring safety protocols and student ratios are maintained throughout the day.

#1 Have small cohorts / groups of students been identified for reopening?

Overall 70%

Next Steps

- Understand interest for in-person and distance learning to inform next steps of planning; survey and register families in priority groups
- Notify, engage and prepare staff of Wave 1 and Wave 2 sites for reopening
- Verify reopening plan, timeline and resources across stakeholder groups

Key Things to Note

- Language (waves and phases) are confusing and we continue to work on communication upgrades to make information clear and accessible to all stakeholders
- Our goal is to get students back to in-person learning at their 'home schools,' recognizing a need to adhere to safety, staffing and facility considerations
- Staffing does not necessarily align with site identification and/or number of students returning for in-person learning
- Plans pending collaboration with various labor partners

#2

General safety measures in place,
including a staff testing plan

#2 Are general safety measures in place, including a staff testing plan?

Overall 40%

#	#.	Detailed Tasks	
2	1	Ensure every facility has a COVID-19 prevention plan that prioritizes equity and designates a lead.	In Progress 35%
	2	Build protocols for potential repeated closures, in case of COVID-19 exposure.	In Progress 65%
	3	Build protocols to support youth with access and functional needs who may be at increased risk.	In Progress 45%
	4	Develop a plan for ongoing surveillance testing of all staff per SFDPH guidelines	In Progress 40%
	5	Data collection and monitoring is defined so that SFUSD aligns to SFDPH data collection efforts.	Started 15%

#2 Are general safety measures in place, including a staff testing plan?

Overall 40%

Progress

- Almost all the health and safety protocols have been developed for administrators, employees, symptom screening, families, T10s, and more.
- Finalized agreements with Curative for test kits and analysis and Smartsheets to support development of return to school content management systems

Next Steps

- The work of standing up the test sites and developing the communication systems will continue

Key Things to Note:

- The operational lift to implement the general safety measures requires dedicated resources around staffing, technology and project management that we are working to identify.

Our agreement with Curative provides us with the tools we need to build a robust testing program

Our goal is to have a test site at every school site as they reopen. This requires:

- 1-2 proctors for every school site; additional roles at each test site may be required
- Complex data mapping and implementation to integrate Curative into our data systems so that testing information can move quickly and accurately, especially when a test result is positive
- The creation of a COVID-19 school dashboard that allows school sites to manage testing data, attendance data (for contact tracing purposes), training data around health and safety, etc.
- A centralized team to manage these processes on an ongoing basis, including data analysts to download and upload data across various systems, training support for proctors and school sites, and ongoing maintenance and help-ticket support
- At full scale, SFUSD will run the largest COVID-19 testing operation in the city across 120+ locations

#3

All staff trained in COVID 19 health
and safety protocols

#3

Are all staff trained in COVID 19 health and safety protocols?

Overall 65%

#	#.	Detailed Tasks	
3	1	Identify and group the types of training staff will need based on staff roles and responsibilities	In Progress 80%
	2	Partner with key stakeholders to develop and deploy outreach for training rollout, informing staff of key dates an..	In Progress 55%
	3	Create differentiated google training modules for staff and create system to monitor training	In Progress 85%
	4	Prepare for training sessions	In Progress 60%
	5	Launch training modules, gather feedback, adjust as necessary, and complete training for reopening	Started 15%

#3

Are all staff trained in COVID 19 health and safety protocols?

Overall 65%

Progress

- Nearly all of the training modules have been developed for the health and safety protocols for administrators, employees, symptom screening, families, T10s, and more.

Next Steps

- Create communication tools and schedule information sessions for employees, administrators, and other school staff

Key Things to Note

- Trainings are designed to be asynchronous/independent with information sessions provided.

#4

All families informed of COVID 19
health and safety protocols

#4 Are all families informed of COVID 19 health and safety protocols?

Overall 50%

#	#.	Detailed Tasks	
4	1	Identify information families need to know regarding in-person instruction	Almost Done 95%
	2	Determine best communication vehicles and channels to reach families	Almost Done 90%
	3	Create multilingual assets that can be adapted for all phases	Started 30%
	4	Determine how families can confirm reviewing information	Almost Done 75%
	5	Launch family information campaign for Phase 2a	Started 10%

#4 Are all families informed of COVID 19 health and safety protocols?

Overall 50%

Progress

- Family facing information regarding health and safety protocols has been developed -meals, transportation, symptom checking
- Multi-dimensional explanation and viewable graphs of Phase 2A: school waves, student groups and timeline
- Checklist developed (and growing) of all assets (forms, letters, training modules, etc.) created to date across departments, what stage of readiness they are in (translation pending et al.) and what is still needed
- Visual alignment: Central drive folder with signs, icons, etc.

Next Steps

- Finalize Phase 2A initial notification and questionnaire to Phase 2A families

Key Things to Note

- Sequence for Phase 2A family notifications:
 - 1) Initial in-person offer with basic info
 - 2) Follow-up detailed information to registered families
 - 3) Onboarding

#5

COVID 19 Prevention Measures in Place

#5 Are COVID 19 Prevention Measures in Place?

Overall 45%

#	#.	Detailed Tasks	
5	1	Develop plan for implementing protocols in the event that staff or student exhibit COVID 19 systems, test positive, or ..	Almost Done 95%
	2	Prepare staff to do regular health screenings and create systems for contact tracing; ensure appropriate resources	Started 20%
	3	Prepare communication protocols aligned to federal regulations (i.e., FERPA, HIPAA) that share information abo..	In Progress 40%

#5 Are COVID 19 Prevention Measures in Place?

Overall 45%

Progress

- Health & safety protocols and plan have been developed
- System is in place to inform SFDPH of any staff, student or family who reports testing positive. SFDPH will follow up with cases for contact tracing and connection to resources.

Next Steps

- Communication to staff regarding return to school training modules to complete PRIOR to return
- Continue to work with DPH to identify support from DPH for resources & service when a staff or student tests positive, is a close contact or exhibits COVID 19 like symptoms.

Key Things to Note

- Awaiting labor partner agreement to identify the staff who will be prepared for health screenings

#6

School Facilities prepped for social distancing

#6 Are School Facilities prepped for social distancing?

Overall 15%

#	#.	Detailed Tasks	
6	1	Assess school site infrastructure for Hybrid Learning Readiness (ventilation, kitchens, building systems, etc.)	In Progress 35%
	2	Cleaning & disinfection supplies, staff training, and staff schedules in place	Completed 100%
	3	Managed circulation plans of students, staff, and family through and across site	Started 15%
	4	Installation and repairs necessary for hybrid learning	Started 10%

#6

Are School Facilities prepped for social distancing?

Overall 15%

Progress

- 30 sites have been assessed for functioning building systems and ventilation since this summer, including all Wave 1 sites

Next Steps

- Complete all Wave 2 site assessments by Fall Break; Wave 3 by mid December

Key Things to Note

- Site Assessment data is fed into Hybrid Learning Partnership Protocol sessions, and directly informs final count of classrooms available for Hybrid Learning

Understanding Facilities Capacity for In-Person Learning

- Existing custodial staffing can clean and disinfect ~3.2m sq ft in a 24 hour period
- 3.2m sq ft = elementary schools and early education stand alone sites
- Assume 50% classroom capacity due to social distancing measures = 15,000 daily seats

#7

Three month supply of PPE in place

#7

Do we have
three month
supply of PPE
in place?

Overall 85%

#	#.	Detailed Tasks	
7	1	Three month supply of supplies to support healthy hygiene behaviors, including soap, tissues, no-touch trash cans, face..	Almost Done 85%

#7

Do we have
three month
supply of PPE
in place?

Overall 85%

Progress

- All PPE supplies in place to support PK - 6 students and staff, with exception of signage and partitions

Next Steps

- Partitions on order; should arrive in about 3 weeks time
- Signage in production

Key Things to Note

- Partitions will be provided for all educator desks and customer service desks, and used to separate students at group desks

#8

Instructional Learning Plans in Place

#8 Are Instructional Learning Plans in place?

Overall 50%

#	#.	Detailed Tasks	
8	1	Develop Community Health Pledge for how schools will establish prevention and mitigation norms	In Progress 80%
	2	Develop and launch in-person learning models	In Progress 60%
	3	Develop and launch distance learning models	In Progress 70%
	4	Develop and launch additional key structures (e.g., bell schedules, outdoor instruction, technology)	In Progress 55%
	5	Develop and launch extracurricular and athletics plan	Started 15%

#8 Are Instructional Plans in place?

Overall 50%

Progress

- Researched best practices for distance & hybrid learning; partnered with, and learning collaboratively with, educators from other large urban districts to inform our reopening strategies
- Current thinking for in-person learning:
 - To extent possible, PK and Students in Moderate/Severe SDC classrooms return for daily in-person learning
 - Other students groups return in a hybrid format, rotating through a mix of in-person and virtual learning throughout the week
 - Families/students will have option to opt out of in-person learning and continue to engage in online distance learning
 - When at school, students will receive live instruction, and when at home, students receive a combination of asynchronous instruction and synchronous instruction in line SB-98
- Engaging site leaders in the hybrid learning partnership protocol to plan in-person learning and distance learning options

#8 Are Instructional Learning Plans in place?

Overall 50%

Next Steps

- Finalize in-person schedules, in collaboration with transportation
- Finalize plan for students who do not join in person
- Survey Staff and Families about interest/capacity to participate in in-person (implications for class lists, schedules and job duties)
- Reconvene Teaching and Learning Working Groups for input and innovation around the instructional learning plans

Key Things to Note

- A key principle of our planning is that it's best for students to be at their home site, with their teacher/staff
- Continue to enhance distance learning while planning and facilitating in-person learning
- Will need additional classroom resources and materials to support safety protocols and prevent sharing of high-touch materials

#9

Labor Agreements (MOUs and Side letters) in Place

#9 Are Labor Agreements (MOUs and Side letters) in place?

Overall 33%

#	#.	Detailed Tasks	
9	1	Exchange proposals with labor partners	In Progress 33%
	2	Negotiate (and agree to) terms for safety, distance and hybrid learning models	In Progress 26%
	3	Verify and monitor execution of existing MOU agreements	Almost Done 100%

#9 Are Labor Agreements (MOUs and Side letters) in place?

Overall 33%

Progress

We have passed the following proposals:

- ✓ Proposals to Return to In-Person Instruction (UE & UA)
- ✓ Proposals to Return Most Vulnerable Students in Phase 2A (UE and UA)
- ✓ Proposal to Provide In-Home Services to Students (UE)
- ✓ Notice to School Site Leaders to Return to Sites (UA)
- ✓ Notice to Bus Paras to Return to Work (UE)
- ✓ Proposal to Implement Assessment Hubs (UE)
- ✓ Proposed Side Letter Re COVID-19 Pandemic (SEIU)
- ✓ Proposed MOU Re COVID-19 Pandemic (Local 21)
- ✓ Proposal for 20-21 Teacher Evaluation (UE)

#9 Are Labor Agreements (MOUs and Side letters) in place?

Overall 33%

Next Steps

- Continue meeting and negotiating with all of our labor partners
- Continue working with school site leaders to return to sites to continue preparing sites for in-person instruction
- Create conditions to enable the opportunity for teachers to return to and work from their own classrooms

Key Things to Note

- We know we can't return students for in-person instruction without the collaboration and support of our labor partners
- We have a shared sense of urgency to return our most vulnerable students beginning in January

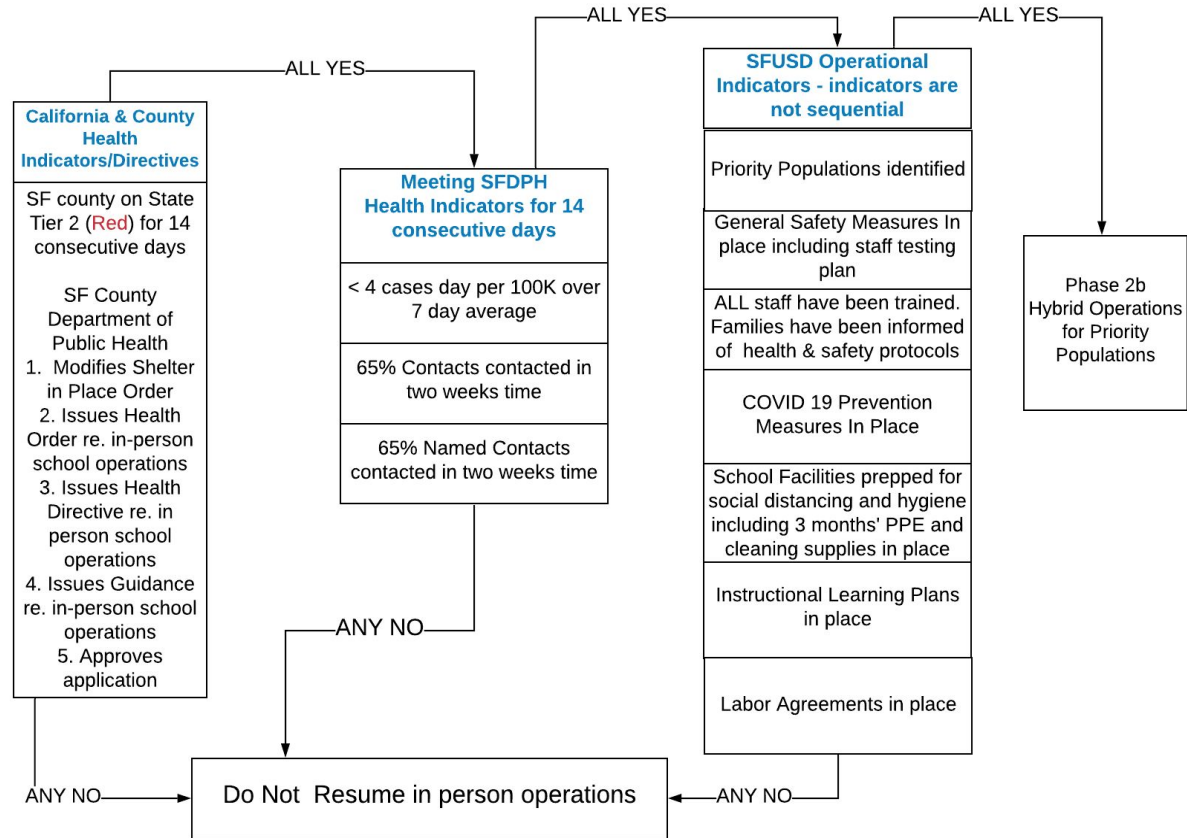
Area of Work	Status
1 Have prioritized populations of students been identified for reopening?	In Progress 25%
2 Are general safety measures in place, including a staff testing plan?	In Progress 35%
3 Have all staff been trained?	In Progress 20%
4 Have families been informed of health & safety protocols?	In Progress 50%
5 Are COVID-19 prevention measures in place?	In Progress 45%
6 Are school facilities prepared for social distancing and hygiene?	Started 10%
7 Is there 3-month supply of PPE and cleaning supplies stocked?	In Progress 65%
8 Are instructional learning plans in place?	In Progress 25%
9 Are labor agreements in place?	In Progress 26%

SFUSD School Re-opening Readiness Phase 2B

Phase 2B - Gradual Return Operations Decision Tree

Priority Populations

DRAFT SFUSD Phase 2b Hybrid Operations Decision Tree_Priority Populations



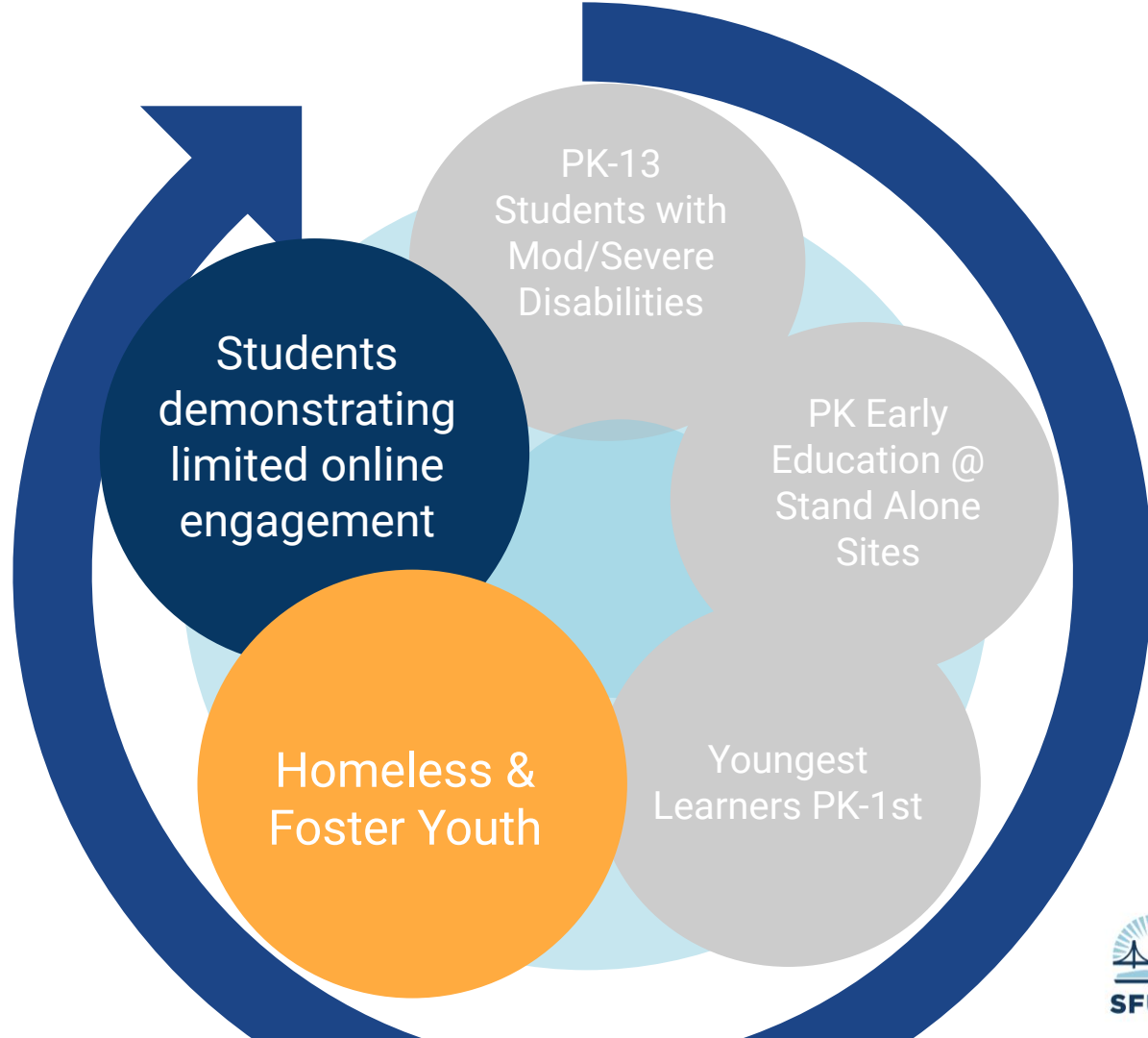
Gradual Return to In Person Learning for 2B

Homeless Youth = 2,131 students

Foster Youth = 221 students

Public Housing = 2,257 students

Limited Engagement Online = about 1,025 students



Phase 2B

Health and Safety of Students & Staff

Facilities Preparation & Maintenance

Labor Agreements

Communication

- Weekly Wednesday Digests:
 - Leader's Digest = all managers
 - Family Digest = all families
 - Staff Digest = all staff
- Weekly Reopening Video Updates
 - QR codes for viewers to share questions to inform future online FAQs
- District Website re. Reopening
 - Phase 2A + 2B dashboards
 - Negotiations updates*

Stakeholder Engagement

- Family Wellness Check-ins
- Parent Teacher Conferences
- Questionnaire to Phase 2A Families*
- Staff Wellness Surveys
- High School Wellness Survey*
- Work groups (monthly convenings)
- City + CBO partner convenings

*Beginning soon

Resources Needed

Costs* of Gradual Return to In-Person Learning

*Working estimates; details of our reopening plans will drive these costs up or down

Category	Description	Costs* (\$ millions)
Additional custodians	150 - 200 custodians for enhanced cleaning protocols at MS and HS	\$20.0
Health screening	10-20 school nurses; quarantine areas	\$2.2 - 3.5
Personal Protective Equipment (PPE)	Masks, gloves, face shields, disinfecting wipes, hand sanitizer, handwashing stations	\$1.5 - 2.5
Cleaning supplies	Electrostatic disinfectant sprayers, general cleaners, microfiber cloths	\$0.6 - 1.5
Other social distancing modifications	Physical adaptation of campuses; customer service shields	\$0.5 - 1.5

Costs* of Gradual Return to In-Person Learning

*Working estimates; details of our reopening plans will drive these costs up or down

Category	Description	Costs* (\$ millions)
Lower class size	Additional positions based on lower class sizes for social distancing and/or academic support	\$13.1 - 32.8
Individual Student Reading Materials	Leveled Readers and Book Sets	\$1.0 - 1.5
Outdoor Classroom Materials	Rolling whiteboard, clipboards, writing utensils, resources to make space outside be effective for teaching and learning.	\$0.5 - 0.8
Individual Student Learning Materials/Kits (for in-person & distance learning)	Containers, Paper/Journals, Writing Utensils, Manipulatives, Sticky notes, Markers, index cards and other materials used in class	\$0.8 - 1.0
Total		\$40.2-65.1

Potential City Support for Phase 2

- Testing
 - a. Proctors
 - b. Management Support
- Facilities
 - a. Site assessments
 - b. Custodians
- Additional project management resources
- Financial support for hybrid instruction

Thank you!