

# ROLE OF TOXICOLOGY IN SEXUAL ASSAULT INVESTIGATIONS



OFFICE OF THE CHIEF MEDICAL EXAMINER

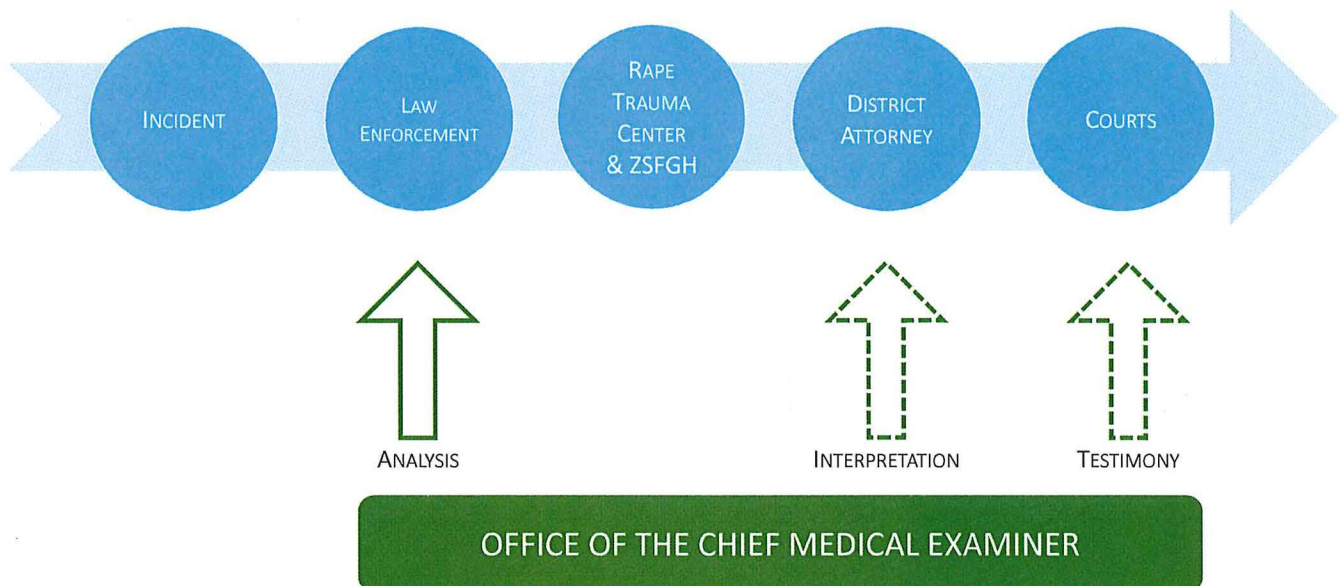
LUKE N. RODDA, PHD

Chief Forensic Toxicologist & Director of the Forensic Toxicology Laboratory

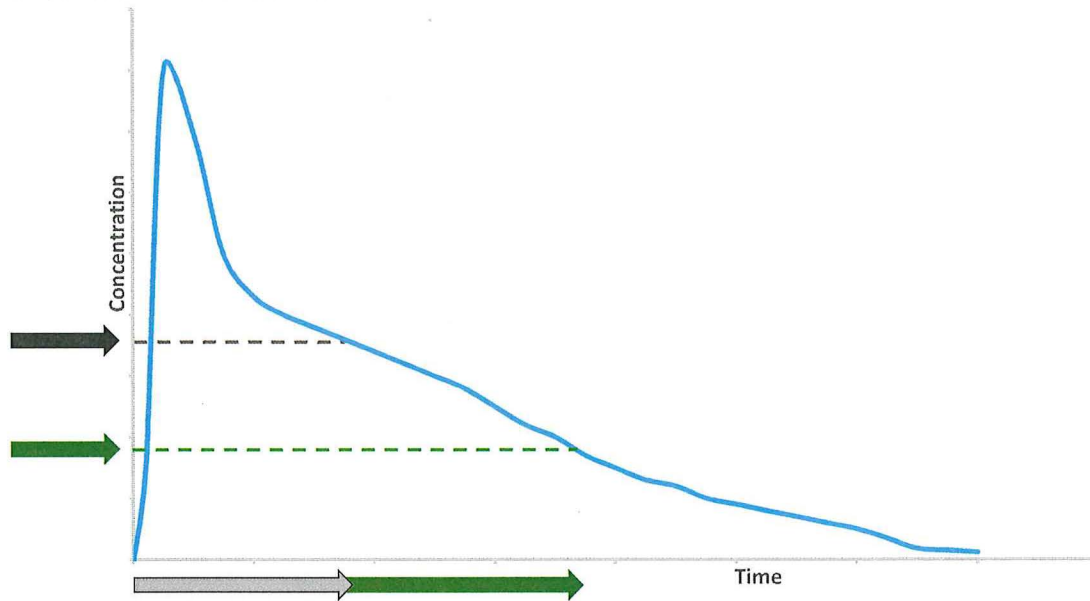
SUE PEARRING, MS, D-ABFT-FT

Forensic Toxicology Supervisor

## INVESTIGATIVE PROCESS



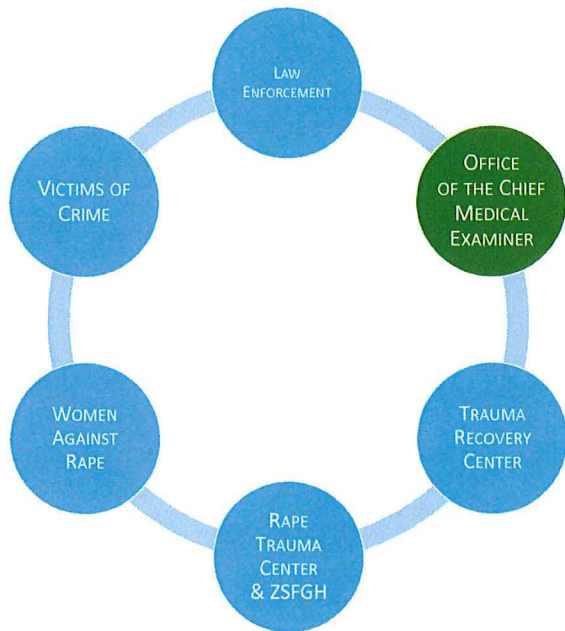
# FIND DRUGS ONBOARD



## WHAT WE LOOK FOR

|                                              |                                       |                                              |                                          |                                                   |
|----------------------------------------------|---------------------------------------|----------------------------------------------|------------------------------------------|---------------------------------------------------|
| Alcohol [Ethanol]                            | Butalbital                            | Imipramine and Metabolite                    | Norvaso [Amlodipine]                     | Seroquel [Quetiapine]                             |
| GHB [Gamma-Hydroxybutyric Acid]              | Caffeine                              | Imovane/Lunesta [Eszopiclone / Zopiclone]    | Novocaine [Procaine]                     | Skelaxin [Metaxalone]                             |
| Rohypnol [Flunitrazepam]                     | Carbinoxamine                         | Kemadrin [Procyclidine]                      | O-Desmethylvenlafaxine                   | Soma [Carisoprodol]                               |
| Acetyl Fentanyl                              | Carbocaine/Polocaine [Mepivacaine]    | Rythmol [Propafenone]                        | Orabase/Oragel [Benzocaine]              | Sonata [Zaleplon]                                 |
| Cannabinoids [Delta-9 Carboxy THC]           | Carbromal                             | Keppra [Levetiracetam]                       | Orphenadrine                             | Sparine [Promazine]                               |
| Cerespan [Papaverine]                        | Cardizem [Diltiazem]                  | Klonopin [Clonazepam]                        | Oxy [Oxycodone]                          | Stadol [Butorphanol]                              |
| Cocaine                                      | Chlorpromazine                        | Lacosamide                                   | Oxymorphone                              | Strattera [Atomoxetine]                           |
| DMT/Ayahuasca [Dimethyltryptamine]           | Chlor-Trimecon [Chlorpheniramine]     | Lamictal [Lamotrigine]                       | Parafon Forte [Chlorzoxazone]            | Strychnine                                        |
| Dolophine [Methadone and Metabolite]         | Citalopram                            | Lamisil [Terbinafine]                        | Parlodol [Bromocriptine]                 | Stugeron [Cinnarizine]                            |
| Ergamisol/Levasole [Levamisole]              | Clarinet [Descarboethoxylopratadine]  | Levo-Dromoran [Dextropropofol & Levorphanol] | Paxil [Paroxetine]                       | Surmontil [Trimipramine and Metabolite]           |
| Fentanyl                                     | Clomipramine and Metabolite           | Levoprome [Methotrimeprazine]                | Peganone [Ethotoin]                      | Symmetrel [Amantadine]                            |
| Heroin and Metabolites [6-acetylmorphine]    | Clonidine                             | Librium [Chlordiazepoxide]                   | Pentobarbital                            | Talwin [Pentazocine]                              |
| Ketalar [Ketamine and Metabolite]            | Clozaril [Clozapine and Metabolite]   | Lomotil/Lonox [Difenoxylate]                 | Pentothal [Thiopental and Metabolite]    | Tapentadol                                        |
| MDA                                          | Codine                                | Lopressor [Metoprolol]                       | Periactin [Cyproheptadine]               | Tegretol [Carbamazepine and Metabolite]           |
| MDEA                                         | Cogentin [Benztropine]                | Lotrimin [Clotrimazole]                      | Permax [Pergolide]                       | Telazol [Tiletamine]                              |
| Methamphetamine                              | Cotinine                              | Lotusate [Talbutal]                          | Phenacetin and Metabolite                | Tenuate [Dietylpropion]                           |
| Methcathinone                                | D/L-Methorphan                        | Luminal [Phenobarbital]                      | Phenazepam                               | Theobromine                                       |
| Molly/Ecstasy [MDMA]                         | Daraprim [Pyrimethamine]              | Luvox [Fluvoxamine]                          | Phenazone [Antipyrine]                   | Theophylline                                      |
| PCP/Angel Dust [Phencyclidine]               | Darvon [Propoxyphene and Metabolite]  | Maldemar [Scopolamine]                       | Phenergan [Promethazine]                 | Thioridazine and Metabolite                       |
| Peyote [Mescaline]                           | Demerol [Mepheridine and Metabolite]  | Maprotiline                                  | Pheniramine                              | Ticlid [Ticlopidine]                              |
| Piperazine Designer Drugs                    | Desalkylflurazepam                    | Marcaine [Bupivacaine]                       | Phenylbutazone and Metabolite            | Tigan [Trimethobenzamide]                         |
| Substituted Cathinones                       | Desipramine                           | Mareline [Cyclizine]                         | Phenylpropranolamine                     | Tolvon [Mianserin]                                |
| 1-Hydroxymidazolam                           | Diabinese [Chlorpropamide]            | MDPV                                         | Phenyltoloxamine                         | Tonocard [Tocainide]                              |
| Adderal [Amphetamine]                        | Didrex [Benzphetamine]                | Meclostin [Clemastine]                       | Plaquenil [Hydroxychloroquine]           | Topiramate                                        |
| Afrin [Oxymetazoline]                        | Diflucan [Fluconazole]                | Mefedrone                                    | Plendil [Felodipine]                     | Trazodone                                         |
| Alavert/Claritin [Loratadine and Metabolite] | Dihydrocodeine/Hydrocodol             | Meprobamate                                  | PMA [para-Methoxyamphetamine]            | Trental [Pentoxifylline]                          |
| Alfenta [Alfentanil and Sufentanil]          | Dilaudid [Hydromorphone]              | Methoxetamine                                | Poison Hemlock [Coniine]                 | Trilhexyphenidyl                                  |
| Alpha-Hydroxyalprazolam                      | Dionin [Ethylmorphine]                | Methylone                                    | Pontocaine [Tetracaine]                  | Trileptal [Oxcarbazepine/Eslicarbazepine Acetate] |
| alpha-PVP                                    | Ditropan [Oxybutynin]                 | Mexitil [Mexitline]                          | Procainamide and NAPA                    | Ultram/Ultrax [Tramadol and Metabolite]           |
| Amidate [Etomidate]                          | Dopram [Doxapram]                     | Milnacipran                                  | Procardia [Nifedipine]                   | Valium [Diazepam]                                 |
| Amitriptyline and Metabolite                 | Doxepin and Metabolite                | Milontin [Phensuximide]                      | Pro-Fast/Adipex-P [Phentermine]          | Verapamil                                         |
| Amobarbital                                  | Doxylamine                            | Mirtazapine                                  | Proloprim/Trimpex [Trimethoprim]         | Vicodin [Hydrocodone]                             |
| Antivert [Meclizine]                         | Dymelo [Acetohexamide]                | Moban [Molindone]                            | ProSom [Eszazolam]                       | Viramune [Nevirapine]                             |
| Aricept [Donepezil]                          | Ecrinal/Tambacor [Flecainide]         | Mogadon [Nitrazepam]                         | Protriptyline                            | Visine [Tetrahydrozoline]                         |
| Asendin [Amoxapine]                          | Edronax/Vestra [Reboxetine]           | Morphine                                     | Pseudoephedrine                          | Vistaril [Hydroxyzine]                            |
| Ativan [Lorazepam]                           | Effexor [Venlafaxine and Metabolite]  | Motrin [Ibuprofen]                           | Pyrimamine                               | Wellbutrin [Bupropion and Metabolite]             |
| Atropine                                     | Ephedrine                             | Naprosyn [Naproxen]                          | Quaalude [Methaqualone]                  | Xanax [Alprazolam]                                |
| Axura/Ebixa/Namenda [Memantine]              | Flexeril [Cyclobenzaprine]            | Naropin [Ropivacaine]                        | Quinine / Quinidine                      | Xanax [Alprazolam]                                |
| Benadryl [Diphenhydramine]                   | Fluoxetine and Metabolite             | Navane [Thiothixene (Cis Isomer)]            | Razadyne [Galantamine]                   | Yohimbine                                         |
| Bentyl [Dicyclomine]                         | Fluprazapone [Zolazepam]              | Nicotine                                     | Reglan [Metoclopramide]                  | Zarontin [Ethosuximide]                           |
| bk-DMBDB [Dibutylone/Ethylone]               | Frisium/Urbanyl [Clobazam]            | Niplolept [Zotepine]                         | Requip [Ropinirole]                      | Zoloft [Sertraline]                               |
| Blocadren [Timolol]                          | Gabapentin                            | Nolvadex [Tamoxifen]                         | Ritalin [Methylphenidate and Metabolite] | Zolpidem                                          |
| Brompheniramine                              | Gemoniil [Metharbital and Metabolite] | Nordazepam                                   | Rompun [Xylazine]                        | Zonegran [Zonisamide]                             |
| Buprenex [Buprenorphine and Metabolite]      | Guafenesin                            | Normison/Restoril [Temazepam]                | Rozereem [Ramelteon and Metabolite]      |                                                   |
| Bupirone                                     | Hydroxyethylflurazepam                | Norpace [Molipramide]                        | Secondal [Secobarbital]                  |                                                   |
| Butabarbital                                 | Hydroxytriazolam                      | Norpseudoephedrine                           | Serax [Oxazepam]                         |                                                   |

# SEXUAL ASSAULT RESPONSE TEAM (SART)



**ENABLED EARLIER SAMPLE COLLECTION**

**STANDARDIZED COLLECTION PROCESS**

**INCREASED AWARENESS OF FORENSIC PRACTICES**