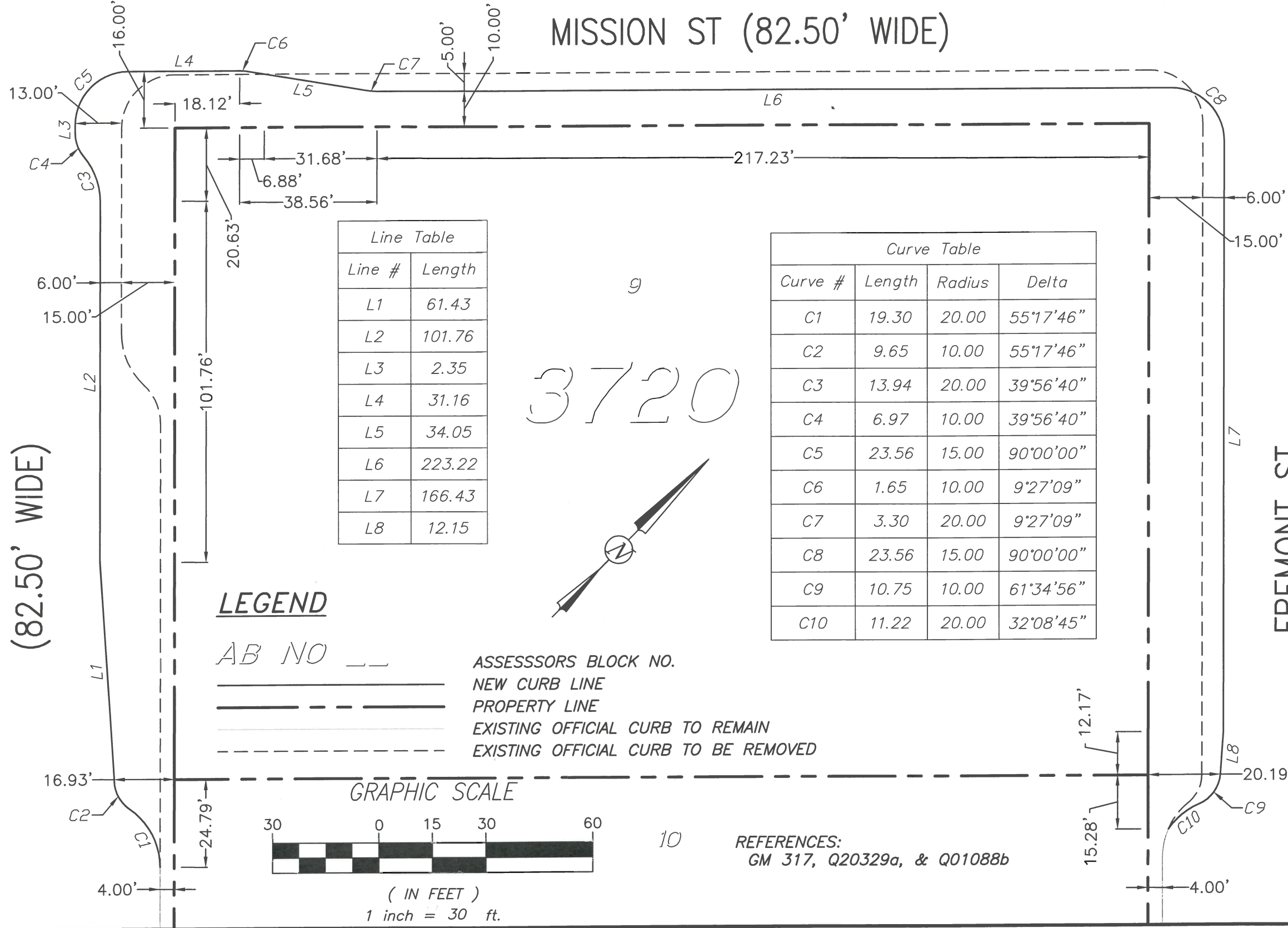


MISSION ST (82.50' WIDE)

1ST ST
(82.50' WIDE)

FREMONT ST
(82.50' WIDE)



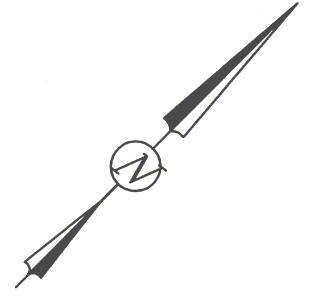
Line Table

Line #	Length
L1	61.43
L2	101.76
L3	2.35
L4	31.16
L5	34.05
L6	223.22
L7	166.43
L8	12.15

Curve Table

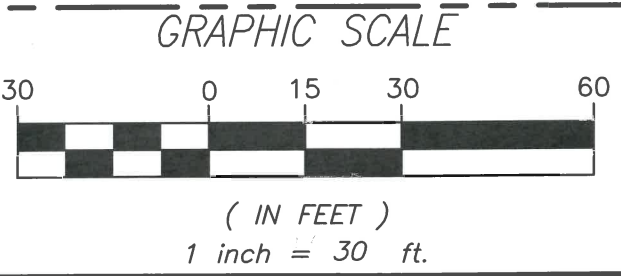
Curve #	Length	Radius	Delta
C1	19.30	20.00	55°17'46"
C2	9.65	10.00	55°17'46"
C3	13.94	20.00	39°56'40"
C4	6.97	10.00	39°56'40"
C5	23.56	15.00	90°00'00"
C6	1.65	10.00	9°27'09"
C7	3.30	20.00	9°27'09"
C8	23.56	15.00	90°00'00"
C9	10.75	10.00	61°34'56"
C10	11.22	20.00	32°08'45"

3720



LEGEND

- AB NO ASSESSORS BLOCK NO.
- NEW CURB LINE
- - - PROPERTY LINE
- EXISTING OFFICIAL CURB TO REMAIN
- - - EXISTING OFFICIAL CURB TO BE REMOVED



REFERENCES:
GM 317, Q20329a, & Q01088b



APPROVED: *Bruce R. Storrs*
 BRUCE R. STORRS
 CITY & COUNTY SURVEYOR

5/2/17
 DATE

CITY AND COUNTY OF SAN FRANCISCO
 DEPARTMENT OF PUBLIC WORKS

OFFICIAL SIDEWALK CHANGES FRONTING AB 3720 LOT 009

FILE: Q-20-889	SHEET 1 OF 1	SCALE: 1:30	REVISION 1
----------------	--------------	-------------	------------