

San Francisco Public Library

**EXPANDING INFORMATION ACCESS
FOR INCARCERATED PEOPLE**

Jeanie Austin and Rachel Kinnon, co-Principal Investigators

Jail and Reentry Services

MELLON GRANT SNAPSHOT

- \$2,000,000 for two-year period (January 2022-December 2023)
- Sub-grantees:
 - American Library Association (ALA)
 - Colorado State Library Office of Library Research Service (LRS)
- Expands capacity at SFPL
 - 1 FTE 1822 Administrative & GIS Analyst
 - 1 FTE 1823 Senior & Grant Administrative Analyst
 - 1 FTE 3630 Jail & Reentry Services Librarian

LIBRARY SERVICE NEED

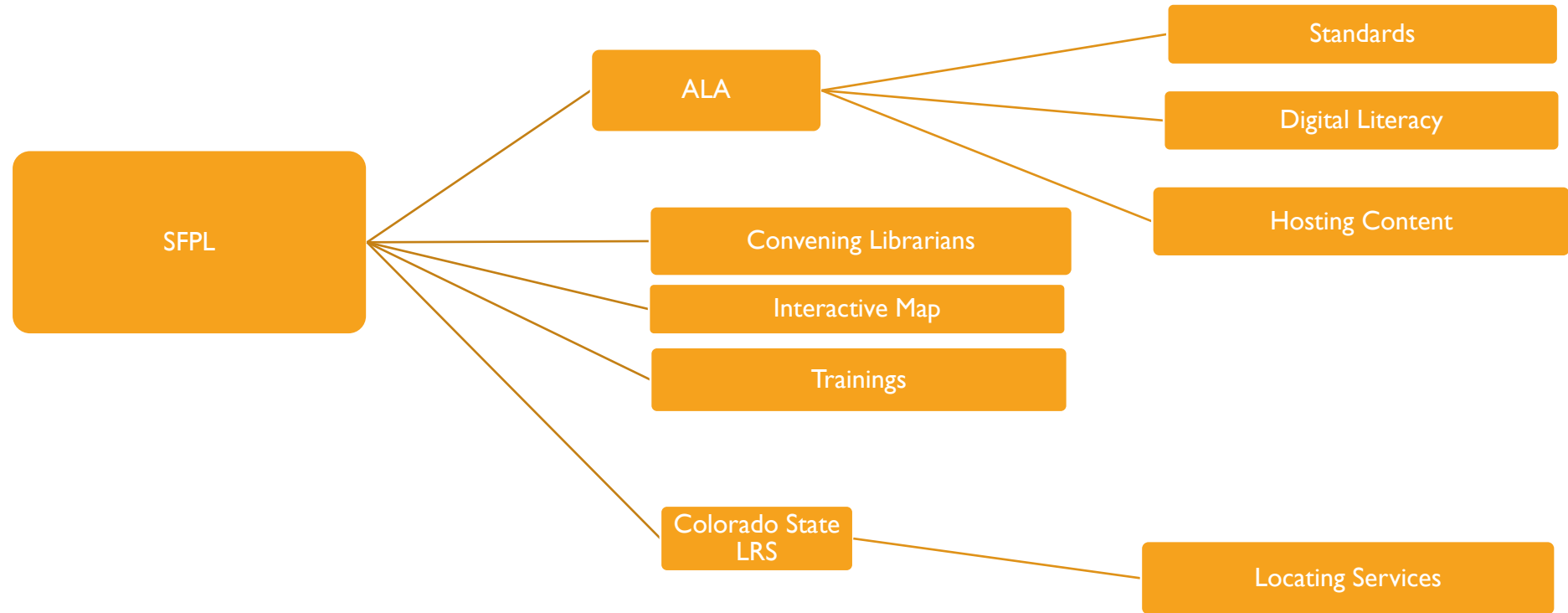
- Limited library and information services available to incarcerated people, primarily impacts Black, Indigenous, and people of color
- Extremely limited information available about library services for incarcerated people
- Growing interest in the field, few available models for library service
- Need both administrative- and association-level and grassroots models
- Supports librarians, incarcerated people, and their communities



ACTIVITIES & GOALS

- Research existing library services for people who are incarcerated
- Create publicly searchable GIS map of available library services for incarcerated people
- Create year-long virtual training series on library services and incarceration
- Work with advisory committee composed of people impacted by incarceration to identify service needs
- Support ALA to revise existing ALA Standards for library services to people who are incarcerated
- Support ALA to develop digital literacy library programming focused on reentry

ROLES



PERSONNEL

SFPL	ALA	LRS
Senior & Grant Administrative Analyst	Standards <ul style="list-style-type: none">• Project manager• Drafting team	Staff time dedicated to research, publications, and presentations
Jail and Reentry Services <ul style="list-style-type: none">• Existing staff (Jeanie Austin and Rachel Kinnon)• 3630 Librarian I• Administrative & GIS Analyst	Digital Literacy Programming <ul style="list-style-type: none">• Year one: Research fellow• Year two: Four prototype sites	

BUDGET

SFPL	ALA	LRS
Year one: \$748,000	Year one: \$417,000	Year one: \$8,252
Year two: \$664,776	Year two: \$154,800	Year two: \$7,172



IMPACT OF PROJECT

- Increase services for local library patrons impacted by incarceration (including after sentencing and in the process of reentry)
- Strengthen connections between local and national grassroots support networks
- Improve library and information access for incarcerated people nationwide
- Provide nationwide support and training for librarians
- Create data-driven reports that identify models that work

QUESTIONS?