

AB 0695
 NEW CALIFORNIA PACIFIC MEDICAL CENTER
 CATHEDRAL HILL HOSPITAL

*DRIVEWAY LOCATIONS AND WIDTHS ARE APPROXIMATE.

LEGEND

- (E) EXISTING FEATURE DIMENSION
- P.O.B. POINT OF BEGINNING (SEE SHEET 6 FOR MAP CLOSURE INFO)
- PROPOSED NEW CURB LINE
- EXISTING CURB LINE TO REMAIN
- EXISTING CURB LINE TO BE REMOVED
- PROPERTY LINE

REFERENCES:

APPROVED:

Bruce R. Storrs
 BRUCE R. STORRS
 CITY & COUNTY SURVEYOR

3/30/12
 DATE

BY

DATE

DRW

CK

APP

CITY AND COUNTY OF SAN FRANCISCO
 DEPARTMENT OF PUBLIC WORKS

OFFICIAL SIDEWALK CHANGE ON THE SOUTH SIDE OF POST STREET BETWEEN
 FRANKLIN STREET AND VAN NESS AVENUE

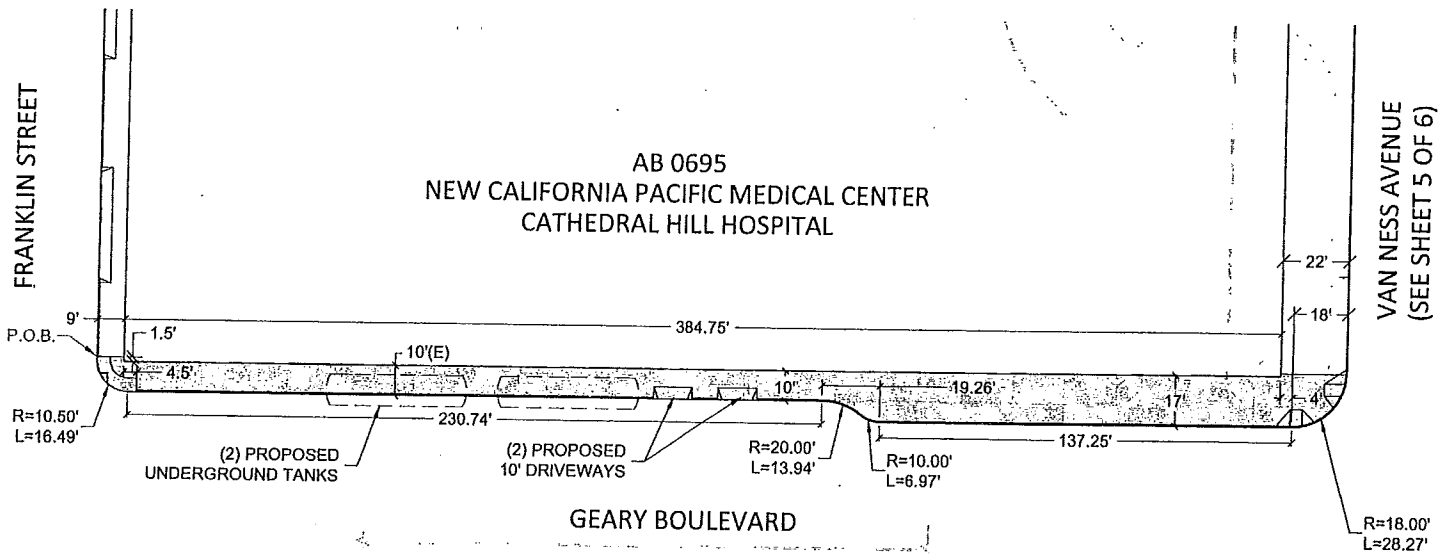
SCALE:
 1" = 40'

SHEET
 1 OF 6

FILE

Q-20-699

CHANGE



*DRIVEWAY LOCATIONS AND WIDTHS ARE APPROXIMATE.

LEGEND

- (E) EXISTING FEATURE DIMENSION
- P.O.B. POINT OF BEGINNING (SEE SHEET 6 FOR MAP CLOSURE INFO)
- PROPOSED NEW CURB LINE
- - - EXISTING CURB LINE TO REMAIN
- - - EXISTING CURB LINE TO BE REMOVED
- PROPERTY LINE

REFERENCES:

APPROVED:

Bruce R. Storrs
 BRUCE R. STORRS
 CITY & COUNTY SURVEYOR

3/30/12
 DATE

BY

DATE

DRW

CK

APP

CITY AND COUNTY OF SAN FRANCISCO
 DEPARTMENT OF PUBLIC WORKS

OFFICIAL SIDEWALK CHANGE ON THE NORTH SIDE OF GEARY BOULEVARD BETWEEN
 FRANKLIN STREET AND VAN NESS AVENUE

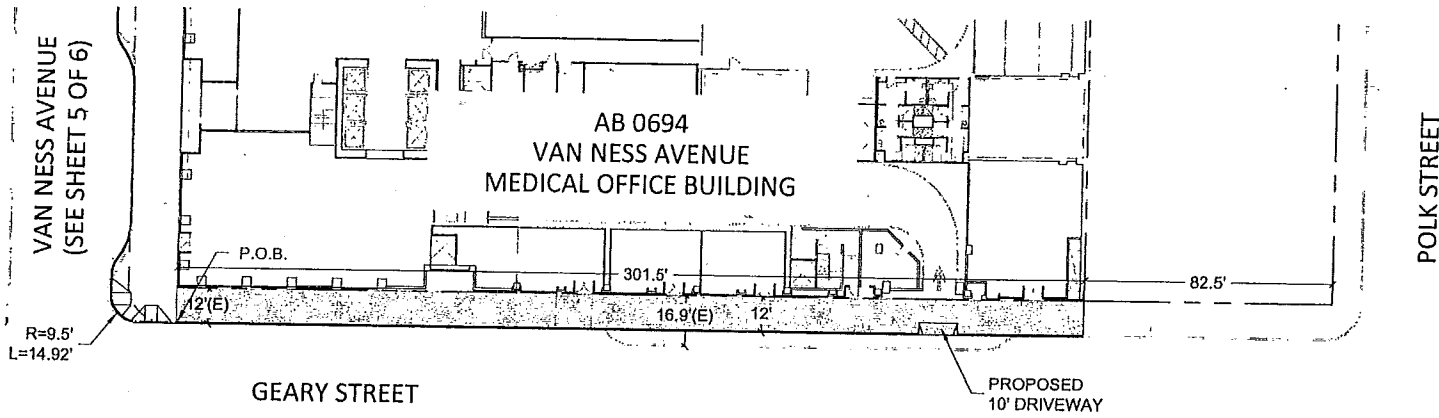
SCALE:
 1" : 40'

-SHEET
 2 OF 6

FILE

Q-20-699

CHANGE



*DRIVEWAY LOCATIONS AND WIDTHS ARE APPROXIMATE.

LEGEND

- (E) EXISTING FEATURE DIMENSION
- P.O.B. POINT OF BEGINNING (SEE SHEET 6 FOR MAP CLOSURE INFO)
- PROPOSED NEW CURB LINE
- - - EXISTING CURB LINE TO REMAIN
- EXISTING CURB LINE TO BE REMOVED
- - - **EXISTING LEGISLATED CURB LINE
- - - EXISTING LIP OF GUTTER LINE
- PROPERTY LINE

REFERENCES:

APPROVED:

Bruce R. Storrs
BRUCE R. STORRS
CITY & COUNTY SURVEYOR

3/30/12
DATE

BY

DATE

DRW

CK

APP

CITY AND COUNTY OF SAN FRANCISCO
DEPARTMENT OF PUBLIC WORKS

OFFICIAL SIDEWALK CHANGE ON THE NORTH SIDE OF GEARY STREET BETWEEN VAN
NESS AVENUE AND POLK STREET

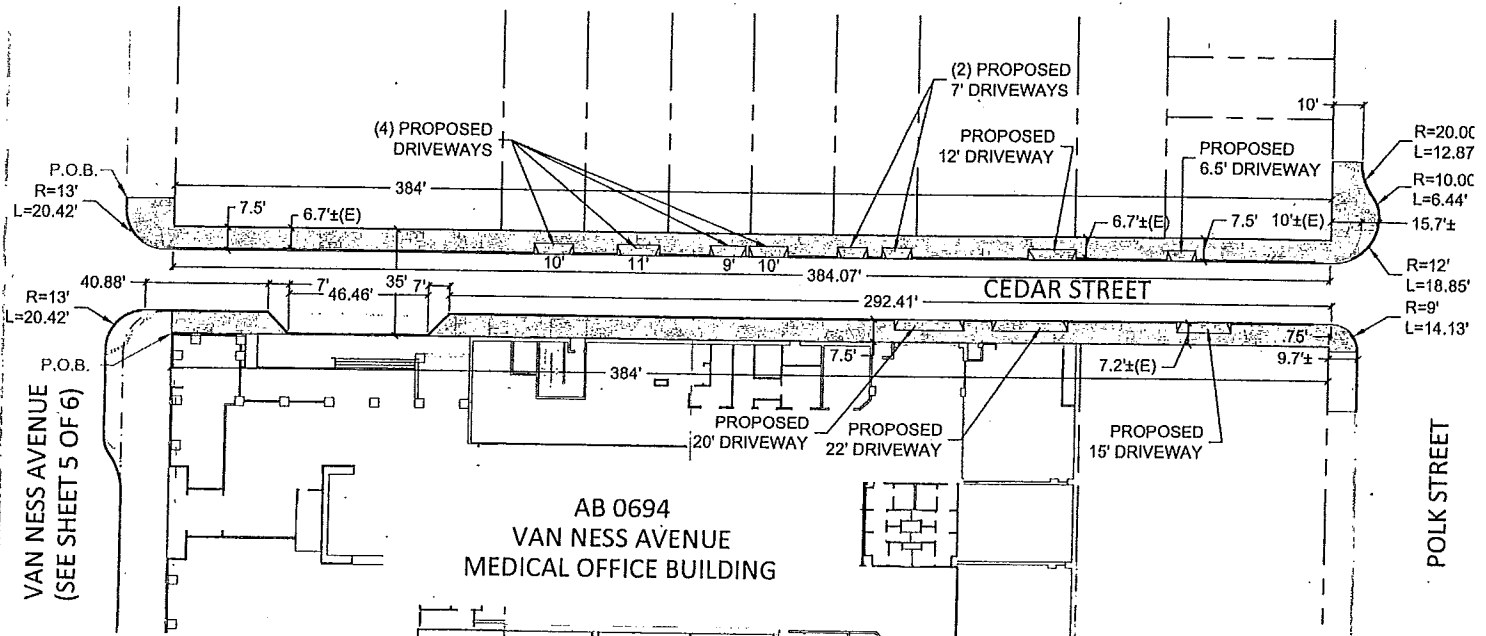
SCALE:
1" : 40'

SHEET
3 OF 6

FILE

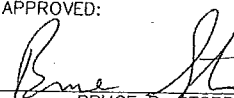
Q-20-699

CHANGE



*DRIVEWAY LOCATIONS AND WIDTHS ARE APPROXIMATE.

- LEGEND**
- (E) EXISTING FEATURE DIMENSION
 - P.O.B. POINT OF BEGINING (SEE SHEET 6 FOR MAP CLOSURE INFO)
 - PROPOSED NEW CURB LINE
 - - - EXISTING CURB LINE TO REMAIN
 - - - EXISTING CURB LINE TO BE REMOVED
 - - - **EXISTING LEGISLATED CURB LINE
 - - - EXISTING LIP OF GUTTER LINE
 - - - PROPERTY LINE

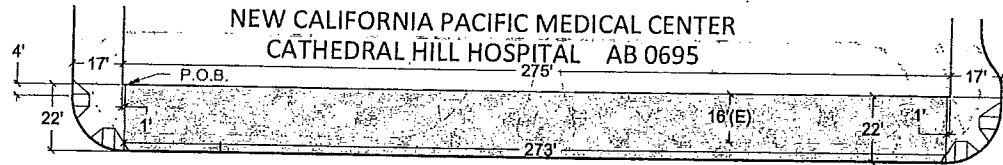
REFERENCES:	APPROVED:	BY	DATE	CITY AND COUNTY OF SAN FRANCISCO				
	 BRUCE R. STORRS CITY & COUNTY SURVEYOR			3/2/12 DATE	DEPARTMENT OF PUBLIC WORKS			
					OFFICIAL SIDEWALK CHANGE ON THE NORTH AND SOUTH SIDE OF CEDAR STREET BETWEEN VAN NESS AVENUE AND POLK STREET			
		DRW		SCALE: 1" : 40'	SHEET 4 OF 6	FILE Q-20-699	CHANGE	
		CK						
		APP						



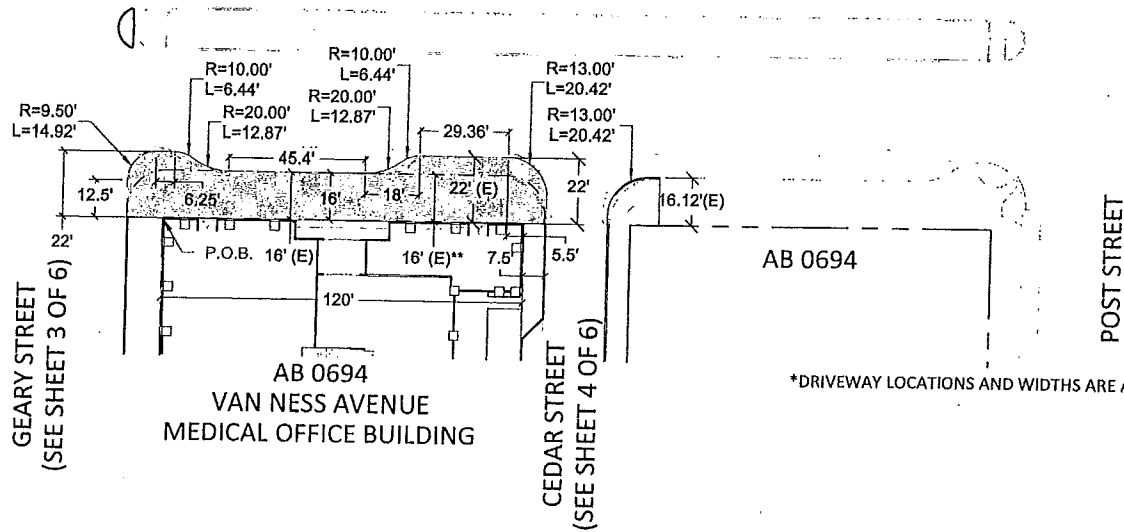
GEARY BOULEVARD
(SEE SHEET 2 OF 6)

POST STREET
(SEE SHEET 1 OF 6)

NEW CALIFORNIA PACIFIC MEDICAL CENTER
CATHEDRAL HILL HOSPITAL AB 0695



VAN NESS AVENUE



POST STREET
(SEE SHEET 4 OF 6)

AB 0694

AB 0694
VAN NESS AVENUE
MEDICAL OFFICE BUILDING

*DRIVEWAY LOCATIONS AND WIDTHS ARE APPROXIMATE.

LEGEND

- (E) EXISTING FEATURE DIMENSION
- P.O.B. POINT OF BEGINNING (SEE SHEET 6 FOR MAP CLOSURE INFO)
- PROPOSED NEW CURB LINE
- EXISTING CURB LINE TO REMAIN
- - - EXISTING CURB LINE TO BE REMOVED
- - - **EXISTING LEGISLATED CURB LINE
- - - EXISTING LIP OF GUTTER LINE
- - - PROPERTY LINE

REFERENCES:

APPROVED:

Bruce R. Storrs
BRUCE R. STORRS
CITY & COUNTY SURVEYOR

3/30/12
DATE

BY DATE

DRW	
CK	
APP	

CITY AND COUNTY OF SAN FRANCISCO
DEPARTMENT OF PUBLIC WORKS

OFFICIAL SIDEWALK CHANGE ON THE EAST AND WEST SIDE OF VAN NESS AVENUE
BETWEEN GEARY AND POST STREET

SCALE:
1" : 40'

SHEET
5 OF 6

FILE
Q-20-699

CHANGE

PROJECT: 105069_Sidewalks

DESCRIPTION: Cathedral Hill and Van Ness

MAP-CHECK CLOSURE FOR: 01 POST STREET SIDEWALK SOUTH

TOTAL # OF COURSES: 14

COURSE #1 DELTA: 90°00'00" RADIUS: 23.00' ARC LENGTH: 36.13'
 COURSE #2 BEARING: N 90°00'00" E LENGTH: 216.18'
 COURSE #3 DELTA: 39°56'40" RADIUS: 10.00' ARC LENGTH: 6.97'
 COURSE #4 DELTA: 39°56'40" RADIUS: 20.00' ARC LENGTH: 13.94'
 COURSE #5 BEARING: S 90°00'00" E LENGTH: 112.98'
 COURSE #6 DELTA: 39°56'40" RADIUS: 20.00' ARC LENGTH: 13.94'
 COURSE #7 DELTA: 39°56'40" RADIUS: 10.00' ARC LENGTH: 6.97'
 COURSE #8 BEARING: N 90°00'00" E LENGTH: 7.07'
 COURSE #9 DELTA: 89°55'00" RADIUS: 18.01' ARC LENGTH: 28.26'
 COURSE #10 BEARING: S 90°00'00" W LENGTH: 22.00'
 COURSE #11 BEARING: N 00°00'00" E LENGTH: 1.00'
 COURSE #12 BEARING: N 90°00'00" W LENGTH: 384.75'
 COURSE #13 BEARING: S 00°00'00" W LENGTH: 6.00'
 COURSE #14 BEARING: N 90°00'00" W LENGTH: 9.00'
 PERIMETER: 865.19' AREA: 6018 SF, 0.14 AC
 ERROR OF CLOSURE: S 46°09'23" E 0.009'
 PRECISION: 1 IN 94978

MAP-CHECK CLOSURE FOR: 02 GEARY BOULEVARD SIDEWALK NORTH

TOTAL # OF COURSES: 12

COURSE #1 BEARING: S 90°00'00" E LENGTH: 9.00'
 COURSE #2 BEARING: S 00°00'00" W LENGTH: 1.50'
 COURSE #3 BEARING: N 90°00'00" E LENGTH: 384.75'
 COURSE #4 BEARING: N 00°00'00" E LENGTH: 1.00'
 COURSE #5 BEARING: N 90°00'00" E LENGTH: 22.00'
 COURSE #6 DELTA: 90°00'00" RADIUS: 18.00' ARC LENGTH: 28.27'
 COURSE #7 BEARING: N 90°00'00" W LENGTH: 137.25'
 COURSE #8 DELTA: 39°56'40" RADIUS: 10.00' ARC LENGTH: 6.97'
 COURSE #9 DELTA: 39°56'40" RADIUS: 20.00' ARC LENGTH: 13.94'
 COURSE #10 BEARING: S 90°00'00" W LENGTH: 230.74'
 COURSE #11 DELTA: 89°59'14" RADIUS: 10.50' ARC LENGTH: 16.48'
 COURSE #12 BEARING: N 00°00'00" E LENGTH: 1.00'
 PERIMETER: 852.91' AREA: 5246 SF, 0.12 AC
 ERROR OF CLOSURE: N 17°22'17" E 0.004'
 PRECISION: 1 IN 217649

MAP-CHECK CLOSURE FOR: 03 GEARY STREET SIDEWALK NORTH

TOTAL # OF COURSES: 4

COURSE #1 BEARING: N 00°00'00" E LENGTH: 12.00'
 COURSE #2 BEARING: N 90°00'00" E LENGTH: 301.50'
 COURSE #3 BEARING: S 00°00'00" W LENGTH: 12.00'
 COURSE #4 BEARING: S 90°00'00" W LENGTH: 301.50'
 PERIMETER: 627.00' AREA: 3618 SF, 0.08 AC
 ERROR OF CLOSURE: S 00°00'00" W 0.000'
 PRECISION: 1 IN 1000000

MAP-CHECK CLOSURE FOR: 04 CEDAR STREET SIDEWALK NORTH

TOTAL # OF COURSES: 12

COURSE #1 BEARING: N 90°00'00" E LENGTH: 16.12'
 COURSE #2 BEARING: S 00°00'00" W LENGTH: 9.23'
 COURSE #3 BEARING: N 90°00'00" E LENGTH: 384.00'
 COURSE #4 BEARING: N 00°00'00" E LENGTH: 26.03'
 COURSE #5 BEARING: N 90°00'00" E LENGTH: 9.95'
 COURSE #6 DELTA: 36°52'12" RADIUS: 20.00' ARC LENGTH: 12.87'
 COURSE #7 DELTA: 36°52'12" RADIUS: 10.00' ARC LENGTH: 6.44'
 COURSE #8 BEARING: S 00°00'00" W LENGTH: 0.73'
 COURSE #9 DELTA: 90°00'00" RADIUS: 15.00' ARC LENGTH: 23.56'
 COURSE #10 BEARING: N 90°00'00" W LENGTH: 388.06'
 COURSE #11 DELTA: 90°00'27" RADIUS: 13.00' ARC LENGTH: 20.42'
 COURSE #12 BEARING: N 00°00'27" E LENGTH: 3.93'
 PERIMETER: 901.34' AREA: 3622 SF, 0.08 AC
 ERROR OF CLOSURE: S 40°29'29" W 0.014'
 PRECISION: 1 IN 66357

MAP-CHECK CLOSURE FOR: 05 CEDAR STREET SIDEWALK SOUTH

TOTAL # OF COURSES: 10

COURSE #1 BEARING: N 00°00'00" E LENGTH: 7.50'
 COURSE #2 BEARING: N 90°00'00" E LENGTH: 31.88'
 COURSE #3 BEARING: S 45°00'00" E LENGTH: 9.90'
 COURSE #4 BEARING: N 90°00'00" E LENGTH: 46.46'
 COURSE #5 BEARING: N 45°00'00" E LENGTH: 9.90'
 COURSE #6 BEARING: N 90°00'00" E LENGTH: 292.41'
 COURSE #7 DELTA: 89°56'06" RADIUS: 9.00' ARC LENGTH: 14.13'
 COURSE #8 BEARING: N 90°00'00" W LENGTH: 9.75'
 COURSE #9 BEARING: N 00°00'00" E LENGTH: 1.49'
 COURSE #10 BEARING: N 90°00'00" W LENGTH: 384.00'
 PERIMETER: 807.42' AREA: 2576 SF, 0.06 AC
 ERROR OF CLOSURE: S 17°12'58" W 0.001'
 PRECISION: 1 IN 1086259

MAP-CHECK CLOSURE FOR: 06 VAN NESS AVENUE SIDEWALK WEST

TOTAL # OF COURSES: 4

COURSE #1 BEARING: N 00°00'00" E LENGTH: 273.00'
 COURSE #2 BEARING: N 90°00'00" E LENGTH: 22.00'
 COURSE #3 BEARING: S 00°00'00" W LENGTH: 273.00'
 COURSE #4 BEARING: S 90°00'00" W LENGTH: 22.00'
 PERIMETER: 590.00' AREA: 6006 SF, 0.14 AC
 ERROR OF CLOSURE: S 00°00'00" W 0.000'
 PRECISION: 1 IN 1000000

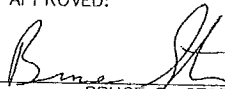
MAP-CHECK CLOSURE FOR: 07 VAN NESS AVENUE SIDEWALK EAST

TOTAL # OF COURSES: 14

COURSE #1 BEARING: S 00°00'00" W LENGTH: 12.00'
 COURSE #2 BEARING: N 90°00'00" W LENGTH: 12.50'
 COURSE #3 DELTA: 90°00'00" RADIUS: 9.50' ARC LENGTH: 14.92'
 COURSE #4 BEARING: N 00°00'00" E LENGTH: 6.25'
 COURSE #5 DELTA: 36°52'12" RADIUS: 10.00' ARC LENGTH: 6.44'
 COURSE #6 DELTA: 36°52'12" RADIUS: 20.00' ARC LENGTH: 12.87'
 COURSE #7 BEARING: N 00°00'00" E LENGTH: 45.40'
 COURSE #8 DELTA: 36°52'12" RADIUS: 20.00' ARC LENGTH: 12.87'
 COURSE #9 DELTA: 36°52'12" RADIUS: 10.00' ARC LENGTH: 6.44'
 COURSE #10 BEARING: N 00°00'00" E LENGTH: 29.36'
 COURSE #11 DELTA: 90°00'00" RADIUS: 13.00' ARC LENGTH: 20.42'
 COURSE #12 BEARING: N 90°00'00" E LENGTH: 9.00'
 COURSE #13 BEARING: S 00°00'00" W LENGTH: 7.50'
 COURSE #14 BEARING: S 00°00'00" W LENGTH: 120.00'
 PERIMETER: 315.97' AREA: 2620 SF, 0.06 AC
 ERROR OF CLOSURE: S 65°15'23" E 0.008'
 PRECISION: 1 IN 41569

REFERENCES:

APPROVED:


 BRUCE R. STORRS
 CITY & COUNTY SURVEYOR

3/31/12
 DATE

BY

DATE

DRW

CK

APP

CITY AND COUNTY OF SAN FRANCISCO
 DEPARTMENT OF PUBLIC WORKS

SIDEWALK LEGISLATION -- SIDEWALK MAP CHECK CLOSURES

SCALE:
1" : 40'

SHEET
6 OF 6

FILE

Q-20-699

CHANGE