



**Hetch Hetchy  
Regional Water System**  
Services of the San Francisco Public Utilities Commission

---

# **Hetch Hetchy Water and Power (HHWP) Road Emergency Repair Project**

**Budget and Finance Committee**

**July 12, 2023**

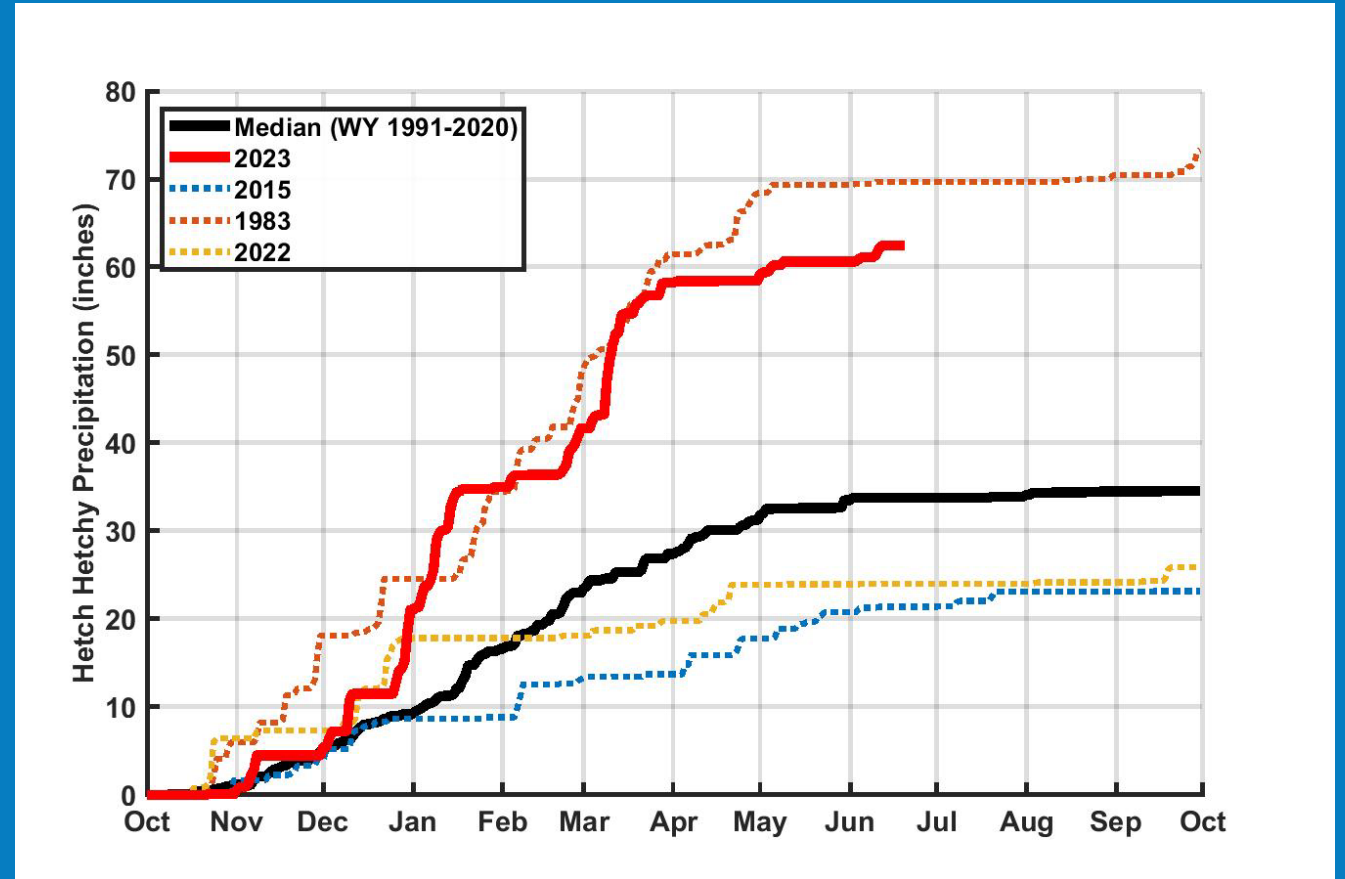
**Margaret Hannaford, Hetch Hetchy Water Division Manager**

**San Francisco Public Utilities Commission**



# HHWP Road Emergency Repair Project

- November 2022 through March 2023, the gauge at Hetch Hetchy Reservoir recorded about 58 inches of precipitation (160% of what we normally expect in a 12 month period).
- Saturated soils and a series of atmospheric rivers events resulted in countless rockslides, multiple road failures, creating a risk to both employee and public safety and access issues to HHWP Project facilities.





# HHWP Road Emergency Repair Project

- HHWP Project assets stretch from Hetch Hetchy Reservoir in Yosemite National Park to Newark.
- Identified damage on our access roads to our facilities, from Hetch Hetchy Road down to Livermore Valley.

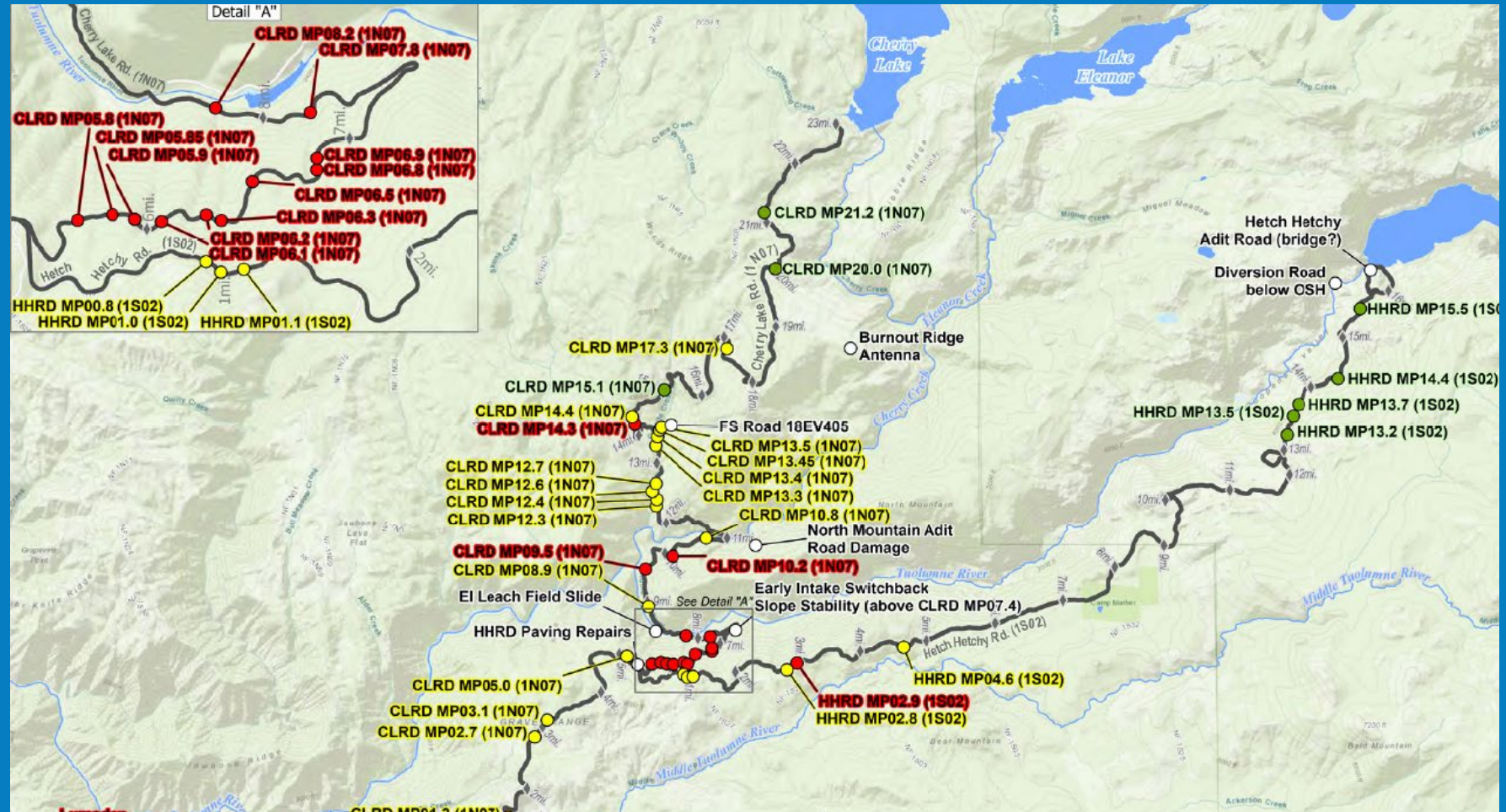






# HHWP Road Emergency Repair Project

- The majority of storm damage is on Cherry Lake and Hetch Hetchy roads
- Significant damage identified by red markers
- Contract HH-1014E to remediate these sites
- The estimated cost to remediate these sites, marked in red, is \$20 million







# HHWP Road Emergency Repair Project



- Hetch Hetchy Road (left)
- Above Cherry Lake Road (below)





# HHWP Road Emergency Repair Project

- On April 20, 2023, SFPUC issued a Request for Qualifications to identify qualified firms to perform the road repairs through an emergency contract
- SFPUC determined that six respondents were qualified and issued a Request for Bids to these respondents
- Two of the six firms submitted bids

Proposer	Bid Amount
Sierra Mountain Construction, Inc.	\$11,541,525
Wilson Utility Construction Company	\$17,352,792
Engineer's Estimate	\$14,000,000



# HHWP Road Emergency Repair Project

Contract	Contractor	Service	New Chapter 6.60	Existing Contracts
PRO.167.A	KH-Terra	Professional Services: Design		\$1.60 Million
PRO.167.B	Kleinfelder & Lee	Professional Services: Design		\$0.86 Million
PRO.097.A	AECOM-EMS	Professional Services: Design		\$0.63 Million
PRO.097.C	Avila & Associates	Professional Services: Design		\$0.07 Million
CS-258.C	URS	Professional Services: Design		\$0.25 Million
JOC 92	Sierra Mountain Construction, Inc. (SMCI)	Construction (Job Order Contract)		\$5.00 Million
<b>HH-1014E</b>	<b>SMCI</b>	<b>Construction (Emergency Contract)</b>	<b>\$11.5 Million</b>	
		<b>TBD</b>	<b>\$8.5 Million</b>	
		<b>Total</b>	<b>\$20 Million</b>	<b>\$8.4 Million</b>

# HHWP Road Emergency Repair Project

- HH-1014E, Sierra Mountain Construction Inc. emergency contract amount is \$11,541,525
- We have estimated contingencies at approximately \$5.5 to \$8.5 million
- Emergency declaration is not to exceed \$20,000,000

Scope	Amount
SMCI- Emergency Contract (HH-1014E)	\$11.5 Million
Additional Site(s) Work*	\$1.7 Million
Pavement Repairs (Due to Construction Equipment)**	\$4.4 Million
Contingency (Due to Partial Design at time of Bid)	\$2.4 Million
<b>Total</b>	<b>\$20 Million</b>

\* Site on Hetch Hetchy Road. Current estimate at \$1.7 million.

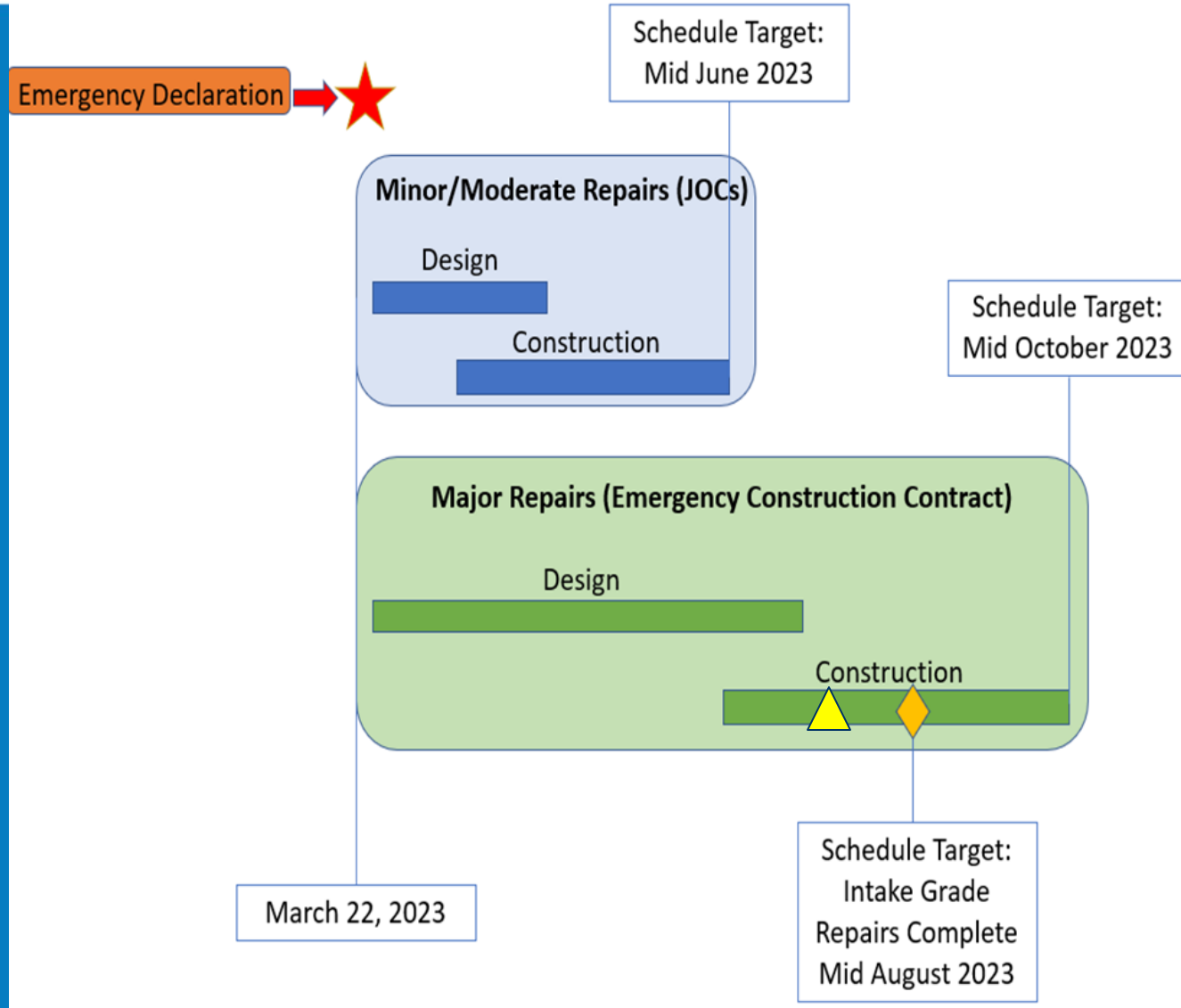
\*\* Cut, remove, dispose and replace about 4 miles of pavement (about 10% of total paved roads). Estimated at \$4.4 million.





# HHWP Road Emergency Repair Project

- Timeline





# HHWP Road Emergency Repair Project

---

- Questions?