

File # 110048
Received in Committee 5/18/16
fn



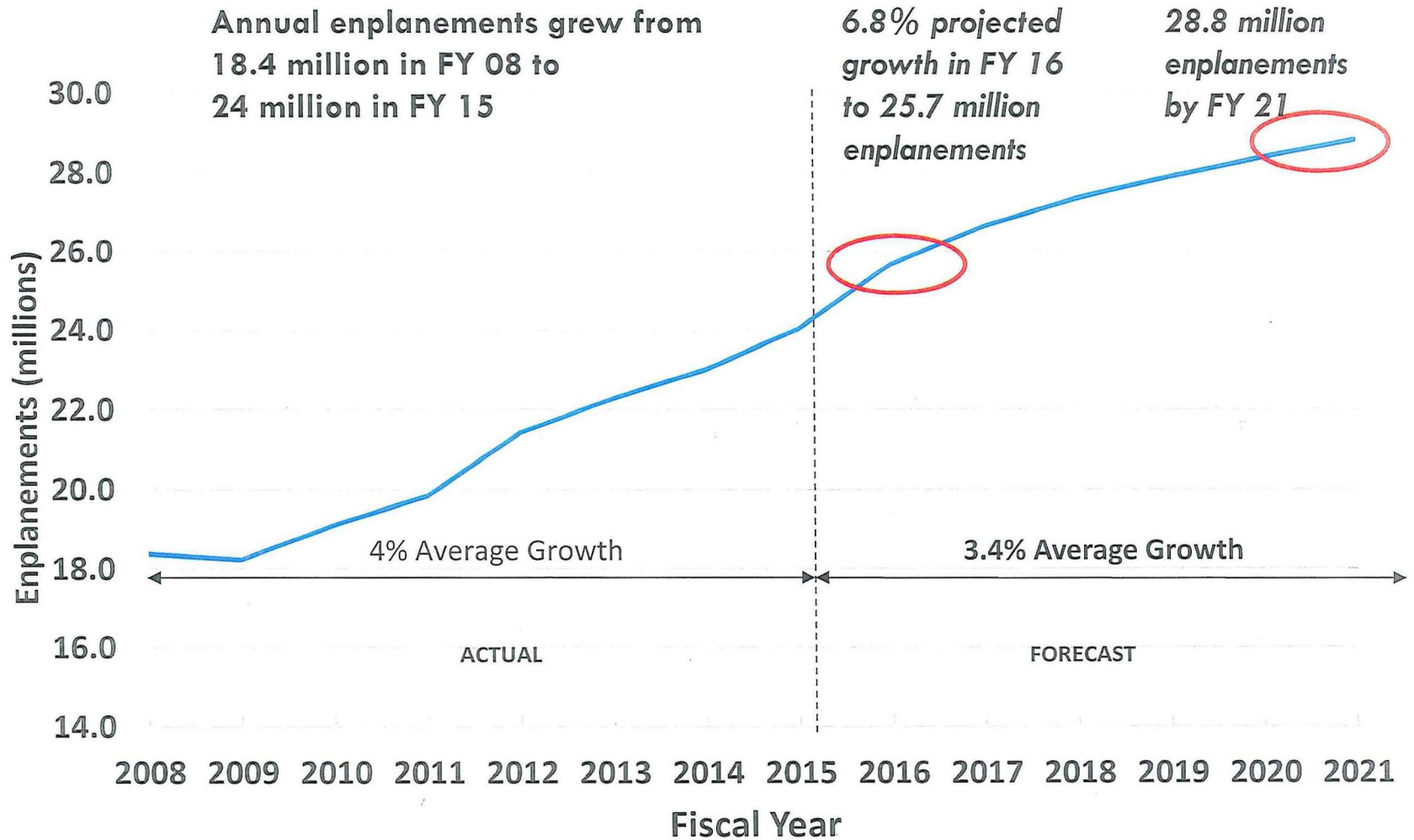
SAN FRANCISCO INTERNATIONAL AIRPORT

Mission Statement

**We provide an exceptional airport
in service to our communities**

May 18, 2016

Record Breaking Passenger Traffic Growth



Source: LeighFisher, Forecast for Financial Planning, February 19, 2016



Budget Has Not Kept Pace with Growth

- Fastest growing US airport compared to peers 2007 – 2015
- Highest international traffic growth of any US airport 2015
- Increased demands on Airport services
- Budget not aligned with traffic growth;
Since FY 07/08:
 - Enplanements increased 40%
 - Budgeted positions increased 13%



FY 16/17 & FY 17/18 Budget

	FY 15/16	Proposed Budget	
		FY 16/17	FY2017/18
Budget	\$970.8	\$1,014.8	\$1,055.1
<i>% Change vs. Prior FY</i>	3.2%	4.5%	4.0%
Total Positions	1,733	1,828	1,888
Operating Positions	1,529	1,6028	1,637
Project & Overhead Positions	204	226	251
<i>Total Position Change</i>	2.1%	5.5%	3.3%
Total Passengers per Position	29,617	29,130	28,964
Airport Overtime	\$2.2	\$2.3	\$2.3
Annual Service Payment	\$42.0	\$43.6	\$44.5

Budget Objectives

- ➔ Meet increased passenger demands
- ➔ Enhance safety and security
- ➔ Support CIP
- ➔ Address curbside congestion
- ➔ Enhance Sustainability

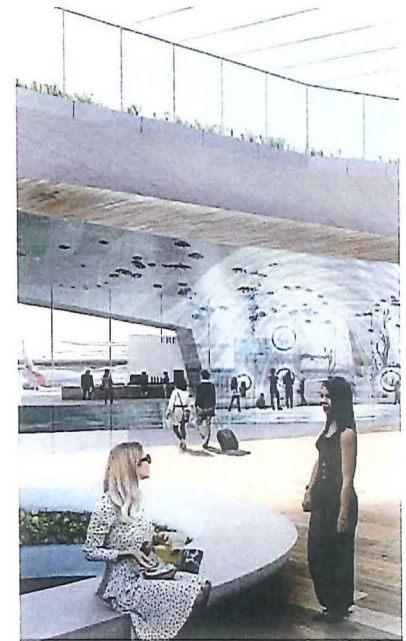
Capital Improvement Plan (CIP)

Capital Plan currently being updated

- Approximately \$6.0 billion
- Airport Commission Review June 7, 2016

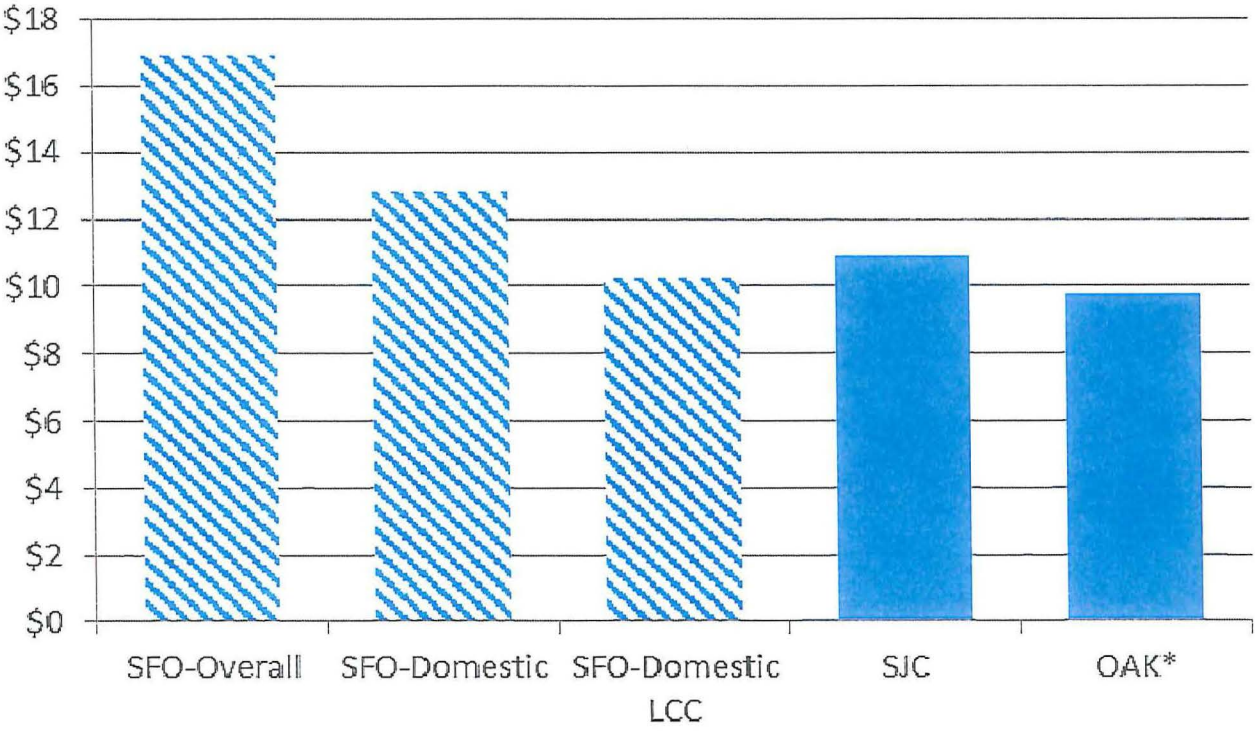
Major Capital Projects

- Terminal 1 Redevelopment Program
- Terminal 3 Renovation Program
- On-Airport Hotel
- Gate Capacity Improvement Project
- Security Infrastructure Improvements
- Air Train Extension
- New Long Term Parking Garage
- Technology Upgrades & Enhancements



Current Cost Per Enplanement (CPE) Comparison

Estimated FY2017 CPE
Bay Area Airports



Workforce Development

Internships: SFO staff collaborates with community based organizations in City's most under-employed areas

→ Internship programs include:

- Youth Works
- SFO High School Interns
- Project Pull

→ 134 interns hired in FY14/15; 113 interns hired to date in FY15/16

Local Hire: SFO exceeded the City's 30% Local Hire requirement in FY 14/15; on track to exceed goal in FY 15/16

Local Hire Construction Hours at SFO			
Year	Total Work Hours	Local Hire Work Hours	Percentage Local Hire
FY 14-15	720,000	253,000	35%
FY 15-16 YTD	315,197	118,845	38%

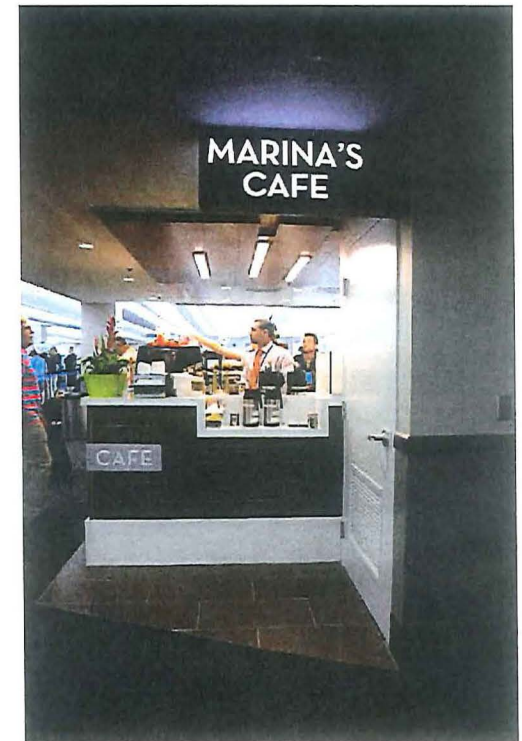
Benefiting Local Business

Small Business Affairs and External Outreach

- Annual Small Business Participation Goal: 30%
- FY 14/15 Contractors
 - Prime Contractors - 39% Local Business Enterprise (LBE)
 - Subcontractors - 57% LBE or Disadvantaged Business Enterprise

Concessions

- 74% of concession leases had owners headquartered in San Francisco and the Bay Area in FY 2014/15
- 71% of sales (\$234 million) earned by San Francisco/Bay Area owners
- 35% of retail leases and 52% of food and beverage leases held by small businesses



2015 & 2016 Recent Awards

- Best Airport in the Americas, *Frequent Business Traveler*
- Best airport staff in North America & 4th Best Airport in World in 40-50 million passenger class, *SkyTrax*
- Best Concession Management Team, *Airport Revenue News*
- Gold & Silver Magellan Awards for Excellence, *Travel Weekly*
- Top US Engineering Project for Traffic Control Tower, *American Council of Engineering Companies*
- “Best of California” Award for App-Based Commercial Transport System
- W3 Awards Silver Winner for SFO’s Visually Impaired Navigation App
- Gold Level Achievement Award for Fit Friendly Worksite Program, *American Heart Association*
- “Excellence in Disclosure” Award, Nat’l Federation of Municipal Analysts

