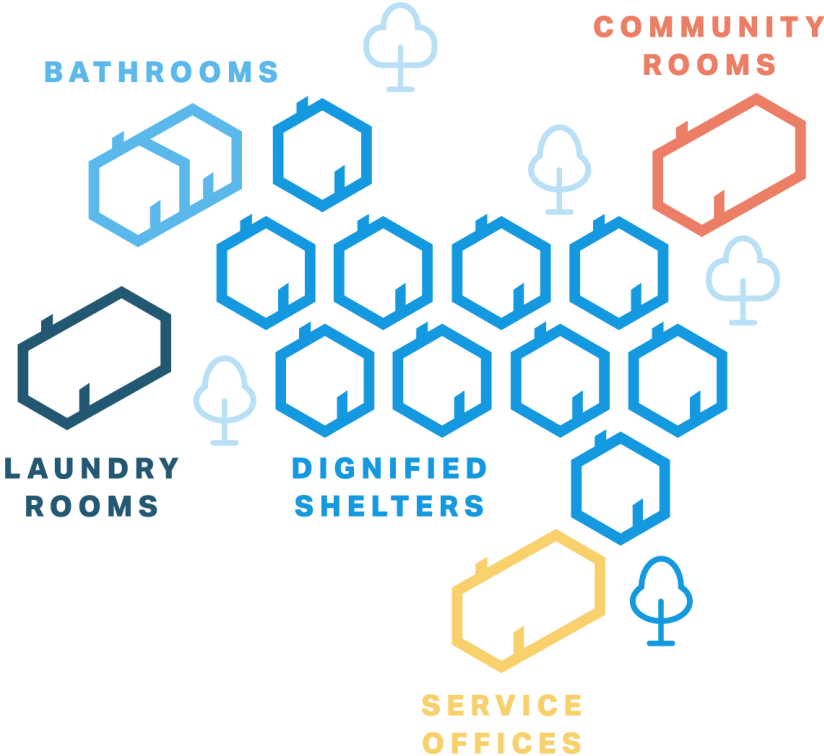




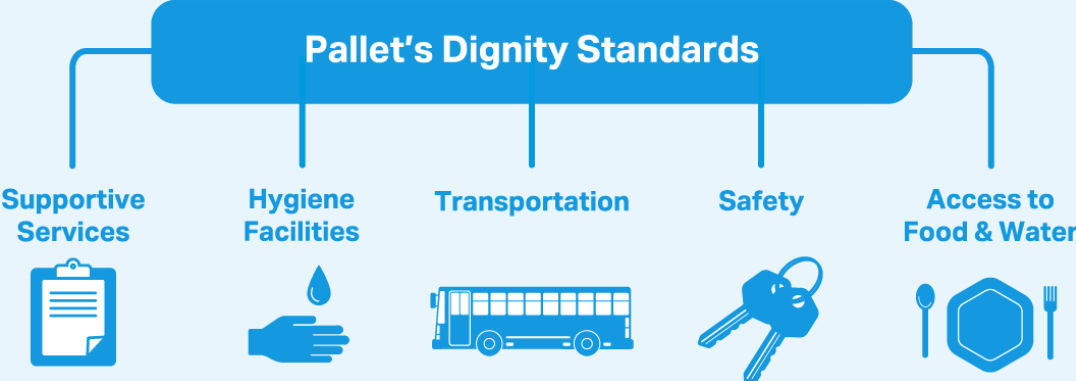




# VILLAGE MODEL



# INHERENT AND ABSOLUTE DIGNITY



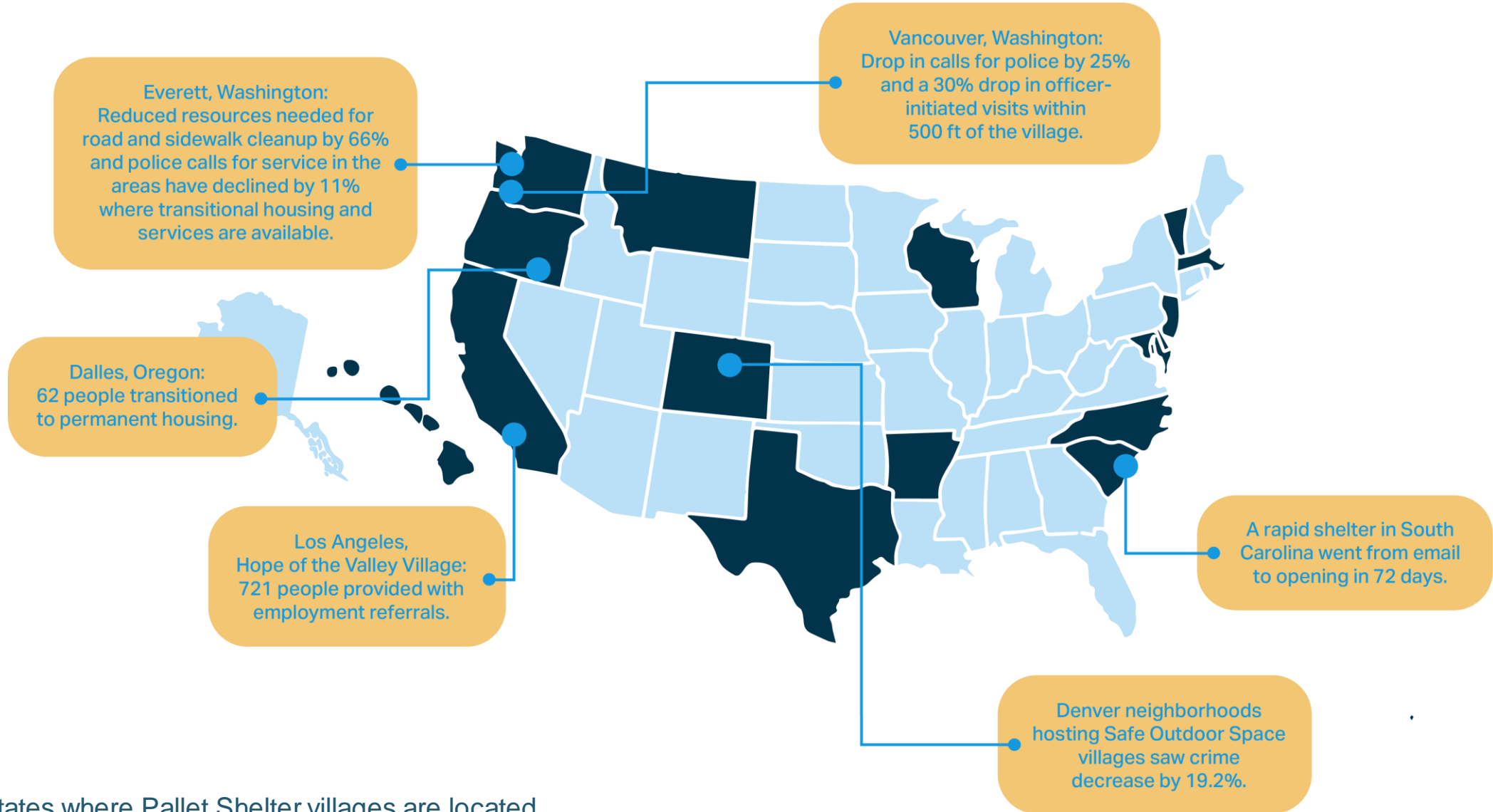




# SLIDE 6: MAP/STATS

## OPTION 2 - HIDE OTHER VERSIONS

### VILLAGE STATS



■ States where Pallet Shelter villages are located

# SONOMA COUNTY, CA

## Featured Project

**SIZE:**  
60 Shelters

**POPULATION SERVED:**  
Local unhoused neighbors

**FUNDING:**  
County Emergency Funds

**IMPACT DATA POINTS:**

- Assembled in 10 days
- Pet friendly
- Shuttle service

“ I can't believe that we were able to basically complete an entire tiny community over the course of two weeks. People are happy to be there.”

LYNDA HOPKINS, SONOMA COUNTY  
BOARD OF SUPERVISORS





# Baldwin Park, CA

## Featured Project

### SIZE:

25 shelters

### POPULATION SERVED:

Local unhoused neighbors

### FUNDING:

San Gabriel Valley Regional Housing Trust

### Highlights:

- Built less than 30 days including permanent infrastructure
- Includes, shelter, offices, laundry, hygiene units, dog run, outdoor communal space, security office
- All in cost for construction was \$530,000, less than the cost to construct 1 single family unit in LA County\
- Partnered with DPW to keep site costs down



Tiny homes provide the safety and privacy that is lacking in more traditional congregate shelters while helping residents transition to permanent housing.”

EMMANUEL J. ESTRADA,  
Mayor of Baldwin Park



# LOS ANGELES, CA

## Featured Project

**SIZE:**  
1,317 Beds over 13 sites

**POPULATION SERVED:**  
Local unhoused neighbors

**FUNDING:**  
HHAP, CARES, ARPA, General

- IMPACT DATA POINTS:**
- Supported 465 people through substance abuse
  - 599 people with mental health support
  - 721 provided with employment referral

“ People in the neighborhood see less homeless, less trash, less crime, fewer drug users roaming around,” he added. “I think these villages should spread across the country like Starbucks-be in every community.”

ROWAN VANSLEVE, PRESIDENT OF  
HOPE AND MISSION



# SAN JOSE, CA

## Featured Project

**SIZE:**  
25 Shelters

**POPULATION SERVED:**  
Families of 3-4 with children

**FUNDING:**  
County funds

**IMPACT DATA POINTS:**

- Assembled in 7 days
- Family site
- 100% solar powered with battery and backup propane generators, saving the county \$600,000 per year

“Pallet is truly a social purpose company, driven on every level by its mission to house the unsheltered, and this partnership serves as a testament to their willingness to go above and beyond to solve for the pressing needs of the unhoused in our communities”.

DALAN ANGELENO,  
SALES AND PARTNERSHIP AT BOXPOWER



A row of portable storage units, some white and some red, under a bright sun. A blue banner with the word "QUESTIONS?" is overlaid on the image. The units have a "Pallet" logo on the white doors. The scene is outdoors with trees in the background.

**QUESTIONS?**

