

# **Pit Stop Pilot Program Expansion**

Controller's Office

Geospatial Analysis of Accessibility to Public Toilets



# Objectives

- Provide a geospatial representation of where public toilets are currently located and areas where toilets can be added to provide more access in higher demand areas
- Provide recommendations for further Pit Stop Pilot Program analysis and expansion
- Provide cost comparison for public toilet resources and staffing



## Pit Stop Pilot Program Pilot

- Began in July 2014 with a six-month pilot project that provided 3 portable toilets in the Tenderloin
  - Hours: Tuesday through Friday from 2:00-9:00 PM
  - Staff attendants provided by Clean City Coalition
- Program expanded to include a 2 more portable locations and 4 semi-permanent JCDecaux locations
  - Staffed by Clean City Coalition and HSA JOBSNOW
- Total of 9 locations



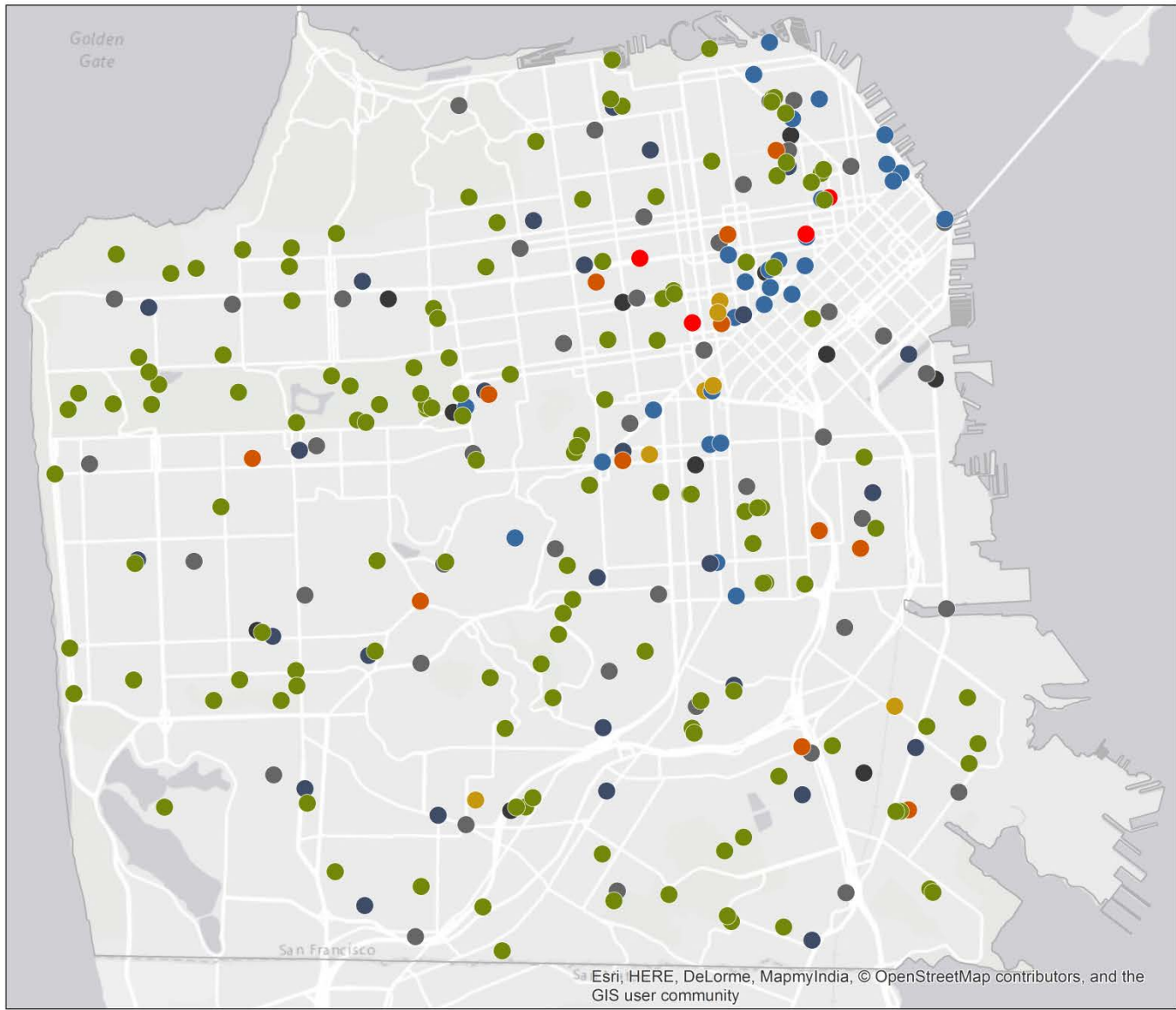
# Types of Current Public Toilets

- Permanent
  - Recreation Centers
  - Parks
  - Libraries
  - Health Centers/Hospitals
  - Parking Garages
  - Police and Fire Stations
- Portable
  - Pit Stop Pilot Program
    - 5 locations
    - 4 future locations TBD
- Semi-permanent
  - JCDecaux
    - 25 locations
    - Public Works contract set to expire in January 2017



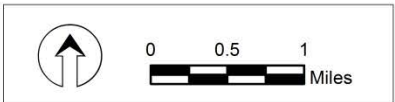
# Geospatial Analysis





**RESPONSIBLE DEPARTMENT**

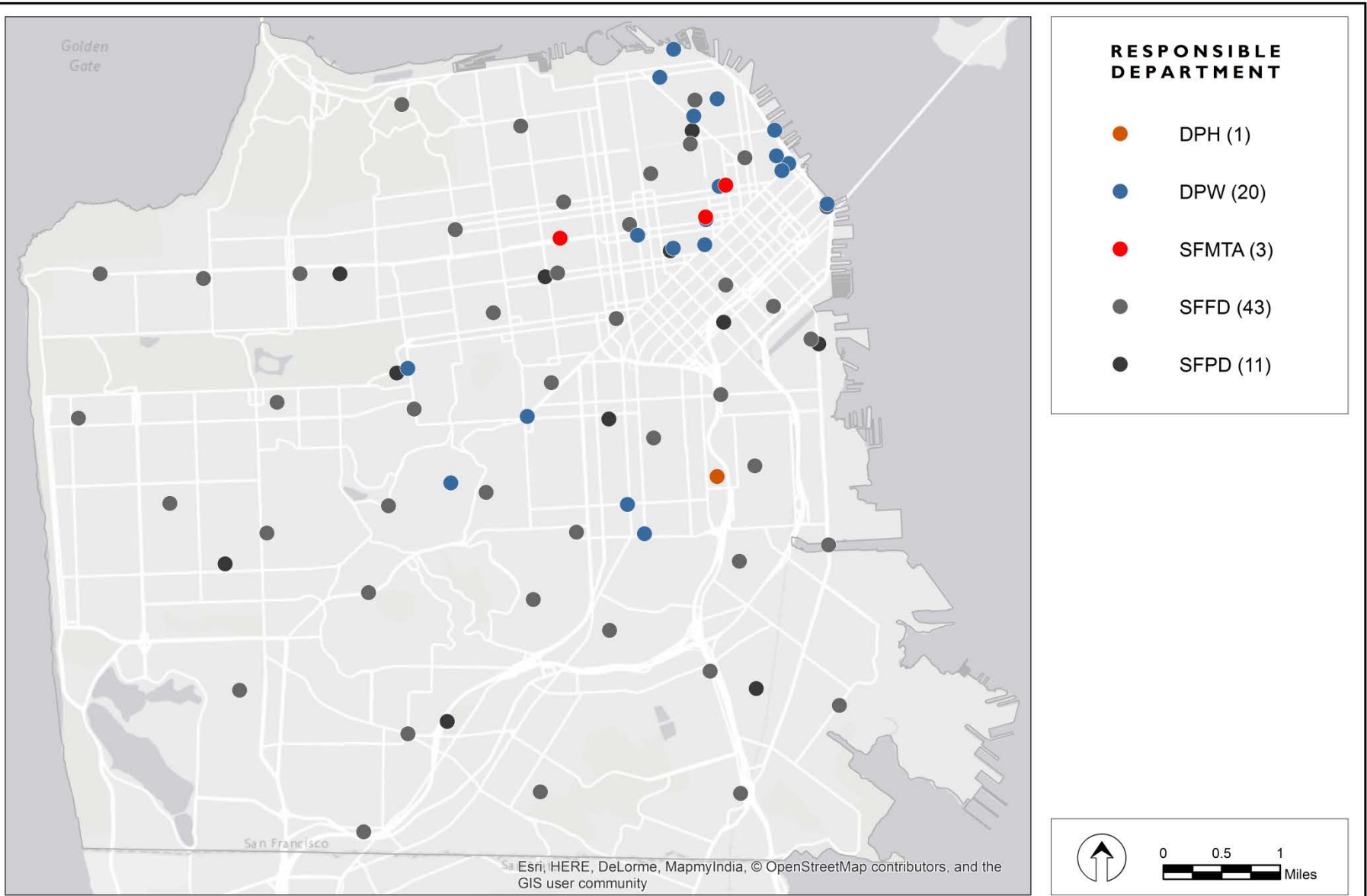
●	DPH (13)
●	DPW (30)
●	LIB (28)
●	REC (138)
●	SFMTA (4)
●	OTHER CCSF (7)
●	SFFD (43)
●	SFPD (11)



Sources: San Francisco Recreation & Parks Department, San Francisco Public Works

October 2015

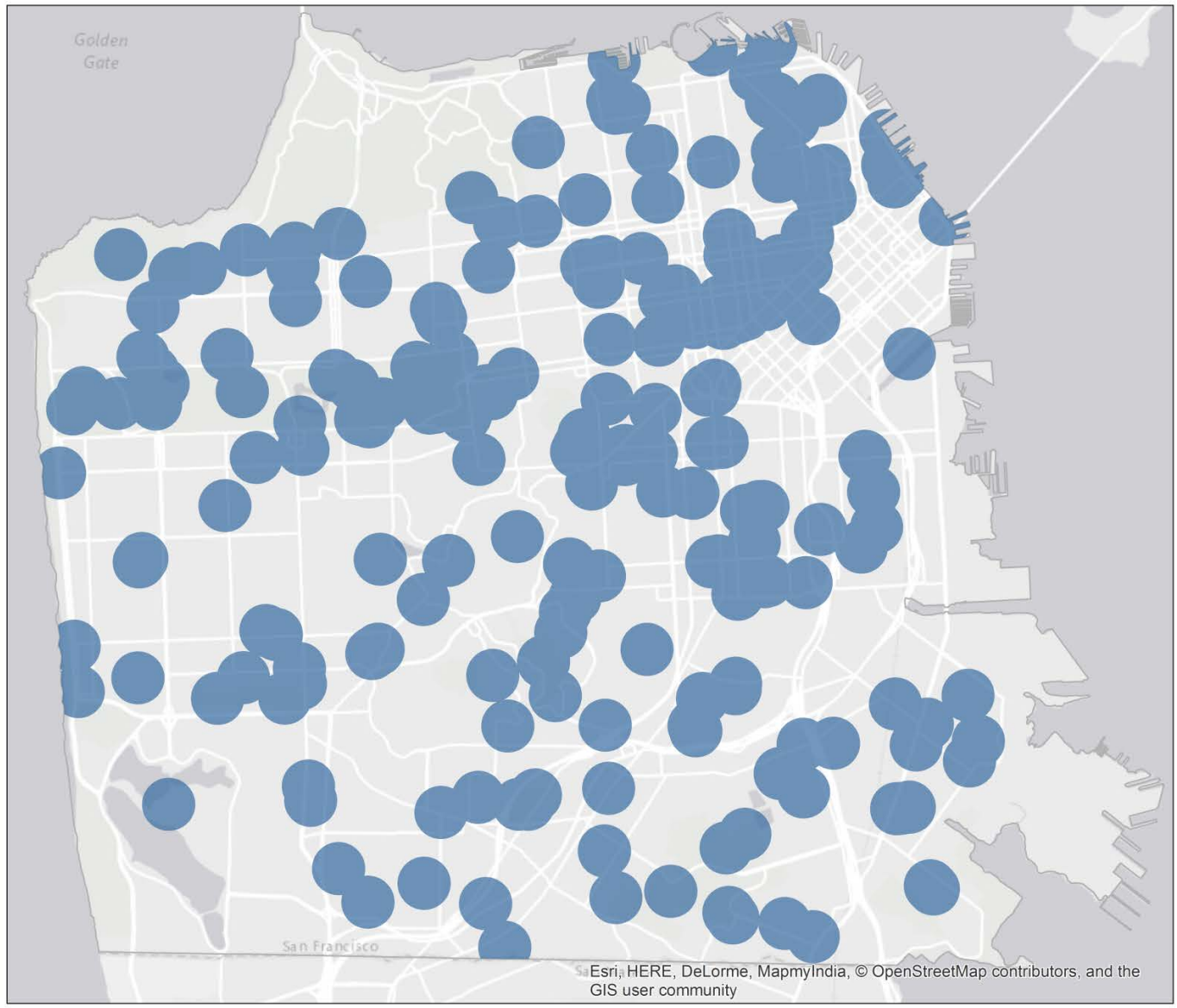
**FIGURE 1A  
PUBLIC RESTROOMS IN THE CITY & COUNTY OF SAN FRANCISCO**



Sources: San Francisco Recreation & Parks Department, San Francisco Public Works



October 2015

**FIGURE 1B  
PUBLIC RESTROOMS OPEN AFTER MIDNIGHT**



**LEGEND**

 0.2 MILE BUFFER

  0 0.5 1 Miles

Esri, HERE, DeLorme, MapmyIndia, © OpenStreetMap contributors, and the GIS user community

Sources: San Francisco Recreation & Parks Department, San Francisco Public Works

October 2015

**FIGURE 2**  
**AREAS IN SAN FRANCISCO WITHIN 0.2 MILE OF A PUBLIC RESTROOM**



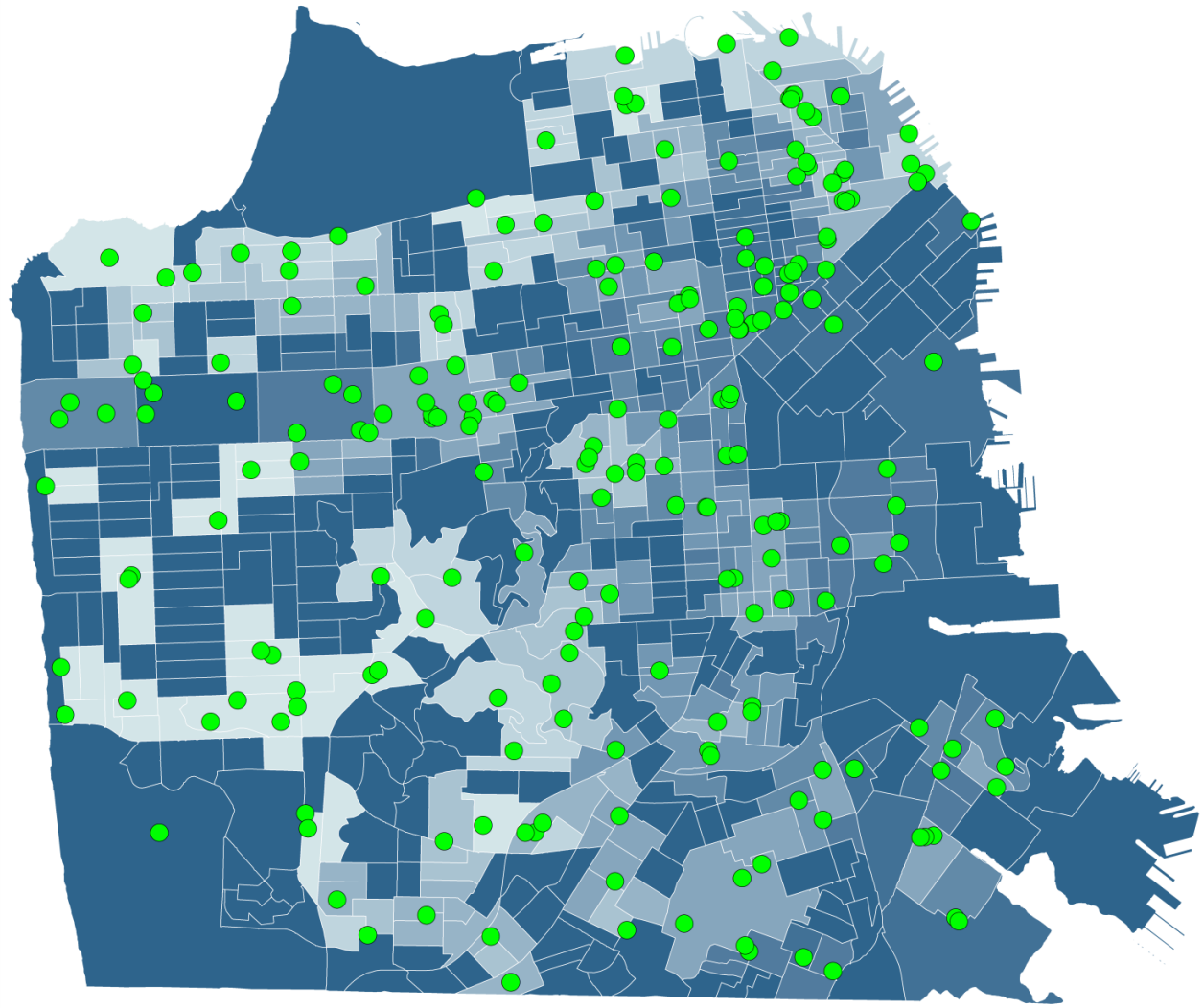


FIGURE 4

**ACCESSIBILITY OF PUBLIC RESTROOMS TO THE HOMELESS POPULATION**

October 2015

Sources: SF Recreation & Parks Department, SF Public Works, US Census Bureau, Applied Survey Research

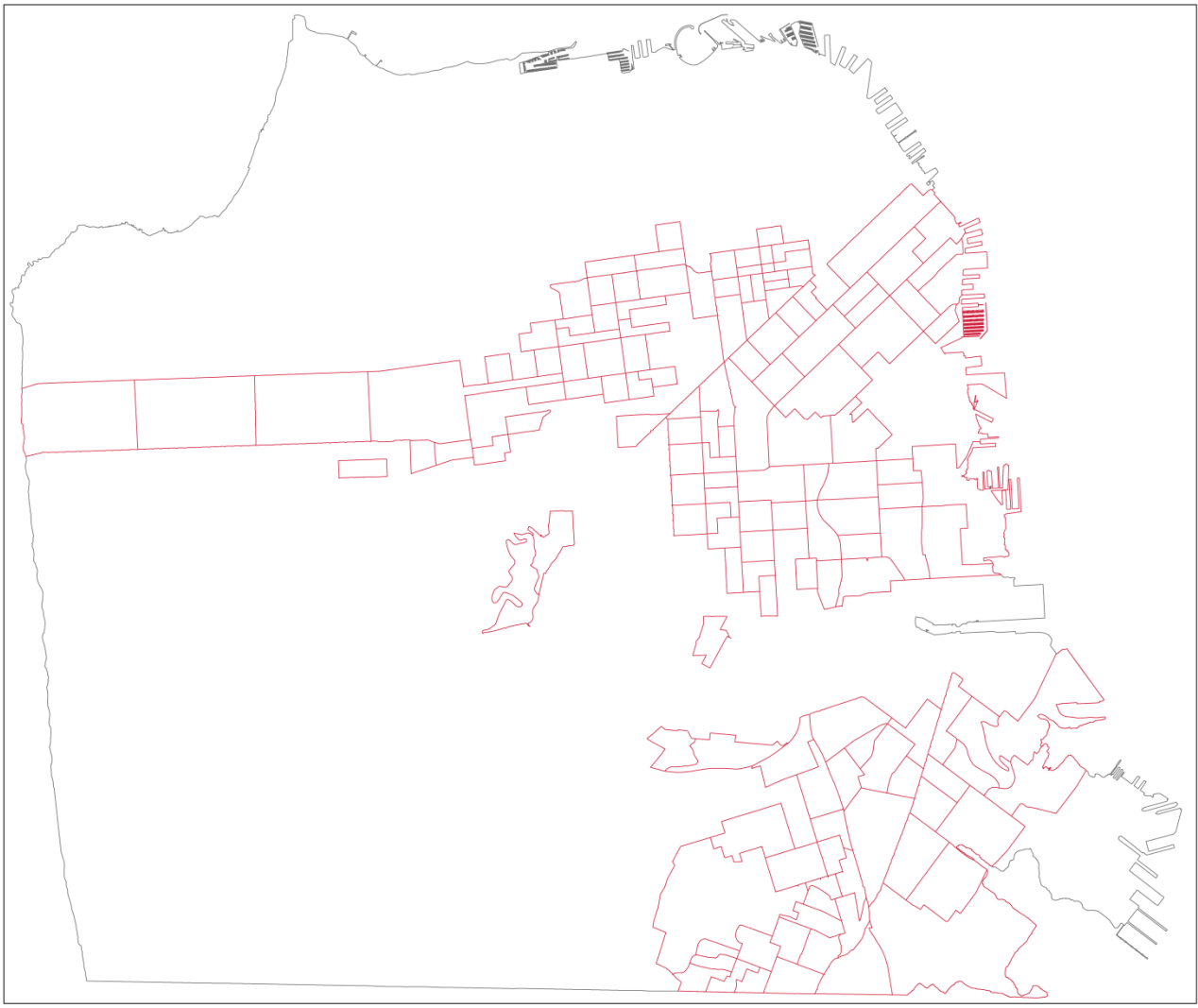
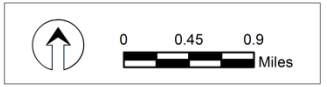
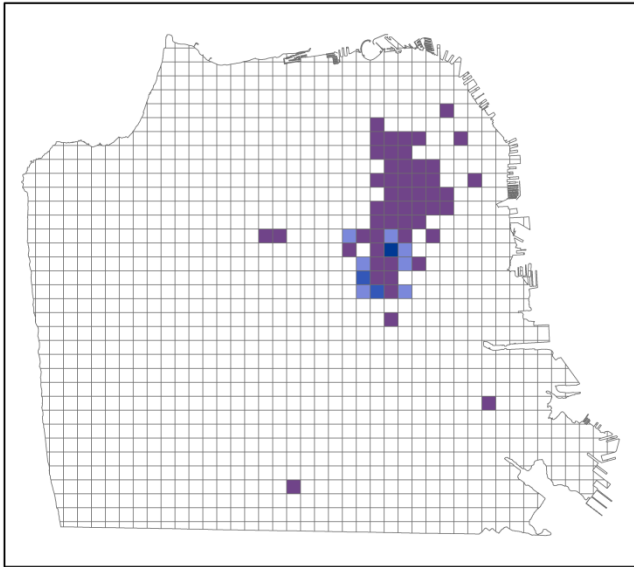
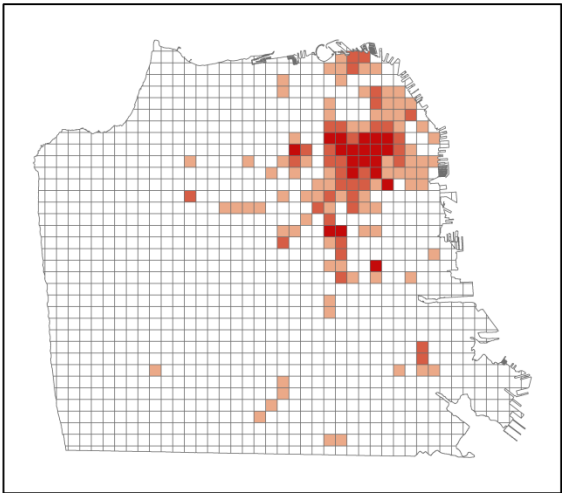
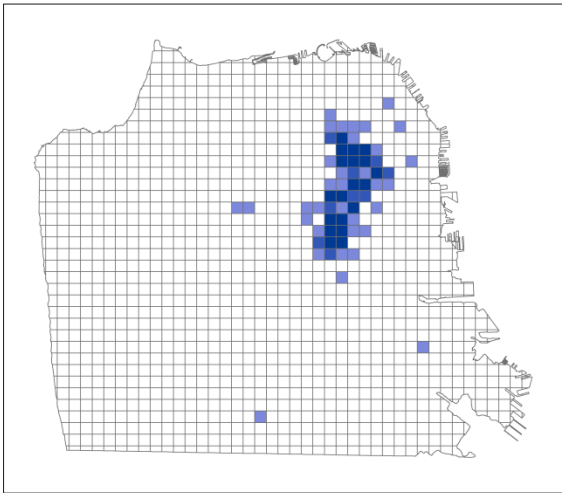


FIGURE 5  
**POTENTIAL PRIORITY AREAS  
FOR IMPROVING ACCESS TO  
PUBLIC RESTROOMS**

October 2015



Sources: SF Recreation & Parks Department, SF Public Works, US Census Bureau, Applied Survey Research



**LEGEND**

**311 CALLS**

- < 0.50 Std. Dev.
- 0.50 - 1.5 Std. Dev.
- 1.5 - 2.5 Std. Dev.
- > 2.5 Std. Dev.

**CRIMES**

- < 0.50 Std. Dev.
- 0.50 - 1.5 Std. Dev.
- 1.5 - 2.5 Std. Dev.
- > 2.5 Std. Dev.

Areas with high 311 calls and crime

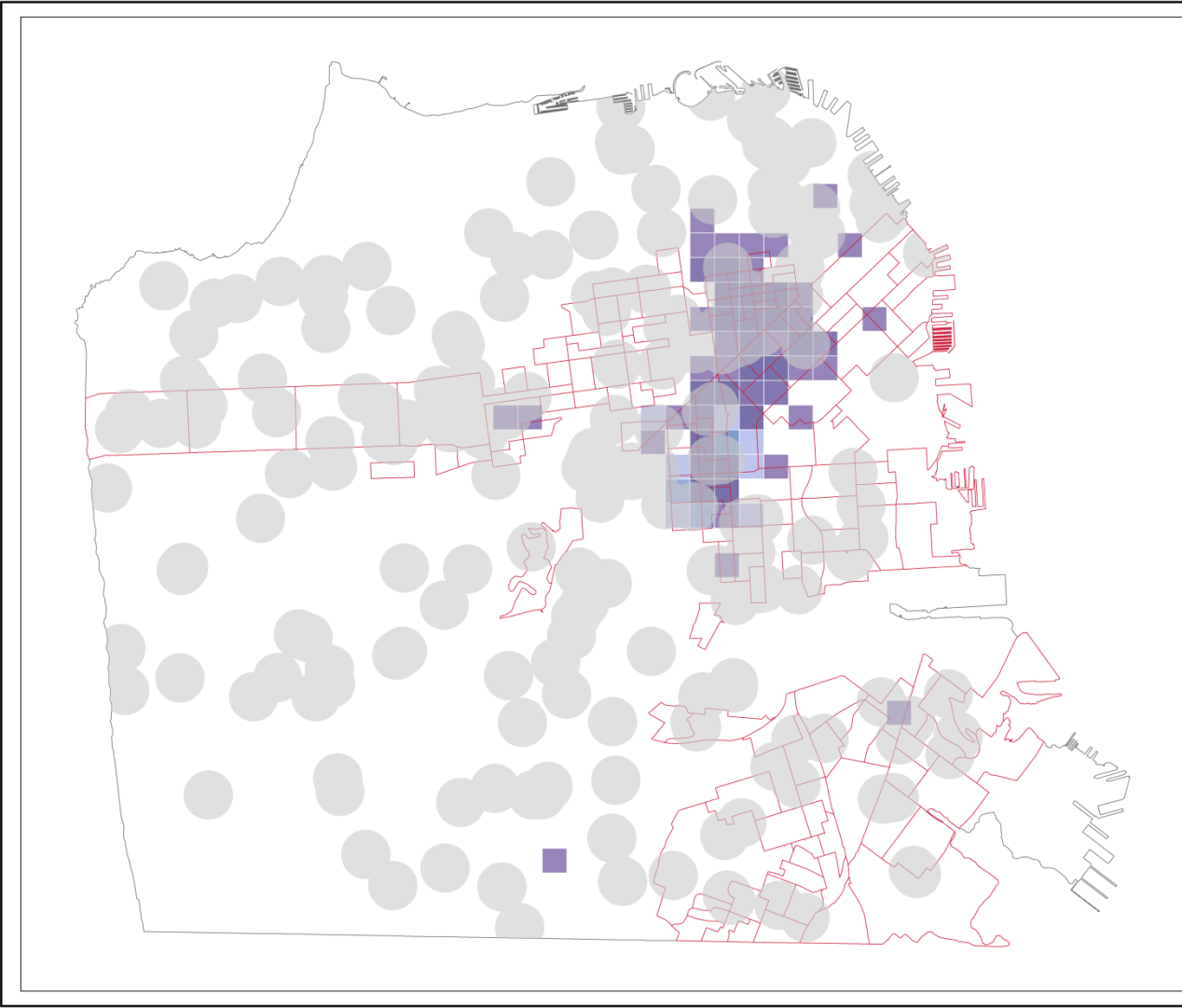
FIGURE 6

**HOTSPOTS: CRIME AND 311 REQUESTS FOR STREET CLEANING DUE TO HUMAN WASTE OR URINE**



October 2015

Sources: SF Recreation & Parks Department, SF Public Works, US Census Bureau, Applied Survey Research



**LEGEND**

- Areas within 0.2 miles of an existing public restroom
- Potential priority areas for improving access to public restrooms
- Areas with a greater incidence of 311 requests and crime
- Areas with a greater incidence of 311 requests

FIGURE 7A  
**OPPORTUNITIES FOR  
EXPANSION OF THE PIT  
STOP PROGRAM**

October 2015

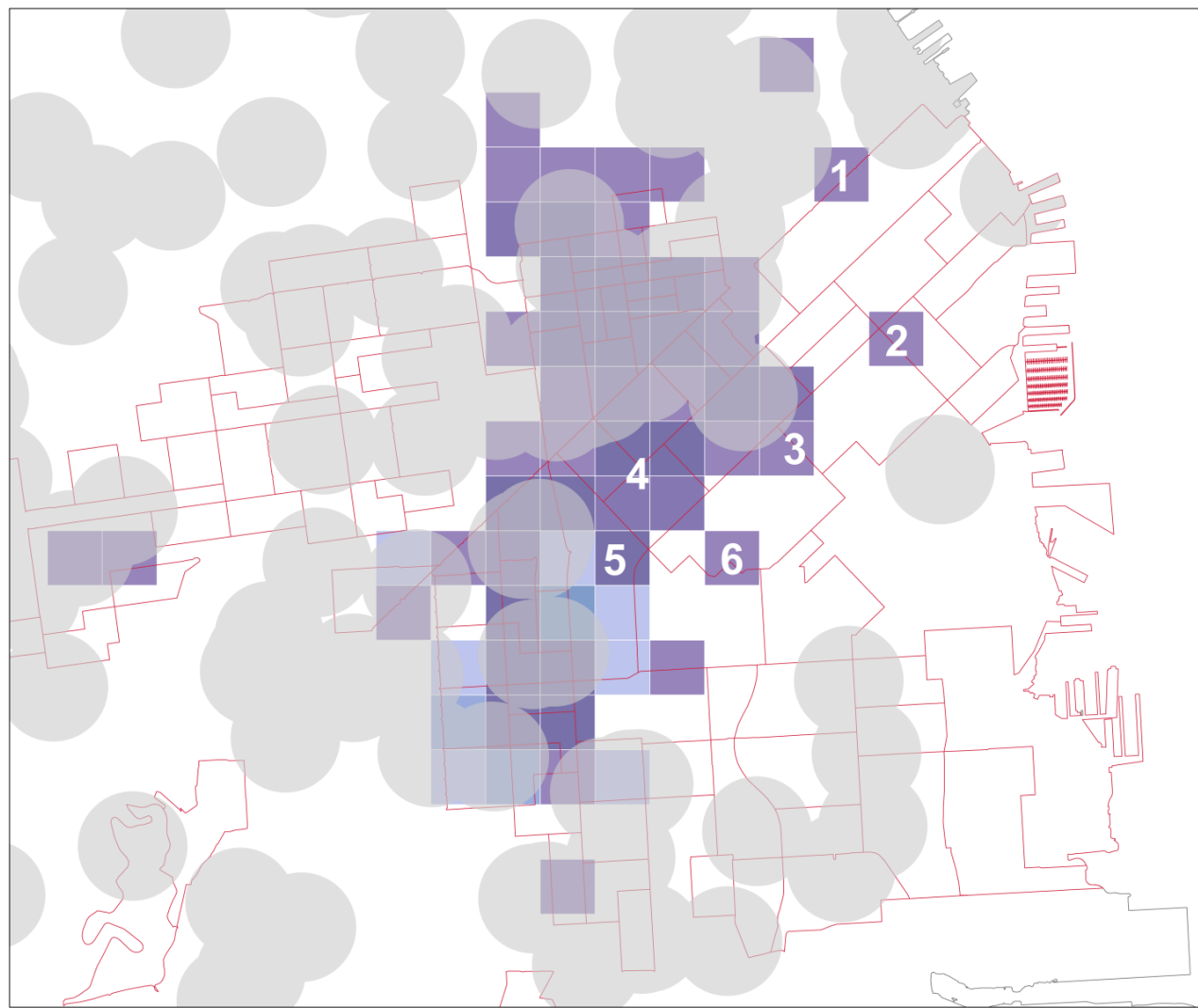
0

0.475





0.95

Miles

Sources: SF Recreation & Parks Department, SF Public Works, US Census Bureau, Applied Survey Research, DataSF



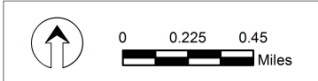
**LEGEND**

-  Areas within 0.2 miles of an existing public restroom
-  Potential priority areas for improving access to public restrooms
-  Areas with a greater incidence of 311 requests and crime
-  Areas with a greater incidence of 311 requests

- 1** Vicinity of Market between New Montgomery & Fremont
- 2** Vicinity of 3rd & Bryant
- 3** Vicinity of 6th & Bryant
- 4** Vicinity of 9th & Folsom
- 5** Vicinity of 13th & Folsom
- 6** Vicinity of 9th & Brannan

**FIGURE 7B**  
**OPPORTUNITIES FOR EXPANSION OF THE PIT STOP PROGRAM**

October 2015



Sources: SF Recreation & Parks Department, SF Public Works, US Census Bureau, Applied Survey Research, DataSF

# Findings and Recommendations



# Findings

- There are many daytime restrooms available throughout the City
  - There are a few locations that have a higher demand
  - Limited number of locations with a need for additional toilets
- Significantly less availability citywide between 9:00 PM and 9:00 AM
  - Pit Stop locations and libraries close by 9:00 PM
  - Recreation and Park facilities are generally open from dawn until dusk



# Recommendations

- Continue a data-driven approach to
  - develop new Pit Stop Pilot locations, and
  - staff more locations
- Evaluate opportunities to expand public restroom hours and staffing
- Evaluate staffing pilots and restroom use





# Other Public Toilet Resources

Toilet Option	Benefits	Per Unit Cost
Porta-Potty Rentals	Short-term or long-term; moveable	\$200 per month*
Portable Personal Toilet	Available anytime, day or night	\$80 plus \$3 per bag
AirPnP/Toilet Finder Apps	Clean comfortable bathroom anywhere available	Varies from \$0-\$5 per use
PPlanter	Available anytime; safe but transparent	\$150,000 plus maintenance
Portland Loo	Sturdy, designed for urban areas	\$140k-\$250k per unit plus \$12k maintenance**



\*Cost does not include calls for service

\*\*Costs may be higher depending on needed sewer connection

# PPlanter Overview

- PPlanter is self contained, so it does not need water, power or sewer connections
- Provides transparency, dignity, accessibility and public safety
- Reuse of greywater and nutrient recovery
- Plants help treat the water and present a green aesthetic to bathroom facilities
- Available 24/7
- Not for all human waste
  - May be a solution for areas where urine is an issue



# Portland Loo

- Designed to be durable in an urban setting
- Environmentally friendly
  - Solar and AC-powered
  - LED lighting
  - 1.28 gallons/flush
- Requires sewer connection
- In 2012, Portland paid an estimated \$140,000 for the first loo
  - Subsequent units: \$60,000 each
  - Annual maintenance fee: \$12,000 per unit



# Associated Benefits of Public Toilets

- Environmental
  - Recycled Water
  - Clean streets
  - Supports Public Works Department pee resistant paint expansion efforts
- Cost reduced for street clean up and steam clean requests etc.
- Clean and safe accessible facilities



## Benefits of Staffed Toilets

- Human dignity: Providing people who need the bathroom a clean and safe place to relieve themselves
- Clean and safe public facilities
- Jobs program providing workforce development opportunities for low-income individuals
  - \$16-\$20/hour



# Staffing

- As of October 2015 the Pit Stop Pilot Program includes 9 staffed toilet locations
- Portable toilets are staffed 8 hours/day 4 days/week
- JCDecaux are staffed 12 hours/day 7 days/week
  - Unstaffed locations are open 24/7



# Staffing Continued

- Public Works prioritized Pit Stop Pilot locations based on the following:
  - Proximity to soup kitchens
  - Walking survey of feces
  - Public Works street cleaner feedback
  - 311 human waste requests
- Public Works proposed 1-year pilot for staffing at a cost of \$87,360 per location
  - Church/Market JCDecaux
- Public Works is in the process of identifying other priority locations for staffing





# Pit Stop Pilot Program Budget

- \$101,600 per portable location
- \$87,360 per staffing attendant
- \$60,000 add-back from Supervisor Breed will be used to staff the JCDecaux restroom at Stanyan and Waller





# Toilet Summary Cost Comparison

	JCDecaux	Portable	Porta-Potty	PPlanter (full system)	Portland Loo
Day/Night	24 hours w/out attendant	Day (current)	24 hours	24 hours	24 hours
Estimated Annual Cost (per unit)	\$0	\$101,600	\$2,400	\$150,000	\$212,000
Staffing Costs (14 hours)	\$101,920	\$101,920	\$101,920	\$101,920	\$101,920
Total Cost	\$101,920	\$203,520	\$104,320	\$251,920	\$313,920