

Public Safety and Neighborhood Services Committee Meeting March 19, 2015

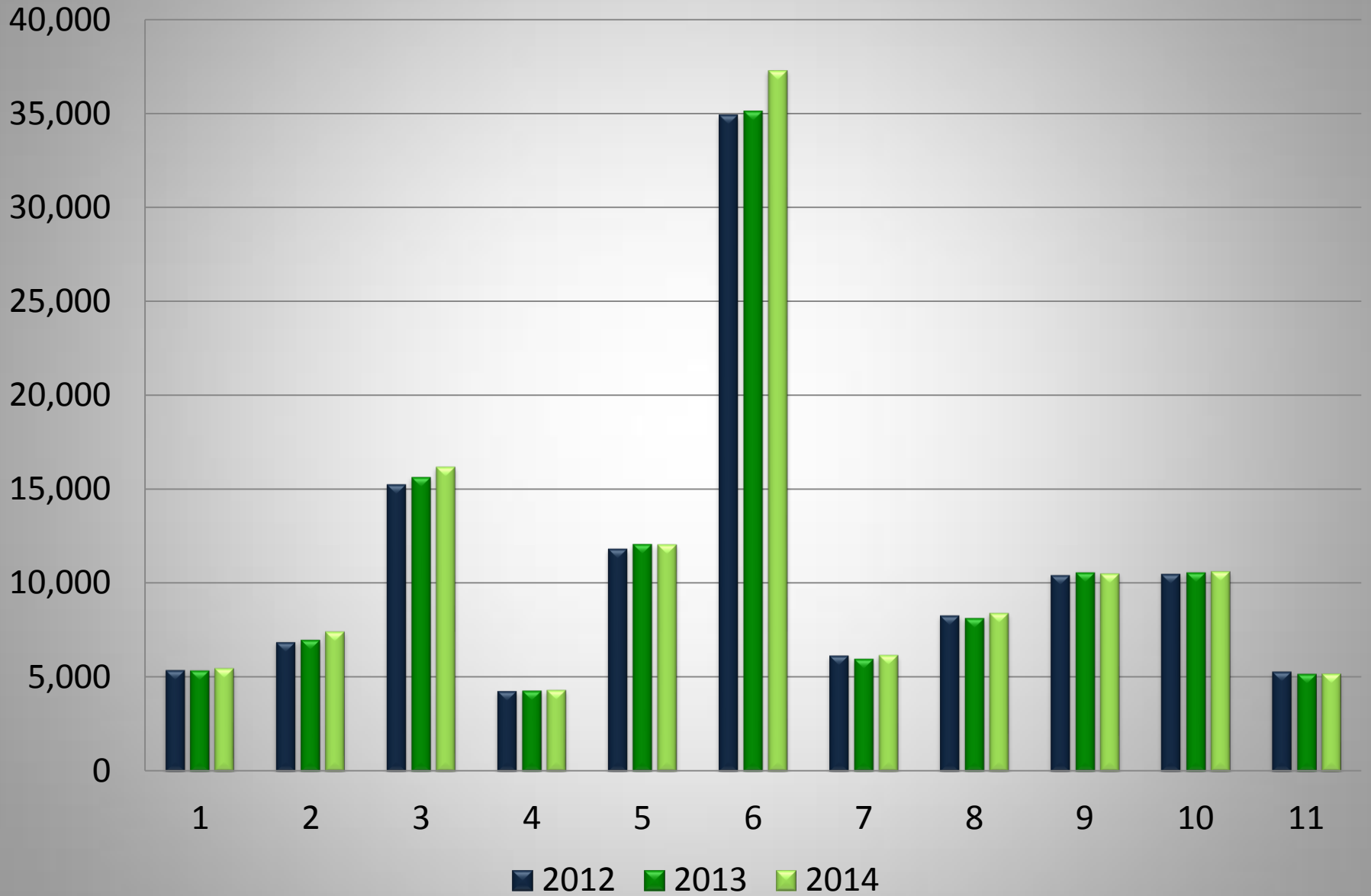




MISSION STATEMENT

The mission of the San Francisco Fire Department is to protect the lives and property of the people of San Francisco from fires, natural disasters, and hazardous materials incidents; to save lives by providing emergency medical services; to prevent fires through prevention and education programs; and to provide a work environment that values health, wellness and cultural diversity and is free of harassment and discrimination.

SFFD Call Distribution By Supervisor District





San Francisco Fire Department

Bureau of Fire Prevention

- The San Francisco Fire Department’s Bureau of Fire Prevention (BFP) enforces laws and regulations (minimum established standards) for the protection of life and property against fire, explosion and panic within the City and County of San Francisco. The Bureau enforces the following law/regulations:
 - California Health and Safety Code
 - Title 19 “Regulations of the State Fire Marshal”
 - Title 24 part 2 (volumes I and II) California Building Code (CBC)
 - Title 24 part 9 California Fire Code (CFC) with San Francisco amendments (SFFC)



San Francisco Fire Department

Bureau of Fire Prevention

The Bureau of Fire Prevention consists of:

- Plan Check
- Districts
- Fire Permits
- High-rise
- Port of San Francisco
- San Francisco International Airport
- Schools
- Residential Care Facilities
- Public Education

California Health and Safety Code Section 13146.2 and Section 17921 (b) requires local fire departments to conduct annual inspections of R-1 (transient in nature--hotels, motels, etc.) and R-2 (non-transient--apartment houses, boarding houses, etc.) structures within the local jurisdiction.

The SFFD annual R-1 and R-2 inspection program:

Hotel and Apartment Inspection (R1 & R2) Operating Guide: developed and distributed to all engine companies. The purpose of the manual is to develop a structured inspection program whose intent is to determine level of fire safety

The program identifies ten issues inspecting companies address:

Fire Alarm (notify building occupants via posting out of service label at control panel and entrance to building)

Sprinkler System/Standpipes

Missing portable fire extinguisher

Emergency lighting

Sprinkler heads, clearance

Expired portable fire extinguisher service tags

Exits Clear

Exit signs maintained

Combustible storage

Unusual Hazards (flammable liquid, lpg)



Current Initiatives

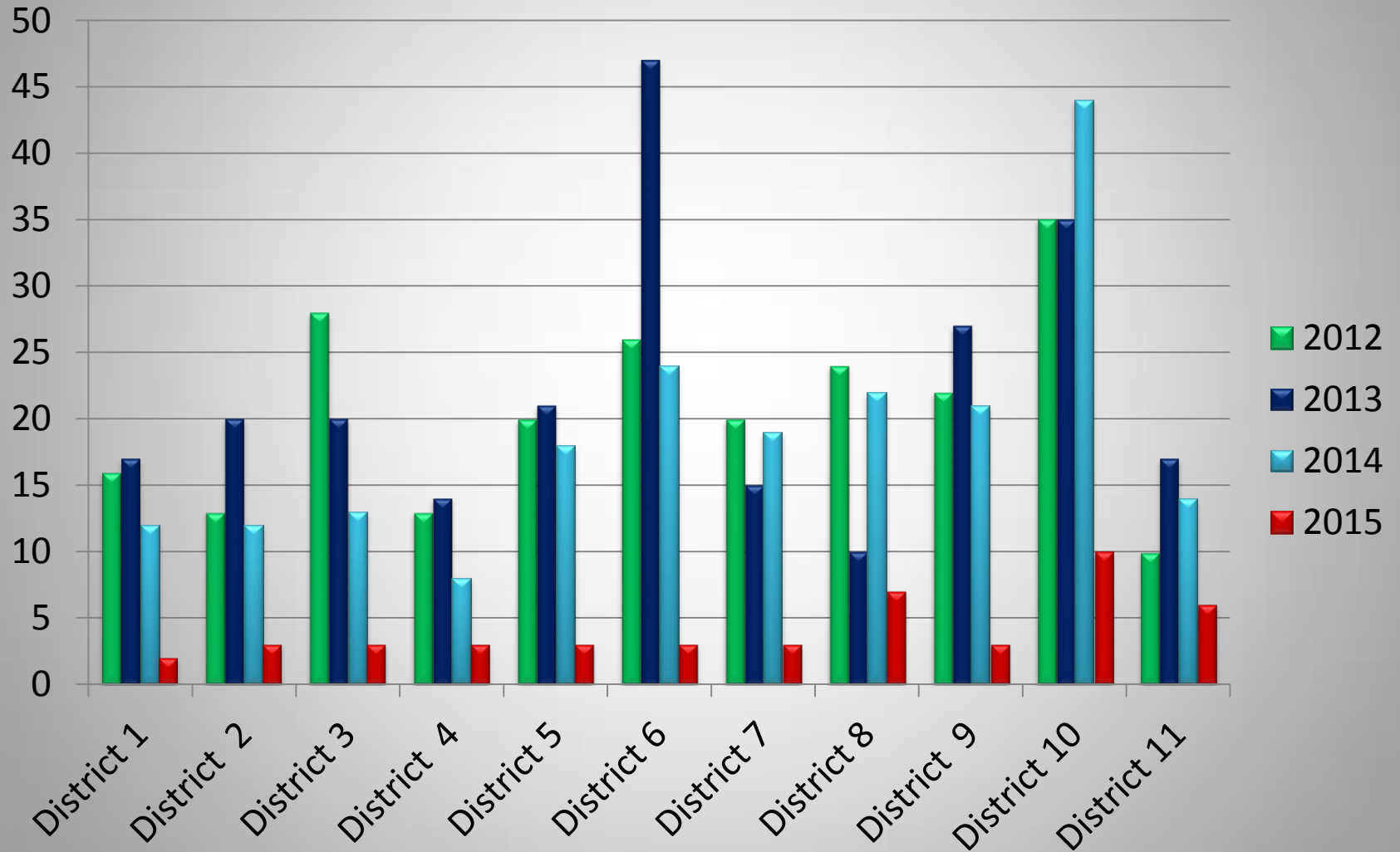
- Currently working with Supervisor Kim's Office to examine the possibility of retrofitting existing 3 and 4 story residential buildings with sprinkler systems
- Working on ways to use technology to create an inspection tracking system/webpage to provide public information
- The Fire Department is partnering with American Red Cross to identify at risk areas to provide and install 10-year smoke alarms and educate residents.



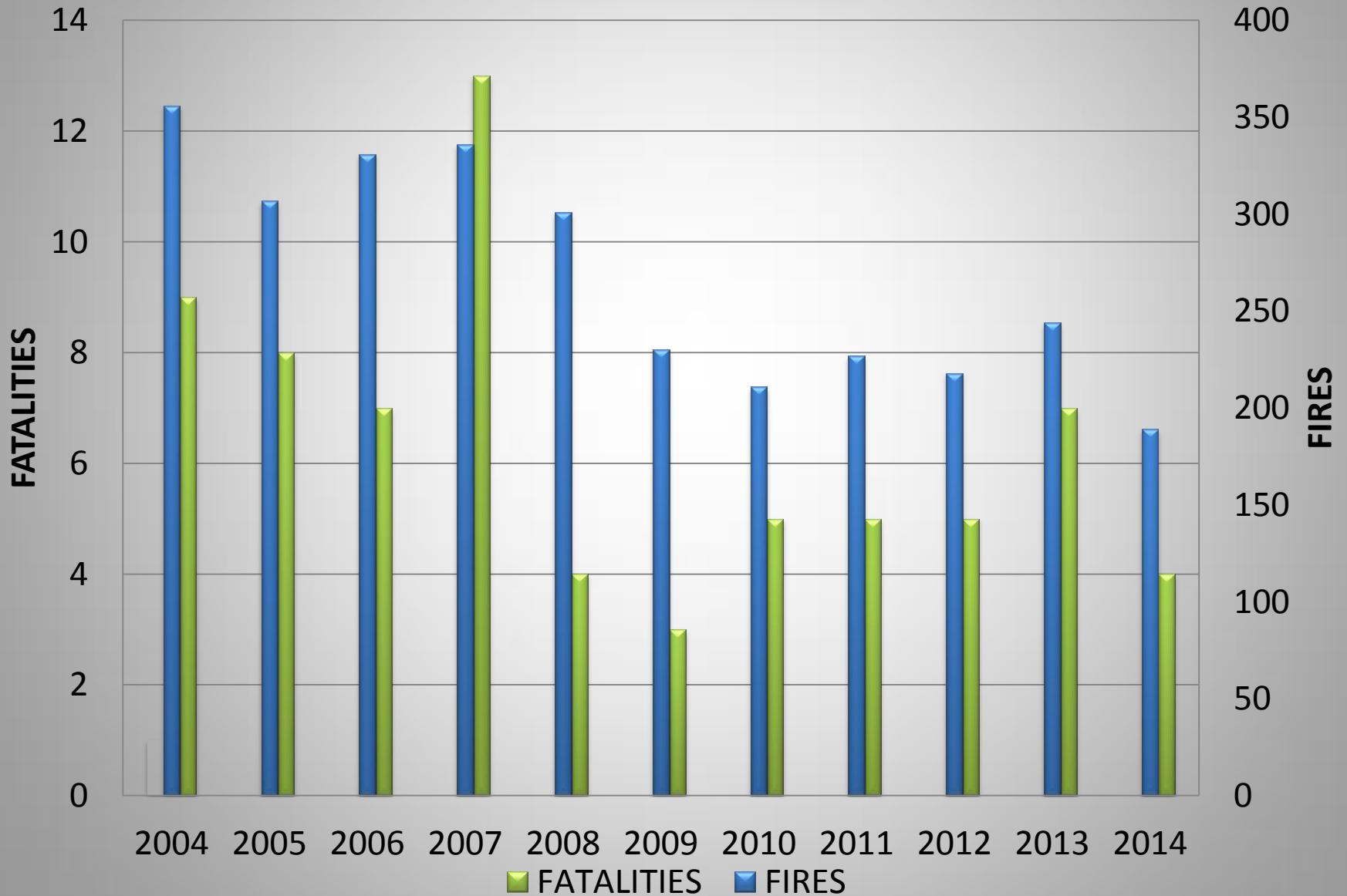
Fire Investigation Basics

- Fire Investigation shall employ all elements of the scientific method as the operating analytical process
- Work from the least damaged areas to the most heavily damaged areas
- Document with notes, photographs, and videos
- Collect evidence (accelerant samples, fire items, and other crime scene evidence)
- Interview witnesses
- Determine the area of origin (Usually the area of the most extensive fire damage)
- Determine the heat source(s)
- Hypothesize the reasons for the fire
- All accidental causes of a fire must be examined and eliminated before determining an incendiary cause
- Cause of Fire
 - Natural
 - Accidental
 - Incendiary (Intentional)
 - Undetermined

SFFD Working Fires by District



Fatalities





City and County of San Francisco
ARSON TASK FORCE

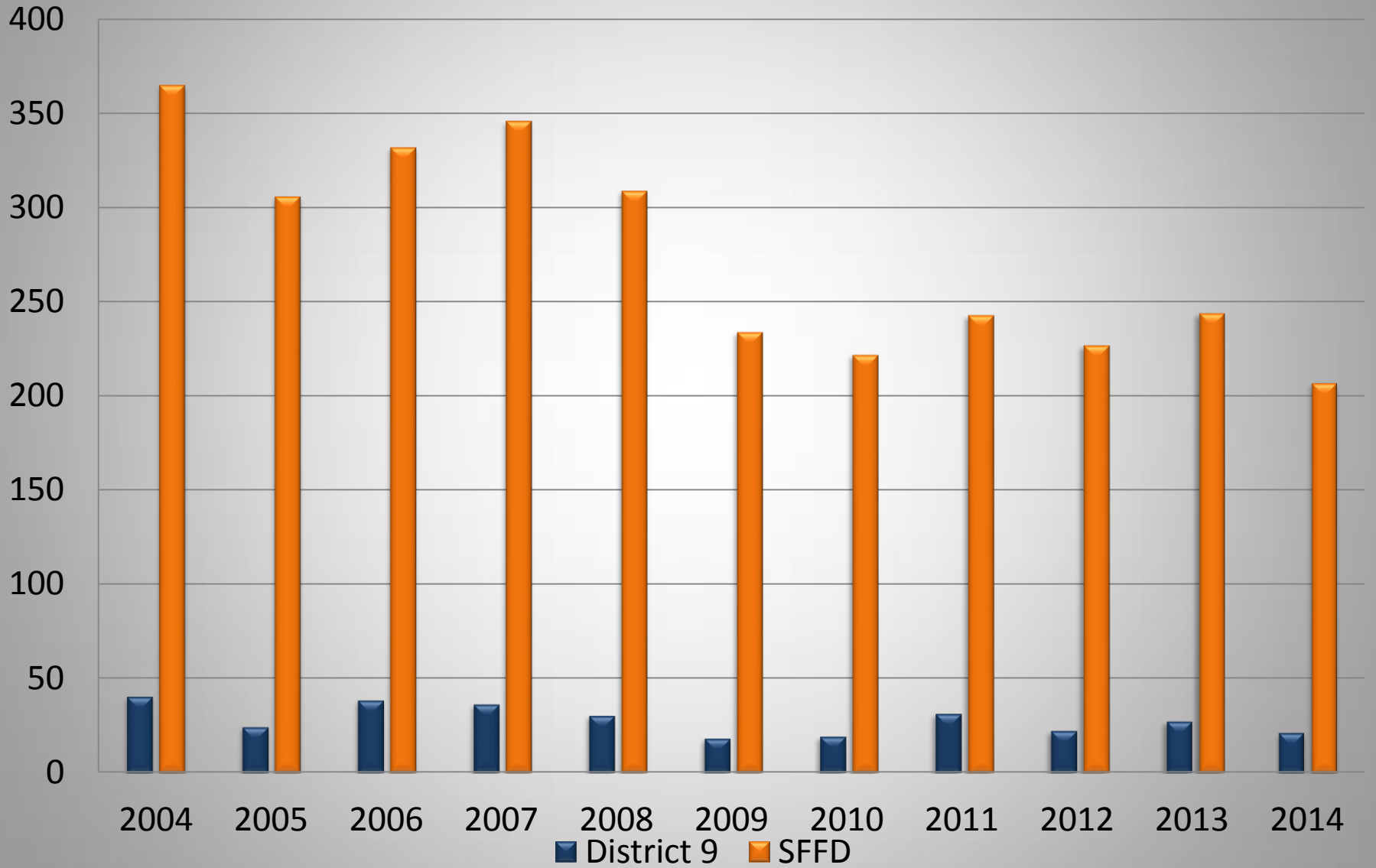


Working Fires and Greater Alarm Fires

DISTRICT

YEAR	1	2	3	4	5	6	7	8	9	10	11	Grand Total	District 9 compared to the entire City
2004	32	31	37	16	42	48	23	24	40	46	24	365	11%
2005	13	15	33	13	29	56	16	28	24	58	20	306	8%
2006	12	18	34	12	39	45	24	30	38	50	29	332	11%
2007	9	25	39	14	38	48	18	34	36	63	22	346	10%
2008	14	23	31	21	33	35	16	31	30	57	18	309	10%
2009	12	13	23	13	30	27	8	20	18	45	25	234	8%
2010	17	14	22	8	24	21	18	16	19	46	17	222	9%
2011	9	13	27	12	21	22	17	29	31	46	16	243	13%
2012	16	13	28	13	20	26	20	24	22	35	10	227	10%
2013	17	20	20	14	21	47	15	10	27	35	17	244	11%
2014	12	12	13	8	18	24	19	22	21	44	14	207	10%
2015	2	3	3	3	3	3	3	7	3	10	6	46	7%
Grand Total	165	200	310	147	318	402	197	275	309	535	218	3081	

Working Fires





National Trend

Trends in fires, deaths, injuries and dollar loss

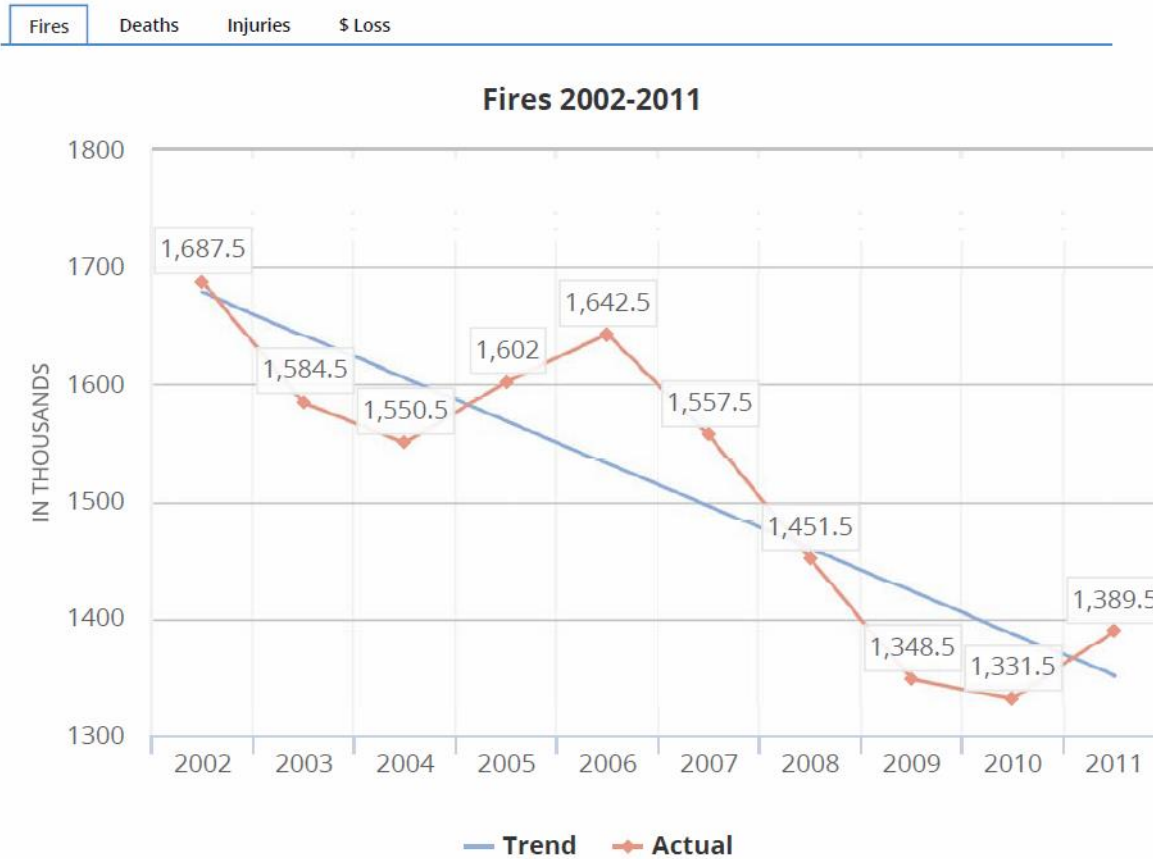
Fires	1,389,500 in 2011	-19.5% from 2002	↓
Deaths	3,005 in 2011	-20.6% from 2002	↓
Injuries	17,500 in 2011	-5.3% from 2002	↓
\$ Loss	\$11.7 billion in 2011	-4.3% * from 2002	↓

* Adjusted to 2011 dollars

See: [National Fire Protection Association \(http://www.nfpa.org/research/reports-and-statistics/fires-in-the-us/overall-fire-problem/fire-loss-in-the-united-states\)](http://www.nfpa.org/research/reports-and-statistics/fires-in-the-us/overall-fire-problem/fire-loss-in-the-united-states) for more statistics on U.S. fire loss.



National Trend





Questions?