

# OCEAN VIEW PUBLIC LIBRARY

BROTHERHOOD WAY/ORIZABA AVENUE, SAN FRANCISCO

PLANNING DEPARTMENT PRELIMINARY PROJECT ASSESSMENT PACKAGE

PREPARED BY SAN FRANCISCO PUBLIC WORKS BUREAU OF ARCHITECTURE

JANUARY 2022

**DRAFT**

01/31/2022 12:52:47



## TABLE OF CONTENTS

1. Cover
2. Existing Condition at Project Location
3. Neighborhood Context
4. Neighborhood Context
5. Existing Trees
6. Existing Trees
7. Process
8. Proposed Site Plan
9. Precedents
10. Precedents
11. Precedents
12. Precedents
13. Precedents
14. Proposed Design Options
15. 2-Story Option: Maximum Building Envelope Volume Diagram
16. 3-Story Option: Proposed Site Aerial View
17. 3-Story Option: Maximum Building Envelope Volume Diagram
18. Other Planning Initiatives



*San Francisco Public Library*





## PARCEL SIZES

Proposed Project Boundary	31,620 SF
Parcel 7136 / 060	23,100 SF
Right of Way	8,520 SF
Parcel 7135 / 045	18,670 SF

## ZONING

San Francisco Zoning District	(P) Public
San Francisco Height & Bulk District	(OS) Open Space
Planning District	District 13, Ingleside
Supervisor District	District 11
Special Use District	Oceanview Large Residence & Within 1/4 Mile of Existing Fringe Financial Service
Streetscape & Pedestrian Improvements	Required
Setbacks	None Required



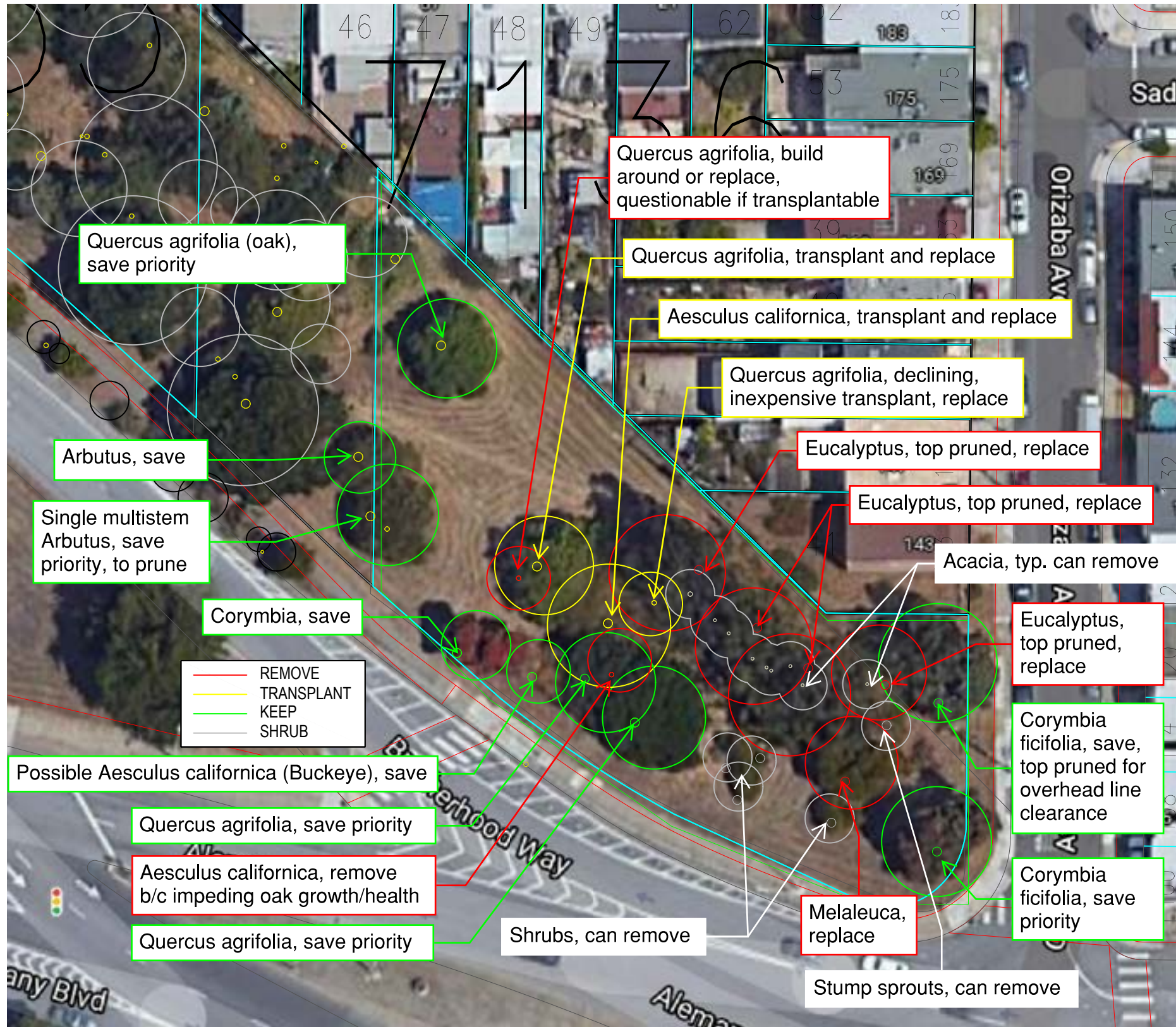




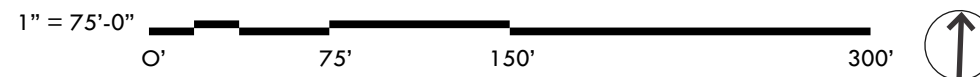




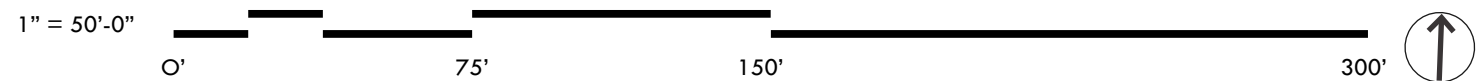
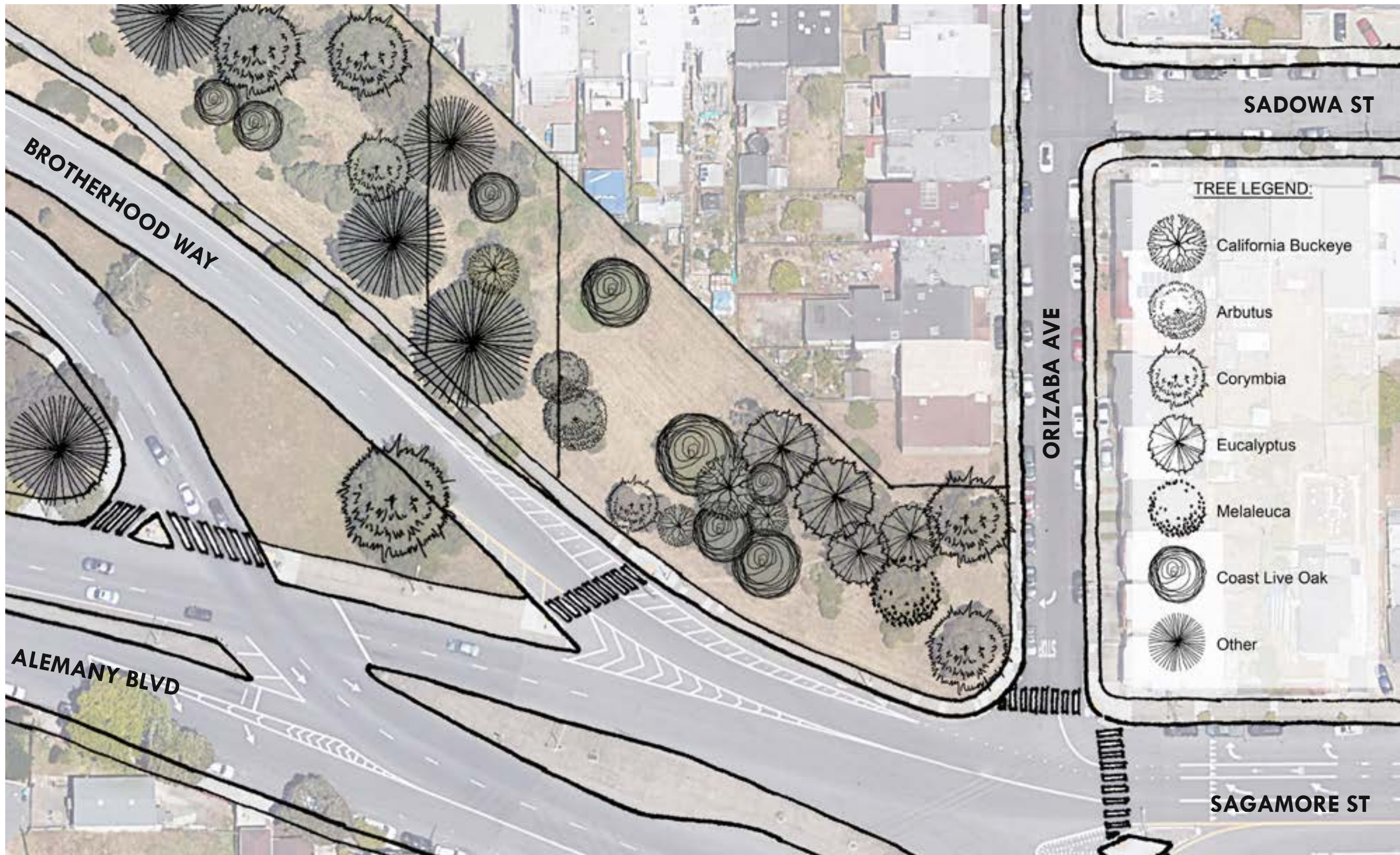




INITIAL TREE ASSESSMENT, PER WALKTHROUGH ON 11/04/2021 WITH NICK CRAWFORD (BUF)





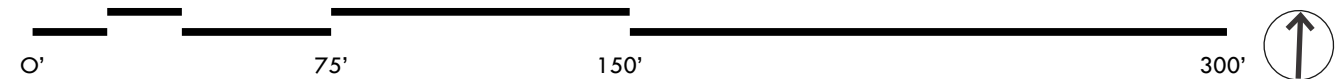




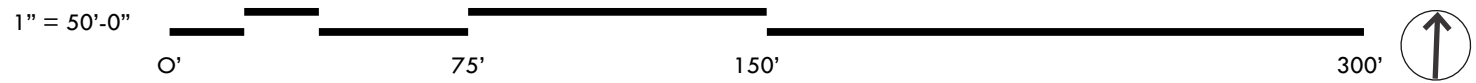
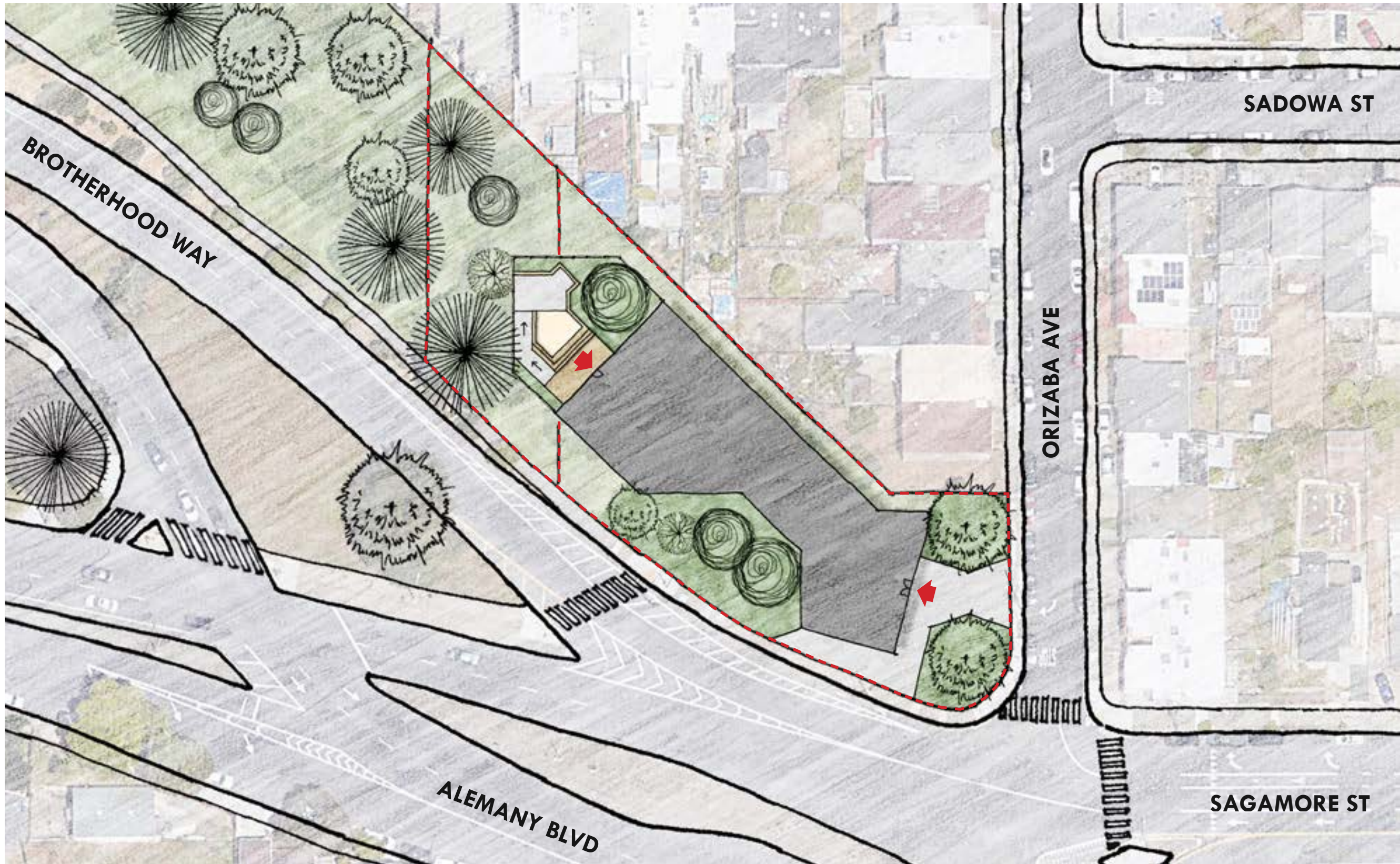


BLOCK: 7135  
LOT: 045

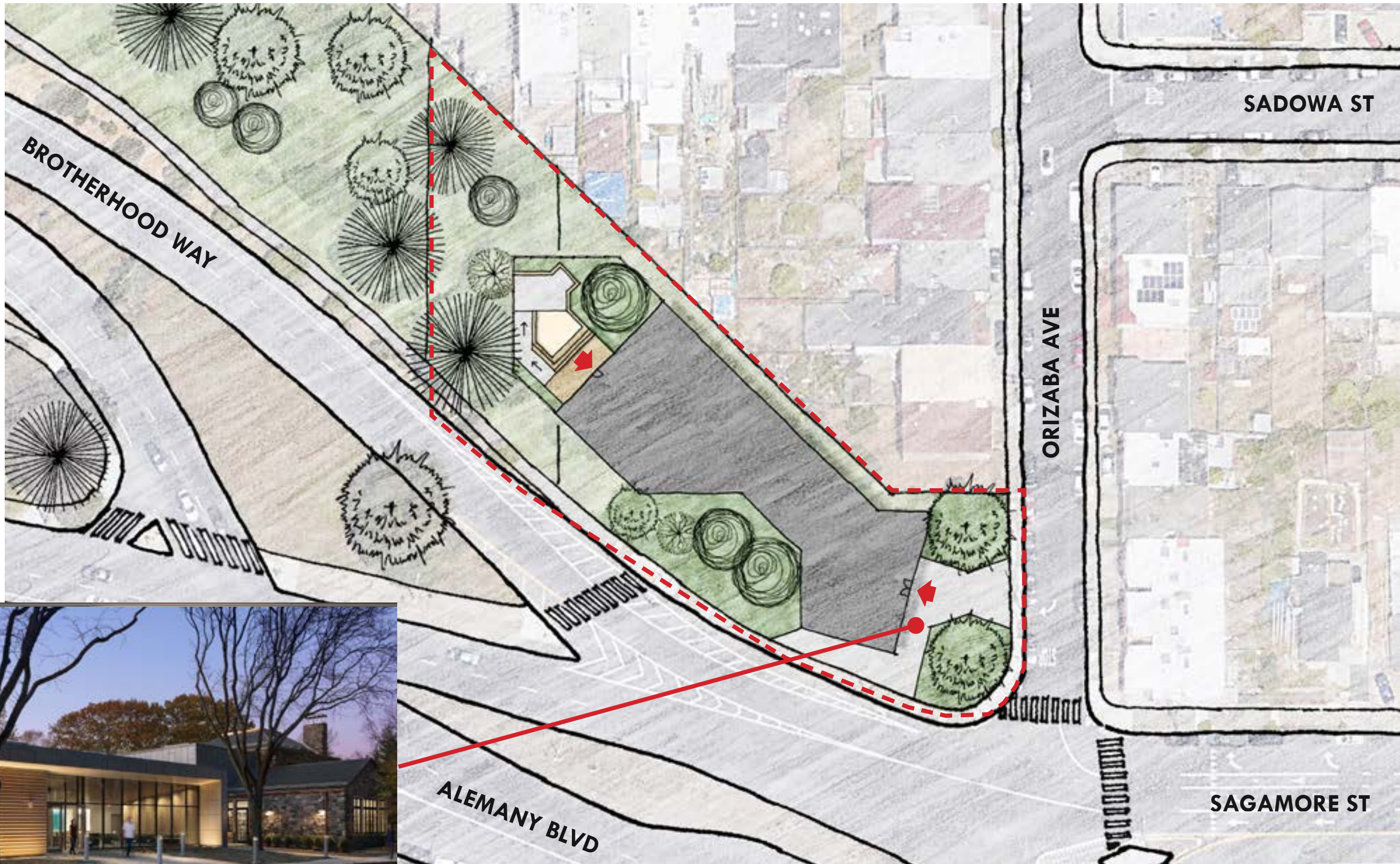
1" = 50'-0"





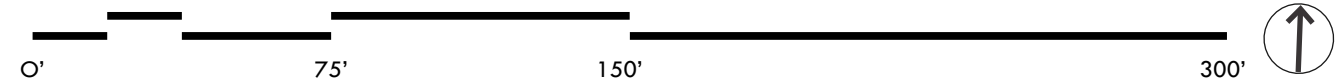






**ENTRY PLAZA**

1" = 50'-0"



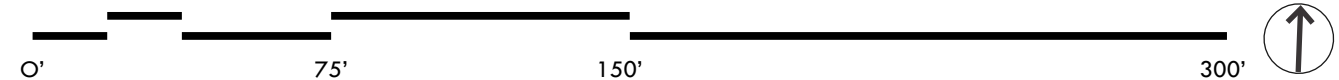
NOTE: IMAGES SHOWN ARE PRECEDENT IMAGES INTENDED TO DEPICT A SIMILAR DESIGN APPROACH AS A REFERENCE





**BUILDING & TREES RELATIONSHIP**

1" = 50'-0"



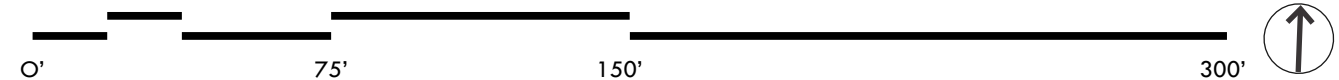
NOTE: IMAGES SHOWN ARE PRECEDENT IMAGES INTENDED TO DEPICT A SIMILAR DESIGN APPROACH AS A REFERENCE





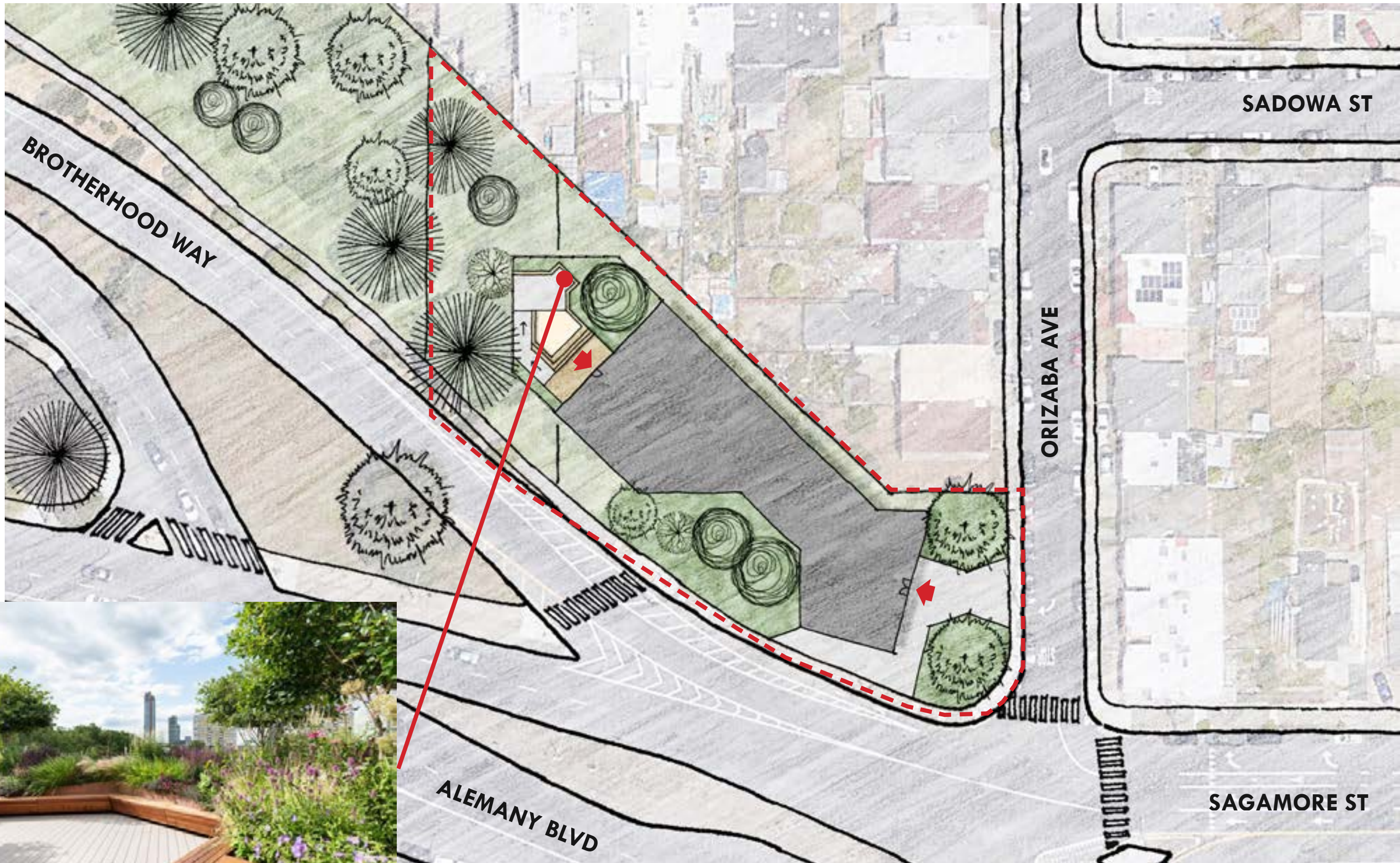
**OUTDOOR CHILDREN'S AREA**

1" = 50'-0"



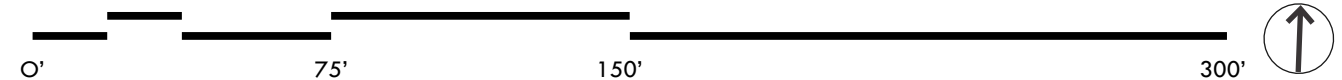
NOTE: IMAGES SHOWN ARE PRECEDENT IMAGES INTENDED TO DEPICT A SIMILAR DESIGN APPROACH AS A REFERENCE





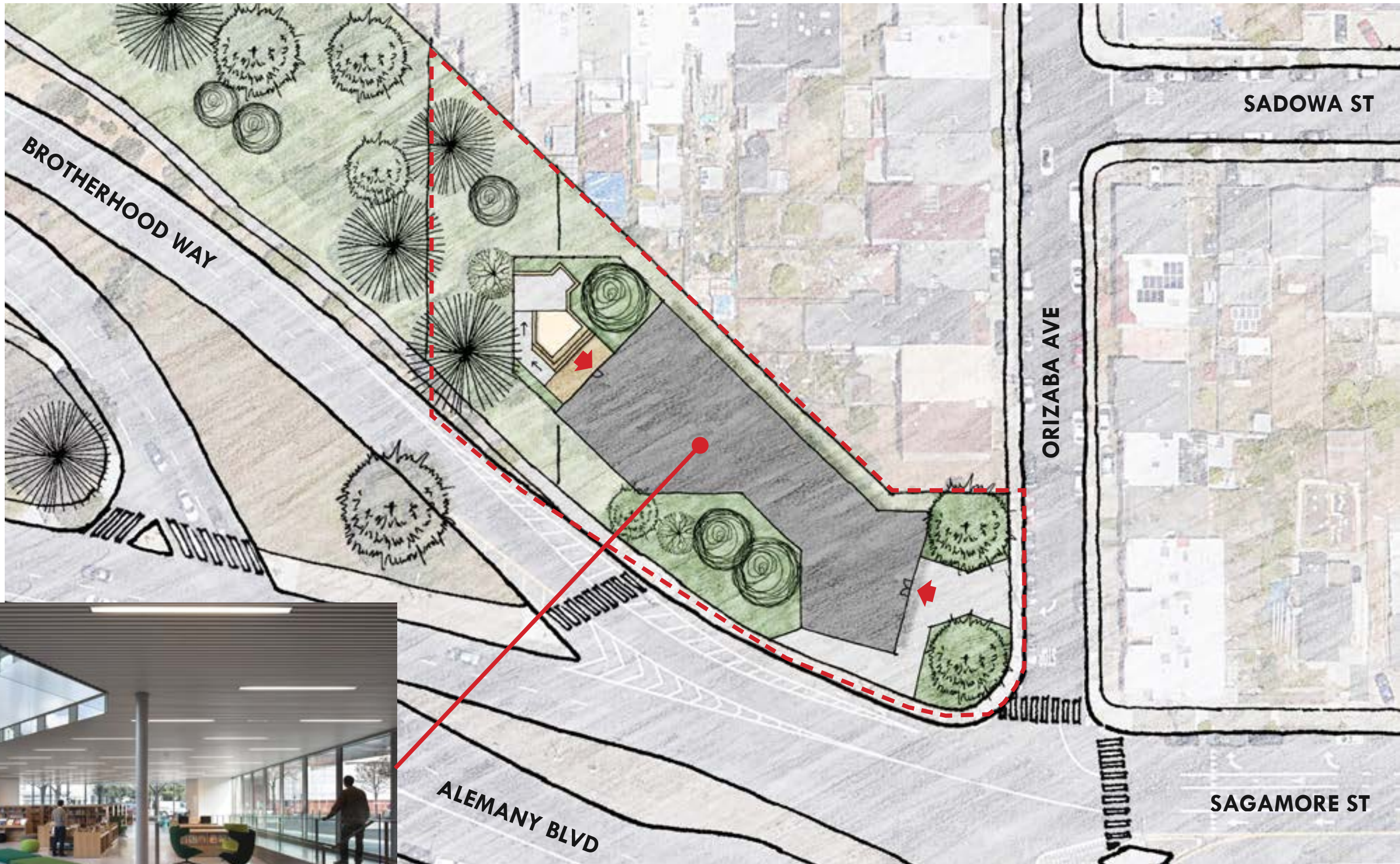
**OUTDOOR SEATING**

1" = 50'-0"



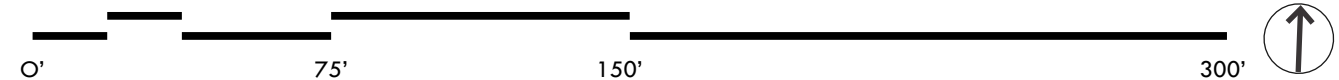
NOTE: IMAGES SHOWN ARE PRECEDENT IMAGES INTENDED TO DEPICT A SIMILAR DESIGN APPROACH AS A REFERENCE





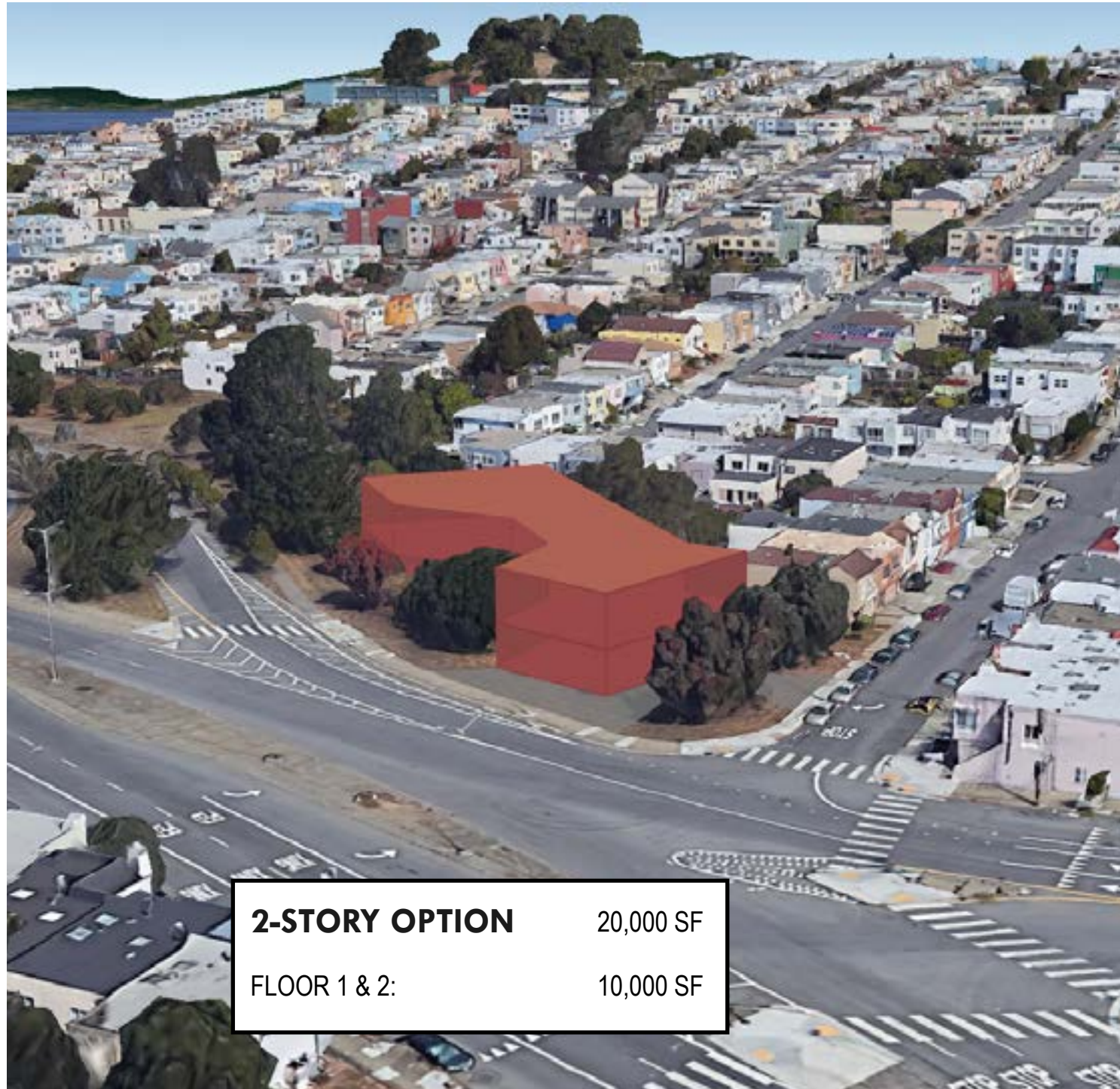
**BUILDING STEPPING DOWN TO GRADE**

1" = 50'-0"



NOTE: IMAGES SHOWN ARE PRECEDENT IMAGES INTENDED TO DEPICT A SIMILAR DESIGN APPROACH AS A REFERENCE





<b>2-STORY OPTION</b>	20,000 SF
FLOOR 1 & 2:	10,000 SF



<b>3-STORY OPTION</b>	30,000 SF
FLOOR 1 & 2:	10,000 SF
FLOOR 3 (PARTNER ORG.):	10,000 SF





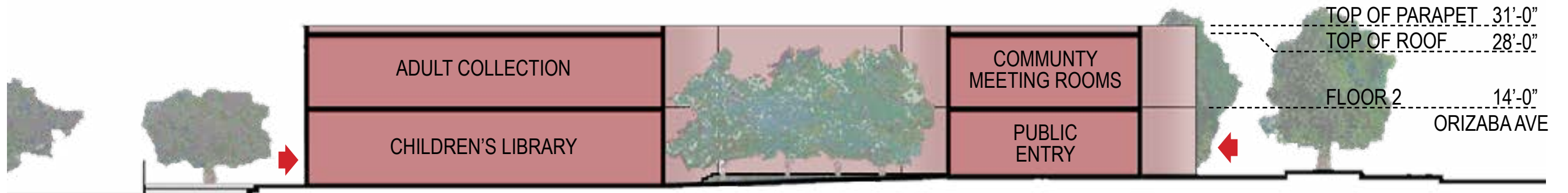
<b>2-STORY OPTION</b>	20,000 SF
FLOOR 1 & 2:	10,000 SF

**2-STORY OPTION: MAXIMUM BUILDING ENVELOPE VOLUME DIAGRAM**

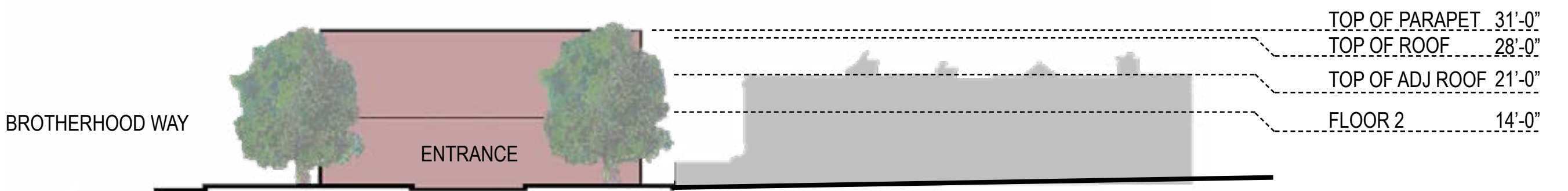
OCEAN VIEW LIBRARY

PLANNING DEPARTMENT PRELIMINARY PROJECT ASSESSMENT PACKAGE | JANUARY 2022



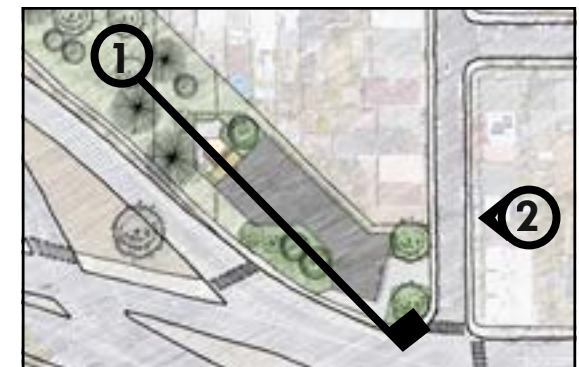


**1 - SECTION**



**2 - ELEVATION FROM ORIZABA AVE**

<b>2-STORY OPTION</b>	20,000 SF
FLOOR 1 & 2:	10,000 SF

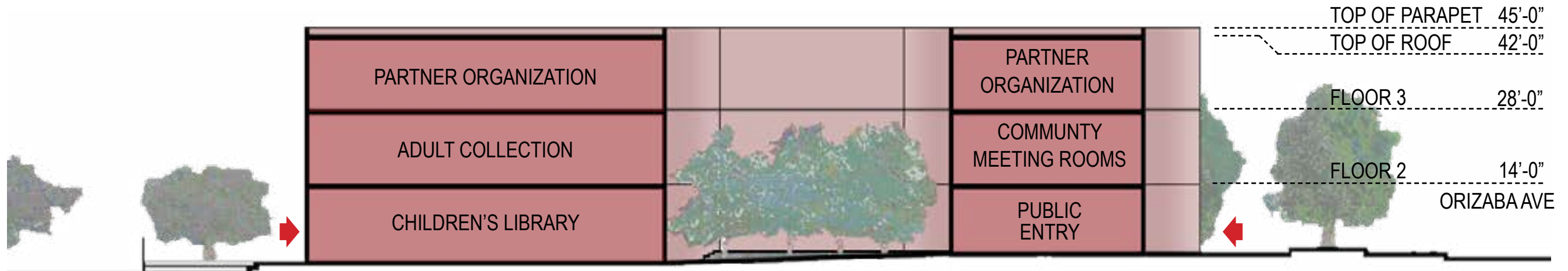






<b>3-STORY OPTION</b>	30,000 SF
FLOOR 1 & 2:	10,000 SF
FLOOR 3 (PARTNER ORG.):	10,000 SF





**1 - SECTION**



**2 - ELEVATION FROM ORIZABA AVE**

<b>3-STORY OPTION</b>	30,000 SF
FLOOR 1 & 2:	10,000 SF
FLOOR 3 (PARTNER ORG.):	10,000 SF

