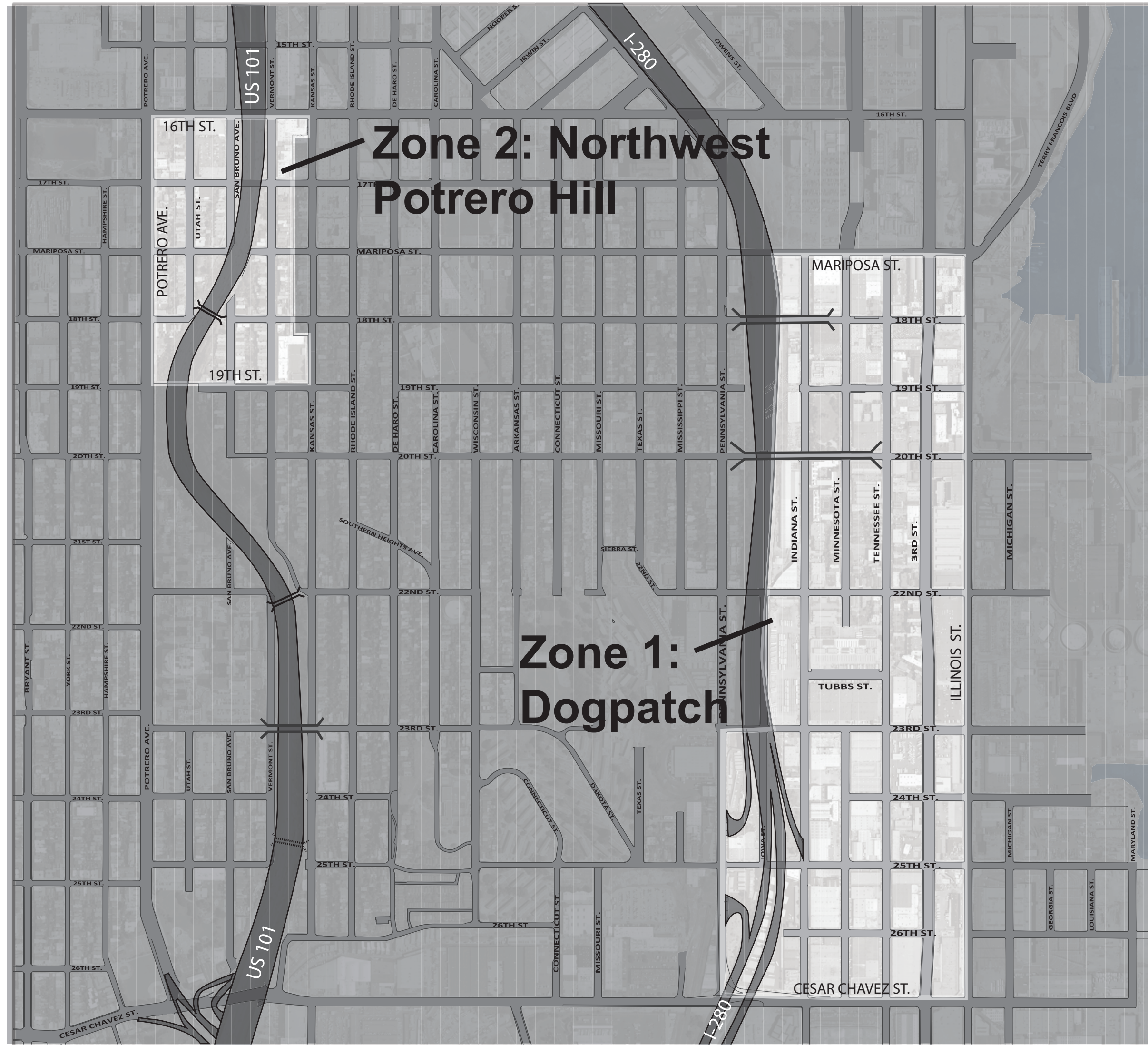


Assessment Diagram

for the assessment district known as the
Dogpatch and Northwest Potrero Hill Green Benefit District

SHEET 1 OF 4



A Property and Business Improvement District
Established in the City and County of San Francisco, State of California,
Under Part 7 of the California Streets and Highways Code
(“Property and Business Improvement District Law of 1994,” §§36600 et seq.)
and Article 15A of the San Francisco Business and Tax Regulations Code

- (1) An assessment was levied by the Board of Supervisors for the City and County of San Francisco, State of California, on the lots, pieces, and parcels of land shown on this Assessment Diagram. The levy of assessment was approved by the Board of Supervisors on _____, 20__ and signed by the Mayor on _____, 20__, Resolution No. _____. The Assessment Diagram was filed in the Office of the Clerk of the Board of Supervisors for the City and County of San Francisco, on _____, 20__.

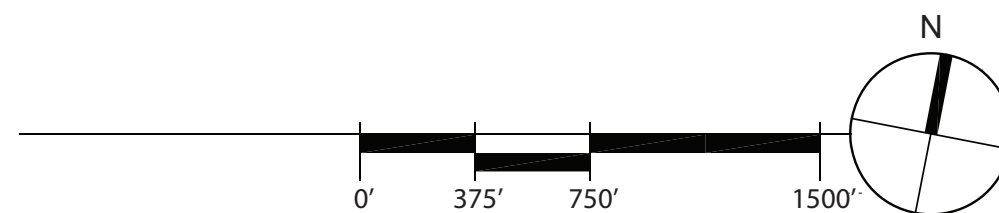
Said Resolution No. _____, together with the statutorily required Management District Plan and certified Engineer's Report for this District as also approved by the Board of Supervisors, are on file with the Board of Supervisors and are submitted with the Assessment Diagram to the Office of the Assessor-Recorder for the City and County of San Francisco for recording. Reference is made to the Management District Plan, certified Engineer's Report and Assessment Diagram, for the amount of each assessment levied against each parcel of land shown on this Assessment Diagram.

Upon recordation by the County Assessor-Recorder, a conformed copy of the Assessment Diagram will be filed with the Clerk of the Board of Supervisors for the City and County of San Francisco, and a Notice of Assessment will be issued pursuant to California Streets and Highways Code §§3114 and 36627.

Angela Calvillo, Clerk of the Board of Supervisors, City and County of San Francisco

- (2) The Assessment Diagram and Resolution No. _____ together with the Management District Plan and Engineer's Report for this assessment district, that were submitted for recording by the Clerk of the Board of Supervisors (see Paragraph No. 1, above), were recorded by the Assessor-Recorder for the City and County of San Francisco, State of California on _____, 20__. The Assessment Diagram was filed in Book _____ of Maps of Assessment and Community Facilities Districts at Page(s) _____, in the Office of the Assessor-Recorder, City and County of San Francisco, State of California, at the hour of ___ o'clock __m., on this same date.

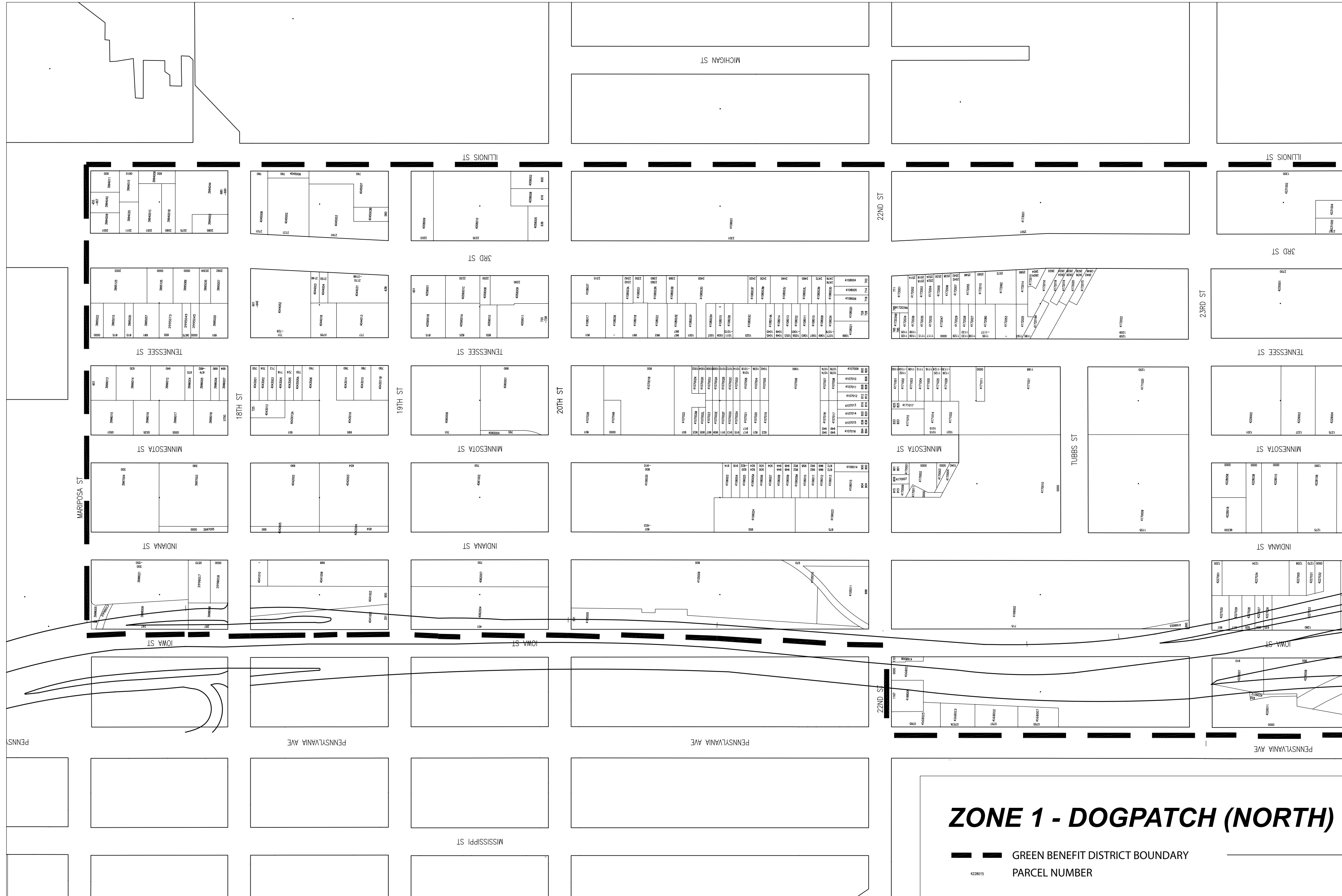
Carmen Chu, Assessor-Recorder, City and County of San Francisco



Assessment Diagram

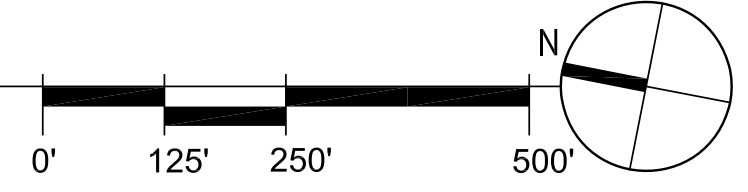
for the assessment district known as the
Dogpatch and Northwest Potrero Hill Green Benefit District

SHEET 2 OF 4



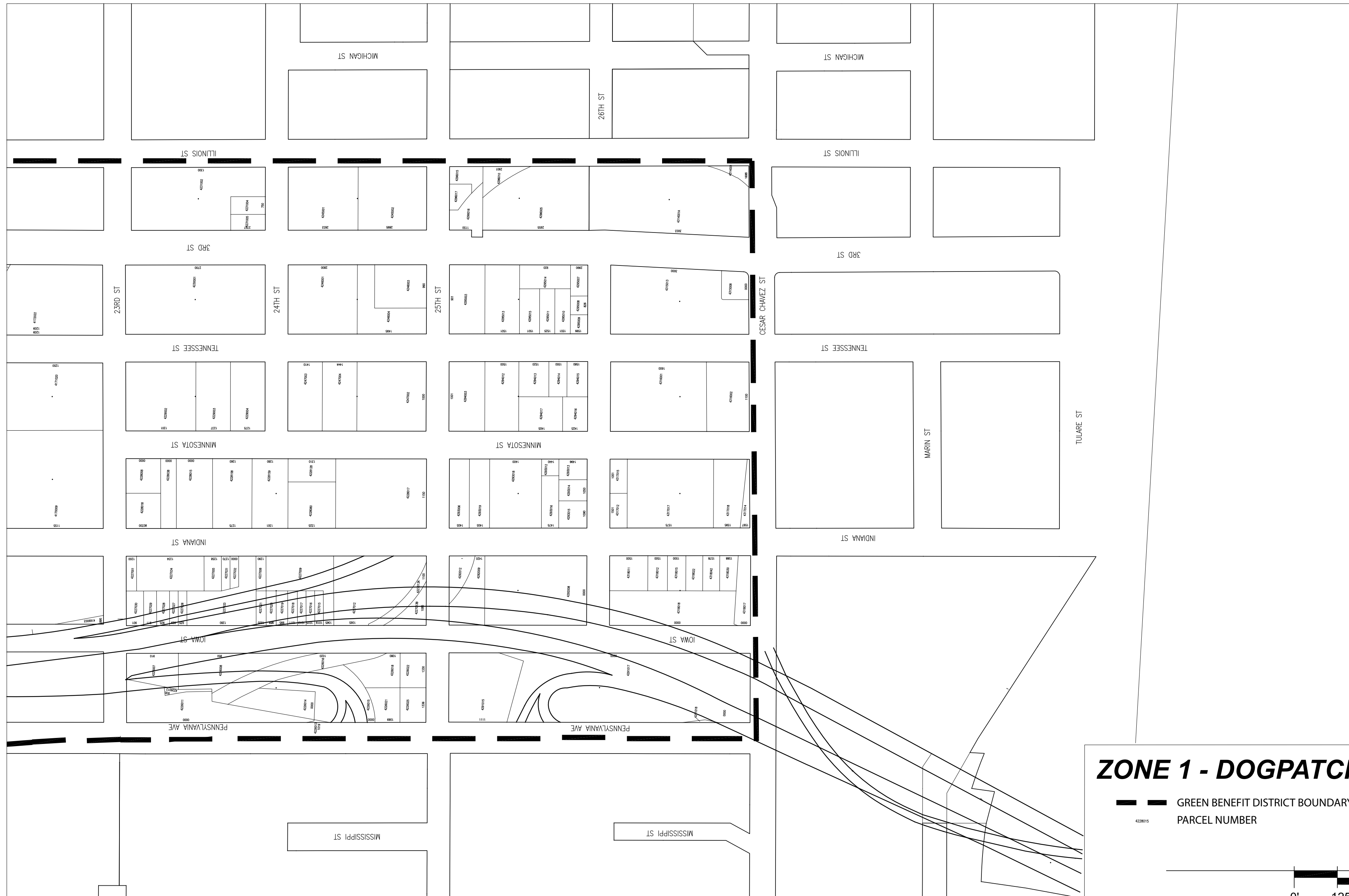
ZONE 1 - DOGPATCH (NORTH)

GREEN BENEFIT DISTRICT BOUNDARY
 PARCEL NUMBER





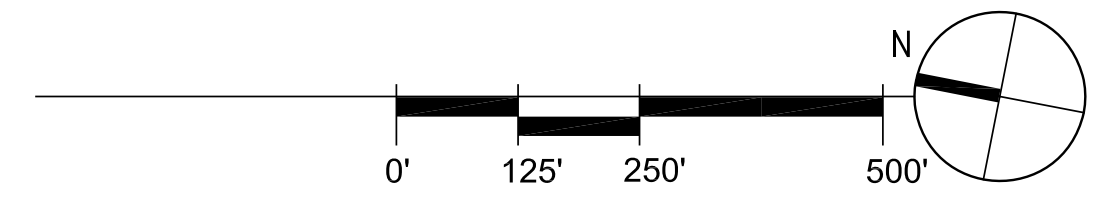
Assessment Diagram
for the assessment district known as the
Dogpatch and Northwest Potrero Hill Green Benefit District

SHEET 3 OF 4



ZONE 1 - DOGPATCH (SOUTH)

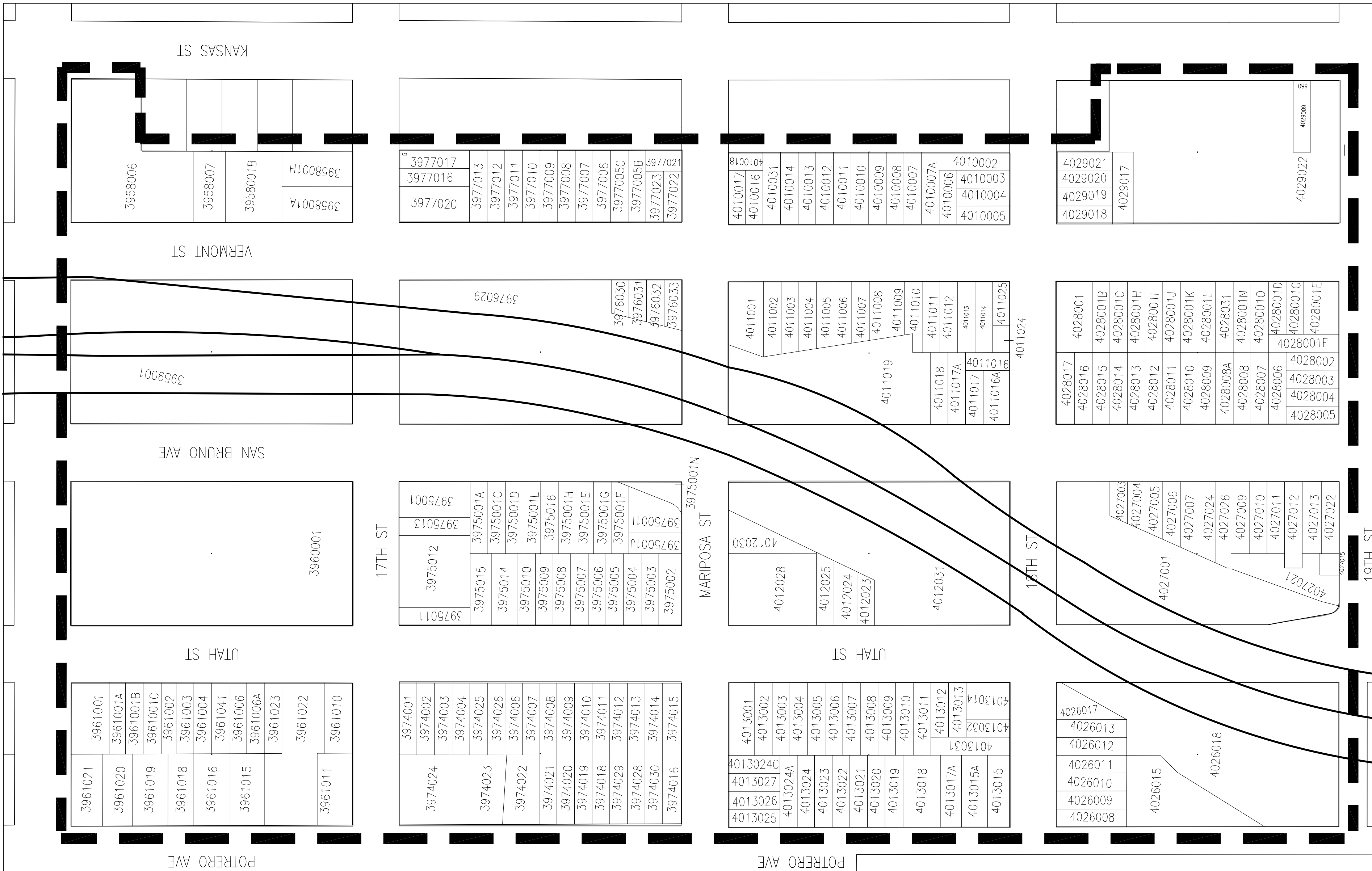
-  GREEN BENEFIT DISTRICT BOUNDARY
-  PARCEL NUMBER



Assessment Diagram

for the assessment district known as the
Dogpatch and Northwest Potrero Hill Green Benefit District

SHEET 4 OF 4



ZONE 2 - NORTHWEST POTRERO HILL

GREEN BENEFIT DISTRICT BOUNDARY
 PARCEL NUMBER

