

**VICINITY MAP**  
NOT TO SCALE

**LEGEND**

- 39  
3718
- LOT NUMBER  
ASSESSORS BLOCK NO.
- NEW CURB LINE  
PROPERTY LINE  
EXISTING OFFICIAL CURB TO REMAIN  
EXISTING OFFICIAL CURB TO BE REMOVED
- AREA UNDER SFPW JURISDICTION  
FOR MAINTENANCE, REFER TO SHEET 3 OF 3

**NOTES:**

1. ALL BLOCK DIMENSIONS USED ARE FROM PARCEL MAP 8677.
2. PARCEL MAP 8677 RECORDED SEPTEMBER 3, 2015, BOOK 49, PAGES 41-42.

LINE TABLE	
LINE #	LENGTH
L1	285.00
L2	335.62
L3	5.00
L4	6.50
L5	125.85
L6	46.96
L7	297.00
L8	161.69

CURVE TABLE			
CURVE #	LENGTH	RADIUS	DELTA
C1	15.71	10.00	90°00'00"
C2	15.71	10.00	90°00'00"
C3	15.71	10.00	90°00'00"
C4	14.63	10.00	83°48'55"
C5	23.56	15.00	90°00'00"
C6	23.56	15.00	90°00'00"
C7	6.97	10.00	39°56'40"
C8	13.94	20.00	39°56'40"



APPROVED:  
*Bruce R. Storrs*  
BRUCE R. STORRS, PLS 6914  
CITY & COUNTY SURVEYOR

*9/29/2019*  
DATE

**CITY AND COUNTY OF SAN FRANCISCO**  
DEPARTMENT OF PUBLIC WORKS

OFFICIAL SIDEWALK CHANGE FRONTING AB 3718 LOTS 026, 027, 038, 039, & 040

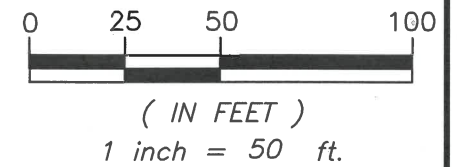
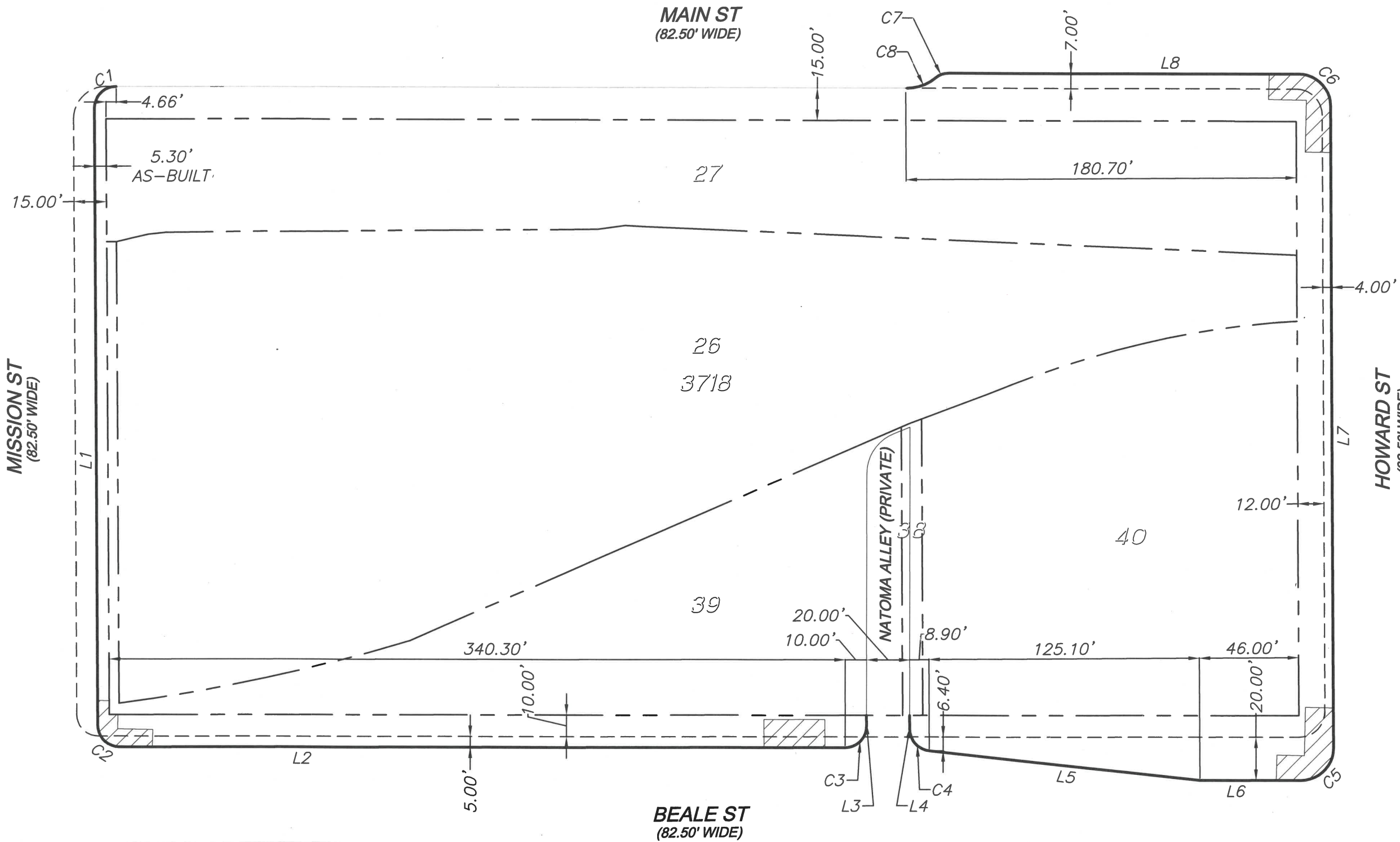
FILE: Q-20-1021

SHEET 1 OF 3

SCALE: 1"=50'

REVISION

Aug 29, 2018 - 8:27am J:\Survey\Sidewalk Changes\AB 3718-250 HOWARD ST.DWG\BS - Revised AB 3718-250 HOWARD ST.dwg



APPROVED:

*[Signature of Bruce R. Storrs]*

BRUCE R. STORRS, PLS 6914  
CITY & COUNTY SURVEYOR

*9/29/2019*

DATE

**CITY AND COUNTY OF SAN FRANCISCO**  
DEPARTMENT OF PUBLIC WORKS

OFFICIAL SIDEWALK CHANGE FRONTING AB 3718 LOTS 026, 027, 038, 039, & 040

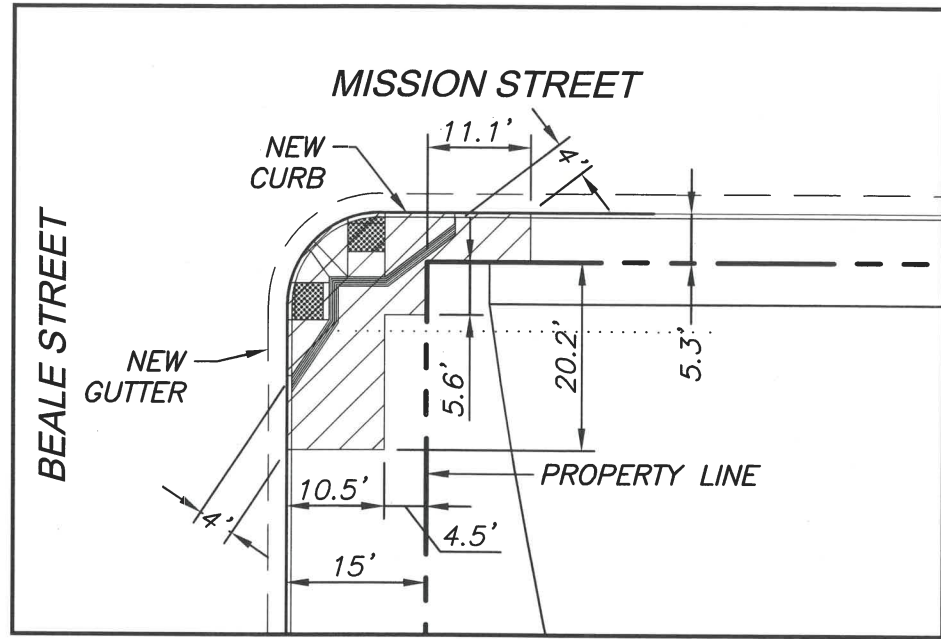
FILE: Q-20-1021

SHEET 2 OF 3

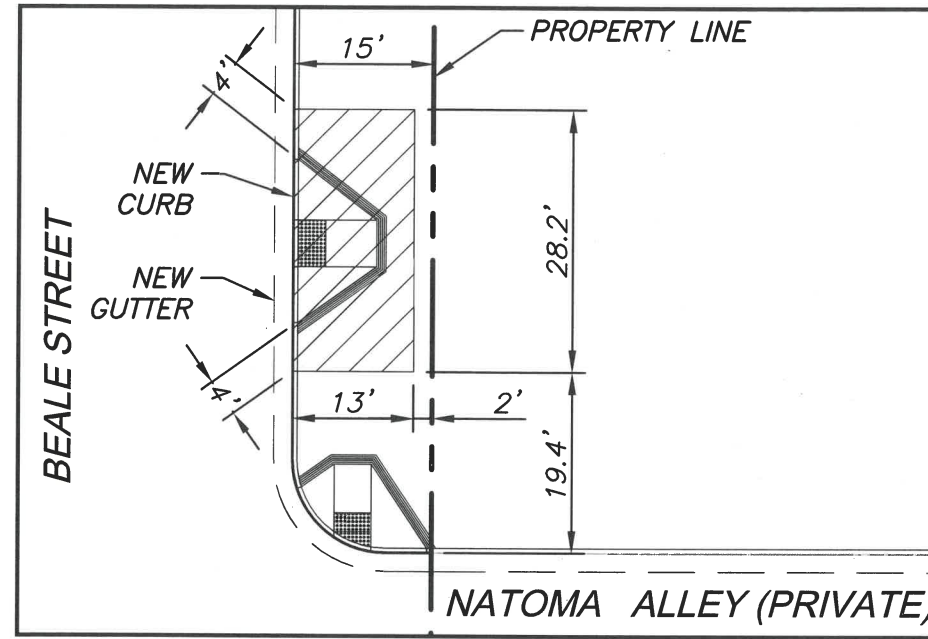
SCALE: 1"=50'

REVISION

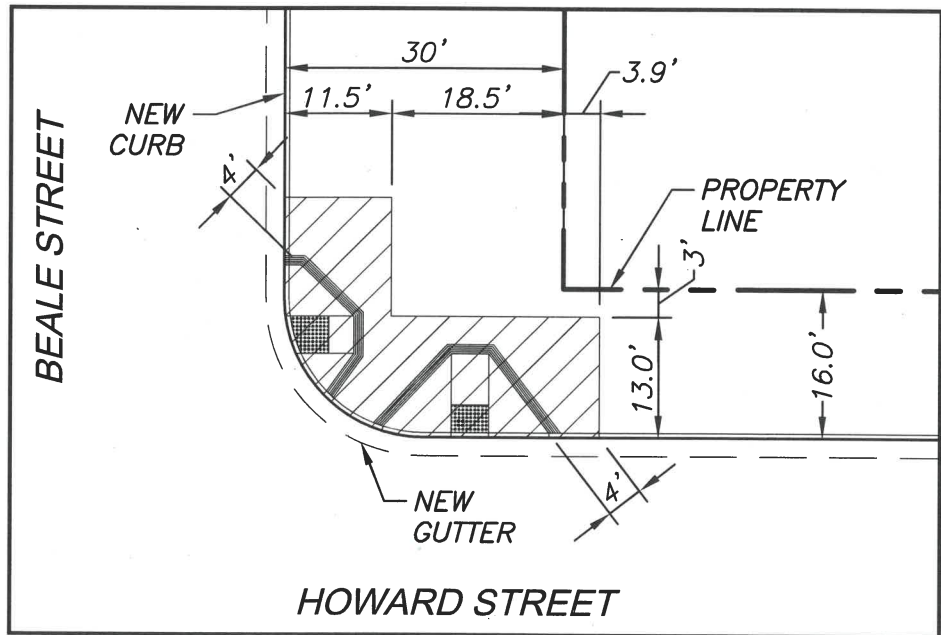
Alde Aug 28, 2018 - 5:12pm S:\3-Projects\0043\_Park Tower at Transbay Block 5\5\_Production\1\_Drawings\2\_Sheets\0-Map\0-20-1021\_Sheet 3\_SAGE\_2018-08-27.dwg



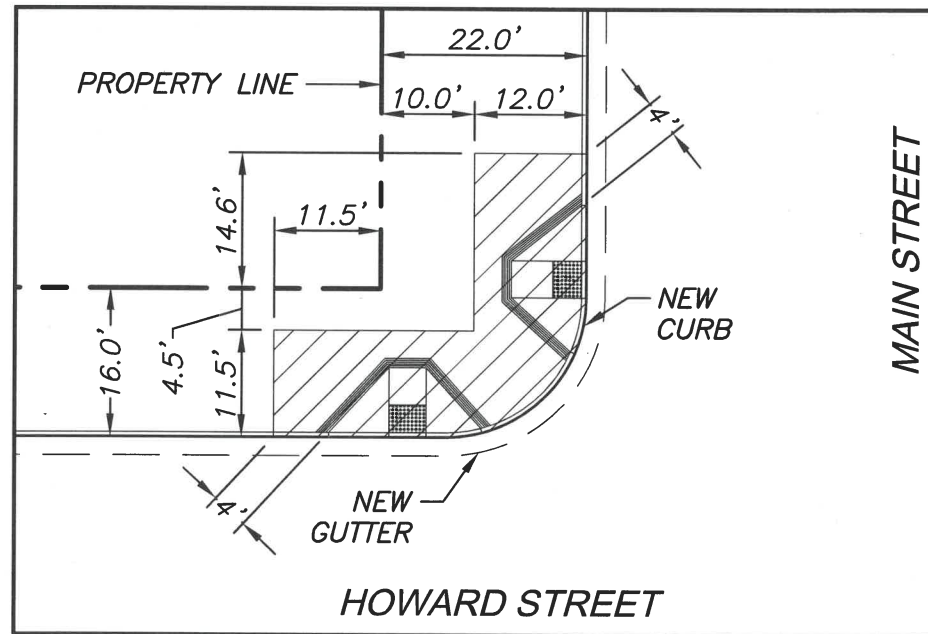
1 CURB RAMP DETAIL - BEALE ST & MISSION ST.



2 CURB RAMP DETAIL - BEALE ST NORTH OF PRIVATE ALLEY



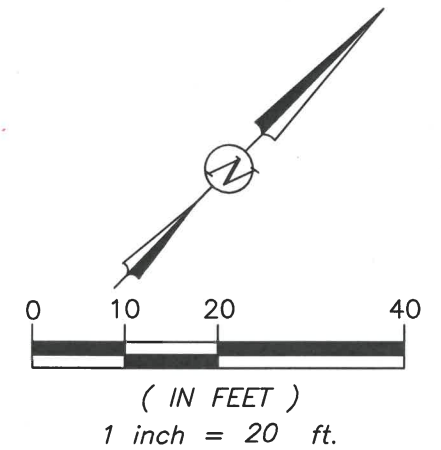
3 CURB RAMP DETAIL - BEALE ST & HOWARD ST.



4 CURB RAMP DETAIL - HOWARD ST & MAIN ST.

**NOTE**

AREA UNDER SFPW JURISDICTION FOR MAINTENANCE



APPROVED:  
  
 BRUCE R. STORRS  
 CITY & COUNTY SURVEYOR

9/29/2019  
 DATE

**CITY AND COUNTY OF SAN FRANCISCO**  
 DEPARTMENT OF PUBLIC WORKS

OFFICIAL SIDEWALK CHANGE HOWARD AND BEALE STREETS AND PORTIONS OF MAIN STREET NORTH OF HOWARD STREET, FRONTING AB 3718 LOTS 26, 27, 38, 39 & 40

FILE: Q-20-1021

SHEET 3 OF 3

SCALE: 1":20'

REVISION